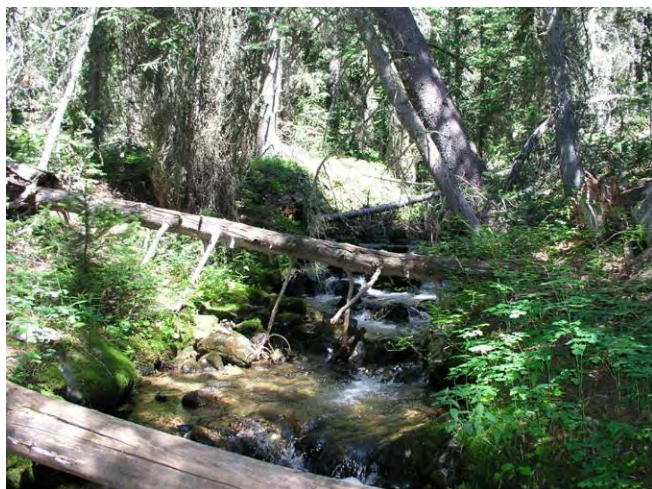
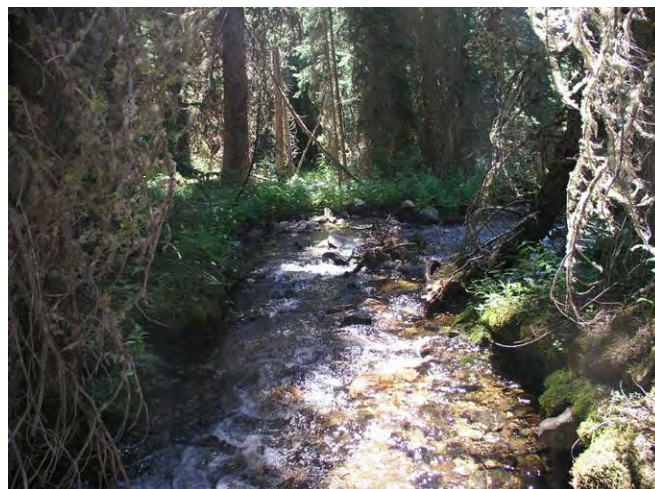


Appendix F

Wisconsin Creek



Wis #1. Wisconsin 8A - Looking upstream.



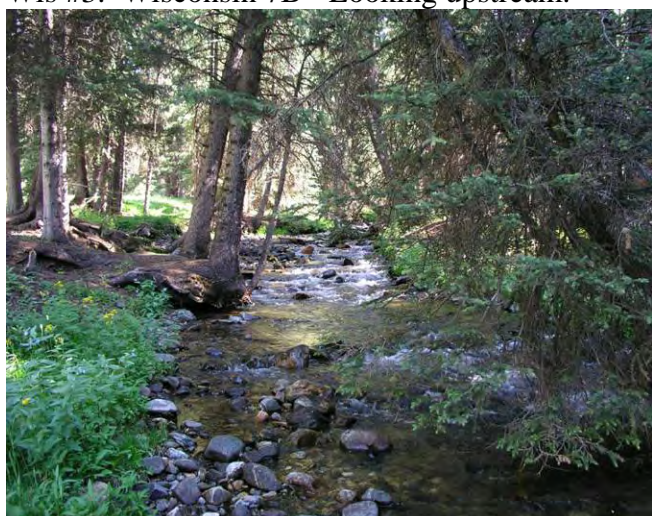
Wis #2. Wisconsin 8A - Looking downstream.



Wis #3. Wisconsin 7B - Looking upstream.



Wis #4. Wisconsin 7B - Looking downstream.



Wis #5. Wisconsin 6C - Looking upstream.



Wis #6. Wisconsin 6C - Looking downstream.



Wis #7. Wisconsin 5D - Looking downstream



Wis #8. Wisconsin 5D - Looking upstream.



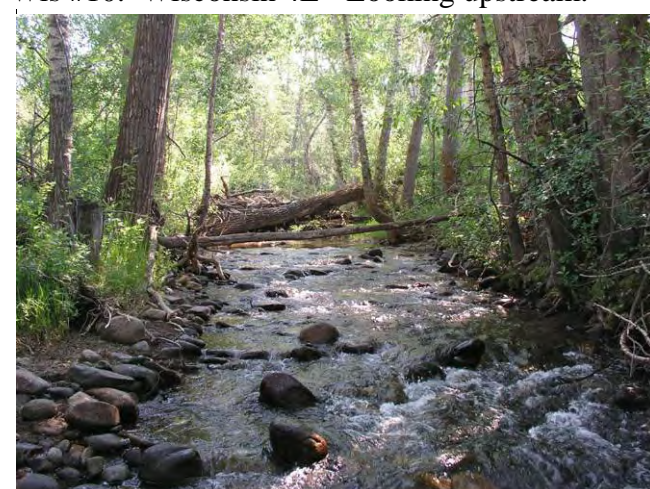
Wis #9. Wisconsin 4E - Looking downstream.



Wis #10. Wisconsin 4E - Looking upstream.



Wis #11. Wisconsin 3F – Looking downstream.



Wis #12. Wisconsin 3F – Looking upstream.



Wis #13. Wisconsin 3G - Looking downstream.



Wis #14. Wisconsin 3G - Diversion.



Wis #15. Wisconsin 3G - Livestock watering.



Wis #16. Wisconsin 2H - Looking downstream.



Wis #17. Wisconsin 2H - Looking upstream.



Wis #18. Wisconsin 2I - Irrigation return.



Wis #19. Wisconsin 2I – Looking downstream



Wis #20. Wisconsin 2I – Looking upstream.



Wis #21. Wisconsin 2J – Livestock watering.



Wis #22. Wisconsin 2J – Looking across channel.



Wis #23. Wisconsin 2J – Bank erosion.



Wis #24. Wisconsin K – Looking upstream.

West Fork Ruby River



WFR #1. West Fork 3 – Looking Downstream.



WFR #2. West Fork 3 – Looking upstream.



WFR #3. West Fork 2 – Looking downstream.



WFR #4. West Fork 2 – Looking upstream.



WFR #5. West Fork 1 – Looking upstream.



WFR #6. Overview.



WFR #7. Muddy water.



WFR #8. Fence – sediment source.



WFR #9. Sediment source.



WFR #10. Grazing.

Warm Springs Creek



Warm Springs #1. WS 7B – Looking upstream.



Warm Springs #2. WS 7B – Another US view.



Warm Springs #3. WS 7B – Looking across stream.



Warm Springs #4. WS 6C – Looking upstream.



Warm Springs #5. WS6C–Looking DS, beaver dam. Warm Springs #6. WS6C–Looking US, beaver dam.



Warm Springs #7. WS 5D – Looking downstream.

Warm Springs #8. WS 5D – Looking upstream.



Warm Springs #9. WS 4E – Looking downstream.

Warm Springs #10. WS 4E – Another DS view.



Warm Springs #11. WS 4E – Looking upstream.



Warm Springs #12. WS 3F – Looking DS.



Warm Springs #13. WS 3F – Looking upstream.



Warm Springs #14. WS 2G – Looking DS.



Warm Springs #15. WS 2G – Looking upstream.



Warm Springs #16. WS 2G – Another US view.



Warm Springs #17. WS 1H – Looking upstream.



Warm Springs #18. WS 1H – Another US view.



Warm Springs #19. WS 1H – Confluence.



Warm Springs #20. WS 5D RU6.

Upper Ruby River



URR #1. Upper Ruby River 11A – Looking DS.



URR #2. Upper Ruby River 11A – Looking US.



URR #3. Upper Ruby River 10B – Looking DS.



URR #4. Upper Ruby River 10B – Looking US.



URR #5. Upper Ruby River 9C – Looking DS.



URR #6. Upper Ruby River 9C – Looking US.



URR #7. Upper Ruby River 8D – Looking US.



URR #8. Upper Ruby River 8D–Another US view.



URR #9. Upper Ruby River 8D – Looking across.



URR #10. Upper Ruby River 7E – Looking US.



URR #11. Upper Ruby River 7E–Another US view.



URR #12. Upper Ruby River 7E –Looking across.



URR #13. Upper Ruby River 6 – Looking US.



URR #14. Upper Ruby River 6–Another US view.



URR #15. Upper Ruby River 6I – Looking DS.



URR #16. Upper Ruby River 6I – Looking US.



URR #17. Upper Ruby River 6H – Looking DS.



URR #18. Upper Ruby River 6H – Looking US.



URR #19. Upper Ruby River 6H – Looking across.



URR #20. Upper Ruby River 5J – Looking DS.



URR #21. Upper Ruby River 5J – Looking US.



URR #22. Upper Ruby River 4G – Looking US.



URR #23. Upper Ruby River 4G–Another US view.



URR #24. Upper Ruby River 1F – Looking DS.



URR #25. Upper Ruby River 1A – Looking DS.



URR #26. Upper Ruby River 1A – Cattle damage.



URR #27. Upper Ruby River Muddy.

Sweetwater Creek



SWC #1. Sweetwater 7H – Looking upstream.



SWC #2. Sweetwater 7H – Beaver dam.



SWC #3. Sweetwater 7H – Cattle trampling.



SWC #4. Sweetwater 6G – Looking upstream.



SWC #5. Sweetwater 6G – Looking downstream.



SWC #6. Sweetwater 6G–Looking across channel.



SWC #7. Sweetwater 5F – Dry channel.



SWC #8. Sweetwater 5F – Some pooled water.



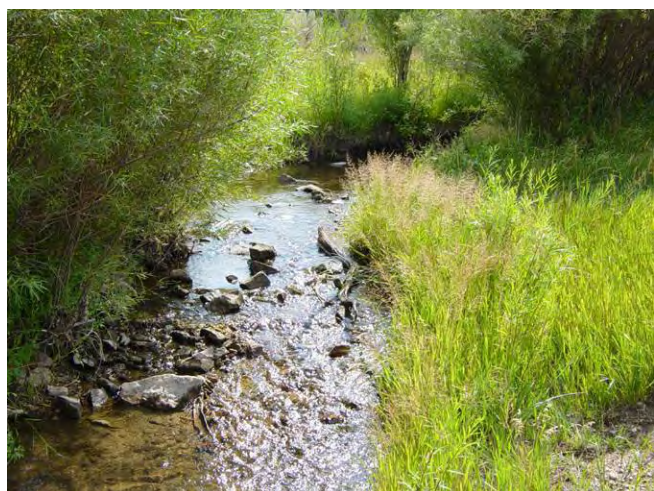
SWC #9. Sweetwater 4E – Beaver pond.



SWC #10. Sweetwater 4E – Another beaver pond.



SWC #11. Sweetwater 3D – Looking downstream.



SWC #12. Sweetwater 3D – Looking upstream.



SWC #13. Sweetwater 2C – Dry channel.



SWC #14. Sweetwater 2C – Pooled water.



SWC #15. Sweetwater 1B – Overgrown channel.



SWC #16. Sweetwater 1B – Overgrown channel.



SWC #17. Sweetwater 1B – Across channel.



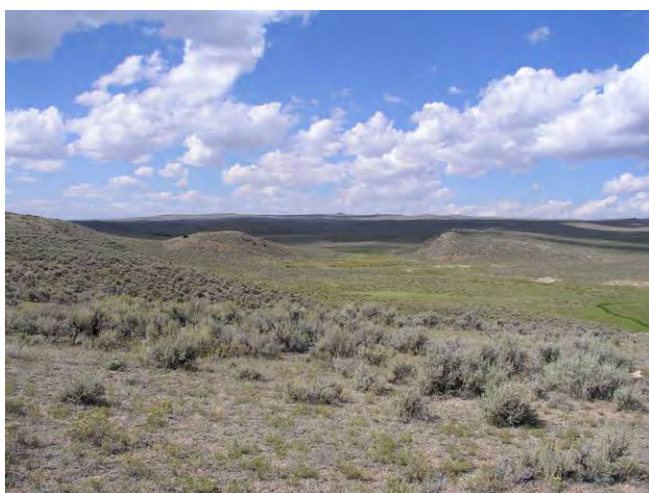
SWC #18. Sweetwater 1A – Dry channel.



SWC #19. Sweetwater 1A – Dry channel.



SWC #20. Sweetwater 1A – Dry channel.



SWC#21. Looking US into Sweetwater Creek.



SWC #22. North Fk. Sweetwater C– Looking DS.



SWC #23. North Fk. Sweetwater C– Looking US.



SWC #24. North Fk Sweetwater B–Looking DS.



SWC #25. North Fk. Sweetwater C– Looking US.



SWC #26. North Fk. Sweetwater B – Headwaters.



SWC #27. North Fk. Sweetwater A–Looking DS.



SWC #28. North Fk. Sweetwater A – Looking US.



SWC #29. North Fork Sweetwater A - Springs.

Shovel Creek



Shovel #1. Shovel 4 – Looking across.



Shovel #2. Shovel 3 – Looking across.



Shovel #3. Shovel 3 – Looking upstream.



Shovel #4. Shovel 2 – Looking across.



Shovel #5. Shovel 1 – Looking downstream.



Shovel #6. Shovel 1 – Looking upstream.



Shovel #7. Looking downstream.

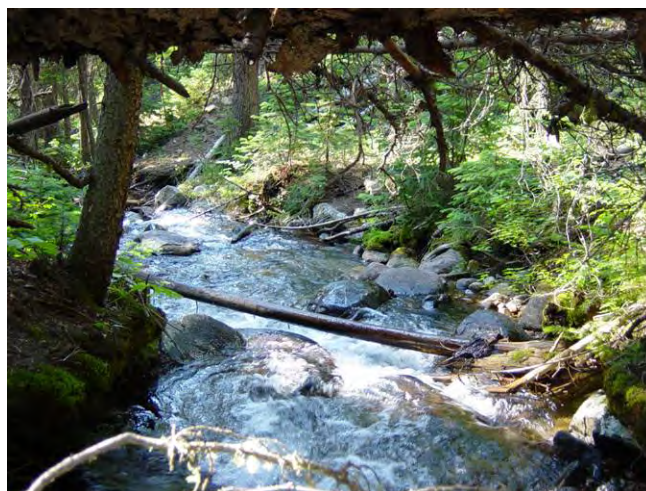


Shovel #8. Looking upstream.

Ramshorn Creek



Ram #1. Ramshorn 6A – Looking upstream.



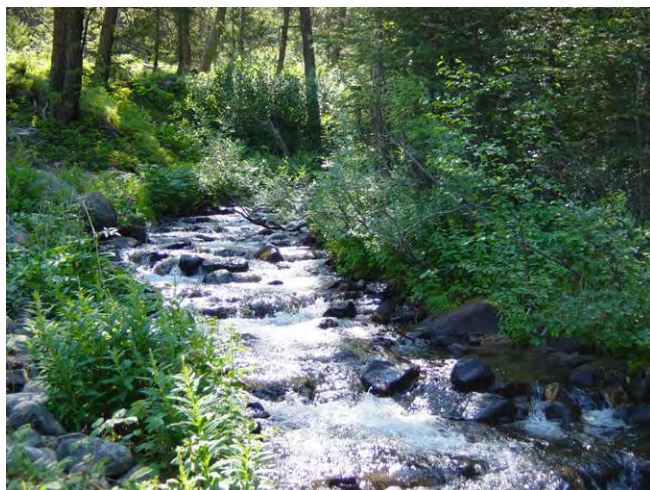
Ram #2. Ramshorn 6B – Looking downstream.



Ram #3. Ramshorn 6B – Looking upstream.



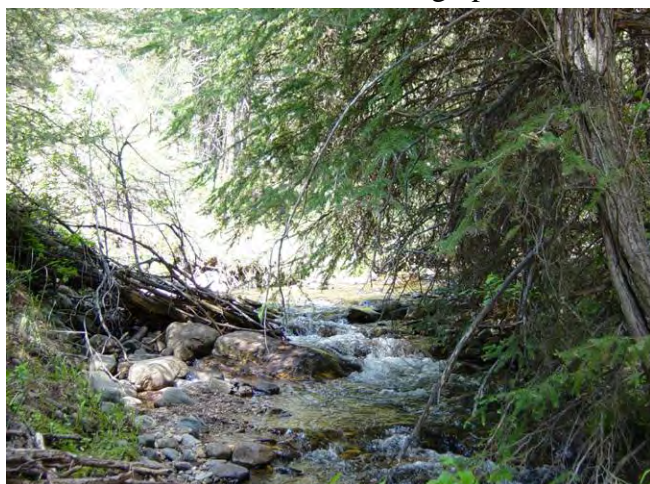
Ram #4. Ramshorn 6B – Looking across.



Ram #5. Ramshorn 5C – Looking upstream.



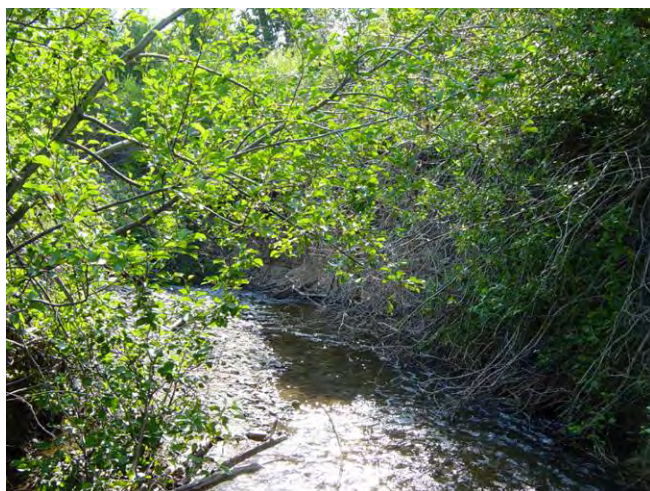
Ram #6. Ramshorn 5C – Another upstream view.



Ram #7. Ramshorn 5D – Looking upstream.



Ram #8. Ramshorn 5D – Another upstream view.



Ram #9. Ramshorn 4E – Looking downstream.



Ram #10. Ramshorn 4E – Looking across.



Ram #11. Ramshorn 2F – Looking downstream.



Ram #12. Ramshorn 2F – Looking upstream.



Ram #13. Ramshorn 2F – Another upstream view.



RAM#14. Off-cast material from grading piled directly above stream channel

Poison Creek



Poison #1. Poison A – Looking downstream.



Poison #2. Poison A – Looking upstream.



Poison #3. Poison B – Looking downstream.



Poison #4. Poison B – Looking upstream.



Poison #5. Poison C – Looking downstream.



Poison #6. Poison C – Looking upstream.



Poison #7. Poison C – Cattle damage.

North Fork Greenhorn Creek



NFG #1. North Fork Greenhorn 1A – Looking upstream.



NFG #2. North Fork Greenhorn 1A.

Mormon Creek



Mor #1. Mormon 4A – Looking downstream.



Mor #2. Mormon 4A – Looking upstream.



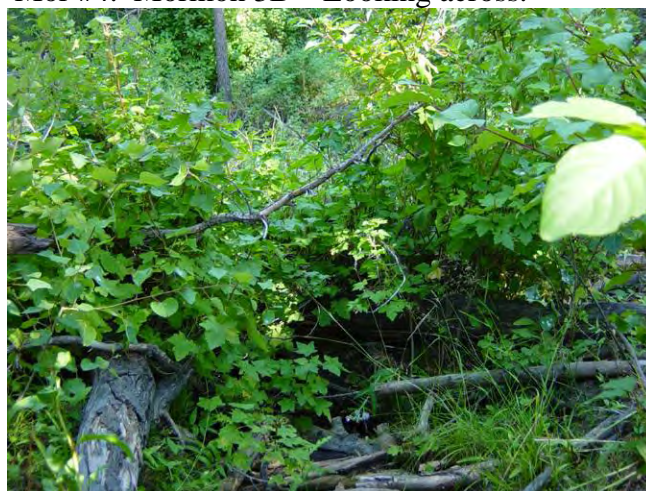
Mor #3. Mormon 3B – Looking upstream.



Mor #4. Mormon 3B – Looking across.



Mor #5. Mormon 2C – Looking downstream.



Mor #6. Mormon 2C – Looking upstream.



Mor #7. Mormon 1D.

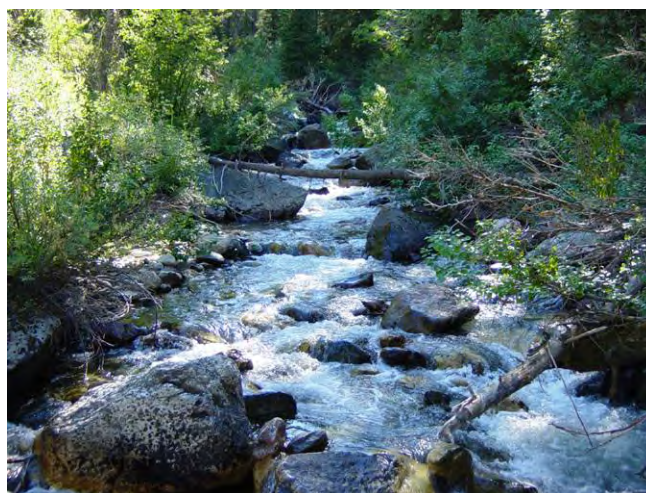


Mor #8. Mormon 1D.

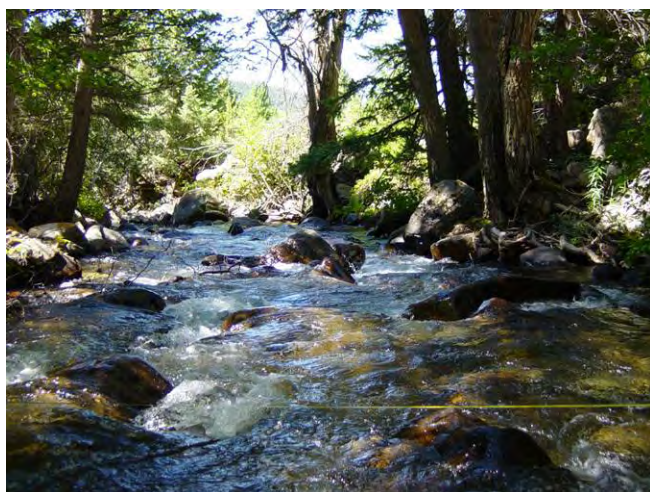
Mill Creek



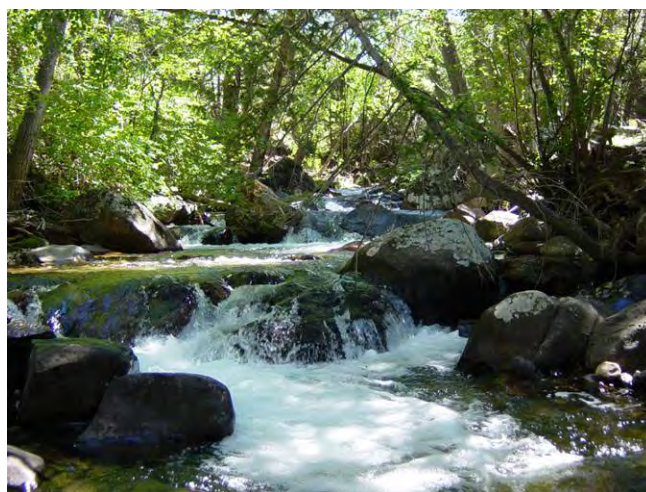
Mill #1. Mill 5C – Looking downstream.



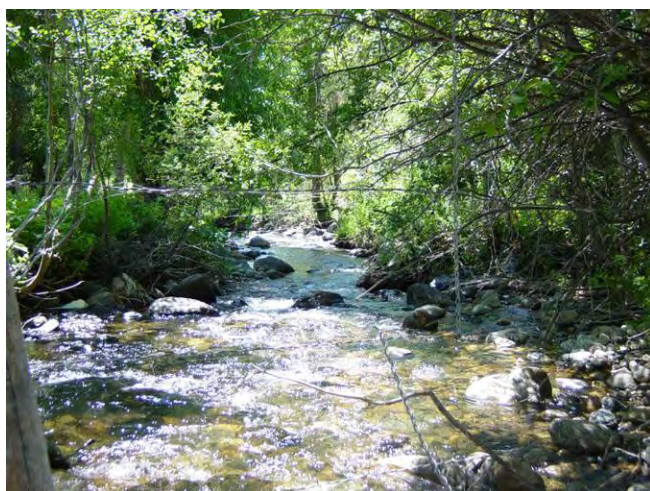
Mill #2. Mill 5C – Looking upstream.



Mill #3. Mill 5D – Looking downstream.



Mill #4. Mill 5D – Looking upstream.



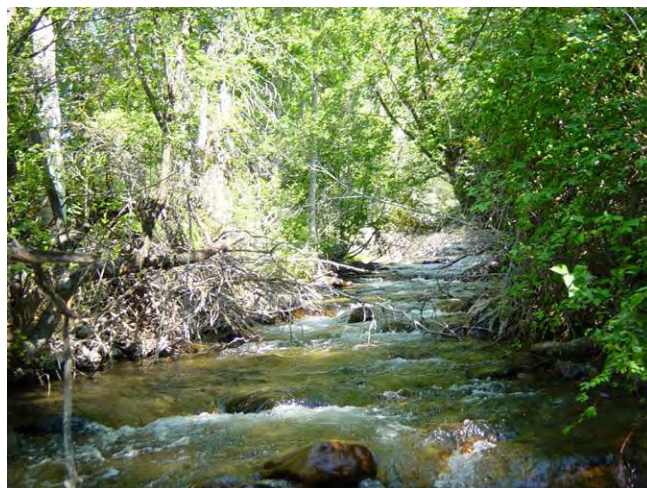
Mill #5. Mill 5E – Looking downstream.



Mill #6. Mill 5E – Looking upstream.



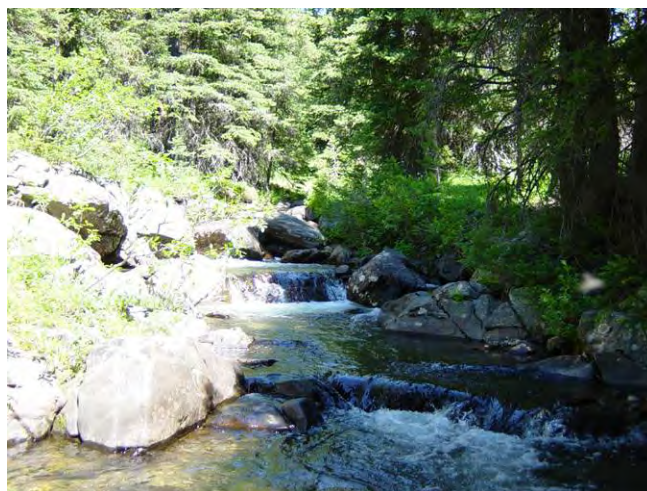
Mill #7. Mill 4A – Looking downstream.



Mill #8. Mill 4A – Looking upstream.



Mill #9. Mill 4B – Looking downstream.



Mill #10. Mill 4B – Looking upstream.



Mill #11. Mill 3F – Looking downstream.



Mill #12. Mill 3F – Another downstream view.



Mill #13. Mill 3F – Looking upstream.



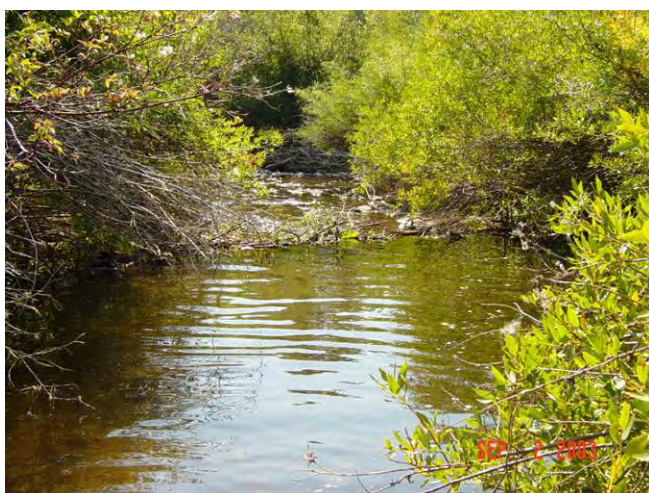
Mill #14. Mill 3G – Looking downstream.



Mill #15. Mill 3G – Looking upstream.



Mill #16. Mill 2H – Looking upstream.



Mill #17. Mill 2H2 – Looking upstream.



Mill #18. Mill 2I – Looking upstream.



Mill #19. Mill A – Looking downstream.



Mill #20. Mill A – Looking upstream.



Mill #21. Upstream of town of Sheridan.



Mill #22. Town of Sheridan.



Mill #23. Downstream of Town of Sheridan.



Mill #24. More muddy water DS of Sheridan.

Middle Fork Ruby



MFR #1. Middle Fork Ruby 2B – Looking upstream. MFR #2. Middle Fork Ruby 2B – Beaver dam.



MFR #3. Middle Fork Ruby 2B – Beaver dam.



MFR #4. Middle Fork Ruby 1C – Looking DS.



MFR #5. Middle Fork Ruby 1C – Looking US.



MFR #6. Middle Fork Ruby 1C – Looking US.

Lower Ruby River



LRR #1. Lower Ruby River 14A – Spillway.



LRR #2. Lower Ruby River 14A – Looking US.



LRR #3. Lower Ruby River 14A – Looking US.



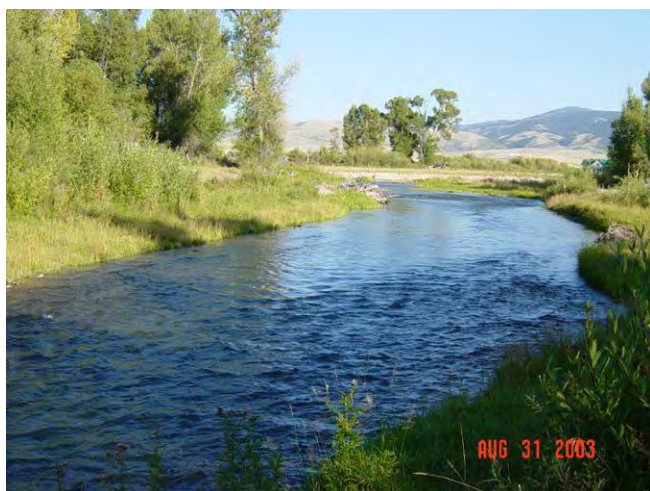
LRR#4. Lower Ruby Riv 13B – Looking across.



LRR #5. Lower Ruby River 13B – Looking US.



LRR #6. Lower Ruby River 13B – Looking US.



LRR #7. Lower Ruby River 12E – Looking DS.



LRR #8. Lower Ruby River 12E – Looking US.



LRR #9. Lower Ruby River 11C2 – Looking DS.



LRR #10. Lower Ruby Riv 11C2 – Looking US.



LRR #11. Lower Ruby River 11C – Looking DS.



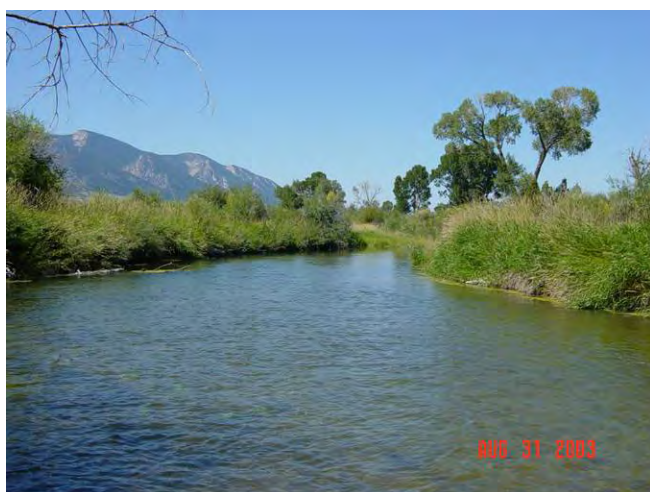
LRR #12. Lower Ruby River 11C – Looking US.



LRR #13. Lower Ruby River 11C – Looking US.



LRR #14. Lower Ruby River 11D – Looking DS.



LRR #15. Lower Ruby River 11D – Looking US.



LRR #16. Lower Ruby River 11F – Looking DS.



LRR #17. Lower Ruby River 11F – Looking US.



LRR #18. Lower Ruby River 10G – Looking DS.



LRR #19. Lower Ruby River 10G – Looking US.



LRR #20. Lower Ruby River 6K – Looking DS.



LRR #21. Lower Ruby River 6K – Looking US.



LRR #22. Lower Ruby River 5J – Looking US.



LRR #23. Lower Ruby River 5I – Looking DS.



LRR #24. Lower Ruby River 5I – Looking US.



LRR #25. Lower Ruby River 4H – Looking DS.



LRR #26. Lower Ruby River 4H – Looking US.



LRR #27. Lower Ruby River 1L – Looking DS.



LRR #28. Lower Ruby River 1L – Looking US.



LRR #29. Diversion.



LRR #30. Clearing.

Clear Creek



Clear #1. Clear Creek C – Looking upstream.



Clear #2. Clear Creek B – Looking upstream.

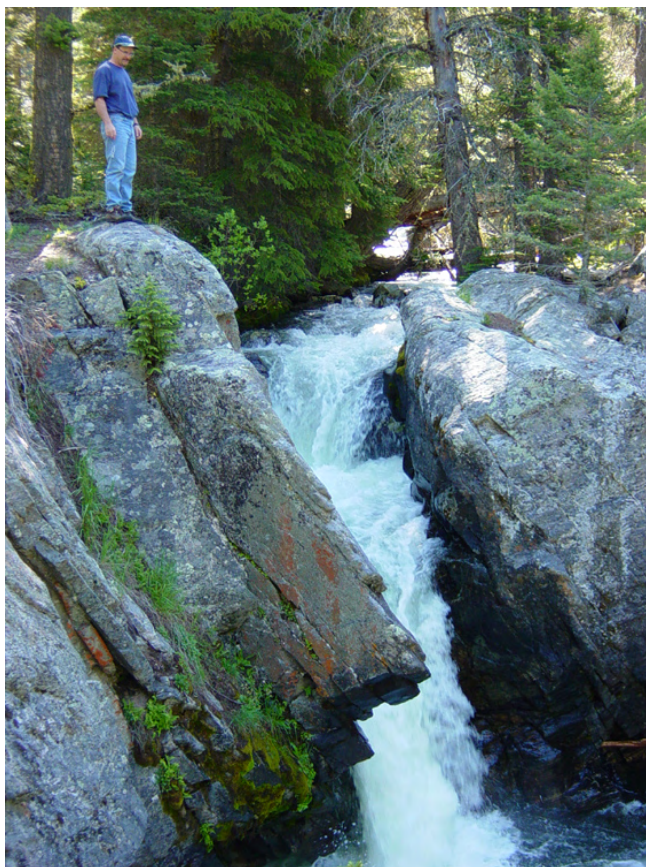


Clear #3. Clear Creek A – Looking upstream.

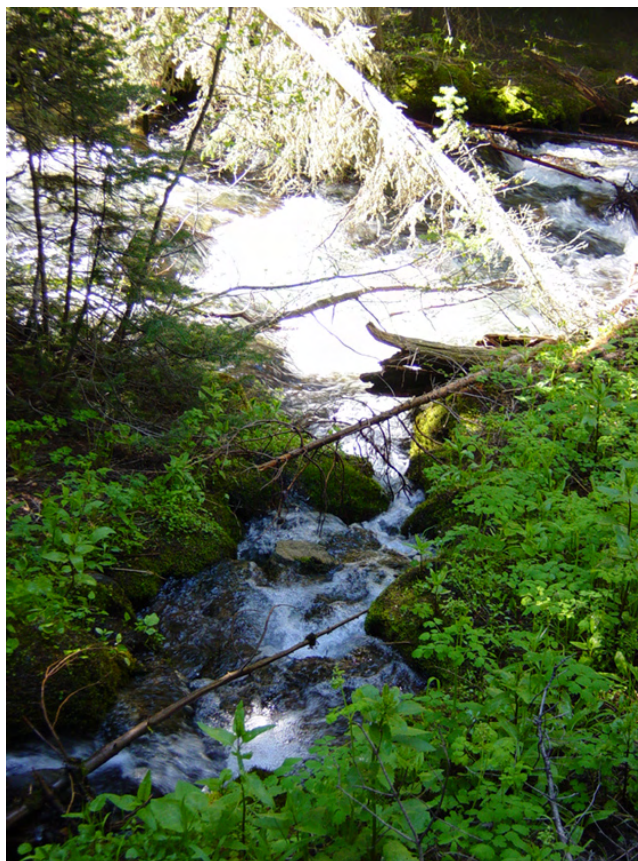


Clear #4. Clear Creek A – Looking across.

Indian Creek



Indian #1. Indian Creek – Fish barrier.



Indian #2. Indian Creek – Looking upstream.



Indian #3. Indian 5C – Looking downstream.



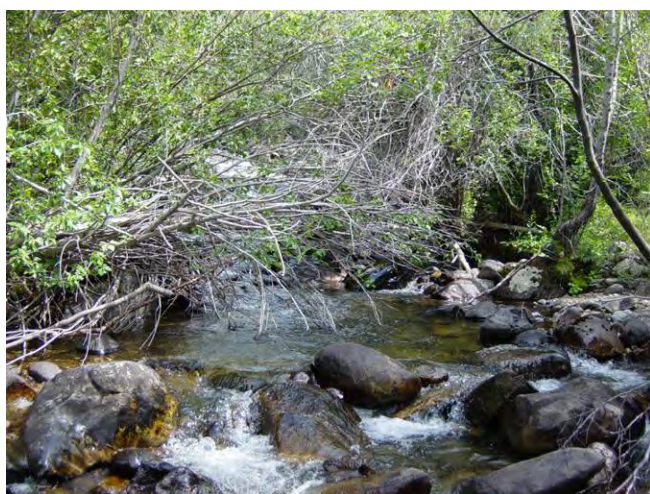
Indian #4. Indian 5C – Looking downstream.



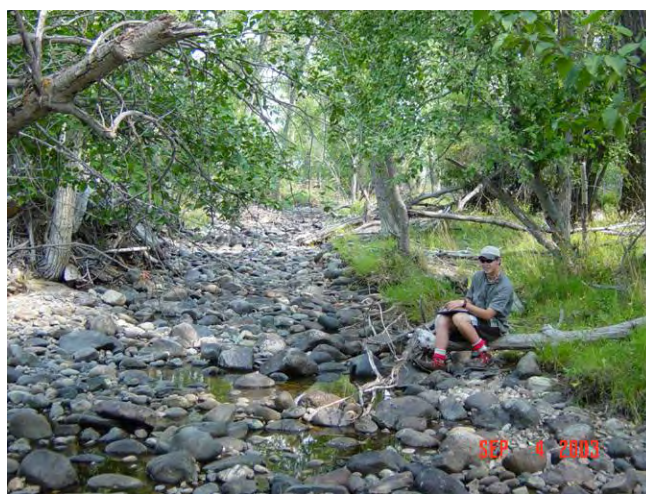
Indian #5. Indian 5C – Looking across.



Indian #6. Indian 5C2 – Looking downstream.



Indian #7. Indian 5C2 – Looking upstream.



Indian #8. Indian 4D – Looking upstream.



Indian #9. Indian 4E – Looking downstream.



Indian #10. Indian 4E – Looking upstream.



Indian #11. Indian 3F – Looking downstream.



Indian #12. Indian 3G.



Indian #13. Indian 2H.



Indian #14. Indian 2H.



Indian #15.



Indian #16. Beaver ponds.



Indian 17# . More beaver ponds.

Hawkeye Creek



Haw #1. Hawkeye 2 – Looking downstream.



Haw #2. Hawkeye 2 – Looking upstream.



Haw #3. Hawkeye 1 – Looking downstream.



Haw #4. Hawkeye 1 – Looking upstream.



Haw #5. Old beaver dam.

Garden Creek



Garden #1. Garden 4D – Looking downstream.



Garden #2. Garden 4D – Looking upstream.



Garden #3. Garden 3C – Looking DS.



Garden #4. Garden 3C – Another DS view.



Garden #5. Garden 3C – Looking upstream.



Garden #6. Garden 1A – Looking downstream.



Garden #7. Garden 1A – Looking upstream.

East Fork Ruby River



EFR #1. East Fork Ruby 4.



EFR #2. East Fork Ruby 4 - Landslide.



EFR #3. East Fork Ruby 4A – Looking downstream.



EFR #4. East Fork Ruby 4A – Looking upstream.



EFR #5. East Fork Ruby 4A – Black Butte.



EFR #6. East Fork Ruby 3B – Looking DS.



EFR #7. East Fork Ruby 3B – Looking upstream.



EFR #8. East Fork Ruby 2C – Looking DS.



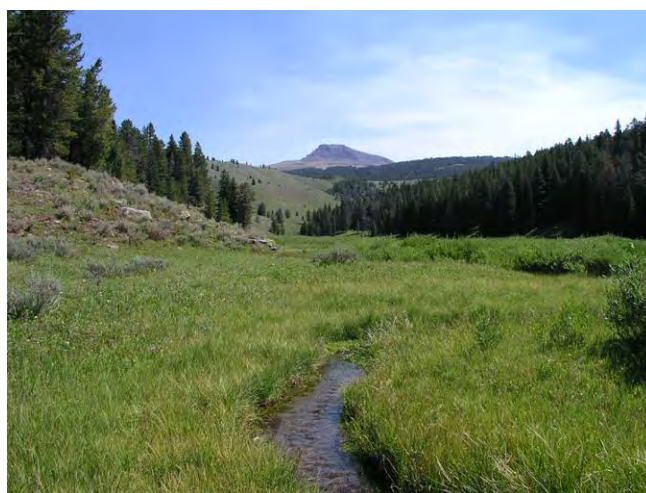
EFR #9. East Fork Ruby 2C – Looking upstream.



EFR #10. East Fork Ruby 1D – Looking DS.



EFR #11. East Fork Ruby 1D – Looking upstream.



EFR #12. Another view of Black Butte.



EFR #13.



EFR #14. Overview – Snowcrest.

Cottonwood Creek



Cot #1. Cottonwood 3A – Overview.



Cot #2. Cottonwood 3A – Looking upstream.



Cot #3. Cottonwood 3A2 – Looking upstream.



Cot #4. Cottonwood 3A2 – Cattle damage.



Cot #5. Cottonwood 2B



Cot #6. Cottonwood 2B



Cot #7. Cottonwood 1C



Cot #8. Cottonwood 1C

Coal Creek



Coal #1. Coal 3A – Upstream end looking DS.



Coal #2. Coal 3A – Landslide.



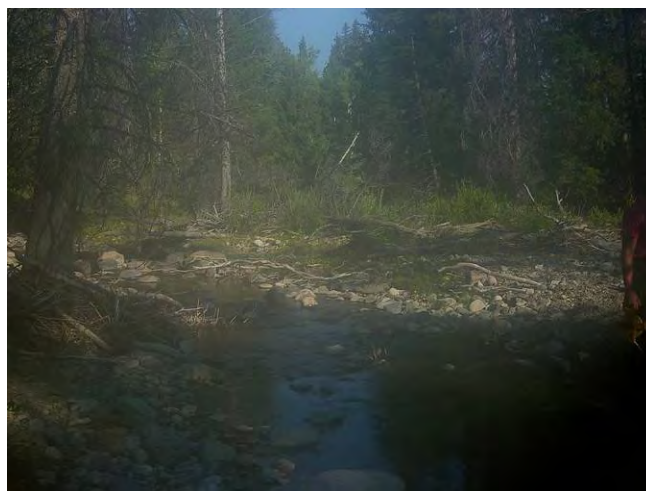
Coal #3. Coal 3A - Looking upstream.



Coal #4. Coal 3A - Another upstream view.



Coal #5. Coal 3A – Looking upstream.



Coal #6. Coal 2B – Looking upstream.



Coal #7. Coal 2B.

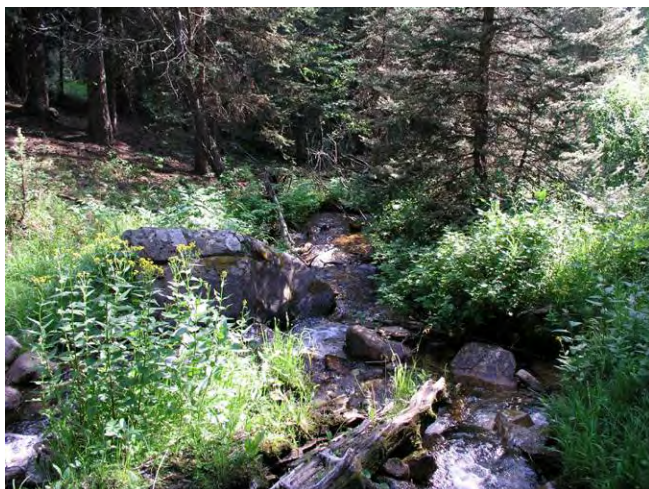


Coal #8. Coal 1A – Looking downstream.

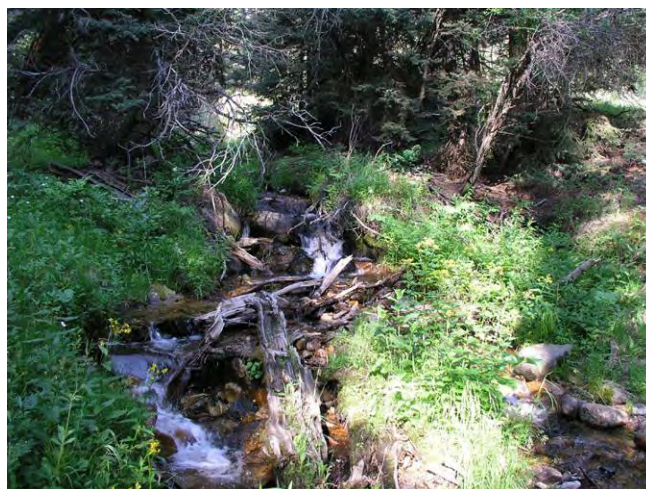


Coal #9. Coal 1A – Looking upstream.

California Creek



Cal #1. California 5 – Looking downstream.



Cal #2. California 5 – Looking upstream.



Cal#3. California 4 – Looking downstream.



Cal #4. California 4 – Looking upstream.



Cal #5. California 3C – Looking downstream.



Cal #6. California 3C – Looking upstream.



Cal #7. California 2 – Looking downstream.



Cal #8. California 2 – Looking upstream.



Cal #9. California E – Looking downstream.



Cal #10. California E – Looking upstream.



Cal #11. California E – Sheep corral.



Cal #12. California 2D – Looking upstream.



Cal #13. California 2B – Looking downstream.



Cal #14. California 2B – Looking upstream.



Cal #15. California 2A – Looking downstream.



Cal #16. California 2A – Looking – upstream.



Cal #17. California – Beaver dam.

Burnt Creek



Burnt #1. Burnt D – Looking downstream.



Burnt #2. Burnt D – Looking upstream.



Burnt #3. Burnt C – Looking downstream.



Burnt #4. Burnt C – Looking upstream.



Burnt #5. Burnt B – Looking downstream.



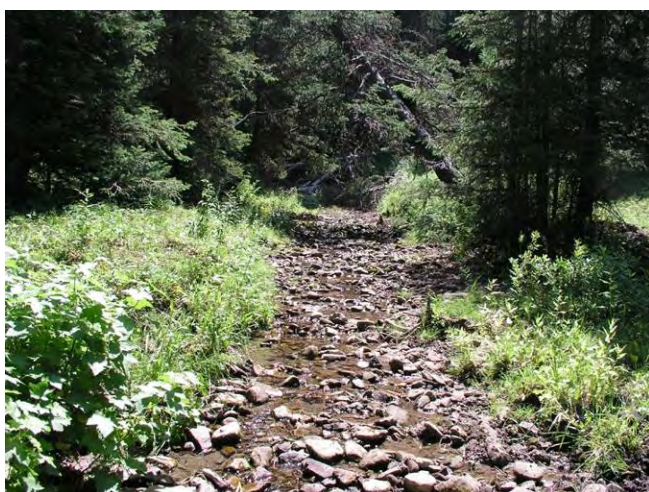
Burnt #6. Burnt B – Looking upstream.



Burnt #7. Burnt B – Headcut.



Burnt #8. Burnt A – Looking downstream.



Burnt #9. Burnt A – Looking upstream.



Burnt #10. Meadow above Burnt Creek Falls.



Burnt #11. Burnt Creek Falls.



Burnt #12. Burnt Creek Falls.

Basin Creek



Basin #1. Basin 3A – Looking downstream.



Basin #2. Basin 3A – Looking upstream.



Basin #3. Basin 3A – Looking upstream (2).



Basin #4. Basin 3A – Looking across.



Basin #5. Basin 2B – Looking upstream.



Basin #6. Basin 2B – Beaver pond.



Basin #7. Basin 1C – Looking downstream.



Basin #8. Basin 1C – Looking upstream.



Basin #9. Basin 1C – Beaver dam.



Basin#10. Basin 1C – Looking across channel.

Browns Gulch



Browns #1. Browns Gulch – Looking downstream.



Browns #2. Browns Gulch – Downstream view.



Browns #3. Browns Gulch – Looking upstream.



Browns #4. Browns Gulch – Upstream view.



Browns #5. Browns Gulch – Mine remains.

Granite Creek



Granite #1. Granite Creek – Looking downstream.



Granite #2. Granite Creek – Downstream view.



Granite #3. Granite Creek – Downstream view.



Granite #4. Granite Creek – Looking across channel.



Granite #5. Granite Creek – Beaver dam.

Alder Creek



Alder #1. Alder 5F – Looking downstream.



Alder #2. Alder 5F – Looking upstream.



Alder #3. Alder 5F – Road crossing.



Alder #4. Alder 4E – Looking downstream.



Alder #5. Alder 4E – Looking upstream.



Alder #6. Alder 4E – Ford.



Alder #7. Alder 3D – Looking downstream.



Alder #8. Alder 3D – Looking upstream.



Alder #9. Alder 3D



Alder #10. Alder 2C – Looking downstream.



Alder #11. Alder 2C – Looking upstream.



Alder #12. Alder 2C – General sediment source.