

FY2024 Nonpoint Source Reduction Projects

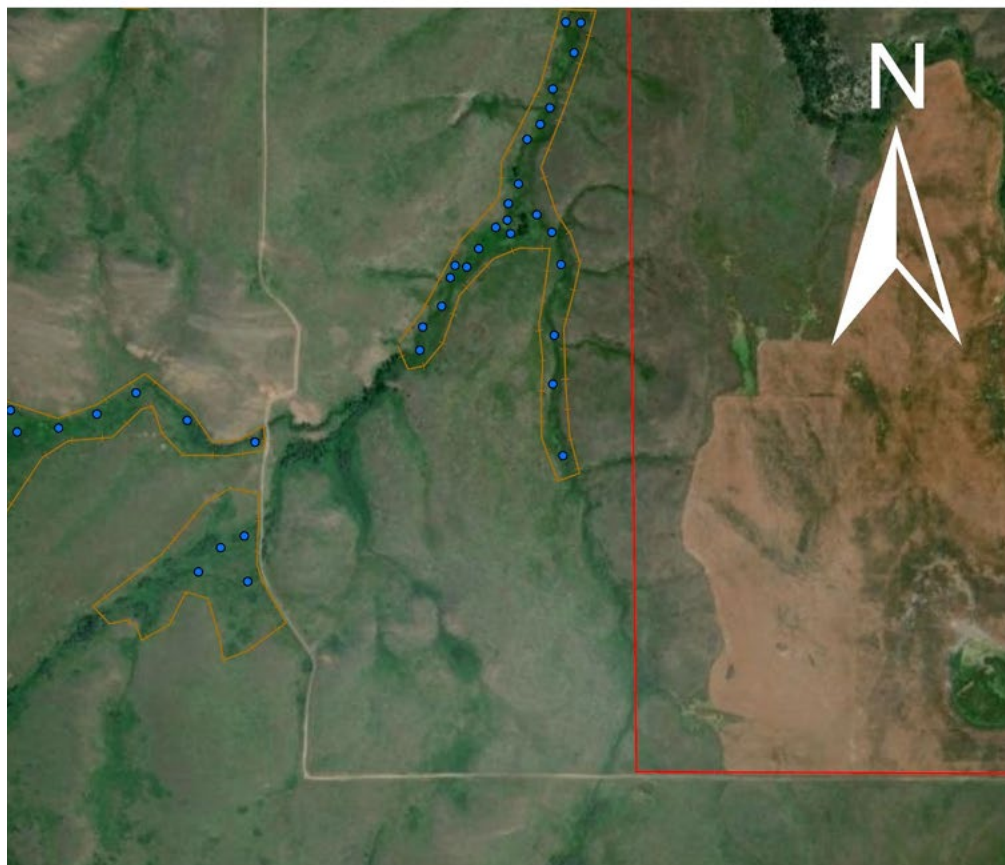
May WPCAC Meeting



Beaver Dam Analog



Figure 9: A photo of Camp Creek with depictions of a Beaver Dam Analog.

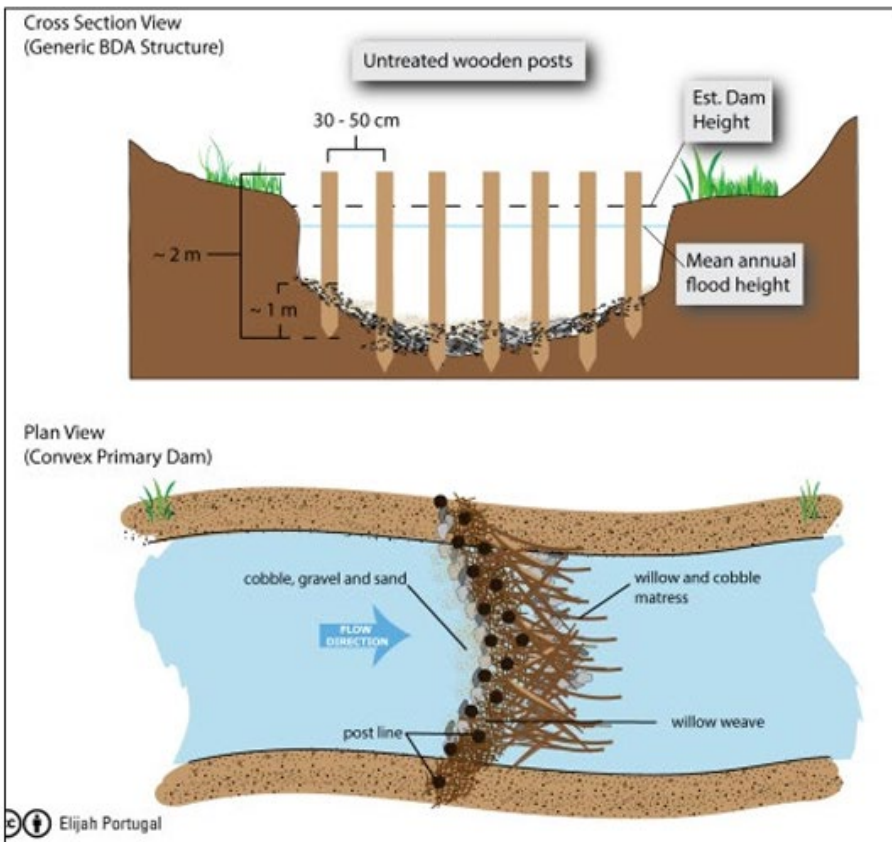
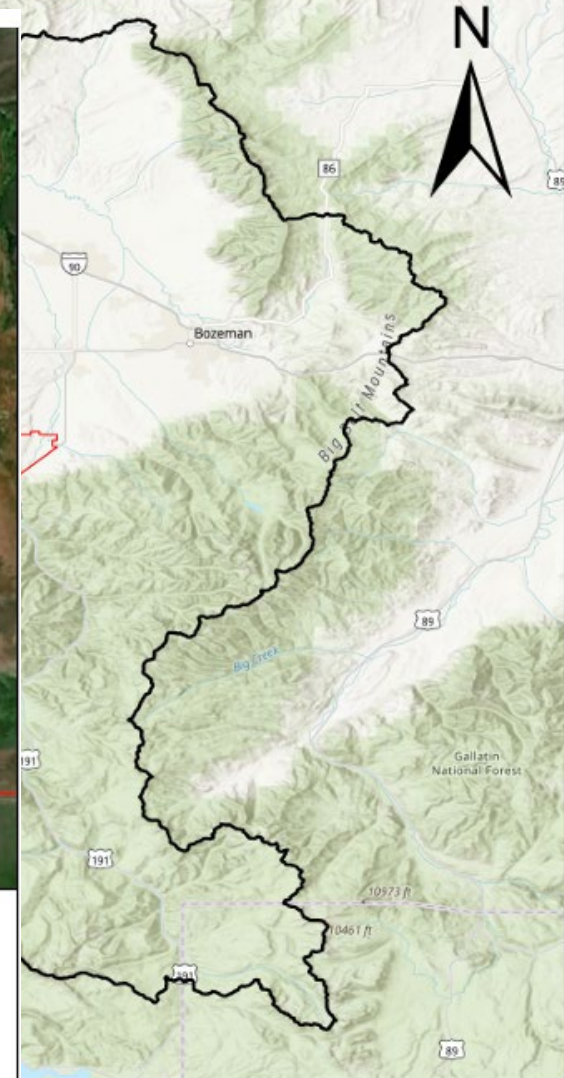


Fork Camp Creek Restoration



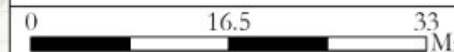
Legend

- BDA
- Fencing
- ▭ TEI Inc. Property



Elijah Portugal

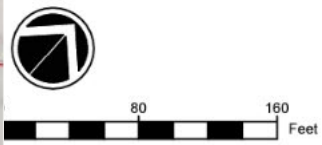
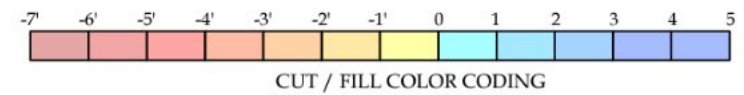
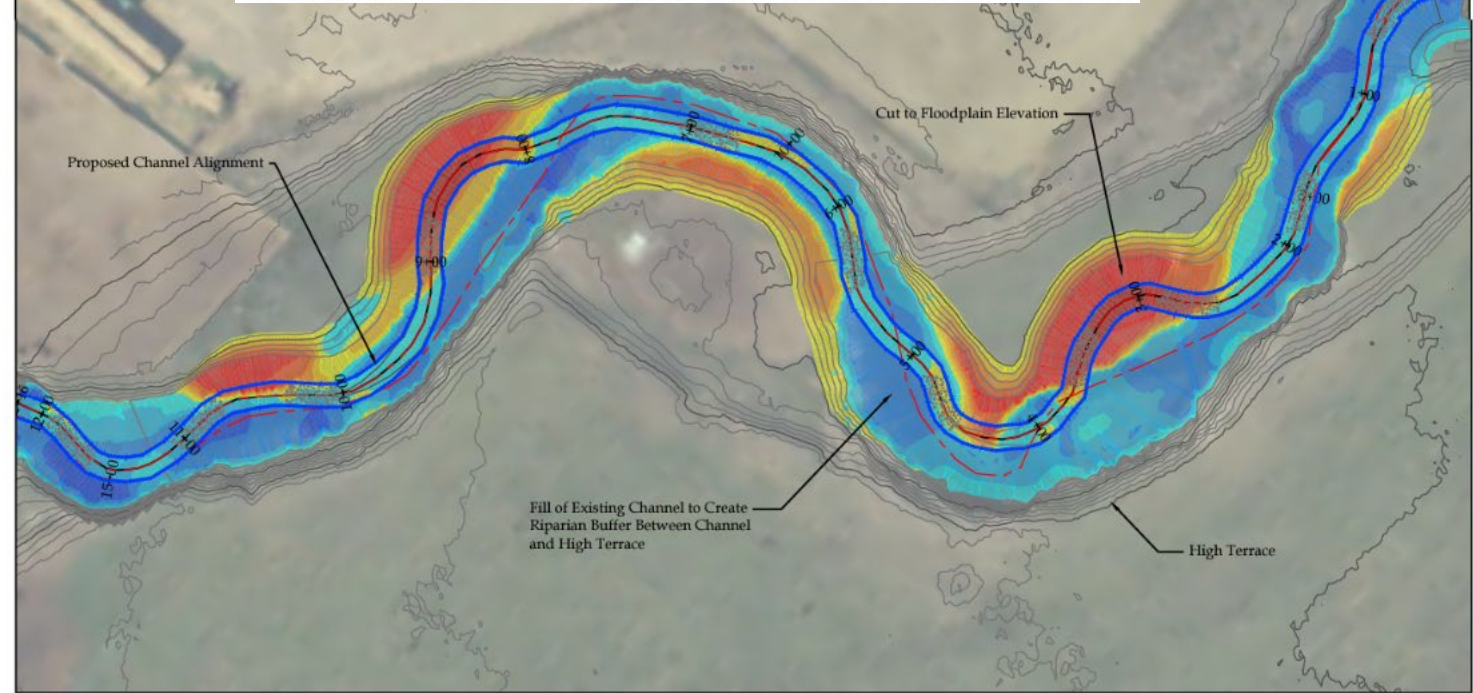
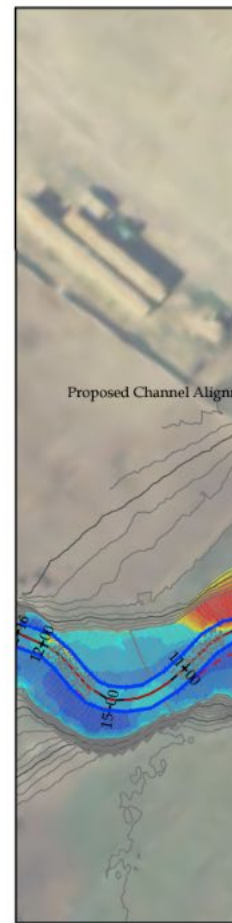
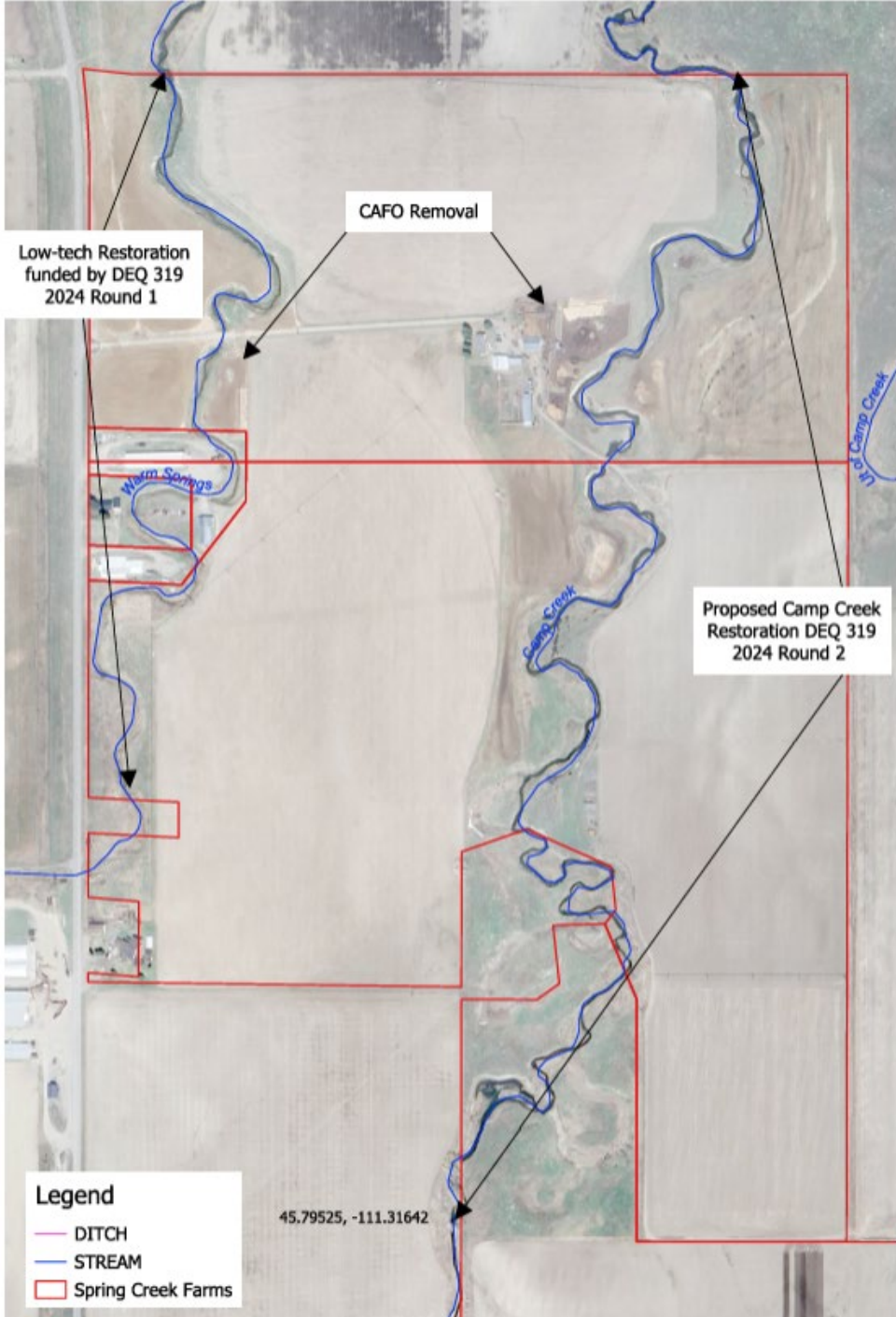
Camp Creek Headwaters Restoration



Legend

- ▭ TEI Inc. Property
- ▭ Camp Creek Watershed
- ▭ Gallatin Watershed

Figure 10: BDA design typicals taken from the Low-Tech Process-Based Restoration of Riverscapes Design Manual



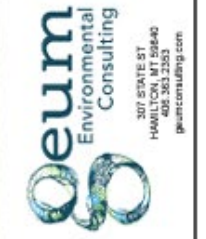
General Notes:
This map shows a conceptual cut and fill distribution in a typical

EARTHWORK QUANTITIES



RESTORATION GOALS

- INCREASE RIPARIAN WOODY VEGETATION COVER
- REDUCE FINE SEDIMENT INPUTS
- INCREASE AQUATIC HABITAT DIVERSITY
- INCREASE FLOODPLAIN CONNECTIVITY AND FUNCTION



DATUM: North American Datum 1983
 PROJECTION: Montana State Plane
 UNIT: INTL Foot
 DATA SOURCES:
 Geum LAS Imagery, 07/23
 Esri Basemap Imagery, 2010
 Missoula County Cadastre, 2020

RESTORATION TREATMENT OVERVIEW

MILLER CREEK LEIK PARCEL RESTORATION PROJECT
 MISSOULA, MONTANA

DRAWN BY: Geum
 DESIGNED BY: Geum
 DATE: February 2024

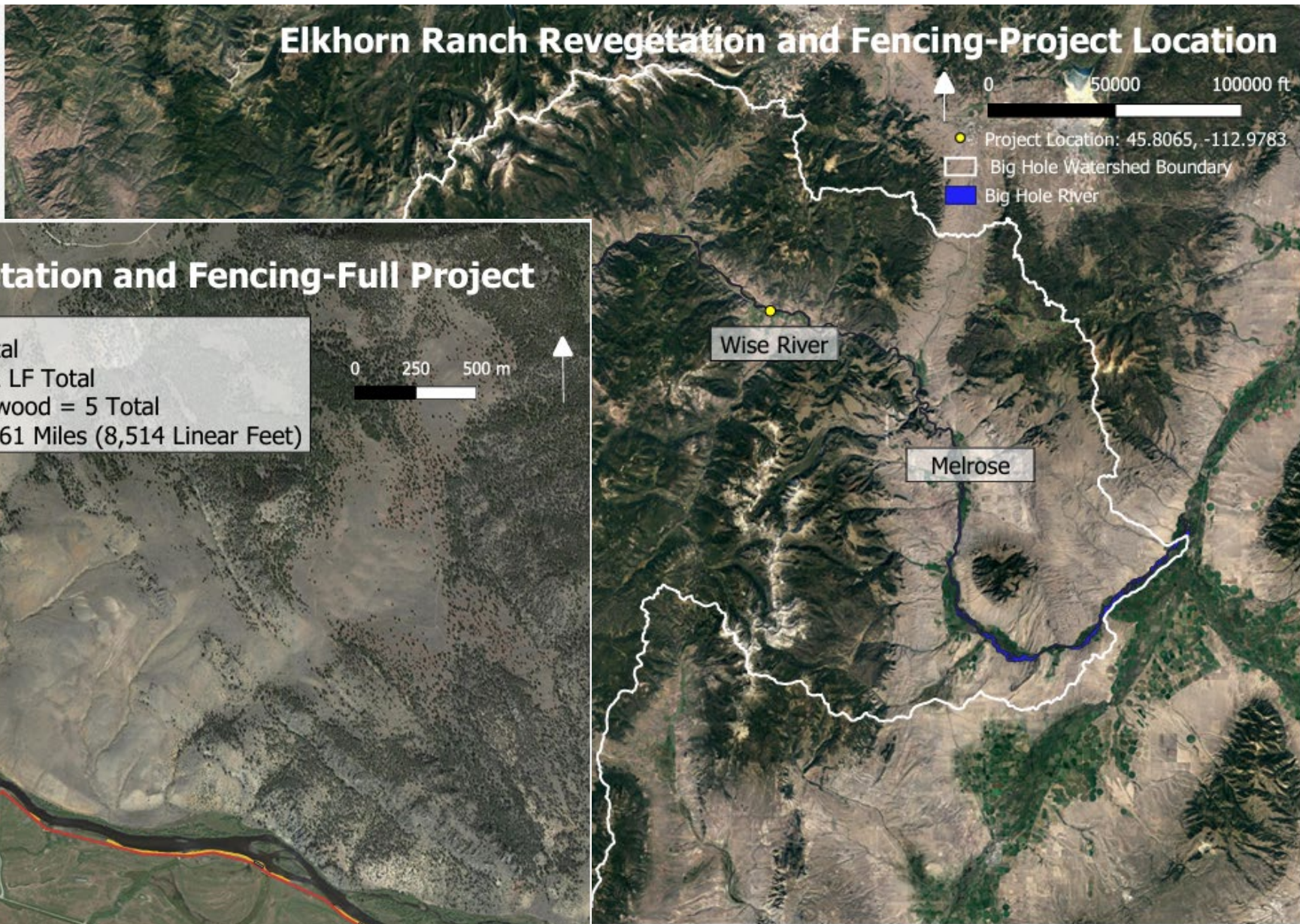
SHEET
3.0

DESIGN RESTORATION TREATMENTS

- | | | | |
|--|--|---|--|
|  CHANNEL REALIGNMENT |  FLOODPLAIN GRADING & ENHANCEMENT |  WOODY DEBRIS MATRIX |  LARGE WOOD STRUCTURE |
|  HIGH FLOW CHANNEL |  EXISTING CHANNEL FILL TO CREATE FLOODPLAIN |  HIGH FLOW CHANNEL WOODY DEBRIS MATRIX |  STEP POOL STRUCTURE |
|  INEZ CREEK REALIGNMENT |  HARDENED CROSSING |  WILLOW BRUSH TRENCH |  PARCEL BOUNDARY |
|  ALCOVE |  FLOODPLAIN TREATMENT | | |



Elkhorn Ranch Revegetation and Fencing-Project Location



Elkhorn Ranch Revegetation and Fencing-Full Project

- Unvegetated Banks = 6,768 LF Total
- Bank Reshaping and Sloping = 912 LF Total
- Exclosure Plots: Aspen and Cottonwood = 5 Total
- Proposed New Riparian Fence = 1.61 Miles (8,514 Linear Feet)

0 250 500 m

