

NOTICE OF PUBLICATION OF CATEGORICAL EXCLUSION  
TOWN OF KALISPELL EMERGING CONTAMINANTS PFAS WATER MAIN  
IMPROVEMENTS—2025

August 15, 2025

The Montana Department of Environmental Quality has reviewed the above-named project. The project consists of installing approximately 10,442 lineal feet of various sized replacement water mains, including all associated valves, fire hydrants, fittings, service lines, service connections, and asphalt replacement. The proposed project will replace existing undersized and aged pipe in the following areas:

- Buffalo Hill Tank Piping: Includes upsizing an existing water main to convey water between the two lower pressure zone water storage tanks located near Buffalo Hill Golf Course.
- Noffsinger Transmission Main: Includes the construction of a transmission main to convey water from the Noffsinger springs water source to the lower pressure zone water storage tanks located near the Buffalo Hill Golf Course.
- Woodland Avenue Connector: Includes installing a connector along Woodland Avenue between E Center Street and Albina Street to increase system efficiency for a future water source located at Dry Bridge Park.

Pursuant to ARM 17.40.318, the Department has concluded that the proposed project meets the Categorical Exclusion criteria of the National Environmental Policy Act (NEPA) and the Montana Environmental Policy Act (MEPA). The Categorical Exclusion may be revoked if the project is not initiated within the time-period specified in the planning documents, a new or modified application is submitted, or new evidence demonstrates serious local or environmental issues exist, or state, local, tribal, or federal laws are violated. The documentation for the Categorical Exclusion is available for public review at <http://deq.mt.gov/public/publicnotice> and at the following locations:

Department of Environmental Quality  
State Revolving Fund Loan Program  
1520 East Sixth Avenue  
Helena, MT 59601

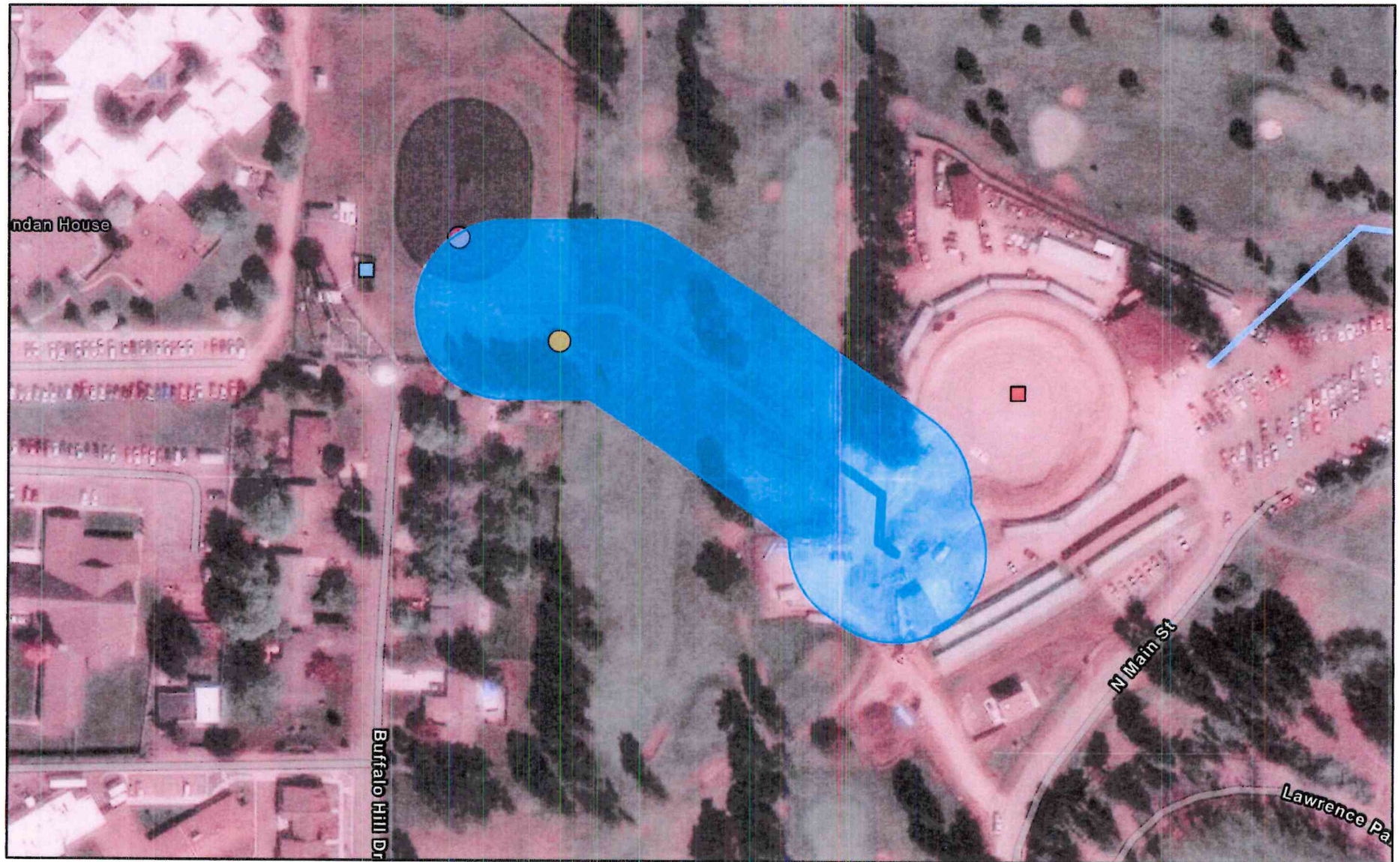
City of Kalispell  
201 First Ave. East  
Kalispell, MT 59901

Sincerely,



Sandie Koenig, PE, DWSRF Engineering Manager  
Engineering Bureau  
Water Quality Division  
Montana Department of Environmental Quality

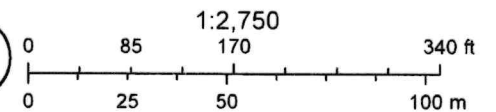
# Potential Contaminant Source Review - Buffalo Hill Tank Piping



8/1/2025, 10:34:21 AM

Montana Public Water Supply Facilities Potential Contaminant Source Review Points Potential Contaminant Source Review Lines

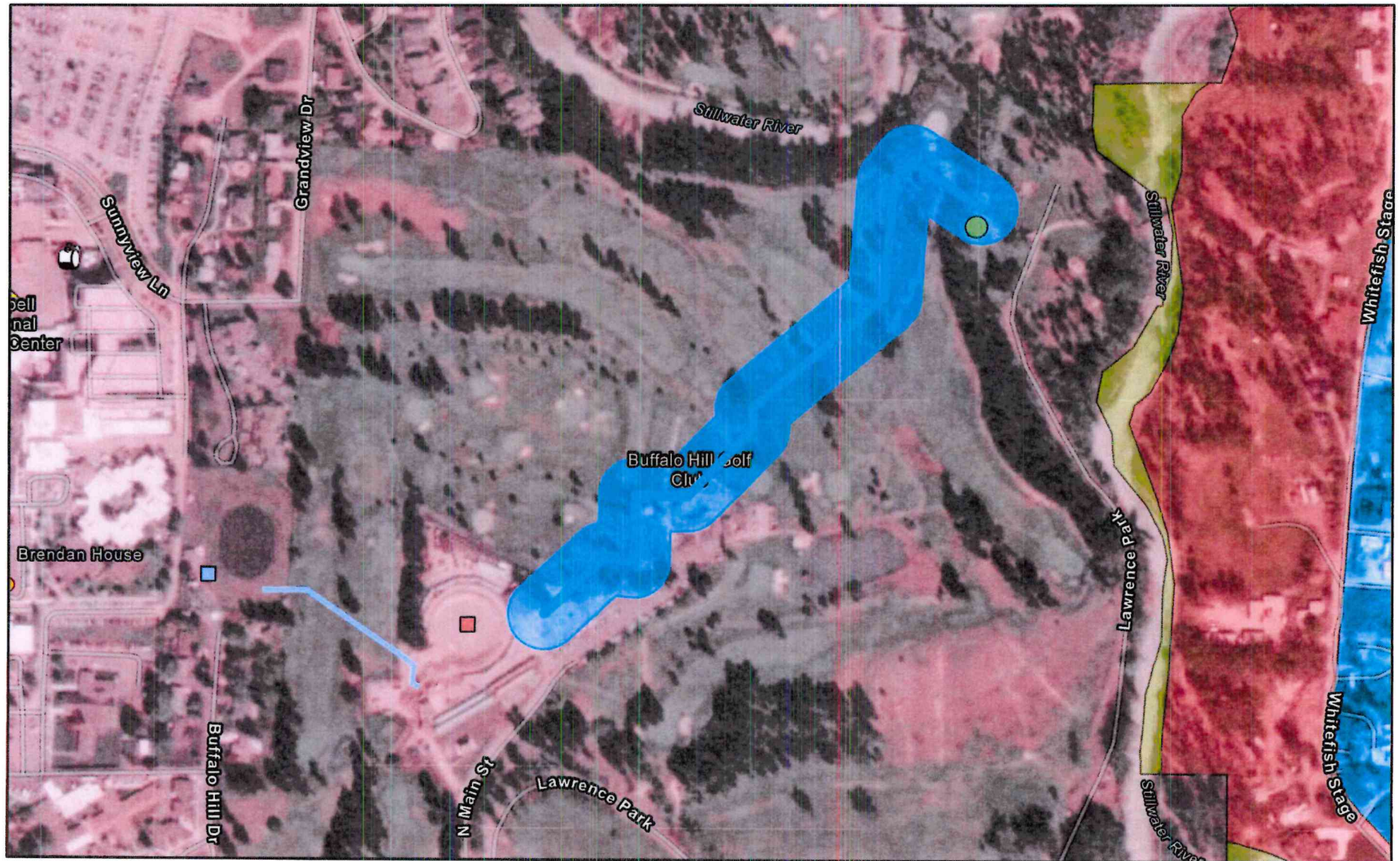
- |                    |               |                          |
|--------------------|---------------|--------------------------|
| ○ STORAGE FACILITY | ■ Completed   | — In Progress            |
| ○ PUMP FACILITY    | ■ In Progress | ■ Municipal Sewer System |



Source: Esri, Maxar, Earthstar Geographics, and the GIS User Community, Esri Community Maps Contributors, Montana State Library, ©



# Potential Contaminant Source Review - Noffsinger Transmission



8/1/2025, 10:28:32 AM

Montana Public Water Supply Facilities

- TREATMENT PLANT
- SPRING

Potential Contaminant Source Review Points

- Completed

- In Progress

Potential Contaminant Source Review Lines

- In Progress

- Underground Storage Tank Facilities



Underground Storage Tanks



Hazardous Waste Handlers



Low Septic Density



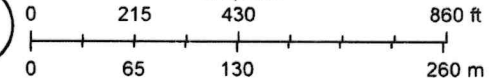
Medium Septic Density

High Septic Density

Municipal Sewer System



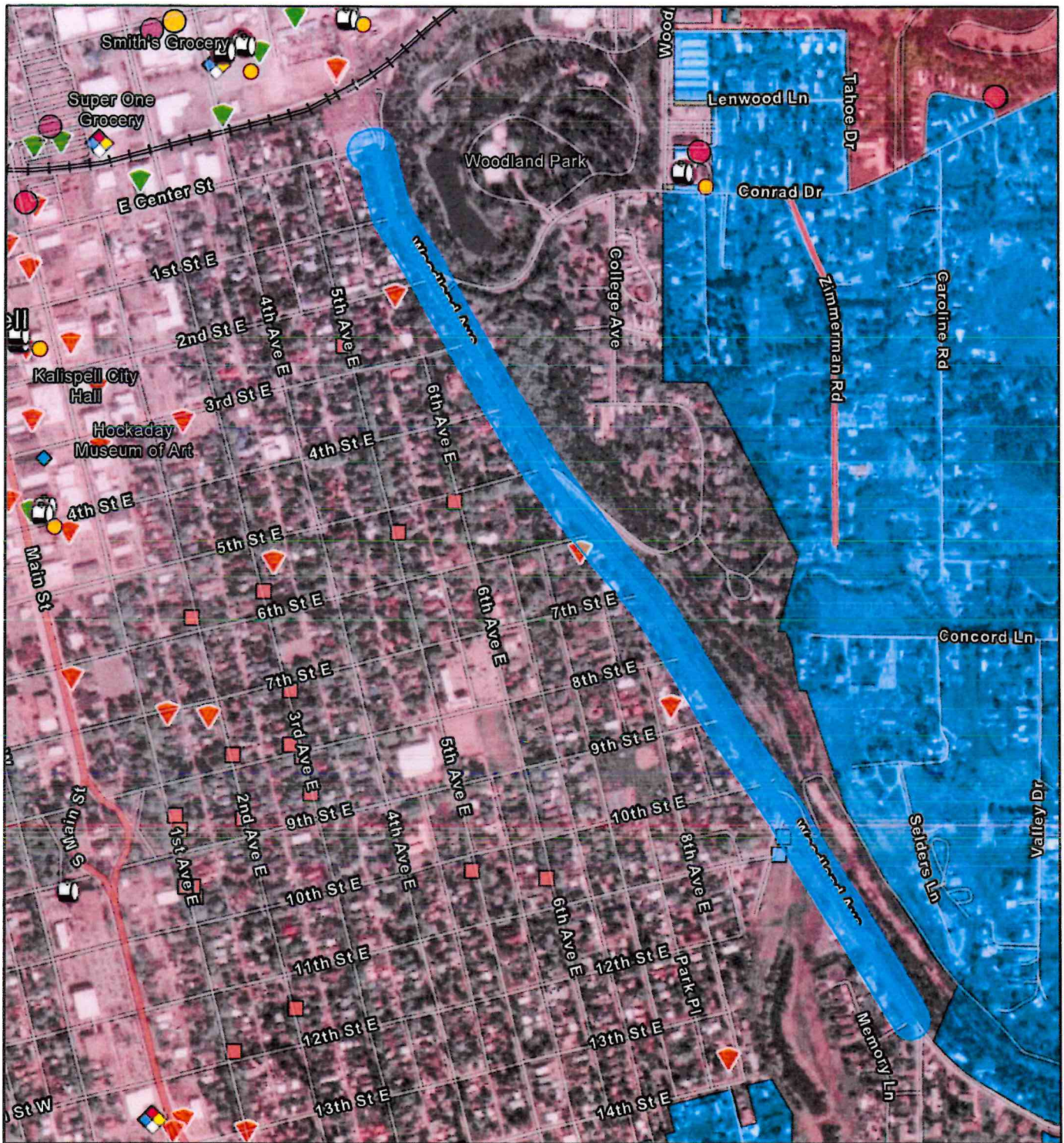
1:6,890



Source: Esri, Maxar, Earthstar Geographics, and the GIS User Community, Esri Community Maps Contributors, Montana State Library, ©



# Potential Contaminant Source Review - Woodland Transmission



8/1/2025, 10:32:23 AM

1:13,194

## Montana Public Water Supply Facilities

- WELL
- PRESSURE CONTROL
- TREATMENT PLANT
- STORAGE FACILITY
- CONSECUTIVE CONNECTION

## Potential Contaminant Source Review Points

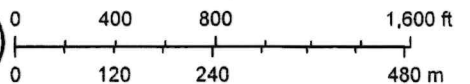
- Completed
- In Progress

## Potential Contaminant Source Review Lines

- Completed
- In Progress
- ◆ Montana State Superfund Unit Facilities
- Underground Storage Tank Facilities
- Underground Storage Tanks
- ◆ Hazardous Waste Handlers

## Petroleum Tank Substance Releases

- Open
- Resolved
- Low Septic Density
- Medium Septic Density
- High Septic Density
- Municipal Sewer System
- Railroads



Esri Community Maps Contributors, Montana State Library, Esri, TomTom, Garmin, SafeGraph, GeoTechnologies, Inc, MET/NASA, USGS, Bureau of Land Management, EPA, NPS, US Census Bureau, USDA, USFWS, Source: Esri, Maxar, Earthstar Geographics, and the GIS User Community



## CHAPTER IV - ATTACHMENT A

### DOCUMENTATION OF CATEGORICAL EXCLUSION DETERMINATION CHECKLIST

Project Name / Brief Description: Emerging Contaminants PFAS-Water Main Improvements-2025

Project Number: \_\_\_\_\_

Date: 08/14/2025

Preparer: Denver Fraser, PE

The Department action under Title 75, chapter 5, part 11 and or chapter 6, part 1 or 2, MCA, is excluded from the requirement to prepare an environmental assessment (EA) or environmental impact statement (EIS) if the application for department review is for any of the following projects:

**(a) Projects relating to existing infrastructure systems such as sewer systems, drinking water supply systems, and stormwater systems, including combined sewer overflow systems that involve:**

*[Answer yes or no. If all answers "no", an EA or EIS must be completed. If any answer is yes, skip to (b).]*

1. minor upgrading;

Yes ☐ No ☒

2. minor expansion of system capacity;

Yes ☐ No ☒

3. rehabilitation (including functional replacement) of the existing system and system components;

Yes ☒ No ☐

4. construction of new minor ancillary facilities adjacent to or on the same property as existing facilities; or

Yes ☐ No ☒

5. projects in unsewered communities involving the replacement existing on-site systems, provided that the new on-site systems do not result in substantial increases in the volume of discharges or in loadings of pollutants from existing sources, and do not relocate existing discharges.

Yes ☐ No ☒

**(b) A categorical exclusion may not be granted for a department action if:**

*[Answer yes or no. If all answers "no", skip to (c). If any answer is yes, an EA or EIS must be completed.]*

6. the action would authorize facilities that will provide a new discharge or relocate an existing discharge to ground or surface waters;

Yes ☐ No ☒

7. the action would result in an increase above permit levels established for the facility under the Montana pollutant discharge elimination system or Montana ground water pollution control system for either volume of discharge or loading rate of pollutants to receiving waters;

Yes ☐ No ☒

8. the action would authorize facilities that will provide capacity to serve a population at least 30% greater than the existing population;

Yes ☐ No ☒

9. the action is not supported by the state, or other regional growth plan or strategy;

Yes ☐ No ☒

10. the action directly or indirectly involves or relates to upgrading or extending infrastructure systems primarily for the purposes of future development;

Yes ☐ No ☒

11. the department has received information indicating that public controversy exists over the project's potential effects on the quality of the human environment;

Yes ☐ No ☒

12. the department determines that the proposed project that is the subject of the state action shows some potential for causing a significant effect on the quality of the human environment, based on ARM 17.4.608, or might possibly affect:

(i) sensitive environmental or cultural resource areas; or

(ii) endangered or threatened species and their critical habitats.

Yes ☐ No ☒

**(c) If the proposed project meets the conditions above in determining use of a CATEX, the reviewer will then complete items 13 - 17 as follows:**

*[Once all steps 1- 17 are complete, reviewer shall sign and date at bottom. If revocation becomes necessary, reviewer shall initiate an EA or EIS as appropriate.]*

13. Project meets the above Categorical Exclusion criteria. Yes

14. DEQ determination of Categorical Exclusion. Yes

15. DEQ distributes the Notice of Determination. Yes

16. Notice of Publication and cover letter (containing revocation language below) is delivered to recipient. Yes

17. Notice of Publication published in local newspaper by recipient and evidence of publication provided to reviewer. \_\_\_\_\_

**(d) The department may revoke a categorical exclusion if:**

*[Only complete the steps below 18 – 21 if revocation of a previously implemented CATEX becomes necessary.]*

18. the project is not initiated within the time period specified  
in the facility plan, or a new or modified application is submitted; \_\_\_\_\_

19. the proposed action no longer meets the requirements for  
a categorical exclusion because of changes in the proposed action; \_\_\_\_\_

20. new evidence demonstrates that serious local  
or environmental issues exist; or \_\_\_\_\_

21. state, local, tribal, or federal laws may be violated. \_\_\_\_\_

Denver Fraser, PE

\_\_\_\_\_  
**STATE PREPARER**

Sandie Koenig, PE

\_\_\_\_\_  
**STATE REVIEWER**

08/15/2025

\_\_\_\_\_  
**COMPLETION DATE**