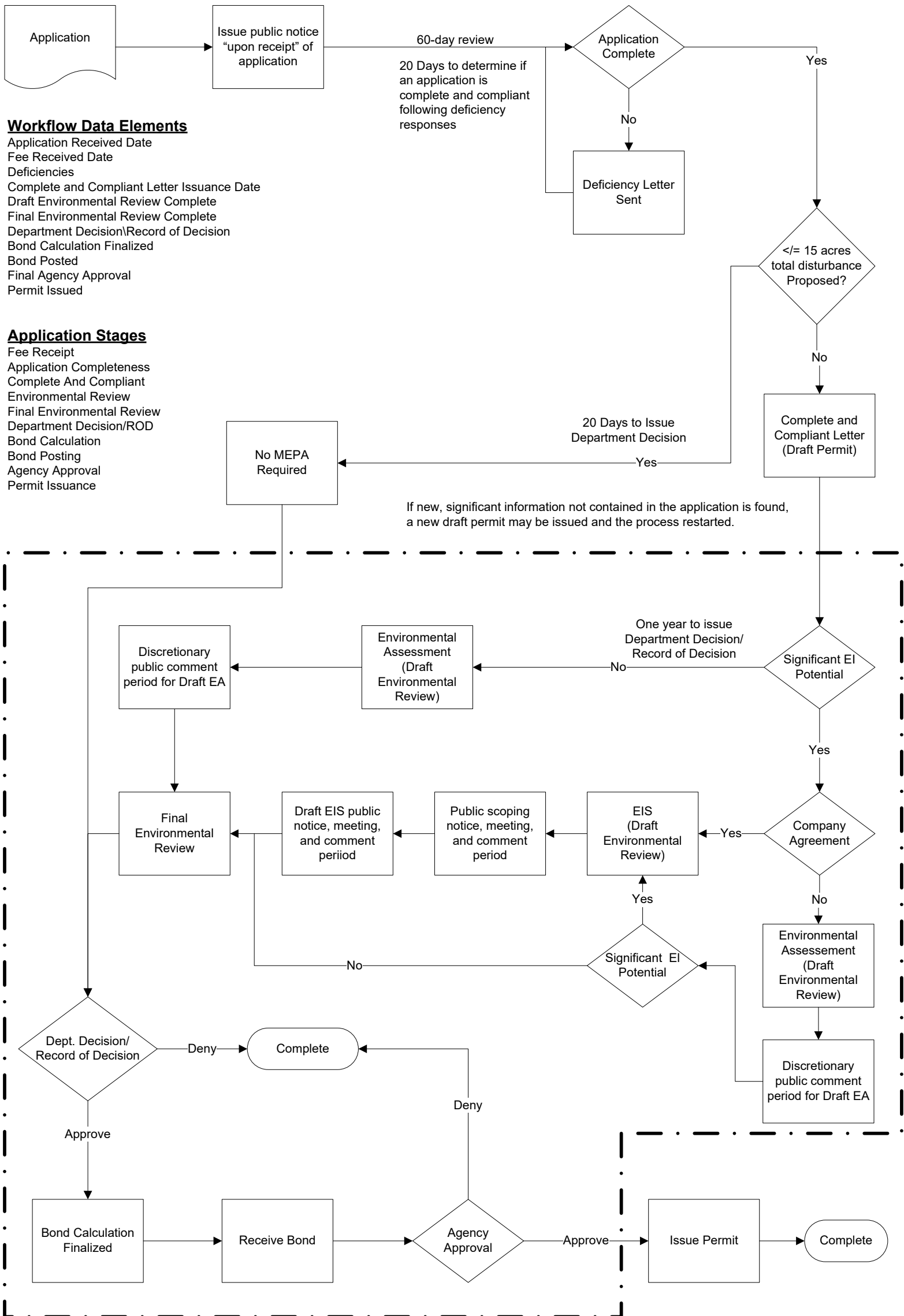


Figure 1. Processing Rock Products Operating Permit Applications

Operating Permit Application



Workflow Data Elements

- Application Received Date
- Fee Received Date
- Deficiencies
- Complete and Compliant Letter Issuance Date
- Draft Environmental Review Complete
- Final Environmental Review Complete
- Department Decision\Record of Decision
- Bond Calculation Finalized
- Bond Posted
- Final Agency Approval
- Permit Issued

Application Stages

- Fee Receipt
- Application Completeness
- Complete And Compliant Environmental Review
- Final Environmental Review
- Department Decision/ROD
- Bond Calculation
- Bond Posting
- Agency Approval
- Permit Issuance

NOTE: "EI" signifies an Environmental Impact; "EIS" signifies an Environmental Impact Statement
 "One year to issue Department Decision/Record of Decision" also includes the bond determination.