

August 25, 2021

Montana Department of Environmental Quality
520 E. 6th Avenue
P.O. Box 200901
Helena, MT 59620-0901

Attn: Whitney Bausch

Re: Butte Blackjack Operating – Exploration License Application Modification

Butte Blackjack Operating is submitting the following modifications to the Butte Project Exploration License Application via this transmittal letter:

Figure 1 – Site Map

- General depictions of lease boundaries have been revised in response to accurate land ownership and survey information. Drilling areas have been modified accordingly.

Figure 2 – Missoula Drill Sites

- Lease boundary has been revised in response to accurate land ownership and survey information;
- Drill site M-1 has been deleted from the plan;
- Map depiction of drill sites M-2, M-3, and M-4 has been revised in response to actual surveyed locations; the sites staked in the field have not changed.

Figure 3 – Badger Drill Areas

- Lease boundary has been revised in response to accurate land ownership and survey information;
- Drill site B-7 has been deleted from the plan to eliminate disturbance to a remediated area;
- Overland access routes have been revised to avoid remediated areas. Previous total length of overland access was 950 feet; modified access routes total 1,250 feet of overland travel;
- Access to Drill site B-3 has been revised to use an existing road and avoid a narrow draw – a Kelley-bump ditch in the road will need to be filled in to allow safe access to the B-3 site;
- Locations for drill sites B-1, B-2 and B-3 will be field adjusted to be near existing roadways.

Revisions to the **Dimension and Quantities** summary and **Table I** from the May 28, 2021 Exploration License application that reflect these modifications are included as **Attachment A**. Total number of drill pads, drill holes and cumulative depth has been reduced from the original application. Updated Figures are presented in **Attachment B**.

We look forward to DEQ's review of these modifications; please let us know if you have any questions or need clarification of this information for the presentation on August 30.

Regards,

Mark Hartmann
Chief Operating Officer
Butte Blackjack Operating

ATTACHMENT A

TABLE 1 (REVISED)

Table 1. Estimated Drill Hole Depths / Locations (Revised August 25, 2021)				
PAD	NORTHING	EASTING	HOLE	DEPTH (FT)
Badger Drill Pad Locations				
B1	BJS21-1	39900	29650	1050
B1	BJS21-2	39900	29650	1200
B1	BJS21-3	39900	29650	920
B1	BJS21-4	39900	29650	750
B2	BJS21-5	39900	30060	900
B2	BJS21-6	39900	30060	700
B2	BJS21-7	39900	30060	780
B2	BJS21-8	39900	30060	630
B2	BJS21-9	39900	30060	600
B2	BJS21-10	39900	30060	900
B3	BJS21-11	39900	30550	600
B3	BJS21-12	39900	30550	650
B3	BJS21-13	39900	30550	500
B4	BJS21-14	39270	29700	700
B4	BJS21-15	39270	29700	400
B6	BJS21-16	39440	29580	550
B6	BJS21-17	39440	29580	600
B8	BJS21-18	38550	30500	750
B8	BJS21-19	38550	30500	950
B8	BJS21-20	38550	30500	750
B8	BJS21-21	38550	30500	750
B9	BJS21-22	38550	30500	950
B8	BJS21-23	38550	30500	800
B9	BJS21-24	38570	30900	1000
B9	BJS21-25	38570	30900	900
B9	BJS21-26	38570	30900	975
Subtotal	26		26	20,255
Missoula Drill Pad Locations				
M2	BJS21-29	36745	26130	1000
M2	BJS21-30	36745	26130	1000
M2	BJS21-31	36745	26130	1000
M2	BJS21-32	36745	26130	1000
M2	BJS21-33	36745	26330	1000
M2	BJS21-34	36745	26330	1000
M3	BJS21-35	36745	26530	1000
M3	BJS21-36	36745	26530	1000
M4	BJS21-37	36790	26630	1000
Subtotal	9		9	9,000
TOTAL	35		35	29,255

DIMENSIONS and QUANTITIES (REVISED AUGUST 25, 2021)

Drill Pads: 10 Quantity 40ft L x 30ft W Various thickness of soil will be salvaged ranging from **6 to 12 inches** removed for reclamation use. The site will be compacted to support the drill equipment.

Drill Sumps 10 Quantity: 15ft L x 20ft W 8 ft avg depth of material to be excavated

Drill Holes (if max depths vary by location, provide a table of drill hole ID, location, max depth)

Quantity 35 Estimated values - Max Depth (ft) 1500 ft. total cumulative estimated depth (all holes added) **29,255 ft (< 29,300 ft).**

Trenches/Pits_Quantity: __L x __W x __avg depth of material to be excavated

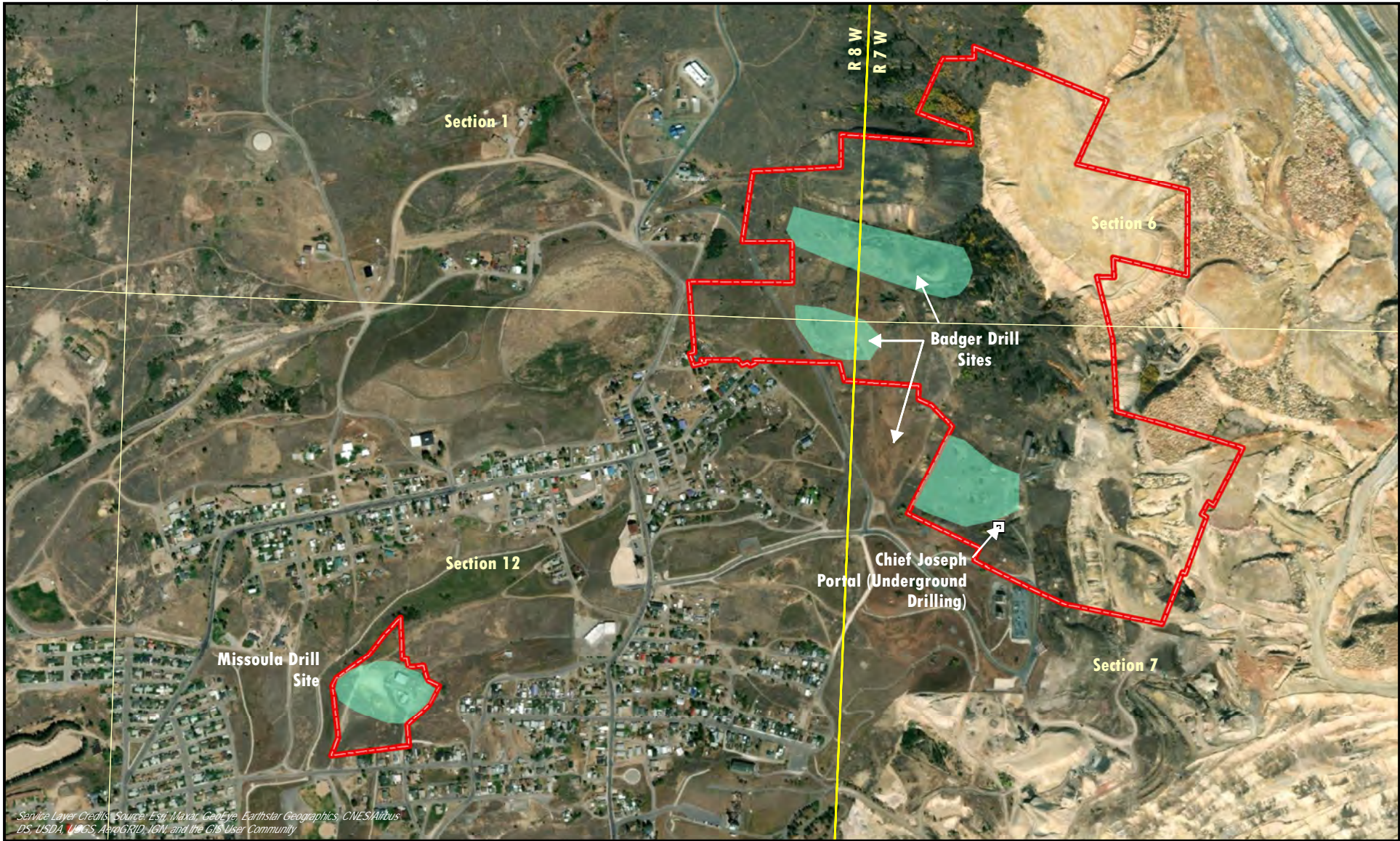
Roads __L 225 ft W 20 ft x 12 inches avg depth of material moved and/or compacted

Overland Travel 1,250 ft L 10 ft W

Laydown __L x __W x __avg depth of material moved and/or compacted

Other Features: (*camp, culverts, waste piles, slash piles, heli pads, etc.*) *describe features and include dimensions*



ATTACHMENT B - FIGURES



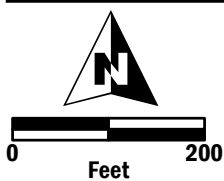
Service Layer Credits: Source: Esri, Maxar, GeoEye, Earthstar Geographics, CNES/Airbus DS, USDA, USGS, AeroGRID, IGN, and the GIS User Community



0 Feet 1,000
BLACKJACK SILVER
CORPORATION 

- Township 3 North
-  Approximate Claim Boundary
 -  Surface Diamond Drilling Areas

Site Map
Blackjack Project
Butte, Montana
FIGURE 1

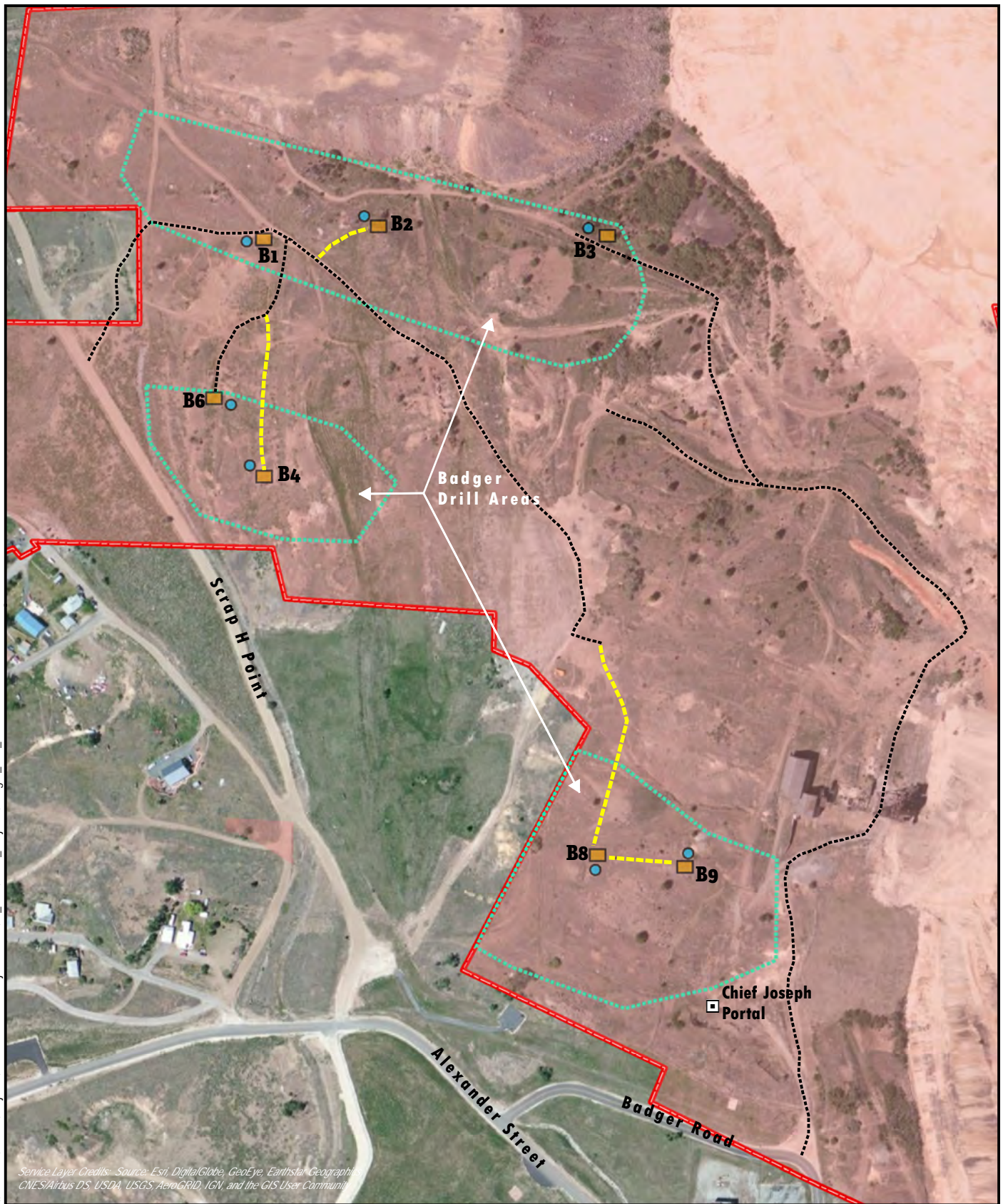


Note: Drill pads are approximately 40' x 30'. Sumps are approximately 15'x20' by 8' deep and will be field located.

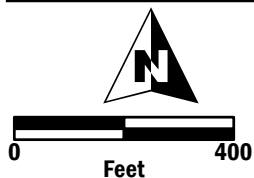
- Approximate Claim Boundary
- Ferry Lane Limited
- Surface Diamond Drilling Areas
- Overland Access to Drill Pad
- Drill Pads
- Sumps

Missoula Drill Site
Blackjack Project
Butte, Montana
FIGURE 2








\\nhelena\shares\Projects\350.0582.000 Blackjack Silver\05_GIS\05.01_Projects\Badger_Drill_Area.mxd



Service Layer Credits: Source: Esri, DigitalGlobe, GeoEye, Earthstar Geographics, CNES/Airbus DS, USDA, USGS, AeroGRID, IGN, and the GIS User Community



NewFields

-  Approximate Claim Boundary
-  Surface Diamond Drilling Areas
-  Drill Pads
-  Sumps
-  Ferry Lane Limited
-  Overland Access to Drill Pad
-  Existing Roads

Note: Drill pads are approximately 40' x 30'. Sumps are approximately 15' x 20' by 8' deep and will be field located.

**Badger Drill Areas
Blackjack Project
Butte, Montana
FIGURE 3**