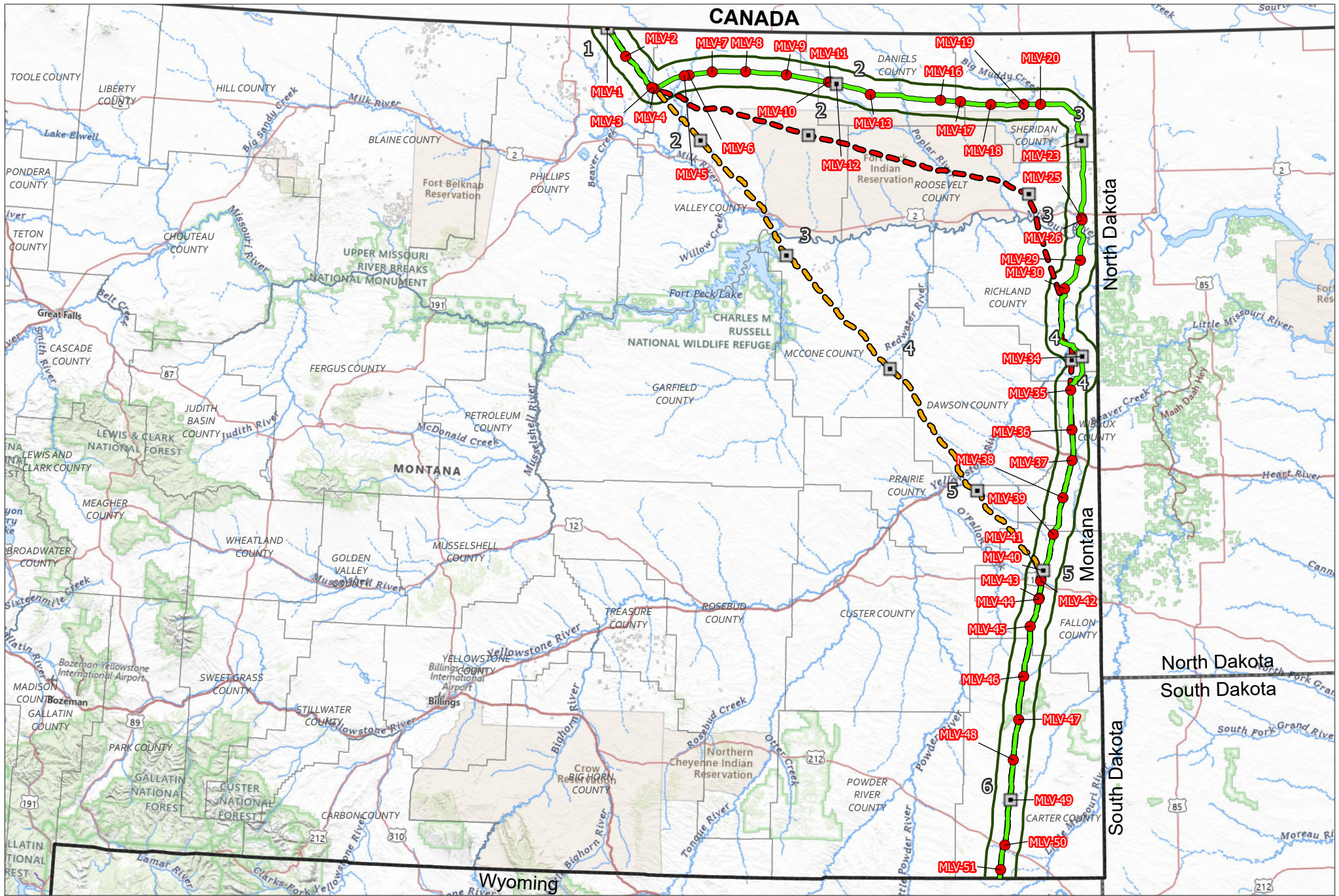


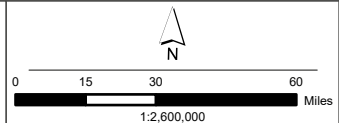
# 1. Project Overview

# CANADA



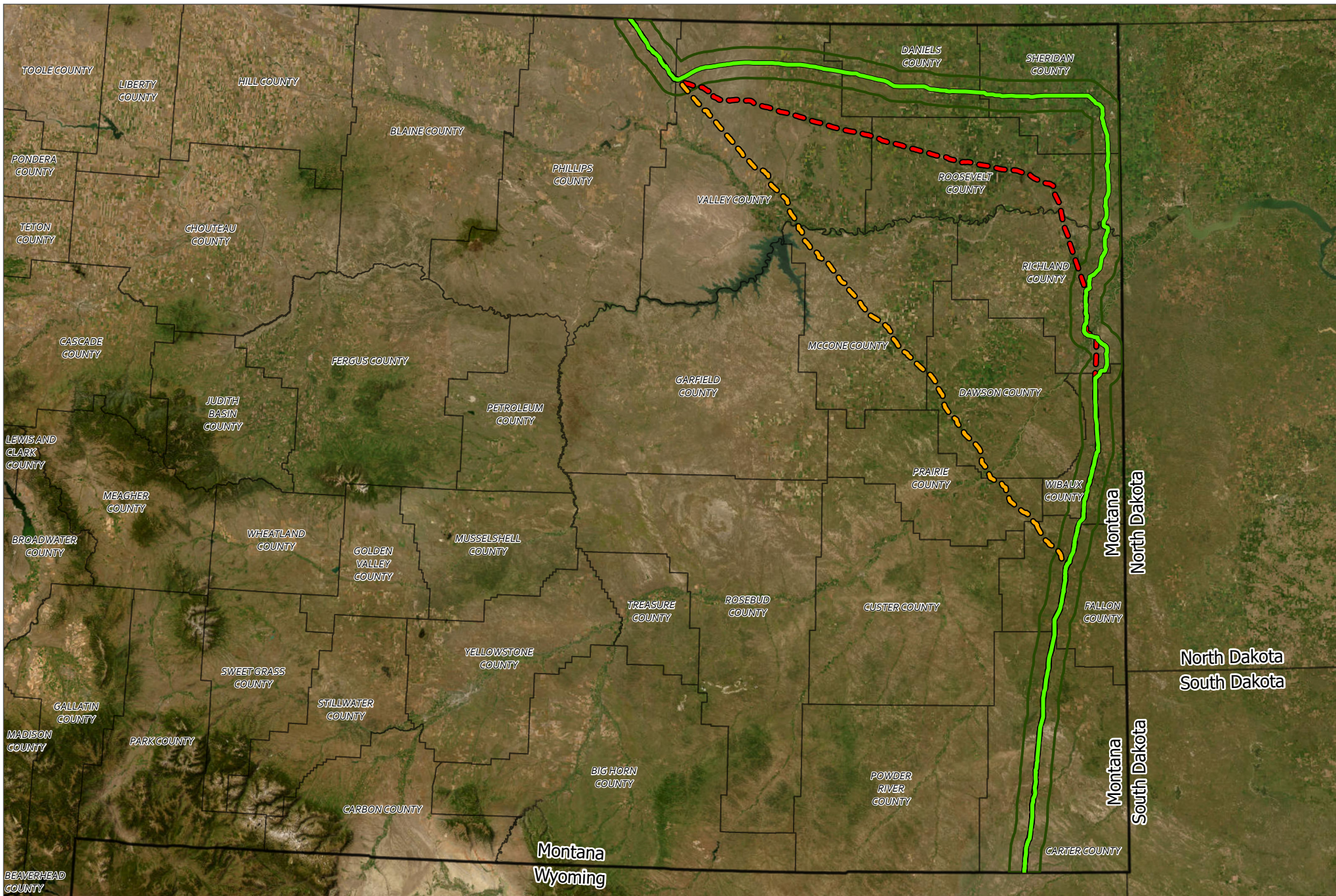
## Bridger Pipeline Expansion Overview Survey: Project Overview

- Proposed Route
- - - Option 2
- - - Option 3
- Study Area
- Bridger Pump Stations
- Bridger Potential Valve Locations






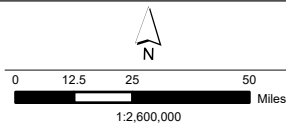
MAP CREATED BY: Andrew Baum  
 DATE: 3/23/2026  
 BACKGROUND: USGS National Topographic Map  
 DATA SOURCES: Ulteig, ESRI

## 2. Aerial Overview



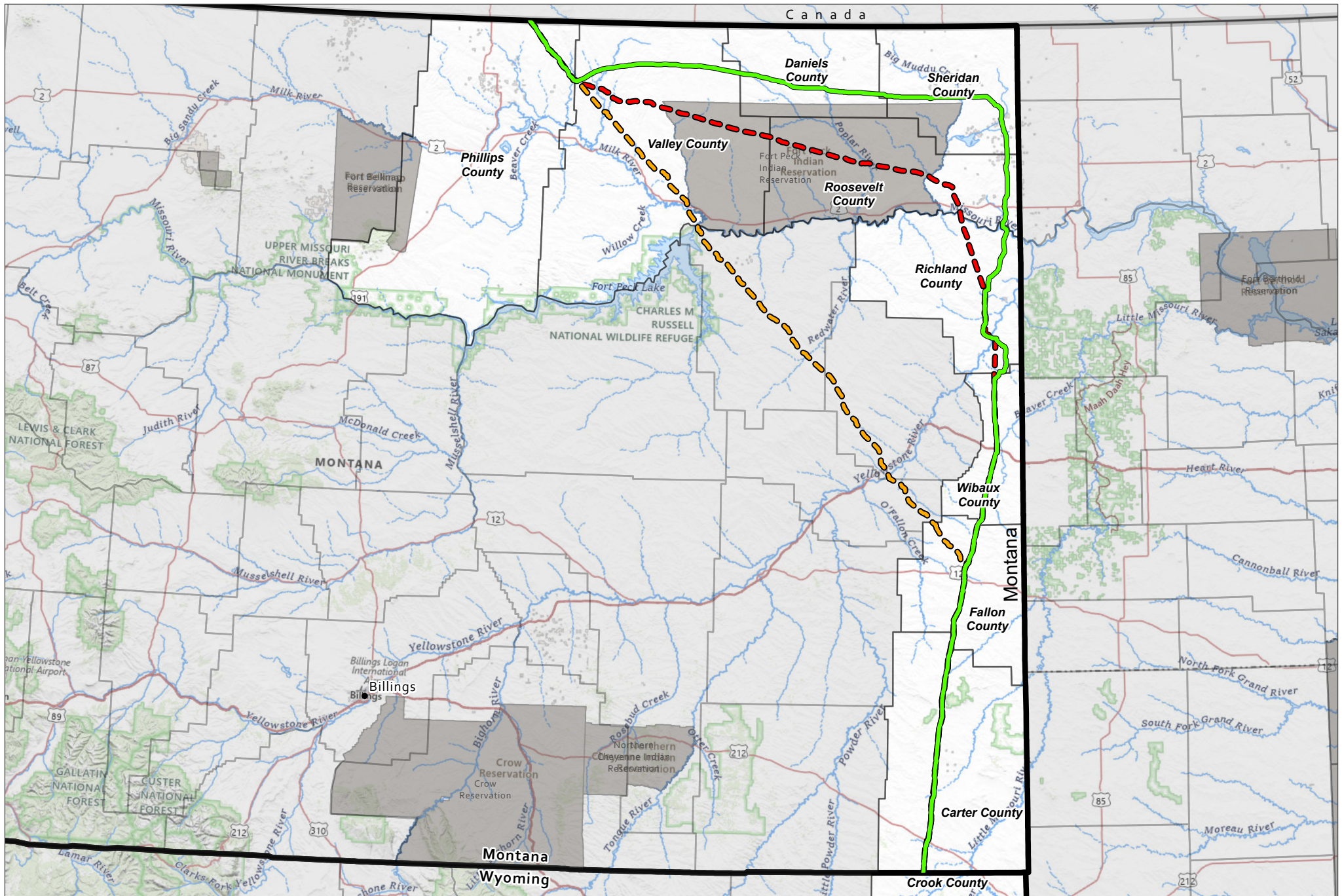
**Bridger Pipeline Expansion  
Aerial Overview**

-  Proposed Route
-  Option 2
-  Option 3
-  Study Area



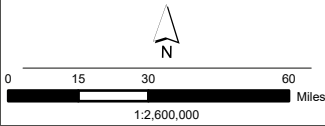
MAP CREATED BY: Andrew Baum  
DATE: 3/10/2026  
BACKGROUND: USGS National  
Topographic Map  
DATA SOURCES: Ulteig, ESRI

### 3. Route Options



**Bridger Pipeline Expansion  
Route Options**

- Proposed Route
- - - Option 2
- - - Option 3



MAP CREATED BY: Andrew Baum  
 DATE: 3/10/2026  
 BACKGROUND: USGS National  
 Topographic Map  
 DATA SOURCES: Ulteig, ESRI