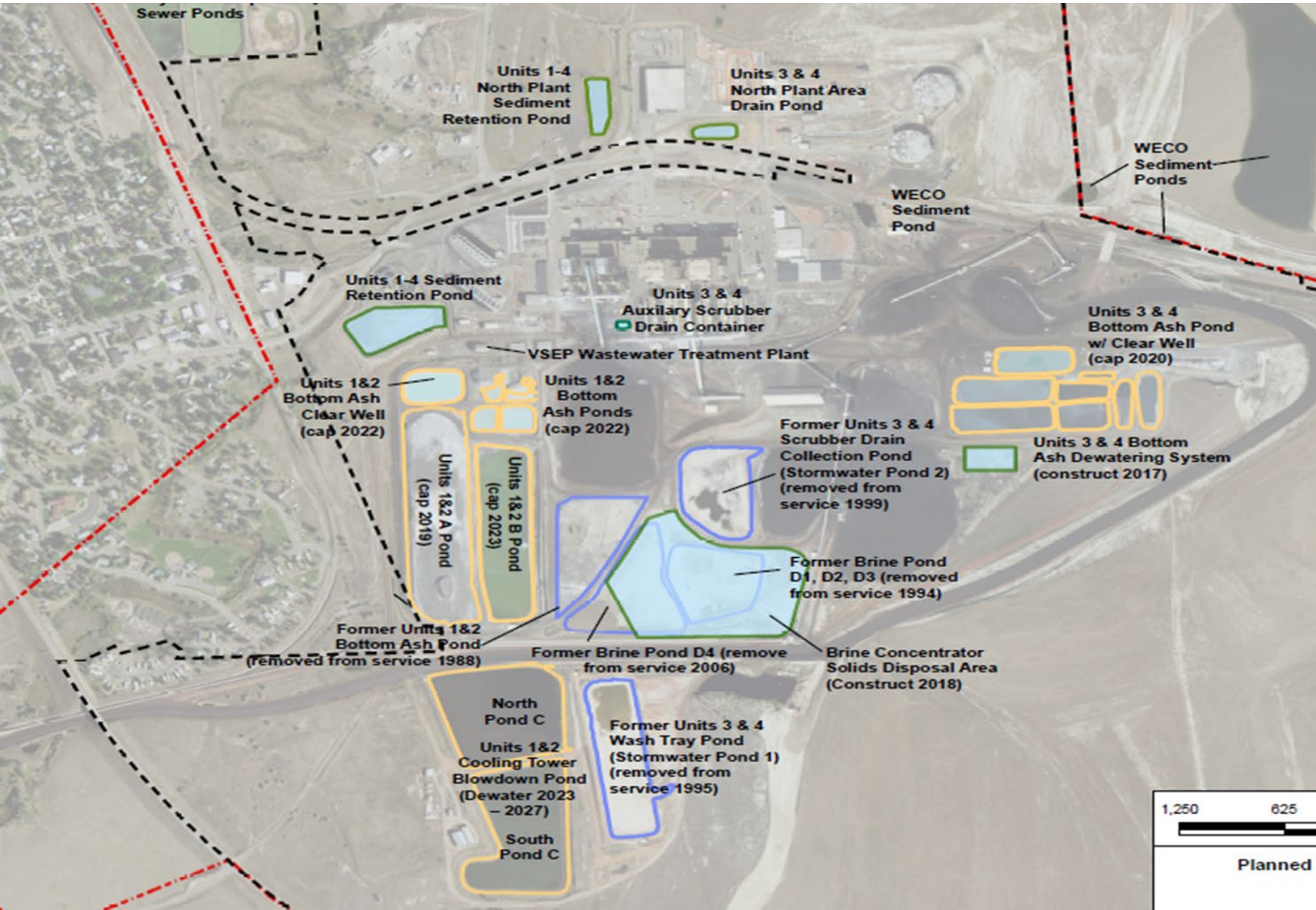


The background image shows the Colstrip Plant Site at dusk. The sky is a mix of light blue and orange, with a full moon visible in the upper right. Several tall smokestacks are visible, with some emitting a light smoke. The plant buildings are illuminated with lights, and their reflection is visible in the water in the foreground. The text is overlaid in white, bold, sans-serif font.

**Colstrip Plant Site  
CCR Rule  
Corrective Measures  
Assessment  
Alt4B Modification  
Public Meeting  
2/15/24**

# Plant Site Ponds



# Assessment of Corrective Measures – Plant Site

---

- Original ACM on Colstrip CCR Public Website April 2019
  - <https://www.talenenergy.com/ccr-colstrip/>
  - Analysis of the effectiveness of potential corrective measures
    - Be protective of human health & environment
    - Attain groundwater protection standards
    - Identify time required to begin and complete remedy
    - Discuss results in a public meeting
  
- Colstrip Wastewater AOC Remedy Evaluation Report provides requirements of the CCR Assessment of Corrective Measures
  - MDEQ has reviewed and approved the Plant Site Remedy Evaluation Report
  - Alternative 4 selected and approved for implementation
  - MDEQ Colstrip website
    - <https://deq.mt.gov/cleanupandrec/Programs/colstrip>

# Remedy Evaluation Report – Plant Site

---



## ■ Selection of Remedy Report 2/18/2020

- Alt. 4 - Source Control, Freshwater Flushing, Increased Capture
- Plant Site ponds closed per MDEQ-approved AOC Closure Plan and CCR Rule Closure Plan
- Capture Systems continue to capture impacted water (64 capture wells)
- Groundwater Capture Treatment System
- Permeable Reactive Barrier contingency
- 2 new horizontal capture wells
- 54 freshwater injection wells

## ■ Approved by MDEQ

- Groundwater capture & freshwater flushing implemented; closure activities underway



# Plant Site Alt. 4B Modification

---



- Closure of 1&2 B Pond and 1&2 Bottom Ash Pond modified to evaluate closure by removal instead of closure in place (request sent to MDEQ 7/17/23)
- Expected to be protective of groundwater
- All other components of previous selected and approved Alternative 4 remain in place
- Closure by removal of CCR material, placed in CCR Rule compliant Landfill located on plant site in area of removed ash ponds
- MDEQ preliminary decision to proceed with modification 10/2/23
  - Included public comment period and public meeting

# Plant Site Area





# Plant Site Alt4B Modification Landfill



# Plant Site Alt4B Modification

---



- **Source Control (closure by removal),**  
Freshwater Flushing, Increased Groundwater Capture
  - Provides protection of human health & environment
  - Meets clean-up criteria and groundwater protection standards
  - New landfill scheduled for 2024 start
  - CCR material scheduled to be relocated 2024 – 2026
  - Landfill closure scheduled for 2026
  - Modeling indicates clean-up criteria met within 30 years
    - Most parameters much sooner
  - Estimated cost \$100m
  - Under CCR Rule, Corrective Measures (Remedy) to be selected no sooner than 30 days after public meeting