

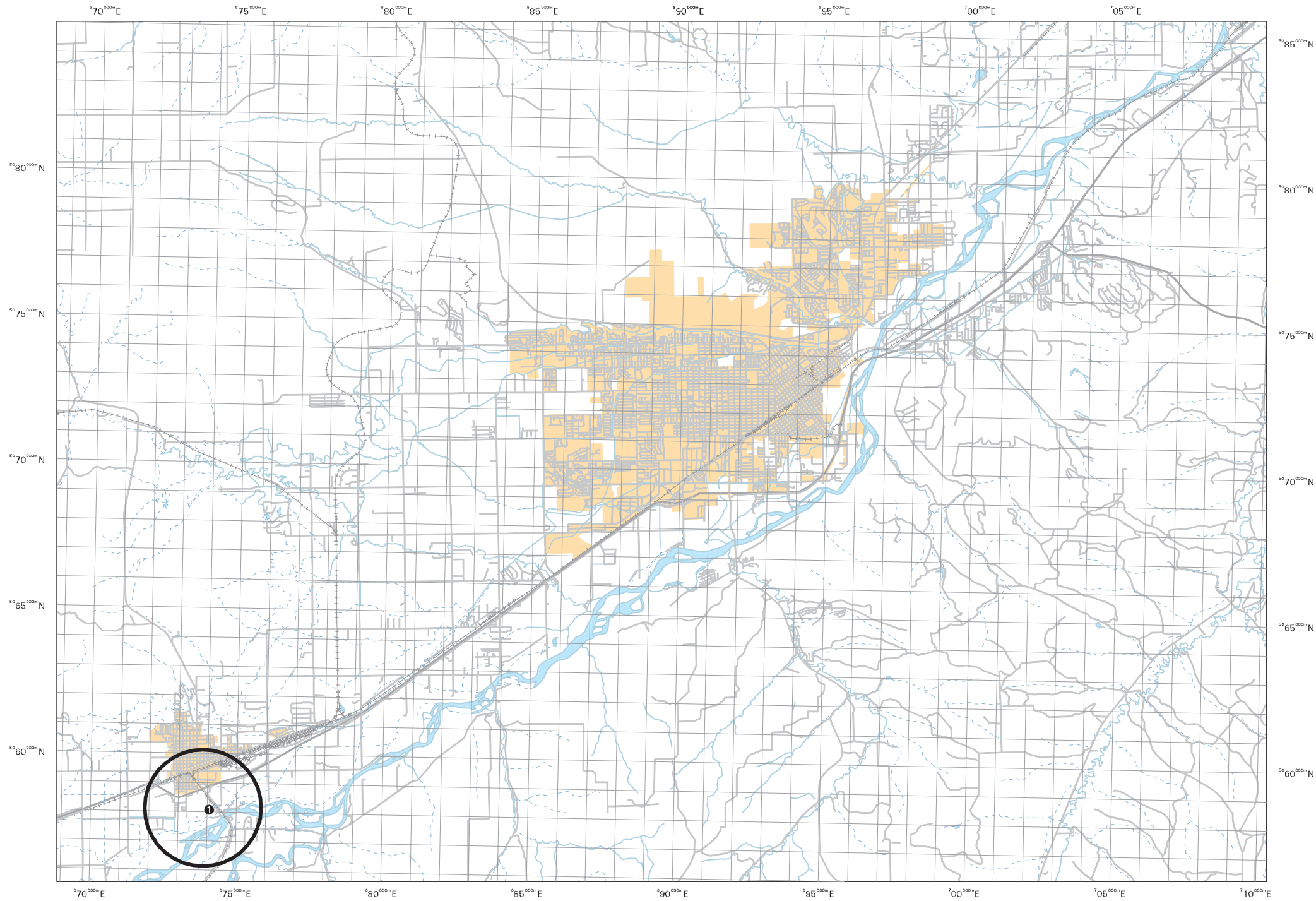
YELLOWSTONE COUNTY

Laurel Sulfur Dioxide Nonattainment Area

LAUREL SO₂ Nonattainment Area:^{*}
The portion of Laurel and vicinity located within a 2.0 kilometer radius centered on Tank 61: (UTM point coordinate 673852mE; 5058129mN) at the Laurel Cenex petroleum refinery.

^{*} Boundary as described in the Billings/Laurel SO₂ SIP page 56.6.1 (1).

① Laurel Farm SO₂ SPM monitoring site.
Years of Record 1987 to present.
AIRS number 30-111-0016, UTM location Zone 12, 674070mE; 5058075mN.

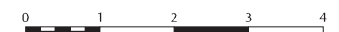


LEGEND

- Designated Sulfur Dioxide Nonattainment Area Boundary
- Improved Road
- Interstate Highway
- Trail
- Railroad
- River
- Stream
- UTM Grid
- Municipal Area
- Water Body

NRRS does not guarantee the data for functionality, accuracy, or being free from errors. The user assumes responsibility to verify usability for their purposes.

Background data from TIGER files and BLM PLSS or UTM grid generated in Arc/Info.



Scale of Miles



Scale of Kilometers

