

PRELIMINARY DETERMINATION
ON PERMIT APPLICATION MAQP #5328-00

Date of Posting: January 15, 2025

Name of Applicant: Crusoe Energy Systems, Inc. – Breaks CDP Facility

Source: Natural Gas Fired Generator

Location: Section 2, Township 25 North, Range 57 East

Proposed Action: The Montana Department of Environmental Quality (DEQ) proposes to issue a permit, with conditions, to the above-named applicant. The application was assigned Montana Air Quality Permit (MAQP) Application Number 5328-00.

Proposed Conditions: See attached Preliminary Determination of MAQP #5328-00.

Public Comment: Any member of the public desiring to comment must submit comments to DEQ-ARMB-Admin@mt.gov or to the address below. Comments may address DEQ's analysis and Preliminary Determination, Draft Environmental Assessment, or the information submitted in the application. All comments are due by January 30, 2025. Copies of the application and DEQ's analysis may be requested at <https://deq.mt.gov> (at the bottom of the home page, select *Request Public Records*). For more information, you may contact DEQ at (406) 444-3490, or DEQ-ARMB-Admin@mt.gov.

Departmental Action: DEQ intends to make a Decision on the application following the Public Comment period. A copy of the Decision will be available on DEQ's website, <https://deq.mt.gov/public/publicnotice> (select *AIR*). The permit shall become final on the date stated in the Decision, unless the Board of Environmental Review (Board) orders a stay on the permit.

Procedures for Appeal: Any person who is directly and adversely affected by DEQ's Decision may request a hearing before the Board. The appeal must be filed by the date that will be stated in the Decision. The request for a hearing must contain an affidavit setting forth the grounds for the request. The hearing will be held under the provisions of the Montana Administrative Procedures Act. Submit requests for a hearing to: Chairman, Board of Environmental Review, P.O. Box 200901, Helena, MT 59620, or the Board Secretary: DEQBERSecretary@mt.gov.

For DEQ,



Eric Merchant
Permitting Services Section Supervisor
Air Quality Bureau
(406) 444-3626



John P. Proulx
Air Quality Engineer
Air Quality Bureau
(406) 444-5391

MONTANA AIR QUALITY PERMIT

Issued To: Crusoe Energy Systems Inc.
Breaks CDP Facility
1660 17th Street, Suite 350
Denver, CO 80202

MAQP: #5328-00
Application Complete: 12/30/2024
Preliminary Determination Issued: 01/15/2025
Department's Decision Issued:
Permit Final:

A Montana Air Quality Permit (MAQP), with conditions, is hereby granted to Crusoe Energy Systems, Inc. (Crusoe) for the Breaks CDP Facility, pursuant to Sections 75-2-204 and 211 of the Montana Code Annotated (MCA), as amended, and Administrative Rules of Montana (ARM) 17.8.740, *et seq.*, as amended, for the following:

Section I: Permitted Facilities

A. Permitted Equipment

Crusoe proposes to install and operate up to ten (10) Waukesha 9394 GSI engines (or equivalent) each rated at 2,500 brake horsepower (hp) or less.

The engines would be used to generate electricity through the combustion of field gas that would otherwise be flared from existing oil and gas infrastructure. Each engine utilizes an air to fuel ratio controller (AFR) and Non-Selective Catalytic Reduction (NSCR) to reduce emissions.

B. Plant Location

This facility is to be located approximately 14.5 miles northwest of Fairview, Montana, in Section 2, Township 25 North, Range 57 East, in Richland County, 47.95329°N, latitude and -104.32595°W, longitude.

Section II: Conditions and Limitations

A. Emission Limitations

1. The combined maximum rated brake horsepower (bhp) of the engine(s) shall not exceed 25,000 bhp (ARM 17.8.749).
2. Emissions from each individual engine, rated up to but no more than 2,500 hp, at the Breaks CDP Facility site shall not exceed the following (ARM 17.8.749 and ARM 17.8.752):

PM, PM₁₀, PM_{2.5} – 0.06 lb/hr or 0.01 grams per brake horsepower (g/bhp-hr)
NO_x – 0.83 lb/hr or 0.15 g/bhp-hr
CO – 1.65 lb/hr or 0.30 g/bhp-hr
VOC – 0.17 lb/hr or 0.03 g/bhp-hr
SO₂ – 0.012 lb/hr

3. Crusoe shall operate and maintain a NSCR unit and an AFR controller on each individual engine within the parameters recommended by the equipment manufacturer (ARM 17.8.752).
4. Crusoe shall not cause or authorize emissions to be discharged into the outdoor atmosphere from any sources installed after November 23, 1968, that exhibit an opacity of 20% or greater averaged over 6 consecutive minutes (ARM 17.8.304).
5. Crusoe shall not cause or authorize the use of any street, road, or parking lot without taking reasonable precautions to control emissions of airborne particulate matter (ARM 17.8.308).
6. Crusoe shall treat all unpaved portions of the haul roads, access roads, parking lots, or general plant area with water and/or chemical dust suppressant as necessary to maintain compliance with the reasonable precaution limitation in Section II.A.5 (ARM 17.8.749).
7. Crusoe shall comply with all applicable standards and limitations, and the reporting, recordkeeping and notification requirements contained in Title 40 Code of Federal Regulations (CFR) 60, Subpart A, Subpart JJJJ, ARM 17.8.340 and 40 CFR 60, Subpart(s) A and JJJJ).
8. Crusoe shall comply with all applicable standards and limitations, and the reporting, recordkeeping and notification requirements contained in 40 CFR 63, Subpart A, Subpart ZZZZ (ARM 17.8.340 and 40 CFR 63, Subpart(s) A and ZZZZ).

B. Testing Requirements

1. Crusoe shall demonstrate compliance with the NO_x, CO, and VOC limits in Section II.A.2 via source testing within 180 days after equipment commencement of operation. Source testing shall be conducted for NO_x, CO, and VOCs simultaneously. Compliance test results are determined by the average of three 1-hour or longer runs. Results shall be submitted to DEQ to demonstrate compliance with the emission limitations in Section II.A.2 (ARM 17.8.105 and ARM 17.8.749).
2. Following the calendar date of the initial compliance demonstration, compliance with the applicable emission limits shall be demonstrated via source testing for NO_x, CO, and VOCs simultaneously within 8,760 operating hours or 3 years, whichever comes first. Source testing shall follow the applicable methods defined in 40 CFR 60 Subpart JJJJ, or equivalent methods as approved in writing by DEQ.

Future compliance demonstrations shall be required at the same frequency for each engine on site from the date of the last compliance demonstration (ARM 17.8.105, ARM 17.8.749, ARM 17.8.340, 40 CFR 60 Subpart JJJJ, and 40 CFR 60 Subpart KKKK).

3. All compliance source tests shall conform to the requirements of the Montana Source Test Protocol and Procedures Manual (ARM 17.8.106).
4. DEQ may require further testing (ARM 17.8.105).

C. Operational Reporting Requirements

1. Crusoe shall supply DEQ with annual production information for all emission points, as required by DEQ in the annual emission inventory request. The request will include, but is not limited to, all sources of emissions identified in the emission inventory contained in the permit analysis.

Production information shall be gathered on a calendar-year basis and submitted to DEQ by the date required in the emission inventory request. Information shall be in the units required by DEQ. This information may be used to calculate operating fees, based on actual emissions from the facility, and/or to verify compliance with permit limitations (ARM 17.8.505). Crusoe shall submit the following information annually to DEQ by March 1 of each year; the information may be submitted along with the annual emission inventory (ARM 17.8.505).

a. annual production

2. Crusoe shall notify DEQ of any construction or improvement project conducted, pursuant to ARM 17.8.745, that would include ***the addition of a new emissions unit***, change in control equipment, stack height, stack diameter, stack flow, stack gas temperature, source location, or fuel specifications, or would result in an increase in source capacity above its permitted operation (ARM 17.8.745).

The notice must be submitted to DEQ, in writing, 10 days prior to startup or use of the proposed de minimis change, or as soon as reasonably practicable in the event of an unanticipated circumstance causing the de minimis change and must include the information requested in ARM 17.8.745(l)(d) (ARM 17.8.745).

3. All records compiled in accordance with this permit must be maintained by Crusoe as a permanent business record for at least 5 years following the date of the measurement, must be available at the plant site for inspection by DEQ, and must be submitted to DEQ upon request. These records may be stored at a location other than the plant site upon approval by DEQ (ARM 17.8.749).
4. Crusoe shall annually certify that the Breaks CDP Facility Site emissions are less than those that would require the source to obtain an air quality operating permit as required by ARM 17.8.1204(3)(b). The annual certification shall comply with the certification requirements of ARM 17.8.1207.

The annual certification shall be submitted along with the annual emissions inventory information (ARM 17.8.749 and ARM 17.8.1204).

D. Notification

1. Crusoe shall notify DEQ in writing of the date of commencement of operation of the engines within 30-days following the date of commencement and confirm the horsepower (bhp) rating for each individual engine and the total horsepower of all engines placed into service (ARM 17.8.749).

SECTION III: General Conditions

- A. Inspection – Crusoe shall allow DEQ’s representatives access to the source at all reasonable times for the purpose of making inspections or surveys, collecting samples, obtaining data, auditing any monitoring equipment such as Continuous Emission Monitoring Systems (CEMS) or Continuous Emission Rate Monitoring Systems (CERMS), or observing any monitoring or testing, and otherwise conducting all necessary functions related to this permit.
- B. Waiver – The permit and the terms, conditions, and matters stated herein shall be deemed accepted if Crusoe fails to appeal as indicated below.
- C. Compliance with Statutes and Regulations – Nothing in this permit shall be construed as relieving Crusoe of the responsibility for complying with any applicable federal or Montana statute, rule, or standard, except as specifically provided in ARM 17.8.740, *et seq.* (ARM 17.8.756).
- D. Enforcement – Violations of limitations, conditions and requirements contained herein may constitute grounds for permit revocation, penalties, or other enforcement action as specified in Section 75-2-401, *et seq.*, MCA.
- E. Appeals – Any person or persons jointly or severally adversely affected by DEQ’s decision may request, within 15 days after DEQ renders its decision, upon affidavit setting forth the grounds therefor, a hearing before the Board of Environmental Review (Board). A hearing shall be held under the provisions of the Montana Administrative Procedures Act. The filing of a request for a hearing does not stay DEQ’s decision, unless the Board issues a stay upon receipt of a petition and a finding that a stay is appropriate under Section 75-2-211(11)(b), MCA. The issuance of a stay on a permit by the Board postpones the effective date of DEQ’s decision until conclusion of the hearing and issuance of a final decision by the Board. If a stay is not issued by the Board, DEQ’s decision on the application is final 16 days after DEQ’s decision is made.
- F. Permit Inspection – As required by ARM 17.8.755, Inspection of Permit, a copy of the air quality permit shall be made available for inspection by DEQ at the location of the source.
- G. Permit Fee – Pursuant to Section 75-2-220, MCA, failure to pay the annual operation fee by Crusoe may be grounds for revocation of this permit, as required by that section and rules adopted thereunder by the Board.

- H. Duration of Permit – Construction or installation must begin or contractual obligations entered into that would constitute substantial loss within 3 years of permit issuance and proceed with due diligence until the project is complete or the permit shall expire (ARM 17.8.762).

Montana Air Quality Permit (MAQP) Analysis
Crusoe Energy Systems, Inc. – Breaks CDP Facility
MAQP #5328-00

I. Introduction/Process Description

Crusoe Energy Systems, Inc. (Crusoe) owns and operates multiple Waukesha engines at the Breaks CDP Facility. This facility is to be located approximately 14.5 miles northwest of Fairview, Montana, in Section 2, Township 25 North, Range 57 East, in Richland County, 47.95329°N, latitude and -104.32595°W, longitude.

A. Permitted Equipment

Crusoe proposes to install up to ten (10) 2,500 brake horsepower (bhp) Waukesha 9394 GSI generator engines at the Breaks CDP Facility Site.

B. Source Description

The engines will utilize field gas that would otherwise be sent to a process flare for combustion. The generator engines would produce electricity to power local data centers.

C. Response to Public Comments

Person/Group Commenting	Permit Reference	Comment	DEQ Response

D. Additional Information

Additional information, such as applicable rules and regulations, Best Available Control Technology (BACT)/Reasonably Available Control Technology (RACT) determinations, air quality impacts, and environmental assessments, is included in the analysis associated with each change to the permit.

II. Applicable Rules and Regulations

The following are partial explanations of some applicable rules and regulations that apply to the facility. The complete rules are stated in the Administrative Rules of Montana (ARM) and are available, upon request, from the Department of Environmental Quality (DEQ). Upon request, DEQ will provide references for the location of complete copies of all applicable rules and regulations or copies where appropriate.

A. ARM 17.8, Subchapter 1 – General Provisions, including but not limited to:

1. ARM 17.8.101 Definitions. This rule includes a list of applicable definitions used in this chapter, unless indicated otherwise in a specific subchapter.

2. ARM 17.8.105 Testing Requirements. Any person or persons responsible for the emission of any air contaminant into the outdoor atmosphere shall, upon written request of DEQ, provide the facilities and necessary equipment (including instruments and sensing devices) and shall conduct tests, emission or ambient, for such periods of time as may be necessary using methods approved by DEQ.
3. ARM 17.8.106 Source Testing Protocol. The requirements of this rule apply to any emission source testing conducted by DEQ, any source or other entity as required by any rule in this chapter, or any permit or order issued pursuant to this chapter, or the provisions of the Clean Air Act of Montana, 75-2-101, *et seq.*, Montana Code Annotated (MCA).

Crusoe shall comply with the requirements contained in the Montana Source Test Protocol and Procedures Manual, including, but not limited to, using the proper test methods and supplying the required reports. A copy of the Montana Source Test Protocol and Procedures Manual is available from DEQ upon request.

4. ARM 17.8.110 Malfunctions. (2) DEQ must be notified promptly by telephone whenever a malfunction occurs that can be expected to create emissions in excess of any applicable emission limitation or to continue for a period greater than 4 hours.
5. ARM 17.8.111 Circumvention. (1) No person shall cause or permit the installation or use of any device or any means that, without resulting in reduction of the total amount of air contaminant emitted, conceals or dilutes an emission of air contaminant that would otherwise violate an air pollution control regulation. (2) No equipment that may produce emissions shall be operated or maintained in such a manner as to create a public nuisance.

B. ARM 17.8, Subchapter 2 – Ambient Air Quality, including, but not limited to the following:

1. ARM 17.8.204 Ambient Air Monitoring
2. ARM 17.8.210 Ambient Air Quality Standards for Sulfur Dioxide
3. ARM 17.8.211 Ambient Air Quality Standards for Nitrogen Dioxide
4. ARM 17.8.212 Ambient Air Quality Standards for Carbon Monoxide
5. ARM 17.8.213 Ambient Air Quality Standard for Ozone
6. ARM 17.8.214 Ambient Air Quality Standard for Hydrogen Sulfide
7. ARM 17.8.220 Ambient Air Quality Standard for Settled Particulate Matter
8. ARM 17.8.221 Ambient Air Quality Standard for Visibility
9. ARM 17.8.222 Ambient Air Quality Standard for Lead
10. ARM 17.8.223 Ambient Air Quality Standard for PM₁₀
11. ARM 17.8.230 Fluoride in Forage

Crusoe must maintain compliance with the applicable ambient air quality standards.

C. ARM 17.8, Subchapter 3 – Emission Standards, including, but not limited to:

1. ARM 17.8.304 Visible Air Contaminants. This rule requires that no person may cause or authorize emissions to be discharged into the outdoor atmosphere from any source installed after November 23, 1968, that exhibit an opacity of 20% or greater averaged over 6 consecutive minutes.
2. ARM 17.8.308 Particulate Matter, Airborne. (1) This rule requires an opacity limitation of less than 20% for all fugitive emission sources and that reasonable precautions be taken to control emissions of airborne particulate matter. (2) Under this rule, Crusoe shall not cause or authorize the use of any street, road, or parking lot without taking reasonable precautions to control emissions of airborne particulate matter.
3. ARM 17.8.309 Particulate Matter, Fuel Burning Equipment. This rule requires that no person shall cause, allow, or permit to be discharged into the atmosphere particulate matter caused by the combustion of fuel in excess of the amount determined by this rule.
4. ARM 17.8.310 Particulate Matter, Industrial Process. This rule requires that no person shall cause, allow, or permit to be discharged into the atmosphere particulate matter in excess of the amount set forth in this rule.
5. ARM 17.8.316 Incinerators. This rule requires that no person may cause or authorize emissions to be discharged into the outdoor atmosphere from any incinerator, particulate matter in excess of 0.10 grains per standard cubic foot of dry flue gas, adjusted to 12% carbon dioxide and calculated as if no auxiliary fuel had been used. Further, no person shall cause or authorize to be discharged into the outdoor atmosphere from any incinerator emissions that exhibit an opacity of 10% or greater averaged over 6 consecutive minutes.
6. ARM 17.8.322 Sulfur Oxide Emissions--Sulfur in Fuel. This rule requires that no person shall burn liquid, solid, or gaseous fuel in excess of the amount set forth in this rule.
7. ARM 17.8.324 Hydrocarbon Emissions--Petroleum Products. (3) No person shall load or permit the loading of gasoline into any stationary tank with a capacity of 250 gallons or more from any tank truck or trailer, except through a permanent submerged fill pipe, unless such tank is equipped with a vapor loss control device as described in (1) of this rule.
8. ARM 17.8.340 Standard of Performance for New Stationary Sources and Emission Guidelines for Existing Sources. This rule incorporates, by reference, 40 CFR Part 60, Standards of Performance for New Stationary Sources (NSPS). Crusoe is considered an NSPS affected facility under 40 CFR Part 60 and is subject to the requirements of the following subparts.
 - a. 40 CFR 60, Subpart A – General Provisions apply to all equipment or facilities subject to an NSPS Subpart as listed below:

2. ARM 17.8.743 Montana Air Quality Permits--When Required. This rule requires a person to obtain an air quality permit or permit modification to construct, modify, or use any air contaminant sources that have the potential to emit (PTE) greater than 25 tons per year of any pollutant. The Breaks CDP Facility has a PTE greater than 25 tons per year of oxides of nitrogen (NO_x) and carbon monoxide (CO); therefore, an air quality permit is required.
3. ARM 17.8.744 Montana Air Quality Permits--General Exclusions. This rule identifies the activities that are not subject to the Montana Air Quality Permit program.
4. ARM 17.8.745 Montana Air Quality Permits--Exclusion for De Minimis Changes. This rule identifies the de minimis changes at permitted facilities that do not require a permit under the Montana Air Quality Permit Program.
5. ARM 17.8.748 New or Modified Emitting Units--Permit Application Requirements.
(1) This rule requires that a permit application be submitted prior to installation, modification, or use of a source. Crusoe submitted the required permit application for the current permit action. (7) This rule requires that the applicant notify the public by means of legal publication in a newspaper of general circulation in the area affected by the application for a permit. Crusoe submitted an affidavit of publication of public notice for the *December 14, 2024*, issue of the *Sidney Herald*, a newspaper of general circulation in the Town of Sidney in Richland County, as proof of compliance with the public notice requirements.
6. ARM 17.8.749 Conditions for Issuance or Denial of Permit. This rule requires that the permits issued by DEQ must authorize the construction and operation of the facility or emitting unit subject to the conditions in the permit and the requirements of this subchapter. This rule also requires that the permit must contain any conditions necessary to assure compliance with the Federal Clean Air Act (FCAA), the Clean Air Act of Montana, and rules adopted under those acts.
7. ARM 17.8.752 Emission Control Requirements. This rule requires a source to install the maximum air pollution control capability that is technically practicable and economically feasible, except that BACT shall be utilized. The required BACT analysis is included in Section III of this permit analysis.
8. ARM 17.8.755 Inspection of Permit. This rule requires that air quality permits shall be made available for inspection by DEQ at the location of the source.
9. ARM 17.8.756 Compliance with Other Requirements. This rule states that nothing in the permit shall be construed as relieving Crusoe of the responsibility for complying with any applicable federal or Montana statute, rule, or standard, except as specifically provided in ARM 17.8.740, *et seq.*
10. ARM 17.8.759 Review of Permit Applications. This rule describes DEQ's responsibilities for processing permit applications and making permit decisions on those permit applications that do not require the preparation of an environmental impact statement.

11. ARM 17.8.760 Additional Review of Permit Applications. This rule describes DEQ's responsibilities for processing permit applications and making permit decisions on those applications that require an environmental impact statement.
 12. ARM 17.8.762 Duration of Permit. An air quality permit shall be valid until revoked or modified, as provided in this subchapter, except that a permit issued prior to construction of a new or modified source may contain a condition providing that the permit will expire unless construction is commenced within the time specified in the permit, which in no event may be less than 1 year after the permit is issued.
 13. ARM 17.8.763 Revocation of Permit. An air quality permit may be revoked upon written request of the permittee, or for violations of any requirement of the Clean Air Act of Montana, rules adopted under the Clean Air Act of Montana, the FCAA, rules adopted under the FCAA, or any applicable requirement contained in the Montana State Implementation Plan (SIP).
 14. ARM 17.8.764 Administrative Amendment to Permit. An air quality permit may be amended for changes in any applicable rules and standards adopted by the Board of Environmental Review (Board) or changed conditions of operation at a source or stack that do not result in an increase of emissions as a result of those changed conditions. The owner or operator of a facility may not increase the facility's emissions beyond permit limits unless the increase meets the criteria in ARM 17.8.745 for a de minimis change not requiring a permit, or unless the owner or operator applies for and receives another permit in accordance with ARM 17.8.748, ARM 17.8.749, ARM 17.8.752, ARM 17.8.755, and ARM 17.8.756, and with all applicable requirements in ARM Title 17, Chapter 8, Subchapters 8, 9, and 10.
 15. ARM 17.8.765 Transfer of Permit. This rule states that an air quality permit may be transferred from one person to another if written notice of intent to transfer, including the names of the transferor and the transferee, is sent to DEQ.
 16. ARM 17.8.770 Additional Requirements for Incinerators. This rule specifies the additional information that must be submitted to DEQ for incineration facilities subject to 75-2-215, Montana Code Annotated (MCA).
- F. ARM 17.8, Subchapter 8 – Prevention of Significant Deterioration of Air Quality, including, but not limited to:
1. ARM 17.8.801 Definitions. This rule is a list of applicable definitions used in this subchapter.
 2. ARM 17.8.818 Review of Major Stationary Sources and Major Modifications--Source Applicability and Exemptions. The requirements contained in ARM 17.8.819 through ARM 17.8.827 shall apply to any major stationary source and any major modification, with respect to each pollutant subject to regulation under the FCAA that it would emit, except as this subchapter would otherwise allow.

This facility is not a major stationary source because this facility is not a listed source and the facility's PTE is below 250 tons per year of any conventional pollutant.

G. ARM 17.8, Subchapter 12 – Operating Permit Program Applicability, including, but not limited to:

1. ARM 17.8.1201 Definitions. (23) Major Source under Section 7412 of the FCAA is defined as any source having:
 - a. PTE > 100 tons/year of any pollutant;
 - b. PTE > 10 tons/year of any one hazardous air pollutant (HAP), PTE > 25 tons/year of a combination of all HAPs, or lesser quantity as DEQ may establish by rule; or
 - c. PTE > 70 tons/year of particulate matter with an aerodynamic diameter of 10 microns or less (PM₁₀) in a serious PM₁₀ nonattainment area.
2. ARM 17.8.1204 Air Quality Operating Permit Program. (1) Title V of the FCAA amendments of 1990 requires that all sources, as defined in ARM 17.8.1204(1), obtain a Title V Operating Permit. In reviewing and issuing MAQP #5328-00 for Crusoe, the following conclusions were made:
 - a. The facility's PTE is less than 100 tons/year for any pollutant.
 - b. The facility's PTE is less than 10 tons/year for any one HAP and less than 25 tons/year for all HAPs.
 - c. This source is not located in a serious PM₁₀ nonattainment area.
 - d. This facility is subject to current NSPS; 40 CFR 60, Subpart A and JJJJ.
 - e. This facility is subject to current NESHAP; 40 CFR 63, Subpart A and ZZZZ.
 - f. This source is not a Title IV affected source, or a solid waste combustion unit.
 - g. This source is not an EPA designated Title V source.

Based on these facts, DEQ determined that Crusoe will be a minor source of emissions as defined under Title V. However, if minor sources subject to NSPS are required to obtain a Title V Operating Permit, Crusoe will be required to obtain a Title V Operating Permit.

III. BACT Determination

A BACT determination is required for each new or modified source. Crusoe shall install on the new or modified source the maximum air pollution control capability, which is technically practicable and economically feasible, except that BACT shall be utilized.

Crusoe proposes to install and operate up to ten (10) Waukesha 9394 GSI engines (or equivalent) each rated at 2,500 brake horsepower (hp) or less.

A BACT analysis was submitted by Crusoe in permit application for MAQP #5328-00 addressing some available methods of controlling pollutant emissions from the Breaks CDP Facility Site. An incompleteness letter was sent to Crusoe on September 24, 2024, due to a conflict with the information submitted regarding the VOC BACT limit, and for missing information related to SO₂ and PM BACT information. The following control options have been reviewed by DEQ to make the BACT determination,

NO_x Emissions

Identify all Available Control Technologies

The following options were reviewed for NO_x control.

- Water/steam injection
- Dry low NO_x combustion
- Selective catalytic reduction (SCR)
- Selective non-catalytic reduction (SNCR)
- Non-selective catalytic reduction (NSCR)
- Oxidation catalyst
- EM_x catalyst system

Eliminate Technically Infeasible Options

Both water/steam injection and dry low NO_x combustion are technologies that would require modifications to the proposed engines. Therefore, these technologies are deemed technically infeasible for the proposed engines.

SCR and SNCR require specific exhaust temperatures for optimal destruction and the exhaust temperatures for the proposed engines are not within the required range for either SCR or SNCR. Because the exhaust temperature from the proposed engines would be below the recommended ranges these technologies are deemed technically infeasible for the proposed engines.

Oxidation catalyst is best suited for lean burn engines and therefore is also eliminated from consideration due to the proposed Waukesha engines being four-stroke rich-burn (4SRB).

Rank and Evaluate the Remaining Control Technologies

The two remaining identified technologies include NSCR and EM_x catalyst. Each of these technologies are considered technically feasible for the proposed engines. EM_x is able to operate at the exhaust temperature produced by the proposed engines, but the costs associated with EM_x are more than the costs associated with a non-selective catalyst.

Select the BACT

The NSCR is estimated to provide up to 90 percent emission reduction. Therefore, NSCR with air fuel ratio controller (AFR) is selected as BACT for NO_x for the proposed engines.

VOC and CO Emissions

Identify all Available Control Technologies

The following options were reviewed for VOC and CO control.

- EMx
- NSCR with an AFR Controller

VOC and CO emissions primarily occur as the result of incomplete combustion. Similar to NO_x control, catalysts that react with CO and VOC's can be used to convert these pollutants to CO₂. Therefore, EMx and NSCR constitute available control technologies for the proposed engines.

Eliminate Technically Infeasible Options

Both EMx and NSCR with an AFR controller are technically feasible for the control of VOC and CO emissions from the proposed engines. Because these technologies are the same control technology analyzed for the control of NO_x, these control technologies are applied for the control of VOC and CO from the proposed engines.

Rank and Evaluate the Remaining Control Technologies

Because NSCR with an AFR controller is deemed BACT for NO_x, and this technology is also capable of co-benefit control of VOC and CO emissions, EMx will not be considered further.

Finding the optimum point in a slightly rich environment can produce very high destruction efficiencies for both CO, VOCs, and NO_x at the same time. Just as for NO_x, the use of an AFR is necessary to control the concentration in a slightly rich environment.

Select the BACT

Therefore, employing NSCR with an AFR controller, which uses a 3-way catalyst to treat CO, VOC's and NO_x, is deemed BACT for the proposed engines.

SO₂ and PM Species

The following options were reviewed for SO₂ and PM species.

Because of the nature and composition of field gas, annual SO₂ emissions from the proposed operations are estimated at only 0.02 tons per year therefore, any add-on SO₂ control would be cost-prohibitive and deemed economically infeasible for the proposed project on a cost per ton of SO₂ removed basis. Therefore, a top-down BACT analysis is not presented. The proposed SO₂ BACT is the combustion of low sulfur field gas with no add-on controls. The proposed SO₂ BACT conforms to previous BACT determinations made by DEQ for similar engines.

ARM 17.8.752 requires a BACT analysis for PM, PM₁₀ and PM_{2.5} emissions. Because of the nature and composition of field gas, annual PM emissions are predicted to be very low (see Section IV, Emission Inventory); therefore, any add-on control would be cost-prohibitive and deemed economically infeasible for the proposed project on a cost per ton of PM removed basis. Therefore, a top-down BACT analysis for PM emissions is not presented. The proposed PM BACT is combustion of low sulfur field gas with no add-on controls. The proposed PM BACT conforms to previous BACT determinations made by DEQ for similar engines.

The proposed engines operating with NSCR and an AFR controller are capable of achieving the following emission rates. Therefore, pollutant-specific BACT limits for the proposed engines are as follows:

Proposed BACT Limits:

$PM_{TOT} - 0.01$ grams per brake horsepower-hour (g/bhp-hr)
 $PM_{10} - 0.01$ g/bhp-hr
 $PM_{2.5} - 0.01$ g/bhp-hr
 $NO_X - 0.15$ g/bhp-hr
 $CO - 0.30$ g/bhp-hr
 $VOC - 0.03$ g/bhp-hr
 $SO_X - 5.88 \times 10^{-04}$ pounds per million btu (lb/MMBtu)

Or

$PM_{TOT} - 0.06$ pounds per hour (lb/hr)
 $PM_{10} - 0.06$ lb/hr
 $PM_{2.5} - 0.06$ lb/hr
 $NO_X - 0.83$ lb/hr
 $CO - 1.65$ lb/hr
 $VOC - 0.17$ lb/hr
 $SO_X - 0.012$ lb/hr

The control options selected have controls and control costs comparable to other recently permitted similar sources and are capable of achieving the appropriate emission standards.

IV. Emission Inventory

CONTROLLED Emission Source	tons/year						
	PM	PM₁₀	PM_{2.5}	NO_X	CO	VOC	SO_X
2,500 bhp Compressor Engine (combined)	2.41	2.41	2.41	36.35	72.27	3.00	0.44
Total Emissions	2.41	2.41	2.41	36.35	72.27	3.00	0.44

Calculations

Waukesha Engine(s)

Note: Emissions are based on the power output of the engine.

Operational Capacity = 10 engines

10 engines

Pounds per ton

0.0005 ton/lb

Hours of Operation = 8,760.00 hr/yr

8760 hr/yr

PM Emissions:

Emission Factor = 2.41 ton/yr

2.41 ton/yr

PM-10 Emissions:

Emission Factor = 0.055 lb/hr

0.055 lb/hr

Calculation: ((10 engines) * (0.06 lb/hr) * (8,760 hr/yr) * (ton/2000 lb) = 2.4 ton/yr

2.41 ton/yr

PM2.5 Emissions

Emission Factor = 0.055 lb/hr

0.055 lb/hr

Calculation: ((10 engines) * (0.06 lb/hr) * (8,760 hr/yr) * (ton/2000 lb) = 2.4 ton/yr

2.41 ton/yr

NO_X Emissions:

Emission Factor = 0.83 lb/hr	0.83	lb/hr
Calculation: ((10 engines) * (0.83 lb/hr) * (8,760 hr/yr) *(ton/2000 lb) = 36.4 ton/yr	36.35	ton/yr
CO Emissions:		
Emission Factor = 1.65 lb/hr	1.65	lb/hr
Calculation: ((10 engines) * (1.65 lb/hr) * (8,760 hr/yr) *(ton/2000 lb) = 72.3 ton/yr	72.27	ton/yr
VOC Emissions:		
Emission Factor = 0.165 lb/hr	0.165	lb/hr
Calculation: ((10 engines) * (0.17 lb/hr) * (8,760 hr/yr) *(ton/2000 lb) = 3.0 ton/yr	3.00	ton/yr
SO _x Emissions:		
Emission Factor = 0.01 lb/hr	0.01	lb/hr
Calculation: ((10 engines) * (0.01 lb/hr) * (8,760 hr/yr) *(ton/2000 lb) = 0.4 ton/yr	0.44	ton/yr
HAPs Emissions		
Emission Factor = 0.24 lb/hr	0.24	lb/hr
Calculation: ((10 engines) * (0.24 lb/hr) * (8,760 hr/yr) *(ton/2000 lb) = 10.5 ton/yr	10.51	ton/yr

V. Existing Air Quality

Richland County is currently designated as attainment/unclassifiable for all pollutants.

VI. Ambient Air Impact Analysis

DEQ determined, based on amount of allowable emission, that the impacts from this permitting action will be minor. DEQ believes it will not cause or contribute to a violation of any ambient air quality standard.

VII. Taking or Damaging Implication Analysis

As required by 2-10-105, MCA, DEQ conducted a private property taking and damaging assessment. See section 21 of the attached Environmental Assessment (EA).

VIII. Environmental Assessment

An environmental assessment, required by the Montana Environmental Policy Act, was completed for this project. A copy is attached.



DRAFT ENVIRONMENTAL ASSESSMENT

Crusoe Energy Systems, Inc – Breaks CDP Facility

Air Quality Bureau

Air, Energy, and Mining Division

Table of Contents

Project Overview	3
Location	3
Compliance with the Montana Environmental Policy Act	3
Proposed Action	3
Purpose and Need	3
EVALUATION OF AFFECTED ENVIRONMENT AND IMPACT BY RESOURCE:	7
1. Geology and Soil Quality, Stability, and Moisture	8
2. Water Quality, Quantity, and Distribution	8
3. Air Quality	9
4. Vegetation Cover, Quantity, and Quality	11
5. Terrestrial, Avian, and Aquatic Life and Habitats	12
6. Unique, Endangered, Fragile, or Limited Environmental Resources	12
7. Historical and Archaeological Sites	13
8. Aesthetics	14
9. Demands on Environmental Resources of Land, Water, Air, or Energy	15
10. Impacts on Other Environmental Resources	15
11. Human Health and Safety	16
12. Industrial, Commercial, and Agricultural Activities and Production	17
13. Quantity and Distribution of Employment	18
14. Local and State Tax Base and Tax Revenues	18
15. Demand for Government Services	19
16. Locally Adopted Environmental Plans and Goals	19
17. Access to and Quality of Recreational and Wilderness Activities	20
18. Density and Distribution of Population and Housing	20
19. Social Structures and Mores	21
20. Cultural Uniqueness and Diversity	21
21. Private Property Impacts	22
22. Other Appropriate Social and Economic Circumstances	23
23. Other Appropriate Social and Economic Circumstances	23
24. Greenhouse Gas Assessment	24
PROPOSED ACTION ALTERNATIVES	25
CONSULTATION	25
PUBLIC INVOLVEMENT	26
OTHER GOVERNMENTAL AGENCIES WITH JURISDICTION	26
NEED FOR FURTHER ANALYSIS AND SIGNIFICANCE OF POTENTIAL IMPACTS	26
CONCLUSIONS AND FINDINGS	26

Project Overview

COMPANY NAME: Crusoe Energy Systems, Inc.
EA DATE: January 13, 2025
SITE NAME: Breaks CDP Facility
MAQP#: 5328-00
Application Received Date: December 13, 2024

Location

Township Section 2, Township 25 North, Range 57 East

County: Richland

PROPERTY OWNERSHIP: FEDERAL STATE PRIVATE ☒ X

Compliance with the Montana Environmental Policy Act

Under the Montana Environmental Policy Act (MEPA), Montana agencies are required to prepare an environmental review for state actions that may have an impact on the human environment. The proposed action is considered to be a state action that may have an impact on the human environment and, therefore, the Department of Environmental Quality (DEQ) must prepare an environmental review. This Environmental Assessment (EA) will examine the proposed action and alternatives to the proposed action and disclose potential impacts that may result from the proposed and alternative actions. DEQ will determine the need for additional environmental review based on consideration of the criteria set forth in Administrative Rules of Montana (ARM) 17.4.608. DEQ may not withhold, deny, or impose conditions on the Permit based on the information contained in this EA (§ 75-1-201(4), MCA).

Proposed Action

Crusoe proposes to install and operate up to ten (10) Waukesha 9394 GSI engines at the Breaks CDP Facility. The engines would be used to generate electricity through the combustion of gas that would otherwise be flared from an existing oil and gas facility. All engines combust gas from a nearby oil and gas facility, and each engine utilizes an air fuel ratio controller and a three-way catalyst to reduce emissions.

Purpose and Need

Under MEPA, Montana agencies are required to prepare an environmental review for state actions that may have an impact on the human environment. The Proposed Action is considered to be a state action that may have an impact on the human environment and, therefore, DEQ must prepare an environmental review. This EA will examine the proposed action and alternatives to the proposed action and disclose potential impacts that may result from the proposed and alternative actions. DEQ will determine the need for additional environmental review based on consideration of the criteria set forth in ARM 17.4.608.

TABLE 1: SUMMARY OF ACTIVITIES PROPOSED IN APPLICATION**Table 1. Summary of Proposed Activities in Application**

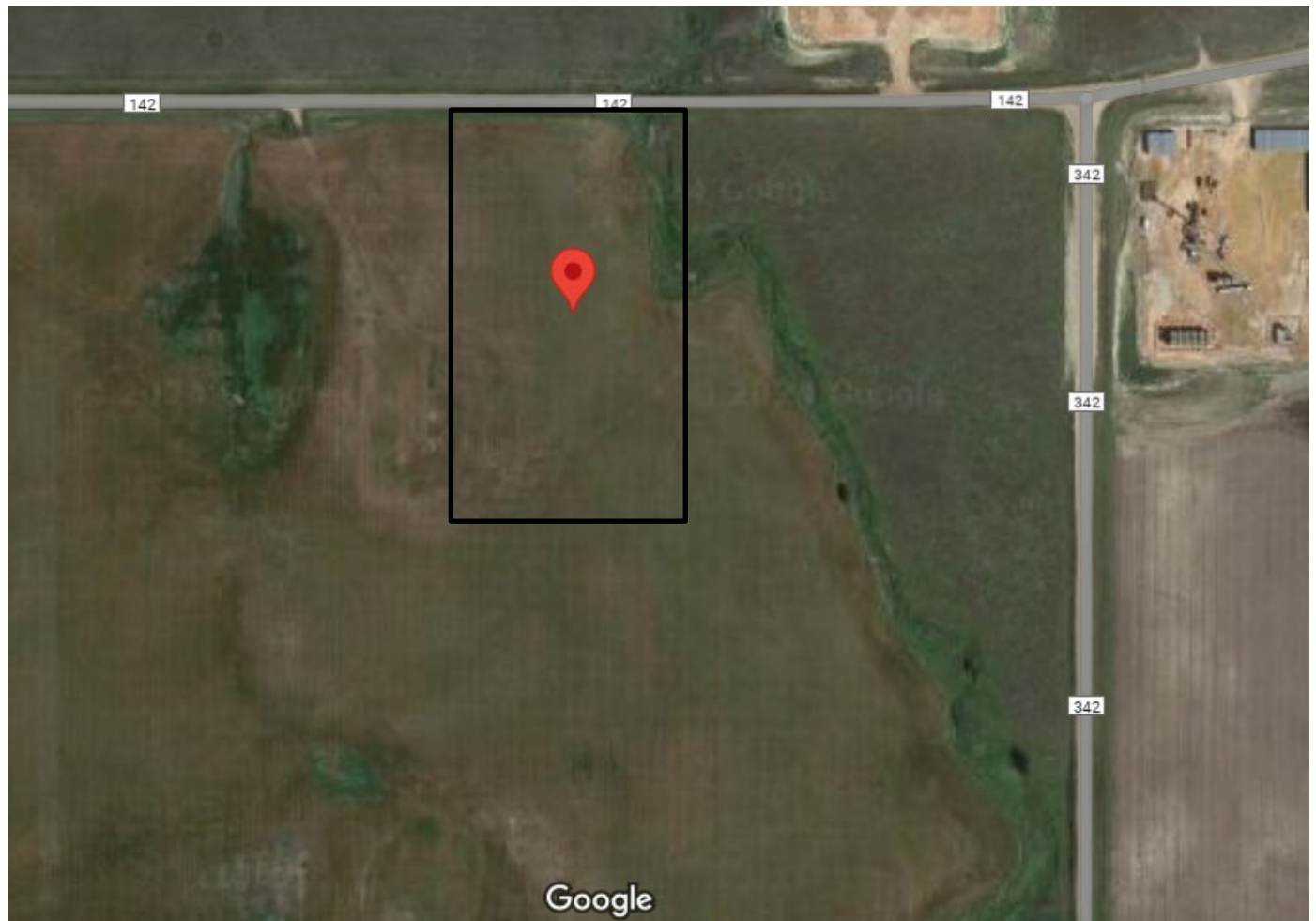
General Overview	The proposed action would allow the construction and operation of a facility to combust previously flared field gases by routing the gases to ten (10) engines to produce electricity. The electricity would be utilized by a small data center. The permit would authorize the use of up to ten (10) 2,500 hp engines.
Duration and Timing	Construction: The estimate for construction is that no more than one months time would be required to deliver and install the engines.
Estimated Disturbance	Operation: Operation of the facility would be expected to occur on a year-round continuous basis.
Equipment	Demobilization would be limited to removing the engines from the site, and removing the infrastructure powered by the electricity from the engines.
Location	The application has indicated that no new ground disturbance is needed for the construction as the property is currently already in oil and gas extraction. DEQ has assumed that a small amount of ground coverage would occur based on the physical size of the engines. Each engine is approximately 15 feet long by 7 feet wide and 9.5 feet tall. The engine sits on a framework platform. Total ground coverage would be less than 1000 ft ² .
Personnel on-site	Ten (10) 2,500 horsepower engines, capable of firing on field gas to produce electricity.
Location and Analysis Area	Section 2, Township 25 North, Range 57 East
Air Quality	County: Richland
Water Quality	Construction: Mobilization would be limited to setting the engines, piping the supply lines to the engines, and hooking up electrical connections. This would be expected to involve less than ten staff personnel.
Erosion Control and Sediment Transport	Operation: Existing company staff would oversee operation of the equipment on an as needed basis.
Solid Waste	The analysis area for this permit action is the area shown in Figure 1 and the immediate area surrounding the Breaks CDP Facility.

Cultural resources	<p>The property is already in use as agricultural property, and there would be no effects on cultural resources.</p> <p>The Applicant is required to comply with the applicable local, county, state, and federal requirements pertaining to cultural resources.</p>
Aesthetics	<p>The property is already in use as agricultural property, and there would be minor effects on aesthetics with the installation of up to ten (10) natural gas fired engines. The Applicant is required to comply with the applicable local, county, state, and federal requirements pertaining to aesthetics.</p>
Hazardous Substances	<p>This project does not contribute any hazardous substances to the facility. The Applicant is required to comply with the applicable local, county, state, and federal requirements pertaining to hazardous substances.</p>
Weed Control	<p>The Applicant is required to comply with the applicable local, county, state, and federal requirements pertaining to weed control.</p>
Reclamation Plans	<p>The property is already in use as agricultural property and would require minor reclamation at the end of the projects lifespan.</p>

Cumulative Impact Considerations	
Past Actions	This is a new site.
Present Actions	Install and operate up to ten (10) natural gas fired generator engines.
Related Future Actions	No future actions are foreseen at this site.

See Figure 1 below for the project location on the Breaks CDP Facility Site.

Figure 1. Approximate Location for the Generators



EVALUATION OF AFFECTED ENVIRONMENT AND IMPACT BY RESOURCE:

The impact analysis will identify and evaluate whether the impacts are direct or secondary impacts to the physical environment and human population in the area to be affected by the proposed project. Direct impacts occur at the same time and place as the action that causes the impact. Secondary impacts are a further impact to the human environment that may be stimulated, or induced by, or otherwise result from a direct impact of the action (ARM 17.4.603(18)). Where impacts would occur, the impacts will be described.

Cumulative impacts are the collective impacts on the human environment within the borders of Montana that could result from the Proposed Action when considered in conjunction with other past and present actions related to the Proposed Action by location and generic type. Related future impacts must also be considered when these actions are under concurrent consideration by any state agency through pre-impact statement studies, separate impact statement evaluation, or permit processing procedures. The activities identified in Table 1 were analyzed as part of the cumulative impacts assessment for each resource.

The duration is quantified as follows:

- Construction Impacts (short-term): These are impacts to the environment during the construction period. When analyzing duration, please include a specific range of time.
- Operation Impacts (long-term): These are impacts to the environment during the operational period. When analyzing duration, please include a specific range of time.

The intensity of the impacts is measured using the following:

- No impact: There would be no change from current conditions.
- Negligible: An adverse or beneficial effect would occur but would be at the lowest levels of detection.
- Minor: The effect would be noticeable but would be relatively small and would not affect the function or integrity of the resource.
- Moderate: The effect would be easily identifiable and would change the function or integrity of the resource.
- Major: The effect would alter the resource

1. Geology and Soil Quality, Stability, and Moisture

The affected area consists primarily of agricultural and grazing lands with nearby, dispersed oil and gas operations. Soils in the affected area are made up primarily of Zahill loams with a 15-60 percent slopes. Characteristics of this soil classification include distance to water table of more than 80 inches. There is no prime farmland. The engines would rest on the top of the ground and require minimal foundational support infrastructure with ground coverage of less than 750 ft².

Direct Impacts:

Construction of the proposed facility would require new land disturbance associated with groundwork and installation of permitted equipment requiring less than 1000 ft² of ground coverage. This disturbance would occur on private land previously disturbed by agricultural and grazing operations. No unique or important geological formations exist in the affected area and no impacts to bedrock would be expected from construction activities associated with the proposed project. Therefore, no impacts to geology would be expected.

The operation of heavy equipment necessary to construct the proposed facility would only last about one month and impact soil quality, stability and moisture in the small, affected area. However, because the proposed project is small by industrial standards (≤ 1000 ft²) and because the affected property constitutes previously disturbed land, any expected adverse direct impacts to soil quality, stability, and moisture from construction of the proposed facility would be short-term and minor. No beneficial direct impacts to soil quality, stability and moisture would be expected because of the proposed project.

Secondary Impacts:

Following construction of the proposed facility, no additional or new ground disturbing activities would occur. The proposed project would not be expected to cause or contribute to a violation of the applicable primary or secondary national ambient air quality standards (NAAQS). See permit analysis for more detailed information regarding air quality impacts. Secondary NAAQS provide public welfare protection, including protection against decreased visibility and damage to animals, crops, vegetation, and buildings. Therefore, any adverse secondary impacts to soil quality, stability and moisture would be long-term and minor. No beneficial secondary impacts would be expected because of the proposed project.

Cumulative Impacts:

Short-term cumulative impacts to soil stability, and moisture would be expected because Crusoe is installing and operating ten (10) new 2,500 bhp engines on the site, but it is already in an industrial area with oil and gas infrastructure near the location.

2. Water Quality, Quantity, and Distribution

This project would not impact any surface or groundwater in the area. The project is proposed on property that is already in use for oil and gas extraction, and properties surrounding this proposed site are covered with numerous oil and gas well sites.

Direct Impacts:

A limited amount of water may be required to control fugitive dust emissions from construction activities. Water used to control fugitive dust would likely be sourced off-site and transported to the affected site or sourced from local water resources. Further, due to the relatively small size and anticipated limited duration of the construction phase of the proposed project a relatively limited amount of water would be necessary. Therefore, any adverse direct impacts to water quantity would be short-term and negligible. Further, Crusoe would be required to use reasonable precautions to control fugitive dust resulting from construction activities. Therefore, fugitive dust generated during construction activities would not be expected to cause or contribute to a violation of the applicable NAAQS for particulate matter. Water would not be required for ongoing normal facility operations; therefore, no impacts to water distribution would be expected because of the proposed project.

Secondary Impacts:

Following construction of the proposed facility, no additional or new ground disturbing activities would occur. The ongoing use of unpaved roads to access the proposed facility would occur and would be expected to generate minimal fugitive dust as it is estimated the same personnel already in the area would perform necessary maintenance. However, Crusoe would be required to use reasonable precautions to control fugitive dust resulting from facility operations. Therefore, fugitive dust generated during operations would not be expected to cause or contribute to a violation of the applicable NAAQS for particulate matter. Operation of the permitted equipment would result in the emission of other regulated airborne pollutants. The proposed project would not be expected to cause or contribute to a violation of the applicable primary or secondary NAAQS. See permit analysis for more detailed information regarding air quality impacts. Secondary NAAQS provide public welfare protections, including protection against decreased visibility and damage to animals, crops, vegetation, and buildings. Any adverse direct impacts would be long-term and minor. No beneficial impacts would be expected because of the proposed action.

Cumulative Impacts:

No cumulative impacts are expected because of the proposed project.

3. Air Quality

Air quality in the area affected by the proposed project is currently unclassifiable or in compliance with applicable NAAQS. No significant point-sources of air pollution exist in the area affected by the proposed project. Existing sources of air pollution in the area are limited and generally include dispersed oil and gas facilities similar to the proposed project, fugitive dust associated with high wind events and exposed ground, vehicle travel on paved and unpaved roads (fugitive dust), vehicle exhaust emissions, and various agricultural practices (vehicle exhaust emissions and fugitive dust).

Applicants are required to comply with all laws relating to air, such as the Federal Clean Air Act, NAAQS set by the Environmental Protection Agency (EPA), and the Clean Air Act of Montana.

In addition, MAQP #5328-00 provides legally enforceable conditions regarding the emitting units themselves, pollution controls, and requires the applicant to take reasonable precautions to limit fugitive dust from this location.

Direct Impacts:

Fugitive dust emissions resulting from construction of the proposed facility may adversely impact air quality. However, Crusoe must use reasonable precautions to limit fugitive dust generated during normal facility operations. Further, no air quality restrictions exist for the affected area; therefore, the proposed project would not be expected to cause or contribute to a violation of the applicable NAAQS for particulate matter (fugitive dust). Therefore, any direct impacts would be short-term, negligible, consistent with existing impacts, and mitigated by implementation of enforceable reasonable precautions for dust.

Adverse air quality impacts would be minor because of the proposed project. See permit analysis for more information regarding air quality impacts. The majority of pollutants from the proposed project would be related to the combustion of field gases which are similar in composition to natural gas. This would result in the release of NO_x, CO, SO_x, VOCs, and particulate matter.

The proposed project would generate electricity to power a data center through the combustion of field gas gathered from multiple well pads that would otherwise be flared from an existing oil and gas facility, thereby eliminating or limiting emissions associated with flaring activities. Any beneficial impacts to air quality from eliminating or limiting the flaring of field gas would be long-term and minor.

The emission inventory is for up to ten (10) 2,500 horsepower engines operating up to 8,760 hours per year (unlimited operation). The emission inventory, located in Section IV of the MAQP Analysis, is based on emission factors provided by the manufacturer, and further based on EPA's AP-42 Emission factors and on limits proposed and approved as Best Available Control Technology (BACT).

Secondary Impacts:

Emissions from the proposed project would use BACT and would not be expected to cause or contribute to a violation of the health and welfare-based primary and secondary NAAQS. Secondary NAAQS provide public welfare protection, including protection against decreased visibility and damage to animals, crops, vegetation, and buildings. See permit analysis for more detailed information regarding air quality impacts. Any adverse impacts would be long-term and minor. No beneficial secondary impacts would be expected because of the proposed project.

Cumulative Impacts:

Cumulative impacts from the operation of the Breaks CDP Facility are restricted by conditions and limits contained in the MAQP; therefore, any expected air quality impacts would be minor. The Richland County area also has other stationary sources, many of which are similar power generators for data centers, and all contribute to the overall air quality in Richland County, Montana. The cumulative impacts of these other emitters

and the proposed action would not have an adverse impact to air quality. Impacts from the Proposed Action are limited by enforceable conditions and limits contained in the MAQP and BACT must be used. There are other oil and gas operations within the same township and range but none within the same section and none within a mile linear distance. These other sites contribute to the release of VOCs from venting directly to atmosphere, combustion in flares, and also combustion as would occur in these engines. Collectively the VOCs released directly to atmosphere and the combustion of gases release other criteria pollutants and GHGs. Because emissions from the proposed project, and all other similar or related projects located in the affected area are regulated, any adverse cumulative impacts to air quality would be short- and long-term and minor. Further, the proposed project would generate electricity to power a data center through the combustion of field gas gathered from multiple well pads that would otherwise be flared from an existing oil and gas facility, thereby eliminating or limiting emissions associated with flaring activities. Any beneficial cumulative impacts to air quality from eliminating or limiting the flaring of field gas would be long-term and minor.

4. Vegetation Cover, Quantity, and Quality

The affected area consists primarily of agricultural and grazing lands with nearby, dispersed oil and gas operations.

Direct Impacts:

Construction of the proposed facility would require new land disturbance associated with groundwork and installation of the proposed facility requiring less than 1000 ft² of ground coverage and one month of construction. During operations, 1000 ft² of land would be used for placement of the proposed equipment and thus no longer available as rangeland. Further, any plant species located within the 1000 ft² area may be eliminated or otherwise adversely impacted by construction activities. This disturbance would occur on private land previously disturbed by agricultural and grazing operations. Therefore, any adverse direct impacts from construction activities would be short- and long-term, limited by the small size of the affected site, consistent with existing impacts from prior agricultural and grazing disturbances, and minor. Emissions from the proposed project would not be expected to cause or contribute to a violation the secondary NAAQS. Secondary NAAQS provide public welfare protection, including protection against decreased visibility and damage to animals, crops, vegetation, and buildings. See permit analysis for more detailed information regarding air quality impacts. Therefore, any adverse direct impacts would be short- and long-term and minor. No beneficial direct impacts would be expected because of the proposed project. Therefore, any adverse direct impacts associated with a small footprint of 750 ft² would not be expected to displace any vegetation of special concern or threatened or endangered species.

Secondary Impacts:

Construction and operation of the proposed facility may result in the propagation of noxious weeds. Crusoe would be expected to manage and control noxious weeds in the affected area as required by the Richland County Weed Board. Therefore, any adverse secondary impacts would be long-term, mitigated by noxious weed control activities, and minor. No beneficial secondary impacts would be expected because of the proposed project.

Cumulative Impacts:

Minor cumulative impacts to vegetation cover, quantity, and quality are expected from this permitting action as it would require the construction and operation of up to ten (10) 2,500 bhp engines to generate electricity for a data center.

5. Terrestrial, Avian, and Aquatic Life and Habitats

The affected area consists primarily of agricultural and grazing lands with nearby, dispersed oil and gas operations. Wildlife species in the affected area include the species of concern identified in Section 6 below as well as various other plains species such as deer, raptors, and rodents. No water resources exist in the project area so no aquatic species would be expected to be present in the area.

Direct Impacts:

Construction of the proposed facility would require land disturbance associated with groundwork and installation of equipment requiring less than 1000 ft² of ground coverage and would last up to one month. This disturbance would occur on private land previously disturbed by agricultural and grazing operations. Therefore, any species identified in the MTNHP reports, as discussed in Section 6, that may be displaced by construction activities would likely relocate to nearby, similar habitats. Emissions from the proposed project would not be expected to cause or contribute to a violation of the secondary NAAQS. Secondary NAAQS provide public welfare protection, including protection against decreased visibility and damage to animals, crops, vegetation, and buildings. Any adverse direct impacts would be short-term, similar to existing impacts, and minor. No impacts to aquatic life and habitat are expected because of the proposed project, as there are no aquatic environments located within the project boundary. Further, the affected area includes other similar habitat nearby, and avian species are readily mobile, therefore, no direct impacts to avian life and habitat would be expected. No beneficial impacts would be expected because of the proposed project.

Secondary Impacts:

The affected area consists primarily of agricultural and grazing lands with nearby, dispersed oil and gas operations. Because the landscape surrounding the affected site is previously disturbed, any species displaced by facility operations would be expected to relocate to nearby similar, nearby habitats. Further, the proposed project would not be expected to violate the Secondary NAAQS, which provide public welfare protection, including protection against decreased visibility and damage to animals, crops, vegetation, and buildings. Any adverse secondary impacts would be long-term and minor. No beneficial secondary impacts would be expected because of the proposed project.

Cumulative Impacts:

No cumulative impacts would be expected to terrestrial, avian and aquatic life.

6. Unique, Endangered, Fragile, or Limited Environmental Resources

DEQ conducted a search using the Montana Natural Heritage Program (MTNHP) webpage with file downloads saved to the AQB project file. The query was run and downloaded on December 30, 2024. The polygon selected was the immediate area surrounding the proposed site.

The proposed project is not in core, general or connectivity sage grouse habitat, as designated by the Sage Grouse Habitat Conservation Program at:
<http://sagegrouse.mt.gov>.

Species of concern identified in the MTNHP report include the following:

Species of concern included: Whooping Crane.

Most of these species are outside of the analysis area but included in the MTNHP polygon area.

Direct Impacts:

The Sage Grouse Habitat Conservation Program has stated that the proposed project would not occur in core, general or connectivity sage grouse habitat. Therefore, impacts to sage grouse would not occur. Noted species of concern identified from the MTNHP report mostly indicate species related to surface water which is not present at the proposed site. Therefore, no direct impacts to the MTNHP identified *species of concern* would be expected because of the proposed project. Numerous other terrestrial and avian species such as deer, raptors, and rodents, may also use the affected area, including the project area, for all or part of their life cycle. However, because the project area is surrounded by similar habitats, any species displaced by construction and/or operation of the permitted facility would be expected to relocate to nearby, similar habitat. Any adverse direct impacts would be short-and long-term, consistent with existing impacts, and minor.

Secondary Impacts:

According to the MTNHP as stated above, there are some species of concern located or potentially located in the affected area. Operation of the proposed facility would require less than 750 ft² of ground coverage. Further, emissions from the proposed project would not be expected to cause or contribute to a violation of the health and welfare-based NAAQS. Secondary NAAQS provide public welfare protection, including protection against decreased visibility and damage to animals, crops, vegetation, and buildings. No secondary impacts would be expected to unique, endangered, fragile or other environmental resources.

Cumulative Impacts:

No cumulative impacts would be expected.

7. Historical and Archaeological Sites

The Montana State Historic Preservation Office (SHPO) was notified of the application and SHPO conducted a file search and provided a letter dated December 30, 2024.

This project is proposed on land that is currently in use for oil and gas extraction. The applicant has indicated that no new physical disturbance would occur with the proposed project, however DEQ has assumed that at a minimum at least 1000 ft² of ground will be covered by the ten (10) engines. There is one (1) record from SHPO related to Section 2, Township 25 North, Range 57 East.

Site Name	Twp	Rng	Sec	Qs	Site Type 1	Site Type 2	Time Period	Owner	NR Status
24RL0669	25N	57E	2	Comb	Historic Road		1950-1959	County	Ineligible

It is SHPO's position that any structure over fifty years of age is considered historic and is potentially eligible for listing on the National Register of Historic Places. If any structures are within the Area of Potential Effect, and are over fifty years old, SHPO recommends that they be recorded, and a determination of their eligibility be made prior to any disturbance taking place.

No underground disturbance would be required for the proposed action as the engines just sit on skids located on top of the ground surface.

Direct Impacts:

According to the SHPO, there has been one (1) previously recorded historical or archaeological site identified within the search area. The same rationale would apply here, as long as the land marker was undisturbed, no impact would occur. Therefore, no direct impacts from construction activities would be expected because of the proposed project.

Secondary Impacts:

According to the State Historical Preservation Society, there has been one previously recorded historical or archaeological site identified within the search area. Further, the proposed project would not be expected to violate the Secondary NAAQS. See air quality impacts analysis in the permit analysis. Secondary NAAQS provide public welfare protection, including protection against decreased visibility and damage to animals, crops, vegetation, and buildings, including historical buildings. Therefore, any direct impacts would be long-term and negligible. No beneficial direct impacts would be expected because of the proposed project.

Cumulative Impacts:

No cumulative impacts to historical and archaeological sites are anticipated since the proposed action site is located on land previously disturbed by agricultural and livestock grazing activities and adjacent to land currently used for oil and gas extraction. Further, there was a single site identified which would not be expected to be disturbed.

8. Aesthetics

The affected area consists primarily of agricultural and grazing lands with nearby, dispersed oil and gas operations.

Direct Impacts:

Construction of the proposed facility would require less than 1000 ft² of disturbance associated with groundwork and installation of the proposed action. This disturbance would occur on private land previously disturbed by agricultural and grazing operations. Therefore, any adverse direct impacts would be short-term, consistent with existing impacts, and negligible to minor. No beneficial direct impacts would be expected because of the proposed project.

Secondary Impacts:

The affected area consists primarily of agricultural and grazing lands with nearby, dispersed oil and gas operations. Emissions from the proposed project would not be expected to cause or contribute to a violation of the health and welfare-based NAAQS. Secondary NAAQS provide public welfare protection, including protection against decreased visibility and damage to animals, crops, vegetation, and buildings. Therefore, any adverse secondary impacts would be long-term, consistent with existing impacts in the affected area, and negligible to minor. No beneficial secondary impacts would be expected because of the proposed project.

Cumulative Impacts:

With this permitting action, negligible cumulative impacts on the aesthetics are anticipated as the site is small in industrial terms and is in close proximity to existing well-pads which also have equipment in place contributing to visual and auditory observations.

9. Demands on Environmental Resources of Land, Water, Air, or Energy

The proposed project is small by industrial standards and is located in an area primarily of agricultural and grazing lands with nearby, dispersed oil and gas operations. Fossil fuel use would be limited to the burning of field gas.

Direct Impacts:

Some direct impacts to land, water and air would be expected because of the proposed project, as identified by the corresponding impacts analyses above. Further, construction of the proposed facility would involve limited operation of heavy equipment and the combustion of fossil fuels would be required for the operation of such equipment. Any adverse direct impacts related to construction would be short-term and negligible. No beneficial direct impacts would be expected because of the proposed project.

Secondary Impacts:

Some secondary impacts to land, water and air would be expected because of the proposed project, as identified by the corresponding impacts analyses above. Further, the proposed project would generate electricity to power a data center through the combustion of field gas gathered from multiple well pads that would otherwise be flared from an existing oil and gas facility.

Therefore, any adverse secondary impacts to energy resources would be long-term, negligible, and mitigated by the use of available field gas to power operations. Any secondary impacts associated with the use of field gas that would otherwise be flared would be long-term, minor, and beneficial.

Cumulative Impacts:

Minor cumulative impacts on environmental resources of land, water, air, or energy are anticipated as a result of this permitting action. The number of oil and gas operations within Richland County contributes to vehicle traffic, inspections by various agencies, and employees for many sites. Collectively the large number of sites in the area would have minor cumulative impacts to land, water, air, and energy.

10. Impacts on Other Environmental Resources

The affected area consists primarily of agricultural and grazing lands with nearby, dispersed oil and

gas operations.

Direct Impacts:

Fugitive dust emissions resulting from construction of the proposed facility may adversely impact air quality in the affected area. However, Crusoe must use reasonable precautions to limit fugitive dust generated from construction activities; therefore, the proposed project would not be expected to cause or contribute to a violation of the applicable NAAQS for particulate matter (fugitive dust). See permit analysis for more detailed information regarding air quality impacts. Secondary NAAQS provide public welfare protection, including protection against decreased visibility and damage to animals, crops, vegetation, and buildings. Therefore, any adverse direct impacts to other environmental resources would be short-term and minor. No beneficial direct impacts would be expected because of the proposed project.

Secondary Impacts:

Proposed operations would not be expected to cause or contribute to a violation of the public welfare-based Secondary NAAQS. See permit analysis for more detailed information regarding air quality impacts. Secondary NAAQS provide public welfare protection, including protection against decreased visibility and damage to animals, crops, vegetation, and buildings. Therefore, any adverse secondary impacts to other environmental resources would be long-term and minor. No beneficial secondary impacts would be expected because of the proposed project.

Cumulative Impacts:

No other environmental resources, beyond the resource areas already covered within this EA would result in any known additional cumulative impacts.

11. Human Health and Safety

The engines proposed must meet the permit compliance conditions included in MAQP #5328-00. Personnel physical hazards would be present for high temperatures and noise specific to the engines.

Direct Impacts:

Construction activities involve the potential for adverse direct impacts to human health and safety. However, construction operations would be subject to OSHA standards, which are designed to be protective of human health and safety. Further, residents of the affected area would not be allowed on-site during construction of the proposed facility.

Also, fugitive dust emissions resulting from construction of the proposed facility may adversely impact air quality in the affected area. However, Crusoe must use reasonable precautions to limit fugitive dust generated from construction activities; therefore, the proposed project would not be expected to cause or contribute to a violation of the applicable NAAQS for particulate matter (fugitive dust). See permit analysis for more detailed information regarding air quality impacts. Primary NAAQS provide public health protection, including protecting the health of "sensitive" populations such as asthmatics, children, and the elderly. Therefore, any adverse direct impacts to human health and safety would be short-term and negligible to minor.

The engines are allowed to operate continuously 365 days per year. Since the engines are within a very rural private land parcel, any noise disturbance would be limited to the few area residents that may be in the area as well as oil and gas production workers. The nearest residence from the proposed site is approximately 1,800 feet or about .35 miles to the southeast of the proposed site. Other industrial buildings may exist at other oil and gas well operations but these do not appear to be permanently occupied.

Secondary Impacts:

Operation of the proposed facility would be subject to OSHA standards. OSHA standards are designed to be protective of human health and safety. Further, operation of the proposed engines would emit regulated air pollutants. However, emissions from the proposed project would use BACT and thus would not be expected to cause or contribute to a violation of the human health-based Primary NAAQS. See permit analysis for more information regarding air quality impacts. Primary NAAQS provide public health protection, including protecting the health of "sensitive" populations such as asthmatics, children, and the elderly. Therefore, any adverse secondary impacts to human health and safety would be long-term and negligible to minor. No beneficial secondary impacts would be expected because of the proposed project.

Cumulative Impacts:

No cumulative impacts to human health and safety are anticipated as a result of the proposed permitting action because the emissions as described in Section IV of the Permit Analysis would be considered small by industrial standards.

12. Industrial, Commercial, and Agricultural Activities and Production

The affected area consists primarily of agricultural and grazing lands with nearby, dispersed oil and gas operations.

Direct Impacts:

Construction of the proposed facility would displace land currently used for agricultural and grazing operations located near an existing industrial facility. Therefore, some adverse direct impacts to agricultural activities and production would occur. However, the proposed project is small by industrial standards ($\leq 1000 \text{ ft}^2$) and the area surrounding the affected site would remain suitable for ongoing agricultural and industrial activities and production.

Therefore, any adverse direct impacts to agricultural activities and production would be short-term, consistent with existing impacts, and negligible to minor. Operation of the proposed facility would displace current agricultural and grazing operations. Therefore, some adverse secondary impacts to agricultural activities and production would occur. However, the proposed project is small by industrial standards ($\leq 1000 \text{ ft}^2$) and the area surrounding the affected site would remain suitable for ongoing agricultural and industrial activities and production.

Further, industrial activities and production in the affected area would increase due to construction of the affected site. However, the scope of the proposed operation is relatively small by industrial standards. Therefore, any direct impacts to industrial

activities and production in the affected area would be short-term, minor and beneficial. No impacts to commercial activities or production are anticipated because of the proposed project.

Secondary Impacts:

Industrial activities and production in the affected area would increase because of the proposed project. Therefore, any secondary impacts to industrial activities and production would be long-term, minor, and beneficial. No adverse direct impacts would be expected because of the proposed project.

Cumulative Impacts:

Once the site is operational, it would be one of many oil and gas industrial sites in the area. Cumulatively, these operations provide an important industrial base to the area. These impacts would be long term and beneficial. Cumulative impacts on agricultural activities would be long term due to disturbance, but negligible to minor due to the small footprint (< 1000 ft²).

13. Quantity and Distribution of Employment

There are already existing staff and resources employed by Crusoe in the area, and these resources would be used to operate this facility as well.

Direct Impacts:

Crusoe would use existing staff or contracted services to construct the proposed facility. Therefore, any direct impacts to the quantity and distribution of employment in the affected area would be short-term, negligible, and beneficial. No adverse direct impacts would be expected because of the proposed project.

Secondary Impacts:

Crusoe would use existing staff to operate the proposed facility. Therefore, any secondary impacts to the quantity and distribution of employment in the affected area would be long-term, negligible, and beneficial. No adverse secondary impacts would be expected because of the proposed project.

Cumulative Impacts:

No cumulative impact is expected on long-term employment from the proposed action because the new facility would not be expected to create any permanent new jobs.

14. Local and State Tax Base and Tax Revenues

The proposed project would be small by industrial standards and the amount of time and resources necessary to accommodate construction of the proposed facility would be relatively limited.

Direct Impacts:

Construction of the proposed facility may increase local sales of goods and services. However, because the proposed project would be small by industrial standards any direct impacts to the local and state tax base and tax revenues would be long-term, negligible to

minor, and beneficial. No adverse direct impacts would be expected because of the proposed project.

Secondary Impacts:

Local, state and federal governments would be responsible for appraising the property, setting tax rates, collecting taxes, from the companies, employees, or landowners benefitting from the proposed operation. Further, Crusoe would be responsible for accommodation of any increased taxes associated with operation of the proposed facility. Therefore, any secondary impacts would be negligible to minor, consistent with existing impacts in the affected area, and beneficial. No adverse secondary impacts would be expected because of the proposed project.

Cumulative Impacts:

Long-term beneficial negligible to minor impacts to local and state tax base and tax revenues are anticipated from this permitting action.

15. Demand for Government Services

Direct Impacts:

The air quality permit has been prepared by state government employees as part of their day-to-day, regular responsibilities. Therefore, any adverse direct impacts to demands for government services is consistent with existing impacts and negligible. No beneficial direct impacts would be expected because of the proposed project.

Secondary Impacts:

Following construction of the proposed facility, initial and ongoing compliance inspections of facility operations would be accomplished by state government employees as part of their typical, regular duties and required to ensure the facility is operating within the limits and conditions listed in the air quality permit. Therefore, any adverse secondary impacts to demands for government services would be consistent with existing impacts and negligible. No beneficial secondary impacts would be expected because of the proposed project.

Cumulative Impacts:

Minor cumulative impacts are anticipated on government services with the proposed action and a minimal increase in impact would occur but regulators would likely combine visits to cover regulatory oversight needs.

16. Locally Adopted Environmental Plans and Goals

DEQ has reviewed the Richland County website and found no locally adopted environmental plans and goals for the area.

Direct Impacts:

No locally adopted environmental plans and goals were identified. Therefore, no direct impacts would be expected because of the proposed project.

Secondary Impacts:

No locally adopted environmental plans and goals were identified.; therefore, no secondary impacts to locally adopted environmental plans and goals would be expected because of the proposed project.

Cumulative Impacts:

No cumulative impacts to the locally adopted environmental plans and goals are anticipated since no direct impacts or secondary impacts were identified.

17. Access to and Quality of Recreational and Wilderness Activities

The affected area consists primarily of agricultural and grazing lands with nearby, dispersed oil and gas operations. There are Bureau of Land Management parcels scattered across Eastern Montana. There is one such parcel located directly east of the proposed site but would likely be land-locked by private land and not accessible to the general public.

Direct Impacts:

No recreational or wilderness areas occur in the vicinity of the proposed project. Therefore, no direct impacts to access and quality of recreational and wilderness activities would be expected because of the construction phase of the proposed project.

Secondary Impacts:

The affected area consists primarily of agricultural and grazing lands with nearby, dispersed oil and gas operations. No recreational or wilderness areas occur in the immediate area; therefore, no secondary impacts to access and quality of recreational and wilderness activities would be expected because of proposed facility operations.

Cumulative Impacts:

No cumulative impacts to access and quality of recreational and wilderness activities are anticipated as a result of the proposed permitting action as there are no public recreational or wilderness activity sites within 10 miles of the proposed project.

18. Density and Distribution of Population and Housing

The affected area consists primarily of agricultural and grazing lands with nearby, dispersed oil and gas operations.

Direct Impacts:

Crusoe would employ existing staff and/or contracted services to construct the facility and the proposed project would not be expected to otherwise result in an increase or decrease in the local population. Therefore, no direct impacts to density and distribution of population and housing would be expected because of the proposed project.

Secondary Impacts:

Crusoe would employ existing staff to operate the facility and the proposed project would not be expected to otherwise result in an increase or decrease in the local

population. Therefore, no secondary impacts to density and distribution of population and housing would be expected because of the proposed project.

Cumulative Impacts:

No cumulative impacts to density and distribution of population and housing are anticipated as a result of the proposed permitting. There are no impacts on the density and distribution of population and housing.

19. Social Structures and Mores

DEQ is not aware of any Native American cultural concerns that would be affected by the proposed activity. Based on the information provided by the Applicant, it is not anticipated that this project would disrupt traditional lifestyles or communities. Two SHPO cultural inventories were noted in Section 7 of the EA.

The existing nature of the area affected by the proposed project is both agricultural and industrial based on the large number of oil and gas wells in Richland County.

Direct Impacts:

Construction and operation of the facility would not be expected to affect the existing customs and values of the affected population. Therefore, no direct impacts to the existing social structures and mores of the affected population would be expected because of the proposed project.

Secondary Impacts:

The existing nature of the area affected by the proposed project is agricultural and industrial (oil and gas); therefore, operation of the facility would not be expected to affect the existing customs and values of the affected population. Therefore, no secondary impacts to the existing social structures and mores of the affected population would be expected because of the proposed project.

Cumulative Impacts:

The addition of engines at a site with agricultural and industrial activities would have negligible to minor cumulative impacts on the existing social structures because this site would be just one of many sites already operating in the area.

20. Cultural Uniqueness and Diversity

The existing nature of the area affected by the proposed project is agricultural and industrial (oil and gas). It is not anticipated that this project would cause a shift in some unique quality of the area.

Direct Impacts:

Crusoe would employ existing staff and/or contracted services to construct the facility and thus the proposed project would not be expected to otherwise result in an increase or decrease in the local population. Therefore, no direct impacts to the existing cultural uniqueness and diversity of the affected population would be expected because of the proposed project.

Secondary Impacts:

The existing nature of the area affected by the proposed project is agricultural and industrial (oil and gas). Further, Crusoe would employ existing staff to operate the facility and thus the proposed project would not be expected to result in an increase or decrease in the local population. Therefore, no secondary impacts to the existing cultural uniqueness and diversity of the affected population are anticipated as a result of the proposed action.

Cumulative Impacts:

No cumulative impacts to cultural uniqueness and diversity are anticipated because the skills required by this project would be similar to other existing sites in the area and this project would be considered small by industrial standards.

21. Private Property Impacts

The proposed project would take place on privately owned land. DEQ's approval of MAQP #5328-00 permit would not affect the applicant's real property. DEQ has determined that the permit conditions are reasonably necessary to ensure compliance with applicable requirements under the Montana Clean Air Act. Therefore, DEQ's approval of MAQP #5314-00 would not have private property-taking or damaging implications.

As required by 2-10-105, MCA, the Department conducted the following private property taking and damaging assessment.

YES	NO	
X		1. Does the action pertain to land or water management or environmental regulation affecting private real property or water rights?
	X	2. Does the action result in either a permanent or indefinite physical occupation of private property?
	X	3. Does the action deny a fundamental attribute of ownership? (ex.: right to exclude others, disposal of property)
	X	4. Does the action deprive the owner of all economically viable uses of the property?
	X	5. Does the action require a property owner to dedicate a portion of property or to grant an easement? [If no, go to (6)].
		5a. Is there a reasonable, specific connection between the government requirement and legitimate state interests?
		5b. Is the government requirement roughly proportional to the impact of the proposed use of the property?
	X	6. Does the action have a severe impact on the value of the property? (consider economic impact, investment-backed expectations, character of government action)
	X	7. Does the action damage the property by causing some physical disturbance with respect to the property in excess of that sustained by the public generally?
	X	7a. Is the impact of government action direct, peculiar, and significant?

YES	NO	
	X	7b. Has government action resulted in the property becoming practically inaccessible, waterlogged or flooded?
	X	7c. Has government action lowered property values by more than 30% and necessitated the physical taking of adjacent property or property across a public way from the property in question?
	X	Takings or damaging implications? (Taking or damaging implications exist if YES is checked in response to question 1 and also to any one or more of the following questions: 2, 3, 4, 6, 7a, 7b, 7c; or if NO is checked in response to questions 5a or 5b; the shaded areas)

22. Other Appropriate Social and Economic Circumstances

Direct Impacts:

DEQ is unaware of any other appropriate short-term social and economic circumstances in the affected area that may be directly impacted by the proposed project. Due to the nature of the proposed action, no further direct impacts would be expected because of the proposed project.

Secondary Impacts:

The proposed project would generate electricity to power a data center through the combustion of field gas gathered from multiple well pads that would otherwise be flared from an existing oil and gas facility, thereby eliminating or limiting emissions associated with uncontrolled field gas flaring activities. Further, the proposed operation would limit or eliminate economic expenditure necessary to operate the affected engines (i.e., fuel purchases). Any impacts to air quality from eliminating or limiting the flaring of field gas would be long-term, minor, and beneficial. Any impacts from limiting or eliminating economic expenditures to accommodate engine operations would be long-term, minor to moderate, and beneficial.

DEQ is unaware of any other appropriate long-term social and economic circumstances in the affected area that may be impacted by the proposed project. No further secondary impacts would be expected because of the proposed project.

Cumulative Impacts:

No cumulative impacts to any other appropriate social and economic circumstances are anticipated because no direct and secondary impacts were identified. The proposed project would take place on private land. DEQ has determined that the permit conditions are reasonably necessary to ensure compliance with applicable requirements under the Montana Clean Air Act. Therefore, DEQ's approval of MAQP #5328-00 would not have private property-taking or damaging implications.

23. Other Appropriate Social and Economic Circumstances

Due to the nature and scope of the proposed project activities, no further direct or secondary impacts would be anticipated from this project.

24. Greenhouse Gas Assessment

The proposed project is for the installation of up to ten (10) 2,500 hp natural gas fired generator engines. The analysis area for this resource is limited to the activities regulated by the issuance of MAQP #5328-00 which is the operation of up to ten (10) natural gas fired generator engines. The GHG emissions were calculated from the manufacturer's technical data sheet based on the heat value of natural gas in million British thermal units (MMBtu) and 8,760 hours per year (hr/yr) of operation.

For the purpose of this analysis, DEQ has defined greenhouse gas emissions as the following gas species: carbon dioxide (CO₂), methane (CH₄), nitrous oxide (N₂O), and many species of fluorinated compounds. The range of fluorinated compounds includes numerous chemicals which are used in many household and industrial products. Other pollutants can have some properties that also are similar to those mentioned above, but the EPA has clearly identified the species above as the primary Greenhouse Gases (GHGs). Water vapor is also technically a greenhouse gas, but its properties are controlled by the temperature and pressure within the atmosphere, and it is not considered an anthropogenic species.

Montana recently used the EPA State Inventory Tool (SIT) to develop a greenhouse gas inventory. This tool was developed by EPA to help states develop their own greenhouse gas inventories, and this relies upon data already collected by the federal government through various agencies. The inventory specifically deals with CO₂, CH₄, and N₂O and reports the total as CO₂e.

The SIT consists of eleven Excel based modules with pre-populated data that can be used as default settings or in some cases, allows states to input their own data when the state believes their own data provides a higher level of quality and accuracy. Once each of the eleven modules is filled out, the data from each module is exported into a final "synthesis" module which summarizes all of the data into a single file. Within the synthesis file, several worksheets display the output data in a number of formats such as emissions by sector and emissions by type of greenhouse gas. The SIT data is currently updated through the year 2021, as it takes several years to validate and make new data available within revised modules.

The combustion of natural gas at the site would release GHGs primarily being CO₂, N₂O, and much smaller concentrations of incomplete combustion of fuel components including CH₄ and other volatile organic compounds (VOCs).

Mobile emissions associated with this action are limited to construction of the site. This amount is insignificant and not included in the assessment. Additionally, there are no compressed gases, fire suppressants or refrigerants/air conditioning associated with this project which would have been considered Scope 1 emissions.

Direct Impacts

Operation of natural gas fired generator engines for the proposed project would produce exhaust fumes containing GHGs. DEQ has calculated GHG emissions using the EPA Simplified GHG Calculator version May 2023, for the purpose of totaling GHG emissions. This tool totals CO₂, N₂O, and CH₄ and reports the total as CO₂ equivalent (CO₂e) in metric tons CO₂e. If there are also fluorinated compounds associated with the project those may also be input into the GHG calculator. The calculations in this tool are widely accepted to represent reliable calculation approaches for developing a GHG inventory.

Application information indicates that between approximately 117,122 and 1,171,220 standard cubic feet (scf) of natural gas would be utilized per year based on the number of operational generator engines and fuel consumed per hour (scf/hr). To account for variability due to the factors described above, DEQ has calculated the emissions using the maximum value of the Applicant's estimate, ten (10) engines using 13,023 scf/hr each and a heat value of 1500 Btu per scf.

Using the EPA's simplified GHG Emissions Calculator for sources, a maximum of 93.16 metric tons of CO_{2e} would be produced per year of operation.

Secondary Impacts

GHG emissions contribute to changes in atmospheric radiative forcing, resulting in climate change impacts. GHGs act to contain solar energy loss by trapping longer wave radiation emitted from the Earth's surface and act as a positive radiative forcing component (BLM 2021).

The impacts of climate change throughout the Northern Great Plains of Montana include changes in flooding and drought, rising temperatures, and the spread of invasive species (BLM 2021).

Cumulative Impacts

DEQ has determined that the use of the default data provides a reasonable representation of the GHG inventory for all of the state sectors, and an estimated annual GHG inventory by year. At present, Montana accounts for 47.77 million metric tons of CO_{2e} based on the EPA State Inventory Tool for the year 2021. This project may contribute up to 0.00009794 million metric tons per year of CO_{2e}. The estimated emission of 0.00009794 million metric tons of CO_{2e} from this project would contribute 0.0000205% of Montana's annual CO_{2e} emissions.

GHG emissions that would be emitted as a result of the proposed activities would add to GHG emissions from other sources.

PROPOSED ACTION ALTERNATIVES

No Action Alternative: In addition to the proposed action, DEQ must also consider a "no action" alternative. The "no action" alternative would deny the approval of MAQP #5328-00. The applicant would lack the authority to conduct the proposed activity. Any potential impacts that would result from the proposed action would not occur. The no action alternative forms the baseline from which the impacts of the proposed action can be measured.

If the Applicant demonstrates compliance with all applicable rules and regulations required for approval, the "no action" alternative would not be appropriate.

Other Reasonable Alternative(s): No other alternatives were considered.

CONSULTATION

DEQ engaged in internal and external efforts to identify substantive issues and/or concerns related to the proposed project. Internal scoping consisted of internal review of the environmental assessment document by DEQ staff. External scoping efforts also included queries to the following websites/databases/personnel:

<https://www.richlandcountysc.gov/>

A review of the Richland County website, and listed department information did not

indicate any specific planning documents that would be relative to this permitting action. MAQP #5328-00 Application, EPA State Inventory Tool, and the EPA GHG Calculator Tool, State Historical Preservation Office, and NRIS.

PUBLIC INVOLVEMENT

The public comment period for this permit action is from 01/15/2025 through 0/30/2025. Public comments may be submitted to DEQ through the DEQ website, email, written letter, or in person.

OTHER GOVERNMENTAL AGENCIES WITH JURISDICTION

The proposed project would be located on private land. All applicable state and federal rules must be adhered to, which, at some level, may also include other state, or federal agency jurisdiction.

This environmental review analyzes the proposed project submitted by the Applicant. The project would be negligible and would be fully reclaimed to the permitted postmining land uses at the conclusion of the project and thus would not contribute to the long-term cumulative effects of mining in the area.

NEED FOR FURTHER ANALYSIS AND SIGNIFICANCE OF POTENTIAL IMPACTS

When determining whether the preparation of an environmental impact statement is needed, DEQ is required to consider the seven significance criteria set forth in ARM 17.4.608, which are as follows:

- The severity, duration, geographic extent, and frequency of the occurrence of the impact;
- The probability that the impact will occur if the proposed action occurs; or conversely, reasonable assurance in keeping with the potential severity of an impact that the impact will not occur;
- Growth-inducing or growth-inhibiting aspects of the impact, including the relationship or contribution of the impact to cumulative impacts – identify the parameters of the proposed action;
- The quantity and quality of each environmental resource or value that would be affected, including the uniqueness and fragility of those resources and values;
- The importance to the state and to society of each environmental resource or value that would be affected.
- Any precedent that would be set as a result of an impact of the proposed action that would commit the department to future actions with significant impacts or a decision in principle about such future actions; and
- Potential conflict with local, state, or federal laws, requirements, or formal plans.

CONCLUSIONS AND FINDINGS

DEQ finds that this action results in negligible impacts to air quality and GHG emissions in Richland County, Montana.

No significant adverse impacts would be expected because of the proposed project. As

noted through the draft EA, the severity, duration, geographic extent and frequency of the occurrence of the impacts associated with the proposed air quality project would be limited. The proposed action would result in the construction and operation of up to ten (10) 2,500 horsepower engines.

The Applicant is proposing to combust field gas that would otherwise be flared to generate electricity at the site as explained in MAQP #5314-00 to power data centers. The site would be permitted to operate the engines 8,760 hours per calendar year using BACT for the control of emissions from the proposed operations.

As discussed in this EA, DEQ has not identified any significant impacts associated with the proposed actions for any environmental resource. DEQ does not believe that the activities proposed by the Applicant would have any growth-inducing or growth-inhibiting aspects, or contribution to cumulative impacts. The proposed engine site does not appear to contain known unique or fragile resources.

There are no unique or known endangered fragile resources in the project area and no underground disturbance would be required for this project.

There would be negligible impacts to view-shed aesthetics as the engine operation would be visible to a very few residents. Employees at the operation and nearby oil and gas operations would see and hear the engine operations when in the immediate area of the site.

Demands on the environmental resources of land, water, air, or energy would not be significant. When the off-gas rates from the oil and gas wells decline, the engines would no longer be needed, and they would likely be moved to other more productive wells.

Impacts to human health and safety would not be significant as access roads would be closed to the public and because the site is on private land.

As discussed in this EA, DEQ has not identified any significant impacts associated with the proposed activities on any environmental resource.

Issuance of a Montana Air Quality Permit #5314-00 to the Applicant does not set any precedent that commits DEQ to future actions with significant impacts or a decision in principle about such future actions. If the Applicant submits another modification or proposes to amend the permit, DEQ is not committed to issuing those revisions.

DEQ would conduct an environmental review for any subsequent permit modifications sought by the Applicant pursuant to MEPA. DEQ would make permitting decisions based on the criteria set forth in the Clean Air Act of Montana.

Issuance of the Permit to the Applicant does not set a precedent for DEQ's review of other applications for Permits, including the level of environmental review. The level of environmental review decision is made based on case-specific consideration of the criteria set forth in ARM 17.4.608.

Finally, DEQ does not believe that the proposed air quality permitting action by the

Applicant would have any growth-inducing or growth inhibiting impacts that would conflict with any local, state, or federal laws, requirements, or formal plans.

Based on a consideration of the criteria set forth in ARM 17.4.608, no significant adverse impacts to the affected human environment would be expected because of the proposed project. Therefore, preparation of an Environmental Impact Statement or EIS is not required, and the draft EA is deemed the appropriate level of environmental review pursuant to MEPA.

Preparation and Approval

EA and Significance Determination prepared by:

John P. Proulx
Air Quality Engineering Scientist

Environmental Assessment Reviewed By:

Craig Jones, MEPA Coordinator, Department of Environmental Quality

Approved By:

Eric Merchant, Supervisor, Air Quality Permitting Services Section, Air Quality Bureau

REFERENCES

- 5328-00_2024_12_13_APP – Application received from Crusoe Energy Systems, Inc. on December 13, 2024 and additional information provided on December 30, 2024.
- EPA GHG Calculator Tool <https://www.epa.gov/statelocalenergy/state-inventory-and-projection-tool>
- EPA State Inventory Tool, <https://www.epa.gov/statelocalenergy/state-inventory-and-projection-tool>
- 2021 BLM Specialist Report on Annual Greenhouse Gas Emissions and Climate Trends, <https://www.blm.gov/>
- 5328-00_2024_03_21_SHPO – State Historical Preservation Office Investigation
- 5328-00_NRIS – Natural Resource Information System Endangered Species Investigation, <https://mtnhp.org>
<https://www.richlandcountysc.gov/>