



12/12/2025

Air Resources Management Bureau
Montana Department of Environmental Quality
PO Box 200901
Helena, MT 59620

Re: Yellowstone County Generating Station

To Whom it May Concern:

Enclosed please find NorthWestern Energy's (N.W.E.'s) application for certification of air pollution control equipment at the Yellowstone County Generating Station (YCGS). Also enclosed are the engineering drawings for the Selective Catalyst Reduction area, the Ammonia Tank Containment area, the P&ID drawing for the ammonia system, and the Exhaust Gas After-Treatment P&ID from the engine manufacturer (Caterpillar). An itemized cost schedule is enclosed for your review as well. Please also reference Permit #5261-00 for the approved Air Quality permit granted by your office.

If you have any questions or concerns, please contact me at the number below.

Thank you,

Miranda Edwards
Project Manager/Energy Supply
Miranda.edwards@northwestern.com
C 406-223-9805

Enclosures (6)



Air or Water Pollution Control and Carbon Capture Equipment Certification Application

Date 10/10/2025

Section A

Name NorthWestern Energy Corporation

Mailing Address 11 E Park St., Butte, MT 59701

Facility Address (if different from mailing address) 810 S. Strauch Rd, Laurel, MT 59044

Telephone (406) 223-9805

Contact Name and Phone Miranda Edwards, Project Manager (406) 223-9805

Email Address miranda.edwards@northwestern.com

Section B

Describe the type of operation conducted at the above location. Electric generating station.

Section C

- Describe the process(es) whose emissions or discharges are or will be controlled by the facility.
18 natural gas-fired reciprocating internal combustion engine electric generator sets. Air emissions from each unit are controlled by selective catalytic reduction (SCR w ammonia injection) and oxidation catalyst.

- Complete the following tables as applicable.

AIR

Emission (Particulates, SO ₂ , NO _x , CO, VOC, Pb, CO ₂ , etc.)	Emission Rate (Tons per Year (tpy) and Pounds per Hour (lb/hr))		Control Efficiency	
	With Facility	Without Facility	Design	Actual Performance
NOx	tpy	tpy	94%	97.7%
	1.70 lb/hr	27.22 lb/hr		
VOC + Formaldehyde	tpy	tpy	64.3%	97.3%
	2.44 lb/hr	6.83 lb/hr		
CO	tpy	tpy	92%	99.8%
	1.59 lb/hr	19.8 lb/hr		
	tpy	tpy		
	lb/hr	lb/hr		
	tpy	tpy		
	lb/hr	lb/hr		

Notes: SO₂ – sulfur dioxide, NO_x – oxides of nitrogen, CO – carbon monoxide, VOC – volatile organic compounds, Pb – lead, CO₂ – carbon dioxide

WATER

Contaminant Discharge	With Facility		Without Facility	
	Average Monthly Concentration (mg/L)	Average Daily Flow (MGD)	Average Monthly Concentration (mg/L)	Average Monthly Flow (MGD)

Notes: mg/L – milligrams per liter, MGD – Million Gallons per Day

3. Describe the method or technique used to estimate the rate of emissions or discharges (attach all calculations). The "With Facility" Controlled lb/hr values are taken directly from Montana Department of Environmental Quality (MDEQ) Air Quality Permit #5261-00. Uncontrolled lb/hr values are from the engine supplier. Actual performance values are calculated using on-site air emissions testing data using the average emissions from all engines. TPY values are variable depending on actual operating hours and on-site emissions testing data.

Section D

- List the type and description of air or water pollution control facility for which certification is desired. Eighteen Selective Catalytic Reduction (SCR) and oxidation catalyst systems, designed and provided by Caterpillar Power Generation Systems and installed by on-site EPC contractor. This system also includes the entire ammonia injection system (storage tanks, supply lines and pumps, dosing units, monitoring probes, etc.).
- Describe the purpose of each piece of equipment installed (for which certification is being sought), including the reason for installing the equipment. The SCR and oxidation catalyst systems control emissions of NOx, CO and VOCs including formaldehyde. The catalyst systems include the entire ammonia injection system, support structures, platforms, stairs and associated foundations.
- Mark the category for each piece of equipment installed (for which certification is being sought):
 - Replacement Equipment Maintenance of Existing Equipment
 - Repair of Existing Equipment Enhancement of Existing Equipment
 - New Equipment
- Provide the maintenance schedule and activity (e.g., downtime, percent of utilization, etc.) for each facility under consideration for certification. The plant will dispatch engines in order to avoid overlapping too many major scheduled maintenance events on the engines but will equalize operating hours to the extent practical. The emissions control systems and catalysts are constantly monitored with maintenance performed as needed.
- Describe the final disposition of pollutants or contaminants for each facility under consideration for certification. NOx is selectively reduced via ammonia injection and catalyst reaction to nitrogen gas, oxygen & water vapor in the SCR and CO is passively oxidized to CO2 gas. All air emissions exit the plant via the eighteen individual stacks.

6. What is the date that each facility under consideration for certification was placed (or is expected to be placed) in operation/service? The Yellowstone County Generating Station was deemed commercial on October 25, 2024.
7. What is the useful operating life of each facility under consideration for certification?
The catalyst is monitored to ensure effectiveness and requires periodic replacement (e.g., maybe every 5 yrs).
The design life of the plant is 30 years but will be maintained to continue operation well beyond the design life.
All emissions control equipment is monitored & replaced as needed to keep the system 100% operational.
8. Does (or when completed, will) each facility under consideration for certification conform to water and air pollution control requirements or standards? Yes. The plant is in compliance with all requirements included in the plant's air quality permit issued by MDEQ.
9. For equipment that is used for multiple purposes, provide a detailed breakdown (by percentage) of the use of the equipment ([ARM 17.8.102](#)). The information should differentiate the extent to which the equipment is used for pollution control or carbon capture purposes as compared to other purposes.
See attached for a breakdown of the equipment, structures and foundations associated with the air pollution control equipment.
10. Provide a detailed itemization of capital and operating costs for each piece of equipment under consideration for certification in this application ([ARM 17.80.103\(5\)](#) and [ARM 17.8.103\(6\)](#)).
11. Attach a copy of the plans, specifications and drawings of the facility for which certification is desired. Include the cost of the facility and operating cost per month.
12. I certify that, on the date of this application, my company is in substantial compliance with all rules, laws, orders and permit conditions applicable to the equipment that is the subject of this certification application.

Section E

Certification

I hereby certify that I have read the contents of the foregoing application and know the contents thereof, and that the same are true and complete to the best of my knowledge, information and belief.

Applicant Signature Miranda Edwards

Section F

For Agency Use Only

File Number _____

Application and supporting data reviewed by _____

Recommendation _____

Mail a completed application to each of the following addresses:

Montana Department of Environmental Quality
 Permitting and Compliance Division
 1520 E Sixth Avenue
 PO Box 200901
 Helena, MT 59620-0901

Montana Department of Revenue
 PO Box 8018
 Helena, MT 59604-8018

Air or Water Pollution Control and Carbon Capture Equipment Certification Application Instructions

General Information

1. Complete a separate application for each facility for which certification is desired.
2. Submit one application to each of the following three entities:
 - 1) Department of Environmental Quality (DEQ)
Permitting and Compliance Division
PO Box 200901
Helena, MT 59620-0901
 - 2) Department of Revenue (DOR)
PO Box 8018
Helena, MT 59604-5805
 - 3) The county commissioners of the county in which the property is located.

Call DEQ's Permitting and Compliance Division, (406) 444-4323, with specific questions regarding air or water pollution control equipment.
3. To be eligible to receive pollution control status for the current tax year, the application must be received by the DEQ on or before January 1 of that year ([ARM 42.19.1203](#)).
4. When necessary, attach additional sheets to furnish required information with the corresponding question number.
5. Note on the application when requested information is not applicable to the facility for which the application is made.

General Instructions

Section A

Complete general applicant and facility information.

Section B

1. Describe the type of the operation conducted at the location or proposed location of the facility.
2. If the facility does not control or is not intended to control wastewater from the entire operation at the facility location, describe the specific processes whose wastewater the facility controls (or intended to control).

Section C

1. Describe in detail the specific processes whose emissions or discharges the facility, equipment or device is intended to control.
2. List the contaminants that are emitted from the unit process and that are discharged into the outdoor environment. Give the rates of emissions with and without the facility in pounds per hour and tons per year for air pollution control equipment. List water pollution control equipment discharge concentrations in milligrams per Liter (mg/L) and flows in Million Gallons per Day (MGD). Indicate efficiencies for both design and actual performance.
3. Calculations for the method, formula or theory used in estimating rate of emissions must be attached.

Section D

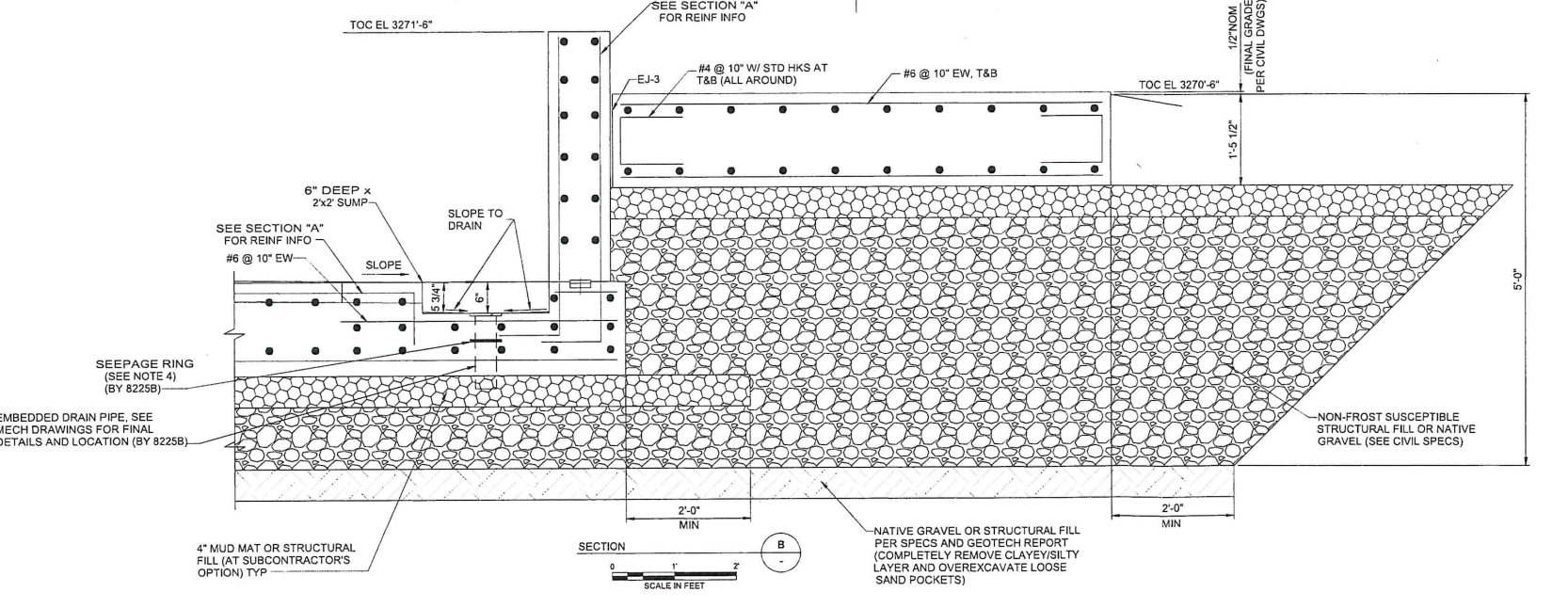
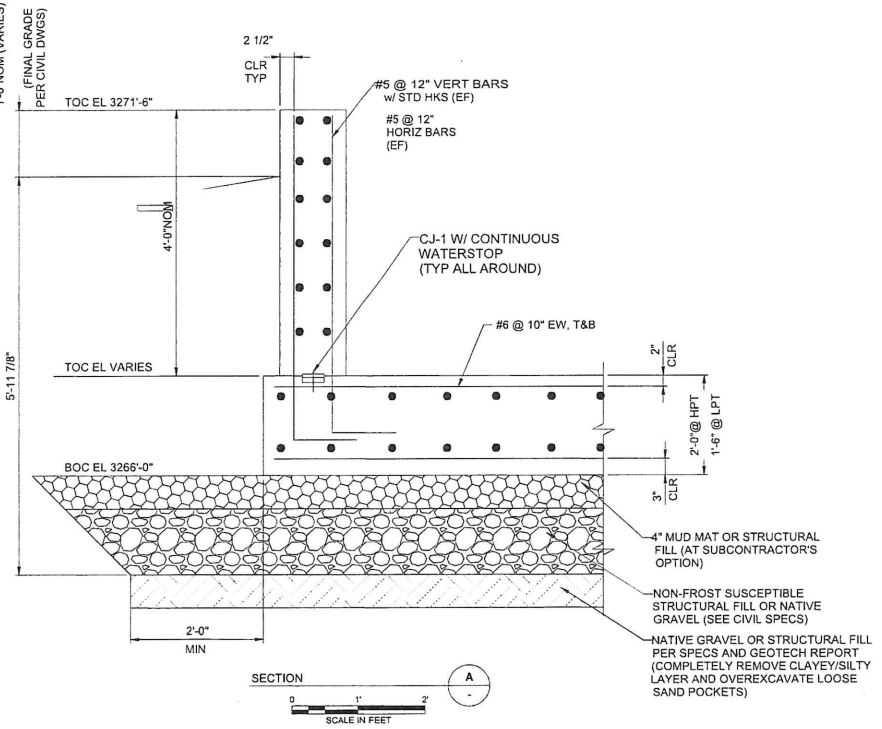
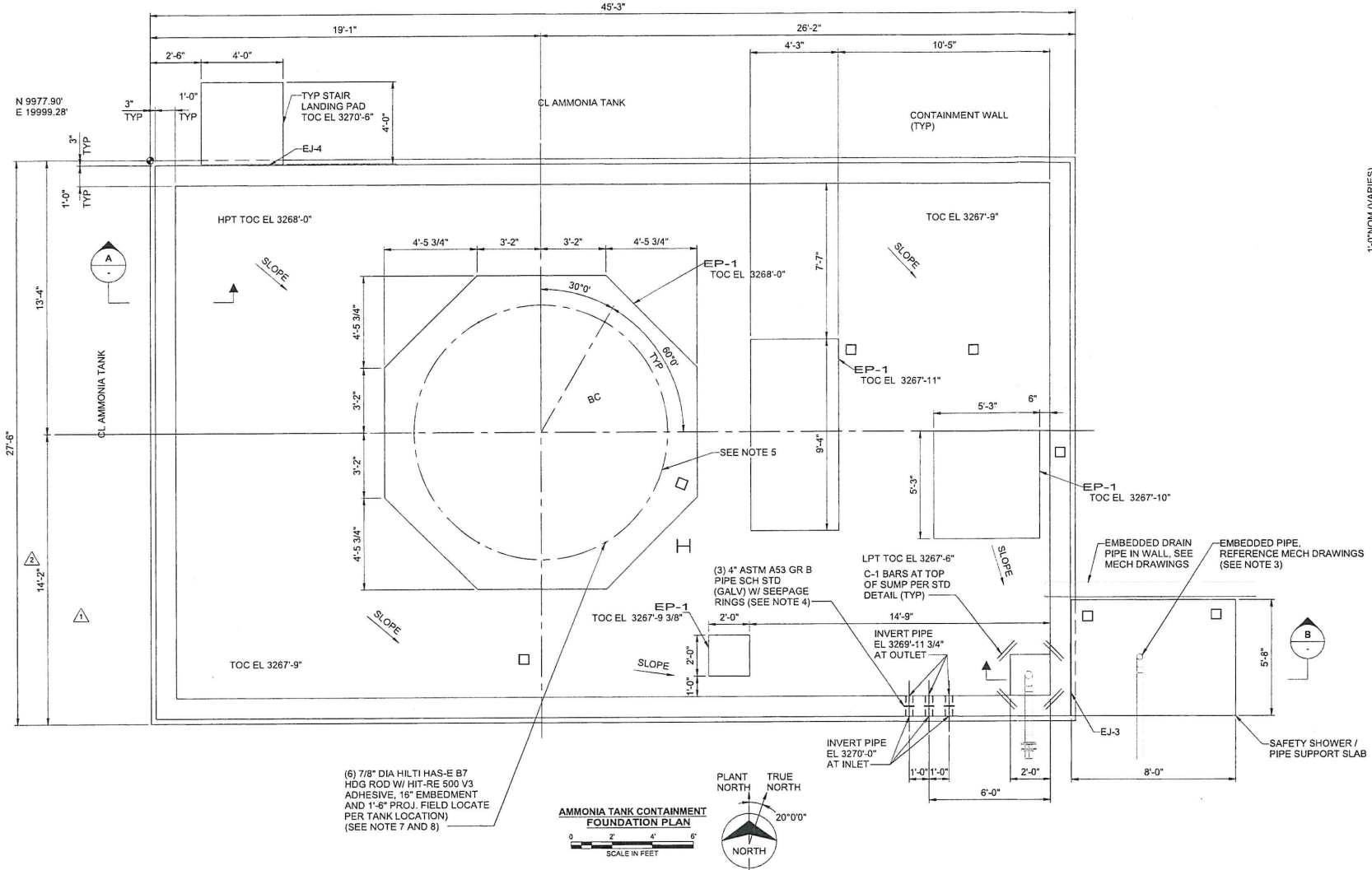
1. Identify the type of air or water pollution control facility or carbon capture equipment and describe in detail the specific equipment for which certification is desired, including the name of the manufacturer.
2. Describe the purpose of each piece of equipment under consideration for certification, specifically focusing on whether the equipment is being installed a) for the purposed of environmental benefit, b) to comply with state or federal pollution control regulations, or c) for some other reason.
3. Identify the category description that best describes the equipment under consideration for certification (replacement, maintenance, repair, enhancement or new).
4. Describe the type of maintenance needed or anticipated to keep the facility operating at maximum efficiency. Include estimated hours of downtime and whether effluent continues through these periods of downtime.
5. Describe the final disposition of contaminants, air or water, which have been removed, altered, disposed of or stored by the facility.
6. Give the approximate date on which the facility was first placed (or is expected to be placed) in service and effectively operated.
7. Identify the planned/estimated life efficiency for the equipment under consideration for certification.
8. Identify whether or not the equipment under consideration for certification conforms to the applicable air quality or water quality requirements or standards.
9. Identify the use of the equipment. For equipment that has multiple purposes, provide a detailed breakdown of the use of the equipment, estimating the time/value used for air or water pollution control and the time/value used for other purposes.
10. Provide a detailed itemization of capital and operating costs.
11. Provide plans, specifications and drawings of the equipment for which certification is under consideration.
12. Identify whether or not you believe the company is in substantial compliance with all rules, laws, orders and permit conditions applicable to the equipment.

Section E

Application certification must be signed by an authorized representative of the company seeking certification.

Section F

Agency Review



- NOTES:**
- FOR GENERAL NOTES AND ABBREVIATIONS, SEE DRAWING SF00-000. FOR STANDARD CONCRETE DETAILS, SEE DRAWINGS SF00-001 THRU SF00-008.
 - FOR OVERALL FOUNDATION LOCATION PLAN, SEE DRAWING SF00-100.
 - REFER TO MECHANICAL DRAWINGS FOR FINAL DETAILS REGARDING DRAIN PIPE SCREEN/COVER (IF REQUIRED), PROVIDED AND INSTALLED WITH PIPE BY 8225B.
 - ADD SEEPAGE RING IN THE CENTER OF THE WALL TO PIPE EMBEDMENT, THE SEEPAGE RING TO BE PL 1/4" WITH AN OUTSIDE RADIUS OF 2" PLUS THE OUTSIDE RADIUS OF THE EMBEDDED PIPE. WELD RING TO PIPE USING A 3/16" FILLET WELD ALL AROUND ON BOTH SIDES.
 - PRIOR TO TANK INSTALLATION SEE MECHANICAL AND VENDOR DRAWINGS FOR GROUT INSTALLATION INSTRUCTIONS (BY 8320).
 - FOR EMBEDDED COMPONENTS SUCH AS CONDUITS AND PLUMBING SEE APPROPRIATE DESIGN DRAWINGS. SUBCONTRACTOR IS TO ENSURE THAT ALL OF THESE COMPONENTS ARE INSTALLED AND APPROVED PRIOR TO POURING CONCRETE.
 - ALL POST-INSTALLED ADHESIVE ANCHOR BOLTS SHOWN ON THIS DRAWING SHALL BE INSTALLED USING HILTI SAFE SET SYSTEM WITH HOLLOW DRILL BIT (TE-CD OR TE-YD) AND VC 150/300 VACUUM SYSTEM. VERIFY OVERALL EQUIPMENT LOCATION AND DIMENSIONS BETWEEN ANCHORS WITH APPROPRIATE EQUIPMENT DRAWINGS & ACTUAL EQUIPMENT IN THE FIELD BEFORE INSTALLING ANCHORS FOR AMMONIA TANK ANCHORS, USE HILTI HIT-SZ INJECTION PISTONS AND FLEXIBLE EXTENSION HOSES OR OTHER MANUFACTURER APPROVED METHOD FOR DEEP EMBEDMENT INSTALLATION. ENSURE ADHESIVE INJECTION INTO THE DRILLED HOLE IS CONSISTENT AND FREE OF VOIDS.
 - ALL POST-INSTALLED ANCHOR BOLTS SHOWN ON THIS DRAWING ARE TO BE INSTALLED BY 8320, UNLESS OTHERWISE NOTED.

no.	date	by	ckd	description	no.	date	by	ckd	description
3	04/28/23	WRL	JCD	ADDED EQUIPMENT PADS AS INDICATED					
2	08/01/22	NSH	JCD	UPDATED PER AMMONIA TANK VENDOR INFORMATION					
1	05/13/22	NSH	JCD	ISSUED FOR CONSTRUCTION					
0	01/14/22	NAM	JCD	ISSUED FOR BID	4	11/15/24	RO	JH	FOR RECORD - NIC

NorthWestern Energy
Delivering a Bright Future

YELLOWSTONE COUNTY, MONTANA

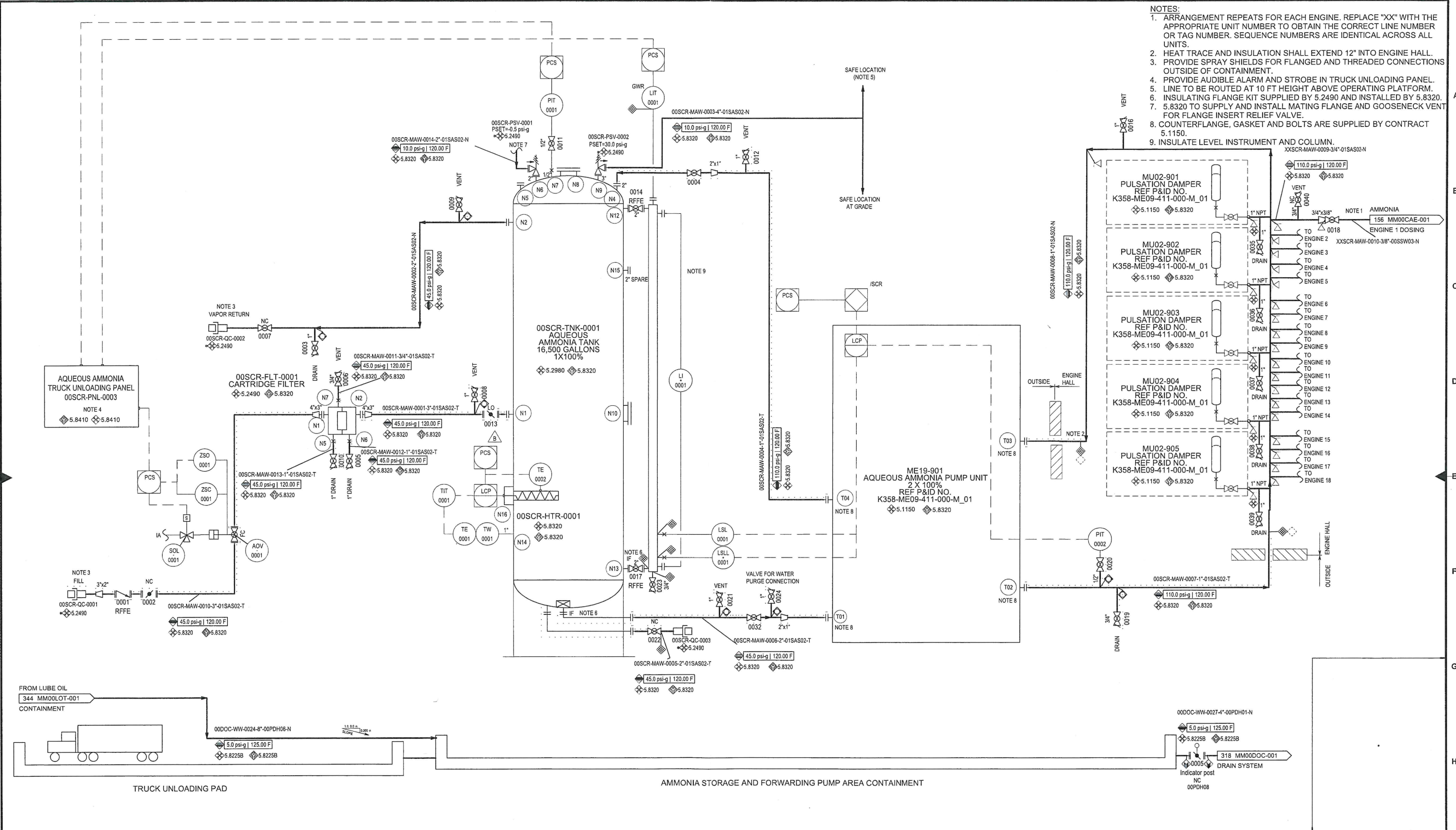
STRUCTURAL FOUNDATION
AMMONIA TANK CONTAINMENT
FOUNDATION PLAN, SECTIONS & DETAILS

project	133957	contract	8220
drawing	SF00-140	rev.	4
sheet	of	sheets	
file			

11/29/2023 1:05:58 PM

- NOTES:
- ARRANGEMENT REPEATS FOR EACH ENGINE. REPLACE "XX" WITH THE APPROPRIATE UNIT NUMBER TO OBTAIN THE CORRECT LINE NUMBER OR TAG NUMBER. SEQUENCE NUMBERS ARE IDENTICAL ACROSS ALL UNITS.
 - HEAT TRACE AND INSULATION SHALL EXTEND 12" INTO ENGINE HALL.
 - PROVIDE SPRAY SHIELDS FOR FLANGED AND THREADED CONNECTIONS OUTSIDE OF CONTAINMENT.
 - PROVIDE AUDIBLE ALARM AND STROBE IN TRUCK UNLOADING PANEL.
 - LINE TO BE ROUTED AT 10 FT HEIGHT ABOVE OPERATING PLATFORM.
 - INSULATING FLANGE KIT SUPPLIED BY 5.2490 AND INSTALLED BY 5.8320.
 - 5.8320 TO SUPPLY AND INSTALL MATING FLANGE AND GOOSENECK VENT FOR FLANGE INSERT RELIEF VALVE.
 - COUNTERFLANGE, GASKET AND BOLTS ARE SUPPLIED BY CONTRACT 5.1150.
 - INSULATE LEVEL INSTRUMENT AND COLUMN.

Millimeters
Scale For Microdrawing
Inches



no.	date	by	ckd	description	no.	date	by	ckd	description
2	11/15/24	DT	JH	FOR RECORD					
1	12/16/22	MED	SMS	REVISED AS SHOWN					
0	11/11/22	ADS	SRB	ISSUED FOR CONSTRUCTION					

NorthWestern Energy
Delivering a Bright Future
YELLOWSTONE GENERATING STATION
YELLOWSTONE COUNTY, MONTANA

Piping & Instrumentation Diagram
AQUEOUS AMMONIA SYSTEM

project	contract
133957	MULTIPLE
drawing	rev.
MM00SCR-001	- 2
sheet	of sheets

file 133957MM00SCR001.pld



Caterpillar Motoren GmbH & Co. KG

Project: **Yellowstone Generating Station
USA / 18x G20CM34**
Title: **Exhaust Gas After Treatment
P&ID**

Page: 1 of 4

Revision: H

Doc. No: **K358-ME09-411-000-M_01**

Issue Date: 14-Mar-2023

**Yellowstone Generating Station
USA / 18x G20CM34**

**Exhaust Gas After Treatment
P&ID**

Prepared by: Caterpillar

Copying, redistribution of any of the contents of this document without the express consent of Caterpillar is expressly prohibited.

Caterpillar Motoren GmbH & Co. KG

Project: **Yellowstone Generating Station**
USA / 18x G20CM34
Exhaust Gas After Treatment
 Title: **P&ID**

Page: 2 of 4

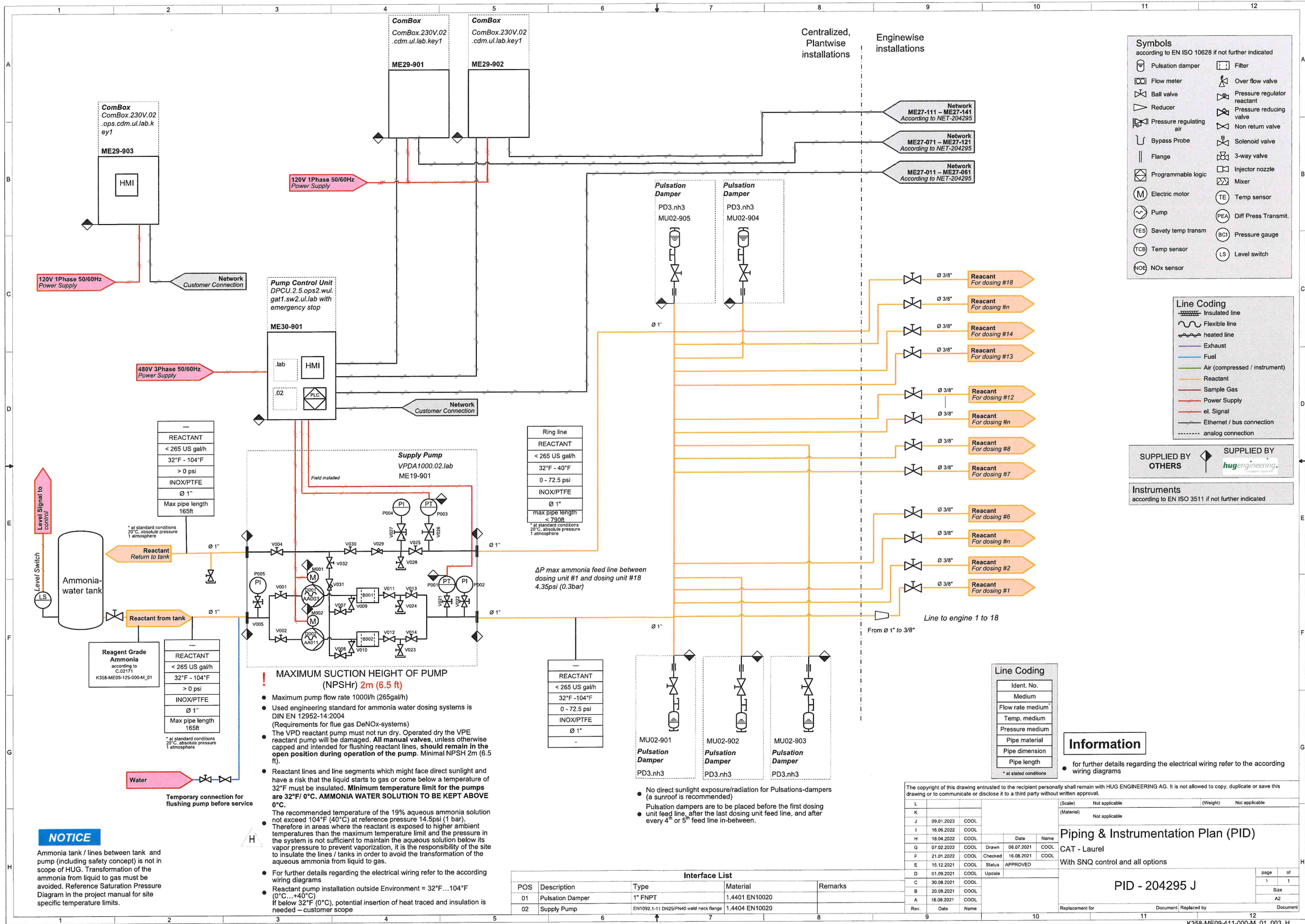
Revision: H

Doc. No: **K358-ME09-411-000-M_01**

Issue Date: 14-Mar-2023

REVISION SIGNATURES			
Z.Wang	6-Sep-2021	J. Schulze	6-Sep-2021
Prepared by (Name)	Date	Approved by	Issue Date
B. Flühshöh	6-Sep-2021	-	-
Checked by	Date	Approved by (If case)	Date
REVISION HISTORY			
ISSUE DATE	REVISION	Status	
25. Mai. 2021	-	Issue for customer review	
6. Sep. 2021	A	Issue for customer review	
28. Dez. 2021	B	Revised according customer call December 8th	
28. Jan. 2022	C	Status For Design	
18. Mai. 2022	D	Design change of supply pump module	
23. Jun. 2022	E	added HMI on ComBox 3 ME29 & DPCU panel ME30	
1. Sep. 2022	F	Update	
17. Jan. 2023	G	Update of ammonia-water mixture temperature range	
14. Mrz. 2023	H	Updated Note of ammonia-water mixture	

This document has been adapted by highlighting the portions / paragraphs which are specific to our deliverables under this project. Please note that those portions of this document with general content are continuously applicable and need to be taken into account.



Symbols
according to EN ISO 10628 if not further indicated

Line Coding

	Insulated line
	Flexible line
	heated line
	Exhaust
	Fuel
	Air (compressed / instrument)
	Reactant
	Sample Gas
	Power Supply
	el. Signal
	Ethernet / bus connection
	analog connection

SUPPLIED BY OTHERS SUPPLIED BY HUG ENGINEERING

Instruments according to EN ISO 3511 if not further indicated

! MAXIMUM SUCTION HEIGHT OF PUMP (NPSH) 2m (6.5 ft)

- Maximum pump flow rate 1000l/h (265gal/h)
- Used engineering standard for ammonia water dosing systems is DIN EN 12952-14:2004 (Requirements for flue gas DeNOx-systems)
- The VPD reactant pump must not run dry. Operated dry the VPE reactant pump will be damaged. All manual valves, unless otherwise capped and intended for flushing reactant lines, should remain in the open position during operation of the pump. Minimal NPSH 2m (6.5 ft).
- Reactant lines and line segments which might face direct sunlight and have a risk that the liquid starts to gas or come below a temperature of 32°F must be insulated. **Minimum temperature limit for the pumps are 32°F/ 0°C. AMMONIA WATER SOLUTION TO BE KEPT ABOVE 0°C.**
The recommended temperature of the 19% aqueous ammonia solution not exceed 104°F (40°C) at reference pressure 14.5psi (1 bar).
- Therefore in areas where the reactant is exposed to higher ambient temperatures than the maximum temperature limit and the pressure in the system is not sufficient to maintain the aqueous solution below its vapor pressure to prevent vaporization, it is the responsibility of the site to insulate the lines / tanks in order to avoid the transformation of the aqueous ammonia from liquid to gas.
- For further details regarding the electrical wiring refer to the according wiring diagrams
- Reactant pump installation outside Environment = 32°F...104°F (0°C...+40°C)
If below 32°F (0°C), potential insertion of heat traced and insulation is needed – customer scope

NOTICE

Ammonia tank / lines between tank and pump (including safety concept) is not in scope of HUG. Transformation of the ammonia from liquid to gas must be avoided. Reference Saturation Pressure Diagram in the project manual for site specific temperature limits.

Interface List

POS	Description	Type	Material	Remarks
01	Pulsation Damper	1" FNPT	1.4401 EN10020	
02	Supply Pump	EN1092-1-11 DN25/PN40 weld neck flange	1.4404 EN10020	

The copyright of this drawing entrusted to the recipient personally shall remain with HUG ENGINEERING AG. It is not allowed to copy, duplicate or save this drawing or to communicate or disclose it to a third party without written approval.

L		(Scale)	Not applicable	(Weight)	Not applicable
K		(Material)	Not applicable		
J	09.01.2023	COOL			
I	16.06.2022	COOL			
H	18.04.2022	COOL			
G	07.02.2022	COOL	Drawn	06.07.2021	COOL
F	21.01.2022	COOL	Checked	16.08.2021	COOL
E	15.12.2021	COOL	Status	APPROVED	
D	01.09.2021	COOL	Update		
C	30.08.2021	COOL			
B	20.08.2021	COOL			
A	16.08.2021	COOL			
Rev.	Date	Name			

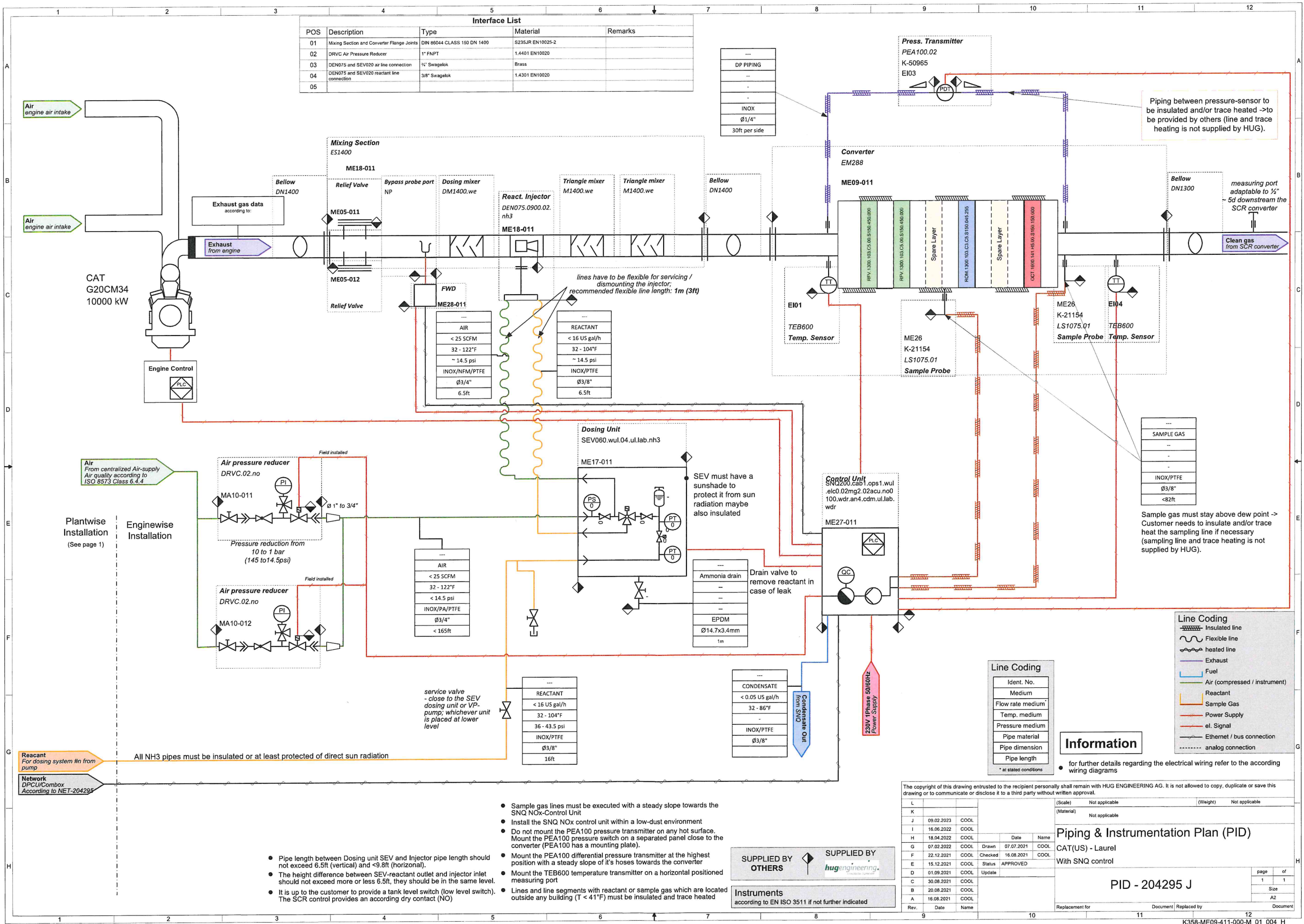
Piping & Instrumentation Plan (PID)
CAT - Laurel
With SNQ control and all options

PID - 204295 J

Replacement for	Document	Replaced by	Document
-----------------	----------	-------------	----------

page 1 of 1
Size A2
Document

Interface List				
POS	Description	Type	Material	Remarks
01	Mixing Section and Converter Flange Joints	DIN 86044 CLASS 150 DN 1400	S235JR EN10025-2	
02	DRVC Air Pressure Reducer	1" FNPT	1.4401 EN10020	
03	DEN075 and SEV020 air line connection	1" Swagelok	Brass	
04	DEN075 and SEV020 reactant line connection	3/8" Swagelok	1.4301 EN10020	
05				



- Sample gas lines must be executed with a steady slope towards the SNQ NOx-Control Unit
- Install the SNQ NOx control unit within a low-dust environment
- Do not mount the PEA100 pressure transmitter on any hot surface. Mount the PEA100 pressure switch on a separated panel close to the converter (PEA100 has a mounting plate).
- Mount the PEA100 differential pressure transmitter at the highest position with a steady slope of it's hoses towards the converter
- Mount the TEB600 temperature transmitter on a horizontal positioned measuring port
- Lines and line segments with reactant or sample gas which are located outside any building (T < 41°F) must be insulated and trace heated
- Pipe length between Dosing unit SEV and Injector pipe length should not exceed 6.5ft (vertical) and <9.8ft (horizontal).
- The height difference between SEV-reactant outlet and injector inlet should not exceed more or less 6.5ft, they should be in the same level.
- It is up to the customer to provide a tank level switch (low level switch). The SCR control provides an according dry contact (NO)

SUPPLIED BY OTHERS **SUPPLIED BY hug engineering**

Instruments according to EN ISO 3511 if not further indicated

Line Coding	
	Insulated line
	Flexible line
	heated line
	Exhaust
	Fuel
	Air (compressed / instrument)
	Reactant
	Sample Gas
	Power Supply
	el. Signal
	Ethernet / bus connection
	analog connection

Line Coding	
Ident. No.	Medium
Flow rate medium	
Temp. medium	
Pressure medium	
Pipe material	
Pipe dimension	
Pipe length	

Information

• for further details regarding the electrical wiring refer to the according wiring diagrams

The copyright of this drawing entrusted to the recipient personally shall remain with HUG ENGINEERING AG. It is not allowed to copy, duplicate or save this drawing or to communicate or disclose it to a third party without written approval.

Rev.	Date	Name	Status	APPROVED
L				
K				
J	09.02.2023	COOL		
I	16.06.2022	COOL		
H	18.04.2022	COOL		
G	07.02.2022	COOL	Drawn	07.07.2021
F	22.12.2021	COOL	Checked	16.08.2021
E	15.12.2021	COOL	Status	APPROVED
D	01.09.2021	COOL	Update	
C	30.08.2021	COOL		
B	20.08.2021	COOL		
A	16.08.2021	COOL		

Replacement for: _____ Document: _____ Replaced by: _____ Document: _____

Piping & Instrumentation Plan (PID)
 CAT(US) - Laurel
 With SNQ control

PID - 204295 J

page 1 of 1
 Size A2

Replacement for: _____ Document: _____ Replaced by: _____ Document: _____



Project: Yellowstone Generating Station
Scope: Pollution Control Tax Credit

	Total Costs
Ammonia Area*	
Ground Mat	\$ 1,526,329
Earthwork	\$ 1,369,009
Concrete	\$ 2,389,424
Fire Protection System	\$ 2,117,250
Aqueous Ammonia Tank	\$ 1,221,339
Aqueous Ammonia Module	\$ 222,196
Aqueous Ammonia Pumps	\$ 222,196
Aqueous Ammonia Dosing & Injection System	\$ 1,247,755
Subtotal	\$ 10,315,498

Water Treatment Area	
Drainage & Sewer System	\$ 1,504,537
Waste Water Holding Tank	\$ 219,332
Subtotal	\$ 1,723,869

	Total Costs
Earthwork (Exhaust Stack)	\$ 2,137,198
Foundations (Exhaust Stack)	\$ 5,654,193
GSU Foundations/Secondary Containment	\$ 2,906,956
Exhaust System	\$ 7,464,934
Exhaust Gas Expansion Joint Set B	\$ 1,034,509
Exhaust System Rupture Disk	\$ 1,034,509
Exhaust Gas Ventilation Valves	\$ 1,034,509
Exhaust Gas Ventilation Fans	\$ 1,034,509
Exhaust Gas Ventilation Instrumentation	\$ 1,034,509
Exhaust Gas Expansion Joint After Turbo Charger	\$ 1,034,509
Earthwork (SCR Area)	\$ 2,137,198
Pollution Control Monitoring System - Hug System	\$ 1,109,102
SCR-Catalyst-Pollution Control System Units-Hug System	\$ 9,116,332
SCR-Pollution Control System-HUG System	\$ 1,247,755
Nox Controllers-Pollution Control System	\$ 301,368
Oil Water Separator	\$ 627,682
Subtotal	\$ 38,909,772

Grand Total	\$ 50,949,139
--------------------	----------------------