

September 8, 2023

Chad Bauer, General Manager
Montana Waste Systems, Inc.
High Plains Sanitary Landfill and Recycling Center
P.O. Box 2645
Great Falls, MT 59403

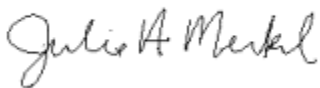
Sent via email: cbauer2@republicservices.com

RE: Final Permit Issuance for MAQP #2981-00

Dear Mr. Bauer:

Montana Air Quality Permit (MAQP) #2981-00 is deemed final as of September 6, 2023, by DEQ. This permit is for Montana Waste Systems, Inc. All conditions of the Decision remain the same. Enclosed is a copy of your permit with the final date indicated.

For DEQ,



Julie A. Merkel
Permitting Services Section Supervisor
Air Quality Bureau
(406) 444-3626



John P. Proulx
Air Quality Engineer
Air Quality Bureau
(406) 444-5391

Montana Department of Environmental Quality
Air, Energy & Mining Division
Air Quality Bureau

Montana Air Quality Permit #2981-00

Montana Waste Systems, Inc.
High Plains Sanitary Landfill and Recycling Center
P.O. Box 2645
Great Falls, MT 59403

September 6, 2023



MONTANA AIR QUALITY PERMIT

Issued To: Montana Waste Systems, Inc. - MAQP: #2981-00
High Plains Sanitary Landfill Application Complete: 06/08/2023
and Recycling Center Preliminary Determination Issued: 07/14/2023
P.O. Box 2645 Department's Decision Issued: 08/18/2023
Great Falls, MT 59403 Permit Final: 09/06/2023

A Montana Air Quality Permit (MAQP), with conditions, is hereby granted to Montana Waste Systems, Inc. - High Plains Sanitary Landfill and Recycling Center (High Plains), pursuant to Sections 75-2-204 and 211 of the Montana Code Annotated (MCA), as amended, and Administrative Rules of Montana (ARM) 17.8.740, *et seq.*, as amended, for the following:

Section I: Permitted Facilities

A. Permitted Equipment

High Plains proposes to install and operate a 1,000 standard cubic foot per minute (scfm) enclosed flare and associated equipment to collect and transport the landfill gas to the flare.

B. Plant Location

The High Plains flare will be located at Section 35, Township 22 North and Range 4 East, Latitude 47.62191, Longitude -111.184161. The physical address of High Plains is 142 Powerline Rd, Floweree, MT.

Section II: Conditions and Limitations

A. Emission Limitations

1. High Plains shall install and continuously operate process instrumentation to demonstrate that a minimum temperature of 1500 F (on a 15-minute rolling average) is being maintained whenever waste gas is being combusted in the enclosed flare (ARM 17.8.749 and ARM 17.8.752).
2. High Plains shall use pipeline quality natural gas as supplemental fuel for the enclosed flare and maintain good combustion practices to minimize emissions (ARM 17.8.749 and ARM 17.8.752).
3. High Plains shall install an enclosed flare with design specifications for no less than 98.0 percent destruction efficiency (ARM 17.8.749 and ARM 17.8.752).
4. Emissions from enclosed flare shall not exceed the following based on a 1-hour average (ARM 17.8.749 and ARM 17.8.752):

Oxides of Nitrogen (NO_x) – 0.5 lb/hr
Carbon Monoxide (CO) – 5.46 pounds per hour (lb/hr)
Volatile Organic Compounds (VOC) – 0.05 lb/hr

Sulfur Dioxide (SO₂) – 1.96 lb/hr
Hazardous Air Pollutants (HAPs) – 0.26 lb/hr
Total Particulate Matter (PM_{Tot}) – 0.5 lb/hr
Filterable and Condensable PM with an aerodynamic diameter of 10 microns or less (PM₁₀) – 0.5 lb/hr
Filterable and Condensable PM with an aerodynamic diameter of 2.5 microns or less (PM_{2.5}) – 0.5 lb/hr

5. High Plains shall install, calibrate, and continuously operate a flowmeter and hour-meter, or any other equivalent device, on the enclosed flare system to determine the total flow of landfill gas to the enclosed flare. The flow rate measuring device shall record flow at least every 15 minutes (ARM 17.8.749).
6. High Plains shall not cause or authorize emissions to be discharged into the outdoor atmosphere from the enclosed flare that exhibit an opacity of 10% or greater averaged over 6 consecutive minutes (ARM 17.8.316).
7. High Plains shall not cause or authorize emissions to be discharged into the outdoor atmosphere from any sources installed after November 23, 1968, that exhibit an opacity of 20% or greater averaged over 6 consecutive minutes (ARM 17.8.304).
8. High Plains shall not cause or authorize the use of any street, road, or parking lot without taking reasonable precautions to control emissions of airborne particulate matter (ARM 17.8.308).
9. High Plains shall treat all unpaved portions of the haul roads, access roads, and the general plant area with water and/or chemical dust suppressant as necessary to maintain compliance with the reasonable precautions limitation in Section II.A.8 (Arm 17.8.749).

B. Testing Requirements

1. All compliance source tests shall conform to the requirements of the Montana Source Test Protocol and Procedures Manual (ARM 17.8.106).
2. High Plains shall conduct initial source testing within 180 days of the initial startup of the enclosed flare to demonstrate the destruction efficiency of the enclosed flare and to demonstrate compliance with the minimum destruction efficiency of either 98.0 percent or an outlet concentration of 20 ppmv of hexane.

High Plains shall utilize EPA Methods 25A, 7E, & 10 and/or equivalent methods to determine/validate VOC, NO_x, & CO destruction performance respectively. Testing for NO_x and CO shall occur concurrently (ARM 17.8.749).

3. High Plains shall conduct weekly observations for visible opacity of the enclosed flare. If visible opacity is observed, High Plains shall conduct an EPA Method 9 Visible Opacity determination to confirm opacity limits in Section II.A.6 (ARM 17.8.749).

4. The Department of Environmental Quality (DEQ) may require further testing (ARM 17.8.105).

C. Operational Reporting Requirements

1. High Plains shall supply DEQ with annual production information for all emission points, as required by DEQ in the annual emission inventory request. The request will include, but is not limited to, all sources of emissions identified in the emission inventory contained in the permit analysis.

Production information shall be gathered on a calendar-year basis and submitted to DEQ by the date required in the emission inventory request. Information shall be in the units required by DEQ. This information may be used to calculate operating fees, based on actual emissions from the facility, and/or to verify compliance with permit limitations (ARM 17.8.505). High Plains shall submit the following information annually to DEQ by March 1 of each year; the information may be submitted along with the annual emission inventory (ARM 17.8.505).

- a. temperature of the enclosed flare
 - b. weekly opacity observations
 - c. EPA Method 9 Test results
2. High Plains shall notify DEQ of any construction or improvement project conducted, pursuant to ARM 17.8.745, that would include the addition of a new emissions unit, change in control equipment, stack height, stack diameter, stack flow, stack gas temperature, source location, or fuel specifications, or would result in an increase in source capacity above its permitted operation.

The notice must be submitted to the DEQ, in writing, 10 days prior to startup or use of the proposed de minimis change, or as soon as reasonably practicable in the event of an unanticipated circumstance causing the de minimis change and must include the information requested in ARM 17.8.745(l)(d) (ARM 17.8.745).

3. All records compiled in accordance with this permit must be maintained by High Plains as a permanent business record for at least 5 years following the date of the measurement, must be available at the plant site for inspection by DEQ, and must be submitted to DEQ upon request. These records may be stored at a location other than the plant site upon approval by DEQ (ARM 17.8.749).

D. Notifications

High Plains shall provide DEQ with written notification of the start-up date of the enclosed flare within 15 working days of the start-up date (ARM 17.8.749).

SECTION III: General Conditions

- A. Inspection – High Plains shall allow DEQ’s representatives access to the source at all reasonable times for the purpose of making inspections or surveys, collecting samples, obtaining data, auditing any monitoring equipment such as Continuous Emission Monitoring Systems (CEMS) or Continuous Emission Rate Monitoring Systems (CERMS), or observing any monitoring or testing, and otherwise conducting all necessary functions related to this permit.
- B. Waiver – The permit and the terms, conditions, and matters stated herein shall be deemed accepted if High Plains fails to appeal as indicated below.
- C. Compliance with Statutes and Regulations – Nothing in this permit shall be construed as relieving High Plains of the responsibility for complying with any applicable federal or Montana statute, rule, or standard, except as specifically provided in ARM 17.8.740, *et seq.* (ARM 17.8.756).
- D. Enforcement – Violations of limitations, conditions and requirements contained herein may constitute grounds for permit revocation, penalties, or other enforcement action as specified in Section 75-2-401, *et seq.*, MCA.
- E. Appeals – Any person or persons jointly or severally adversely affected by DEQ’s decision may request, within 15 days after DEQ renders its decision, upon affidavit setting forth the grounds therefor, a hearing before the Board of Environmental Review (Board). A hearing shall be held under the provisions of the Montana Administrative Procedures Act.

The filing of a request for a hearing does not stay DEQ’s decision, unless the Board issues a stay upon receipt of a petition and a finding that a stay is appropriate under Section 75-2-211(11)(b), MCA. The issuance of a stay on a permit by the Board postpones the effective date of DEQ’s decision until conclusion of the hearing and issuance of a final decision by the Board. If a stay is not issued by the Board, DEQ’s decision on the application is final 16 days after DEQ’s decision is made.

- F. Permit Inspection – As required by ARM 17.8.755, Inspection of Permit, a copy of the air quality permit shall be made available for inspection by DEQ at the location of the source.
- G. Permit Fee – Pursuant to Section 75-2-220, MCA, failure to pay the annual operation fee by High Plains may be grounds for revocation of this permit, as required by that section and rules adopted thereunder by the Board.
- H. Duration of Permit – Construction or installation must begin, or contractual obligations entered into that would constitute substantial loss within 3 years of permit issuance and proceed with due diligence until the project is complete or the permit shall expire (ARM 17.8.762).

Montana Air Quality Permit Analysis
Montana Waste Systems, Inc.
High Plains Sanitary Landfill and Recycling Center
MAQP #2981-00

I. Introduction/Process Description

Montana Waste Systems, Inc. - High Plains Sanitary Landfill and Recycling Center (High Plains) proposes to install and operate a enclosed flare. The legal address of the facility Section 35, Township 22 North and Range 4 West, Latitude 47.62191, Longitude -111.184161. The physical address is 142 Powerline Rd, Floweree, MT.

A. Permitted Equipment

High Plains proposes to install and operate a landfill gas processing system for the purpose of collecting, refining, and injecting renewable natural gas from an existing landfill into an existing natural gas pipeline. Proposed equipment include:

- Enclosed flare
- Associated equipment

B. Source Description

The High Plains Sanitary Landfill and Recycling Center receives and landfills municipal solid waste (MSW). The facility is permitted under Montana Solid Waste License #225. In addition to MSW, the facility is allowed to receive and landfill asbestos, petroleum-contaminated soils, construction and demolition debris, industrial waste, commercial waste and other non-hazardous waste streams.

C. Additional Information (Changes to an existing permit)

Additional information, such as applicable rules and regulations, Best Available Control Technology (BACT)/Reasonably Available Control Technology (RACT) determinations, air quality impacts, and environmental assessments, is included in the analysis associated with each change to the permit.

II. Applicable Rules and Regulations

The following are partial explanations of some applicable rules and regulations that apply to the facility. The complete rules are stated in the Administrative Rules of Montana (ARM) and are available, upon request, from DEQ of Environmental Quality (Department). Upon request, DEQ will provide references for location of complete copies of all applicable rules and regulations or copies where appropriate.

A. ARM 17.8, Subchapter 1 – General Provisions, including but not limited to:

1. ARM 17.8.101 Definitions. This rule includes a list of applicable definitions used in this chapter, unless indicated otherwise in a specific subchapter.

2. ARM 17.8.105 Testing Requirements. Any person or persons responsible for the emission of any air contaminant into the outdoor atmosphere shall, upon written request of DEQ, provide the facilities and necessary equipment (including instruments and sensing devices) and shall conduct tests, emission or ambient, for such periods of time as may be necessary using methods approved by DEQ.
3. ARM 17.8.106 Source Testing Protocol. The requirements of this rule apply to any emission source testing conducted by DEQ, any source or other entity as required by any rule in this chapter, or any permit or order issued pursuant to this chapter, or the provisions of the Clean Air Act of Montana, 75-2-101, *et seq.*, Montana Code Annotated (MCA).

High Plains shall comply with the requirements contained in the Montana Source Test Protocol and Procedures Manual, including, but not limited to, using the proper test methods and supplying the required reports. A copy of the Montana Source Test Protocol and Procedures Manual is available from DEQ upon request.

4. ARM 17.8.110 Malfunctions. (2) DEQ must be notified promptly by telephone whenever a malfunction occurs that can be expected to create emissions in excess of any applicable emission limitation or to continue for a period greater than 4 hours.
5. ARM 17.8.111 Circumvention. (1) No person shall cause or permit the installation or use of any device or any means that, without resulting in reduction of the total amount of air contaminant emitted, conceals or dilutes an emission of air contaminant that would otherwise violate an air pollution control regulation. (2) No equipment that may produce emissions shall be operated or maintained in such a manner as to create a public nuisance.

B. ARM 17.8, Subchapter 2 – Ambient Air Quality, including, but not limited to the following:

1. ARM 17.8.204 Ambient Air Monitoring
2. ARM 17.8.210 Ambient Air Quality Standards for Sulfur Dioxide
3. ARM 17.8.211 Ambient Air Quality Standards for Nitrogen Dioxide
4. ARM 17.8.212 Ambient Air Quality Standards for Carbon Monoxide
5. ARM 17.8.213 Ambient Air Quality Standard for Ozone
6. ARM 17.8.214 Ambient Air Quality Standard for Hydrogen Sulfide
7. ARM 17.8.220 Ambient Air Quality Standard for Settled Particulate Matter
8. ARM 17.8.221 Ambient Air Quality Standard for Visibility
9. ARM 17.8.222 Ambient Air Quality Standard for Lead
10. ARM 17.8.223 Ambient Air Quality Standard for PM₁₀
11. ARM 17.8.230 Fluoride in Forage

High Plains must maintain compliance with the applicable ambient air quality standards.

C. ARM 17.8, Subchapter 3 – Emission Standards, including, but not limited to:

1. ARM 17.8.304 Visible Air Contaminants. This rule requires that no person may cause or authorize emissions to be discharged into the outdoor atmosphere from any source installed after November 23, 1968, that exhibit an opacity of 20% or greater averaged over 6 consecutive minutes.
2. ARM 17.8.308 Particulate Matter, Airborne. (1) This rule requires an opacity limitation of less than 20% for all fugitive emission sources and that reasonable precautions be taken to control emissions of airborne particulate matter. (2) Under this rule, High Plains shall not cause or authorize the use of any street, road, or parking lot without taking reasonable precautions to control emissions of airborne particulate matter.
3. ARM 17.8.309 Particulate Matter, Fuel Burning Equipment. This rule requires that no person shall cause, allow, or permit to be discharged into the atmosphere particulate matter caused by the combustion of fuel in excess of the amount determined by this rule.
4. ARM 17.8.310 Particulate Matter, Industrial Process. This rule requires that no person shall cause, allow, or permit to be discharged into the atmosphere particulate matter in excess of the amount set forth in this rule.
5. ARM 17.8.316 Incinerators. This rule requires that no person may cause or authorize emissions to be discharged into the outdoor atmosphere from any incinerator, particulate matter in excess of 0.10 grains per standard cubic foot of dry flue gas, adjusted to 12% carbon dioxide and calculated as if no auxiliary fuel had been used. Further, no person shall cause or authorize to be discharged into the outdoor atmosphere from any incinerator emissions that exhibit an opacity of 10% or greater averaged over 6 consecutive minutes.
6. ARM 17.8.322 Sulfur Oxide Emissions--Sulfur in Fuel. This rule requires that no person shall burn liquid, solid, or gaseous fuel in excess of the amount set forth in this rule.
7. ARM 17.8.324 Hydrocarbon Emissions--Petroleum Products. (3) No person shall load or permit the loading of gasoline into any stationary tank with a capacity of 250 gallons or more from any tank truck or trailer, except through a permanent submerged fill pipe, unless such tank is equipped with a vapor loss control device as described in (1) of this rule.
8. ARM 17.8.340 Standard of Performance for New Stationary Sources and Emission Guidelines for Existing Sources. This rule incorporates, by reference, 40 CFR Part 60, Standards of Performance for New Stationary Sources (NSPS). High Plains is considered an NSPS affected facility under 40 CFR Part 60 and is subject to the requirements of the following subparts.
 - a. 40 CFR 60, Subpart A – General Provisions apply to all equipment or facilities subject to an NSPS Subpart as listed below:

- b. 40 CFR 60, Subpart Cf – Emissions Guidelines and Compliance Times for Municipal Solid Waste Landfills. The designated facility to which this subpart applies is each existing municipal solid waste landfill for which construction, reconstruction or modification was commenced before July 17, 2014. Because High Plains first started operation in 1980 and has a capacity greater than 2.5 million megagrams, this subpart is applicable.
 - 9. ARM 17.8.341 Emission Standards for Hazardous Air Pollutants. This source shall comply with the standards and provisions of 40 CFR Part 61, as appropriate.
 - a. 40 CFR 61, Subpart A – General Provisions apply to all equipment or facilities subject to a NESHAP Subpart as listed below:
 - b. 40 CFR 61, Subpart M – National Emissions Standards for Asbestos. This subpart applies to High Plains because are an active waste disposal that accepts asbestos containing waste material.
 - c. 40 CFR 63, Subpart AAAA – National Emission Standards for Hazardous Air Pollutants: Municipal Solid Waste Landfills. This subpart applies to landfills which are, or are co-located with, a major source of hazardous air pollutant, or, is an area source with a design capacity greater than 2.5 million megagrams and 2.5 million cubic meters and has uncontrolled emissions equal to or greater than 50 megagrams per year of non-methane organic compounds. The High Plains has a capacity greater than 2.5 million megagrams, therefore, this subpart applies.
- D. ARM 17.8, Subchapter 5 – Air Quality Permit Application, Operation, and Open Burning Fees, including, but not limited to:
- 1. ARM 17.8.504 Air Quality Permit Application Fees. This rule requires that an applicant submit an air quality permit application fee concurrent with the submittal of an air quality permit application. A permit application is incomplete until the proper application fee is paid to DEQ. High Plains submitted the appropriate permit application fee for the current permit action.
 - 2. ARM 17.8.505 Air Quality Operation Fees. An annual air quality operation fee must, as a condition of continued operation, be submitted to DEQ by each source of air contaminants holding an air quality permit (excluding an open burning permit) issued by DEQ. The air quality operation fee is based on the actual or estimated actual amount of air pollutants emitted during the previous calendar year.

An air quality operation fee is separate and distinct from an air quality permit application fee. The annual assessment and collection of the air quality operation fee, described above, shall take place on a calendar-year basis. DEQ may insert into any final permit issued after the effective date of these rules, such conditions as may be necessary to require the payment of an air quality operation fee on a calendar-year basis, including provisions that prorate the required fee amount.
- E. ARM 17.8, Subchapter 7 – Permit, Construction, and Operation of Air Contaminant Sources, including, but not limited to:

1. ARM 17.8.740 Definitions. This rule is a list of applicable definitions used in this chapter, unless indicated otherwise in a specific subchapter.
2. ARM 17.8.743 Montana Air Quality Permits--When Required. This rule requires a person to obtain an air quality permit or permit modification to construct, modify, or use any air contaminant sources that have the potential to emit (PTE) greater than 25 tons per year of any pollutant. High Plains does not have a PTE greater than 25 tons per year for any criteria pollutant, however, the enclosed flare is considered an incinerator. Therefore, an air quality permit is required.
3. ARM 17.8.744 Montana Air Quality Permits--General Exclusions. This rule identifies the activities that are not subject to the Montana Air Quality Permit program.
4. ARM 17.8.745 Montana Air Quality Permits--Exclusion for De Minimis Changes. This rule identifies the de minimis changes at permitted facilities that do not require a permit under the Montana Air Quality Permit Program.
5. ARM 17.8.748 New or Modified Emitting Units--Permit Application Requirements.
(1) This rule requires that a permit application be submitted prior to installation, modification, or use of a source. High Plains submitted the required permit application for the current permit action. (7) This rule requires that the applicant notify the public by means of legal publication in a newspaper of general circulation in the area affected by the application for a permit.

High Plains submitted an affidavit of publication of public notice for the June 7, 2023, issues of *The Great Falls Tribune*, a newspaper of general circulation in the City of Great Falls in Cascade County, as proof of compliance with the public notice requirements.

6. ARM 17.8.749 Conditions for Issuance or Denial of Permit. This rule requires that the permits issued by DEQ must authorize the construction and operation of the facility or emitting unit subject to the conditions in the permit and the requirements of this subchapter. This rule also requires that the permit must contain any conditions necessary to assure compliance with the Federal Clean Air Act (FCAA), the Clean Air Act of Montana, and rules adopted under those acts.
7. ARM 17.8.752 Emission Control Requirements. This rule requires a source to install the maximum air pollution control capability that is technically practicable and economically feasible, except that BACT shall be utilized. The required BACT analysis is included in Section III of this permit analysis.
8. ARM 17.8.755 Inspection of Permit. This rule requires that air quality permits shall be made available for inspection by DEQ at the location of the source.
9. ARM 17.8.756 Compliance with Other Requirements. This rule states that nothing in the permit shall be construed as relieving High Plains of the responsibility for complying with any applicable federal or Montana statute, rule, or standard, except as specifically provided in ARM 17.8.740, *et seq.*

10. ARM 17.8.759 Review of Permit Applications. This rule describes DEQ's responsibilities for processing permit applications and making permit decisions on those permit applications that do not require the preparation of an environmental impact statement.
 11. ARM 17.8.760 Additional Review of Permit Applications. This rule describes DEQ's responsibilities for processing permit applications and making permit decisions on those applications that require an environmental impact statement.
 12. ARM 17.8.762 Duration of Permit. An air quality permit shall be valid until revoked or modified, as provided in this subchapter, except that a permit issued prior to construction of a new or modified source may contain a condition providing that the permit will expire unless construction is commenced within the time specified in the permit, which in no event may be less than 1 year after the permit is issued.
 13. ARM 17.8.763 Revocation of Permit. An air quality permit may be revoked upon written request of the permittee, or for violations of any requirement of the Clean Air Act of Montana, rules adopted under the Clean Air Act of Montana, the FCAA, rules adopted under the FCAA, or any applicable requirement contained in the Montana State Implementation Plan (SIP).
 14. ARM 17.8.764 Administrative Amendment to Permit. An air quality permit may be amended for changes in any applicable rules and standards adopted by the Board of Environmental Review (Board) or changed conditions of operation at a source or stack that do not result in an increase of emissions as a result of those changed conditions. The owner or operator of a facility may not increase the facility's emissions beyond permit limits unless the increase meets the criteria in ARM 17.8.745 for a de minimis change not requiring a permit, or unless the owner or operator applies for and receives another permit in accordance with ARM 17.8.748, ARM 17.8.749, ARM 17.8.752, ARM 17.8.755, and ARM 17.8.756, and with all applicable requirements in ARM Title 17, Chapter 8, Subchapters 8, 9, and 10.
 15. ARM 17.8.765 Transfer of Permit. This rule states that an air quality permit may be transferred from one person to another if written notice of intent to transfer, including the names of the transferor and the transferee, is sent to DEQ.
 16. ARM 17.8.770 Additional Requirements for Incinerators. This rule specifies the additional information that must be submitted to DEQ for incineration facilities subject to 75-2-215, Montana Code Annotated (MCA).
 17. ARM 17.8.771 Mercury Emission Standards for Mercury-Emitting Generating Units. This rule identifies mercury emission limitation requirements, mercury control strategy requirements, and application requirements for mercury-emitting generating units.
- F. ARM 17.8, Subchapter 8 – Prevention of Significant Deterioration of Air Quality, including, but not limited to:
1. ARM 17.8.801 Definitions. This rule is a list of applicable definitions used in this subchapter.

2. ARM 17.8.818 Review of Major Stationary Sources and Major Modifications--Source Applicability and Exemptions. The requirements contained in ARM 17.8.819 through ARM 17.8.827 shall apply to any major stationary source and any major modification, with respect to each pollutant subject to regulation under the FCAA that it would emit, except as this subchapter would otherwise allow.

This facility is not a major stationary source because this facility is not a listed source and the facility's PTE is below 250 tons per year of any pollutant (excluding fugitive emissions).

- G. ARM 17.8, Subchapter 12 – Operating Permit Program Applicability, including, but not limited to:

1. ARM 17.8.1201 Definitions. (23) Major Source under Section 7412 of the FCAA is defined as any source having:
 - a. PTE > 100 tons/year of any pollutant;
 - b. PTE > 10 tons/year of any one hazardous air pollutant (HAP), PTE > 25 tons/year of a combination of all HAPs, or lesser quantity as DEQ may establish by rule; or
 - c. PTE > 70 tons/year of particulate matter with an aerodynamic diameter of 10 microns or less (PM₁₀) in a serious PM₁₀ nonattainment area.
2. ARM 17.8.1204 Air Quality Operating Permit Program. (1) Title V of the FCAA amendments of 1990 requires that all sources, as defined in ARM 17.8.1204(1), obtain a Title V Operating Permit. In reviewing and issuing MAQP #2981-00 for High Plains, the following conclusions were made:
 - a. The facility's PTE is less than 100 tons/year for any pollutant.
 - b. The facility's PTE is less than 10 tons/year for any one HAP and less than 25 tons/year for all HAPs.
 - c. This source is not located in a serious PM₁₀ nonattainment area.
 - d. This facility is subject to NSPS (40 CFR 60, Subparts A and Cf).
 - e. This facility is not subject to any current NESHAP standards (40 CFR 61, Subpart M, 40 CFR 62, OOO, and 40 CFR 63, Subpart A and AAAA).
 - f. This source is not a Title IV affected source, or a solid waste combustion unit.
 - g. This source is an EPA designated Title V source.
 - h. As allowed by ARM 17.8.1204(3), DEQ may exempt a source from the requirement to obtain an air quality operating permit by establishing federally enforceable limitations which limit that source's potential to emit.

- i. In applying for an exemption under this section, the owner or operator of the source shall certify to DEQ that the source's potential to emit, does not require the source to obtain an air quality operating permit.
- ii. Any source that obtains a federally enforceable limit on potential to emit shall annually certify that its actual emissions are less than those that would require the source to obtain an air quality operating permit.

High Plains is a Title V source and has a current Title V Operating Permit, #OP2981-07.

III. BACT Determination

A BACT determination is required for each new or modified source. High Plains shall install on the new or modified source the maximum air pollution control capability, which is technically practicable and economically feasible, except that BACT shall be utilized.

A BACT analysis was submitted by High Plains in permit application #2981-00, addressing some available methods of controlling emissions from landfill gases. DEQ reviewed these methods, as well as previous BACT determinations. The following control options have been reviewed by DEQ in order to make the following BACT determination.

Control of Volatile Organic Compounds

Enclosed Flare - A enclosed flare converts VOCs to the oxidation byproducts of CO₂ and water in a combustion chamber. Since the inlet waste gas stream temperature is generally much lower than that required for combustion, energy must be supplied to the enclosed flare to raise the waste gas temperature. Auxiliary fuel, such as natural gas, is used to ensure complete combustion of waste gases. Enclosed flares are typically designed to meet a minimum of 98% VOC destruction efficiency.

Control of PM_{Tot}, PM₁₀, & PM_{2.5}

Total Particulate Matter (PM_{Tot}), Particulate Matter with an aerodynamic diameter of 10 microns or less (PM₁₀), PM with an aerodynamic diameter of 2.5 microns or less that are filterable and condensable (PM_{2.5Fil} and PM_{2.5Cond}), and Sulphur Dioxide(SO₂) are also generated as byproducts of combustion in the proposed enclosed flare natural gas burners. The following control technologies are identified for control of PM_{Tot}, PM₁₀ and PM_{2.5}, and SO₂ emissions from similar natural gas combustion sources.

Use of Pipeline Quality Natural Gas – Limiting combustion in the enclosed flare to only pipeline quality natural ensures the fuel is free of impurities that can cause the formation of excess air pollutants.

Good Combustion Practices – Good combustion practices refer to the operation of the proposed thermal oxidizers at high combustion efficiency, which reduces the products of incomplete combustion. The thermal oxidizers are designed to achieve maximum combustion efficiency. The manufacturer has provided operation and maintenance manuals that detail the required methods to achieve the highest levels of combustion efficiency. High Plains will operate and maintain the thermal oxidizers in accordance with the manufacturer provided instructions and best industry practices.

Fugitive Emissions from Road Traffic

Two types of emission controls are readily available and used for dust suppression of fugitive emissions at the site. These two control methods are water and/or chemical dust suppressant. Chemical dust suppressant could be used on the area surrounding the crushing/screening operation, and for emissions from the crushing/screening operation itself. However, because water is more readily available, is more cost effective, is often equally effective as chemical dust suppressant, and is more environmentally friendly, water has been identified as the most appropriate method of pollution control of particulate emissions.

Conclusion - High Plains has proposed the use of enclosed flare as BACT for controlling and reducing emission from the landfill.

DEQ has reviewed the selected control options and compared them to other recently permitted, similar sources and concur that the enclosed flare along with good combustion practices combined with pipeline quality natural gas for the control of VOCs and HAPs and the use of water/chemical dust suppressions for fugitive emissions from road traffic constitutes BACT.

IV. Emission Inventory

CONTROLLED Emission Source	tons/year							
	PM	PM₁₀	PM_{2.5}	NO_x	CO	VOC	SO₂	HAPs
Flare	0.22	0.22	0.22	0.22	23.91	0.22	8.58	1.14
Natural Gas Emissions	7.60E-06	1.48E-05	1.48E-05	4.30E-06	7.82E-05	1.07E-05	1.17E-06	2.15E-05
Haul Roads	34.720	5.395	0.935	--	--	--	--	--
Total Emissions	34.94	5.61	1.15	0.22	23.91	0.22	8.58	1.14

Notes:

1. Values in table reflect "controlled" cells from subsequent worksheets
2. The Flare calculations represent landfill gas emissions with no refinement
3. Vehicle Miles Traveled is based on 2040 hours per year

Enclosed Flare

Hours of Operation = 8,760.00 hours 8760 **hours**
 pounds per ton = 0.000500 lb/ton 0.0005 **lb/ton**

PM Emissions:

PM Emissions = 0.219 ton/yr (AP-42, Table 2.4-4) 0.22 **ton/yr**

PM-10 Emissions:

Emission Factor = 0.05 lb/hr BACT 0.05 **lb/hr**
 Calculation: ((8,760.00 hours) * (0.05 lb/hr) * (ton/2000 lb) = 0.219 ton/yr 0.22 **ton/yr**

PM2.5 Emissions

Emission Factor = 0.05 lb/hr BACT 0.05 **lb/hr**

Calculation: $((8,760.00 \text{ hours}) * (0.05 \text{ lb/hr}) * (\text{ton}/2000 \text{ lb}) = 0.219 \text{ ton/yr}$	0.22	ton/yr
NOx Emissions:		
Emission Factor = 0.05 lb/hr BACT	0.05	lb/hr
Calculation: $((0.05 \text{ hours}) * (0.05 \text{ lb/hr}) * (\text{ton}/2000 \text{ lb}) = 0.219 \text{ ton/yr}$	0.22	ton/yr
CO Emissions:		
Emission Factor = 5.46 lb/hr BACT	5.46	lb/hr
Calculation: $((8,760.00 \text{ hours}) * (5.46 \text{ lb/hr}) * (\text{ton}/2000 \text{ lb}) = 23.915 \text{ ton/yr}$	23.91	ton/yr
VOC Emissions:		
Emission Factor = 0.05 lb/hr BACT	0.050	lb/hr
Calculation: $((8,760 \text{ hours}) * (0.05 \text{ lb/hr}) * (\text{ton}/2000 \text{ lb}) = 0.219 \text{ ton/yr}$	0.22	ton/yr
SOx Emissions:		
Emission Factor = 1.96 lb/hr BACT	1.96	lb/hr
Calculation: $((0.05 \text{ hours}) * (0.05 \text{ lb/hr}) * (\text{ton}/2000 \text{ lb}) = 8.585 \text{ ton/yr}$	8.58	ton/yr
HAPs Emissions:		
Emission Factor = 0.26 lb/hr BACT	0.26	lb/hr
Calculation: $((8,760 \text{ hours}) * (0.2600 \text{ lb/hr}) * (\text{ton}/2000 \text{ lb}) = 1.139 \text{ ton/yr}$	1.14	ton/yr

Natural Gas Emissions - Flare

Hours of Operation = 8,760.00 hours	8760
pounds per ton = 0.000500 lb/ton	0.0005
British thermal units per hour	455
British thermal units per scf	0.0010
PM Emissions:	
PM Emissions = 0.000 lb/mmscf (Assume all PM < 1.0 um)	0.0000076
PM-10 Emissions:	
Emission Factor = 0.0000076 lb//scf (AP-42, Table 2.4-4)	0.0000076
Calculation: $((0.0000076 \text{ lb//scf}) * (0.0010 \text{ Btu/scf}) * (455 \text{ Btu/hr}) * (8,760 \text{ hours}) * (\text{ton}/2000 \text{ lb}) = 0.000 \text{ ton/yr}$	1.48491E-05
PM2.5 Emissions	
Emission Factor = 0.0000076 lb/hr (AP-42, Table 2.4-4)	0.0000076
Calculation: $((0.0000076 \text{ lb//scf}) * (0.0010 \text{ Btu/scf}) * (455 \text{ Btu/hr}) * (8,760 \text{ hours}) * (\text{ton}/2000 \text{ lb}) = 0.000 \text{ ton/yr}$	1.48491E-05
NOx Emissions:	
Emission Factor = 0.0000022 lb/hr Vendor Guarantee	0.0000022
Calculation: $((0.0000022 \text{ lb/hr}) * (0.0010 \text{ Btu/scf}) * (455 \text{ Btu/hr}) * (8,760 \text{ hours}) * (\text{ton}/2000 \text{ lb}) = 0.000 \text{ ton/yr}$	4.29841E-06
CO Emissions:	
Emission Factor = 0.00004 lb/hr Vendor Guarantee	0.00004
Calculation: $((0.000040 \text{ lb/hr}) * (0.0010 \text{ Btu/scf}) * (455 \text{ Btu/hr}) * (8,760 \text{ hours}) * (\text{ton}/2000 \text{ lb}) = 0.000 \text{ ton/yr}$	7.81529E-05
VOC Emissions:	
Emission Factor = 0.0000055 lb/hr Vendor Guarantee	0.0000055
Calculation: $((0.0000055 \text{ lb/hr}) * (0.0010 \text{ Btu/scf}) * (455 \text{ Btu/hr}) * (8,760 \text{ hours}) * (\text{ton}/2000 \text{ lb}) = 0.000 \text{ ton/yr}$	1.0746E-05
SOx Emissions:	

Emission Factor = 0.0000006 lb/hr Mass Balance/process design 0.000001
 Calculation: ((0.0000006 lb/hr) * (0.0010 Btu/scf) * (455 Btu/hr) * (8,760 hours) * (ton/2000 lb) = 0.000 ton/yr 1.17229E-06

HAPs Emissions:

Emission Factor = 0.000011 lb/hr Sampling Data 1.10E-05
 Calculation: ((0.0000110 lb/hr) * (0.0010 Btu/scf) * (455 Btu/hr) * (8,760 hours) * (ton/2000 lb) = 0.000 ton/yr 2.14921E-05

Haul Roads

Vehicle Miles Traveled (VMT) per Day = 166 VMT/day (Estimate)	166	VMT/day
VMT per hour = (166 VMT/day) * (day/24 hrs) = 6.92 VMT/hr	6.92	VMT/hr
Hours of Operation = 2,080 hrs/yr	2,080	hrs/yr

PM Emissions:

Predictive equation for emission factor for unpaved roads at industrial sites provided per AP 42, Ch. 13.2.2, 11/06.

Emission Factor = $k * (s / 12)^a * (W / 3)^b = 9.65 \text{ lb/VMT}$ 9.65 lb/VMT

Where: k = constant = 5.42 lbs/VMT (Value for PM30/TSP, AP 42, Table 13.2.2-2, 11/06) 5.42 lbs/VMT
 s = surface silt content = 4.8 % (Mean value, sand/gravel processing, material storage area, AP 42, Table 13.2.2-1, 11/06) 4.8 %
 W = mean vehicle weight = 45 tons (1994 average loaded/unloaded or a 40 ton truck) 45 tons
 a = constant = 0.7 (Value for PM30/TSP, AP 42, Table 13.2.2-2, 11/06) 0.7
 b = constant = 0.45 (Value for PM30/TSP, AP 42, Table 13.2.2-2, 11/06) 0.45

Control Efficiency = 50% (Water spray or chemical dust suppressant) 50 %
 Calculation: (2080 hrs/yr) * (6.92 VMT/hr) * (9.65 lb/VMT) * (ton/2000 lb) = 69.44 tons/yr (Uncontrolled Emissions) 69.4 tons/yr
 Calculation: (2080 hrs/yr) * (6.92 VMT/hr) * (9.65 lb/VMT) * (ton/2000 lb) * (1-50/100) = 34.72 tons/yr (Apply 50% control efficiency) 34.7 tons/yr

PM10 Emissions:

Predictive equation for emission factor for unpaved roads at industrial sites provided per AP 42, Ch. 13.2.2, 11/06.

Emission Factor = $k * (s / 12)^a * (W / 3)^b = 1.50 \text{ lb/VMT}$ 1.50 lb/VMT

Where: k = constant = 1.46 lbs/VMT (Value for PM10, AP 42, Table 13.2.2-2, 11/06) 1.46 lbs/VMT
 s = surface silt content = 4.8 % (Mean value, sand/gravel processing, material storage area, AP 42, Table 13.2.2-1, 11/06) 4.8 %
 W = mean vehicle weight = 45 tons (1994 average loaded/unloaded or a 40 ton truck) 45 tons
 a = constant = 0.9 (Value for PM10, AP 42, Table 13.2.2-2, 11/06) 0.9
 b = constant = 0.45 (Value for PM10, AP 42, Table 13.2.2-2, 11/06) 0.45

Control Efficiency = 50% (Water spray or chemical dust suppressant) 50 %
 Calculation: (2080 hrs/yr) * (6.92 VMT/hr) * (1.50 lb/VMT) * (ton/2000 lb) = 10.79 tons/yr (Uncontrolled Emissions) 10.7 tons/yr
 Calculation: (2080 hrs/yr) * (6.92 VMT/hr) * (1.50 lb/VMT) * (ton/2000 lb) * (1-50/100) = 5.40 tons/yr (Apply 50% control efficiency) 5.40 tons/yr

PM2.5 Emissions

Predictive equation for emission factor for unpaved roads at industrial sites provided per AP 42, Ch. 13.2.2, 11/06.

Emission Factor = $k * (s / 12)^a * (W / 3)^b = 0.26 \text{ lb/VMT}$ 0.26 lb/VMT

Where: k = constant = 0.146 lbs/VMT (Value for PM2.5, AP 42, Table 13.2.2-2, 11/06) 0.146 lbs/VMT
 s = surface silt content = 4.8 % (Mean value, sand/gravel processing, material storage area, AP 42, Table 13.2.2-1, 11/06) 4.8 %
 W = mean vehicle weight = 45 tons (1994 average loaded/unloaded or a 40 ton truck) 45 tons
 a = constant = 0.7 (Value for PM2.5, AP 42, Table 13.2.2-2, 11/06) 0.7
 b = constant = 0.45 (Value for PM2.5, AP 42, Table 13.2.2-2, 11/06) 0.45

Control Efficiency = 50% (Water spray or chemical dust suppressant) 50 %
 Calculation: (2080 hrs/yr) * (6.92 VMT/hr) * (0.26 lb/VMT) * (ton/2000 lb) = 1.87 tons/yr (Uncontrolled Emissions) 1.87 tons/yr
 Calculation: (2080 hrs/yr) * (6.92 VMT/hr) * (0.26 lb/VMT) * (ton/2000 lb) * (1-50/100) = 0.94 tons/yr (Apply 50% control efficiency) 0.94 tons/yr

V. Existing Air Quality

The High Plains facility is located within an area of Cascade County that is designated as an Unclassifiable/Attainment area for the National Ambient Air Quality Standards (NAAQS) for all criteria pollutants.

The limitations and conditions in MAQP #2981-00 ensure the facility would not cause or contribute to a violation of the National Ambient Air Quality Standards (NAAQS).

VI. Ambient Air Impact Analysis

DEQ determined, based on the information provided by High Plains, and the attached Environmental Assessment, that the impacts from this permitting action will be minor. DEQ believes it will not cause or contribute to a violation of any ambient air quality standard.

VII. Health Risk Assessment

A health risk assessment was conducted using AERSCREEN, an EPA approved screening model using indicated inputs for landfill gas analysis to determine if the proposed enclosed flare comply with the negligible risk requirement of MCA 75-2-215. The emission inventory did not contain sufficient quantities of any pollutant on DEQ's list of pollutants for which non-inhalation impacts must be considered; therefore, DEQ determined that inhalation risk was the only necessary pathway to consider. Only those hazardous air pollutants for which there were established emission factors were considered in the emission inventory.

DEQ determined that the risks estimated in the risk assessment for the enclosed flare are in compliance with the requirement to demonstrate negligible risk to human health and the environment. As documented in the health risk assessment, and in accordance with the negligible risk requirement, no single HAP concentration results in Cancer Risk greater than 1.00E-06 and the sum of all HAPs results in a Cancer Risk of less than 1.00E-05. Further, the sum of Chronic Noncancer Reference Exposure Level (CNCREL) hazard quotient is less than 1.0 as required to demonstrate compliance with the negligible risk requirement.

HUMAN HEALTH RISK ASSESSMENT
HIGH PLAINS SANITARY LANDFILL AND RECYCLING CENTER - CASCADE COUNTY, MONTANA

Speciated LFG Compounds	Enclosed Flare Emissions	Modeled Annual Ambient Concentration	Annual Concentration for Cancer Risk	Below limits?	Annual Concentration for Non Cancer Risk (Chronic)	Below limits?	Annual Concentration for Non Cancer Risk (Acute)	Below limits?	Carcinogenic Risk from Inhalation Exposure	Excess Lifetime Cancer Risk	Reference Concentration for Inhalation Exposure (RFC)	Noncancer Hazard Quotient
	lb/hr	$\mu\text{g}/\text{m}^3$							$(\mu\text{g}/\text{m}^3)^{-1}$		$\mu\text{g}/\text{m}^3$	
1,1,1 - Trichloroethane (methyl chloroform)	1.96E-04	3.91E-05			3.20E+00	Yes	1.90E+03	Yes			9.00E+03	4.34E-09
1,1,2,2 - Tetrachloroethane	5.66E-04	1.13E-04	1.72E-03	Yes								
1,1 - Dichloroethane (ethylidene dichloride)	7.28E-04	1.45E-04										
1,1 - Dichloroethene (vinylidene chloride)	5.94E-05	1.18E-05	2.00E-03	Yes	3.20E-01	Yes					2.00E+02	5.91E-08
1,2 - Dichloroethane (ethylene dichloride)	1.24E-04	2.48E-05	3.85E-03	Yes	9.50E-01	Yes			2.60E-05	6.44E-10		
1,2 - Dichloropropane (propylene dichloride)	6.23E-05	1.24E-05			4.00E-02	Yes					4.00E+00	3.10E-06
Acrylonitrile	1.02E-03	2.04E-04	1.47E-03	Yes	2.00E-02	Yes			6.80E-05	1.39E-08	2.00E+00	1.02E-04
Benzene	4.55E-04	9.06E-05	1.20E-02	Yes	7.10E-01	Yes			7.80E-06	7.06E-10	3.00E+01	3.02E-06
Carbon Disulfide	1.35E-04	2.69E-05			7.00E+00	Yes					7.00E+02	3.85E-08
Carbon Tetrachloride	1.88E-06	3.75E-07	6.67E-03	Yes	2.40E-02	Yes	1.90E+00	Yes	6.00E-06	2.25E-12	1.00E+02	3.75E-09
Carbonyl Sulfide	9.02E-05	1.80E-05										
Chlorobenzene	8.62E-05	1.72E-05			7.00E-01	Yes						
Chloroethane (ethyl chloride)	2.57E-04	5.12E-05			1.00E+02	Yes					1.00E+04	5.12E-09
Chloroform	1.10E-05	2.19E-06	4.35E-03	Yes	3.50E-01	Yes						
Chloromethane (methyl chloride)	1.86E-04	3.70E-05									9.00E+01	4.11E-07
Dichlorodifluoromethane	5.93E-03	1.18E-03										
Dichloromethane (methylene chloride)	3.64E-03	7.26E-04	2.13E-01	Yes	3.00E+01	Yes	3.50E+01	Yes	1.00E-08	7.26E-12	6.00E+02	1.21E-06
Ethylbenzene	1.50E-03	2.98E-04			1.00E+01	Yes					1.00E+03	2.98E-07
Ethylene Dibromide	5.75E-07	1.15E-07	4.55E-04	Yes	4.60E-02	Yes			6.00E-04	6.88E-11	9.00E+00	1.27E-08
Hexane	1.74E-03	3.47E-04			2.00E+00	Yes					7.00E+02	4.96E-07
Mercury (total)	1.78E-07	3.55E-08									3.00E-01	1.18E-07
Methyl Isobutyl Ketone	5.83E-04	1.16E-04									3.00E+03	3.87E-08
Perchloroethylene (tetrachloroethylene)	1.88E-03	3.74E-04	1.69E-02	Yes	3.50E-01	Yes	6.80E+01	Yes	2.60E-07	9.73E-11	4.00E+01	9.36E-06
Toluene	1.10E-02	2.19E-03			4.00E+00	Yes					5.00E+03	4.38E-07
Trichloroethylene (trichloroethene)	1.13E-03	2.24E-04	5.00E-02	Yes	6.40E+00	Yes			4.10E-06	9.20E-10	2.00E+00	1.12E-04
Vinyl Chloride	1.40E-03	2.78E-04	1.28E-03	Yes	2.60E-01	Yes			8.80E-06	2.45E-09	1.00E+02	2.78E-06
Xylenes	3.90E-03	7.77E-04			3.00E+00	Yes	4.40E+01	Yes			1.00E+02	7.77E-06
Hydrogen Chloride (HCl)	2.30E-01	4.58E-02			2.00E-01	Yes	3.00E+01	Yes			2.00E+01	2.29E-03
Aggregate Lifetime Cancer Risk:										1.88E-08	Noncancer Hazard Quotient Sum:	2.53E-03

VIII. Taking or Damaging Implication Analysis

As required by 2-10-105, MCA, DEQ conducted a private property taking and damaging assessment which is located in the attached environmental assessment.

IX. Environmental Assessment

An environmental assessment, required by the Montana Environmental Policy Act, was completed for this project. A copy is attached.

**Montana Waste Systems, Inc.
High Plains Sanitary Landfill and Recycling Center**

**DRAFT Environmental Assessment for the
Preliminary Montana Air Quality Permit #2981-00**

Montana Department of Environmental Quality
Air Quality Bureau
Air Permitting Services Section
ENVIRONMENTAL ASSESSMENT

APPLICANT: Montana Waste Systems, Inc.		
SITE NAME: High Plains Sanitary Landfill and Recycling Center		
PROPOSED PERMIT NUMBER: Montana Air Quality Permit Number 2981-00		
APPLICATION DATE: June 8, 2023		
APPLICATION COMPLETE DATE: June 8, 2023		
LOCATION: Section 35, Township 22 North, Range 4 East		COUNTY: Cascade
PROPERTY OWNERSHIP:	FEDERAL ___ STATE ___ PRIVATE <u>X</u>	
EA PREPARER:	John P. Proulx – Air Quality Engineering Scientist	
EA Draft Date	EA Final Date	Permit Final Date
July 14, 2023	August 18, 2023	September 6, 2023

COMPLIANCE WITH THE MONTANA ENVIRONMENTAL POLICY ACT

The Montana Department of Environmental Quality (DEQ) prepared this Environmental Assessment (EA) in accordance with requirements of the Montana Environmental Policy Act (MEPA). An EA functions to determine the need to prepare an EIS through an initial evaluation and determination of the significance of impacts associated with the proposed action. However, an agency is required to prepare an EA whenever statutory requirements do not allow sufficient time for the agency to prepare an EIS. This document may disclose impacts over which DEQ has no regulatory authority.

COMPLIANCE WITH THE CLEAN AIR ACT OF MONTANA

The state law that regulates air quality permitting in Montana is the Clean Air Act of Montana (§ 75-2-201, et seq., Montana Code Annotated (MCA)). DEQ may not approve a proposed project contained in an application for an air quality permit unless the project complies with the requirements set forth in the Clean Air Act of Montana and the administrative rules adopted thereunder. DEQ's approval of an air quality permit application does not relieve Montana Waste Systems, Inc. – High Plains Sanitary Landfill and Recycling Center (High Plains) (from complying with any other applicable federal, state, or county laws, regulations, or ordinances. High Plains is responsible for obtaining any other permits, licenses, approvals, that are required for any part of the proposed project. DEQ will decide whether to approve the permit in accordance with the requirements of the Clean Air Act of Montana. DEQ may not withhold, deny, or impose conditions on the permit based on the information contained in this Environmental Assessment. § 75-1-201(4), MCA.

SUMMARY OF THE PROPOSED ACTION: High Plains has applied for a new Montana Air Quality Permit under the Clean Air Act of Montana for the installation of one (1) enclosed flare. The proposed action would be located in Section 35, Township 22 North, Range 4 East, Cascade County. All information included in the EA is derived from the permit application, discussions with the applicant, analysis of aerial photography, topographic maps, and other research tools.

PURPOSE AND BENEFIT FOR PROPOSED ACTION: DEQ's purpose in conducting this environmental review is to act upon High Plains air quality permit application to authorize one (1) enclosed flare and the associated air emissions. DEQ's action on the permit application is governed by the Clean Air Act of Montana, § 75-2-201, et seq., MCA and the Administrative Rules of Montana (ARM) 17.8.740, *et seq.*

The benefits of the proposed action include: The proposed permit action will destroy Hazardous Air Pollutants (HAPs) and Volatile Organic Compounds (VOC) that are produced from the decomposition of organic matter from the existing High Plains landfill instead of emitting it to the atmosphere.

REGULATORY RESPONSIBILITIES: In accordance with ARM 17.4.609(3)(c), DEQ must list any federal, state, or local authorities that have concurrent or additional jurisdiction or environmental review responsibility for the proposed action and the permits, licenses, and other authorizations required.

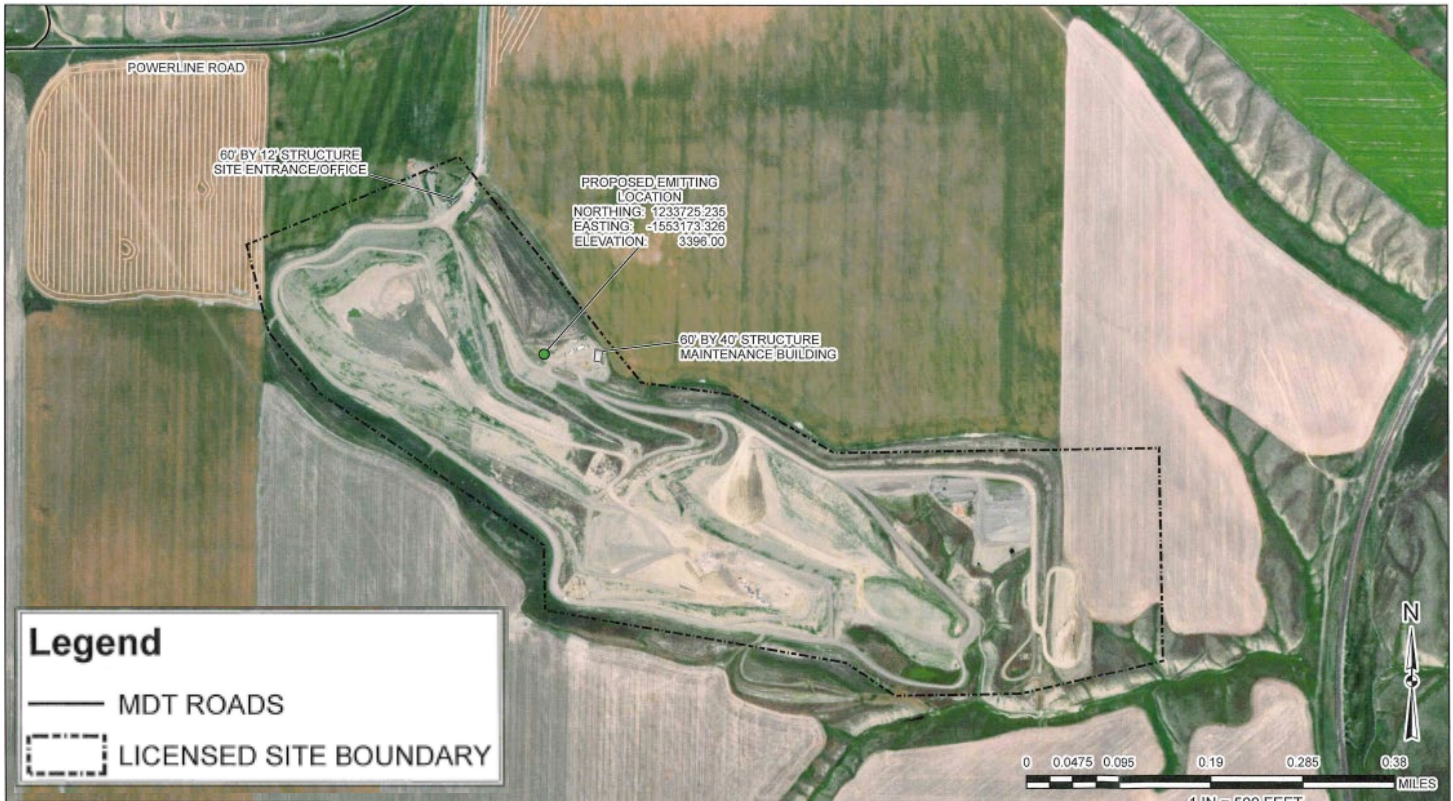
High Plains must conduct its operations according to the terms of its permit. High Plains further agrees to be legally bound by the permit, The Clean Air Act of § 75-2-201, et seq., MCA and ARM 17.8.740, *et seq.*

High Plains must cooperate fully with, and follow the directives of any federal, state, or local entity that may have authority over High Plains' landfill operations. These permits, licenses, and other authorizations may include: Cascade County and DEQ Air Quality Bureau (AQB), DEQ Solid Waste. For this permit, since the air quality permit being issued is a minor source with a Title V Operating Permit, Montana DEQ has jurisdiction to issue this permit.

Table 1: Proposed Action Details

Summary of Proposed Action	
General Overview	<p>The High Plains air quality permit application consists of the following equipment:</p> <p style="padding-left: 40px;">One (1) enclosed flare and associated equipment</p> <p>The facility would be permitted to operate until High Plains requested permit revocation or until the permit were revoked by DEQ due to gross non-compliance with the permit conditions.</p>
Proposed Action Estimated Disturbance	
Disturbance	<p>The project requires the installation of the enclosed flare with the associated well and pipe networking to deliver the landfill gas to the enclosed flare. The disturbance is within a parcel currently owned by NOYDB, Inc. The disturbance area is considered minimal.</p>
Proposed Action	
Duration	<p>Construction: Construction or commencement would start within three years of issuance of the final air quality permit.</p> <p>Construction Period: The construction period could begin as soon as the air quality permit (and any other permits identified in this EA) were in place.</p> <p>Operation Life: Until permit is either revoked at the request of the permittee or DEQ has determined the need for revocation.</p>
Construction Equipment	<p>Cranes, delivery trucks, various other types of smaller equipment</p>
Personnel Onsite	<p>Construction: Various number of installation personnel depending on which piece of equipment is being installed.</p> <p>Operations: No new employees</p>
Location and Analysis Area	<p>Location: The new processing equipment would be located in Section 35, Township 22 North and Range 4 East.</p> <p>Analysis Area: The area being analyzed as part of this environmental review includes the immediate project area (Figure 1), as well as neighboring lands surrounding the analysis area, as reasonably appropriate for the impacts being considered.</p>
Air Quality	<p>This EA will be attached to the Air Quality Permit which would include all enforceable conditions for operation of the emitting units</p>
Conditions incorporated into the Proposed Action	<p>The conditions developed in the Preliminary Determination of the Montana Air Quality Permit dated July 14, 2023, set forth in Sections II.A-D, and updated in the Decision Air Quality Permit if needed.</p>

Figure 1: Map of general location of the proposed project.



EVALUATION AND SUMMARY OF POTENTIAL IMPACTS TO THE PHYSICAL AND HUMAN ENVIRONMENT IN THE AREA AFFECTED BY THE PROPOSED PROJECT:

The impact analysis will identify and evaluate direct and secondary impacts. Direct impacts are those that occur at the same time and place as the action that triggers the effect. Secondary impacts means “a further impact to the human environment that may be stimulated or induced by or otherwise result from a direct impact of the action.” ARM 17.4.603(18). Where impacts are expected to occur, the impacts analysis estimates the duration and intensity of the impact.

The duration of an impact is quantified as follows:

- **Short-term:** Short-term impacts are defined as those impacts that would not last longer than the proposed operation of the site.
- **Long-term:** Long-term impacts are defined as impacts that would remain or occur following shutdown of the proposed facility.

The severity of an impact is measured using the following:

- **No impact:** There would be no change from current conditions.
- **Negligible:** An adverse or beneficial effect would occur but would be at the lowest levels of detection.
- **Minor:** The effect would be noticeable but would be relatively small and would not affect the function or integrity of the resource.
- **Moderate:** The effect would be easily identifiable and would change the function or integrity of

the resource.

- **Major:** The effect would alter the resource.

1. TOPOGRAPHY, GEOLOGY AND SOIL QUALITY, STABILITY AND MOISTURE:

The site is located on flat terrain at an elevation of approximately 3344 ft above sea level. The climatology is cold semi-arid climate with very cold and often long snowy winters. The area has an average annual rainfall of 14.37 inches per year and 63.5 inches of snowfall. The project will take place on privately owned land that is already developed for use as a municipal solid waste landfill. Construction activities would involve vehicle travel, some grading, well boring and casing, and possible entrenching work to bury landfill gas pipelines. Well boring and casing would be primarily done in the actual landfill through putrescible material and would not extend beyond the landfill.

The geology of the site is part of the Great Falls Tectonic Zone. The Great Falls Tectonic Zone (GFTZ) is a northeast trending zone of high angle faults and lineaments extending from northeastern Idaho into Saskatchewan, Canada. The GFTZ is believed to have facilitated the collision between the Archean Wyoming and Hearne cratons. Previous geophysical studies have analyzed seismic refraction data across the boundary between the Paleoproterozoic GFTZ and Archean Wyoming Craton (WC), this indicated the lower crustal layer thickens as it dips beneath the boundary towards the WC (Fultz, 2017).

Direct Impacts:

Proposed Action: The information provided above is based on the information that DEQ had available to it at the time of completing this EA and provided by the applicant (Montana Waste Systems, Inc., 2023). Impacts to topography, geology, soil quality, soil stability, and soil moisture would be minor and short-term.

Secondary Impacts:

Proposed Action: No secondary impacts to topography, geology, stability, and moisture are anticipated with the proposed action.

2. WATER QUALITY, QUANTITY, AND DISTRIBUTION:

Landfill gas is extracted from the landfill body and sent directly to the enclosed flare.

Direct Impacts:

Proposed Action: No primary impacts to water quality, quantity, and distribution would be expected because the proposed project does not involve the use of water in any of the processes.

Secondary Impacts:

Proposed Action: No secondary impacts are anticipated with the proposed action.

3. AIR QUALITY:

Landfill gas is extracted from the landfill body and sent directly to the enclosed flare. Along with the landfill gas, fugitive emissions in the form of road dust will also be generated from the used of vehicles on the landfill.

Direct Impacts:

Proposed Action: Installation of the equipment listed in this EA will route the landfill gas directly to the enclosed flare. A detailed emission inventory is included in Section IV of the permit. Regulated emissions from High Plains include CO, PM_{Tot}, PM₁₀, PM_{2.5}, NO_x, SO₂ and VOCs. High Plains will also release hazardous air pollutants (HAPs) but remains a minor source of HAPs. Fugitive emissions will be produced through vehicle use in the landfill, water and/or chemical dust suppressions will be utilized to reduce fugitive emissions from road traffic.

Secondary Impacts:

Proposed Action: Negligible impacts could be expected with the proposed action in the event of equipment malfunction.

4. VEGETATION COVER, QUANTITY AND QUALITY:

As the landfill continues to grow, new wells will need to be bored into the landfill body. These wells are small in diameter and will not present a large impact on vegetative cover that may be present on the landfill. Review of satellite imagery shows minimal vegetative cover on the landfill body.

Direct Impacts:

Proposed Action: Minor primary impacts to vegetative cover, quantity, and quality would be expected because the proposed project is located in an already existing and fully developed site.

Secondary Impacts:

Proposed Action: Negligible impacts to land disturbance at the site may result in propagation of noxious weeds.

5. TERRESTRIAL, AVIAN AND AQUATIC LIFE AND HABITATS:

Direct Impacts:

Proposed Action: No primary impacts to terrestrial, avian, and aquatic habitats would be expected because the proposed project is located in an already existing and fully developed site with any new construction activities being conducted on already developed land and in the landfill body.

Secondary Impacts:

Proposed Action: No secondary impacts to terrestrial, avian and aquatic life and habitats stimulated or induced by the direct impacts analyzed above would be anticipated for the proposed action.

6. UNIQUE, ENDANGERED, FRAGILE OR LIMITED ENVIRONMENTAL RESOURCES:

Direct Impacts:

Proposed Action: According to a Montana Natural Heritage Program, there are ten (10) species of concern;

Bird – Thick-billed Longspur, Chestnut-collard Longspur, Loggerhead Shrike, Burrowing Owl, Long-billed Curlew, Bobolink, Baird’s Sparrow, Sprague’s Pipot, and the Red Knot.

Bryophytes – Hooker’s Physcomitrium Moss

No impacts to unique, endangered, fragile, or limited environmental resources would be expected because the proposed project is located in an already existing and fully developed site with minimal possible new disturbances occurring.

Secondary Impacts:

Proposed Action: No secondary impacts to unique, endangered, fragile, or limited environmental resources are anticipated for the proposed action.

7. HISTORICAL AND ARCHAEOLOGICAL SITES:

The Montana State Historic Preservation Office (SHPO) was notified of the application. SHPO conducted a file search and provided a letter dated July 5, 2023.

Montana State Historical Preservation investigation records show that there have been no previously recorded sites within the designated search locale.

Direct Impacts:

Proposed Action: It is SHPO's position that any structure over fifty years of age is considered historic and is potentially eligible for listing on the National Register of Historic Places. If any structures are within the Area of Potential Effect, and are over fifty years old, we would recommend that they be recorded, and a determination of their eligibility be made prior to any disturbance taking place. The High Plains facility is less than 50 years old and there is no disturbance outside the landfill property boundary or alteration to structures over fifty years of age.

Secondary Impacts:

Proposed Action: No secondary impacts to historical and archaeological sites are anticipated.

8. SAGE GROUSE EXECUTIVE ORDER:

The project would not be in core, general or connectivity sage grouse habitat, as designated by the Sage Grouse Habitat Conservation Program (Program) at: <http://sagegrouse.mt.gov>.

Direct Impacts:

Proposed Action: The proposed action is not located within Sage Grouse habitat, no direct impacts would occur.

Secondary Impacts:

Proposed Action: No secondary impacts to sage grouse or sage grouse habitat would be expected.

9. AESTHETICS:

The approximate equipment footprint is 20 feet by 20 feet with an exhaust stack that is 40 feet tall. Most of the existing landfill operations are shielded from the general public by rolling fields.

Direct Impacts:

Proposed Action: Minor impacts are expected with the installation of the proposed equipment. The addition of the enclosed flare would be visible to the surrounding areas. The area is located along Highway 87 in rolling fields approximately 6 miles from the city of Great Falls and would

be mostly concealed from eyesight. The nearest residential facility is approximately 2.5 miles to the west and would not be visible due to the rolling hills.

Secondary Impacts:

Proposed Action: No secondary impacts to aesthetics and noise are anticipated with the proposed action.

10. DEMANDS ON ENVIRONMENTAL RESOURCES OF LAND, WATER, AIR OR ENERGY:

The enclosed flare will use natural gas as an energy source.

Direct Impacts:

Proposed Action: No primary on environmental resources of land, water, or air. Minor impacts to energy would be expected due to the enclosed flare utilizing pipeline quality natural gas as a fuel source.

Secondary Impacts:

Proposed Action: No secondary impacts to land, water, air or energy resources are anticipated with the proposed action.

11. IMPACTS ON OTHER ENVIRONMENTAL RESOURCES:

Direct Impacts:

Proposed Actions: The enclosed flare will be located in an existing, developed facility and the current permit action will not have any impacts on environmental resources outside those already identified in this EA.

Secondary Impacts:

Proposed Action: No secondary impacts to other environmental resources are anticipated as a result of the proposed action.

12. HUMAN HEALTH AND SAFETY:

A complete human health risk assessment was conducted for the enclosed flare and is included in the MAQP Analysis, Section VII.

Direct Impacts:

Proposed Action: Impacts to human health and safety are anticipated to be short-term and minor as a result of this project.

Secondary Impacts:

Proposed Action: No secondary impacts to human health and safety are anticipated as a result of the proposed action.

13. INDUSTRIAL, COMMERCIAL AND AGRICULTURAL ACTIVITIES AND PRODUCTION:

Direct Impacts:

Proposed Action: Minor impacts are expected with the proposed permit action. The High Plains facility will be located in an existing, fully developed area and the proposed action will require

minor agricultural activities as the landfill grows. Minor industrial and commercial impacts would be expected due to well boring and casing and installation of the well gas transmission lines and enclosed flare unit.

Secondary Impacts:

Proposed Action: No secondary impacts to industrial, commercial, water conveyance structures, and agricultural activities and production are anticipated as a result of the proposed action.

14. QUANTITY AND DISTRIBUTION OF EMPLOYMENT:

The enclosed flare will not require any additional personnel to operate.

Direct Impacts:

Proposed Action: No to quantity and distribution of employment are anticipated for the proposed action because the site is an unoccupied gas collection system.

Secondary Impacts:

Proposed Action: Negligible increases in in distribution of employment are anticipated as a result of the proposed action.

15. LOCAL AND STATE TAX BASE AND TAX REVENUES:

Direct Impacts:

Proposed Action: Local, state and federal governments would be responsible for appraising the property, setting tax rates, collecting taxes, from the companies, employees, or landowners benefitting from this operation.

Secondary Impacts:

Proposed Action: No secondary impacts to local and state tax base and tax revenues are anticipated as a result of the proposed action.

16. DEMAND FOR GOVERNMENT SERVICES:

Direct Impacts:

Proposed Action: Minor impacts are anticipated for demand for government services. The air quality permit and physical site associated with the current permit action would require inspections from state government representatives to ensure the facility is operating within the limits and conditions listed in the air quality permit. The facility would be available for inspection at the same time as the currently permitted municipal solid waste landfill by both State and County officials.

Secondary Impacts:

Proposed Action: No secondary impacts are anticipated with the proposed action.

17. LOCALLY ADOPTED ENVIRONMENTAL PLANS AND GOALS:

Direct Impacts:

Proposed Action: No primary impacts to the locally adopted environmental plans and goals are anticipated as a result of the proposed action.

Secondary Impacts:

Proposed Action: No secondary impacts to the locally adopted environmental plans and goals are anticipated as a result of the proposed action.

18. ACCESS TO AND QUALITY OF RECREATIONAL AND WILDERNESS ACTIVITIES:

Direct Impacts:

Proposed Action: No primary impacts to access and quality of recreational and wilderness activities are anticipated as a result of the proposed action. The High Plains facility is surrounded on all sides by undeveloped, single owner private land.

Secondary Impacts:

Proposed Action: No secondary impacts to access and quality of recreational and wilderness activities are anticipated as a result of the proposed action.

19. DENSITY AND DISTRIBUTION OF POPULATION AND HOUSING:

Direct Impacts:

Proposed Action: No primary impacts to density and distribution of population and housing are anticipated as a result of the current permit action.

Secondary Impacts:

Proposed Action: No secondary impacts to density and distribution of population and housing are anticipated as a result of the proposed action.

20. SOCIAL STRUCTURES AND MORES:

Direct Impacts:

Proposed Action: No primary impacts anticipated to social structures and mores are anticipated as a result of the current permit action.

Secondary Impacts:

Proposed Action: No secondary impacts to social structures and mores are anticipated as a result of the proposed action.

21. CULTURAL UNIQUENESS AND DIVERSITY:

Direct Impacts:

Proposed Action: No primary impacts anticipated to cultural uniqueness and diversity are anticipated from the current permit action.

Secondary Impacts:

Proposed Action: No secondary impacts to cultural uniqueness and diversity are anticipated as a result of the proposed action.

22. PRIVATE PROPERTY IMPACTS:

The proposed processing equipment would be located in Section 35, Township 22 North, and

Range 4 East. This is within a 492 acre parcel owned by NOYDB, Inc.

The proposed action would take place on privately-owned land. The analysis below in response to the Private Property Assessment Act indicates no impact. DEQ does not plan to deny the application or impose conditions that would restrict the regulated person’s use of private property so as to constitute a taking. Further, if the application is complete, DEQ must take action on the permit pursuant to § 75-2-218(2), MCA. Therefore, DEQ does not have discretion to take the action in another way that would have less impact on private property—its action is bound by a statute.

YES	NO	
X		1. Does the action pertain to land or water management or environmental regulation affecting private real property or water rights?
	X	2. Does the action result in either a permanent or indefinite physical occupation of private property?
	X	3. Does the action deny a fundamental attribute of ownership? (ex.: right to exclude others, disposal of property)
	X	4. Does the action deprive the owner of all economically viable uses of the property?
	X	5. Does the action require a property owner to dedicate a portion of property or to grant an easement? [If no, go to (6)].
		5a. Is there a reasonable, specific connection between the government requirement and legitimate state interests?
		5b. Is the government requirement roughly proportional to the impact of the proposed use of the property?
	X	6. Does the action have a severe impact on the value of the property? (consider economic impact, investment-backed expectations, character of government action)
	X	7. Does the action damage the property by causing some physical disturbance with respect to the property in excess of that sustained by the public generally?
	X	7a. Is the impact of government action direct, peculiar, and significant?
	X	7b. Has government action resulted in the property becoming practically inaccessible, waterlogged or flooded?
	X	7c. Has government action lowered property values by more than 30% and necessitated the physical taking of adjacent property or property across a public way from the property in question?
	X	Takings or damaging implications? (Taking or damaging implications exist if YES is checked in response to question 1 and also to any one or more of the following questions: 2, 3, 4, 6, 7a, 7b, 7c; or if NO is checked in response to questions 5a or 5b; the shaded areas)

23. OTHER APPROPRIATE SOCIAL AND ECONOMIC CIRCUMSTANCES:

Due to the nature of the proposed action, no further direct or secondary impacts are anticipated from this project.

ADDITIONAL ALTERNATIVES CONSIDERED:

No Action Alternative: In addition to the proposed action, DEQ is considering a "no action" alternative. The "no action" alternative would deny the approval of the proposed action. The applicant would lack the authority to conduct the proposed activity. Any potential impacts that would result from the proposed action would not occur. The no action alternative forms the baseline from which the impacts of the proposed action can be measured.

If the applicant demonstrates compliance with all applicable rules and regulations as required for approval, the “no action” alternative would not be appropriate. Pursuant to, § 75-1-201(4)(a), (MCA)

DEQ “may not withhold, deny, or impose conditions on any permit or other authority to act based on” an environmental assessment.

CUMULATIVE IMPACTS:

Cumulative impacts are the collective impacts on the human environment within the borders of Montana of the proposed action when considered in conjunction with other past and present actions related to the proposed action by location and generic type. Related future actions must also be considered when these actions are under concurrent consideration by any state agency through preimpact statement studies, separate impact statement evaluation, or permit processing procedures.

This environmental review analyzes the proposed action submitted by High Plains.

DEQ considered potential impacts related to this project and potential secondary impacts. Due to the limited activities in the analysis area, cumulative impacts related to this project would be minor and short-term.

PUBLIC INVOLVEMENT:

Scoping for this proposed action consisted of internal efforts to identify substantive issues and/or concerns related to the proposed operation. Internal scoping consisted of internal review of the environmental assessment document by DEQ Air Permitting staff.

Internal efforts also included queries to the following websites/ databases/ personnel:

- Montana State Historic Preservation Office
- Montana Department of Environmental Quality (DEQ)
- Montana Natural Heritage Program

OTHER GOVERNMENTAL AGENCIES WITH JURISDICTION:

The proposed project would be fully located on privately-owned land. All applicable local, state, and federal rules must be adhered to, which, at some level, may also include other local, state, federal, or tribal agency jurisdiction. Other governmental agencies which may have overlapping or sole jurisdiction include, but may not be limited to: Cascade County, OSHA (worker safety), DEQ AQB (air quality) and Water Protection Bureau (groundwater and surface water discharge; stormwater), DNRC (water rights), and MDT (road access).

NEED FOR FURTHER ANALYSIS AND SIGNIFICANCE OF POTENTIAL IMPACTS

Under ARM 17.4.608, DEQ is required to determine the significance of impacts associated with the proposed action. This determination is the basis for the agency’s decision concerning the need to prepare an environmental impact statement and also refers to DEQ’s evaluation of individual and cumulative impacts. DEQ is required to consider the following criteria in determining the significance of each impact on the quality of the human environment:

1. The severity, duration, geographic extent, and frequency of the occurrence of the impact;

“Severity” is analyzed as the density of the potential impact while “extent” is described as the area where the impact is likely to occur. An example could be that a project may propagate ten noxious weeds on a surface area of 1 square foot. In this case, the impact may be a high severity over a low extent. If those ten noxious weeds were located over ten acres there may be a low

severity over a larger extent.

“Duration” is analyzed as the time period in which the impact may occur while “frequency” is analyzed as how often the impact may occur. For example, an operation that occurs throughout the night may have impacts associated with lighting that occur every night (frequency) over the course of the one season project (duration).

2. The probability that the impact will occur if the proposed action occurs; or conversely, reasonable assurance in keeping with the potential severity of an impact that the impact will not occur;
3. Growth-inducing or growth-inhibiting aspects of the impact, including the relationship or contribution of the impact to cumulative impacts;
4. The quantity and quality of each environmental resource or value that would be affected, including the uniqueness and fragility of those resources and values;
5. The importance to the state and to society of each environmental resource or value that would be affected;
6. Any precedent that would be set as a result of an impact of the proposed action that would commit DEQ to future actions with significant impacts or a decision in principle about such future actions; and
7. Potential conflict with local, state, or federal laws, requirements, or formal plans.

The significance determination is made by giving weight to these criteria in their totality. For example, impacts with moderate or major severity may be determined to be not significant if the duration of the impacts is considered to be short-term. As another example, however, moderate or major impacts of short-term duration may be considered to be significant if the quantity and quality of the resource is limited and/or the resource is considered to be unique or fragile.

As a final example, moderate or major impacts to a resource may be determined to be not significant if the quantity of that resource is high or the quality of the resource is not unique or fragile.

Pursuant to ARM 17.4.607, preparation of an environmental assessment is the appropriate level of environmental review under MEPA if statutory requirements do not allow sufficient time for an agency to prepare an environmental impact statement. An agency determines whether sufficient time is available to prepare an environmental impact statement by comparing statutory requirements that establish when the agency must make its decision on the proposed action with the time required to obtain public review of an environmental impact statement plus a reasonable period to prepare a draft environmental review and, if required, a final environmental impact statement.

SIGNIFICANCE DETERMINATION

The severity, duration, geographic extent and frequency of the occurrence of the impacts associated with the proposed action would be limited. High Plains proposes to construct and operate the proposed action on private land located in Section 35, Township 22 North and Range 4 East, in Cascade County, Montana.

DEQ has not identified any significant impacts associated with the proposed action for any

environmental resource. Approving High Plains' Air Quality Application would not set precedent that commits DEQ to future actions with significant impacts or a decision in principle about such future actions. If High Plains submits another permit application, DEQ is not committed to approve those applications. DEQ would conduct a new environmental review for any subsequent air quality permit applications sought by High Plains. DEQ would make a decision on High Plains' subsequent application based on the criteria set forth in the Clean Air Act of Montana.

DEQ's issuance of an Air Quality Permit to High Plains for this proposed operation does not set a precedent for DEQ's review of other applications, including the level of environmental review. The level of environmental review decision is made based on a case-specific consideration of the criteria set forth in ARM 17.4.608.

DEQ does not believe that the proposed action has any growth-inducing or growth-inhibiting aspects or that it conflicts with any local, state, or federal laws, requirements, or formal plans. Based on a consideration of the criteria set forth in ARM 17.4.608, the proposed state action is not predicted to significantly impact the quality of the human environment. Therefore, at this time, preparation of an environmental assessment is determined to be the appropriate level of environmental review under the Montana Environmental Protection Act.

Environmental Assessment and Significance Determination Prepared By:

<u>John P. Proulx</u>	<u>Air Quality Engineer</u>
Name	Title

EA Reviewed By:

<u>Julie A. Merkel</u>	<u>Permitting Services Section Supervisor</u>
Name	Title

References

Montana Air Quality Permit Application 2981-00_2023_02_02_APP

State Historical Preservation Office

Montana Natural Heritage Program, <https://mtnhp.org/mapviewer/?t=4>

AP-42, <https://www.epa.gov/air-emissions-factors-and-quantification/ap-42-compilation-air-emissions-factors>

Operating Permit #OP2981-7

Montana Cadastral - <http://svc.mt.gov/msl/mtcadastral>

Fultz, T. L. (2017). Geophysical Analysis of the Gr A Geophysical Analysis of the Great Falls Tectonic Zone and the one and the Surrounding Area, Montana USA (3148) [Master's Thesis, Missouri State University]. Bear Works.