

PurpleAirs in Schools Project

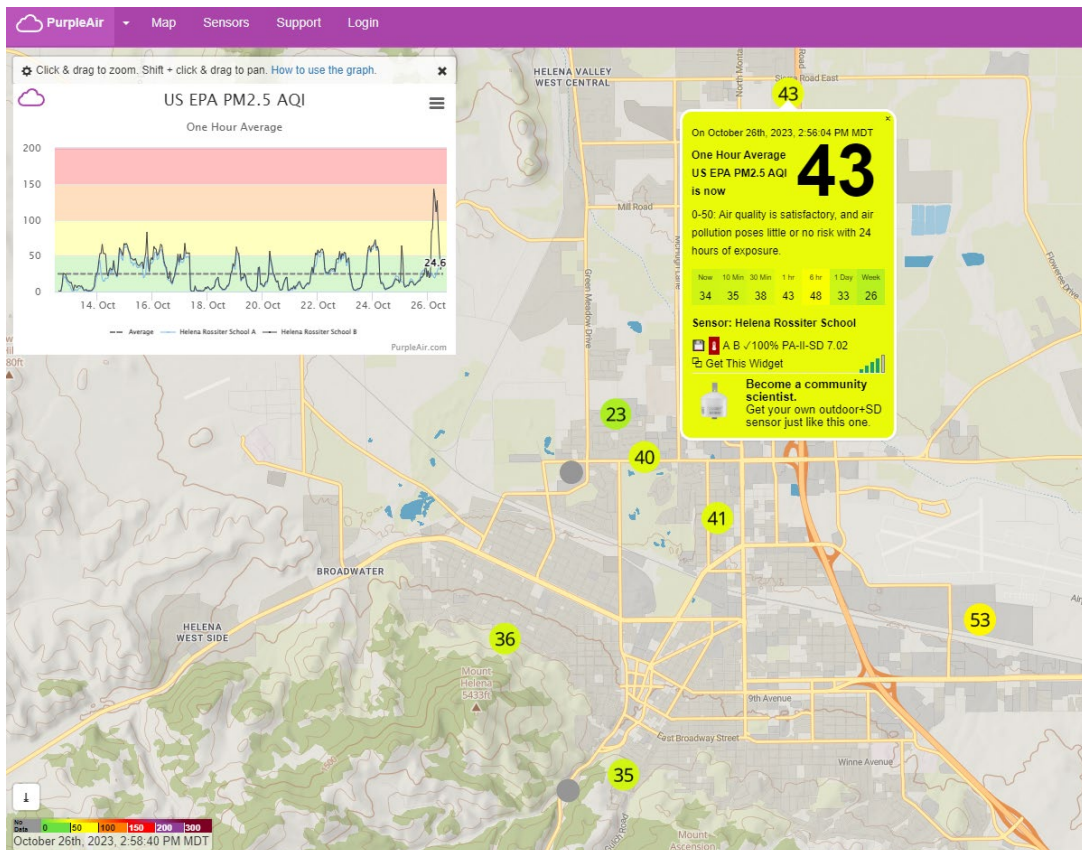
Free Air Sensors for your school to monitor Montana's air pollutant of concern: Particulate Matter (PM_{2.5})

PurpleAir Sensors Report the Air Quality Index

- Air quality index (AQI) is calculated from the measured PM_{2.5} concentration which is correlated to an AQI value.
- AQI value is on a scale of 0 to 500.
 - Lower the AQI value, the better the air quality.
- AQI index values reflect levels of health concern associated with exposure to PM_{2.5}.
- Ranges of health concern are communicated via color scale.

AQI Color	Levels of Concern	Values of Index	Description of Air Quality
Green	Good	0 to 50	Air quality is satisfactory, and air pollution poses little or no risk.
Yellow	Moderate	51 to 100	Air quality is acceptable. However, there may be a risk for some people, particularly those who are unusually sensitive to air pollution.
Orange	Unhealthy for Sensitive Groups	101 to 150	Members of sensitive groups may experience health effects. The general public is less likely to be affected.
Red	Unhealthy	151 to 200	Some members of the general public may experience health effects; members of sensitive groups may experience more serious health effects.
Purple	Very Unhealthy	201 to 300	Health alert: The risk of health effects is increased for everyone.
Maroon	Hazardous	301 and higher	Health warning of emergency conditions: everyone is more likely to be affected.

The online PurpleAir Air Quality Map displays your sensors in addition to other sensors that have been installed in your community. The sensors provide the real-time AQI Level of Health Concern as well as a plot of the Health Concern trends.



To get your **free air sensors** or more information contact Keri Nauman at MT DEQ (406-444-6698 & keri.nauman@mt.gov) or Dave Jones at UM (406-243-4861 & david.jones@mso.umt.edu).