

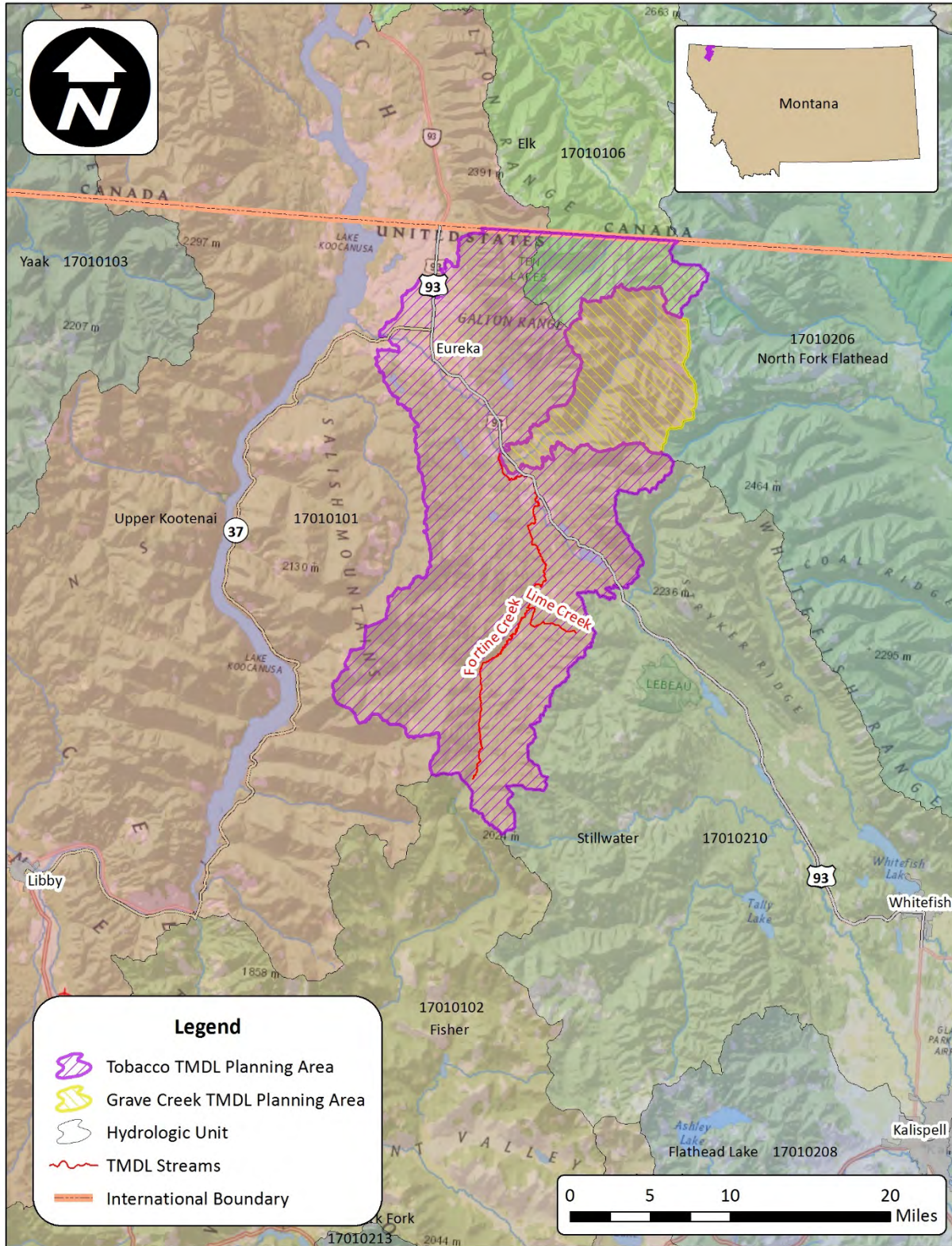
APPENDIX A – MAPS AND TABLES

LIST OF MAPS

Map A-1. General location of the Tobacco TMDL Planning Area	A-2
Map A-2. Average annual precipitation and weather stations in the Tobacco TMDL Planning Area	A-4
Map A-3. Geology of the Tobacco TMDL Planning Area.....	A-5
Map A-4. Soil Erodibility in the Tobacco TMDL Planning Area	A-6
Map A-5. Land ownership in the Tobacco TMDL Planning Area.....	A-7
Map A-6. Types of land cover and land use in the Tobacco TMDL Planning Area	A-8
Map A-7. Locations of MPDES permitted point sources in the Tobacco TMDL Planning Area	A-9
Map A-8. Fish species of concern in the Tobacco TMDL Planning Area	10
Map A-9. Timber harvest that has occurred as part of the 2007 Trego Project. Red line is the approximate Lime watershed boundary. Base map provided by the Kootenai National Forest from the Trego Decision Notice and Finding of No Significant Impact, February 2007	A-11

LIST OF TABLES

Table A-1. 2014 Impaired Waterbodies, Impairment Causes, Impaired Uses, and Impairment Cause Status in the Tobacco TMDL Planning Area ¹	A-3
--	-----

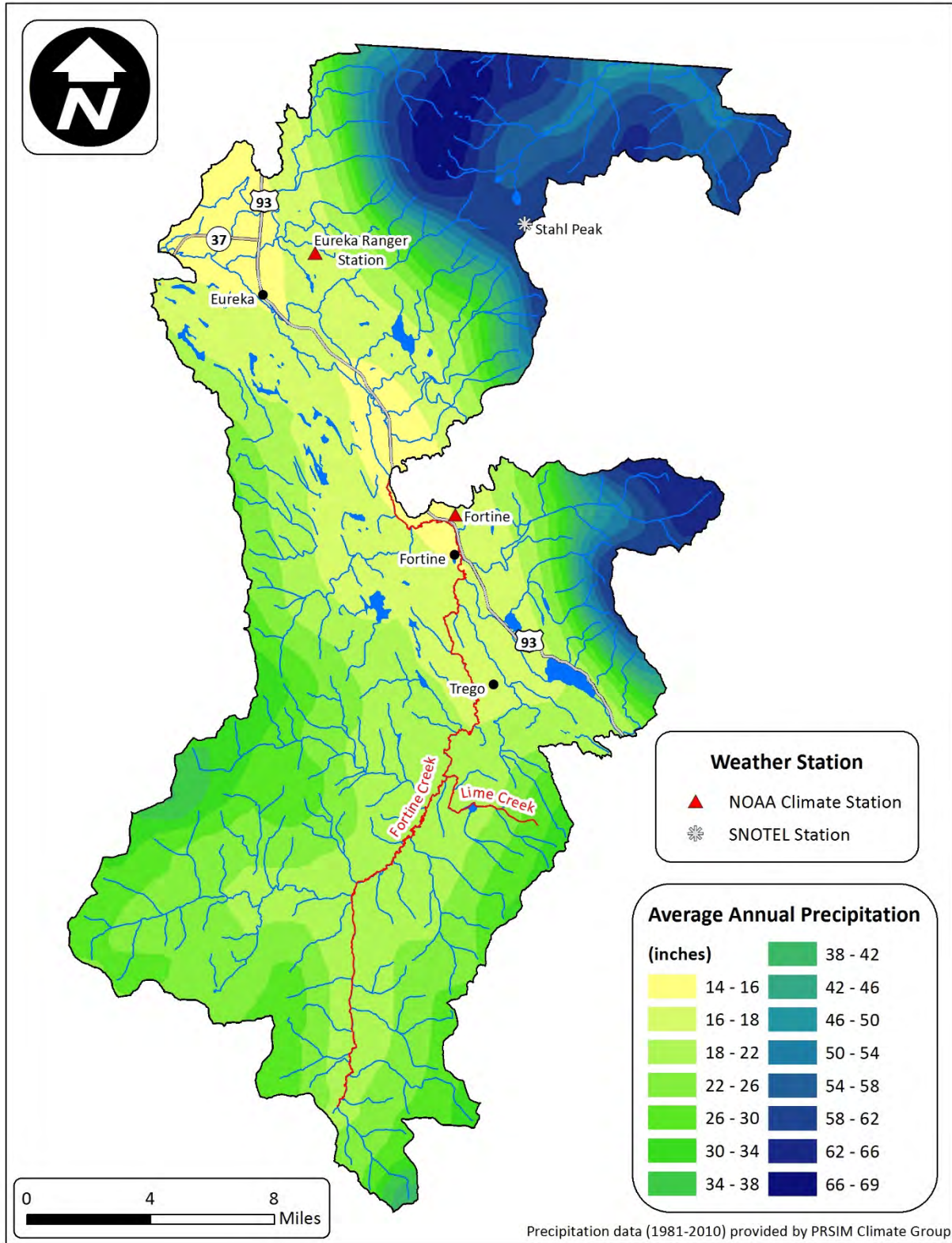


Map A-1. General location of the Tobacco TMDL Planning Area

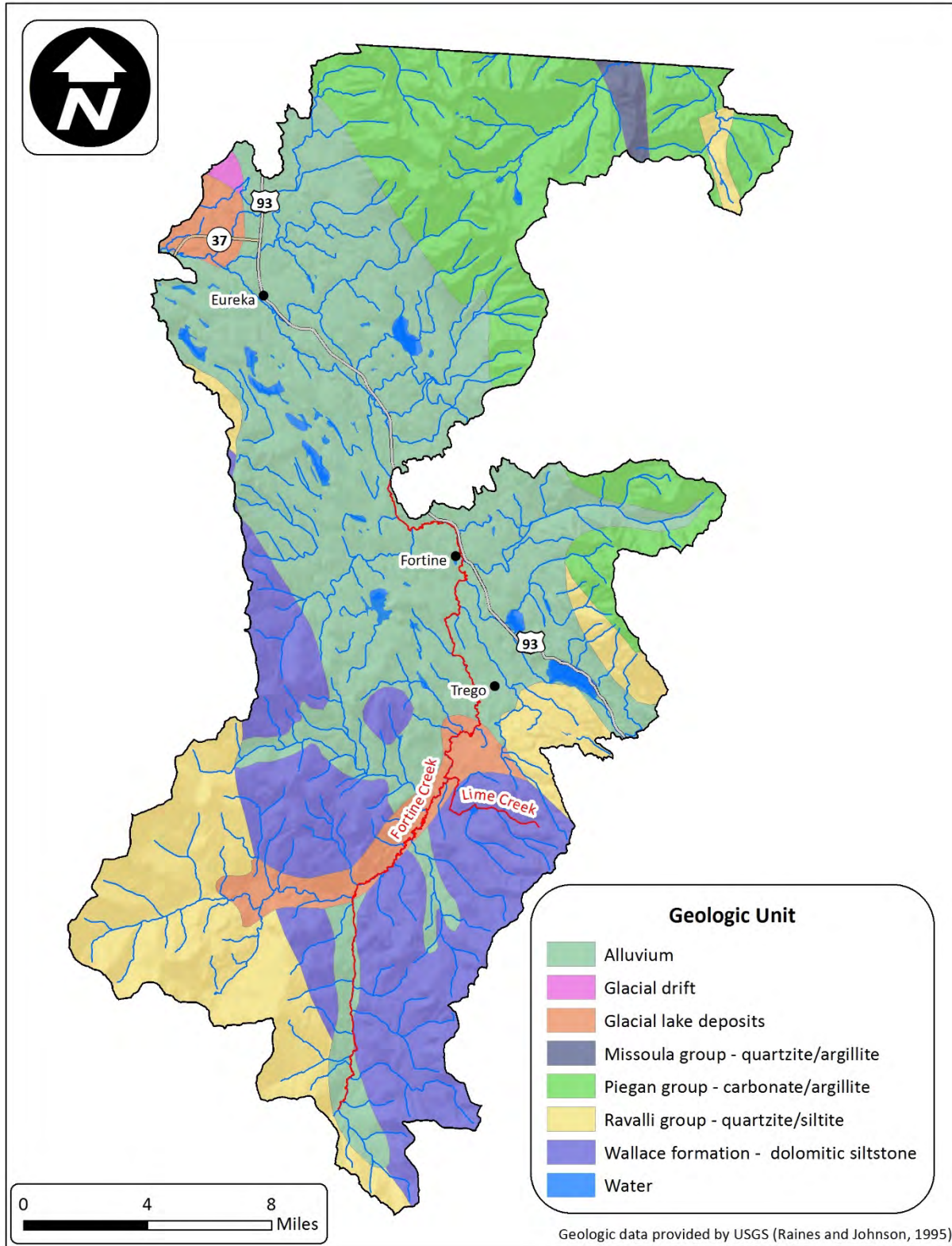
Table A-1. 2014 Impaired Waterbodies, Impairment Causes, Impaired Uses, and Impairment Cause Status in the Tobacco TMDL Planning Area¹.

Waterbody & Location Description	Waterbody ID	Impairment Cause	TMDL Pollutant Category	Impaired Use(s)	Impairment Cause Status
Fortine Creek, headwaters to mouth (Grave Creek)	MT76D004_020	Alteration in streamside or littoral vegetative covers	Non-pollutant	Aquatic Life	Addressed by sediment TMDL established in 2011 and also in this document
		Excess algal growth	Non-pollutant	Aquatic Life, Primary Contact Recreation	Discussed in document; Follow up work recommended
		Low flow alterations	Non-pollutant	Aquatic Life, Primary Contact Recreation	Discussed in document; Follow up work recommended
		Sediment/siltation	Sediment	Aquatic Life	Sediment TMDL established in 2011
		Temperature	Temperature	Aquatic Life	Temperature TMDL contained in this document
Lime Creek, headwaters to mouth (Fortine Creek)	MT76D004_050	Alteration in streamside or littoral vegetative covers	Non-pollutant	Aquatic Life	Addressed by sediment TMDL established in 2011 and also in this document
		Chlorophyll- <i>a</i>	Non-pollutant	Aquatic Life, Primary Contact Recreation	Addressed by TN TMDL in this document
		Total Nitrogen (TN)	Nutrients	Aquatic Life	TN TMDL contained in this document
		Total Phosphorus (TP)	Nutrients	Aquatic Life	TP TMDL contained in this document
		Sediment/siltation	Sediment	Aquatic Life	Sediment TMDL established in 2011
Deep Creek, headwaters to mouth (Fortine Creek)	MT76D004_080	Alteration in streamside or littoral vegetative covers	Non-pollutant	Aquatic Life	Addressed by sediment TMDL established in 2011 and also in this document
		Excess algal growth	Non-pollutant	Aquatic Life, Primary Contact Recreation	Discussed in document; Follow up work recommended
		Sediment/siltation	Sediment	Aquatic Life	Sediment TMDL established in 2011

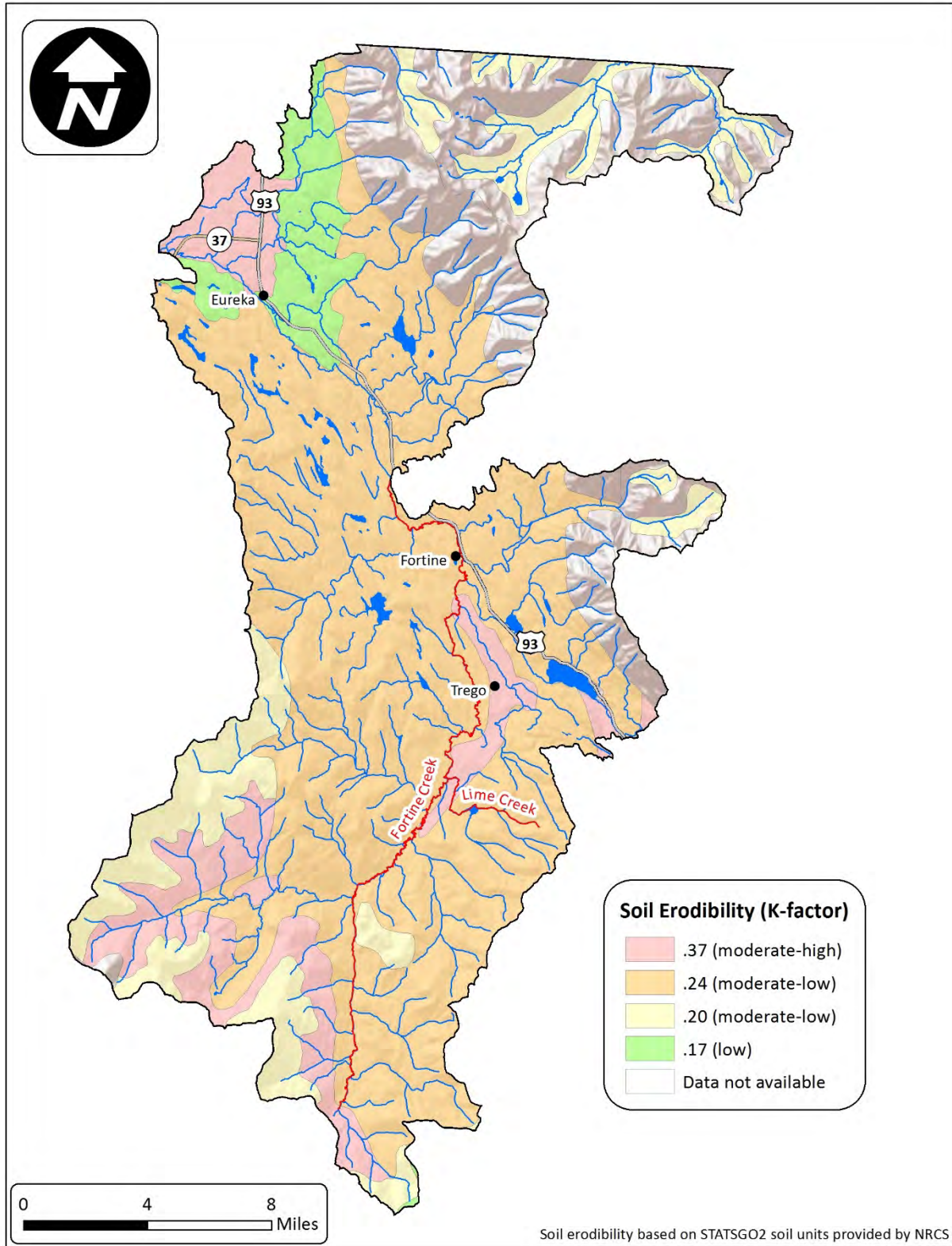
¹This table includes all remaining impairments in the planning area but does not include waterbodies that only have sediment and/or non-pollutant causes that were addressed in the Grave Creek and Tobacco sediment TMDL documents (River Design Group, 2005; Montana Department of Environmental Quality, Planning, Prevention and Assistance Division, Water Quality Planning Bureau, 2011).



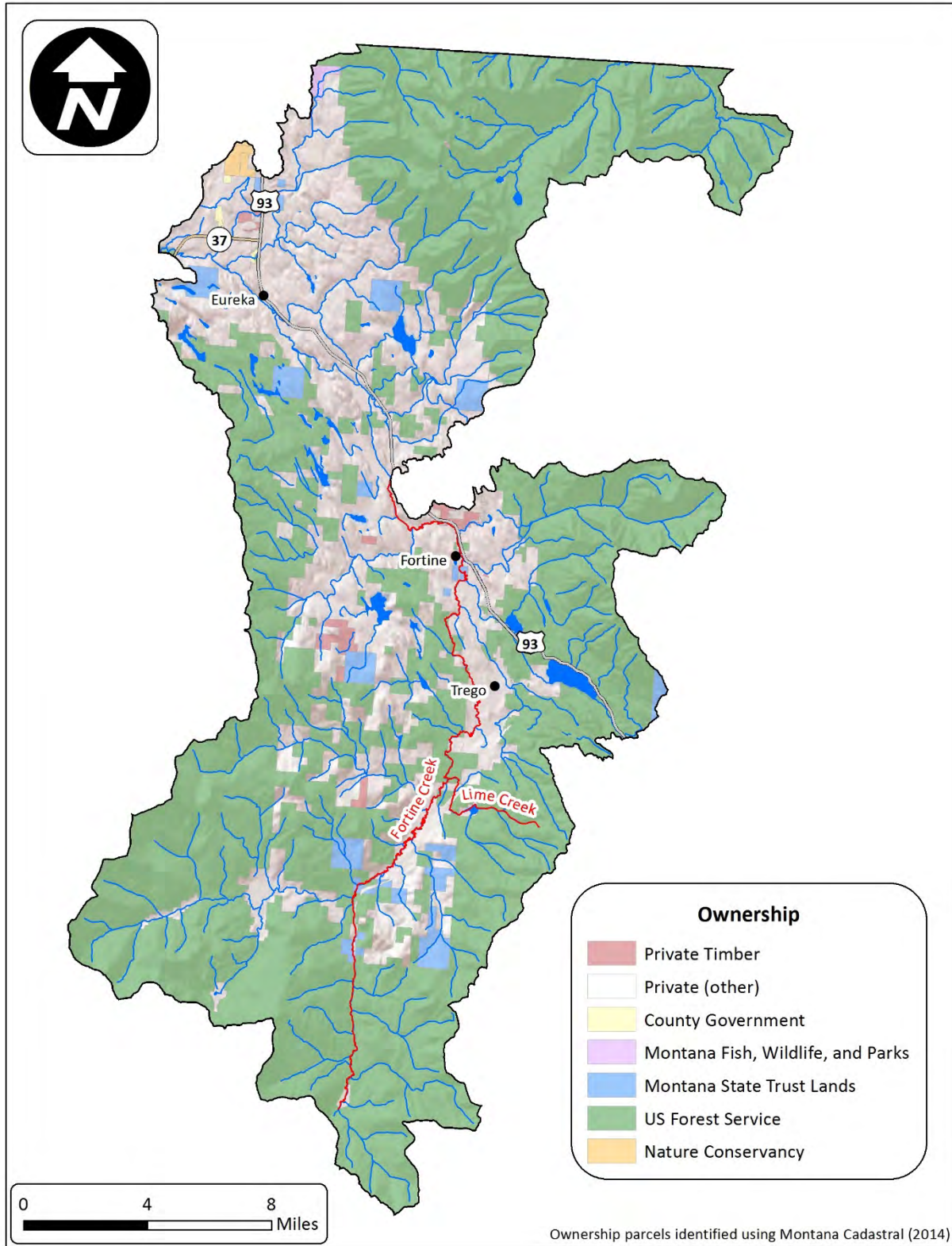
Map A-2. Average annual precipitation and weather stations in the Tobacco TMDL Planning Area



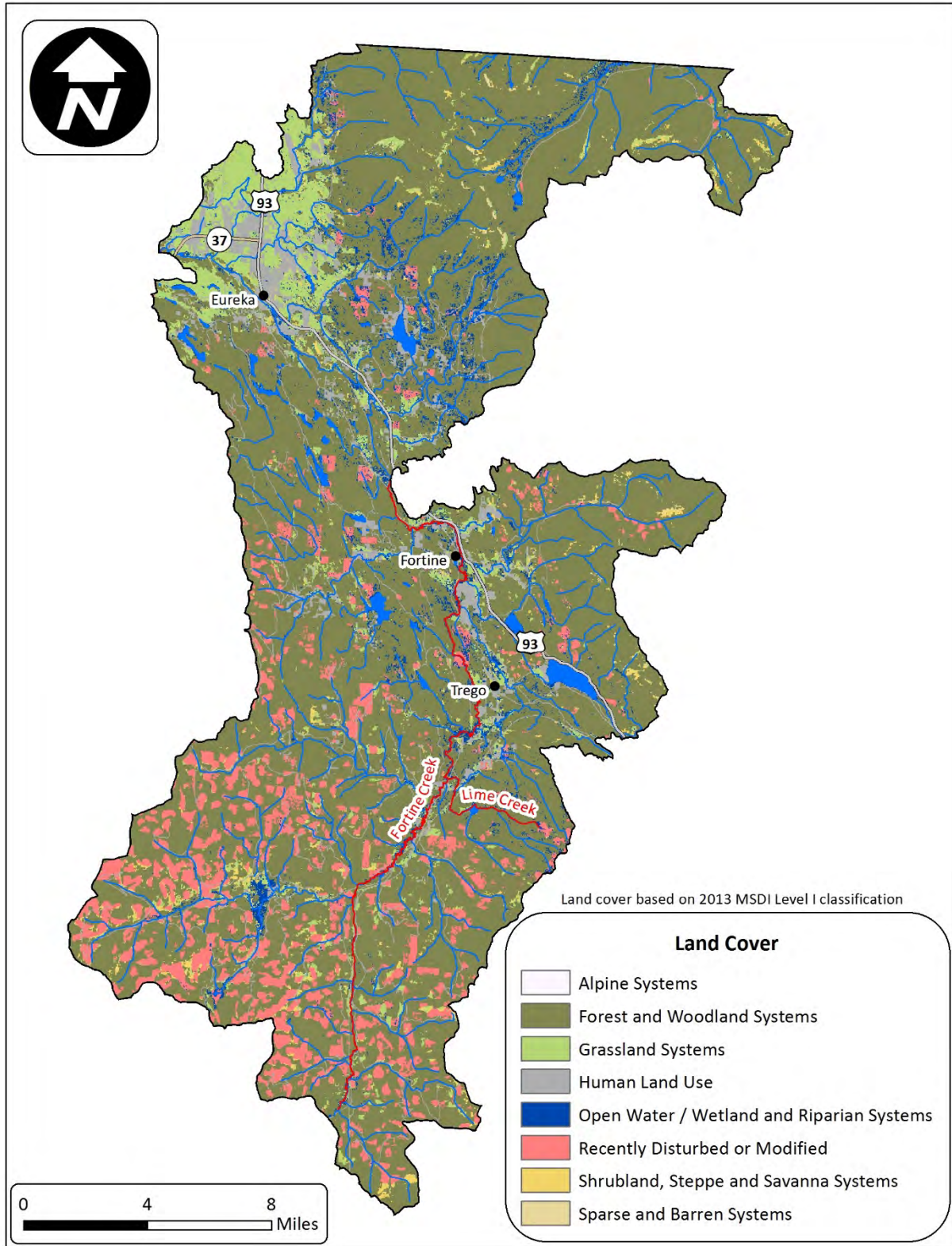
Map A-3. Geology of the Tobacco TMDL Planning Area



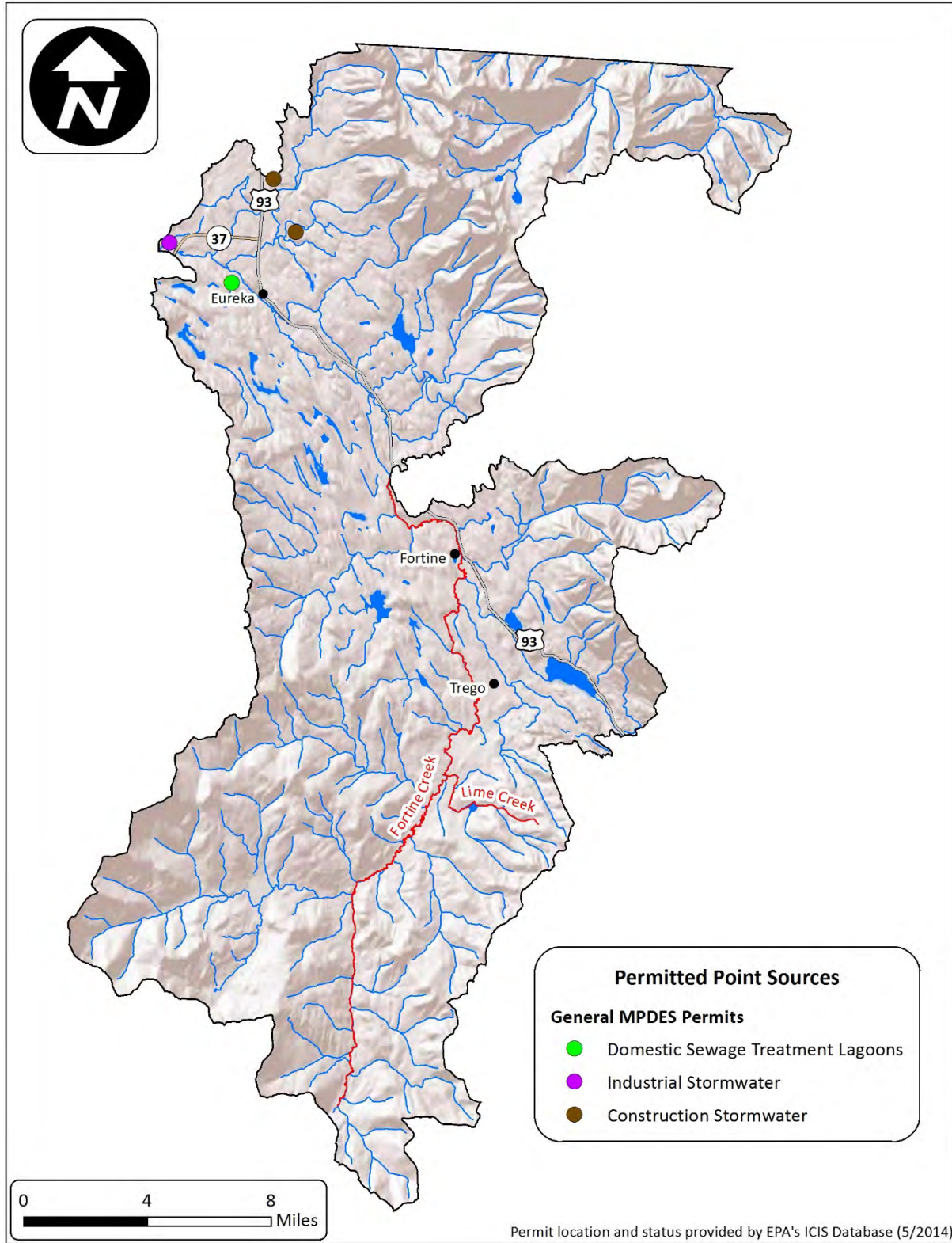
Map A-4. Soil Erodibility in the Tobacco TMDL Planning Area



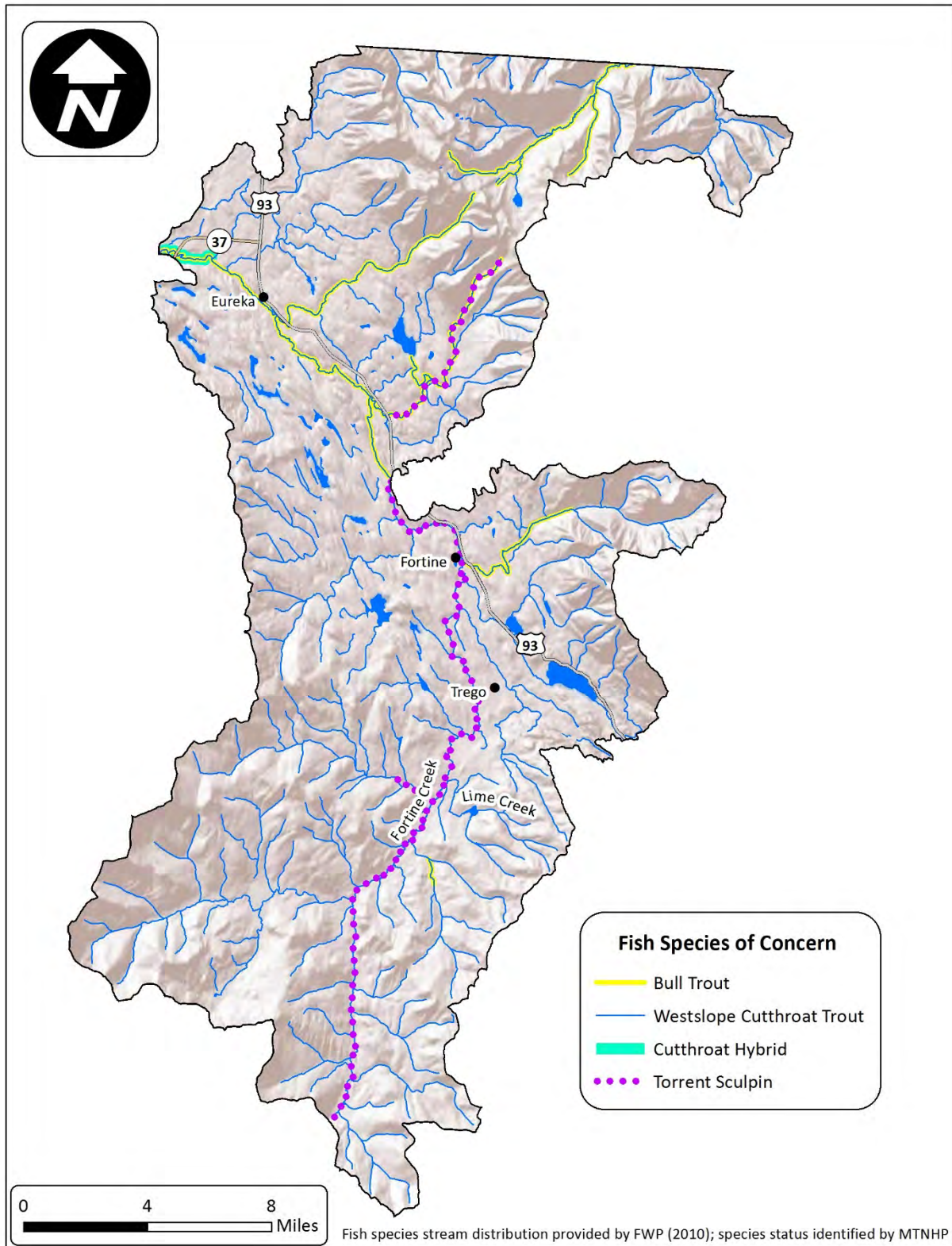
Map A-5. Land ownership in the Tobacco TMDL Planning Area



Map A-6. Types of land cover and land use in the Tobacco TMDL Planning Area



Map A-7. Locations of MPDES permitted point sources in the Tobacco TMDL Planning Area



Map A-8. Fish species of concern in the Tobacco TMDL Planning Area

DN Map 1

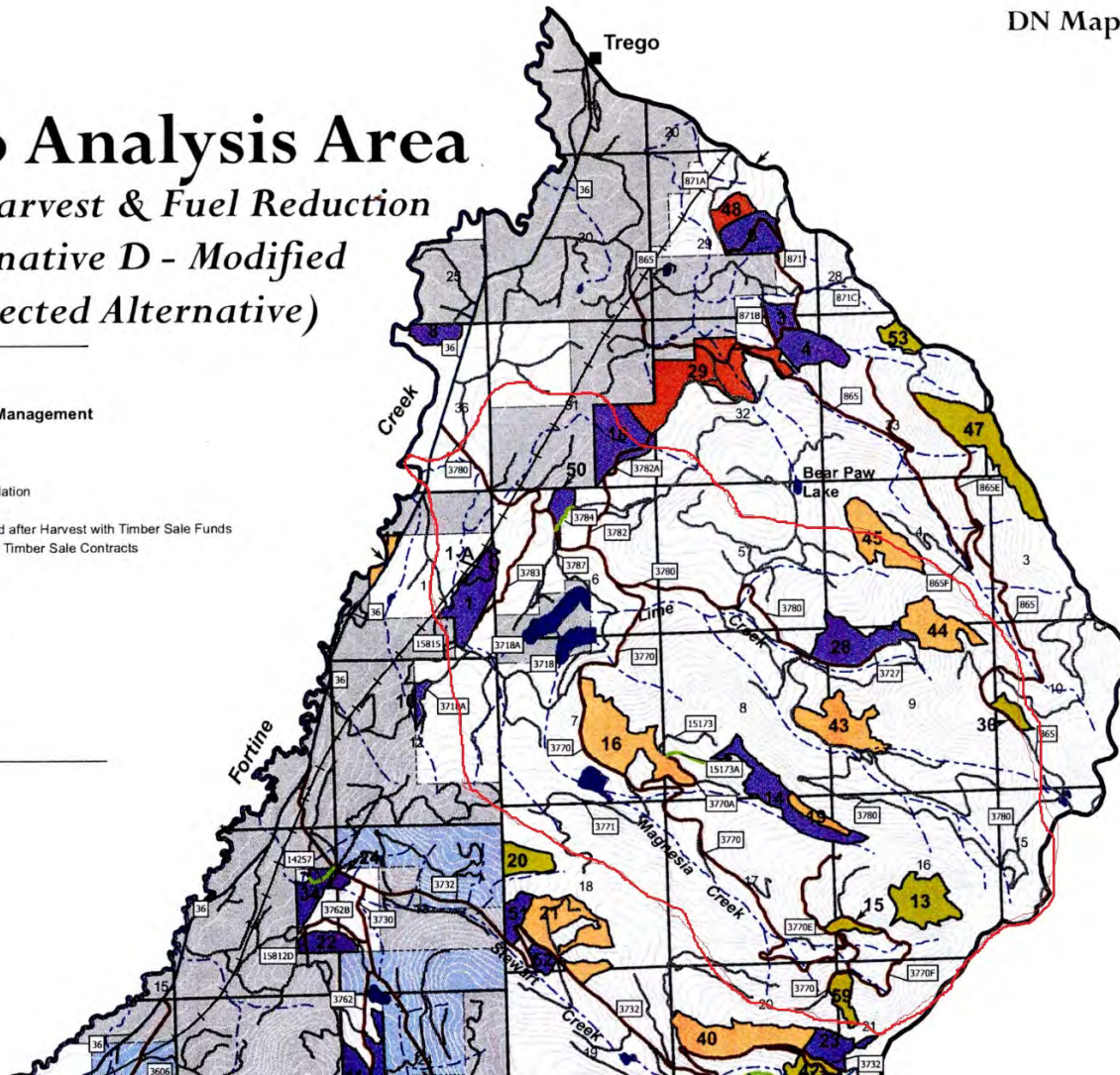
Trego Analysis Area

Timber Harvest & Fuel Reduction

Alternative D - Modified (Selected Alternative)

LEGEND

- Proposed Vegetation Management**
- Intermediate Harvest
 - Regeneration Harvest
 - Uneven Aged Mgmt
 - Fuels Treatment with Manipulation
 - Ecosystem Burning
 - Roads to be Decommissionated after Harvest with Timber Sale Funds
 - BMPs to be Performed under Timber Sale Contracts
 - Streams
 - Fortline Creek Road (Rd 36)
 - Existing Roads
 - Railroad
 - Lakes/Wetlands
 - 40 ft Contours
- Land Ownership**
- Forest Service Lands
 - State Lands
 - Private Lands



Map A-9. Timber harvest that has occurred as part of the 2007 Trego Project. Red line is the approximate Lime watershed boundary. Base map provided by the Kootenai National Forest from the Trego Decision Notice and Finding of No Significant Impact, February 2007

APPENDIX A - REFERENCES

Montana Department of Environmental Quality, Planning, Prevention and Assistance Division, Water Quality Planning Bureau. 2011. Tobacco Planning Area Sediment TMDLs and Framework Water Quality Improvement Plan: Final. Helena, MT: Montana Department of Environmental Quality. K01-TMDL-03aF.

River Design Group. 2005. Graves Creek Watershed Assessment and Conceptual Design Report. Whitefish, MT: River Design Group, Inc.