

APPENDIX G: SWAN BANK INVENTORY RESULTS

List of Tables

Swan River Bank Stability Assessment Results

List of Maps

In-Channel Erosion: Cilly Creek Quadrangle

In-Channel Erosion: Salmon Prairie Quadrangle

In-Channel Erosion: Swan Lake Quadrangle

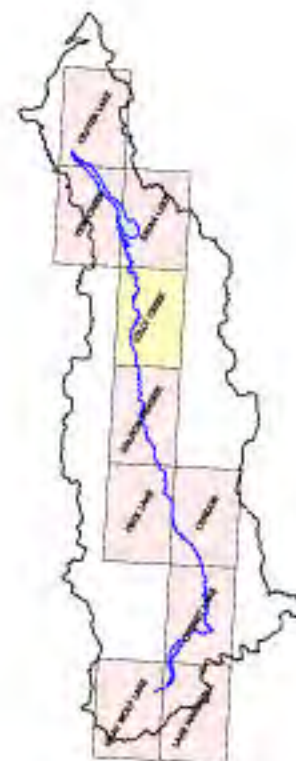
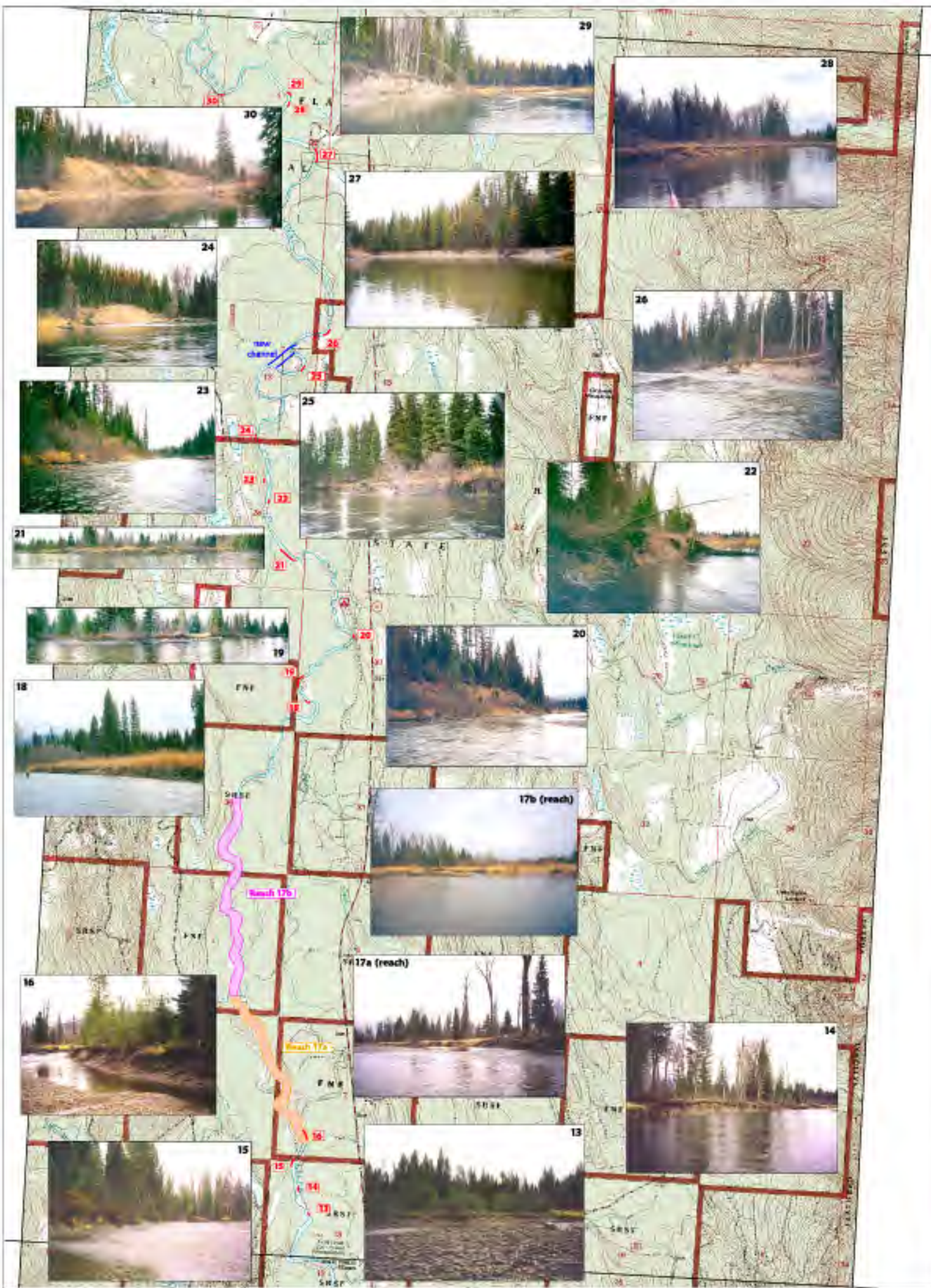
In-Channel Erosion: Yew Creek Quadrangle

Swan River Bank Stability Assessment Results

Bank ID #	Length in ft (Bold text indicates anthropogenic cause)	Average Bank Height (ft)
1	150	5
2	350	25
3	400	35
4	350	5
5	450	3
6	150	60
7	250	10
8	400	12
9	250	12
10	200	7
11	150	10
12	100	4
13	100	4
14	150	7
15	300	9
16	200	6
*18	200	3.5
19	500	4
20	150	60
21	700	5
22	150	5
23	150	35
24	250	45
25	250	5
26	350	8
27	550	8
28	150	4
29	200	7
30	200	60
31	1300	8
32	200	4
33	700	4
34	150	4
35	150	4
36	400	4
37	150	4
38	400	4
39	900	5
40	1000	5
41	150	5
42	250	4
43	250	4
44	150	5
45	300	4
<i>sub total</i>	14200	
Reach 17a	5470.1	
Reach 17b	2588.3	
Total ft unstable	22258.4	

IN - CHANNEL EROSION

CILLY CREEK QUADRANGLE



INDEX MAP

LEGEND

- CUTTING BANKS
- QUAD BOUNDARY
- REACH 17c = 5% UNSTABLE
- REACH 17a = 10% UNSTABLE

700 0 700 1400 Meters

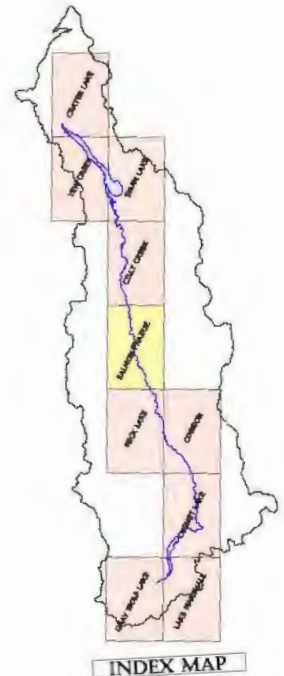
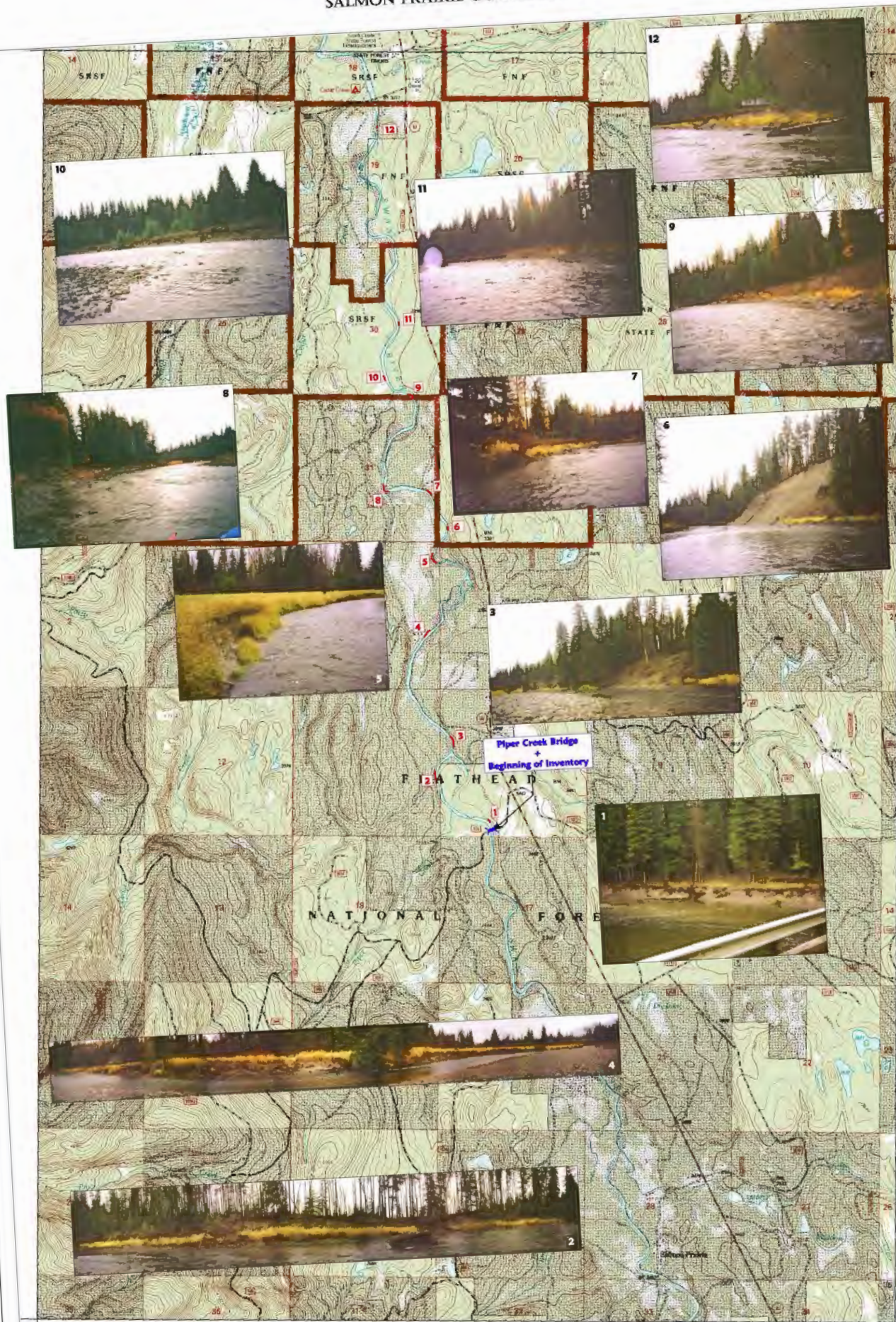
400 0 400 800 1200 Meters

LAND & WATER CONSULTING, INC.

1120 Cedar
PO Box 8234
Missoula, MT 59807



Project #: 110236
Date: November 2001
Location: Swan River Basin
Project Manager: P. Colahan
Drawn By: S. Noecker

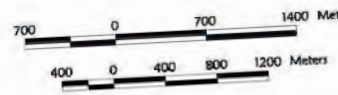
IN - CHANNEL EROSION SALMON PRAIRIE QUADRANGLE



INDEX MAP

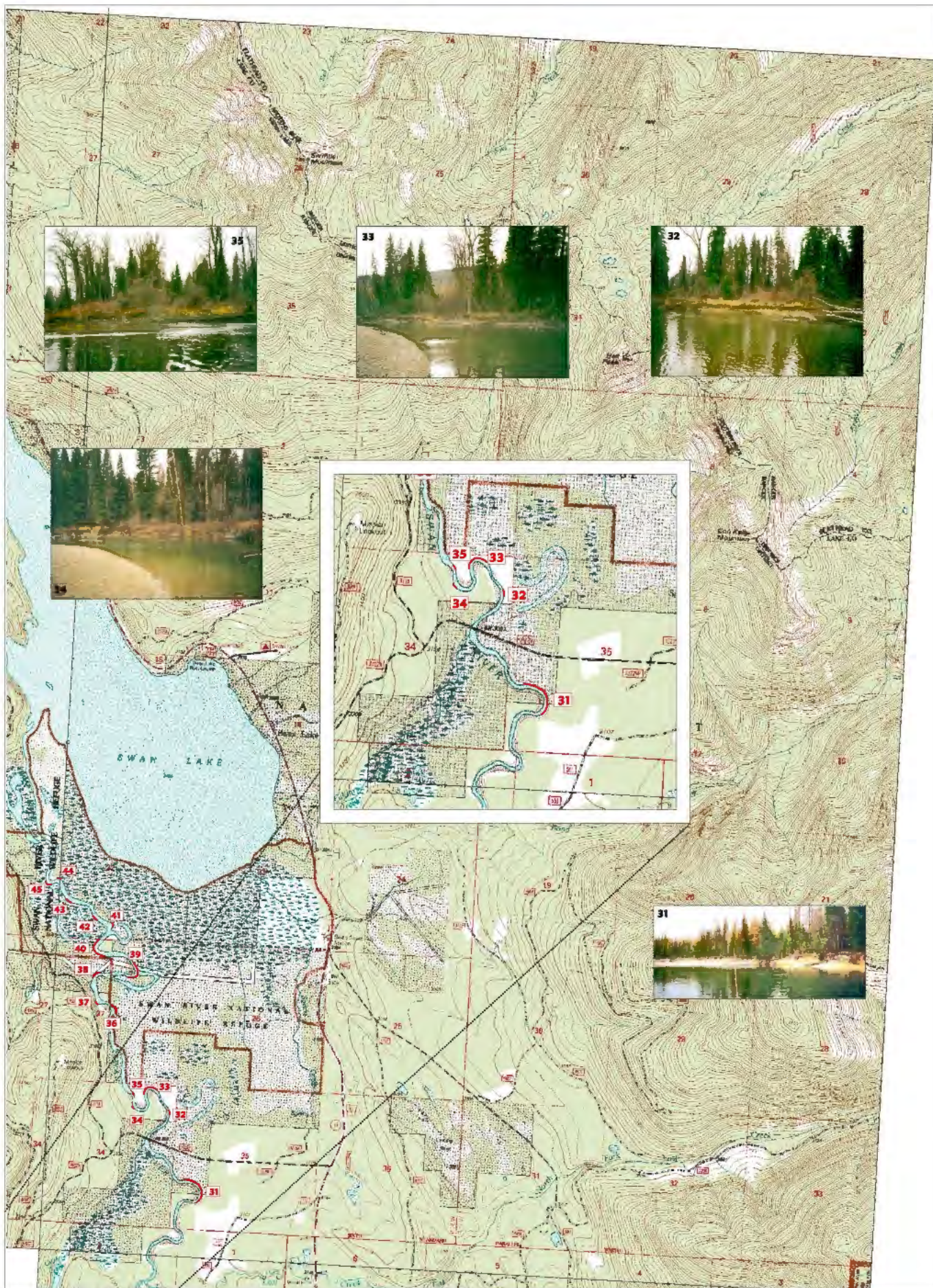
LEGEND

-  CUTTING BANKS
-  QUAD BOUNDARY



IN - CHANNEL EROSION

SWAN LAKE QUADRANGLE



INDEX MAP

LEGEND

-  CUTTING BANKS
-  QUAD BOUNDARY

700 0 700 1400 Meters

400 0 400 800 1200 Meters

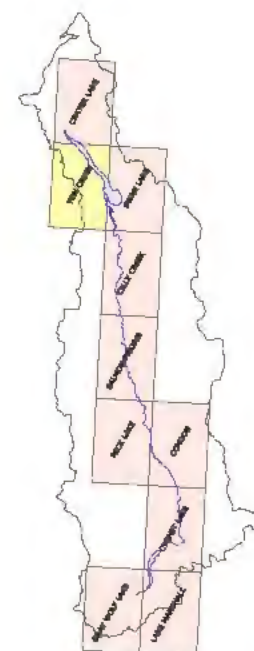
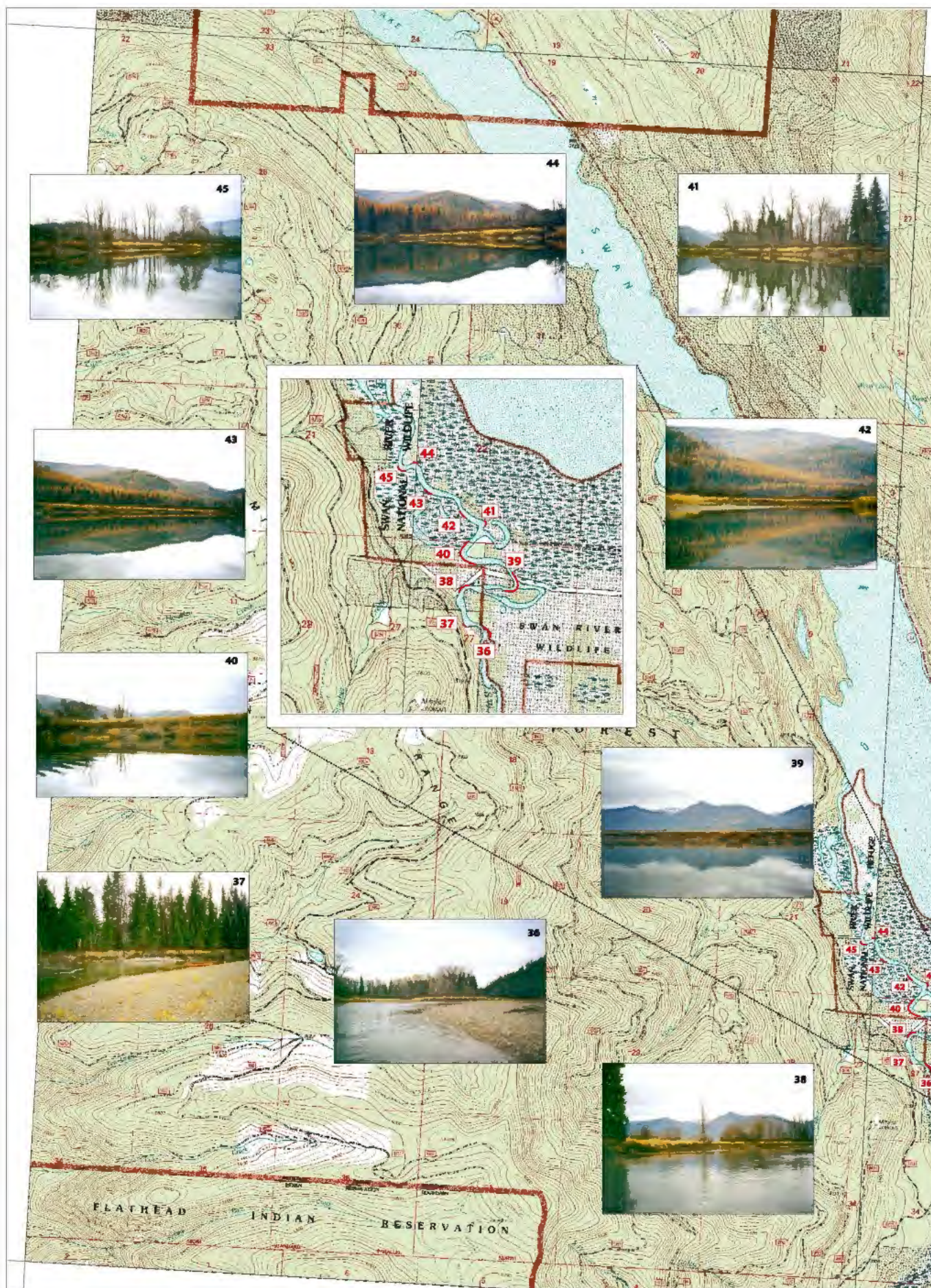
LAND & WATER CONSULTING, INC.

1120 Cedar
PO Box 8254
Missoula, MT 59807

Project #: 110236
Date: November 2001
Location: Swan River Basin
Project Manager: P. Callahan
Drawn By: B. Noecker

IN - CHANNEL EROSION

YEW CREEK QUADRANGLE



INDEX MAP

LEGEND

-  CUTTING BANKS
-  QUAD BOUNDARY

700 0 700 1400 Meters

400 0 400 800 1200 Meters