

APPENDIX A
MAPS

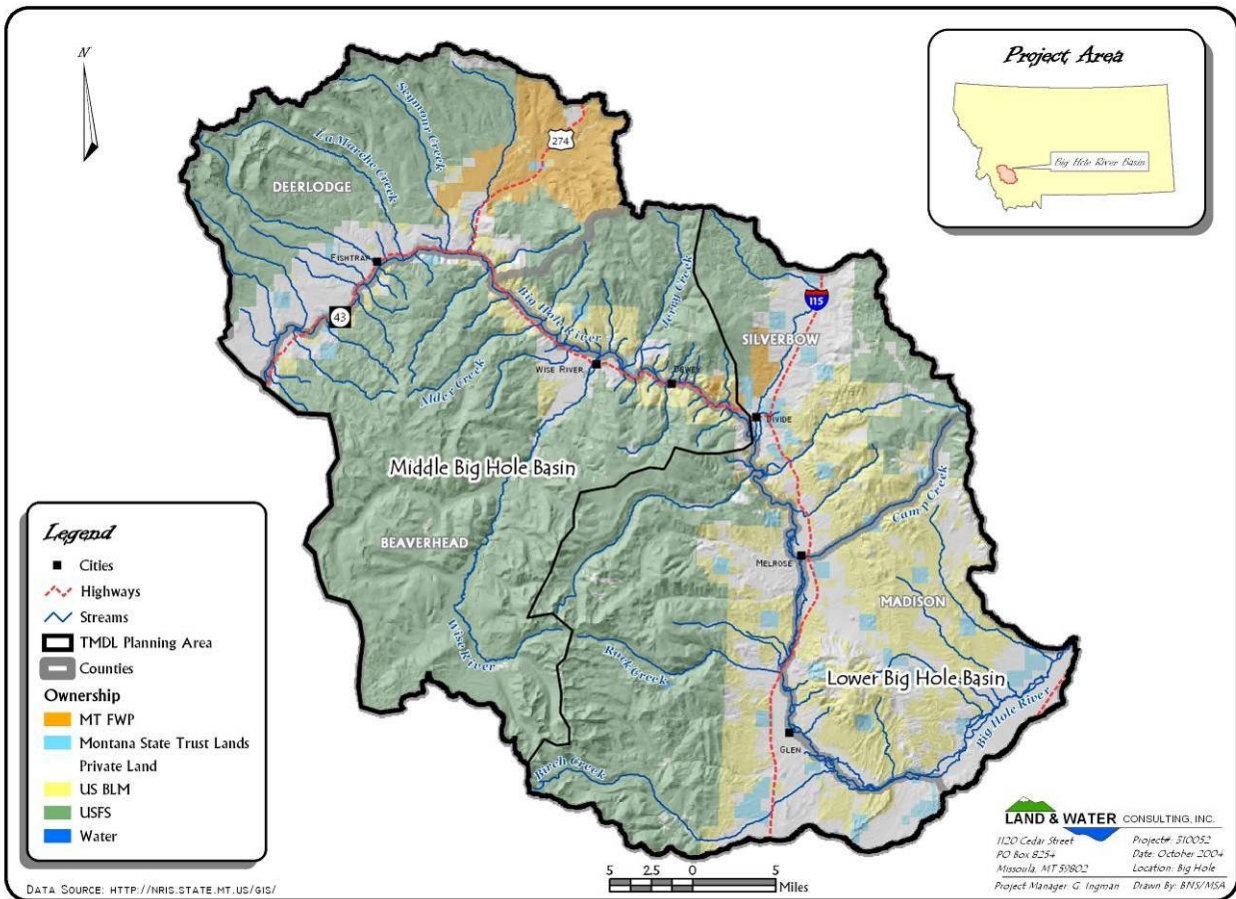


Figure A-1. Middle and Lower Big Hole River TDML Planning Area.

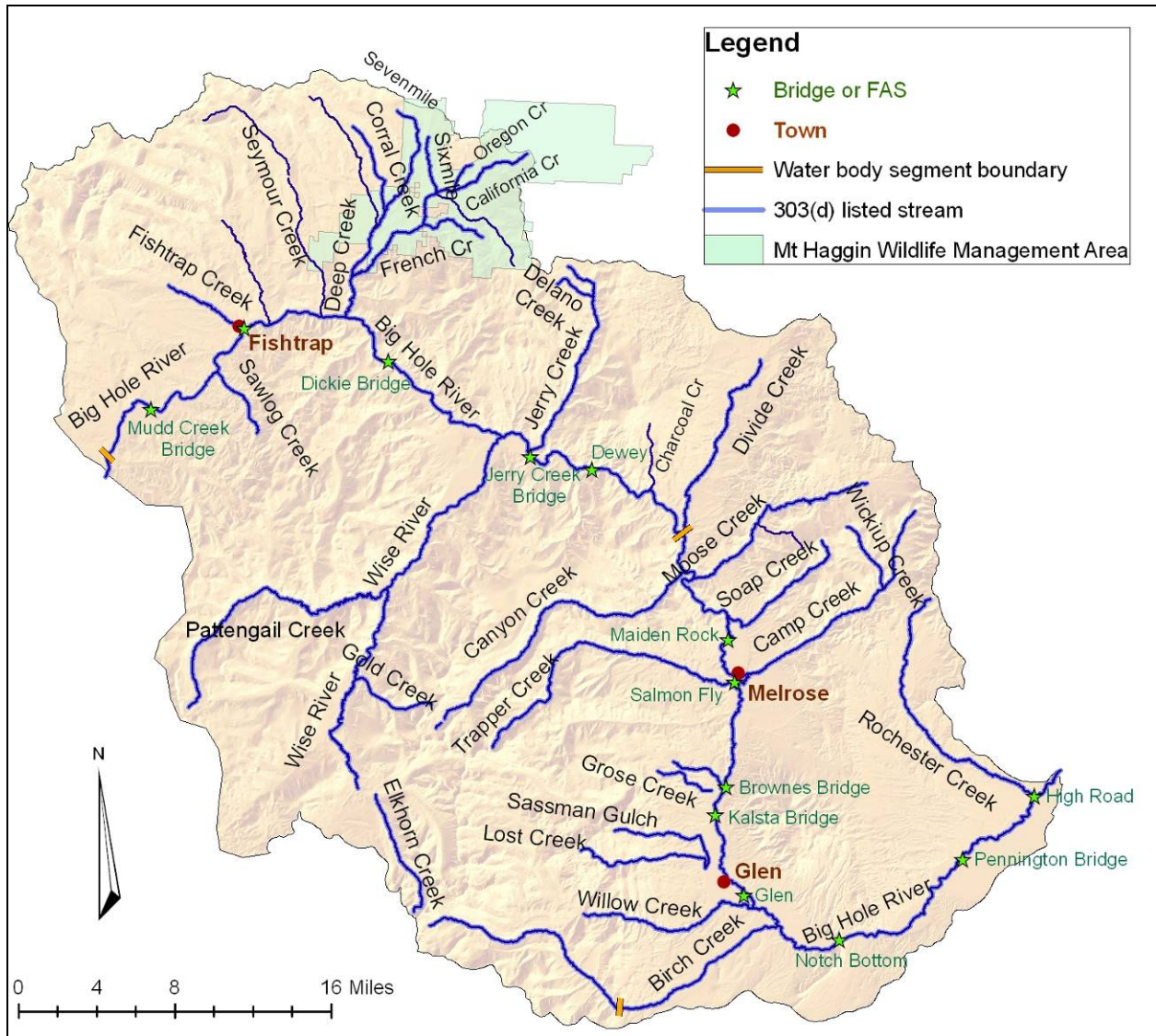


Figure A-2. 303(d) Listed water bodies in the Middle and Lower Big Hole TPA.

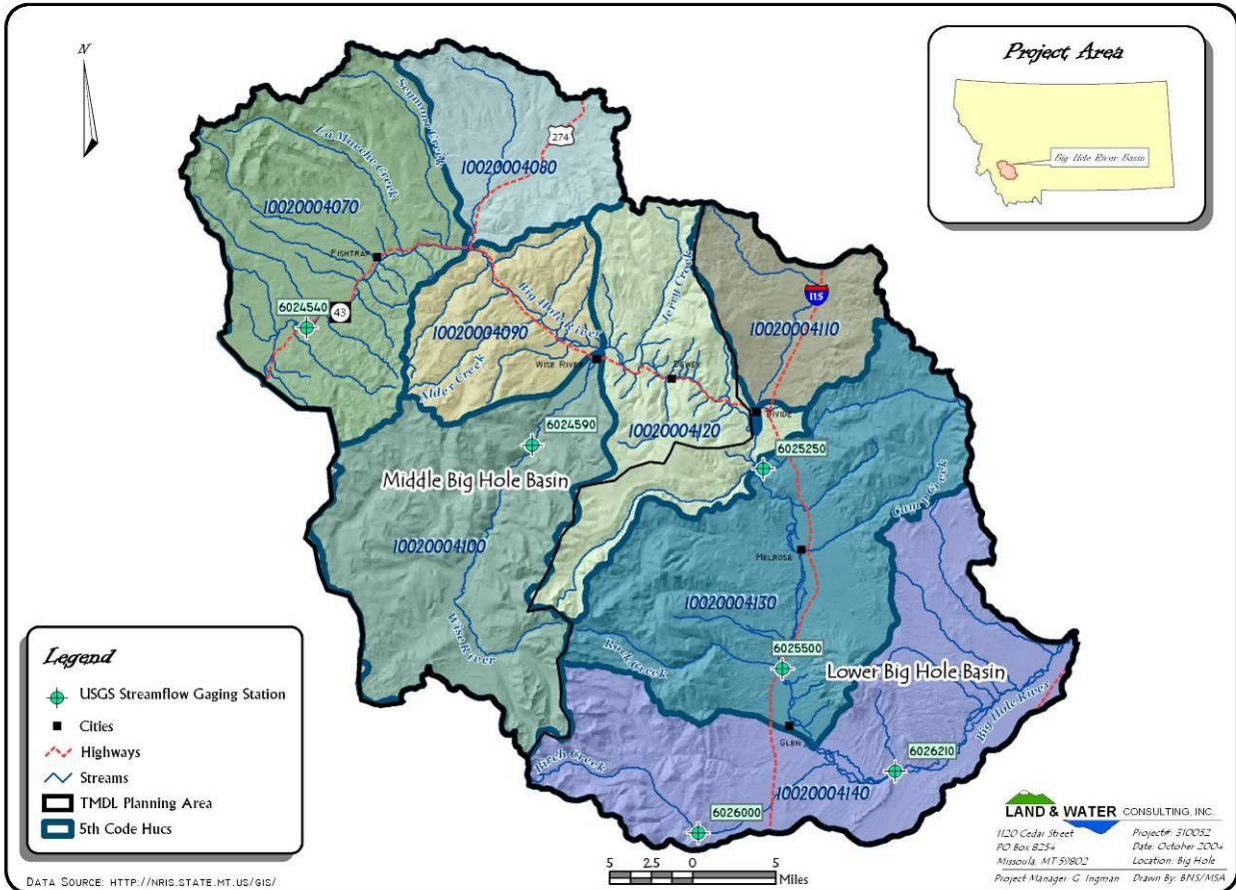


Figure A-3. USGS gauging stations in the Middle and Lower Big Hole TPA.

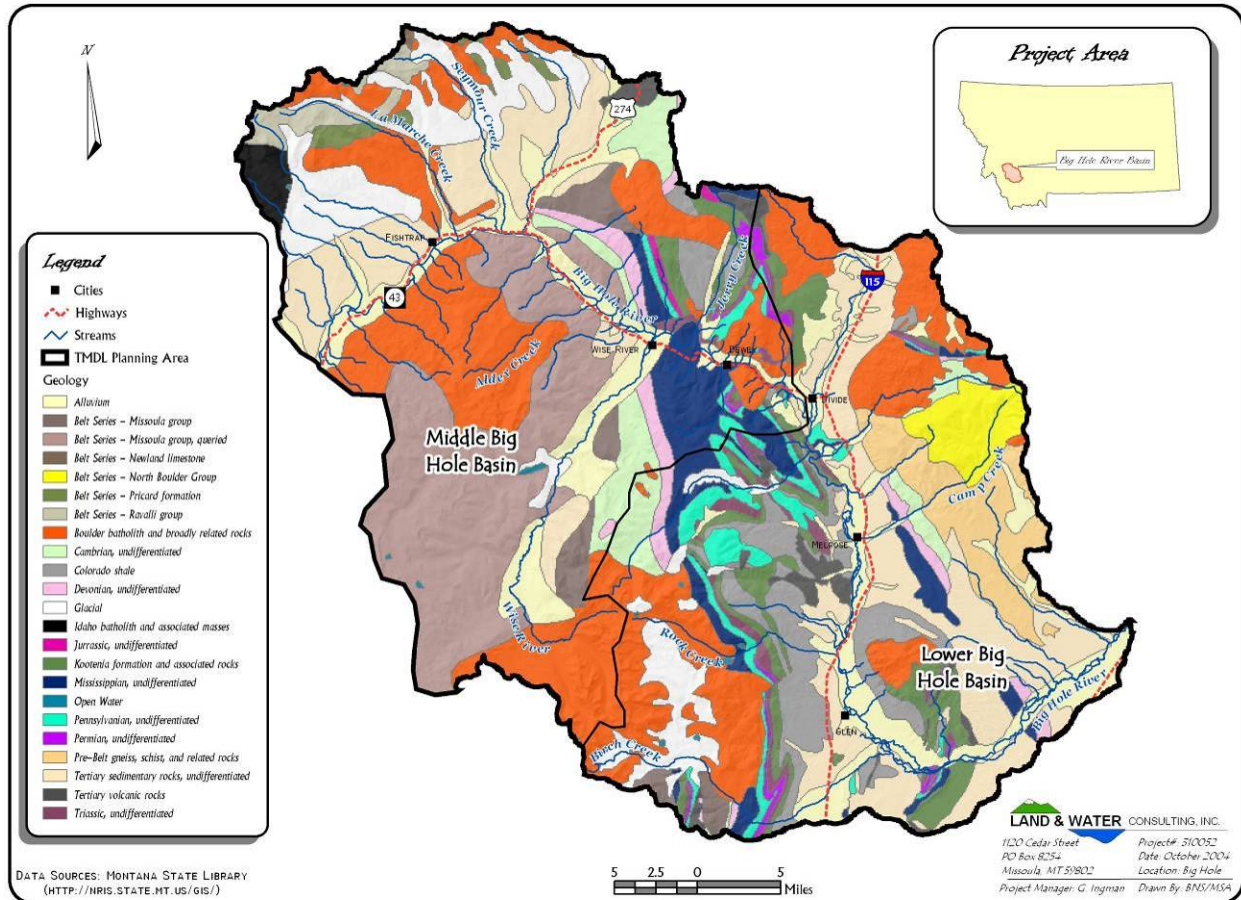


Figure A-4. Geology in the Middle and Lower Big Hole TPA.

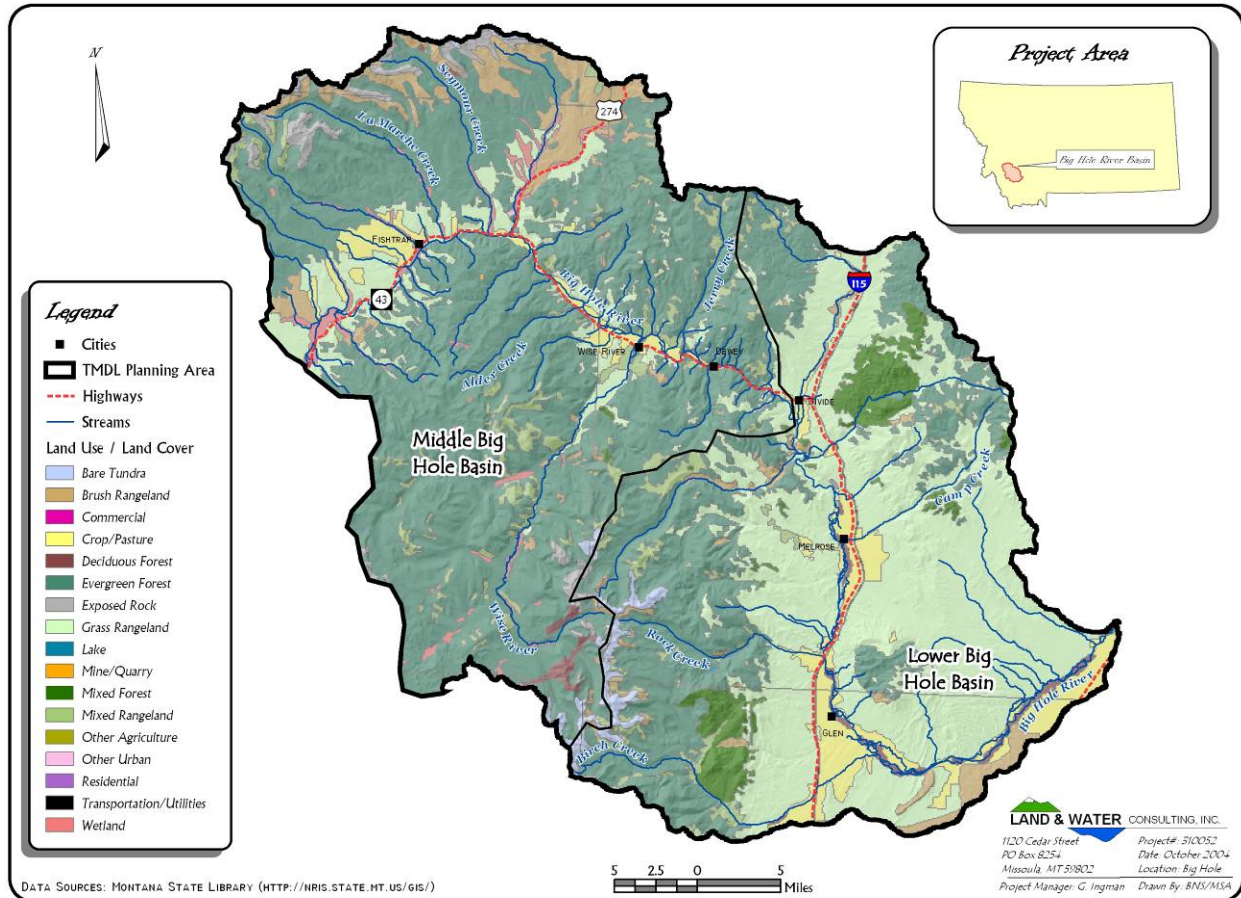


Figure A-5. Land use and land cover in the Middle and Lower Big Hole TPA.

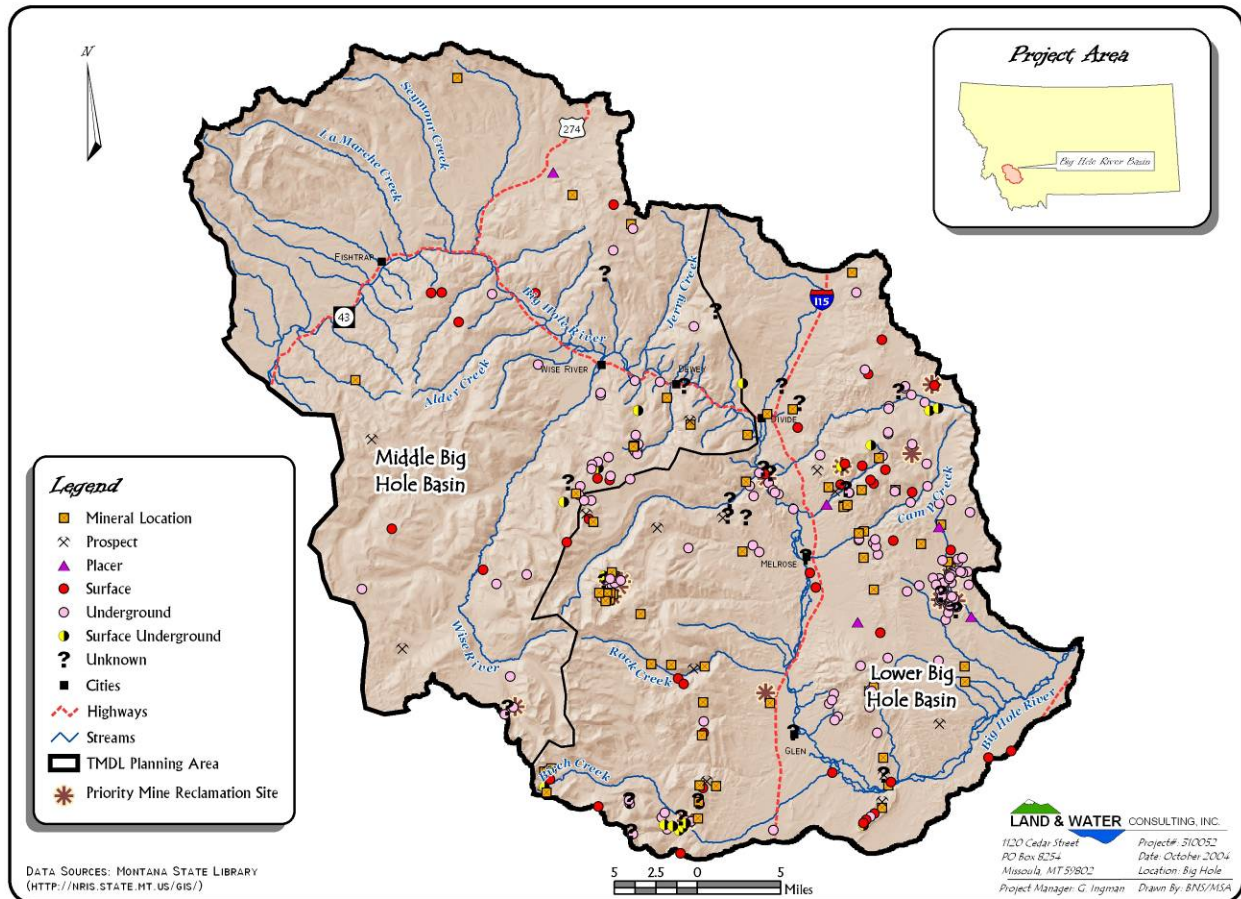


Figure A-6. Abandoned mines, including priority abandoned mines, within the Middle and Lower Big Hole River TPA.

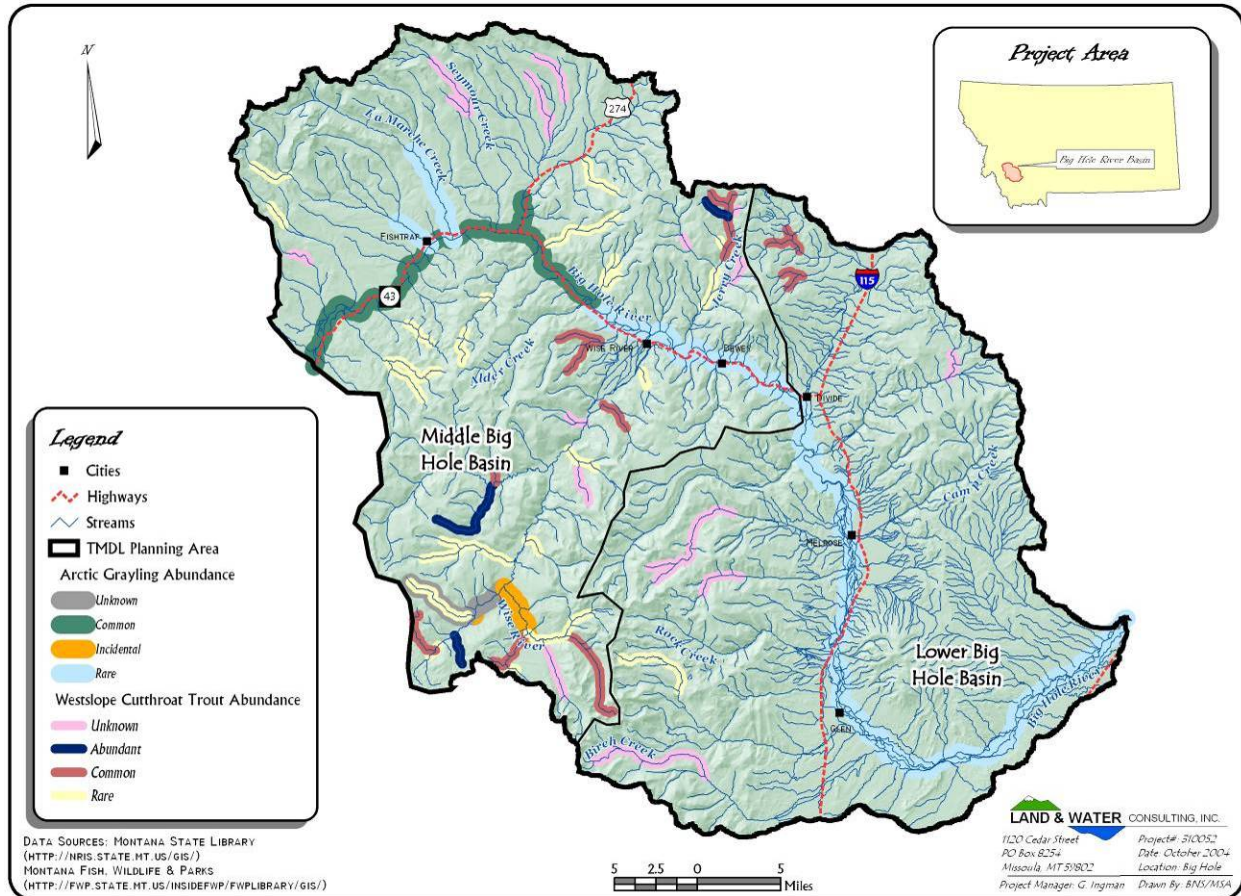


Figure A-7. Westslope Cutthroat Trout and Arctic Grayling Distribution in the Middle and Lower Big Hole River TPA.

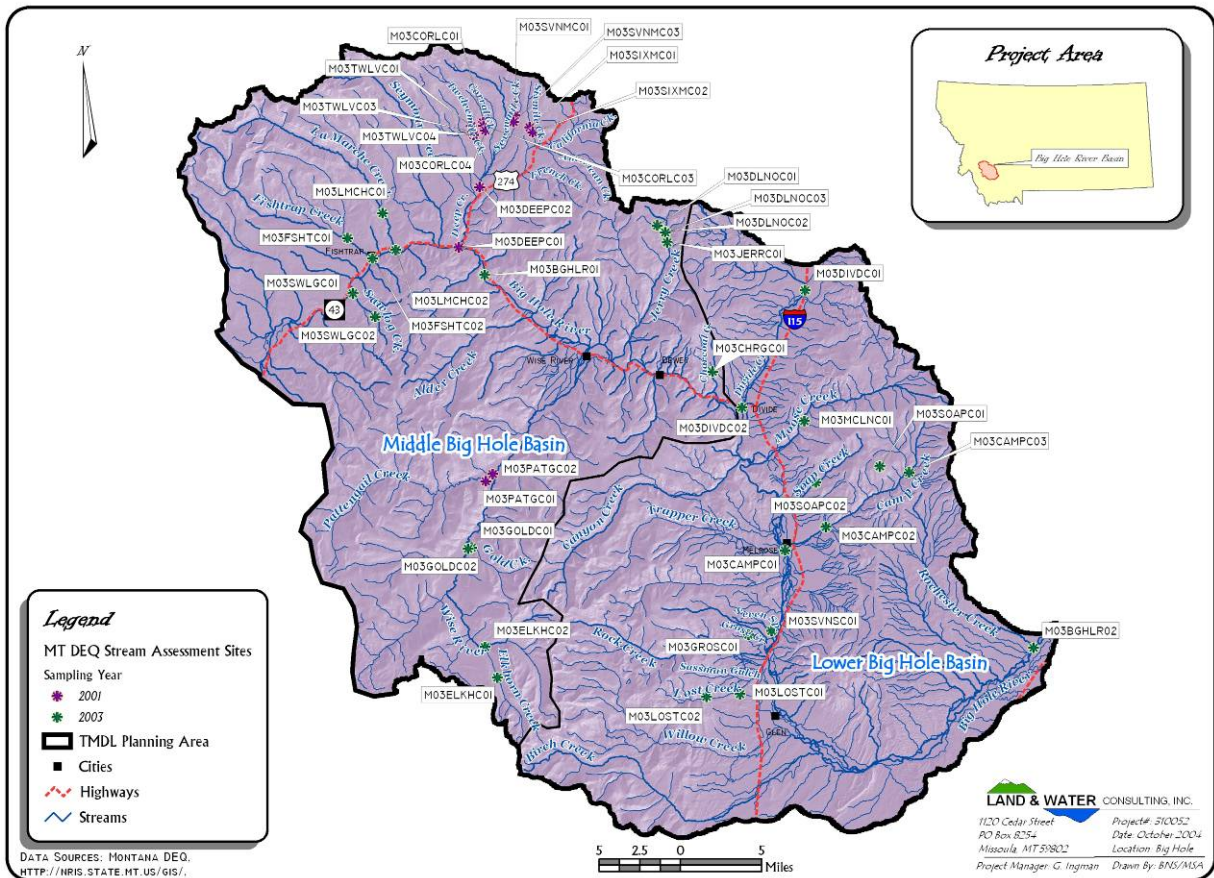


Figure A-8. DEQ monitoring sites in the Middle and Big Hole TPA.

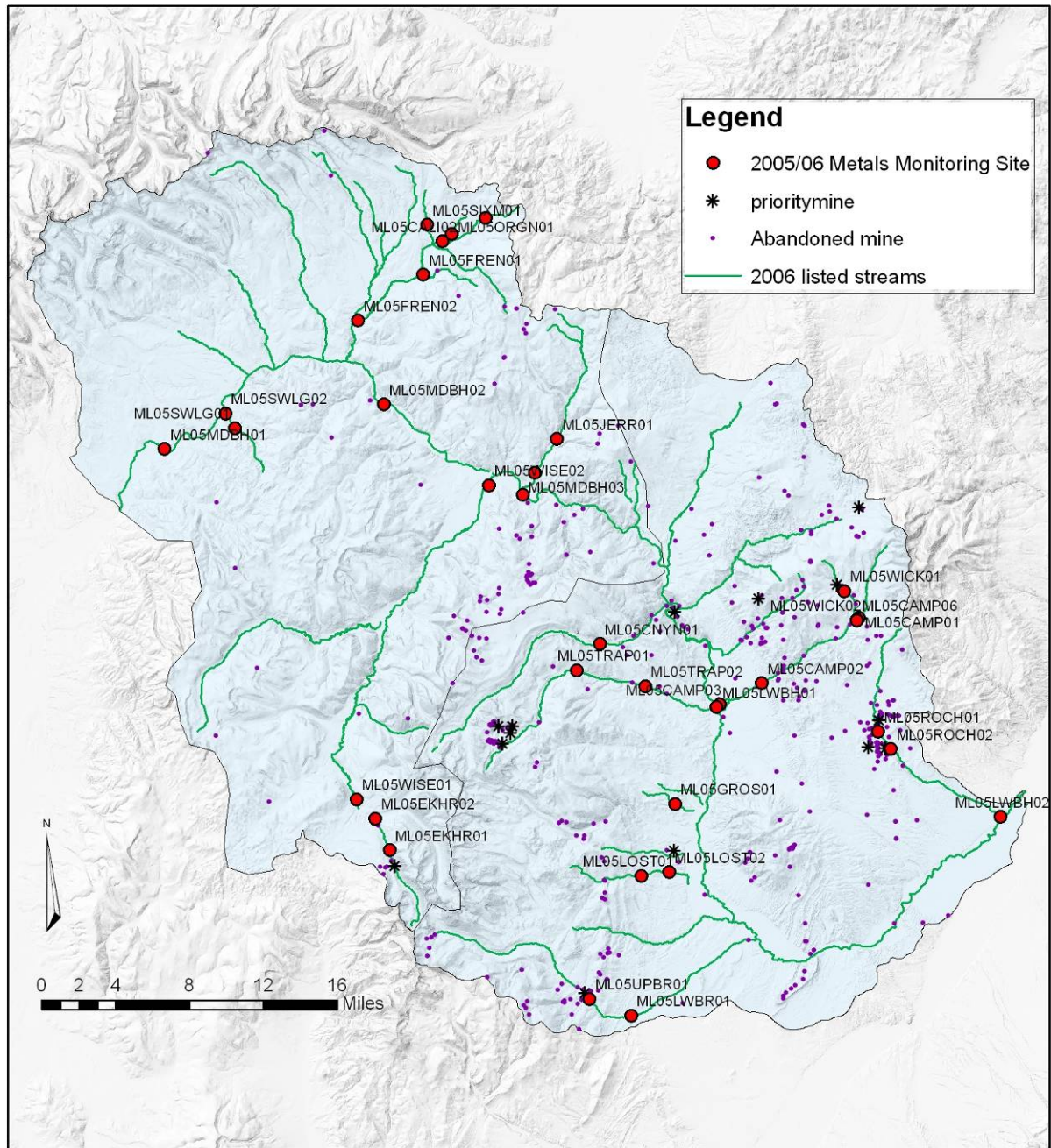


Figure A-9. 2005-2006 DEQ metals monitoring sites.

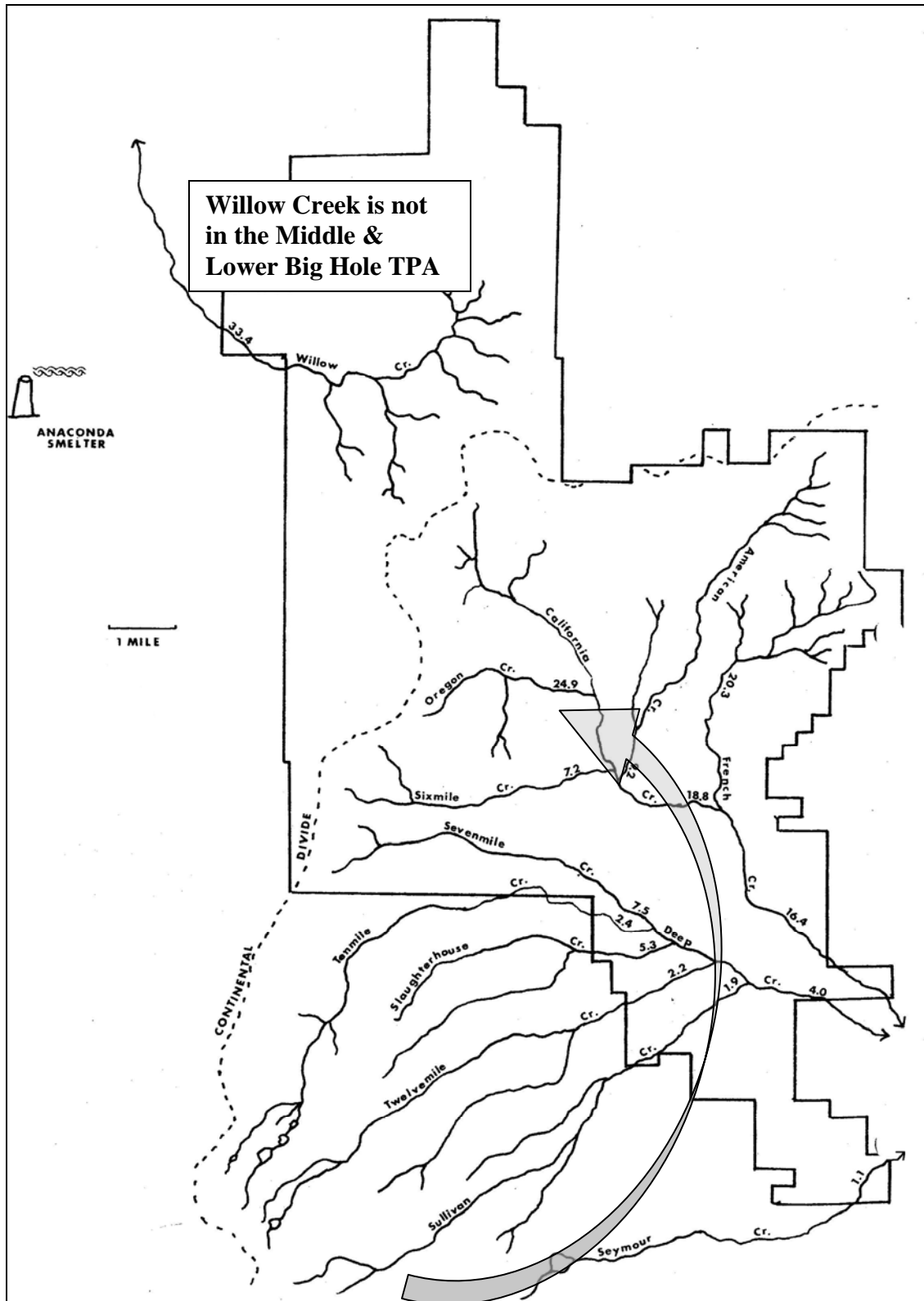


Figure A-10. Average concentration of dissolved arsenic (ug/L) in Mt. Haggin streams relative to the location of the Anaconda Smelter (adapted from Oswald, 1981). Arrow indicates direction of increase in concentration.

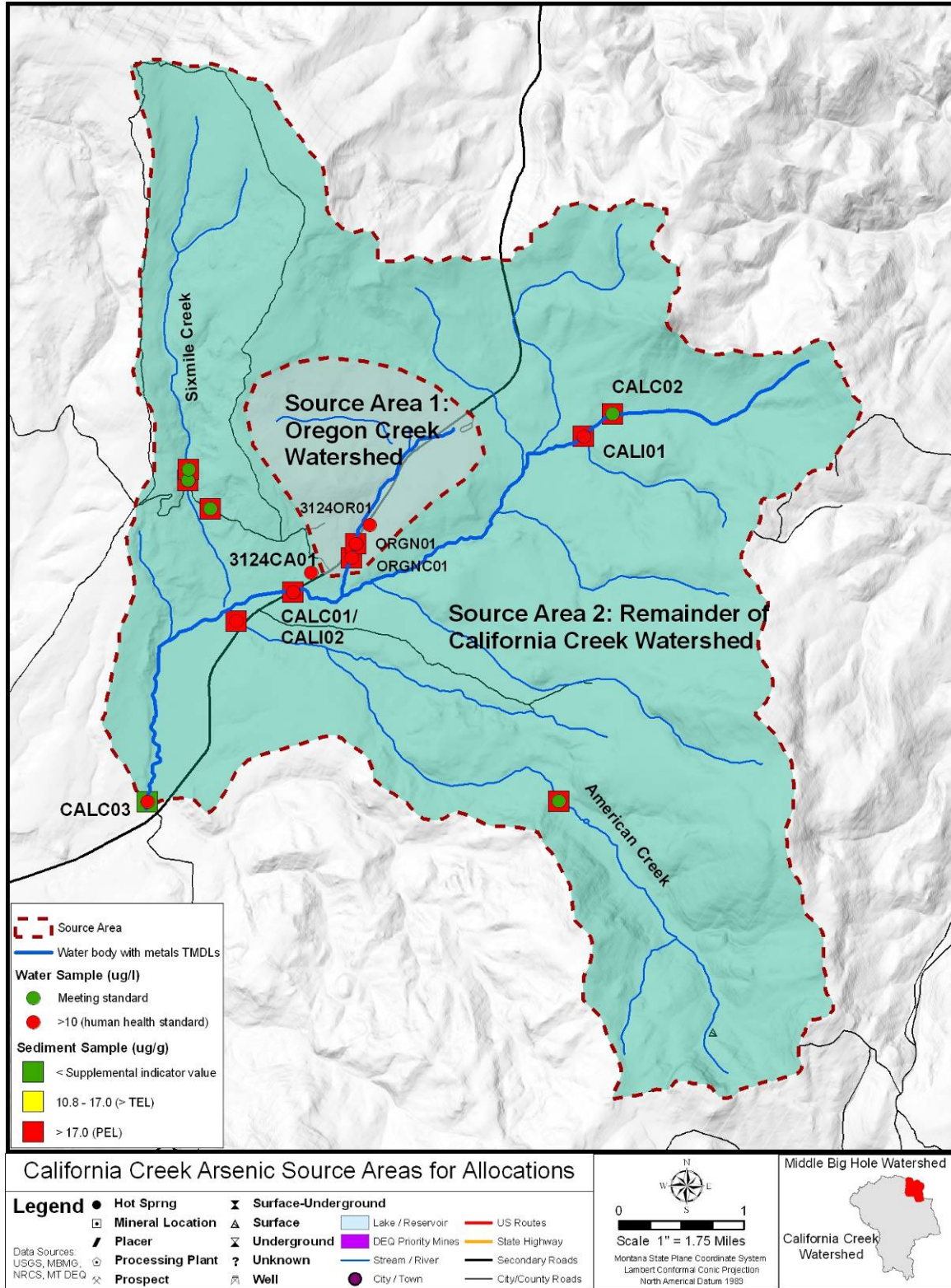


Figure A-11. Metals sampling locations and loading source area for California Creek.

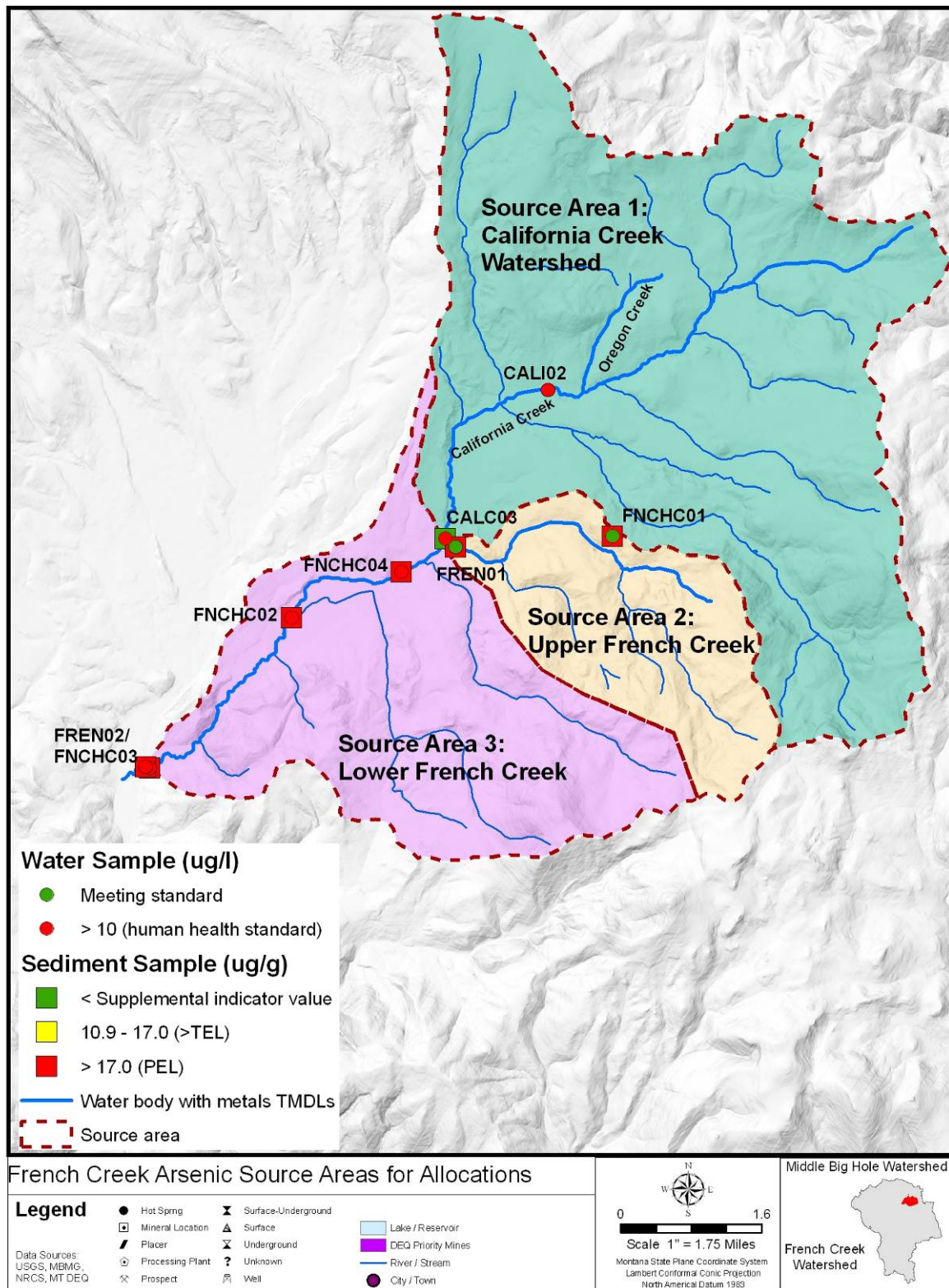


Figure A-12. Metals sampling locations and loading source area for French Creek.

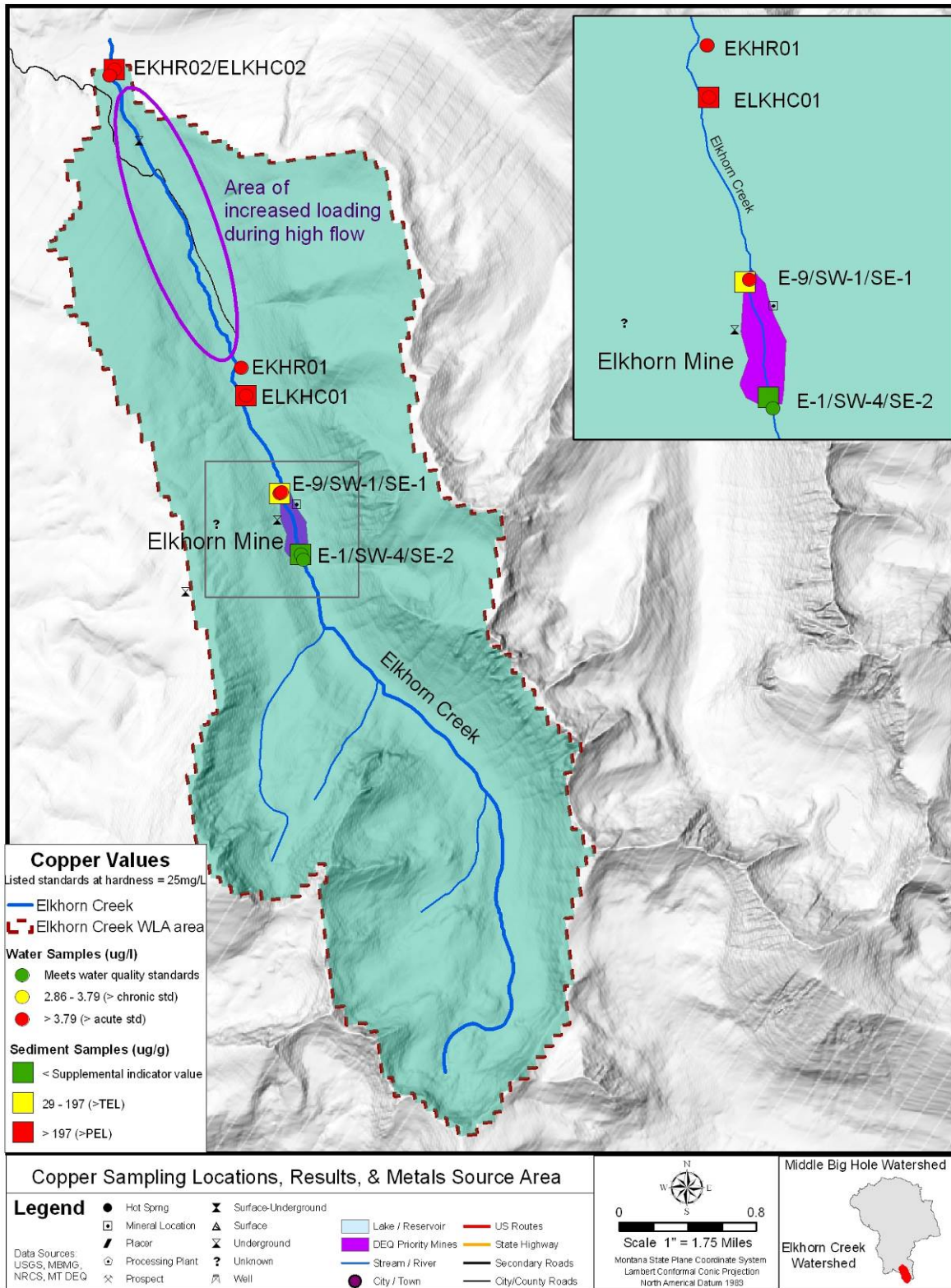


Figure A-13. Metals sampling locations and loading source area for Elkhorn Creek.

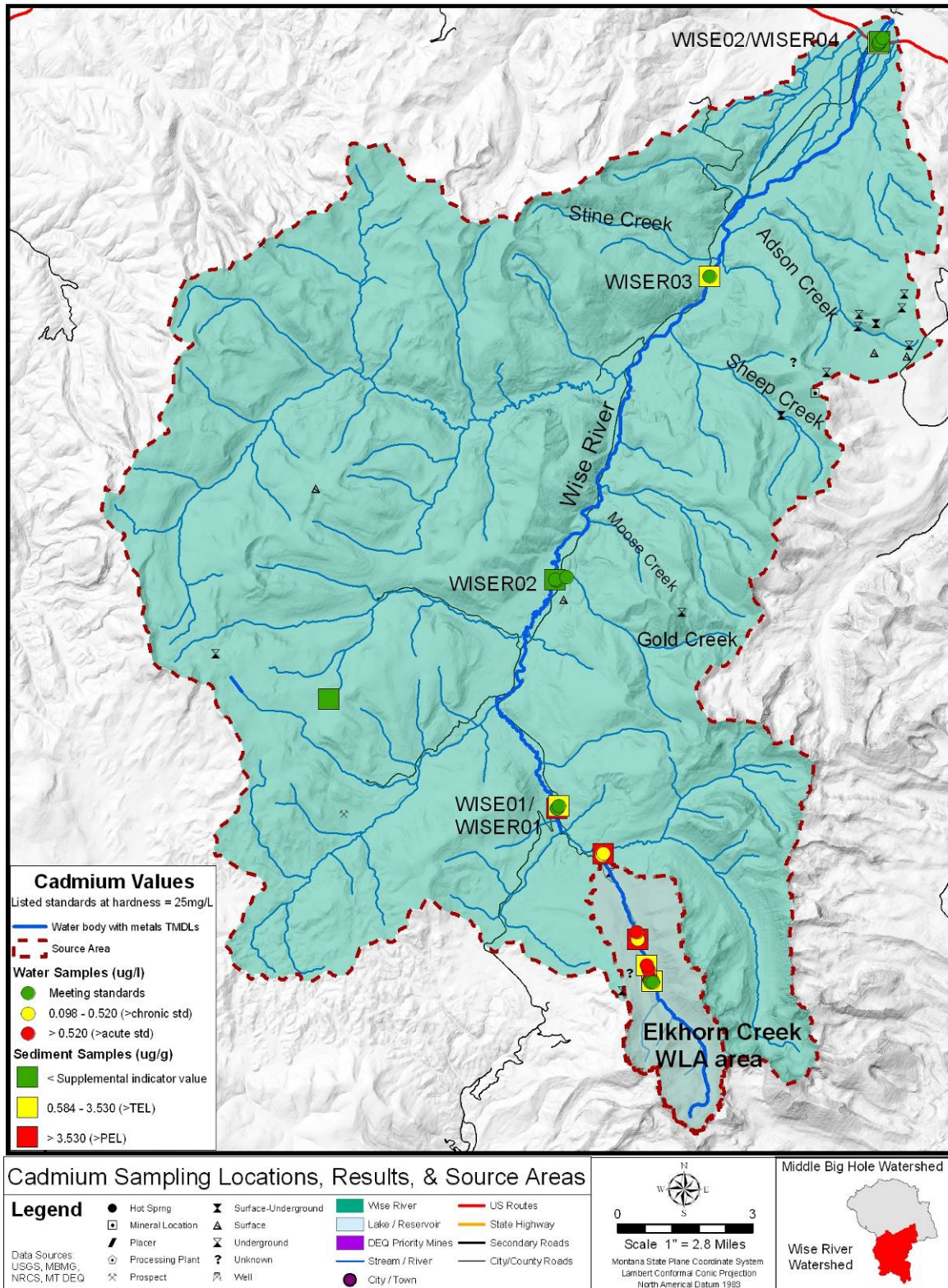


Figure A-14. Metals sampling locations and loading source area for the Wise River.

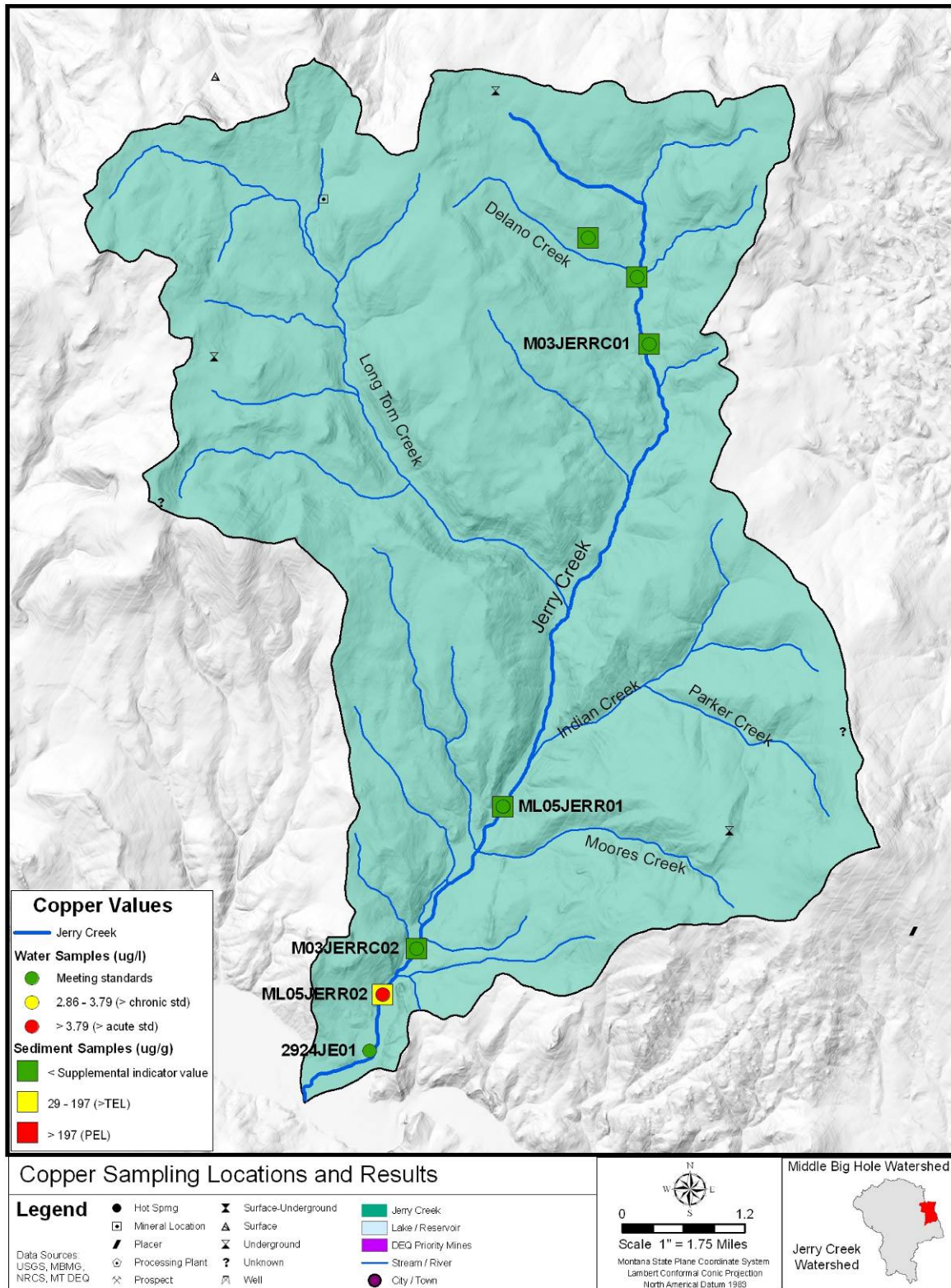


Figure A-15. Metals sampling locations and loading source area for Jerry Creek.

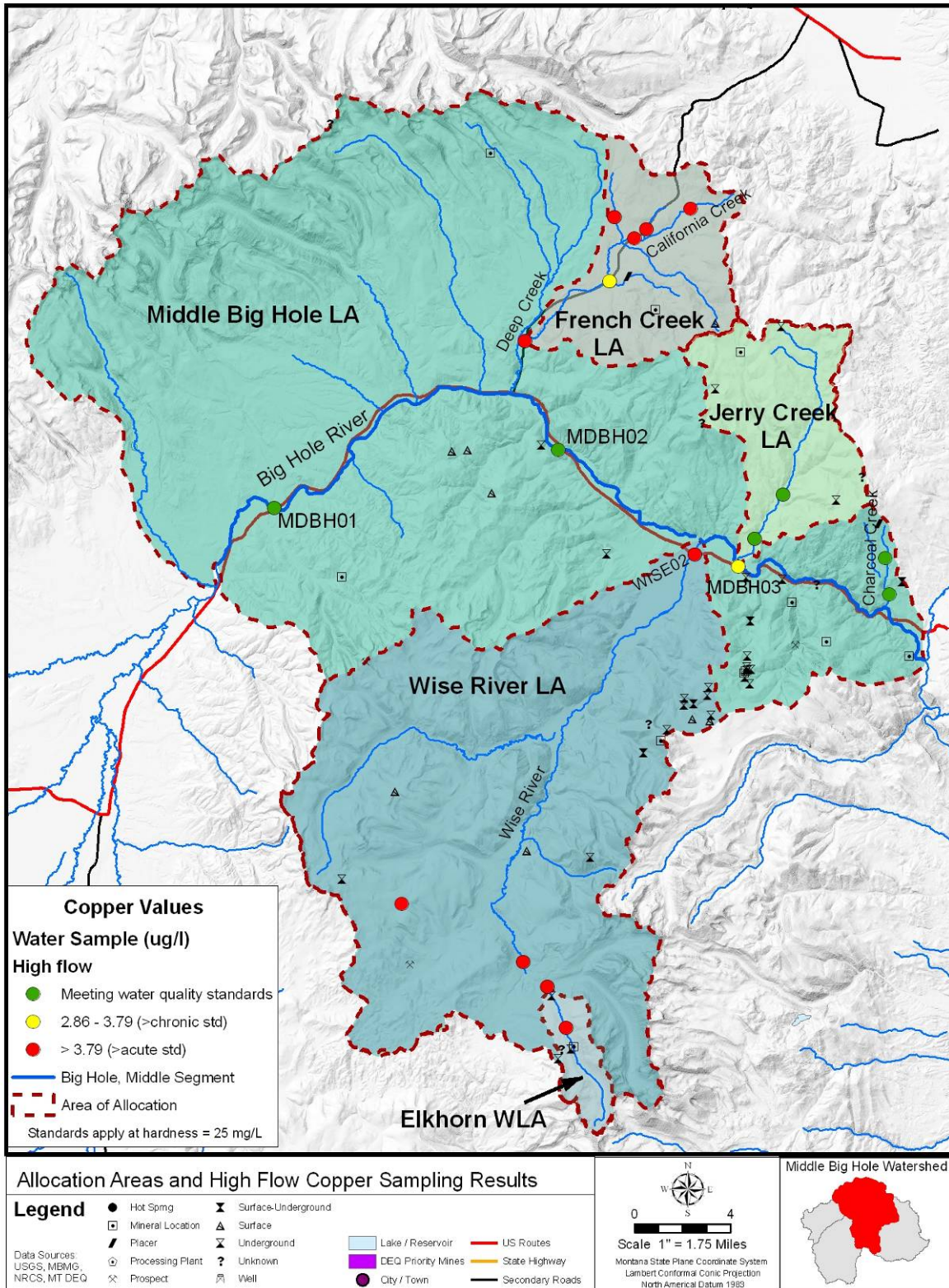


Figure A-16. Metals sampling locations and loading source area for the middle segment of the Big Hole River.

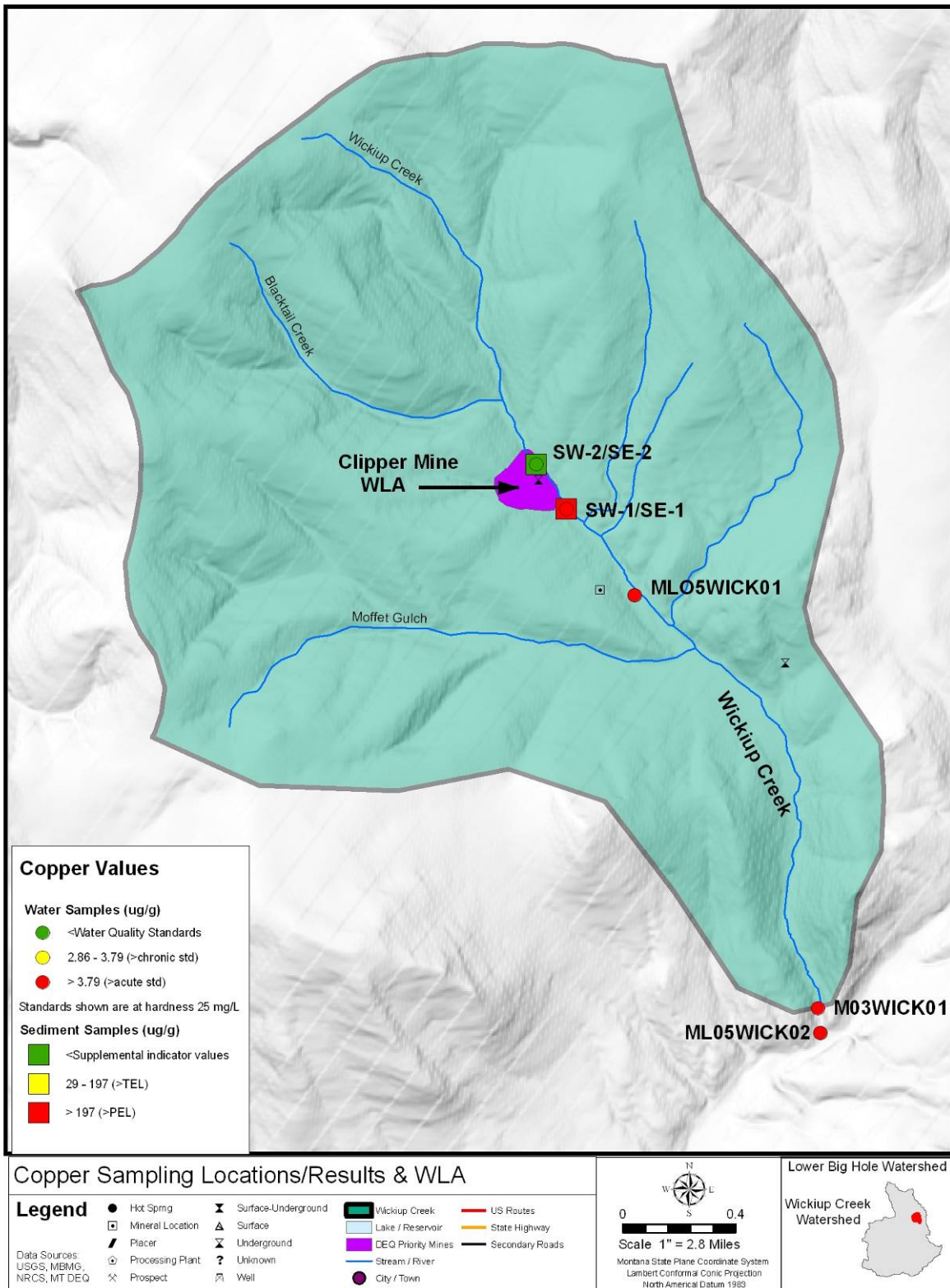


Figure A-17. Metals sampling locations and loading source area for Wickiup Creek.

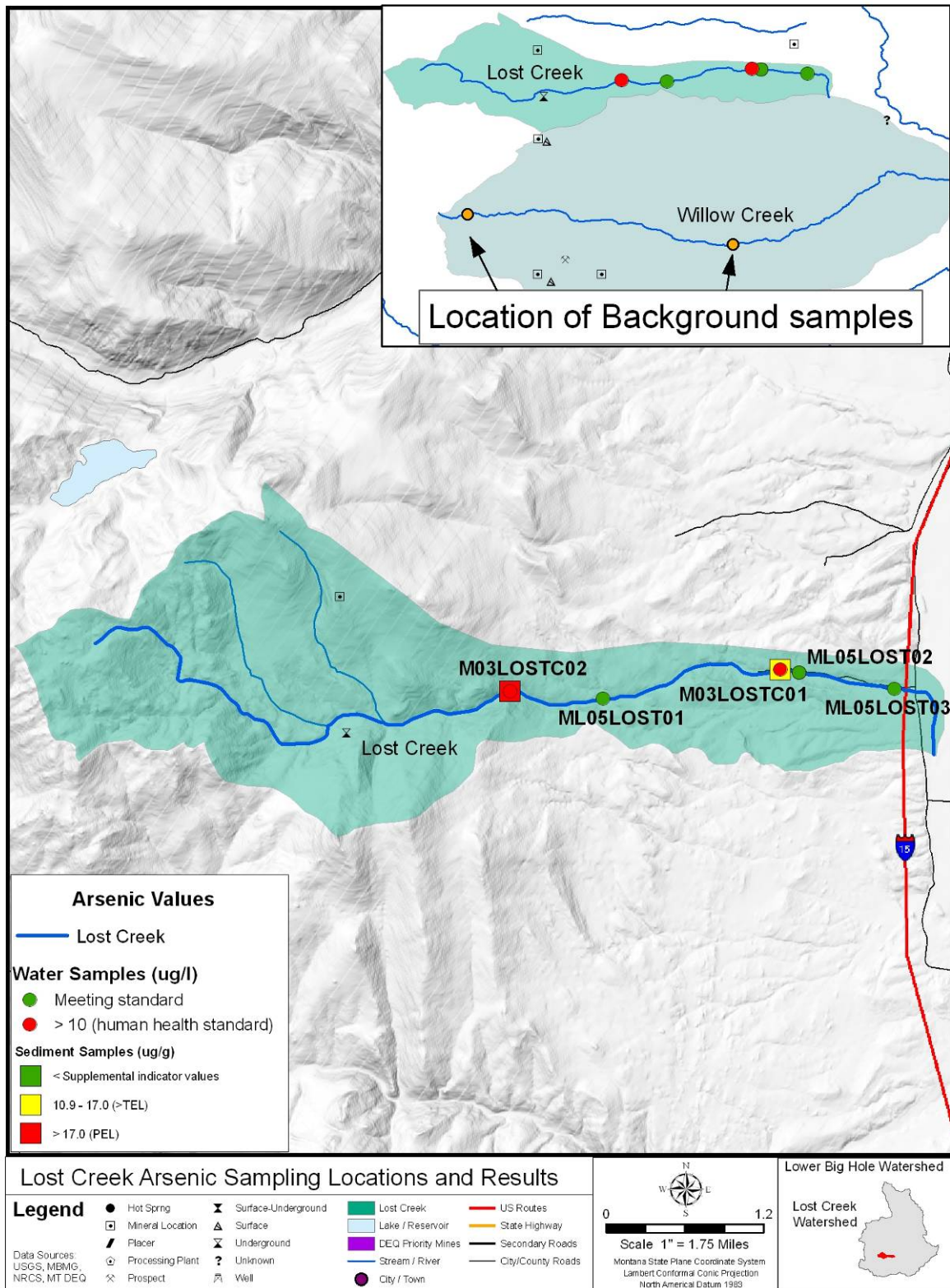


Figure A-18. Metals sampling locations and loading source area for Lost Creek.

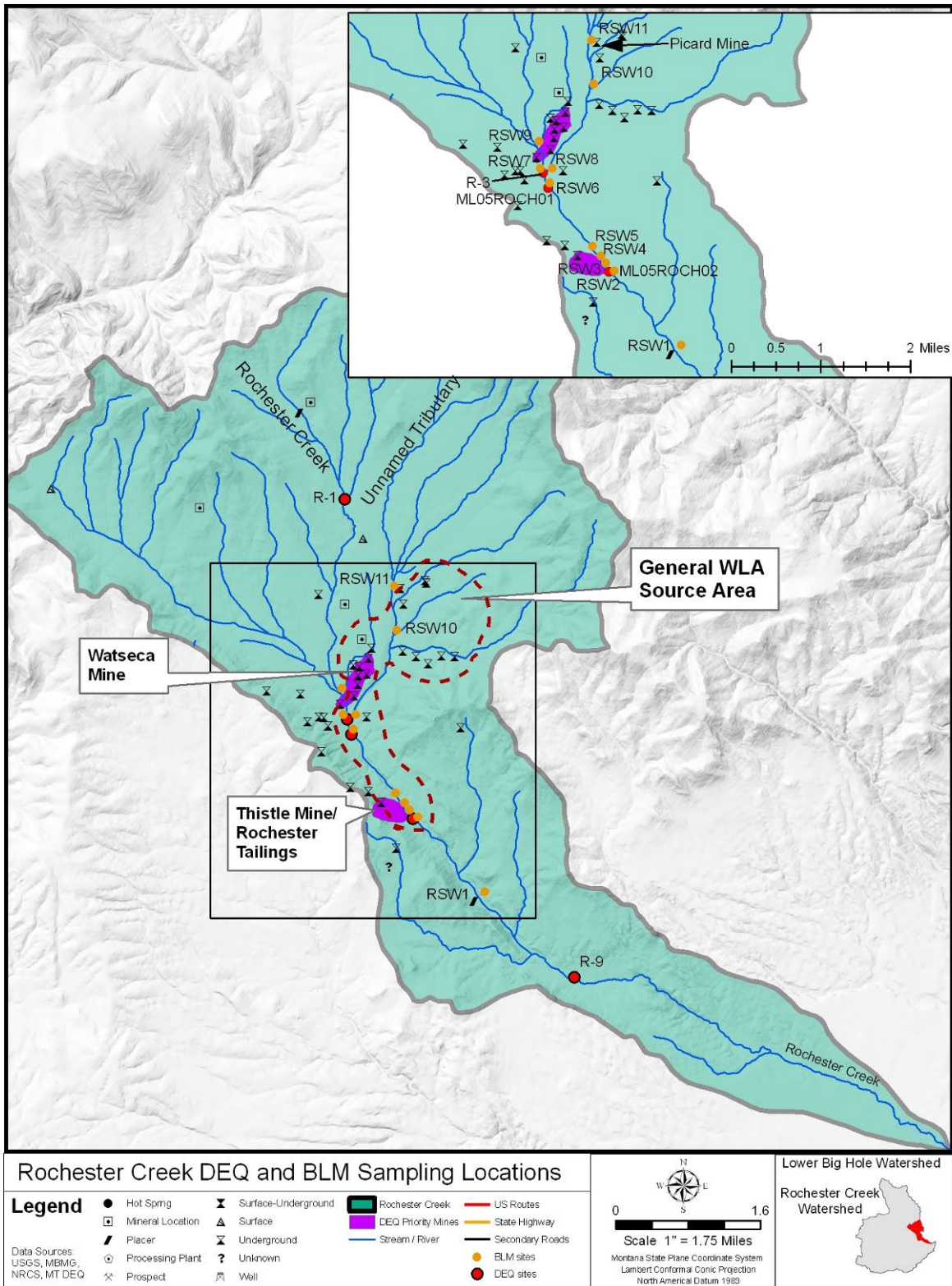


Figure A-19. Metals sampling locations and loading source area for Rochester Creek.

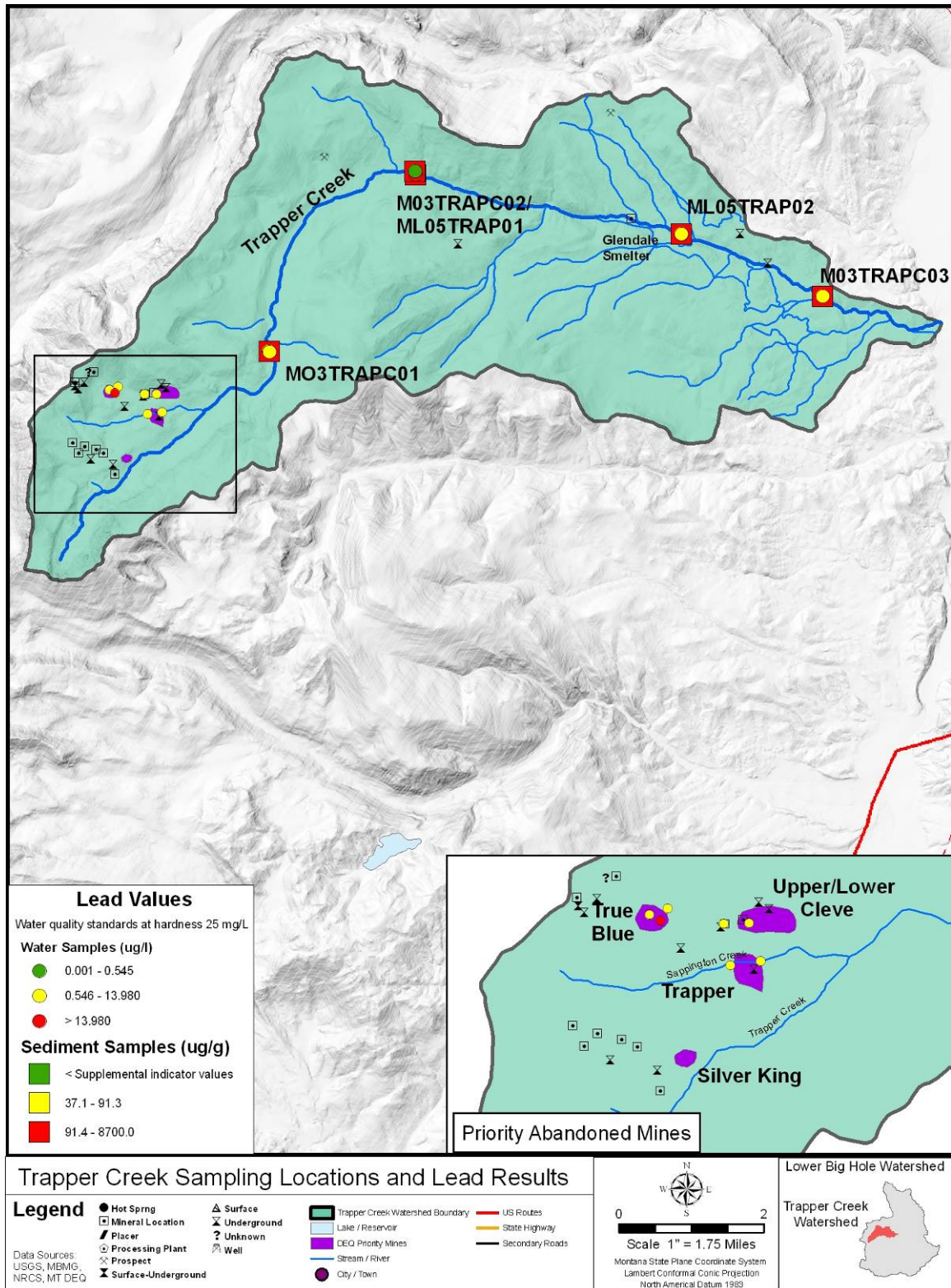


Figure A-20. Metals sampling locations and loading source area for Trapper Creek.

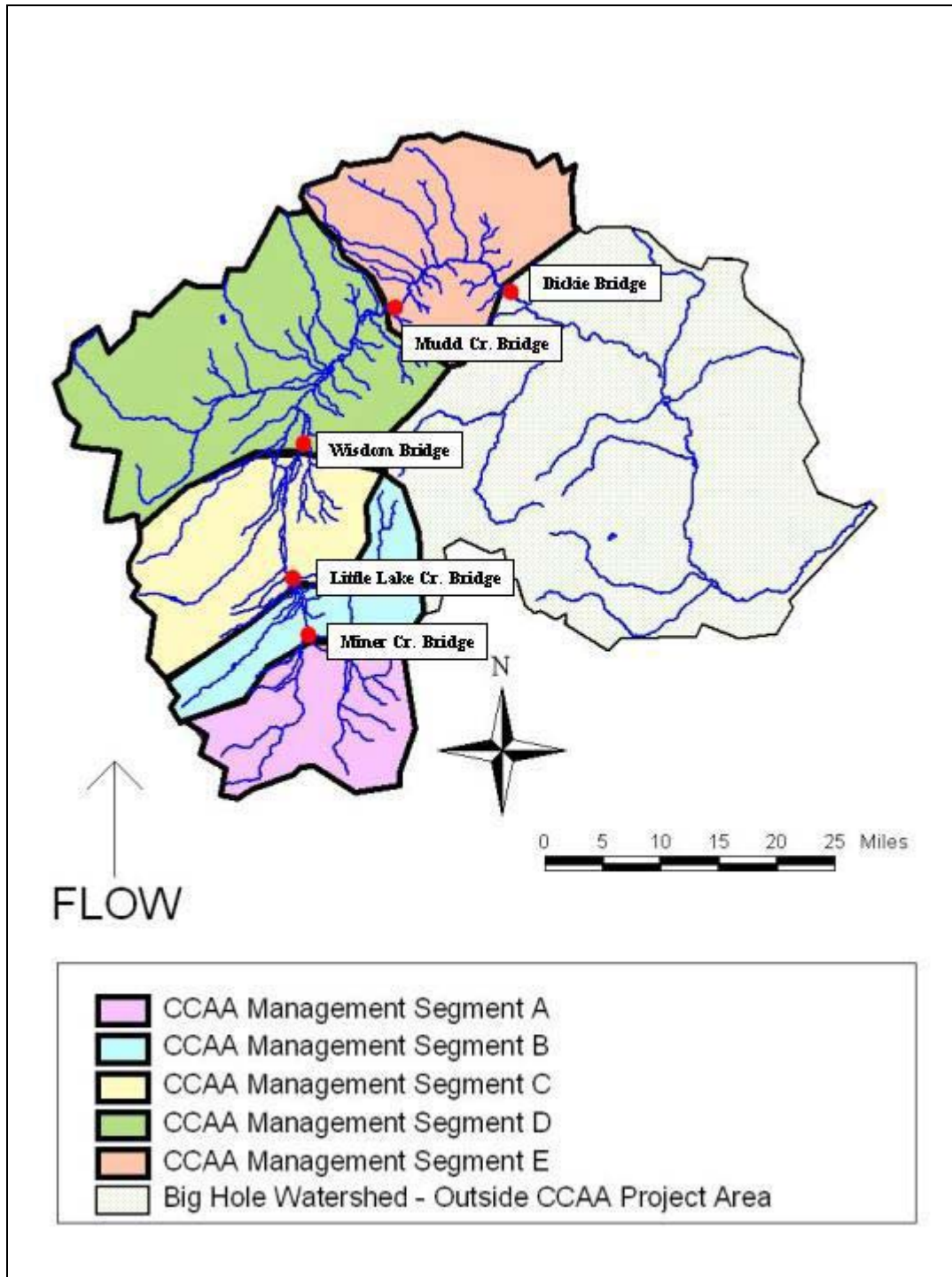


Figure A-21. Boundaries of CCAA Agreement showing separate management areas (FWP et al 2006)