

APPENDIX A – MAPS

LIST OF TABLES

Table A-1. Fire History in the East Fork Yaak River Watershed A-21

LIST OF FIGURES

Figure A-1. Map of the Location of the Yaak TPA and East Fork Yaak River Watershed in Montana A-2
 Figure A-2. Map of 303(d) Listed Streams in the East Fork Yaak River Watershed A-3
 Figure A-3. Map of the Level IV Ecoregions in the East Fork Yaak River Watershed A-4
 Figure A-4. Map of the Average Annual Precipitation in the East Fork Yaak River Watershed A-5
 Figure A-5. Map of the Elevation in the East Fork Yaak River Watershed A-6
 Figure A-6. Map of the Land Slope in the East Fork Yaak River Watershed A-7
 Figure A-7. Map of the Geology of the East Fork Yaak River Watershed A-8
 Figure A-8. Map of the Soils in the East Fork Yaak River Watershed A-9
 Figure A-9. Map of the Soil Erodibility (K factor) in the East Fork Yaak River Watershed A-10
 Figure A-10. Map of the Soil Permeability in the East Fork Yaak River Watershed A-11
 Figure A-11. Map of Land Ownership in the East Fork Yaak River Watershed A-12
 Figure A-12. Map of Land Cover in the East Fork Yaak River Watershed A-13
 Figure A-13. Map of Grazing Allotments in the East Fork Yaak River Watershed A-14
 Figure A-14. Map of Population Densities in the East Fork Yaak River Watershed A-15
 Figure A-15. Map of Septic Tank Densities in the East Fork Yaak River Watershed A-16
 Figure A-16. Map of the Transportation Network in the East Fork Yaak River Watershed A-17
 Figure A-17. Map of the Fish Species of Concern in the East Fork Yaak River Watershed A-18
 Figure A-18. Map of the Nutrient Sample Sites in the East Fork Yaak River Watershed A-19
 Figure A-19. Map of the Fire History in the East Fork Yaak River Watershed A-20
 Figure A-20. Map of the Abandoned and Inactive Mines in the East Fork Yaak River Watershed A-22

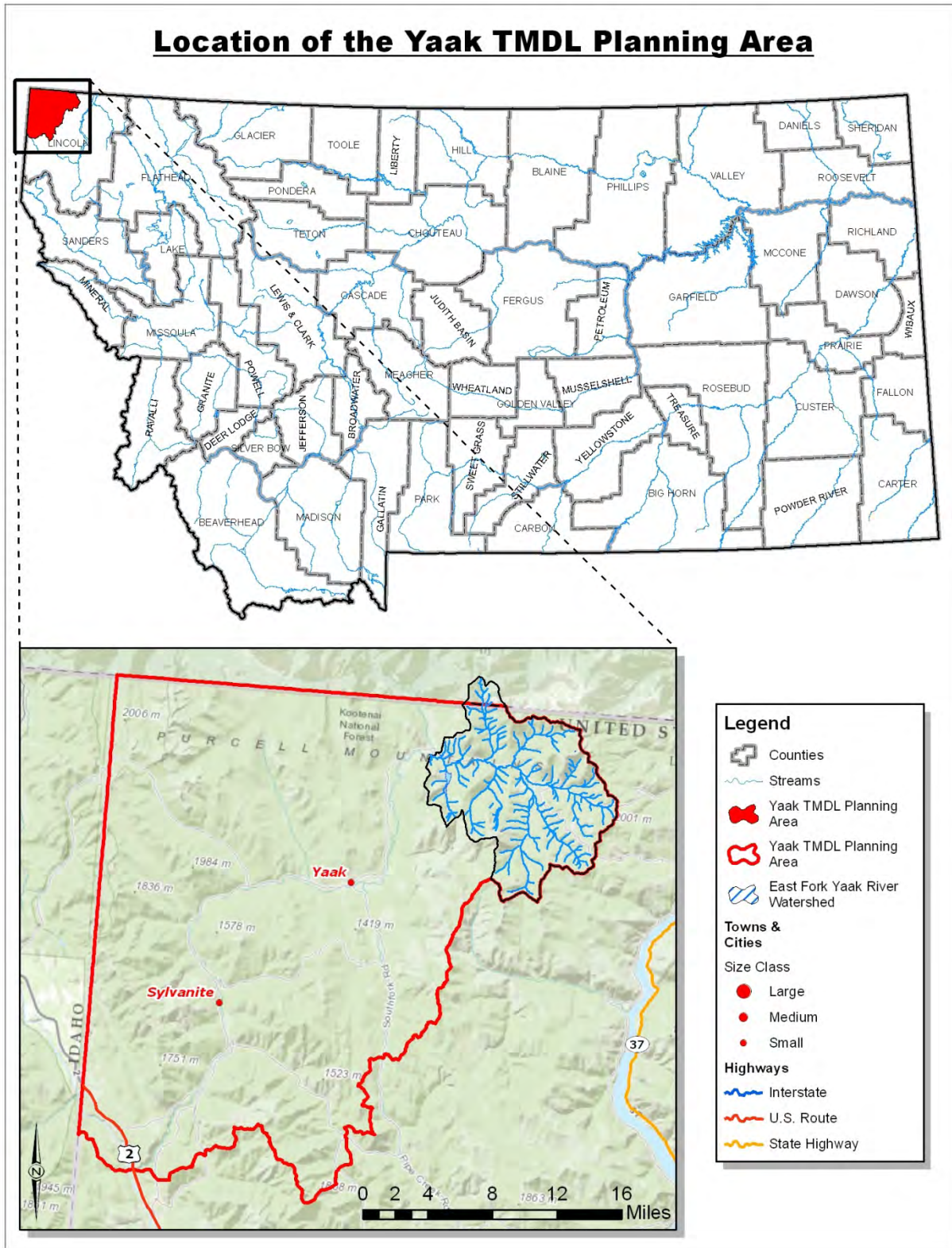


Figure A-1. Map of the Location of the Yaak TPA and East Fork Yaak River Watershed in Montana

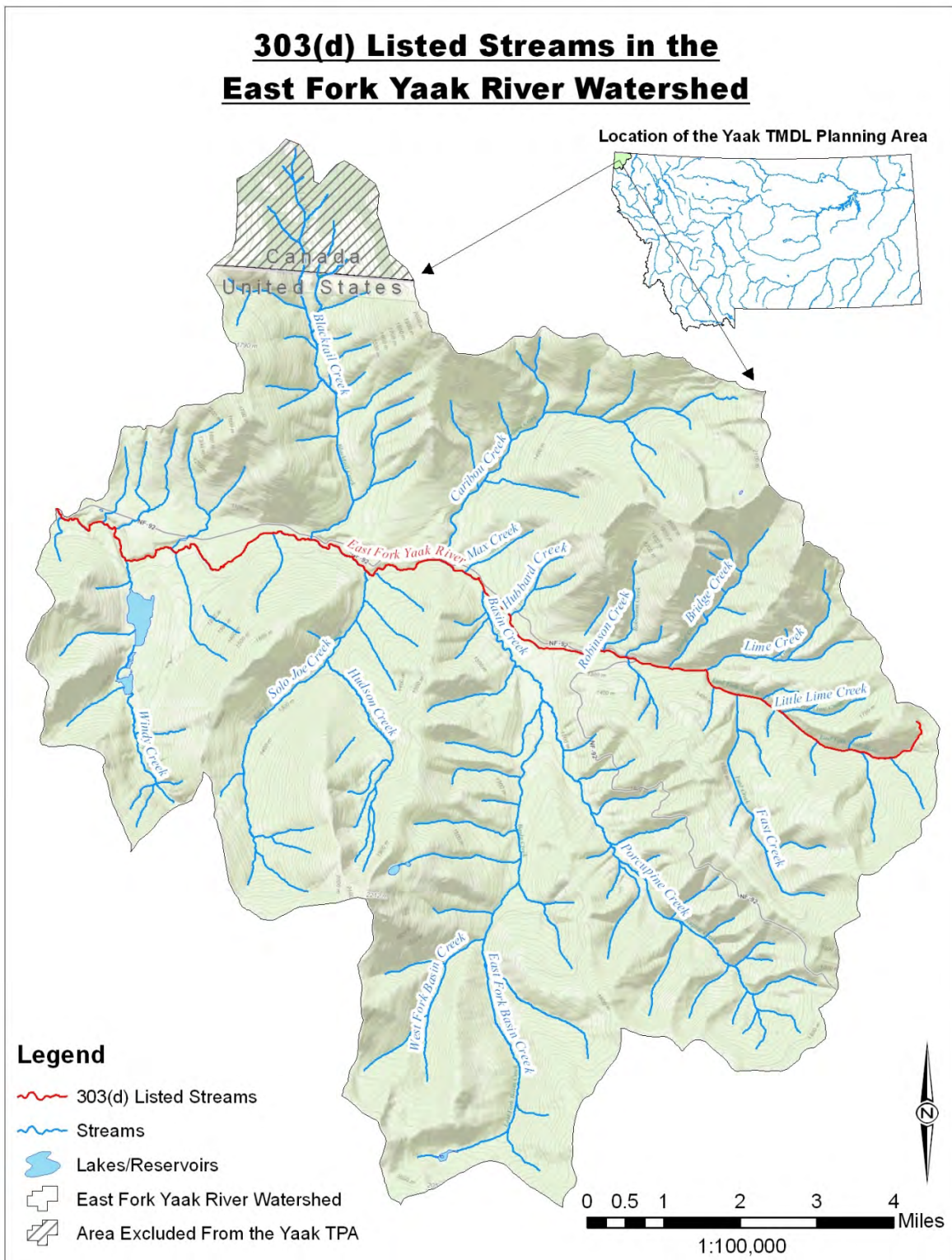


Figure A-2. Map of 303(d) Listed Streams in the East Fork Yaak River Watershed

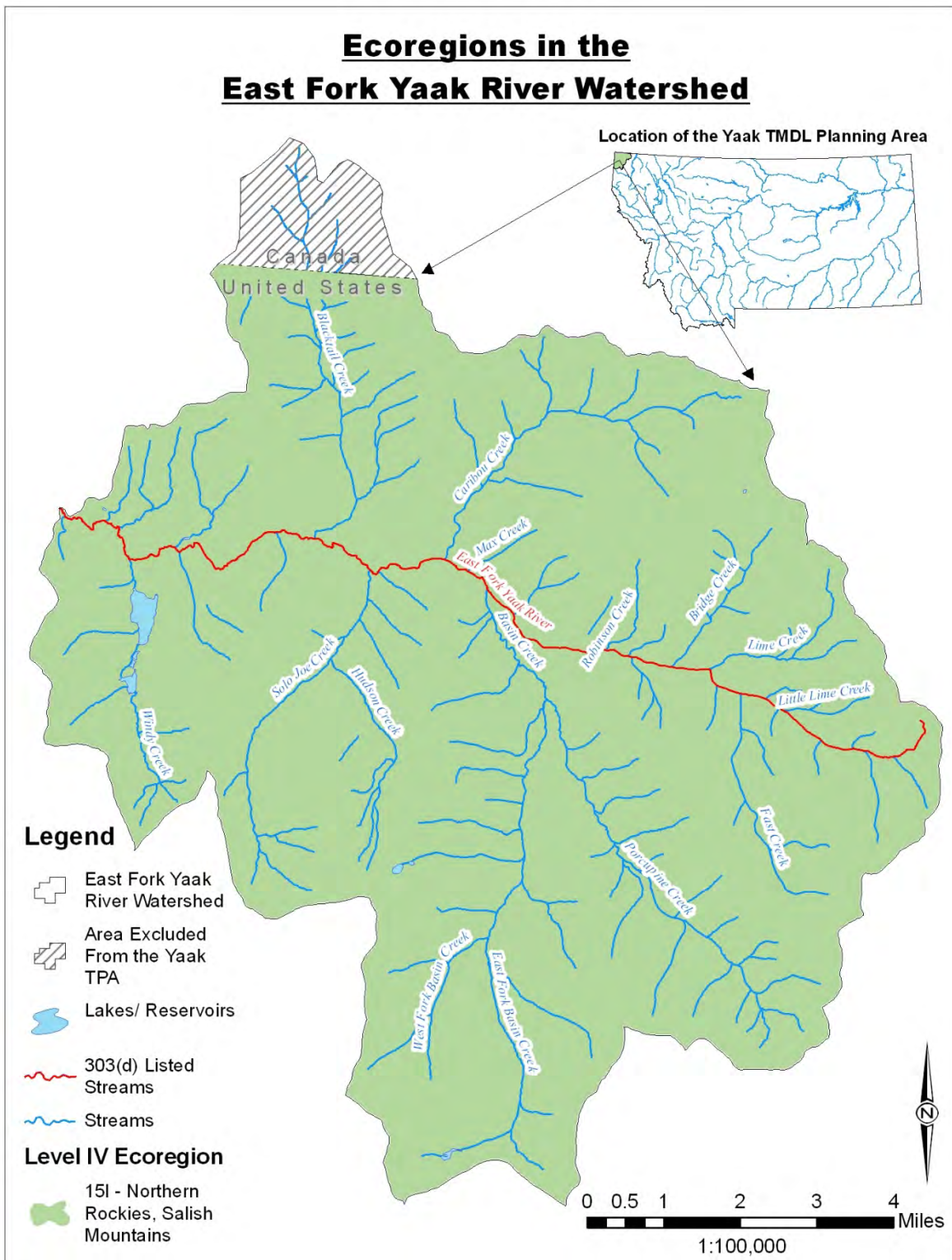


Figure A-3. Map of the Level IV Ecoregions in the East Fork Yaak River Watershed

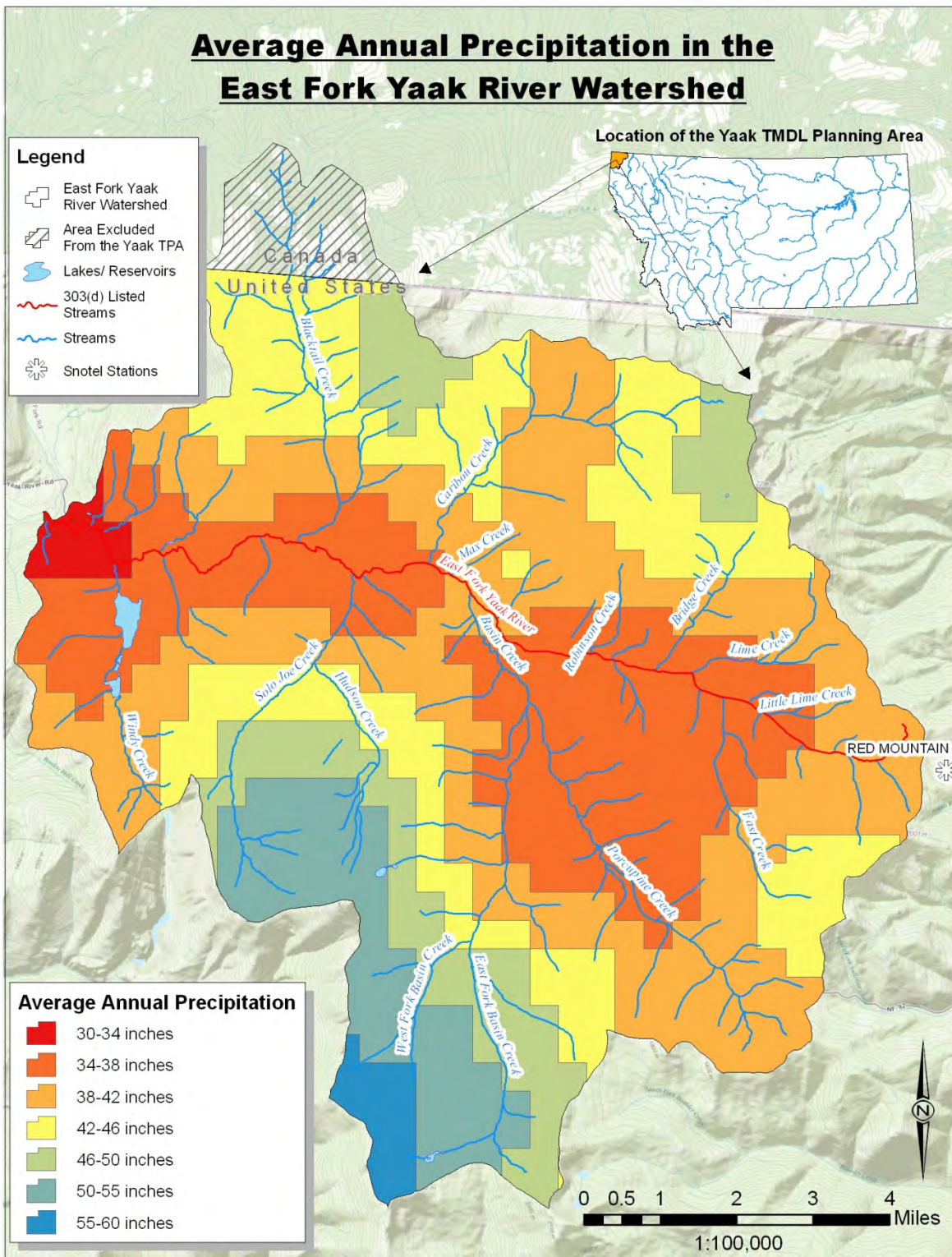


Figure A-4. Map of the Average Annual Precipitation in the East Fork Yaak River Watershed

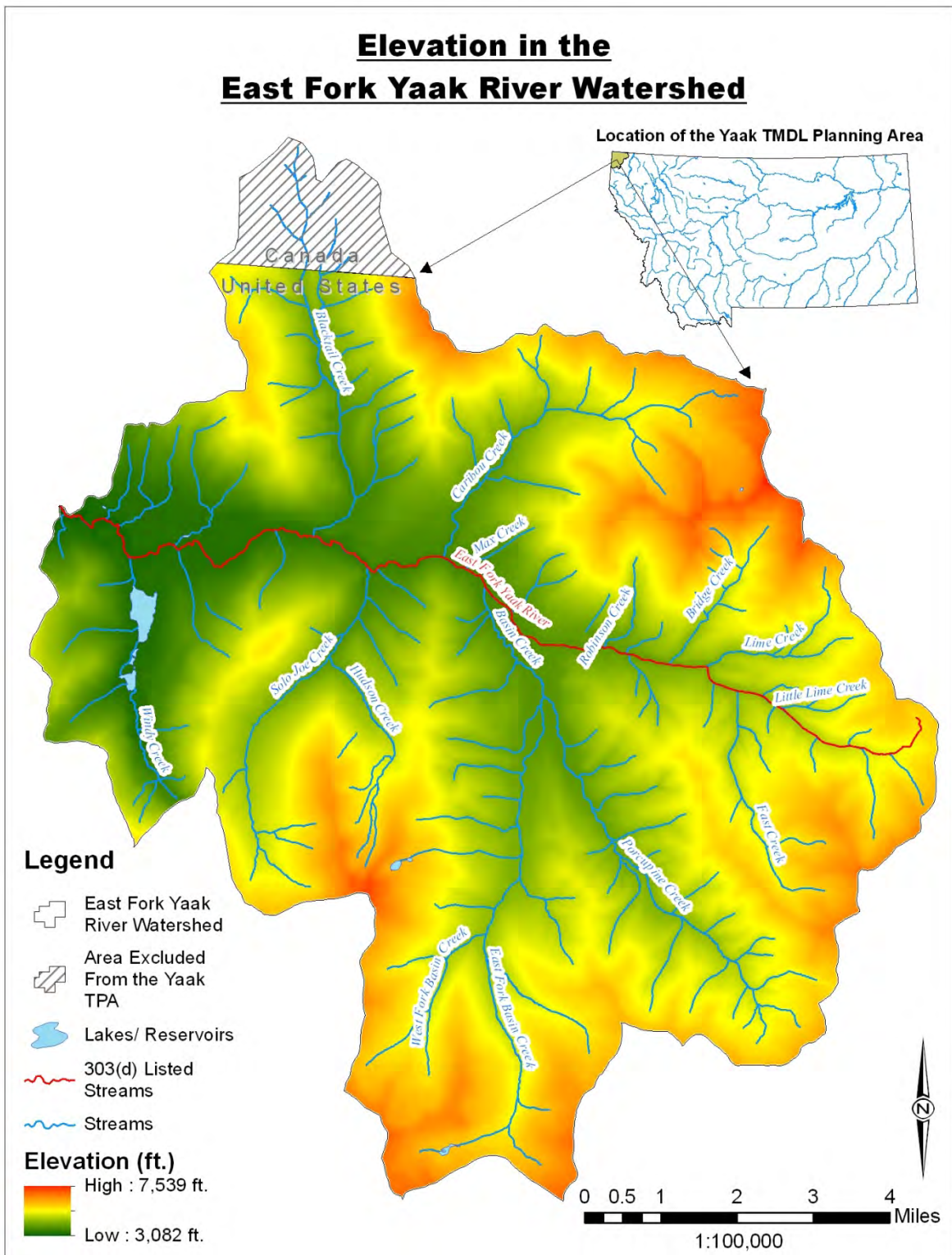


Figure A-5. Map of the Elevation in the East Fork Yaak River Watershed

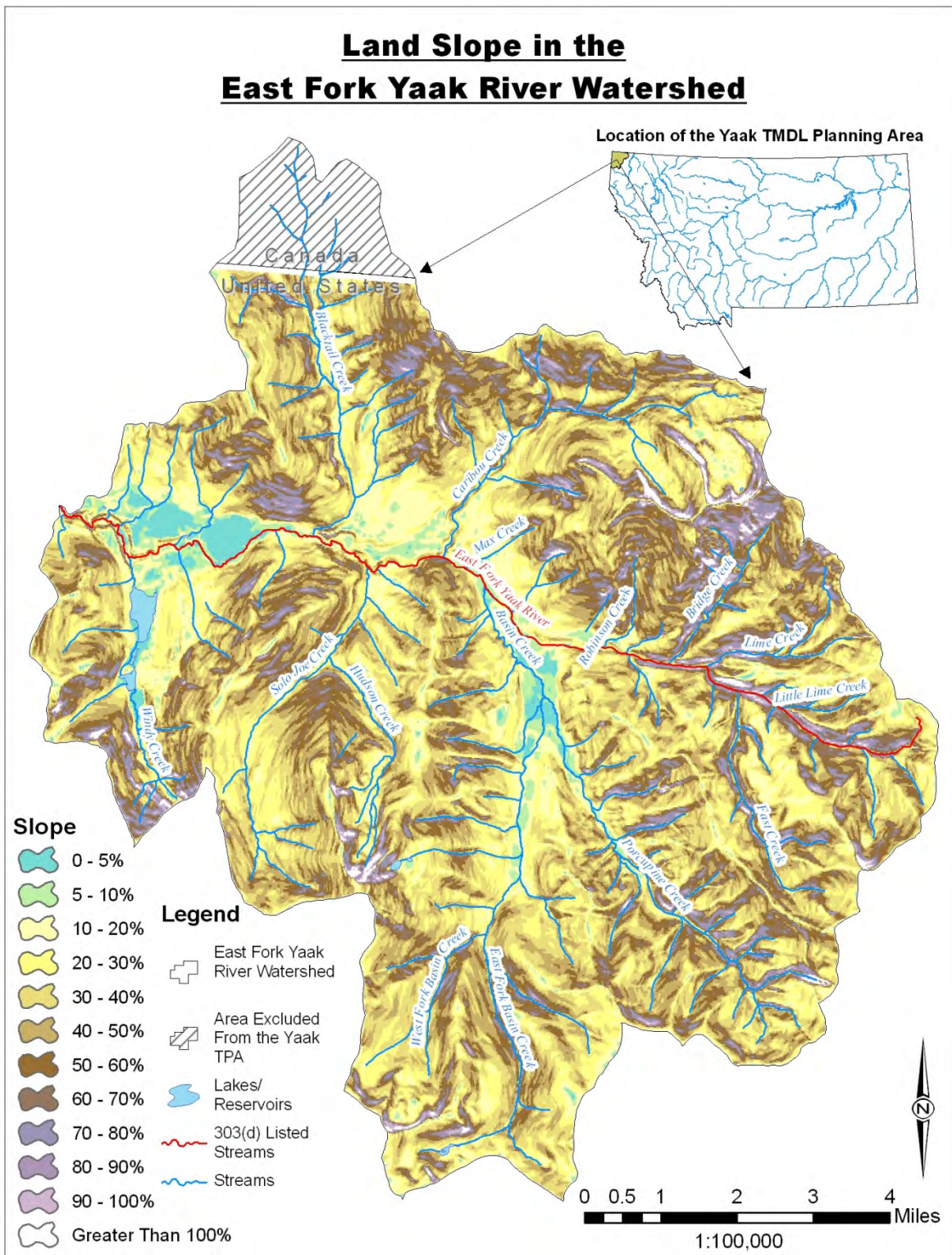


Figure A-6. Map of the Land Slope in the East Fork Yaak River Watershed

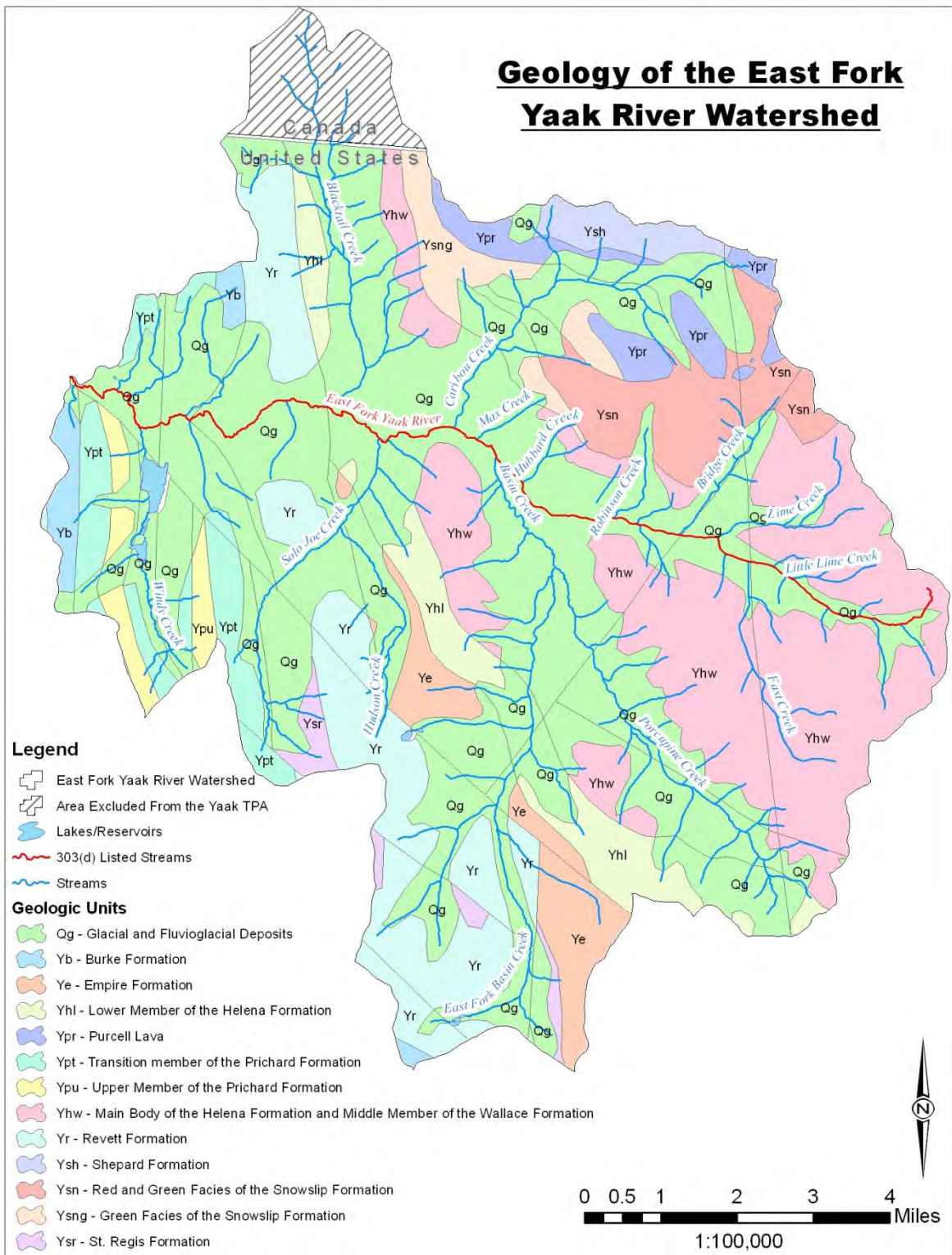


Figure A-7. Map of the Geology of the East Fork Yaak River Watershed

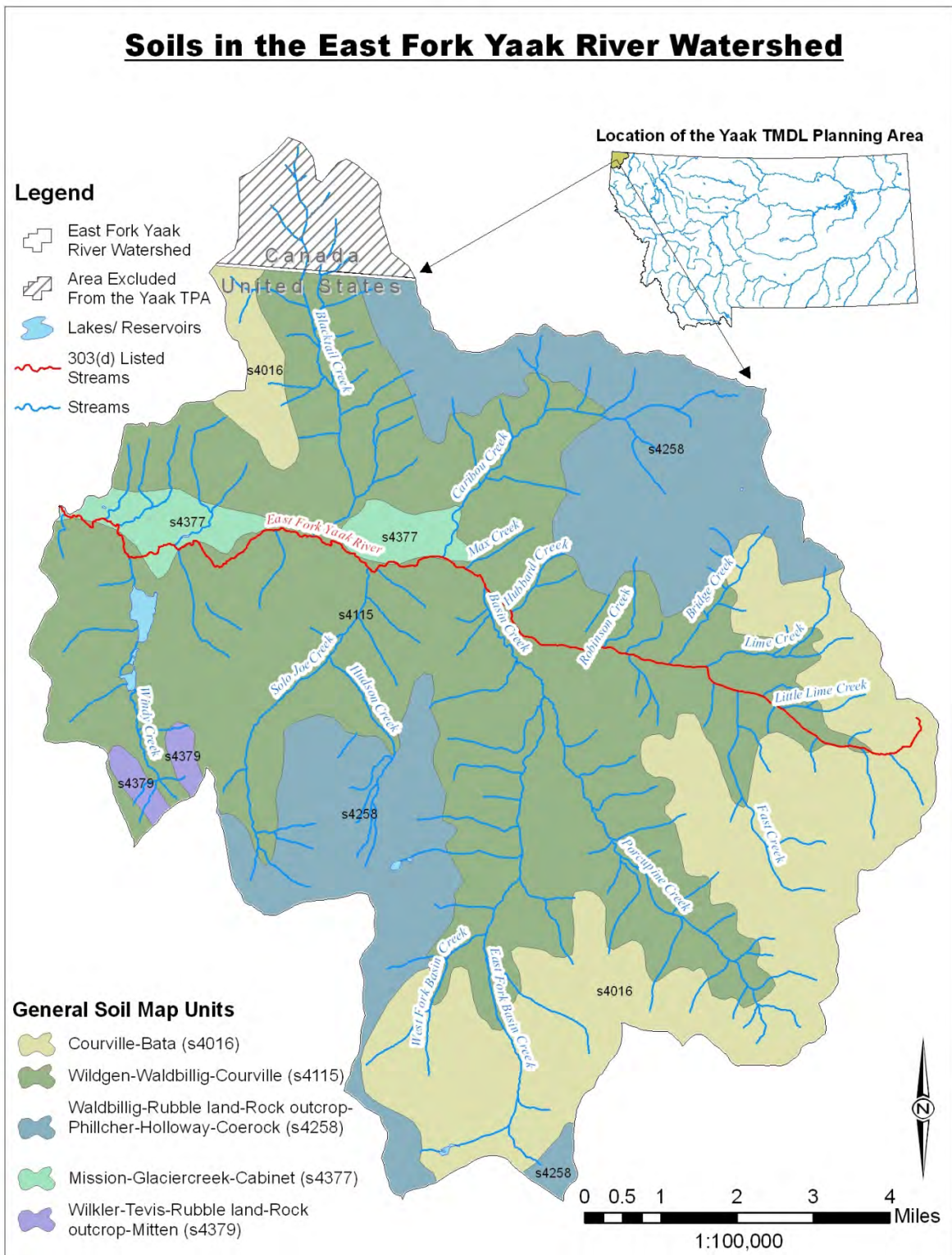


Figure A-8. Map of the Soils in the East Fork Yaak River Watershed

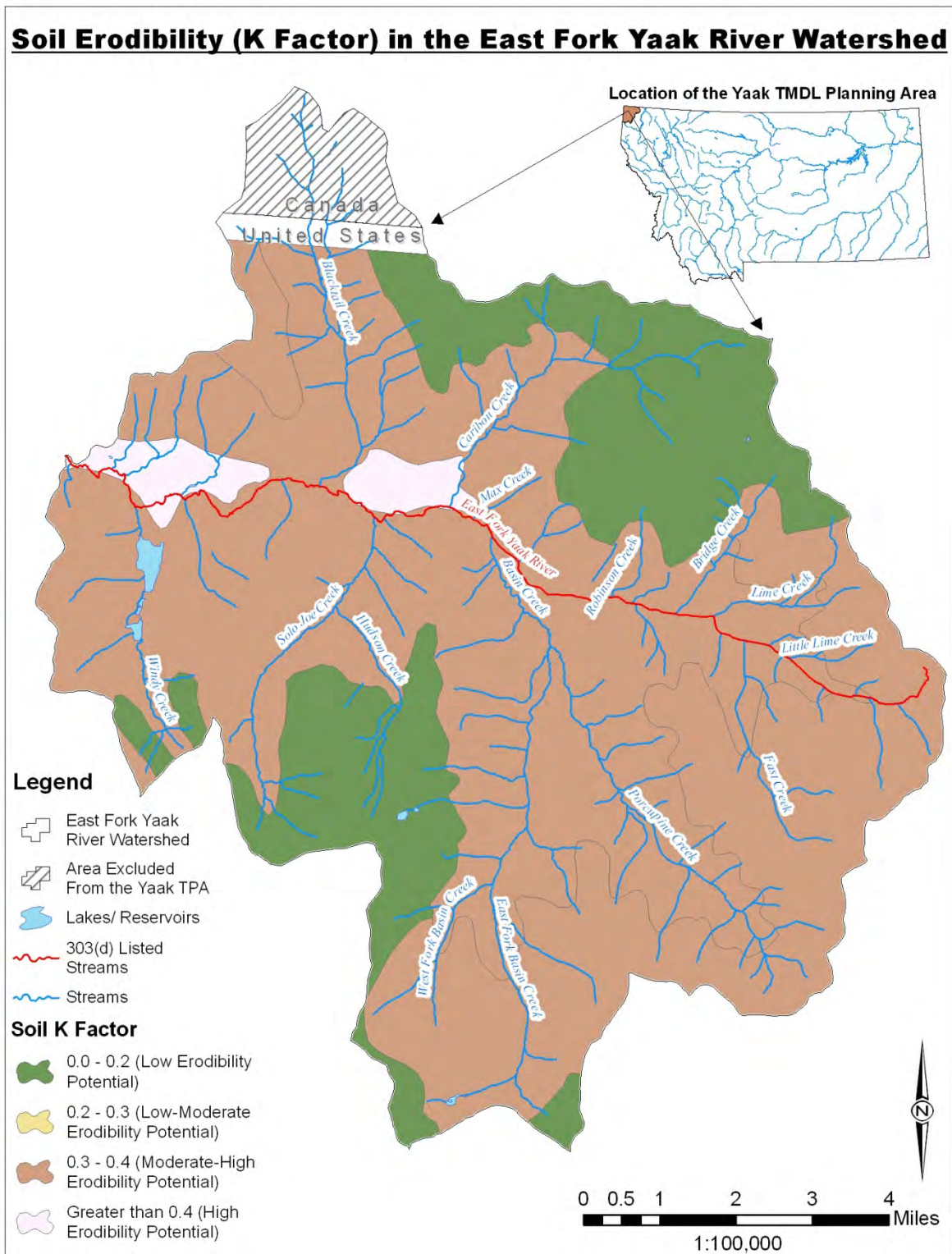


Figure A-9. Map of the Soil Erodibility (K factor) in the East Fork Yaak River Watershed

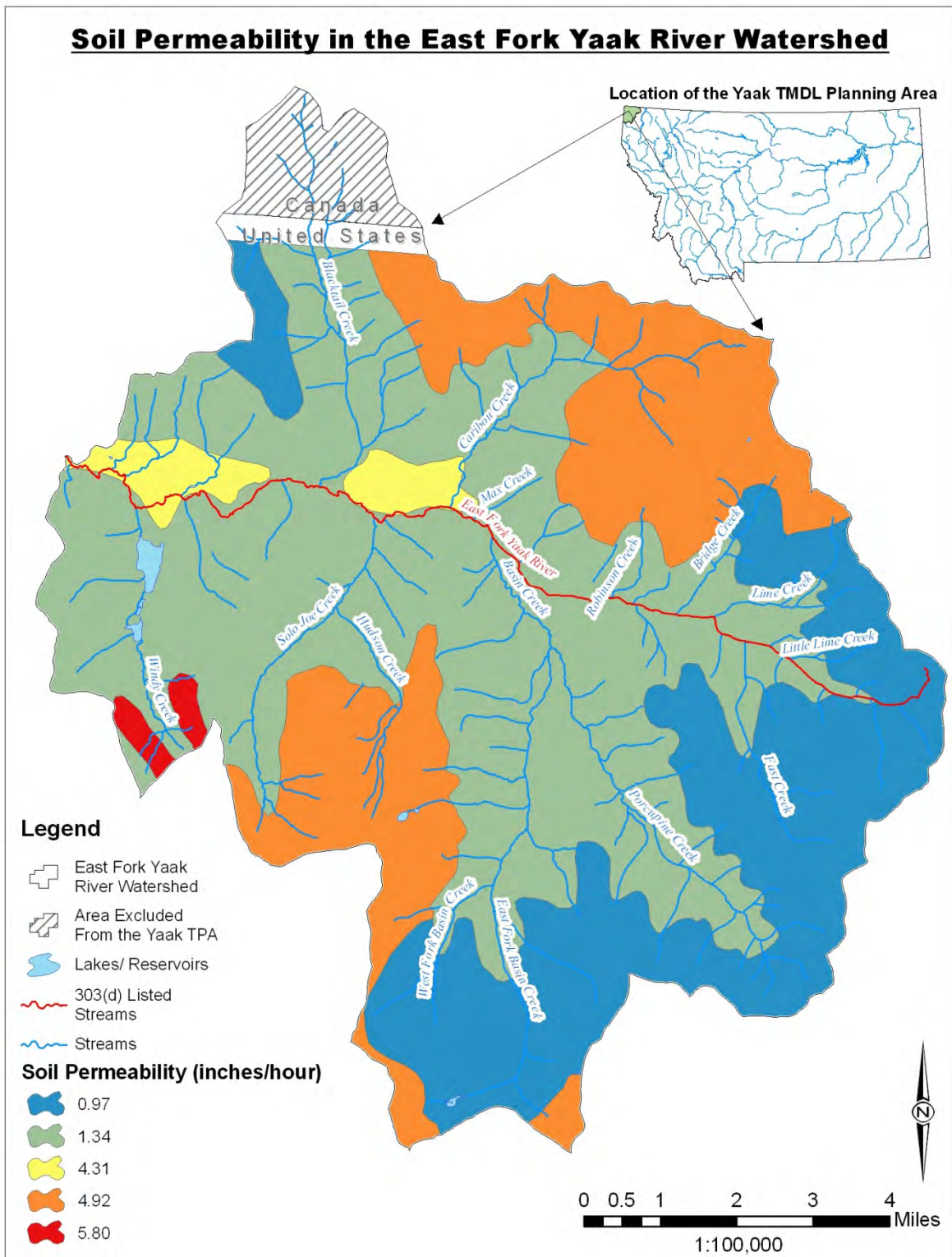


Figure A-10. Map of the Soil Permeability in the East Fork Yaak River Watershed

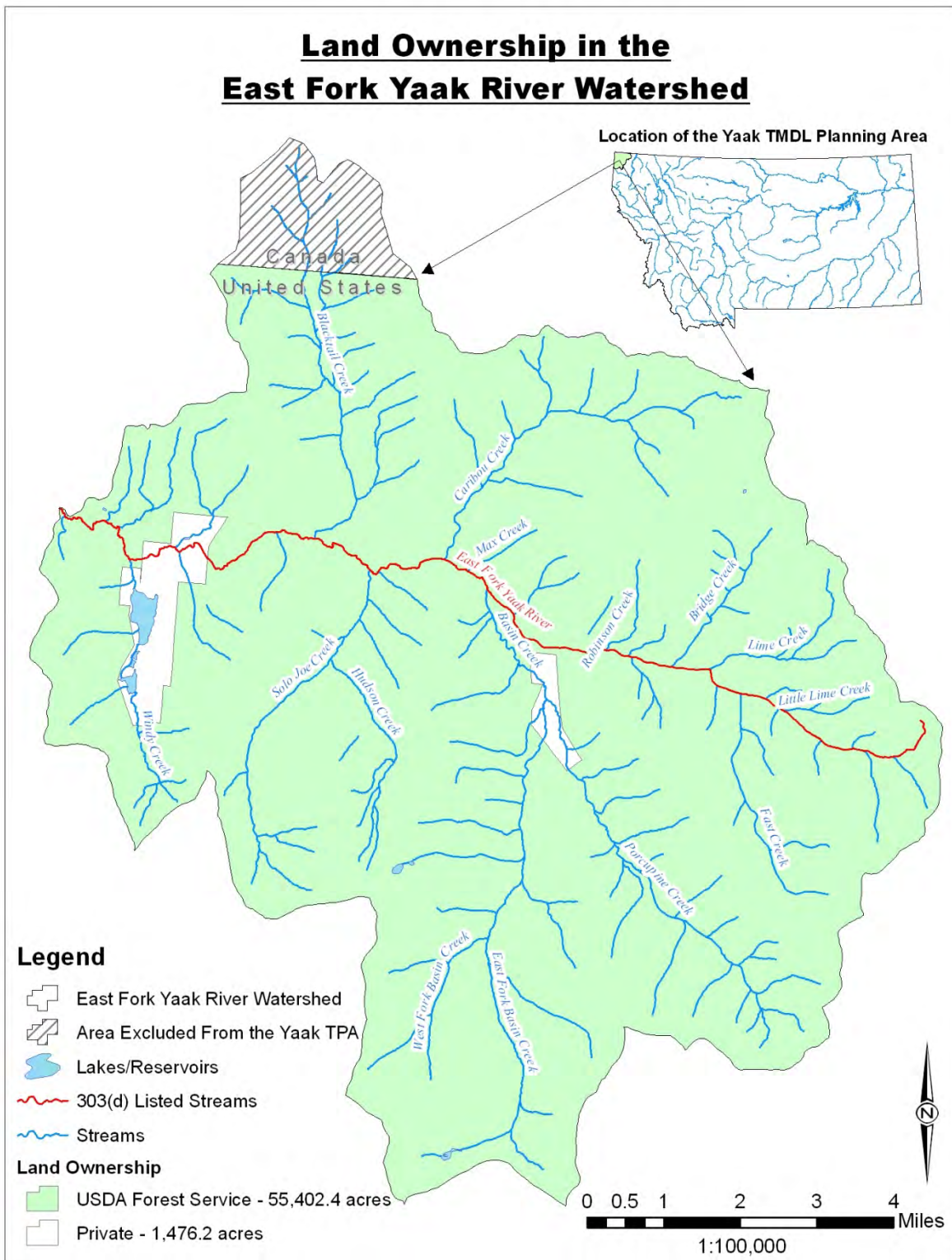


Figure A-11. Map of Land Ownership in the East Fork Yaak River Watershed

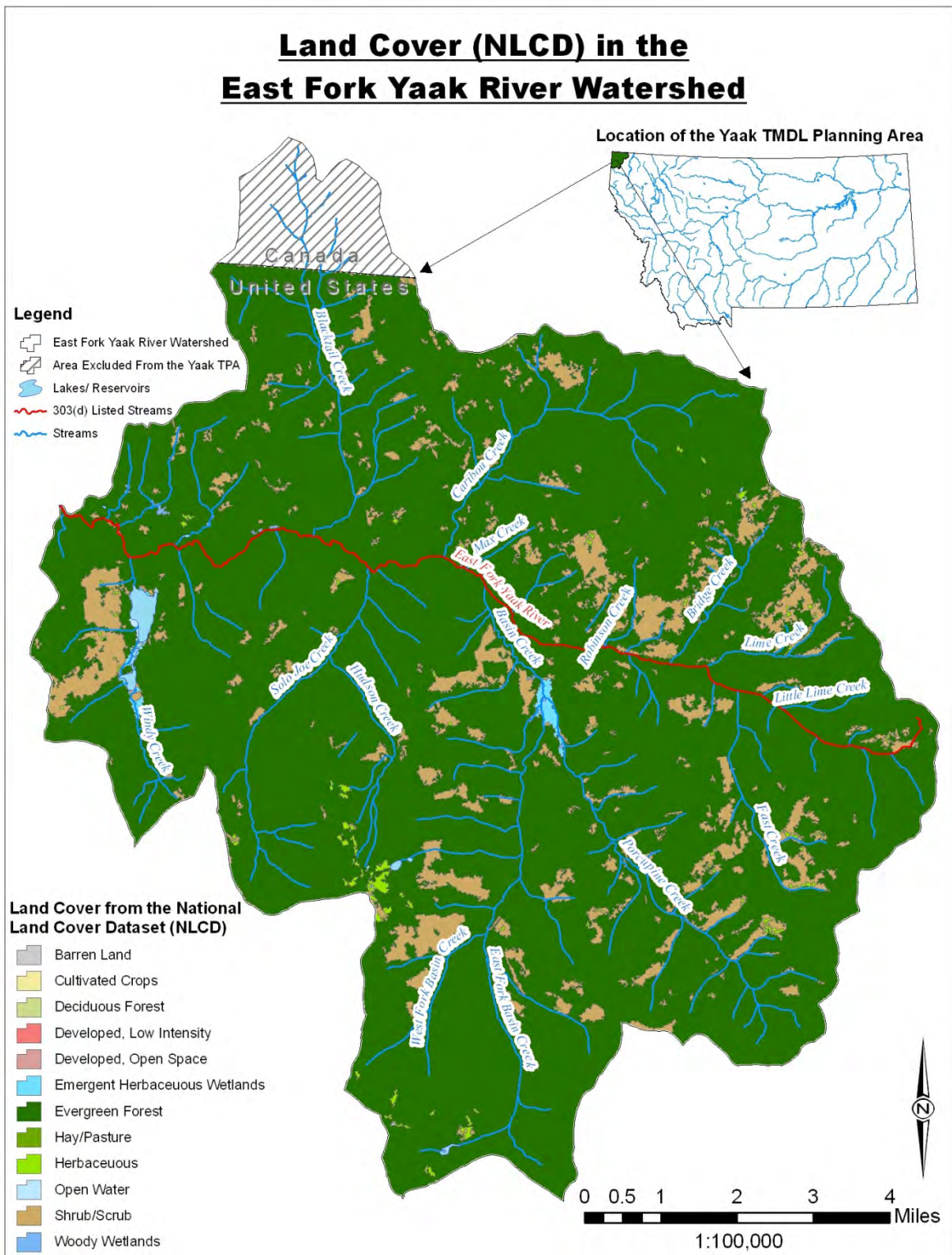


Figure A-12. Map of Land Cover in the East Fork Yaak River Watershed

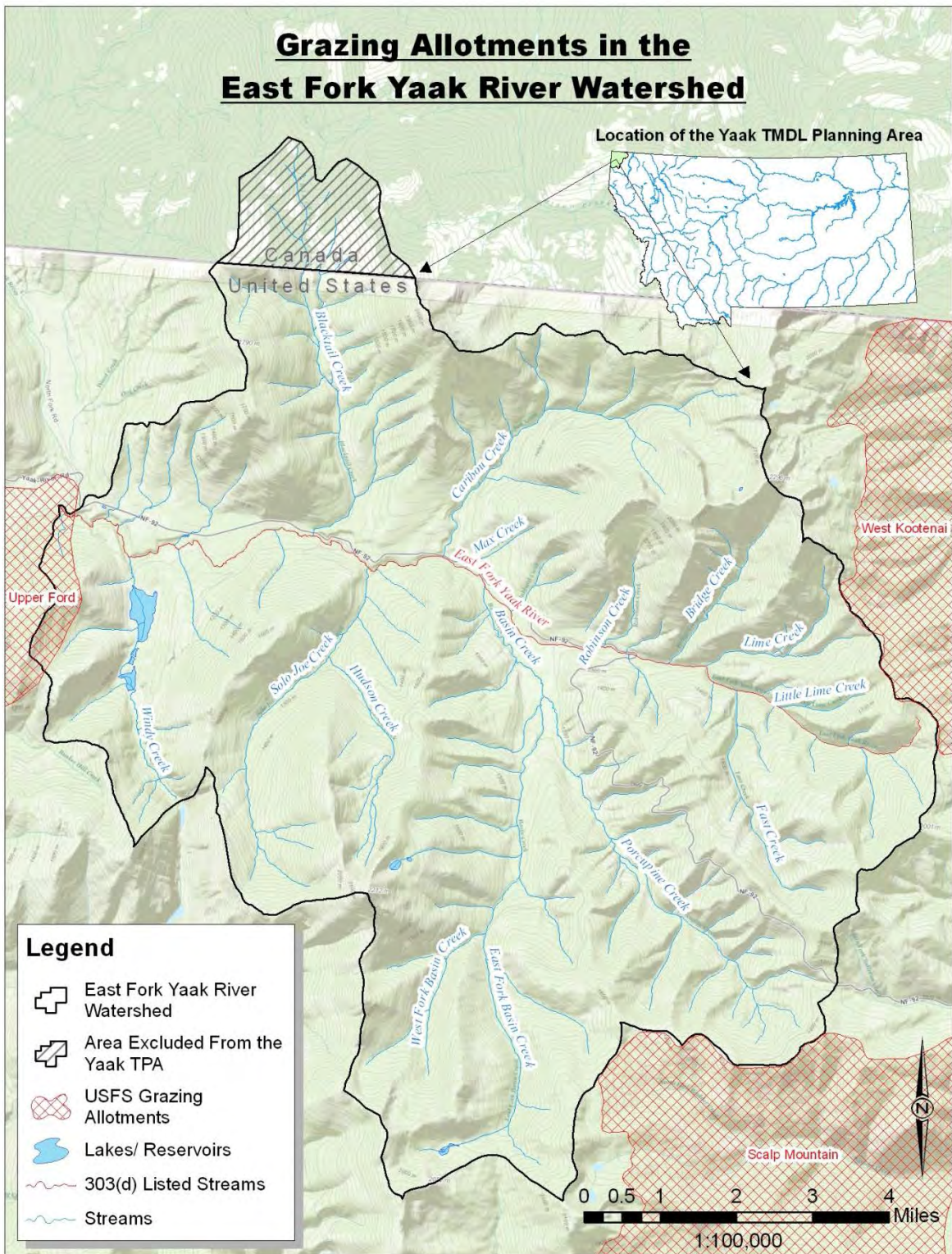


Figure A-13. Map of Grazing Allotments in the East Fork Yaak River Watershed

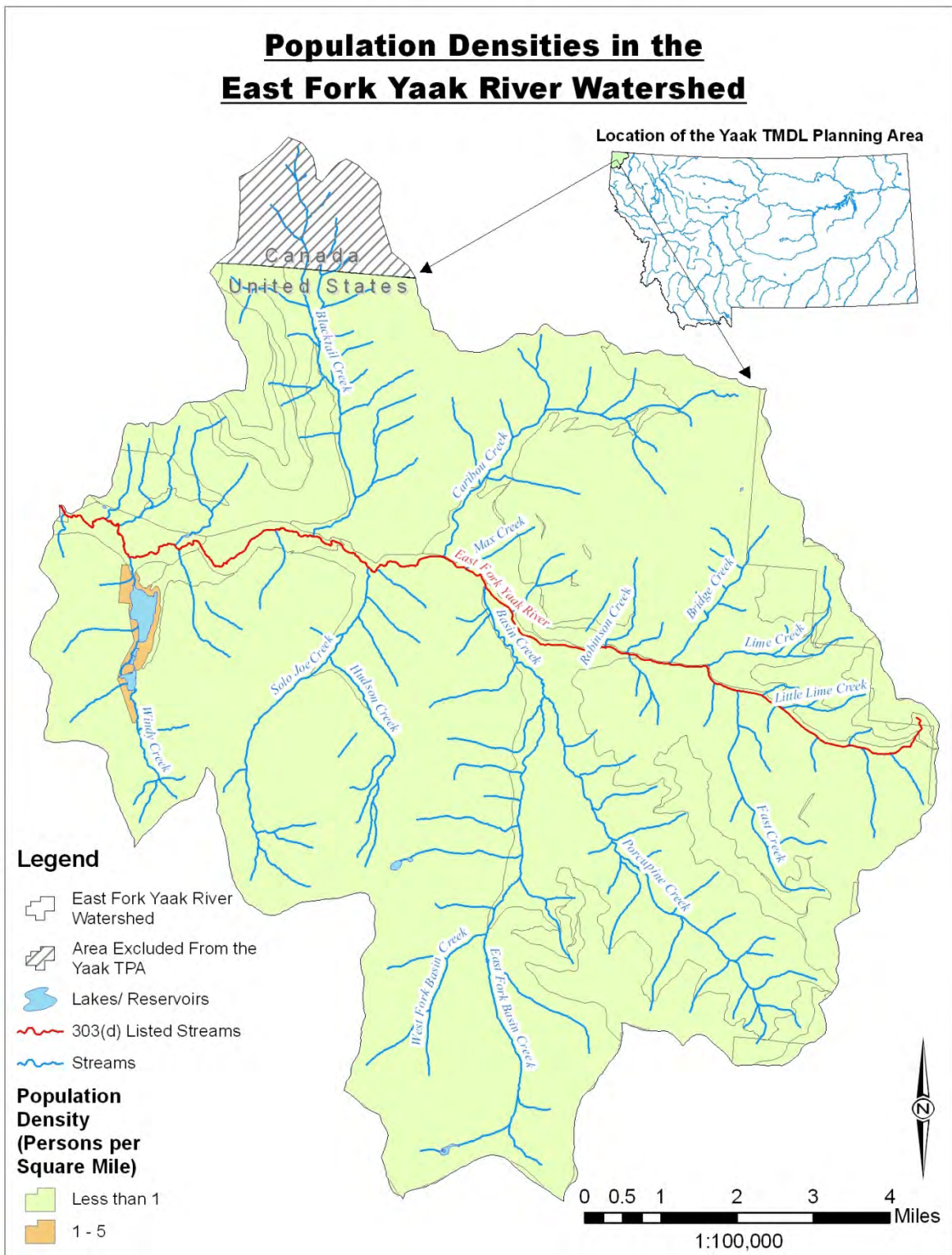


Figure A-14. Map of Population Densities in the East Fork Yaak River Watershed

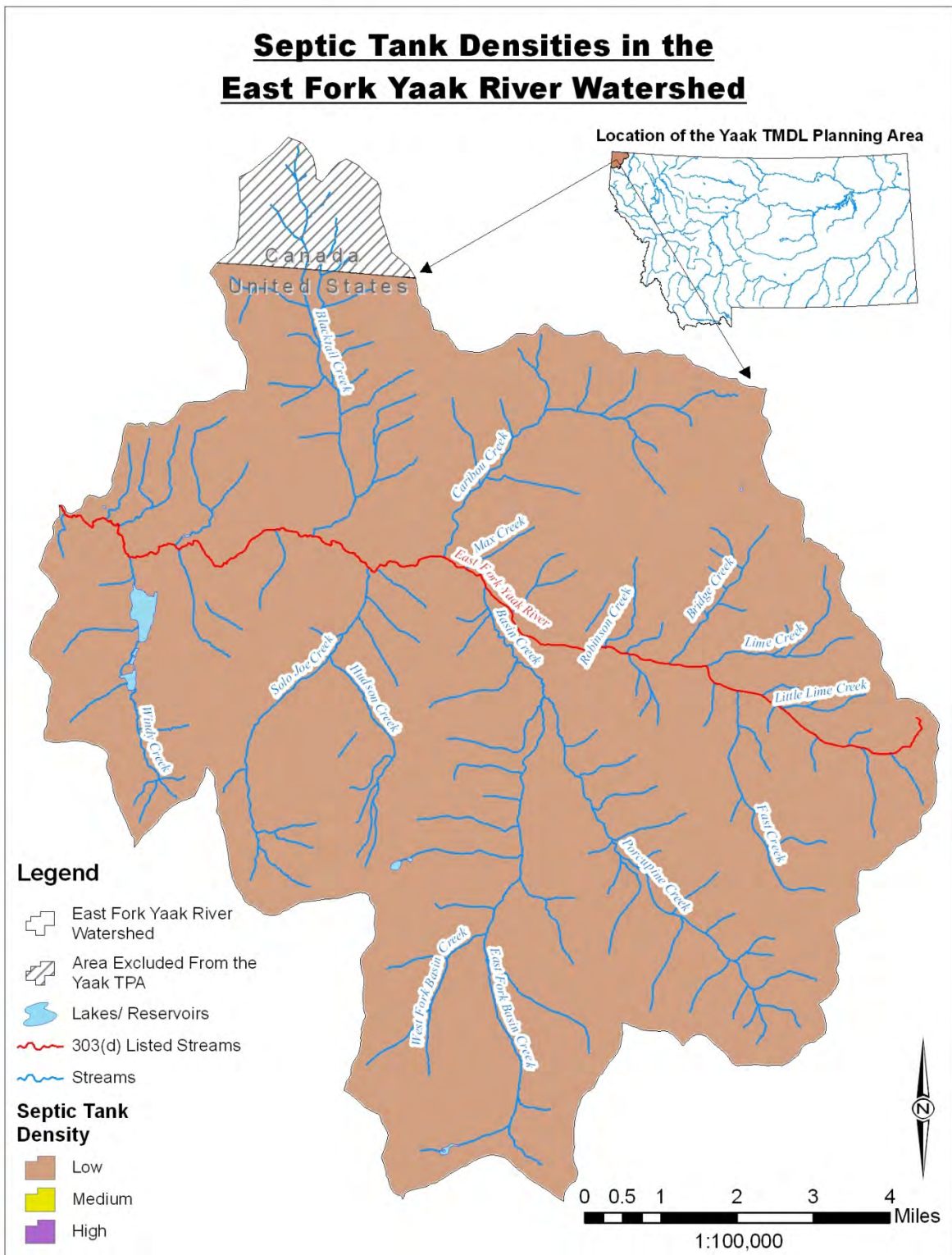


Figure A-15. Map of Septic Tank Densities in the East Fork Yaak River Watershed

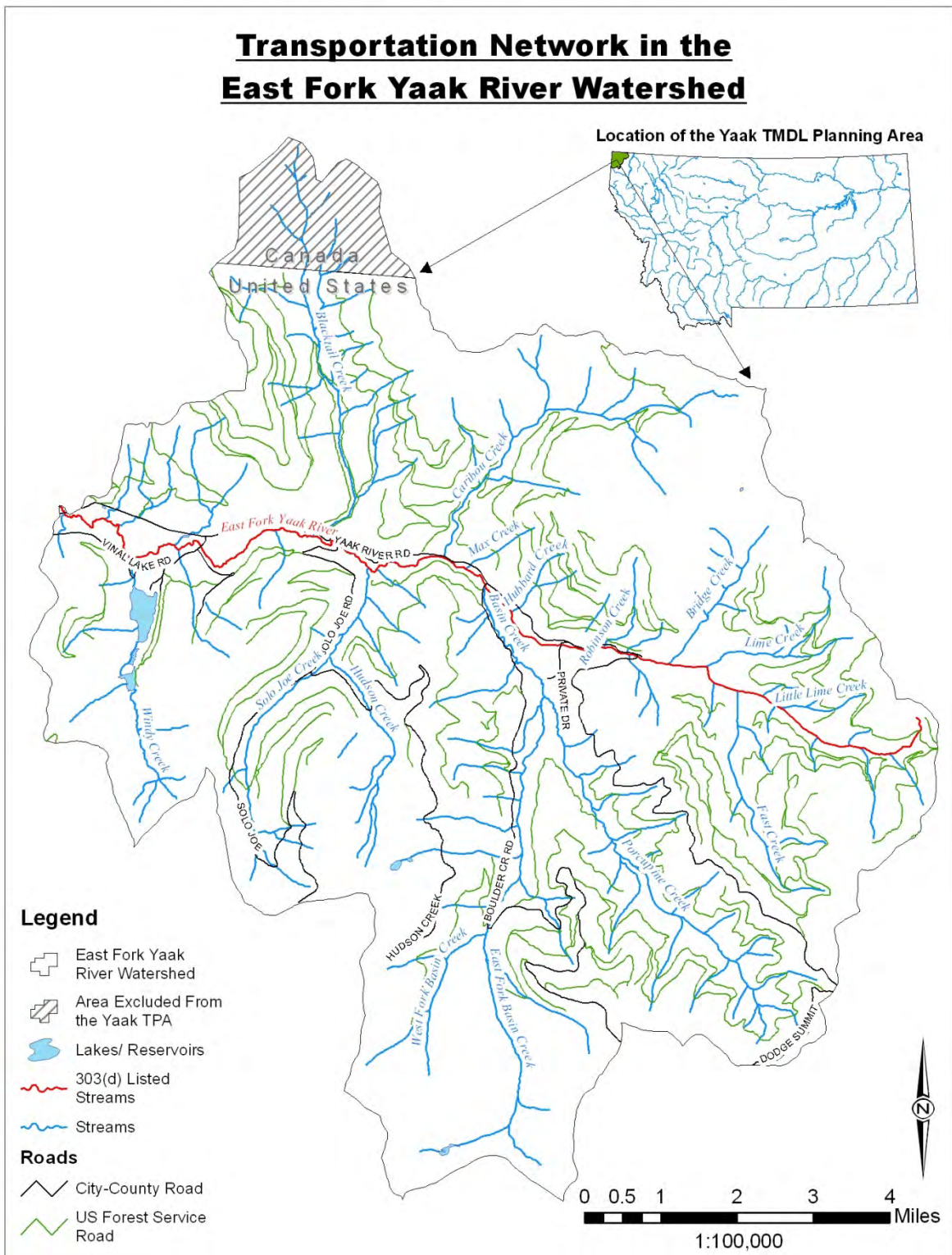


Figure A-16. Map of the Transportation Network in the East Fork Yaak River Watershed

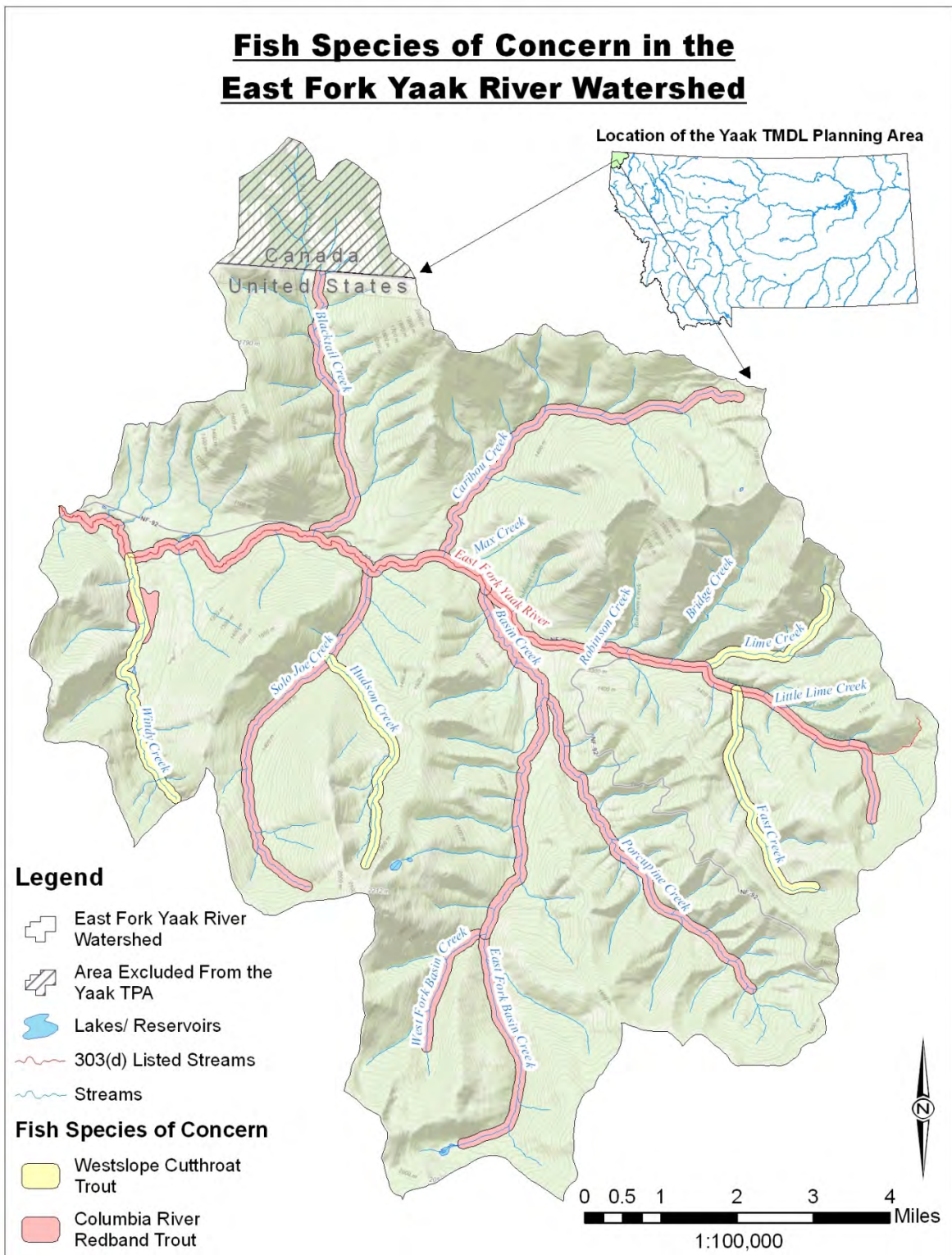


Figure A-17. Map of the Fish Species of Concern in the East Fork Yaak River Watershed

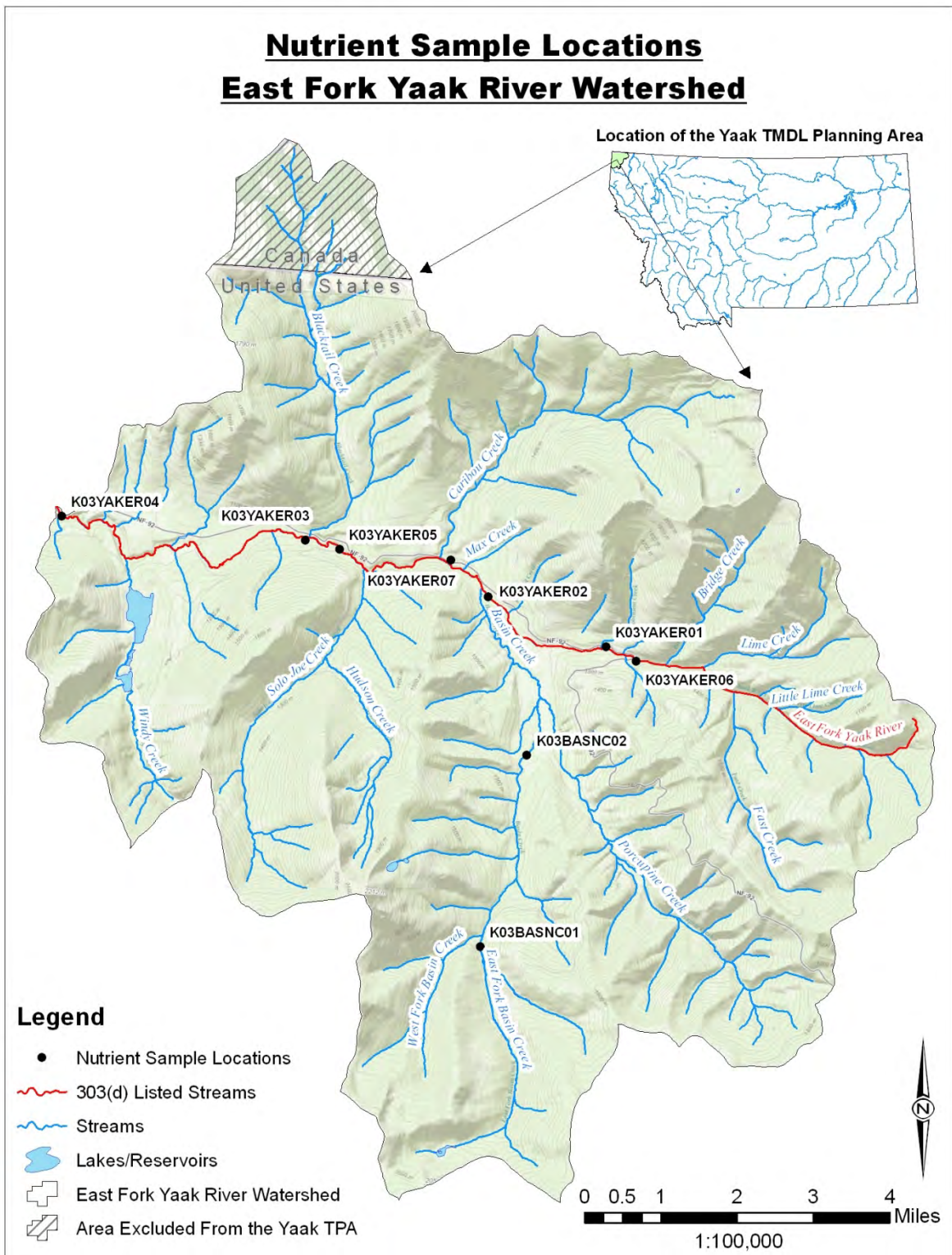


Figure A-18. Map of the Nutrient Sample Sites in the East Fork Yaak River Watershed

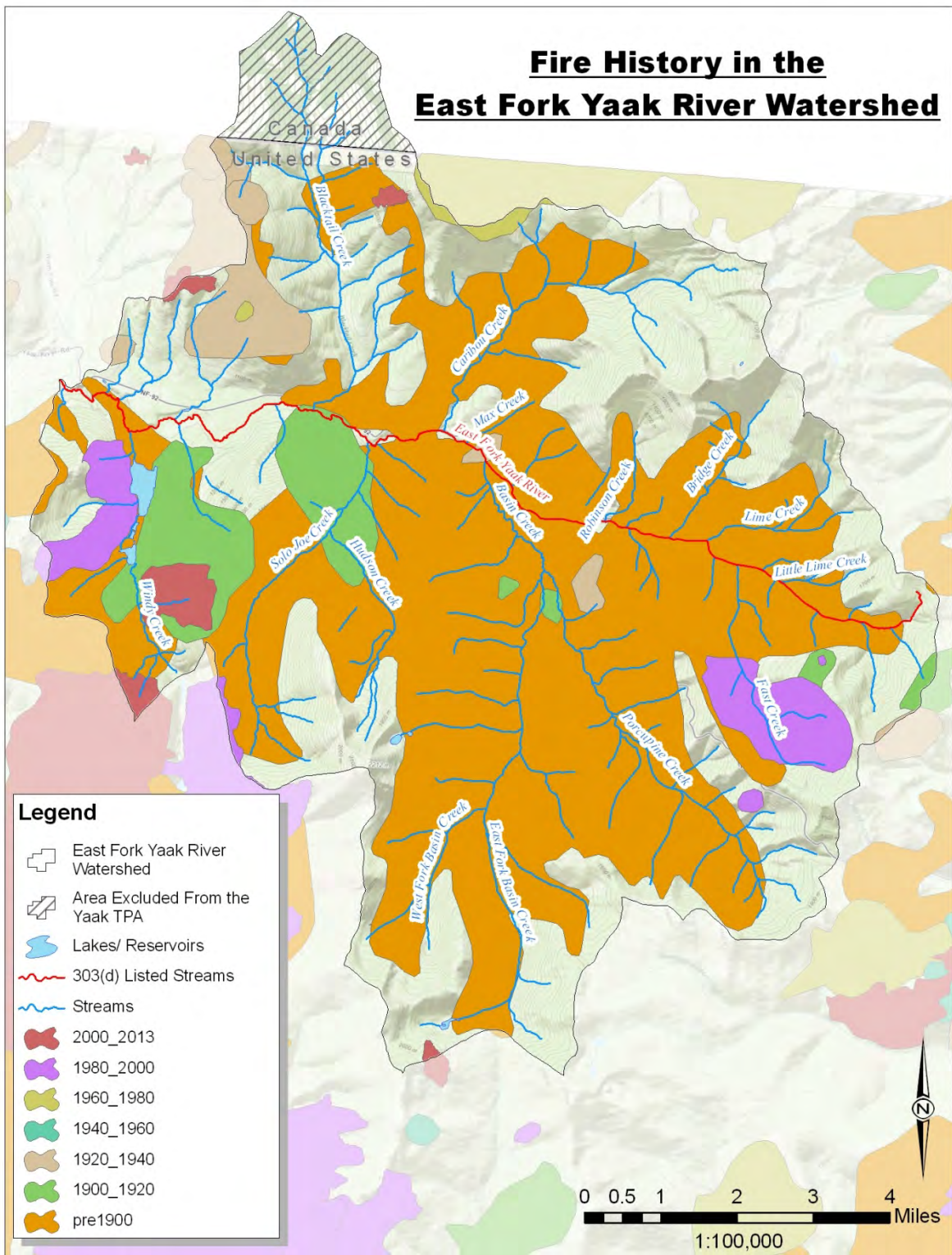


Figure A-19. Map of the Fire History in the East Fork Yaak River Watershed

Table A-1. Fire History in the East Fork Yaak River Watershed

Fire Name	Fire Year	Acres	Agency
Caribou Mountain	2009	85	USFS
Purcell Summit	2008	90	USFS
Grubstake	2000	95	USFS
Okaga	2000	454	USFS
Upper Beaver	2000	9,423	USFS
Zimmerman Hill	1994	785	USFS
Fish Fry	1994	1,420	USFS
Porcupine	1993	40	USFS
Unnamed	1991	Data Unavailable	
Unnamed	1991	498	USFS
Unnamed	1976	Data Unavailable	
Unnamed	1973	Data Unavailable	
Unnamed	1931	Data Unavailable	
Unnamed	1928	Data Unavailable	
Unnamed	1926	Data Unavailable	
Unnamed	1924	Data Unavailable	
Unnamed	1921	Data Unavailable	
Unnamed	1921	Data Unavailable	
Unnamed	1920	Data Unavailable	
Unnamed	1919	Data Unavailable	
Unnamed	1919	Data Unavailable	
Unnamed	1919	Data Unavailable	
Unnamed	1915	Data Unavailable	
Unnamed	1915	Data Unavailable	
Unnamed	1910	Data Unavailable	
Unnamed	1889	Data Unavailable	
Unnamed	1889	Data Unavailable	
Unnamed	1860	Data Unavailable	

Fire acreage may include burned areas outside of the watershed

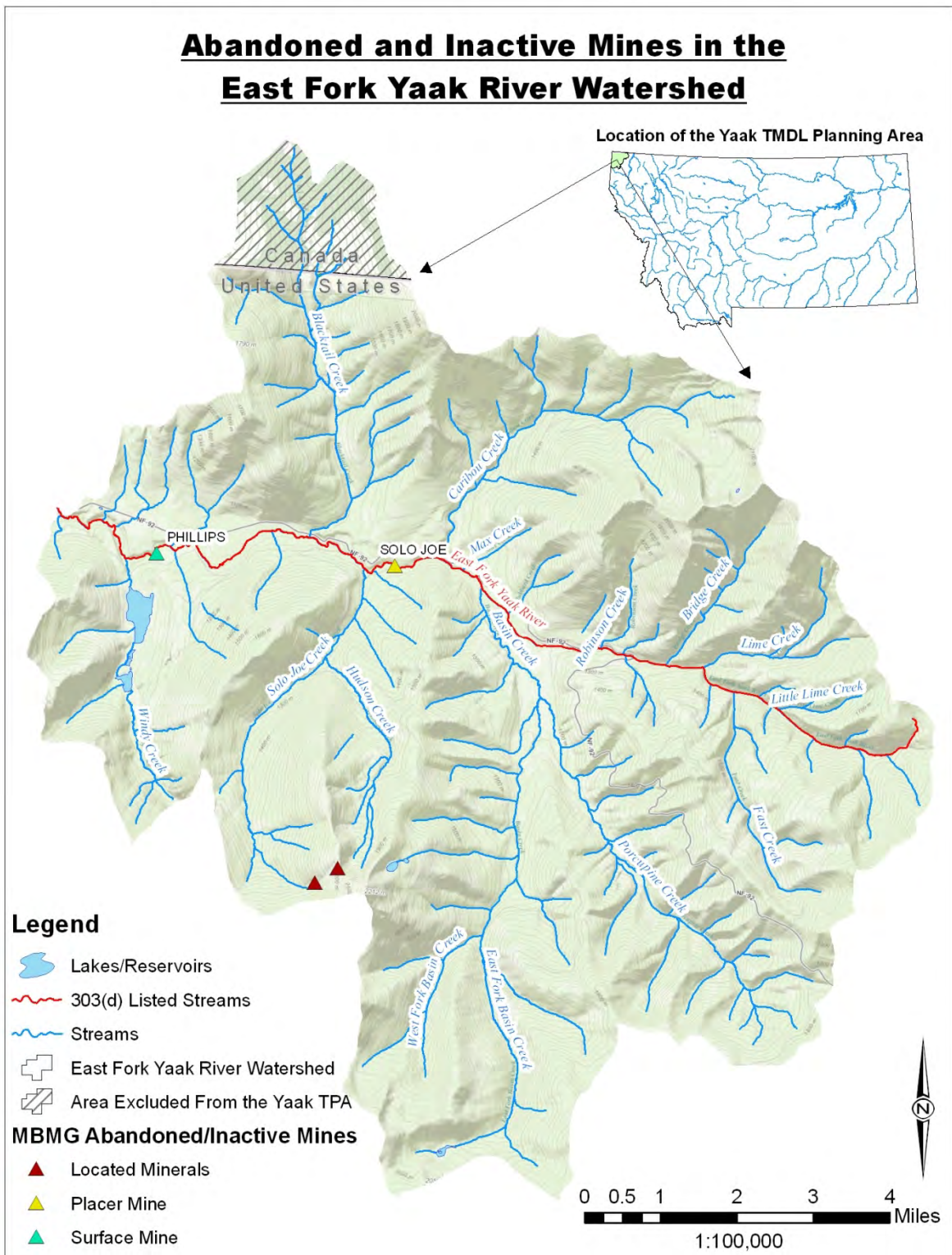


Figure A-20. Map of the Abandoned and Inactive Mines in the East Fork Yaak River Watershed