

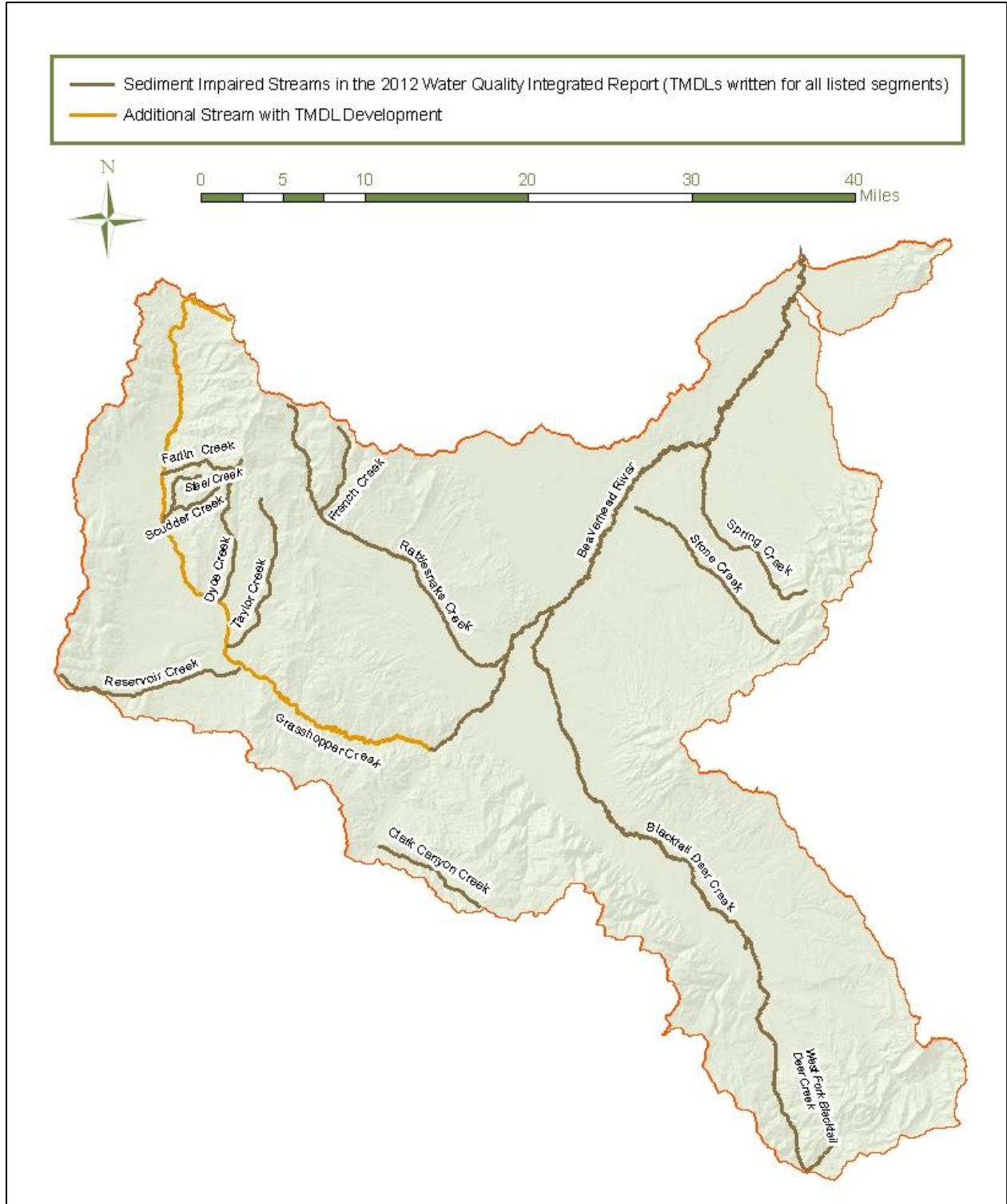
APPENDIX A - MAPS AND TABLES

LIST OF MAPS

Map A-1. Sediment impaired waterbodies within the Beaverhead TMDL planning area.....	A-2
Map A-2. Beaverhead TMDL planning area location map	A-9
Map A-3. Level IV Ecoregions in the Beaverhead TMDL planning area	A-10
Map A-4. Topography in the Beaverhead TMDL planning area	A-11
Map A-5. Precipitation in the Beaverhead TMDL planning area	A-12
Map A-6. Dewatered streams in the Beaverhead TMDL planning area	A-13
Map A-7. Geology in the Beaverhead TMDL planning area.....	A-14
Map A-8. Susceptibility to erosion in the Beaverhead TMDL planning area	A-15
Map A-9. Land cover in the Beaverhead TMDL planning area	A-16
Map A-10. Recent significant fires in the Beaverhead TMDL planning area	A-17
Map A-11. Fish distribution in the Beaverhead TMDL planning area.....	A-18
Map A-12. Irrigation in the Beaverhead TMDL planning area	A-19
Map A-13. Land ownership in the Beaverhead TMDL planning area	A-20
Map A-14. Population in the Beaverhead TMDL planning area	A-21
Map A-15. Point sources in the Beaverhead TMDL planning area	A-22

LIST OF TABLES

Table A-1. 2012 IR Impaired Waterbodies, Impairment Causes, Impaired Uses, and Impairment Cause Status in the Beaverhead TPA.....	A-3
---	-----



Map A-1. Sediment impaired waterbodies within the Beaverhead TMDL planning area

Table A-1. 2012 IR Impaired Waterbodies, Impairment Causes, Impaired Uses, and Impairment Cause Status in the Beaverhead TPA

Waterbody & Location Description	Waterbody ID	Impairment Cause	TMDL Pollutant Category	Impaired Use(s)	Impairment Cause Status
BEAVERHEAD RIVER , Clark Canyon Dam to Grasshopper Creek	MT41B001_010	Lead	Metals	Aquatic Life & Drinking Water	To be completed in a future project
		Low flow alterations	Not Applicable; Non-Pollutant	Aquatic Life & Primary Contact Recreation	Partially addressed
		Alteration in streamside or littoral vegetative covers	Not Applicable; Non-Pollutant	Aquatic Life	Addressed via restoration plan in this doc; not linked to a TMDL
BEAVERHEAD RIVER , Grasshopper Creek to mouth (Jefferson River)	MT41B001_020	Sedimentation/Siltation	Sediment	Aquatic Life	Sediment TMDL contained in this document
		Temperature, water	Temperature	Aquatic Life	To be completed in a future project
		Physical substrate habitat alterations	Not Applicable; Non-Pollutant	Aquatic Life	Addressed by sediment TMDL in this document
		Low flow alterations	Not Applicable; Non-Pollutant	Aquatic Life & Primary Contact Recreation	Partially addressed
		Alteration in streamside or littoral vegetative covers	Not Applicable; Non-Pollutant	Aquatic Life	Addressed by sediment TMDL in this document
BLACKTAIL DEER CREEK , headwaters to mouth (Beaverhead River)	MT41B002_030	Temperature, water	Temperature	Aquatic Life	To be completed in a future project
		Sedimentation/Siltation	Sediment	Aquatic Life	Sediment TMDL contained in this document
		Low flow alterations	Not Applicable; Non-Pollutant	Aquatic Life & Primary Contact Recreation	Not yet addressed by a TMDL or restoration plan
		Alteration in streamside or littoral vegetative covers	Not Applicable; Non-Pollutant	Aquatic Life	Addressed by sediment TMDL in this document
CLARK CANYON CREEK , headwaters to mouth (Beaverhead River), T9S R10W S28	MT41B002_110	Phosphorus (Total)	Nutrients	Aquatic Life	To be completed in a future project
		Sedimentation/Siltation	Sediment	Aquatic Life	Sediment TMDL contained in this document
		Alteration in streamside or littoral vegetative covers	Not Applicable; Non-Pollutant	Aquatic Life	Addressed by sediment TMDL in this document

Table A-1. 2012 IR Impaired Waterbodies, Impairment Causes, Impaired Uses, and Impairment Cause Status in the Beaverhead TPA

Waterbody & Location Description	Waterbody ID	Impairment Cause	TMDL Pollutant Category	Impaired Use(s)	Impairment Cause Status
DYCE CREEK , confluence of East and West Forks to Grasshopper Creek	MT41B002_140	Nitrogen (Total)	Nutrients	Aquatic Life	To be completed in a future project
		Sedimentation/Siltation	Sediment	Aquatic Life	Sediment TMDL contained in this document
		Low flow alterations	Not Applicable; Non-Pollutant	Aquatic Life & Primary Contact Recreation	Not yet addressed by a TMDL or restoration plan
		Alteration in streamside or littoral vegetative covers	Not Applicable; Non-Pollutant	Aquatic Life	Addressed by sediment TMDL in this document
EAST FORK BLACKTAIL DEER CREEK , headwaters to mouth (Blacktail Deer Creek)	MT41B002_040	Alteration in streamside or littoral vegetative covers	Not Applicable; Non-Pollutant	Aquatic Life	Addressed via restoration plan in this doc; not linked to a TMDL
FARLIN CREEK , headwaters to mouth (Grasshopper Creek), T6S R12W S7	MT41B002_020	Sedimentation/Siltation	Sediment	Aquatic Life	Sediment TMDL contained in this document
		Alteration in streamside or littoral vegetative covers	Not Applicable; Non-Pollutant	Aquatic Life	Addressed by sediment TMDL in this document
FRENCH CREEK , headwaters to mouth (Rattlesnake Creek)	MT41B002_100	Sedimentation/Siltation	Sediment	Aquatic Life	Sediment TMDL contained in this document
		Alteration in streamside or littoral vegetative covers	Not Applicable; Non-Pollutant	Aquatic Life	Addressed by sediment TMDL in this document
GRASSHOPPER CREEK , headwaters to mouth (Beaverhead River)	MT41B002_010	Zinc	Metals	Aquatic Life	To be completed in a future project
		Copper	Metals	Aquatic Life	To be completed in a future project
		Cadmium	Metals	Aquatic Life	To be completed in a future project
		Low flow alterations	Not Applicable; Non-Pollutant	Aquatic Life & Primary Contact Recreation	Not yet addressed by a TMDL or restoration plan
		Alteration in streamside or littoral vegetative covers	Not Applicable; Non-Pollutant	Aquatic Life	Addressed by sediment TMDL in this document

Table A-1. 2012 IR Impaired Waterbodies, Impairment Causes, Impaired Uses, and Impairment Cause Status in the Beaverhead TPA

Waterbody & Location Description	Waterbody ID	Impairment Cause	TMDL Pollutant Category	Impaired Use(s)	Impairment Cause Status
RATTLESNAKE CREEK , from the Dillon PWS off-channel well T7S R10W S11 to the mouth (Van Camp Slough)	MT41B002_090	Solids (Suspended/Bedload)	Sediment	Aquatic Life	Sediment TMDL contained in this document
		Phosphorus (Total)	Nutrients	Aquatic Life	To be completed in a future project
		Nitrogen (Total)	Nutrients	Aquatic Life	To be completed in a future project
		Sedimentation/Siltation	Sediment	Aquatic Life	Sediment TMDL contained in this document
		Lead	Metals	Aquatic Life & Drinking Water	To be completed in a future project
		Copper	Metals	Aquatic Life	To be completed in a future project
		Cadmium	Metals	Aquatic Life	To be completed in a future project
		Low flow alterations	Not Applicable; Non-Pollutant	Aquatic Life & Primary Contact Recreation	Not yet addressed by a TMDL or restoration plan
		Alteration in streamside or littoral vegetative covers	Not Applicable; Non-Pollutant	Aquatic Life	Addressed by sediment TMDL in this document
RATTLESNAKE CREEK , headwaters to Dillon PWS off-channel well, T7S R10W S11	MT41B002_091	Copper	Metals	Aquatic Life	To be completed in a future project
		Cadmium	Metals	Aquatic Life	To be completed in a future project
		Nitrogen (Total)	Nutrients	Aquatic Life	To be completed in a future project
		Lead	Metals	Aquatic Life & Drinking Water	To be completed in a future project
		Sedimentation/Siltation	Sediment	Aquatic Life	Sediment TMDL contained in this document
		Phosphorus (Total)	Nutrients	Aquatic Life	To be completed in a future project
		Alteration in streamside or littoral vegetative covers	Not Applicable; Non-Pollutant	Aquatic Life	Addressed by sediment TMDL in this document

Table A-1. 2012 IR Impaired Waterbodies, Impairment Causes, Impaired Uses, and Impairment Cause Status in the Beaverhead TPA

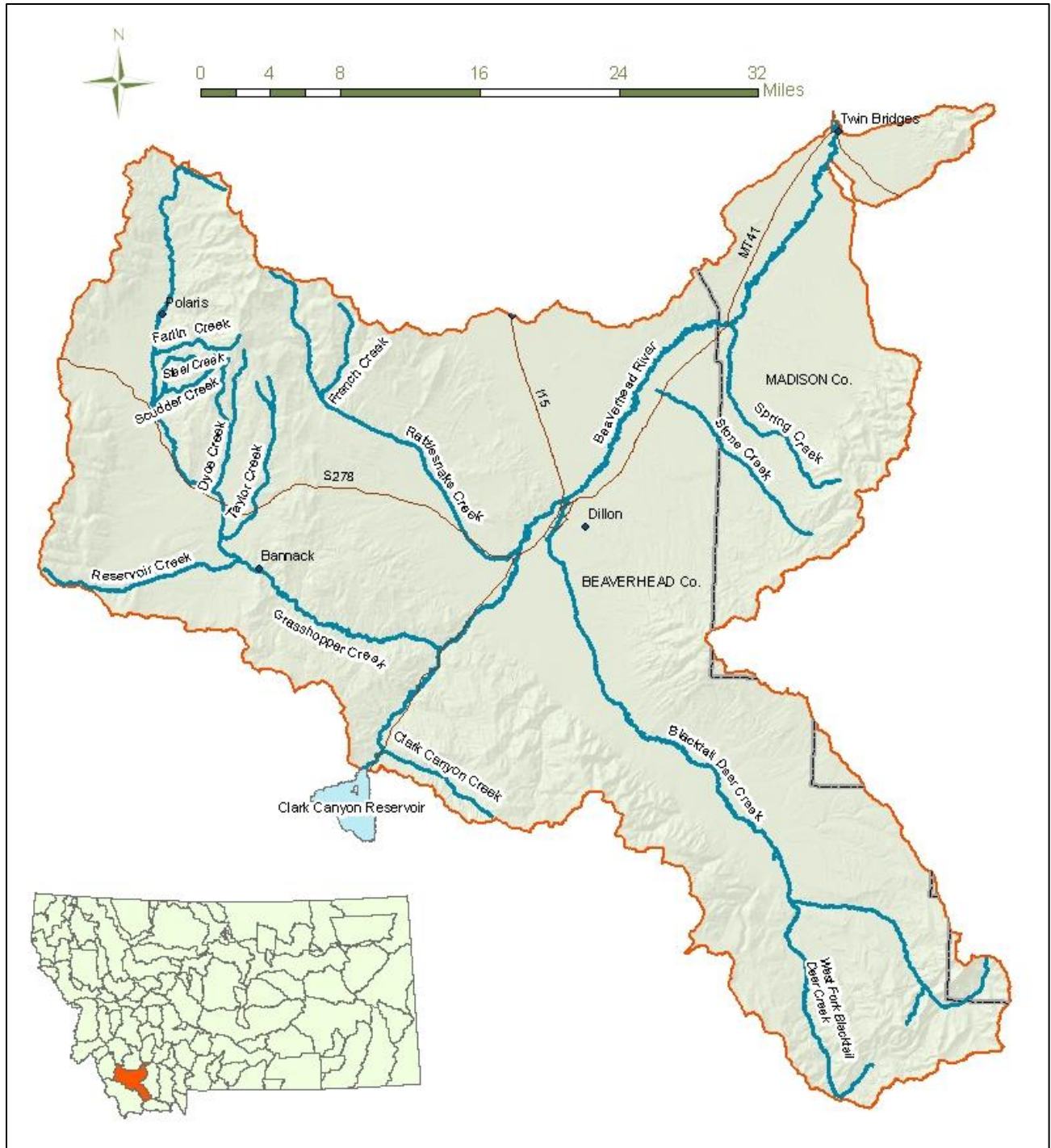
Waterbody & Location Description	Waterbody ID	Impairment Cause	TMDL Pollutant Category	Impaired Use(s)	Impairment Cause Status
RESERVOIR CREEK, headwaters to mouth (Grasshopper Creek)	MT41B002_120	Phosphorus (Total)	Nutrients	Aquatic Life	To be completed in a future project
		Nitrogen (Total)	Nutrients	Aquatic Life	To be completed in a future project
		Sedimentation/Siltation	Sediment	Aquatic Life	Sediment TMDL contained in this document
		Alteration in streamside or littoral vegetative covers	Not Applicable; Non-Pollutant	Aquatic Life	Addressed by sediment TMDL in this document
SCUDDER CREEK, headwaters to mouth (Grasshopper Creek), T6S R12W S19	MT41B002_180	Sedimentation/Siltation	Sediment	Aquatic Life	Sediment TMDL contained in this document
		Nitrogen (Total)	Nutrients	Aquatic Life	To be completed in a future project
		Alteration in streamside or littoral vegetative covers	Not Applicable; Non-Pollutant	Aquatic Life	Addressed by sediment TMDL in this document
SPRING CREEK, headwaters to mouth (Beaverhead River)	MT41B002_080	Nitrogen (Total)	Nutrients	Aquatic Life	To be completed in a future project
		Arsenic	Metals	Agricultural & Drinking Water	To be completed in a future project
		Sedimentation/Siltation	Sediment	Aquatic Life	Sediment TMDL contained in this document
		Chlorophyll- <i>a</i>	Not Applicable; Non-Pollutant	Primary Contact Recreation	Not yet addressed by a TMDL or restoration plan
		Low flow alterations	Not Applicable; Non-Pollutant	Aquatic Life & Primary Contact Recreation	Not yet addressed by a TMDL or restoration plan
		Alteration in streamside or littoral vegetative covers	Not Applicable; Non-Pollutant	Aquatic Life	Addressed by sediment TMDL in this document

Table A-1. 2012 IR Impaired Waterbodies, Impairment Causes, Impaired Uses, and Impairment Cause Status in the Beaverhead TPA

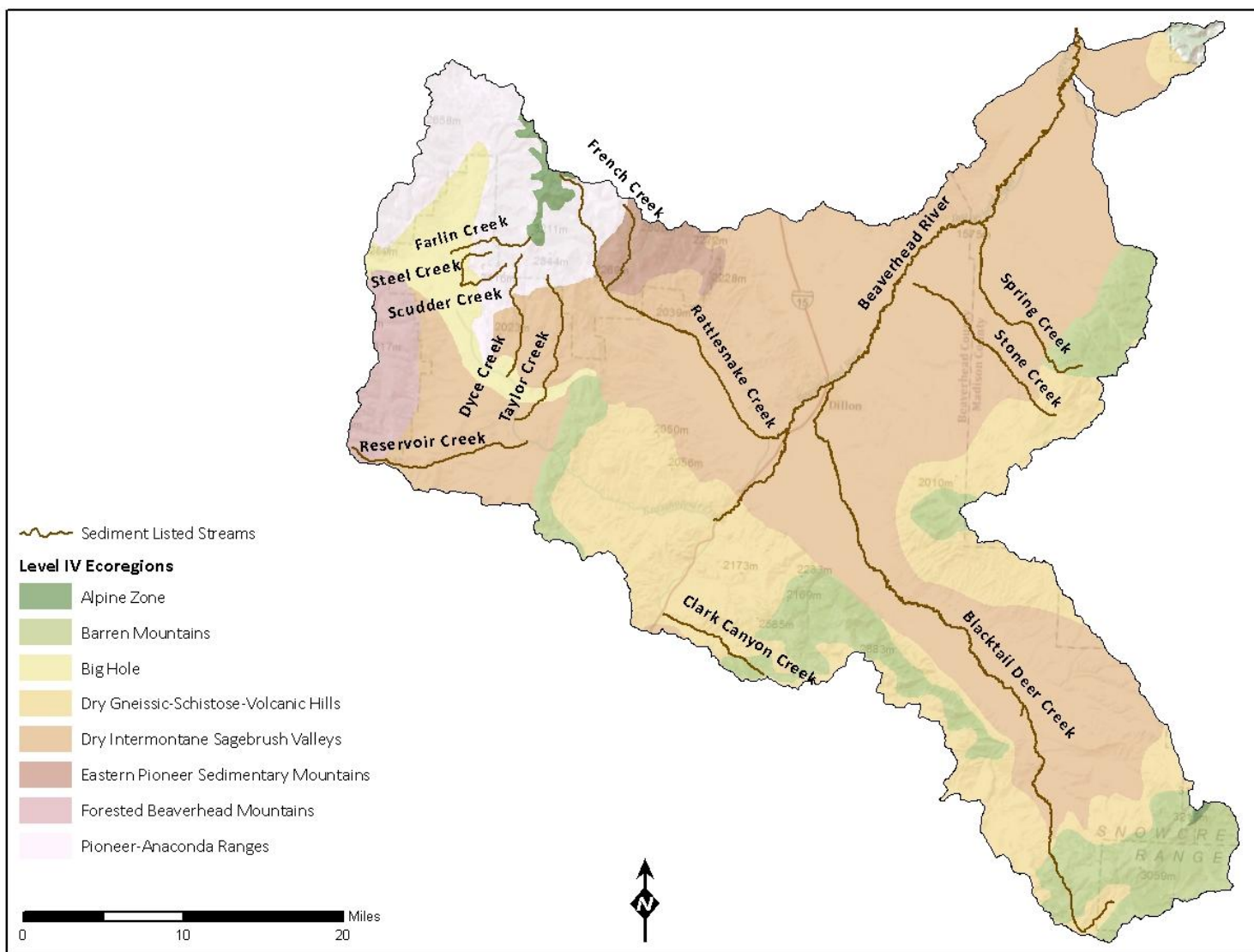
Waterbody & Location Description	Waterbody ID	Impairment Cause	TMDL Pollutant Category	Impaired Use(s)	Impairment Cause Status
STEEL CREEK , headwaters to mouth (Driscol Creek), T6S R12W S18	MT41B002_160	Phosphorus (Total)	Nutrients	Aquatic Life	To be completed in a future project
		Nitrogen (Total)	Nutrients	Aquatic Life	To be completed in a future project
		Solids (Suspended/Bedload)	Sediment	Aquatic Life & Primary Contact Recreation	Sediment TMDL contained in this document
		Sedimentation/Siltation	Sediment	Aquatic Life	Sediment TMDL contained in this document
		Arsenic	Metals	Agricultural, Drinking Water, & Aquatic Life	To be completed in a future project
		Alteration in streamside or littoral vegetative covers	Not Applicable; Non-Pollutant	Aquatic Life	Addressed by sediment TMDL in this document
STONE CREEK , confluence with unnamed creek in T6S R7W S34 near Beaverhead/Madison county border	MT41B002_131	Phosphorus (Total)	Nutrients	Primary Contact Recreation	To be completed in a future project
		Nitrate/Nitrite (Nitrite + Nitrate as N)	Nutrients	Aquatic Life & Primary Contact Recreation	To be completed in a future project
		Sedimentation/Siltation	Sediment	Aquatic Life	Sediment TMDL contained in this document
		Arsenic	Metals	Agricultural, Drinking Water, & Aquatic Life	To be completed in a future project
		Chlorophyll- <i>a</i>	Not Applicable; Non-Pollutant	Aquatic Life & Primary Contact Recreation	Not yet addressed by a TMDL or restoration plan
		Alteration in streamside or littoral vegetative covers	Not Applicable; Non-Pollutant	Aquatic Life	Addressed by sediment TMDL in this document
STONE CREEK , Left Fork and Middle Fork to confluence of unnamed tributary, T6S R7W S34	MT41B002_132	Turbidity	Sediment	Aquatic Life	Addressed by sediment TMDL in this document
		Nitrates	Nutrients	Aquatic Life	To be completed in a future project
		Sedimentation/Siltation	Sediment	Aquatic Life & Primary Contact Recreation	Sediment TMDL contained in this document
		Low flow alterations	Not Applicable; Non-Pollutant	Aquatic Life & Primary Contact Recreation	Not yet addressed by a TMDL or restoration plan
		Alteration in streamside or littoral vegetative covers	Not Applicable; Non-Pollutant	Aquatic Life	Addressed by sediment TMDL

Table A-1. 2012 IR Impaired Waterbodies, Impairment Causes, Impaired Uses, and Impairment Cause Status in the Beaverhead TPA

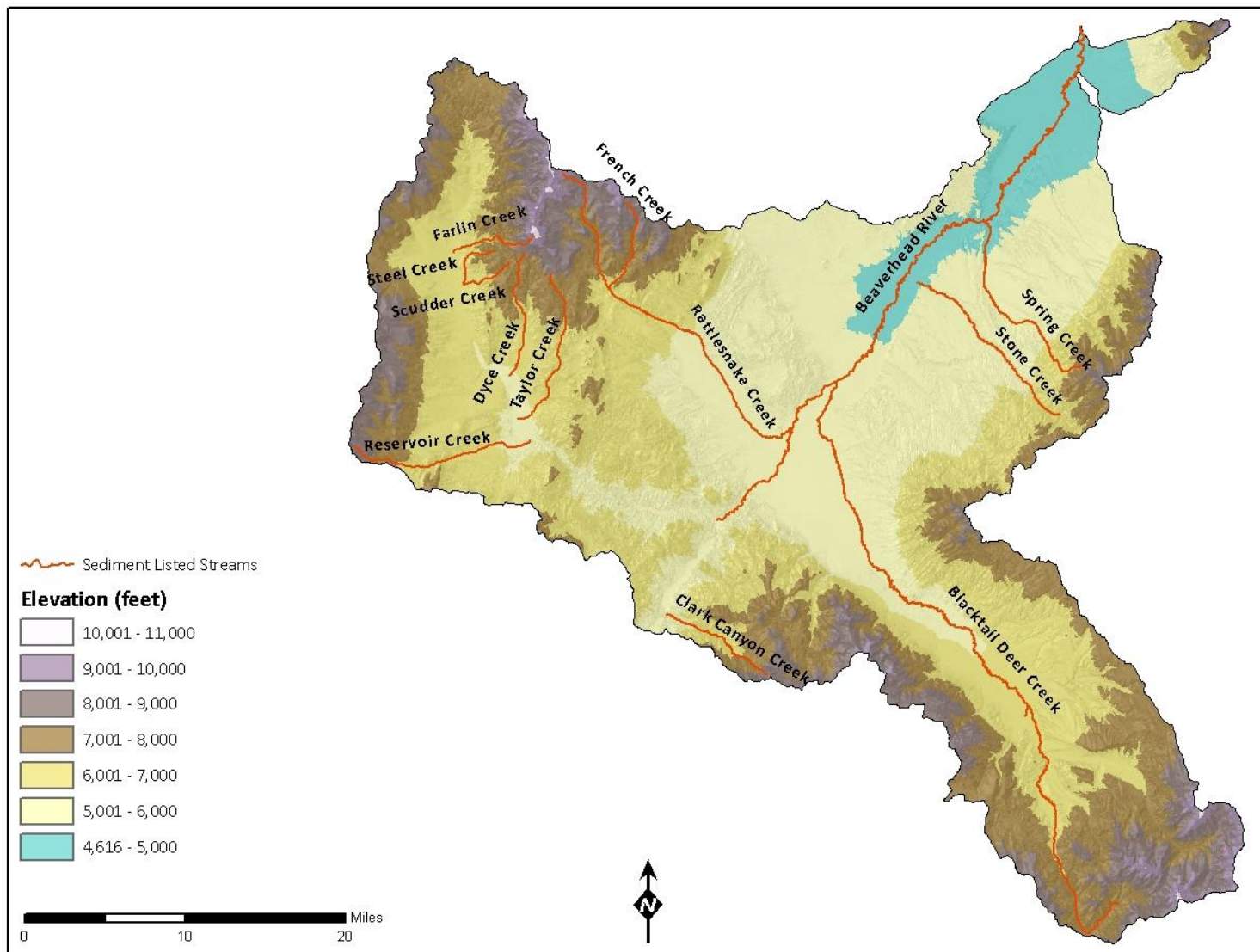
Waterbody & Location Description	Waterbody ID	Impairment Cause	TMDL Pollutant Category	Impaired Use(s)	Impairment Cause Status
TAYLOR CREEK , headwaters to mouth (Grasshopper Creek)	MT41B002_170	Nitrogen (Total)	Nutrients	Aquatic Life	To be completed in a future project
		Sedimentation/Siltation	Sediment	Aquatic Life	Sediment TMDL contained in this document
		Alteration in streamside or littoral vegetative covers	Not Applicable; Non-Pollutant	Aquatic Life	Addressed by sediment TMDL
WEST FORK BLACKTAIL DEER CREEK , headwaters to mouth (Blacktail Deer Creek)	MT41B002_060	Sedimentation/Siltation	Sediment	Aquatic Life	Sediment TMDL contained in this document
		Arsenic	Metals	Agricultural & Drinking Water	To be completed in a future project
		Chlorophyll- <i>a</i>	Not Applicable; Non-Pollutant	Primary Contact Recreation	Not yet addressed by a TMDL or restoration plan
		Alteration in streamside or littoral vegetative covers	Not Applicable; Non-Pollutant	Aquatic Life	Addressed by sediment TMDL
WEST FORK DYCE CREEK , headwaters to mouth (Dyce Creek)	MT41B002_070	Nitrogen (Total)	Nutrients	Aquatic Life	To be completed in a future project
		Sedimentation/Siltation	Sediment	Aquatic Life	Sediment TMDL contained in this document
		Manganese	Metals	Aquatic Life	To be completed in a future project
		Alteration in streamside or littoral vegetative covers	Not Applicable; Non-Pollutant	Aquatic Life	Addressed by sediment TMDL



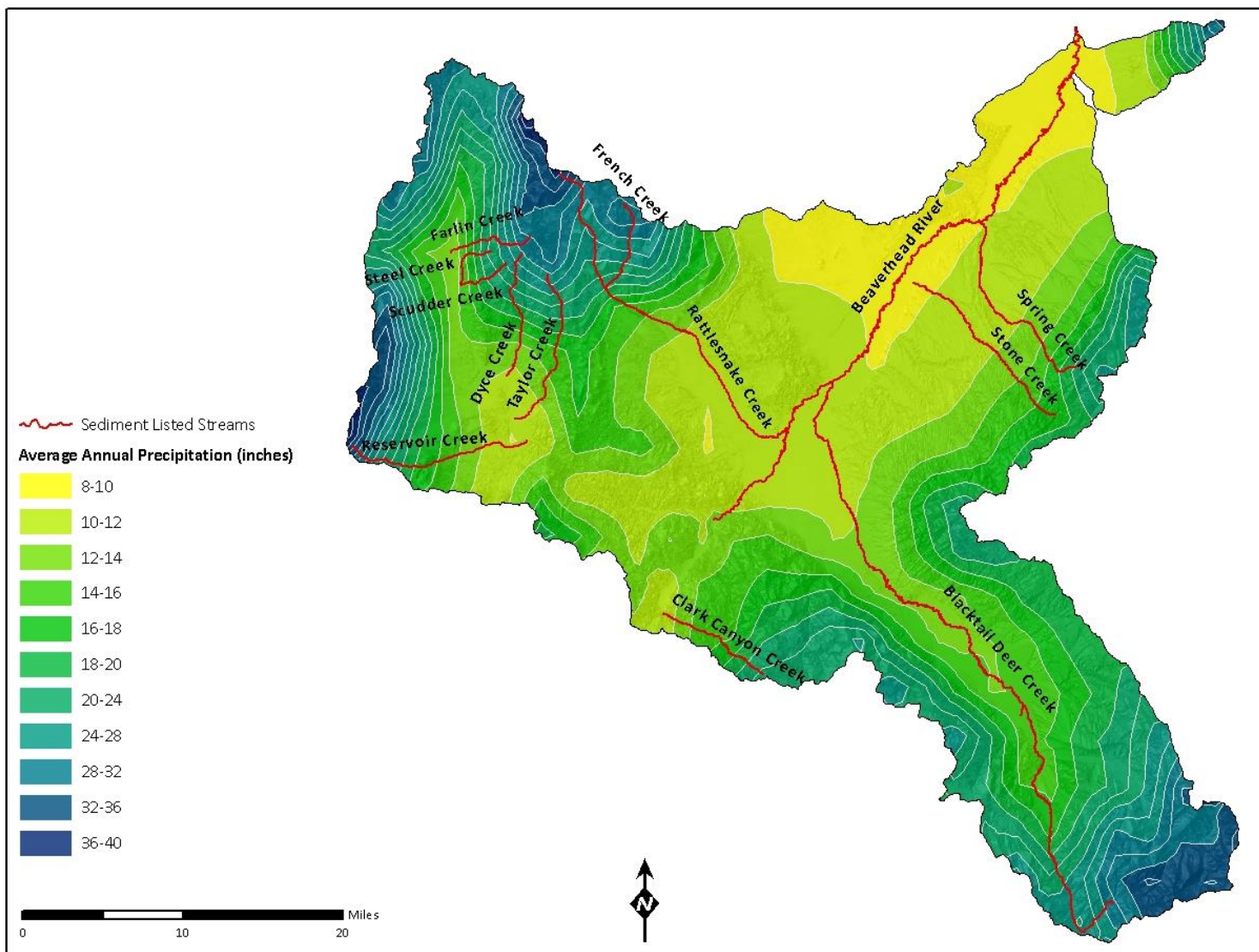
Map A-2. Beaverhead TMDL planning area location map



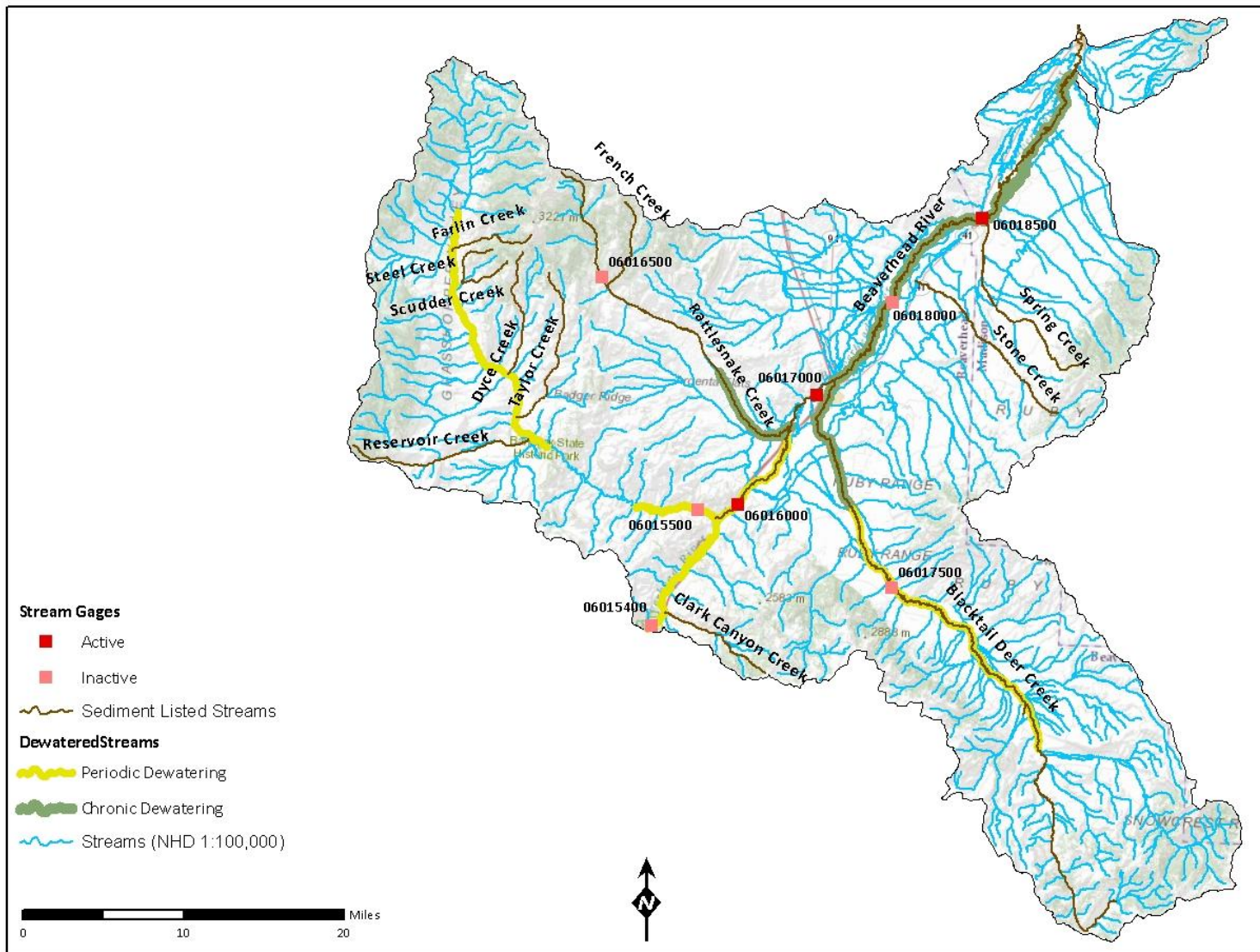
Map A-3. Level IV Ecoregions in the Beaverhead TMDL planning area



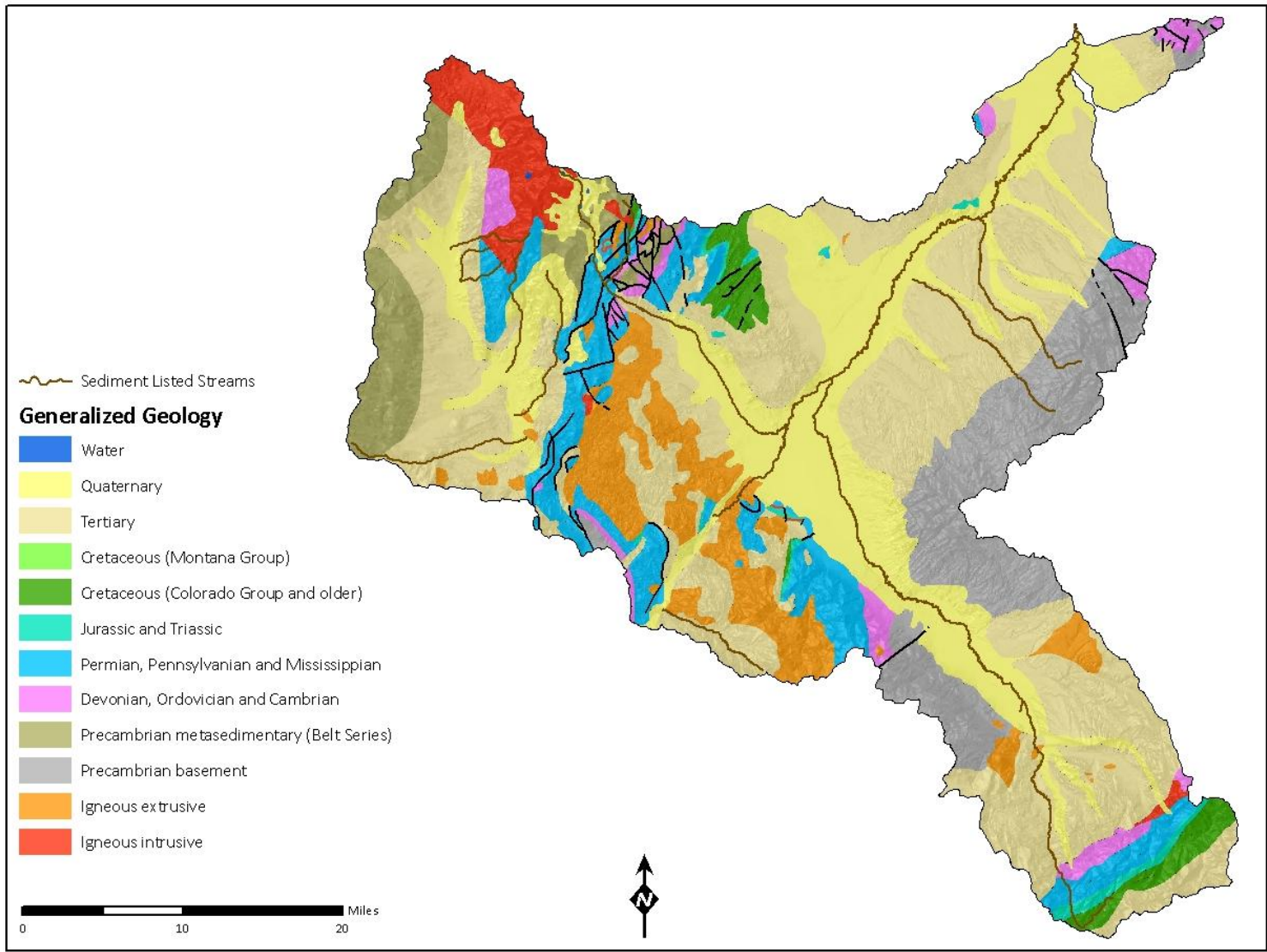
Map A-4. Topography in the Beaverhead TMDL planning area



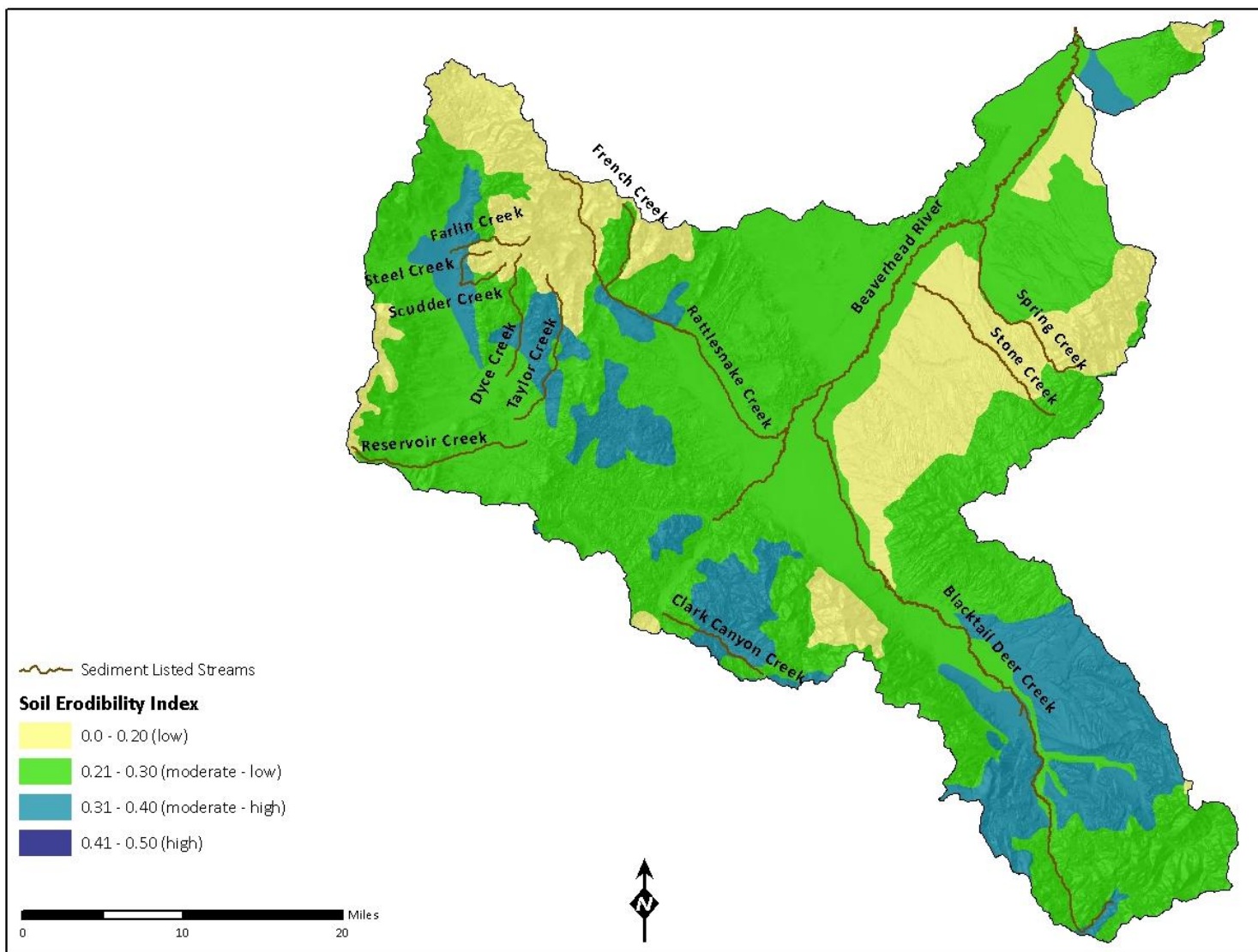
Map A-5. Precipitation in the Beaverhead TMDL planning area



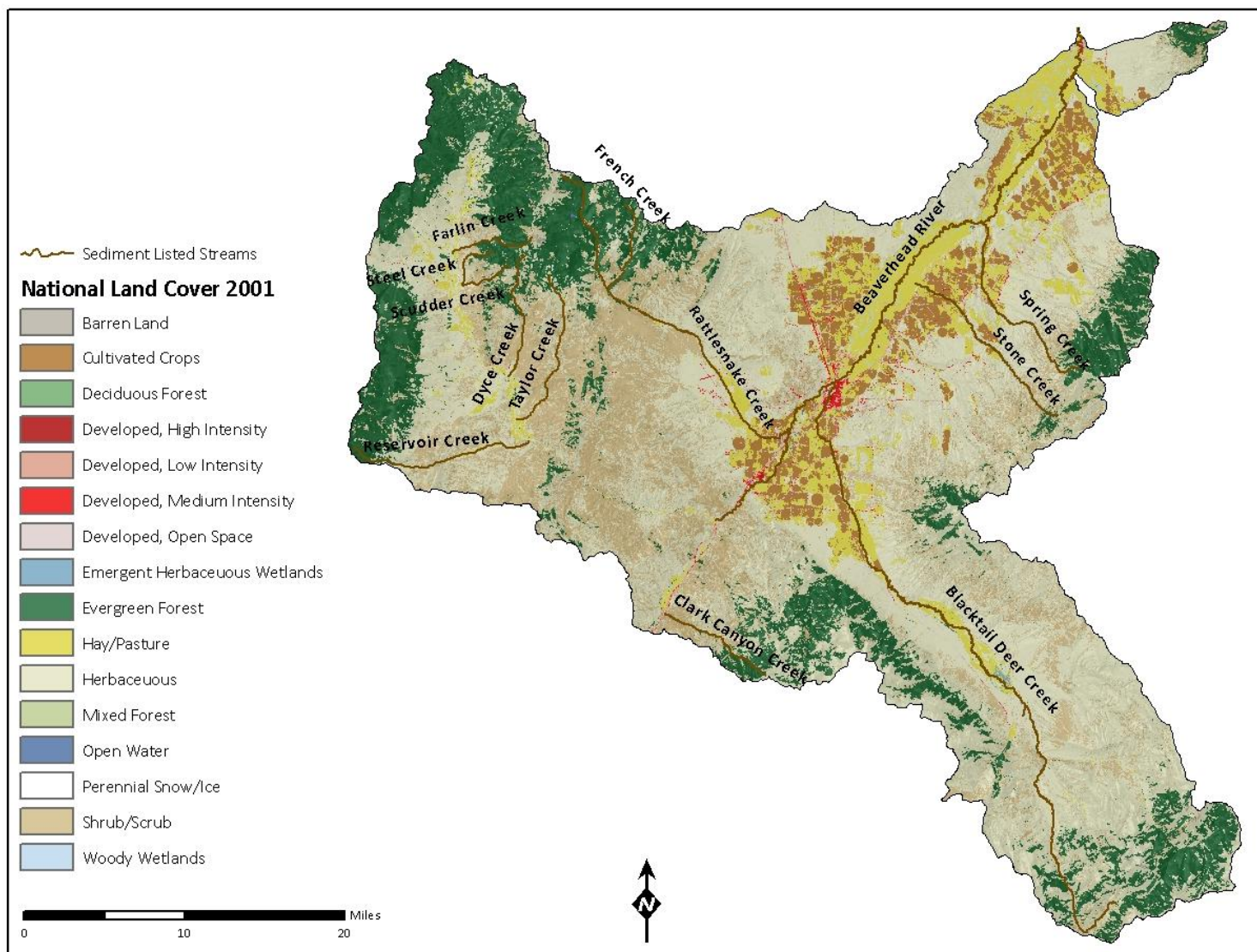
Map A-6. Dewatered streams in the Beaverhead TMDL planning area

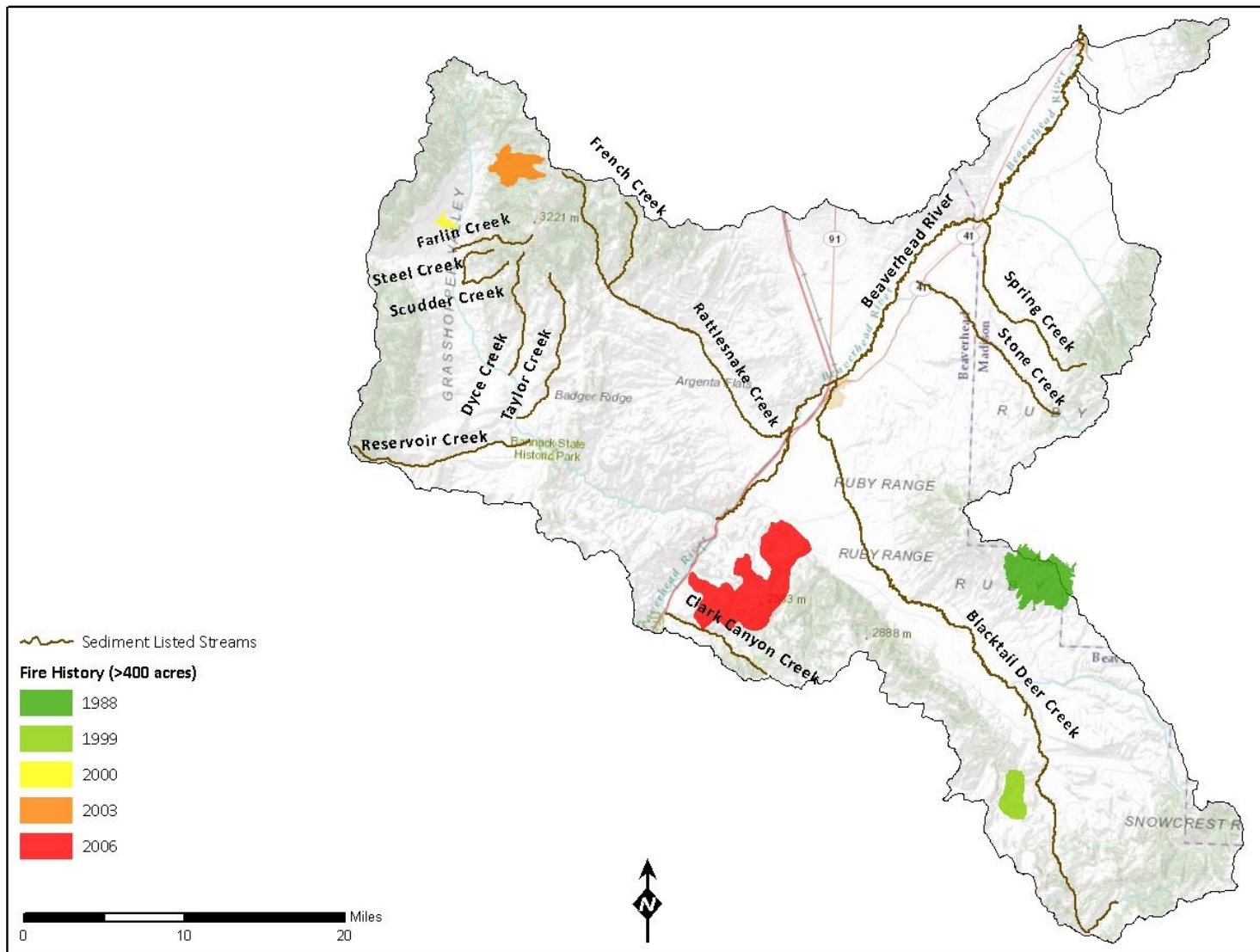


Map A-7. Geology in the Beaverhead TMDL planning area

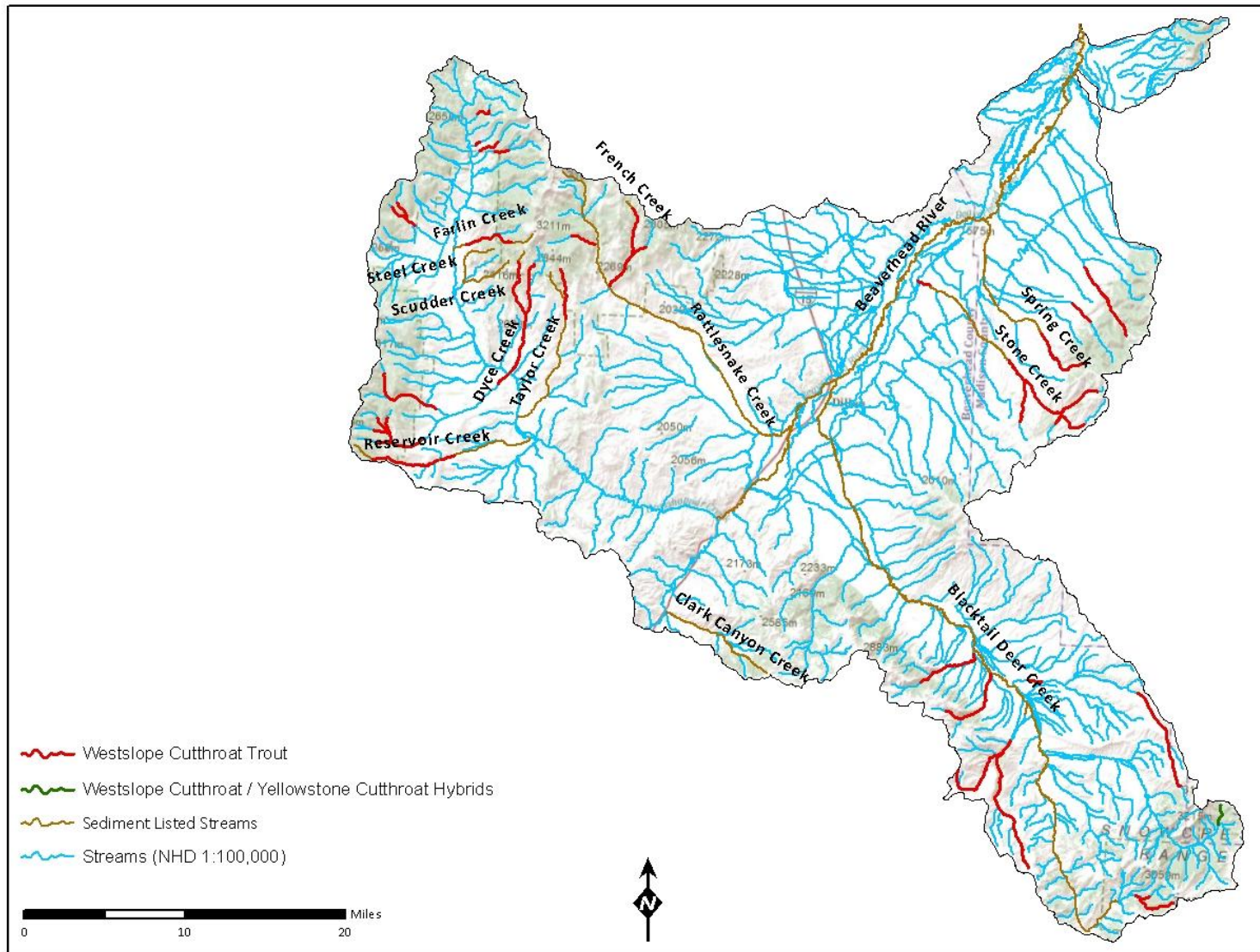


Map A-8. Susceptibility to erosion in the Beaverhead TMDL planning area

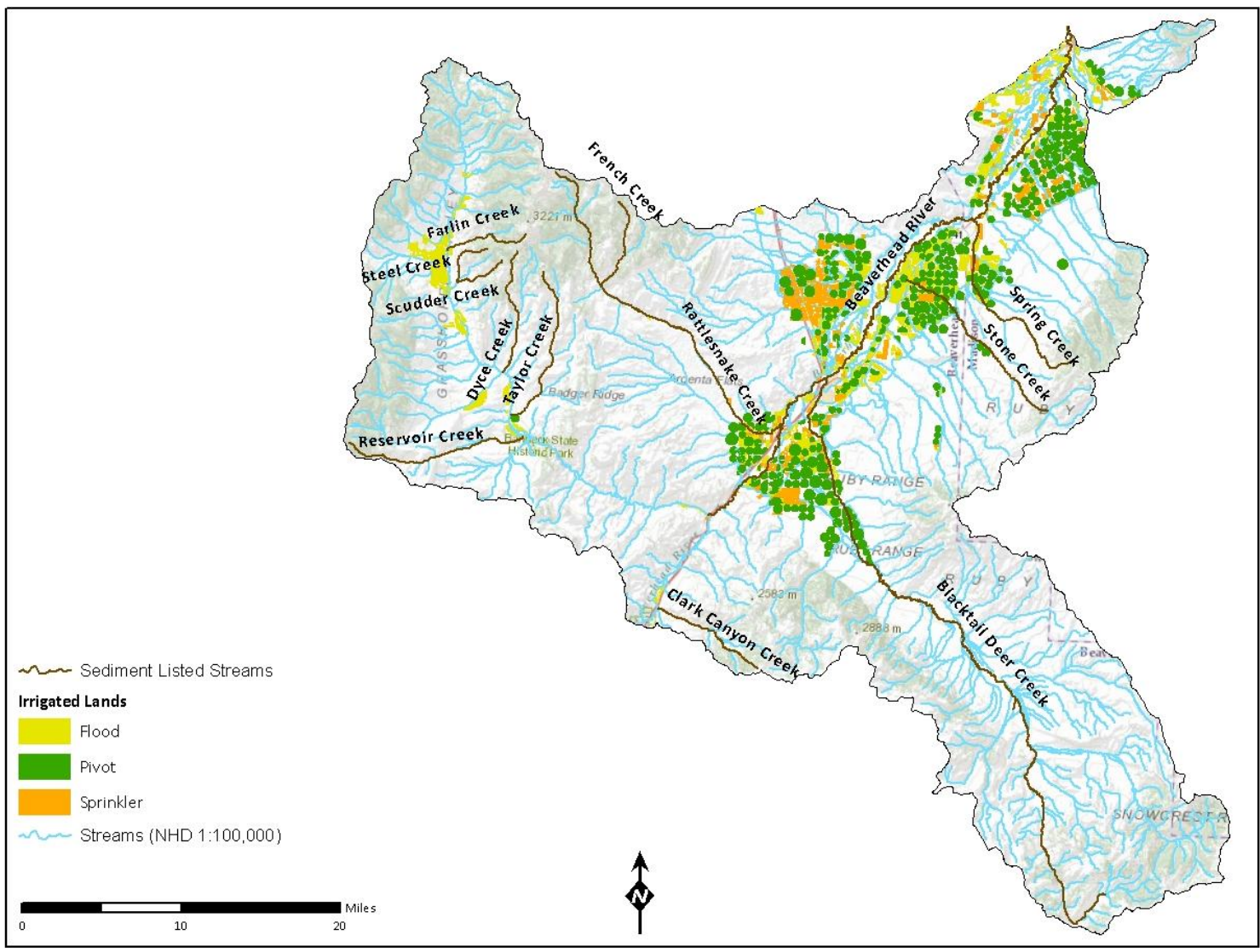




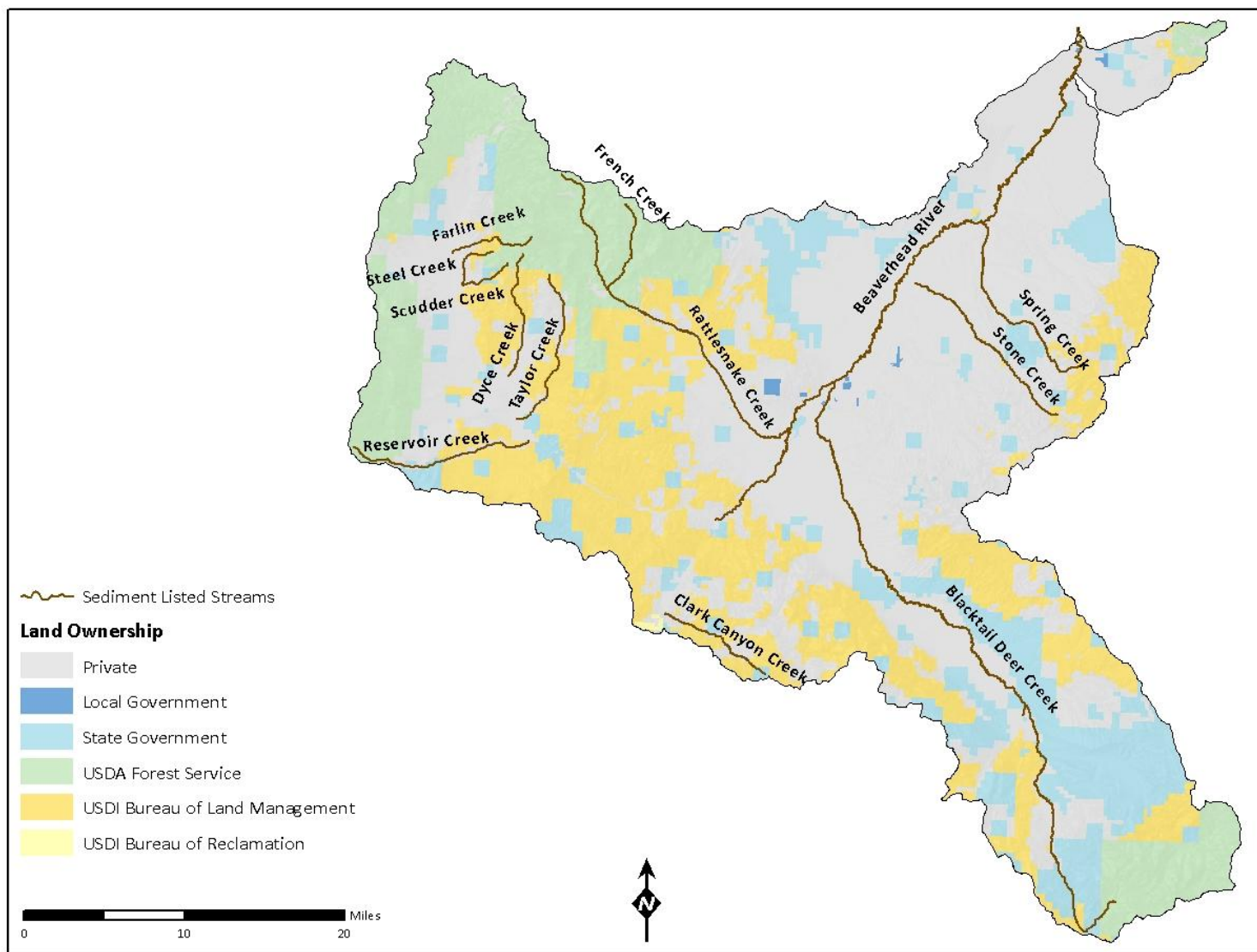
Map A-10. Recent significant fires in the Beaverhead TMDL planning area



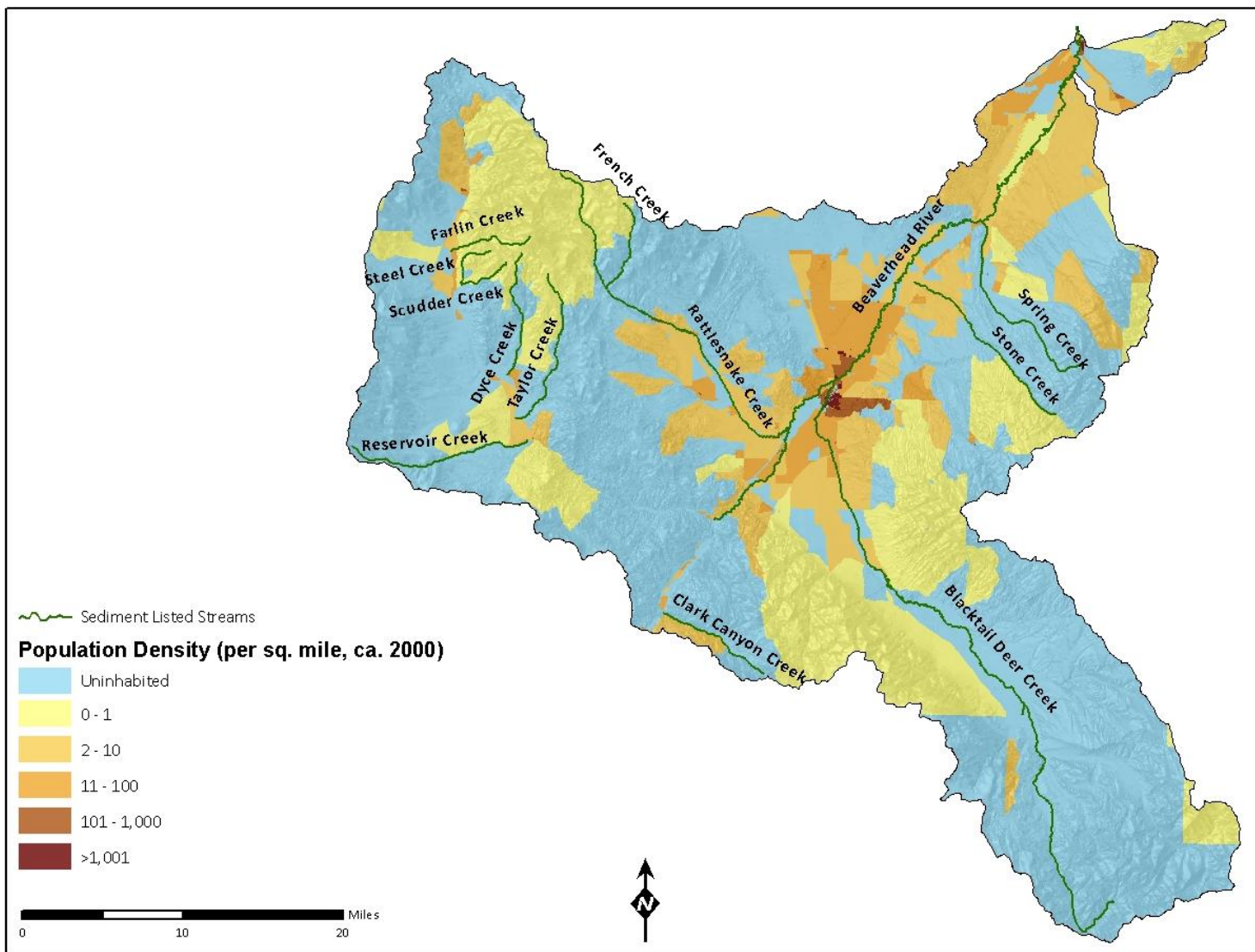
Map A-11. Fish distribution in the Beaverhead TMDL planning area



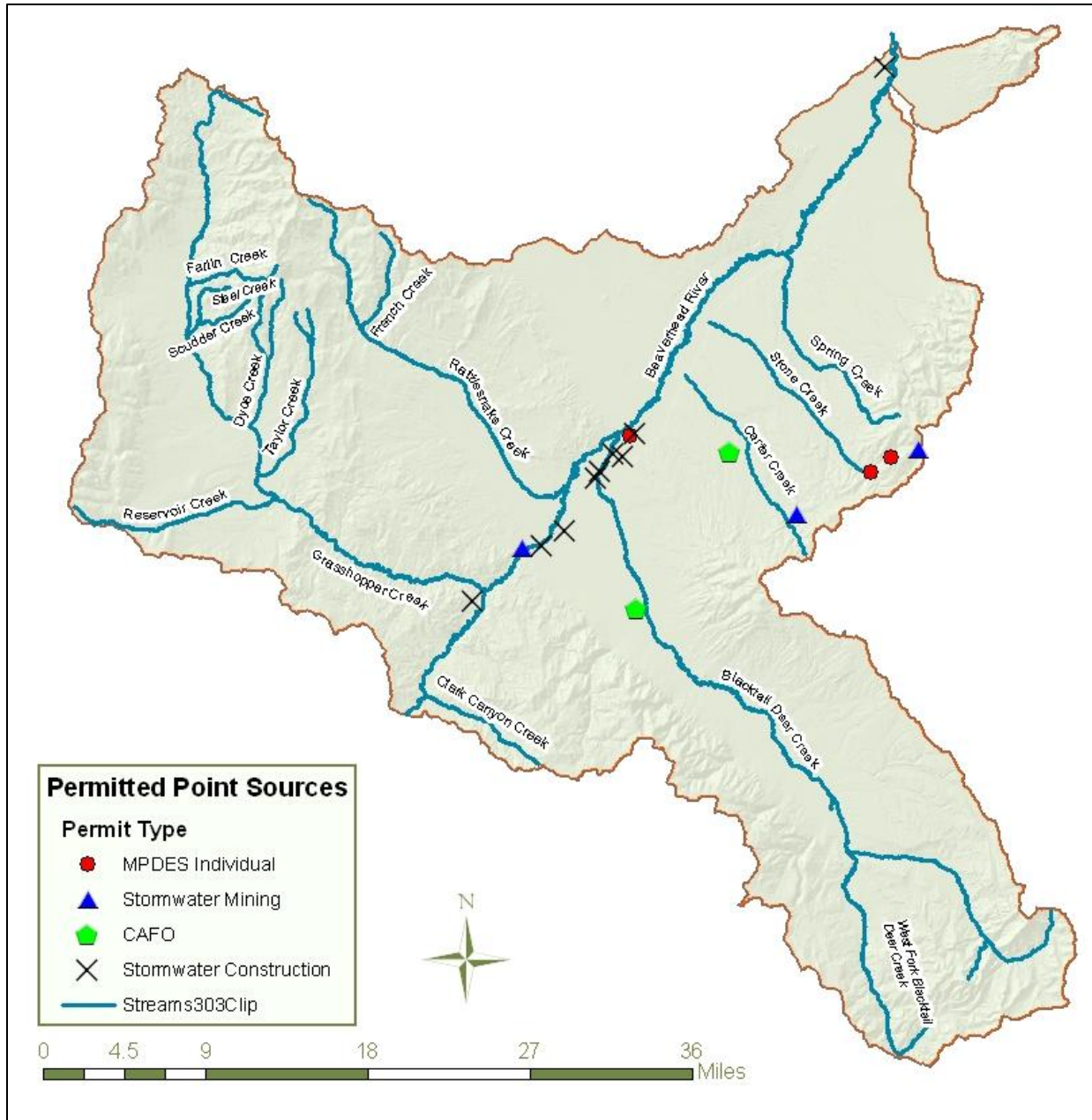
Map A-12. Irrigation in the Beaverhead TMDL planning area



Map A-13. Land ownership in the Beaverhead TMDL planning area



Map A-14. Population in the Beaverhead TMDL planning area



Map A-15. Point sources in the Beaverhead TMDL planning area