

## Appendix D – TMDL and Watershed Restoration Plan Progress

### Montana TMDL Project Areas

The map below depicts DEQ's past, present, and ongoing TMDL development projects. DEQ uses the following factors to prioritize new TMDL development projects:



- New individual point source permit application(s) or other immediate programmatic needs
- Degree of interest, support and available resources toward addressing nonpoint sources of pollution in an area
- Degree of impact to human health or aquatic life or other indicators of impairment severity
- The recreational, economic, and aesthetic importance of waterbodies in an area
- Recognition of a high quality resources in the early stage of degradation
- The ability to address the problem through TMDL implementation

### Montana TMDL Project Areas - 2017



TMDLs are specific to a waterbody segment - pollutant combination. Some planning areas with completed TMDLs may still require TMDL development for additional waterbody - pollutant combinations. Contact the DEQ at 406-444-6697 or refer to the final TMDL documents at <http://deq.mt.gov/Water/WQPB/tmdl/finalreports> for additional details.

In addition to the watersheds shown on this map, some large rivers and their associated reservoir systems represent separate TMDL project areas. These include the Clark Fork River, the Missouri River, and the Yellowstone River. Pre-TMDL development support work is underway in the Yellowstone River, while the Clark Fork River has a combination of approved and in-progress TMDLs.

-  Current TMDL project areas
-  Approved TMDL document or watershed plan
-  Combination approved & in-progress TMDLs
-  Not currently scheduled
-  Tribal (not under state jurisdiction)

**Table D-1. Montana Completed TMDL Documents**

<b>Completed TMDL Documents</b>	<b>EPA Approval Year</b>	<b>Pollutants Addressed</b>
Beaverhead - Jefferson River Temperature	2014	2
Beaverhead Sediment	2012	21
Big Creek - Columbia	2003	1
Big Creek - Yellowstone	2001	0
Big Sandy - Sage	2002	9
Big Springs	2005	4
Bitterroot Headwaters	2006	13
Bitterroot Sediment & Temperature	2011	20
Bitterroot Watershed	2014	19
Blackfoot Headwaters Addendum; Sandbar Creek Sediment	2014	1
Blackfoot Headwaters Metals	2003	30
Blackfoot Headwaters Sediment	2004	4
Bobtail Creek	2005	2
Bonita - Superior Metals	2013	14
Boulder - Big Timber	2009	15
Boulder - Elkhorn Metals	2012	70
Boulder - Elkhorn Sediment, Temperature, Nutrients	2013	25
Careless Creek	2001	1
Central Clark Fork Tributaries	2014	23
Clark Fork - Silver Bow Creek Metals	2014	40
Clark Fork River Nutrients	1998	15
Cooke City	2003	41
Dearborn	2005	3
Deep Creek	1996	1
Elk Creek	1998	1
Flathead Headwaters	2005	1
Flathead Lake Nutrients	2002	2
Flathead -Stillwater	2014	23

**Table D-1. Montana Completed TMDL Documents**

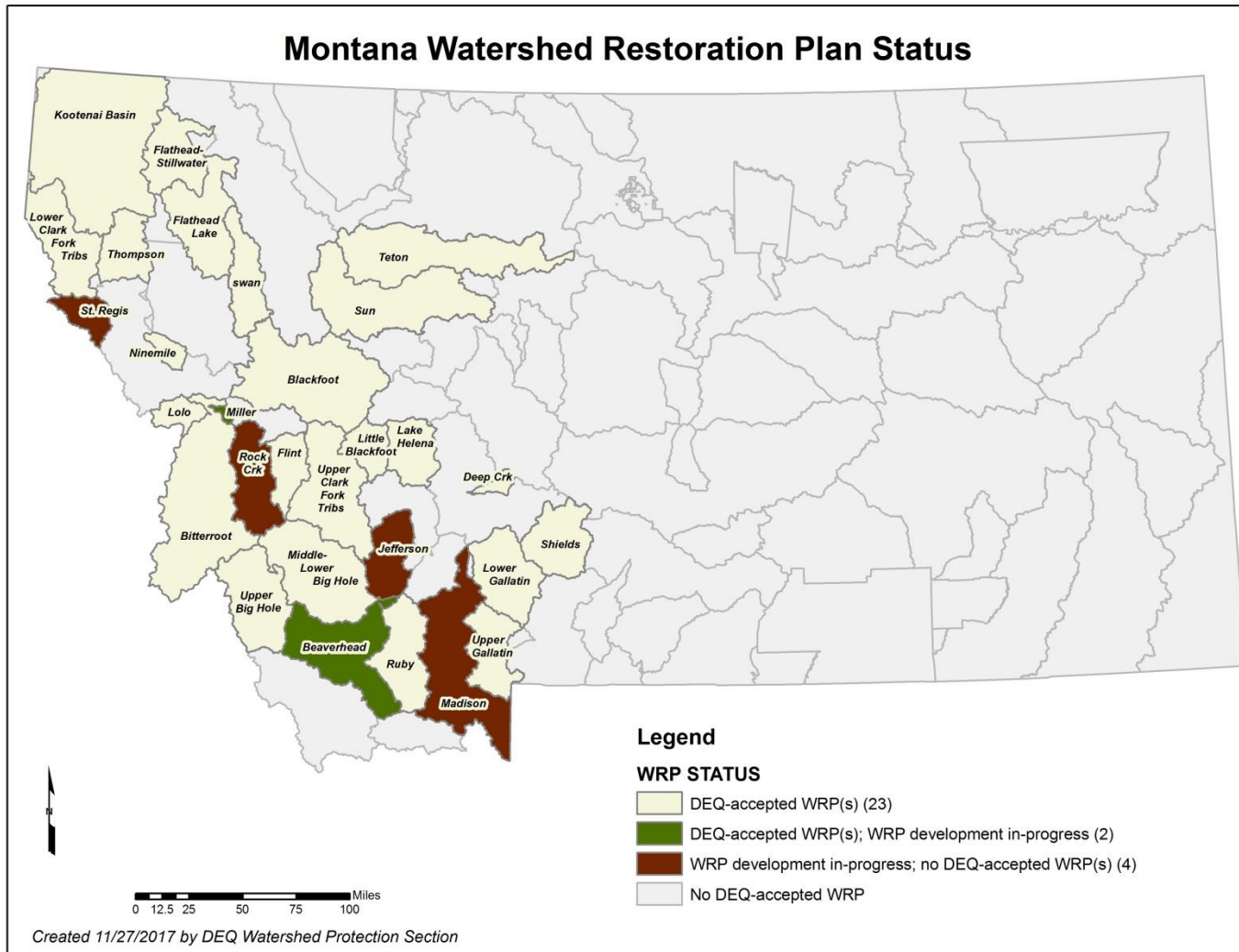
<b>Completed TMDL Documents</b>	<b>EPA Approval Year</b>	<b>Pollutants Addressed</b>
Flint Creek Metals Addendum; Douglass Creek Antimony	2015	1
Flint Metals & Sediment	2012	48
Flint Nutrients	2013	11
Grave Creek	2005	1
Jefferson Metals	2014	14
Judith Mountains	2013	34
Kootenai - Fisher	2014	20
Lake Helena	2006	105
Lake Helena Metals Addendum	2013	7
Landusky Metals	2012	70
Little Blackfoot	2011	64
Little Blackfoot Addendum	2014	10
Lone Tree Creek	2001	1
Lower Blackfoot	2009	12
Lower Blackfoot Nutrients	2013	10
Lower Clark Fork Tributaries	2010	5
Lower Gallatin	2013	41
Lower Gallatin pH Addition	2014	2
Middle & Lower Big Hole	2009	70
Middle Blackfoot - Nevada	2008	94
Middle Blackfoot - Nevada Addendum	2014	8
Missouri - Cascade/Belt Metals	2011	47
Ninemile	2005	10
Prospect Creek Metals	2006	8
Prospect Creek Sediment	2009	3
Redwater	2010	28
Rock Creek	2013	34
Ruby	2007	28

**Table D-1. Montana Completed TMDL Documents**

<b>Completed TMDL Documents</b>	<b>EPA Approval Year</b>	<b>Pollutants Addressed</b>
Shields	2009	4
St. Regis	2008	8
Sun	2005	18
Swan	2004	6
Teton	2003	21
Thompson	2014	30
Tobacco Phase 2	2014	3
Tobacco Sediment	2011	8
Upper & North Fork Big Hole	2009	24
Upper Clark Fork Phase 2	2014	25
Upper Clark Fork Tributaries	2010	79
Upper Clark Fork Tributaries Addendum	2014	3
Upper Jefferson Sediment	2009	7
Upper Lolo	2003	5
West Fork Gallatin	2010	9
Whitepine Creek Temperature	2014	1
Yaak	2008	3
Yaak Nutrients	2014	1
		<b><i>TOTAL - 1442</i></b>

Montana Watershed Restoration Plan Status

Watershed restoration plans (WRPs) are locally developed, locally led plans for addressing impairments to water quality. WRP development typically occurs after TMDL development, and can help guide and catalyze implementation of recommendations found within TMDL documents.



**Table D-2 Montana Watershed Restoration Plans (WRPs)**

<b>WRP</b>	<b>Sponsor</b>	<b>Status</b>
Beaverhead	Beaverhead Watershed Committee	Accepted 2014; Revision In Progress
Bitterroot	Bitter Root Water Forum	Accepted 2014
Blackfoot River	Blackfoot Challenge	Accepted 2014
Deep Creek	Broadwater Conservation District	Accepted 2014
Flathead	Flathead Conservation District	Accepted 2017
Flathead Lake	Flathead Lakers	Accepted 2014
Flint Creek	Flint Creek Watershed Group	Accepted 2014
Kootenai Basin	Kootenai River Network Inc.	Accepted 2015
Lake Helena	Lake Helena Watershed Group/Lewis and Clark Water Quality Protection District	Accepted 2016
Little Blackfoot	Trout Unlimited	Accepted 2016
Lolo Creek	Lolo Watershed Group	Accepted 2013
Lower Clark Fork	Lower Clark Fork Watershed Group	Accepted 2010
Lower Gallatin	Greater Gallatin Watershed Council	Accepted 2014
Madison River	Madison Conservation District	Under Development
Middle and Lower Big Hole Watershed	Big Hole Watershed Committee	Accepted 2013
Miller Creek	Missoula Valley Water Quality Protection District	Under Development
Ninemile Creek	Trout Unlimited	Accepted 2013
Rock Creek	Trout Unlimited	Under Development
Ruby	Ruby Watershed Group	Accepted 2015
Shields River Watershed	Park Conservation District	Accepted 2012
St. Regis	Trout Unlimited	Under Development
Sun River	Sun River Watershed Group	Accepted 2012
Swan Basin	Swan Ecosystem Center	Accepted 2012
Teton River	Teton Watershed Group	Accepted 2010
Upper & North Fork Big Hole Watershed	Big Hole Watershed Committee	Accepted 2012
Upper Clark Fork River Tributaries	Watershed Restoration Coalition	Accepted 2012
Upper Gallatin River	Gallatin River (Blue Water) Task Force	Accepted 2012
Upper Jefferson	Jefferson River Watershed Council	Under Development