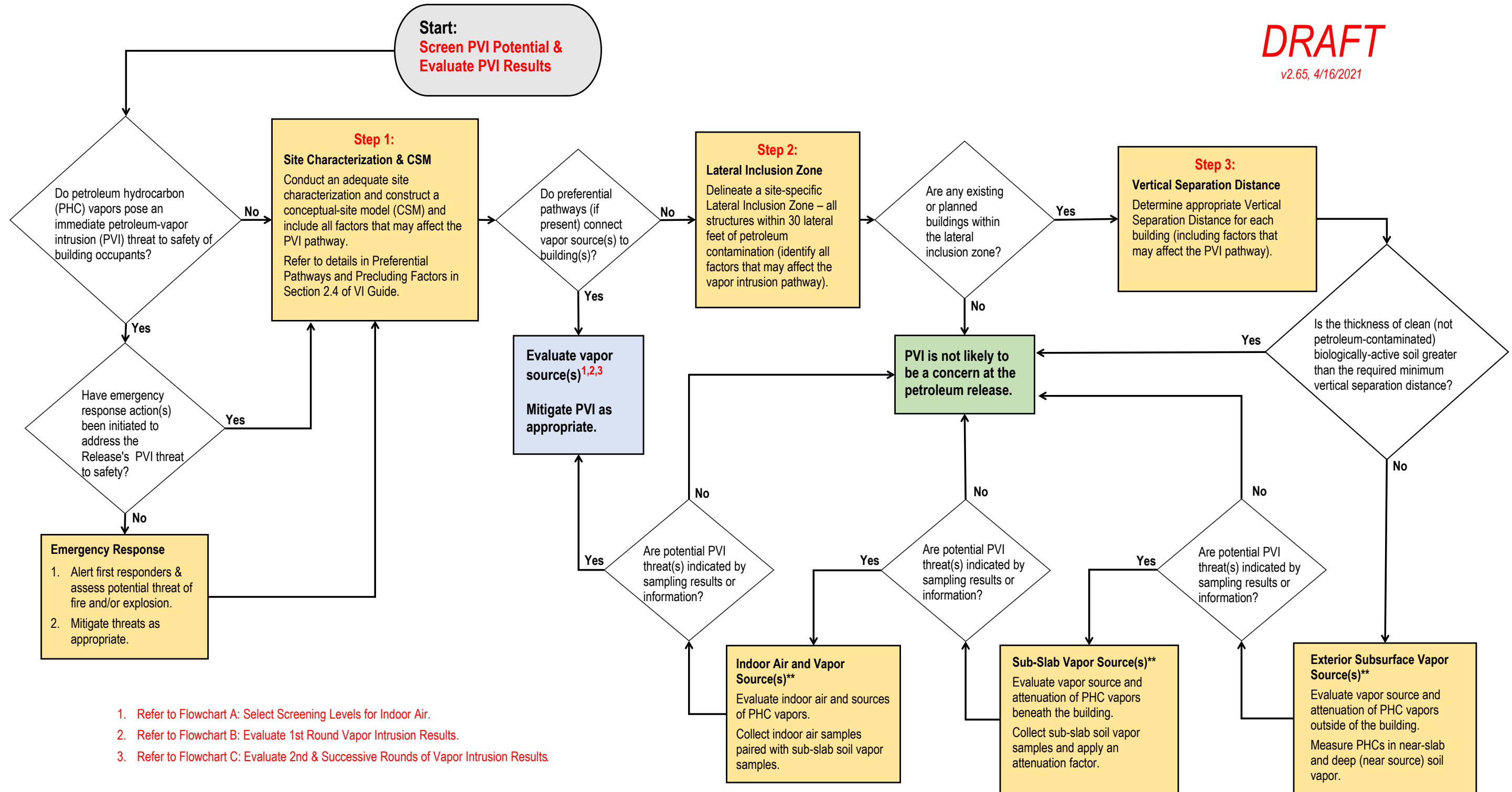


Flowchart D: Screen* Petroleum-Vapor Intrusion (PVI) Potential & Evaluate PVI Results

DRAFT

v2.65, 4/16/2021



* Adapted from EPA Technical Guide for PVI at LUST sites, June 2015, Page 9, Figure 1; modified by MT DEQ CSCB, March 2021

** Indoor air sampling is recommended if data and information indicate petroleum contamination is in direct contact with the building.