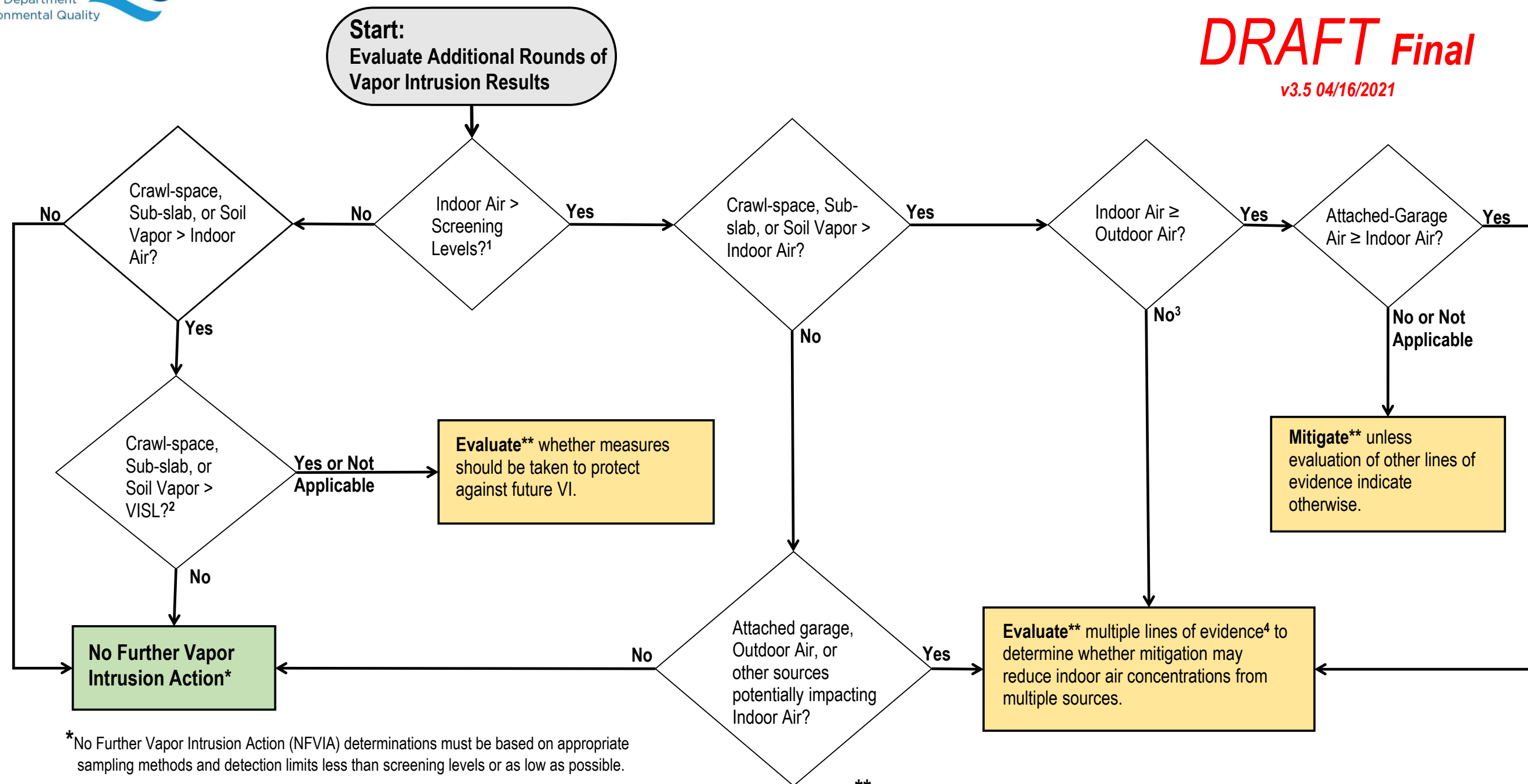


# Flowchart C: Evaluate 2<sup>nd</sup> & Successive Rounds of Vapor Intrusion Results

**DRAFT Final**

v3.5 04/16/2021



\*No Further Vapor Intrusion Action (NFVIA) determinations must be based on appropriate sampling methods and detection limits less than screening levels or as low as possible.

1. Refer to Flowchart A: Select Screening Levels for Indoor Air.
2. See Section-6 of the VI Guide regarding Vapor Intrusion Screening Levels (VISLs).
3. High levels of vapor contamination in outdoor air likely warrant additional investigation.
4. See Appendix B: Vapor Intrusion Decision-Making Flowchart Discussion page for information regarding multiple lines of evidence.

\*\*Evaluation of additional lines of evidence and/or mitigation work may require resampling. Review sampling methods prior to resampling to assure that representative samples are being collected. Evaluate results from new samples using Flowchart C: Evaluate 2<sup>nd</sup> & Successive Rounds of VI Results.