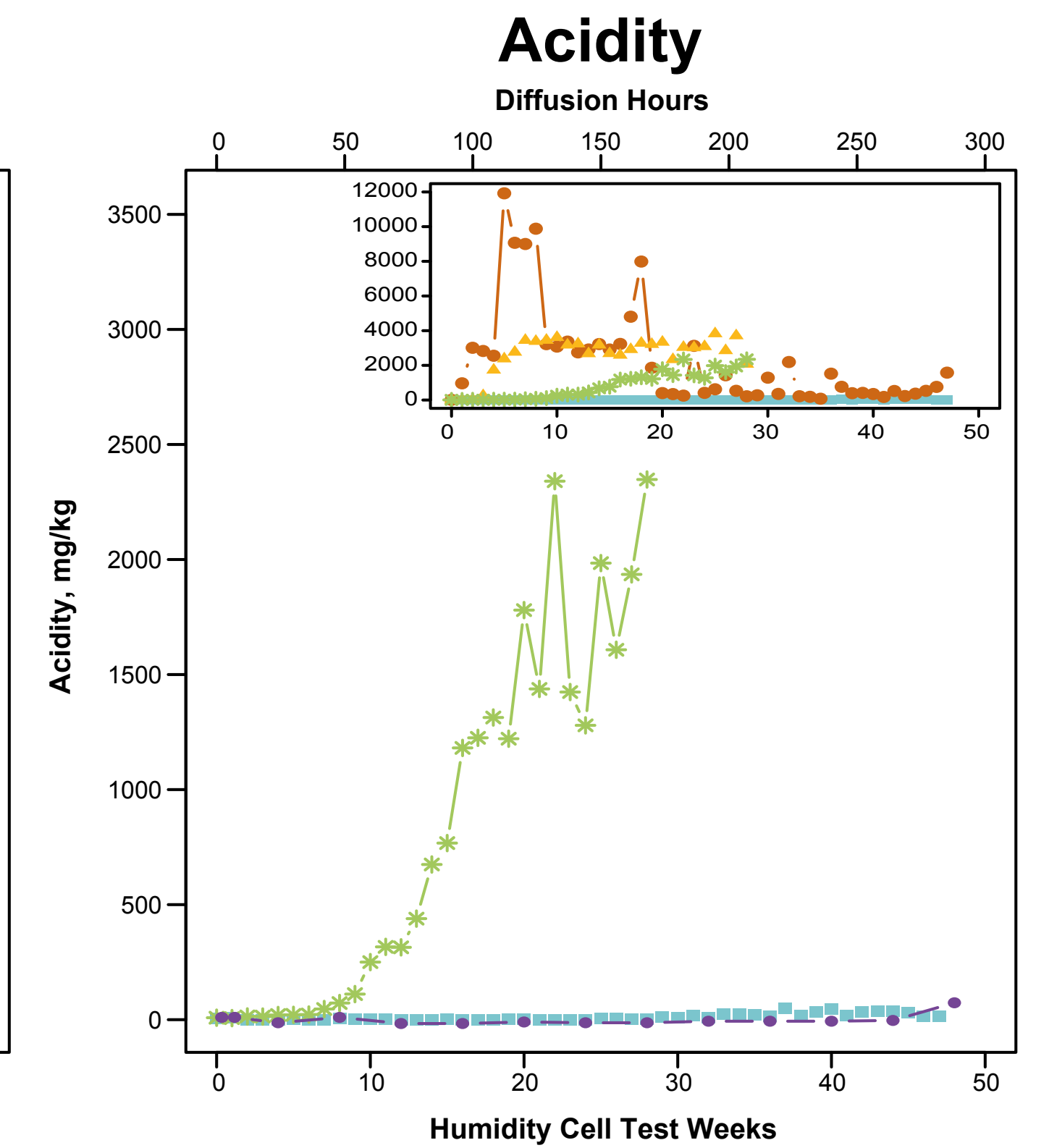
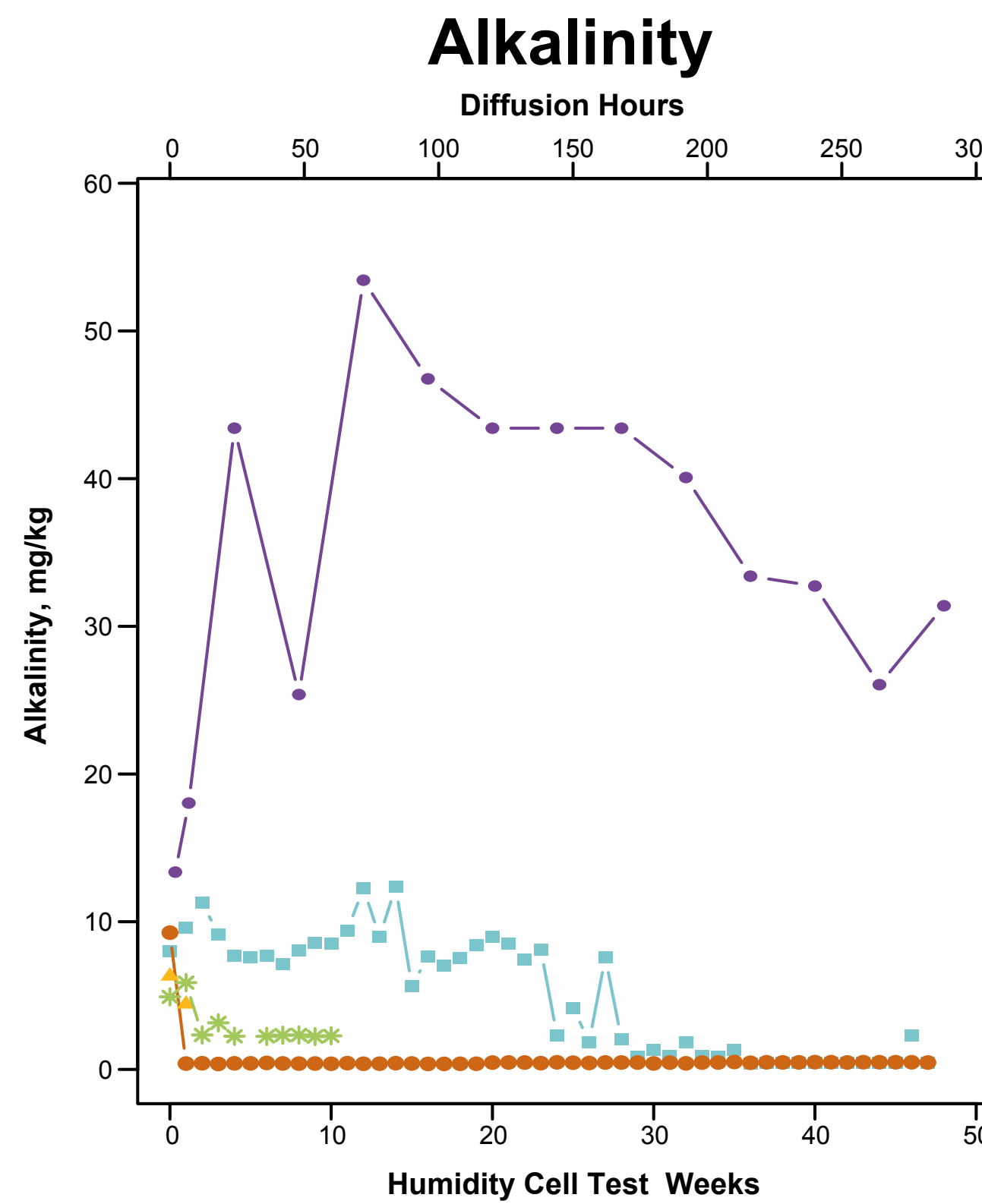
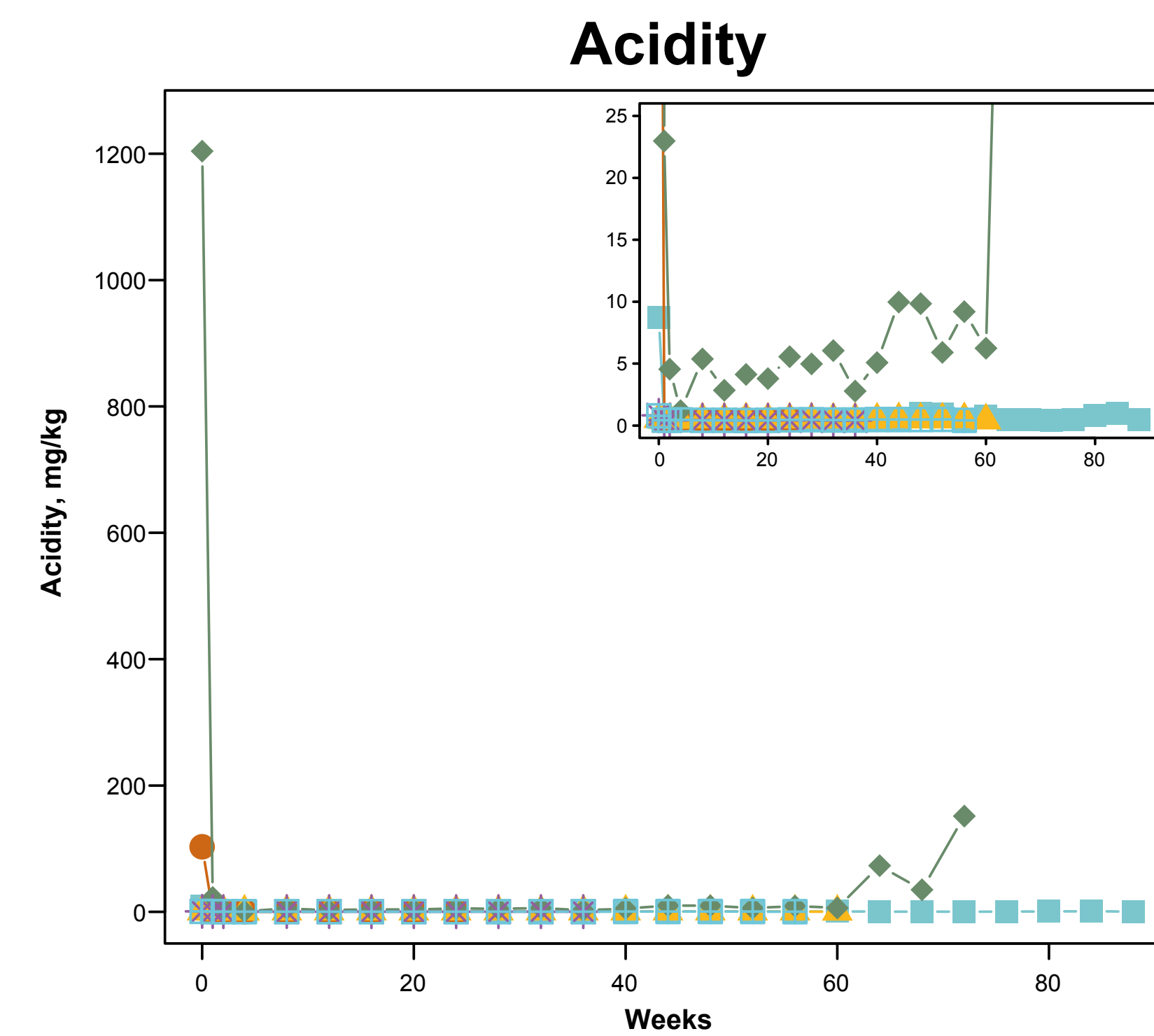
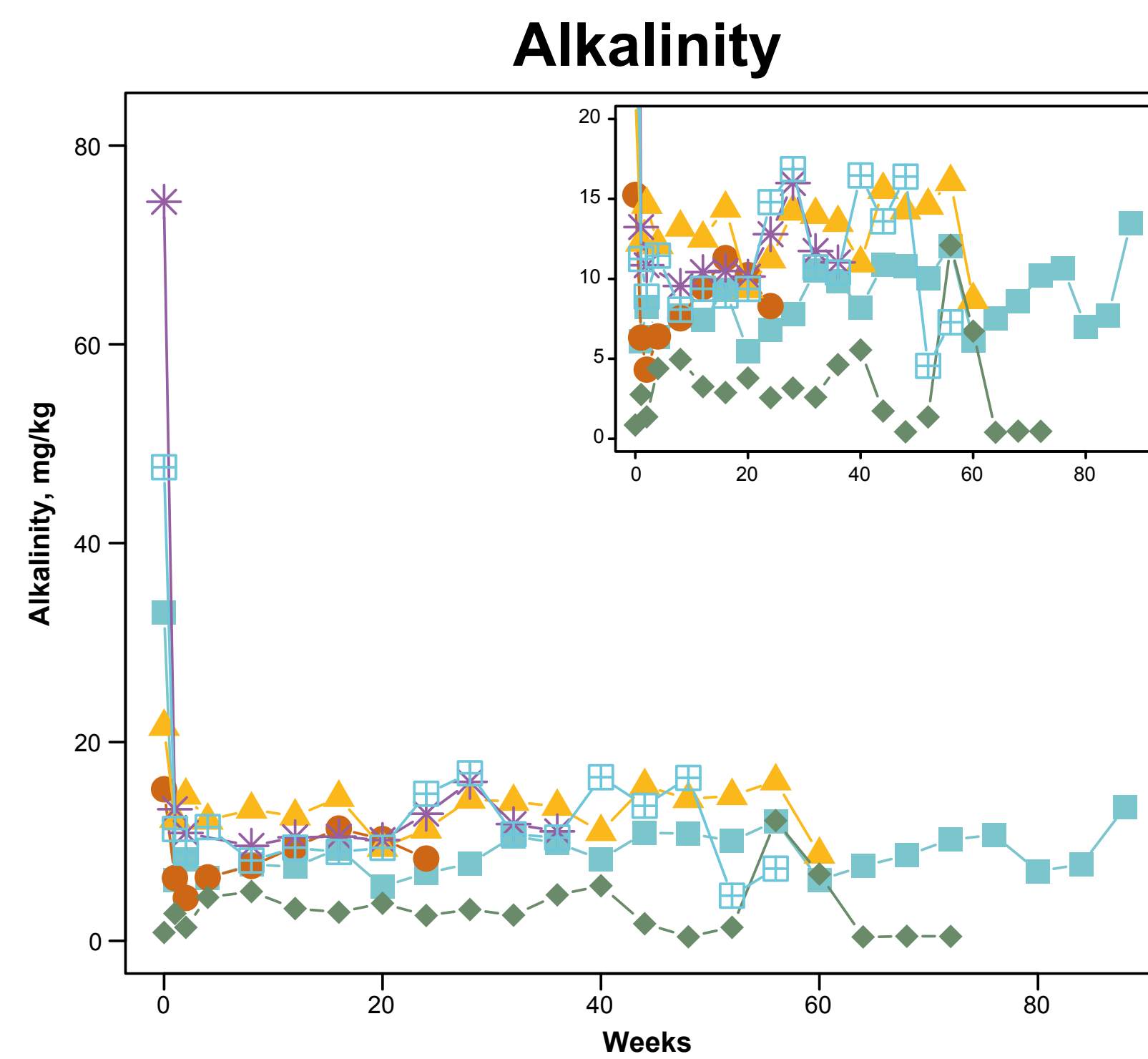
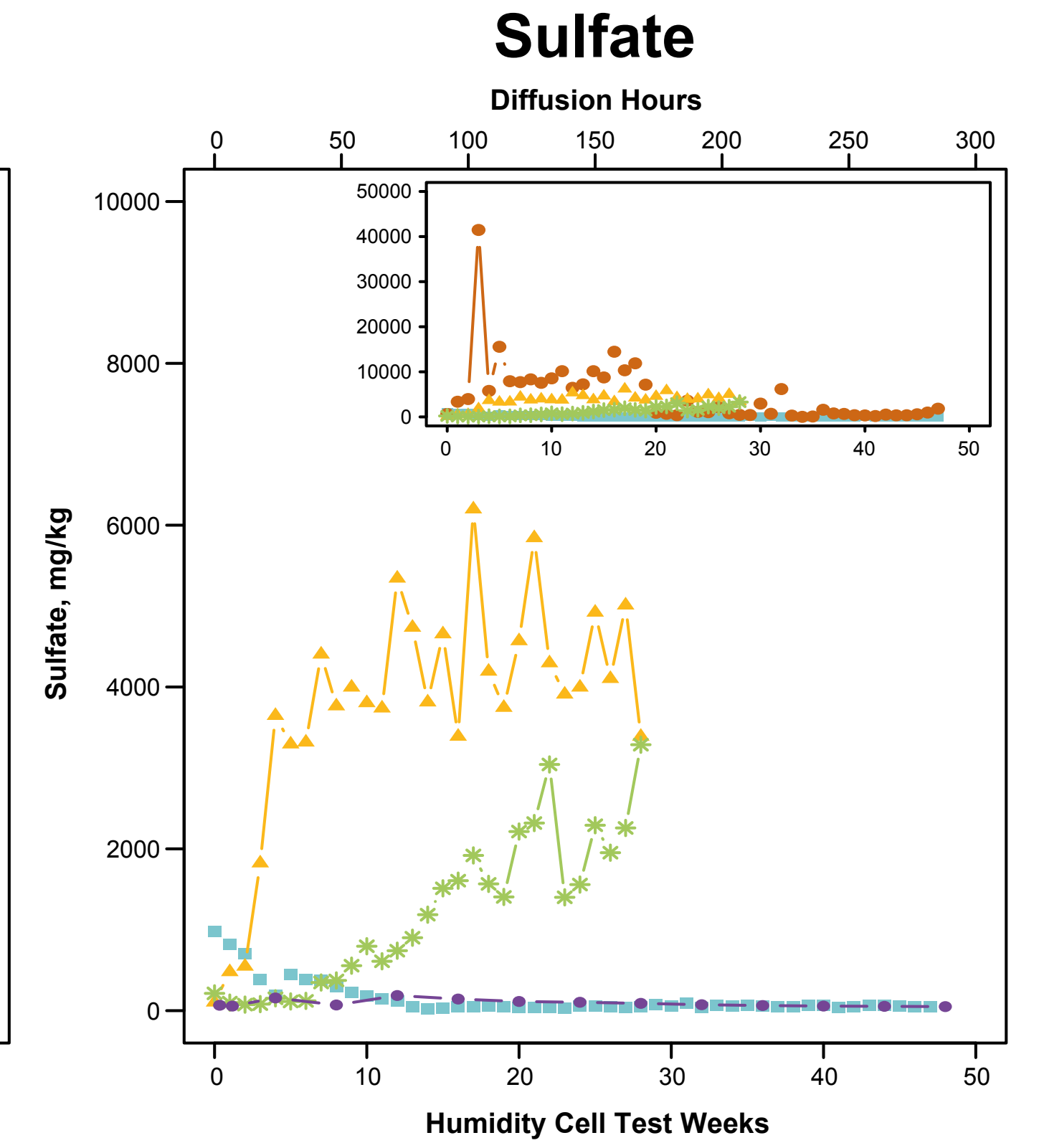
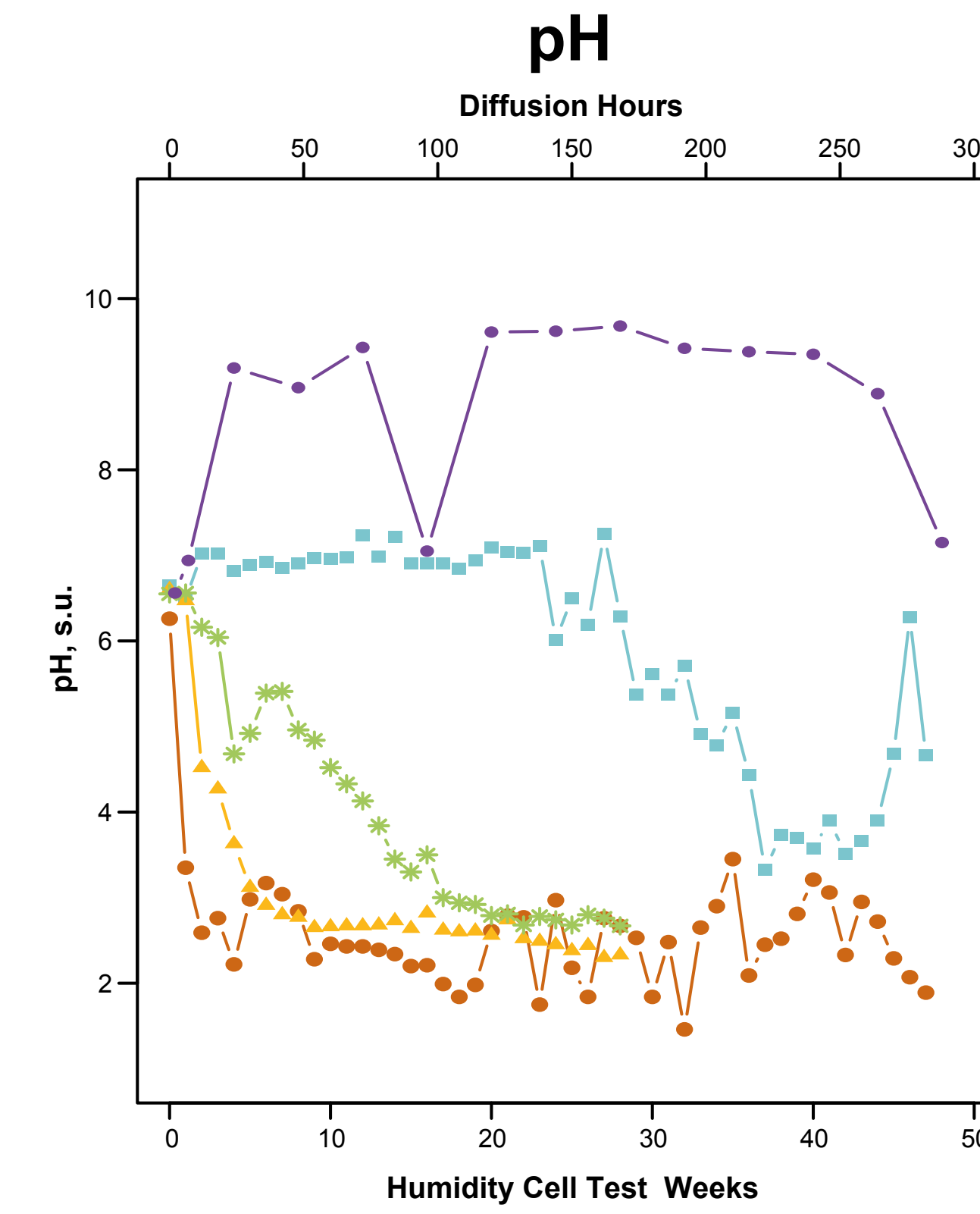
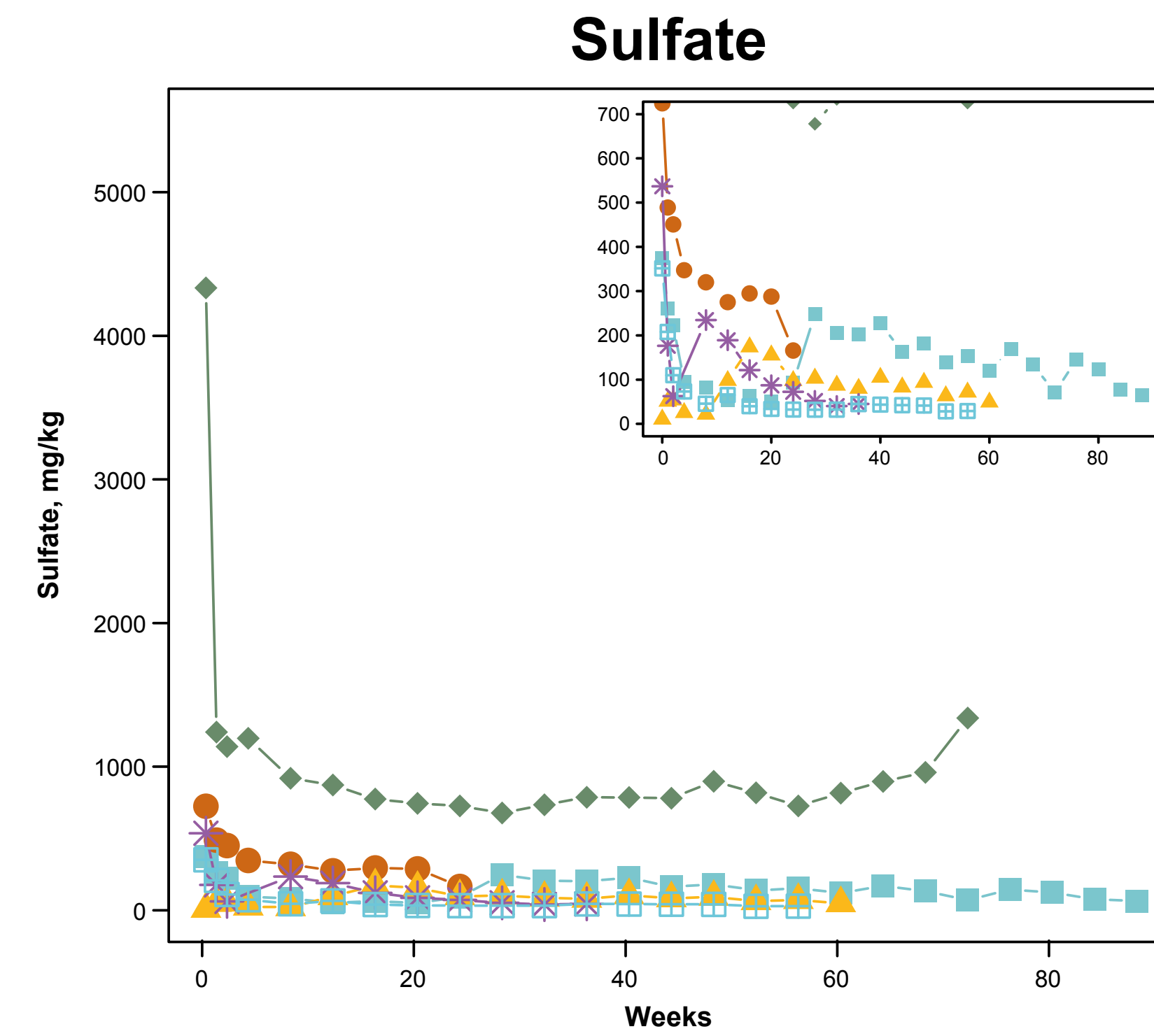
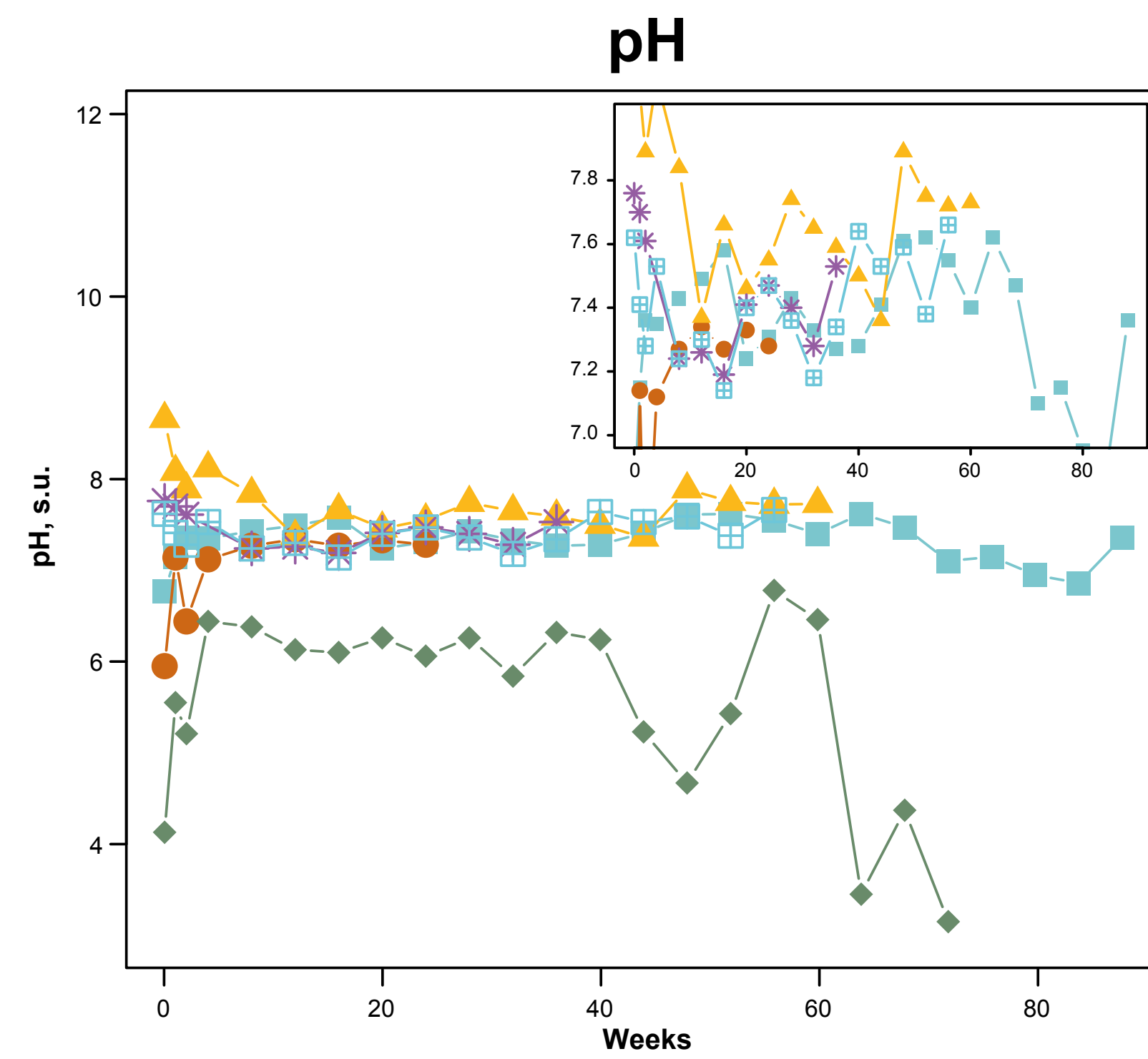


Comparison of Select Parameters for Waste Rock Kinetic Humidity Cells

Kinetic Test Results for Tailings



Note: Some data obscured in insets. All data visible in large figures; test durations varied.

- 2012 Ynl A - Lower Newland A
- 2012 USZ - Upper Sulfide Zone
- ▲ 2012 Ynl B - Lower Newland B
- ◆ 2015 USZ - Upper Sulfide Zone
- ✱ 2015 Ynl B - Lower Newland B
- ◻ 2015 LZ FW - Lower Zone Foot Wall

Note: To facilitate data interpretation, the Unsat. tailings HCT and 2% binders HCT acidity data are only presented in the inset with the expanded view of the y-axis. Diffusion Hours on upper x-axis only relate to 4% Diffusion test data in purple. All other data relate to the lower x-axis (Weeks).

- Saturated Tailings Humidity Cell Tests
- ▲ Unsaturated Tailings Humidity Cell Tests
- 2% Binders Humidity Cell Tests
- ✱ 4% Binders Humidity Cell Tests
- 4% Binders Diffusion