

# Montana Pole & Treating Plant

October 2014

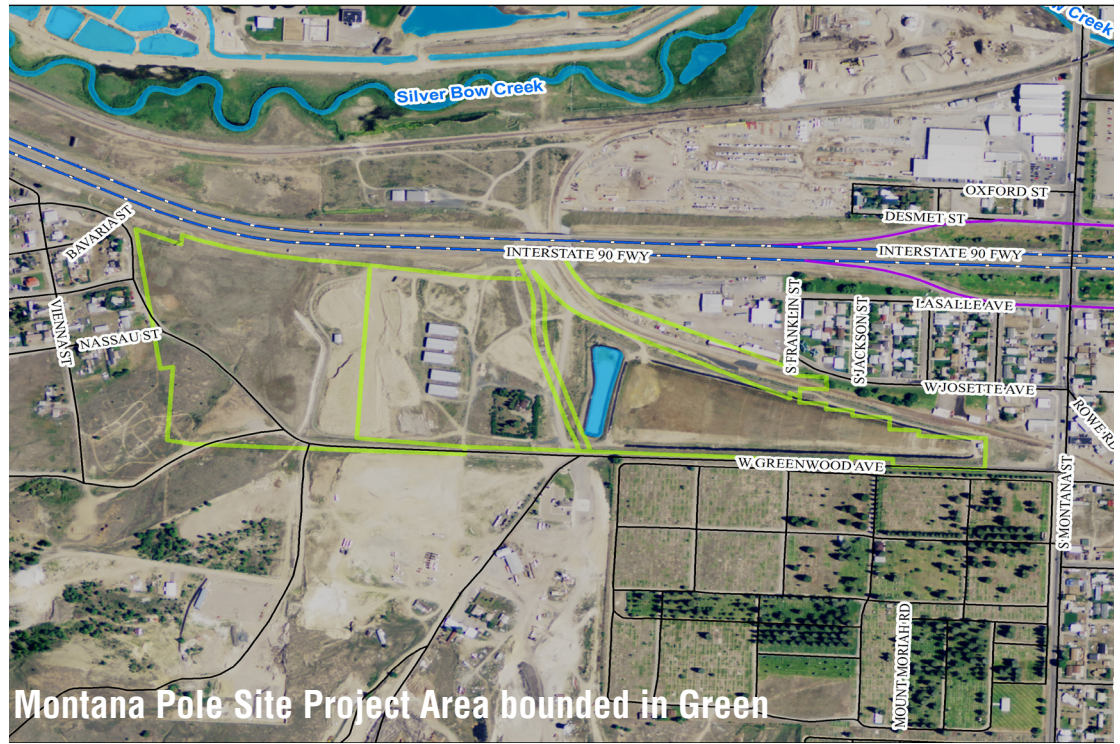
The time has come to make a decision about the Montana Pole & Treatment Site's future use. Montana Department of Environmental Quality (MDEQ) has informed Butte-Silver Bow (BSB) staff that final remedial action steps are being designed for the Montana Pole & Treating Plant Site, with construction slated for 2015-16. Four alternatives have been proposed and community input is needed. Your participation in one of four public meetings is welcome.

## Project Background

The roughly 85-acre Montana Pole Site is located South of Interstate 90 and the Boulevard Neighborhood, North of Greenwood Avenue, West of Montana Street, and East of the Williamsburg neighborhood. This area was formerly a post and pole treatment plant.

In 1995, Butte-Silver Bow prepared the initial land use plan for the Site. At that time, the plan emphasized the Site's suitability to serve as a recreational area and also support commercial/industrial uses from Greenwood Avenue to the Interstate right-of-way. Over the years, as certain land uses have been implemented in other areas of the community, new land use proposals have emerged.

The historic and present uses in the general vicinity of the Site are typical of the commercial/industrial zoning, including the post and pole treatment operation, and more recently, excavation and paving contractor yards, asphalt production, materials storage and hauling, construction and fabrication, as well as the nearly 20-year environmental cleanup.



Montana Pole Site Project Area bounded in Green

## Workshop Objectives

- Discuss proposed uses for the site;
- Participate in preliminary conceptual planning exercises;
- Provide constructive feedback to MDEQ regarding the site's final remedy.

## Workshop Schedule

- Wednesday, October 29th - Noon - Butte Archives
- Wednesday, October 29th - 6 p.m. - Butte Archives
- Thursday, October 30th - Noon - Civic Center, Foyer
- Thursday, October 30th - 6 p.m. - Butte Fire Training Center, 350 Josette Ave

For Questions: Please call Julia Crain at 497-6264 or email: [jcrain@bsb.mt.gov](mailto:jcrain@bsb.mt.gov)

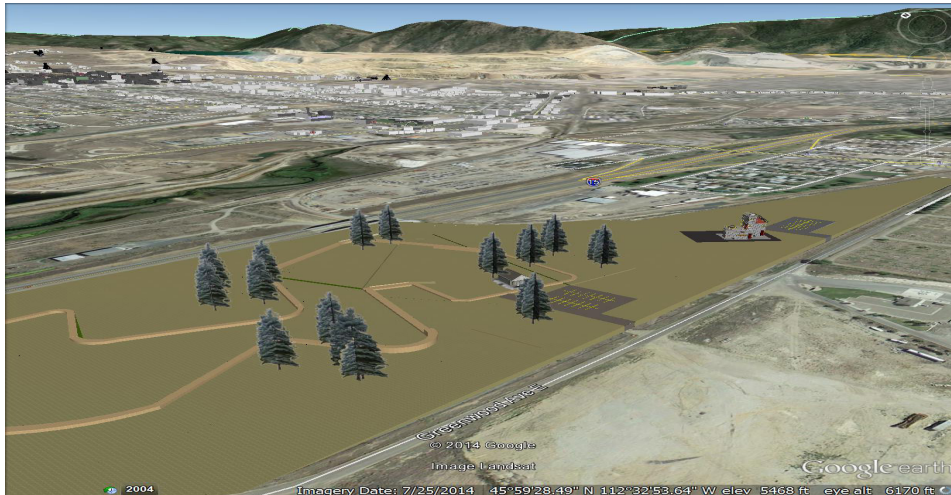




## Land Use & Remedy at the Montana Pole & Treating Plant

# Proposed Alternatives

Illustrations are not to scale, and should be considered for reference use only.



Recreation/Open Space/Trail head access to Silver Bow Creek Greenway and Blacktail Creek Trail.



BSB rock crusher and asphalt facility, moved from its current location on Montana Street, and with reserved space on the east end of the Site for park/recreational use such as a Fire Training Center or Fair Grounds.



BSB county shops, moved from current locations at Civic Center Road and from the Kelley Warehouse, again, with reserved space on the east end for open space/ recreational use.



Relocate the County Shop facilities and the asphalt plant on the Site, reserve space for the fire training facility, and provide an open space buffer between the adjacent residential neighborhoods.