

# PEST CONTROL IN THE SCHOOL ENVIRONMENT

---

## Implementing Integrated Pest Management (IPM)





Rodents



Bed bugs



Wasps



Ants



Cockroaches



Mosquitoes



Pesticides



Flies

# TROUBLE WITH DISINFECTING WIPES...

- ▶ While cleaning removes germs from a surface, disinfecting kills them by using antimicrobial pesticides
- ▶ Disinfectant chemicals trigger asthma, allergies and other health concerns

# COLORADO INCIDENT

- ▶ **Complaint from parent about daughter having health issues after long term exposure to antimicrobial products (specifically Clorox wipes)**
- ▶ **Why? Due to Colorado Department of Public Health and Environment's regulations; work space and equipment are required to be sanitized**
- ▶ **The school confirmed implementation policy to have children wipe down desks and other items after each class**

# COLORADO INCIDENT

- ▶ Labeling Directions
  - ▶ Keep Out of Reach of Children
  - ▶ Directions require the user to wash hands after use



# COMMUNICATE...EDUCATE...

- ▶ **EPA Region 8: School IPM Coordinator, Clyde Wilson**
  - ▶ **Confirmed that school district was in the Colorado School IPM program**
  - ▶ **Not the first instance of antimicrobial exposure: Boulder County Schools**

## ▶ Colorado Department of Public Health and Environment's Child Care in Schools Program Coordinator...

- ▶ ***"The Rules and Regulations Governing Schools in Colorado requires commonly touched surfaces to be sanitized weekly and whenever visibly soiled. These surfaces include but are not limited to desks, tables, keyboards, computer mice. Personal items such as protective eye wear and headphones need to be sanitized between users. Any product used must be intended for the surface it is applied to and all labeled instructions must be followed."***

# COMMUNICATE...EDUCATE...

- ▶ **All agencies reached out to the school district and started a dialogue with the Principle, Superintendent and facility managers**
  - ▶ **Explained label requirements**
  - ▶ **Clarified and made recommendations to meet CDPHE requirements**



# ACTION ITEMS...

- ▶ EPA Region 8 prepared a statement for future inquiries on the use of Clorox wipes in school environments
- ▶ CDA provided an article for the Colorado School IPM Newsletter
- ▶ NPIC information on antimicrobial use was provided to schools
- ▶ ASPCRO School IPM Committee will be developing a fact sheet that all states can use as a communication tool.



# CHANGES...

- ▶ **Districts in the Colorado Springs changed their policies regarding the use of antimicrobial products**
- ▶ **District 51 in Grand Junction started baseline assessments to begin a verifiable School IPM program**
  - ▶ **The classrooms were loaded with boxes of Clorox wipes that the school requested as part of the back-to-school supply list from parents**
  - ▶ **District immediately advised administrative staff that Clorox wipes were not to be used by students**



# BE AWARE...

- ▶ **Health Department school sanitation policies in states**
  - ▶ **Necessary to help prevent the spread of germs, etc.**
- ▶ **This is a standard operating procedure in most schools**



ALWAYS WATCHING OUT FOR YOU

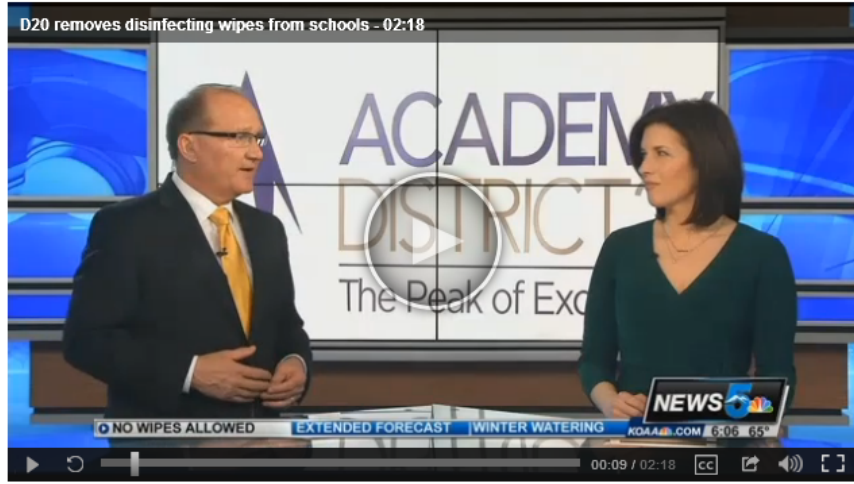
Contact KOAA | Have a News Tip? | News Team

NEWS WEATHER SPORTS COMMUNITY PHOTOS VIDEOS ON KOAA

Recommend 9.8K 136

# D20 removes disinfecting wipes from schools

Posted: Mar 09, 2017 5:38 PM MST  
Updated: Mar 09, 2017 5:38 PM MST



COLORADO SPRINGS - News5 has learned that Academy School District 20 in Colorado Springs has stopped using any form of disinfecting wipes in schools. We heard from multiple concerned parents, so we asked D20 what caused the change in policy.

The district says they've had discussions with the local health department about the effectiveness of the wipes as early as January. News5 found out they pulled the wipes from schools after a parent filed a complaint with the Department of Agriculture, and the district was subsequently contacted by the EPA.



According to the EPA, a specialist shared technical assistance and information about best practices to reduce risks associated with the use of disinfectants in schools. The wipes are meant to be used on surfaces, so they fall into a category regulated by the EPA called microbial pesticide products. As a registered pesticide, they must be used according to label instructions.

## WEATHER

Colorado Springs Save Location  
78° 85°↑ 58°↓  
Feels like: 78°  
29%  
Drive the Doppler

More Weather

## FEATURED VIDEO

Local doctors suggest alternatives to ...

Pueblo smoke shop criticized over falsely...

# ESTABLISHING A IPM PROGRAM IN SCHOOLS

**Step 1:**

**Develop an IPM policy supporting a safe, clean and healthy environment for students and staff by implementing reduced-risk methods to limit pest problems**

- ▶ **Eliminate calendar-based application of pesticides**
- ▶ **Focus on preventing pest infestations through sanitation and pest exclusion**



# ESTABLISHING A IPM PROGRAM IN SCHOOLS

**Step 2:**

**Designate pest management roles for everyone:**

- ▶ **Students**
- ▶ **Teachers**
- ▶ **School staff & leaders**

**IPM Committee \* IPM Coordinator \* School Nurses**

- ▶ **Ensure effective communication**
- ▶ **Educate each group on respective roles**

# ESTABLISHING A IPM PROGRAM IN SCHOOLS

**Step 3:**

**Set pest management objectives for specific activities and locations in the school. (classroom, cafeteria, sports field, etc.)**

- ▶ **The types of pests and ways to manage them in each location should be outlined in the IPM plan.**



# ESTABLISHING A IPM PROGRAM IN SCHOOLS

**Step 4:**

**Inspect site(s) to identify and estimate the extent of pest problems**

- ▶ **Actively monitor vulnerable areas for pests and pest conducive conditions**

**Food Prep/Serving Areas \* Classrooms/Offices \*  
Areas with Plumbing \* Maintenance Areas \* Waste  
Receptacles \* Playgrounds \* Athletic Fields**

▶ **Document and report pest activity and any contributing conditions**



# ESTABLISHING A IPM PROGRAM IN SCHOOLS

## Step 5:

**Implement pest prevention strategies as part of daily activities**

- ▶ **Repairing structures,**
- ▶ **Improving sanitation & waste management practices**
- ▶ **Landscape designs that deter pests, select pest-resistant plant varieties, altering watering and mowing practices**
- ▶ **staff to report problems, and judicious use of pesticides by**



# ESTABLISHING A IPM PROGRAM IN SCHOOLS

## Step 6:

**Keep records of pest management and associated activities**

- ▶ **Evaluate results, activities, and processes to determine if pest management goals and objectives are being met**



# ESTABLISHING A IPM PROGRAM IN SCHOOLS

## Applying Pesticides

**Judicious use of pesticides**

- ▶ **Pests that pose significant risk to human health and safety, structural integrity, or economic loss should be controlled immediately**
- ▶ **The use of pesticides should only applied by certified pesticide applicators that are knowledgeable in IPM**
- ▶ **Students and staff should be notified 24-48 hours in advance**



Quick the Students are Coming...Get Your IPM Training Done - Message (HTML)

**File** Message Adobe PDF

Ignore X Delete Reply Reply All Forward Meeting IM More To Manager Team E-mail Done Move OneNote Assign Policy Mark Unread Categorize Follow Up Translate Find Related Select Zoom

Follow up. If there are problems with how this message is displayed, click here to view it in a web browser.


From:  EPA Integrated Pest Management Network <oppt.epa@public.govdelivery.com> Sent: Tue 8/22/2017 8:06 AM  
 To:  Johns, Linda  
 Cc:  
 Subject: Quick the Students are Coming...Get Your IPM Training Done

**New on-Demand School Integrated Pest Management Videos Now Available**

School may be out; however, your education never stops. Access EPA's [new on-demand webinar series](#) about a variety of integrated pest management (IPM) topics. You can increase your knowledge about IPM before your students come back from summer break. Help make their environments (and yours) pest free using IPM strategies. Learn about pest management strategies you can implement now.

**Let the Binge Watching Begin!**


<b>Webinar Topic</b>	<a href="#">Watch On-Demand!</a>
Yellow Jackets & Wasps	<a href="#">Watch On-Demand!</a>
Bed Bugs	<a href="#">Watch On-Demand!</a>
Weed Control	<a href="#">Watch On-Demand!</a>
Ticks	<a href="#">Watch On-Demand!</a>
Rodents	<a href="#">Watch On-Demand!</a>
Developing an IPM Plan	<a href="#">Watch On-Demand!</a>
Bats	<a href="#">Watch On-Demand!</a>
Mosquitos & Zika Virus	<a href="#">Watch On-Demand!</a>
Lice	<a href="#">Watch On-Demand!</a>

 You can unsubscribe or update your subscriptions or e-mail : need is your e-mail address. If you have any questions or pro





https://www.epa.gov/managing-pests-schools/pest-control-school-environment Pest Control in the School E...

File Edit View Favorites Tools Help

Tulane Learning Manage...

 United States Environmental Protection Agency

Environmental Topics Laws & Regulations About EPA Search EPA.gov

Related Topics: [Managing Pests in Schools](#) CONTACT US SHARE    


## Pest Control in the School Environment

This booklet introduces and reacquaints readers with effective IPM. It presents recommendations for best management practices for IPM in schools. Throughout the nation, schools that have adopted IPM report long term, sustainable pest mitigation that both reduces the use of pesticides and is cost effective.

You may need Adobe Reader to view files on this page. See EPA's [About PDF page](#) to learn more.

- [Pest Control Management in School Environments 735-F-17-004 \(PDF\)](#)  
 (28 pp, 2 MB, May 2017, 735-F-17-004)  
 Learn about effective IPM strategies that can serve as best practices in your schools' pest management program implementation.

[Contact Us](#) to ask a question, provide feedback, or report a problem.

	<b>Discover.</b>	<b>Connect.</b>	<b>Ask.</b>
	Accessibility	Data.gov	Contact Us
	EPA Administrator	Inspector General	Hotlines
	Budget & Performance	Jobs	FOIA Requests
	Contracting	Newsroom	Frequent Questions
	Grants	Open Government	

