



StreamStats

SEASONAL LOW FLOW 14Q5 FOR TRIGGER VALUE

https://streamstats.usgs.gov/ss/

- ▶ This is the StreamStats landing page.
- ▶ You can search by address, latitude and longitude, etc.

Enter your location here.

StreamStats - Internet Explorer provided by MT DEQ

https://streamstats.usgs.gov/ss/

USGS StreamStats

Report About Help

SELECT A STATE / REGION

Exploration Tools

Step 1: Use the map or the search tool to identify an area of interest. At zoom level 8 or greater State/Region selection will be enabled.

Search for a place

Help

IDENTIFY A STUDY AREA

SELECT SCENARIOS

BUILD A REPORT

POWERED BY WIM

USGS Home Contact USGS Search USGS Accessibility FOIA Privacy Policy & Notices

Zoom Level: 4
Map Scale: 1:36,978,596
Lat: 51.7619, Lon: -152.8339

500 km
500 mi

Layers

Base Maps

National Layers

Leaflet | Esri

110%

SELECT A STATE / REGION >

Step 2: You have zoomed in sufficiently to select a state or regional study area. Your selection will dictate the data used to perform basin delineation and flow statistics calculation.

Click to select a State or Regional Study Area

Montana

Search for a place

Help

IDENTIFY A STUDY AREA >

SELECT SCENARIOS >

BUILD A REPORT >

POWERED BY WIM

[USGS Home](#) [Contact USGS](#) [Search USGS](#)
[Accessibility](#) [FOIA](#) [Privacy](#) [Policy & Notices](#)

Exploration Tools



Label: 1210 L St, Bozeman, Montana, 59715 (Gallatin County, MT)
ElevFt: N/A
Lat: 45.69470031493506
Lon: -111.01985327757018
Source: ESRI:World

Layers

Base Maps

National Layers

Select "Montana"

Zoom Level: 16
Map Scale: 1:9,027
Lat: 45.6980, Lon: -111.0308

100 m
500 ft

SELECT A STATE / REGION
Montana

IDENTIFY A STUDY AREA

Step 2: Click the 'Delineate' button to activate the delineation tool

Delineate

SELECT SCENARIOS

BUILD A REPORT

ORDERED BY WIM

USGS Search USGS
Policy & Notices

Exploration
Tools



Zoom Level: 16
Map Scale: 1:9,027
Lat: 45.6947, Lon: -111.0308

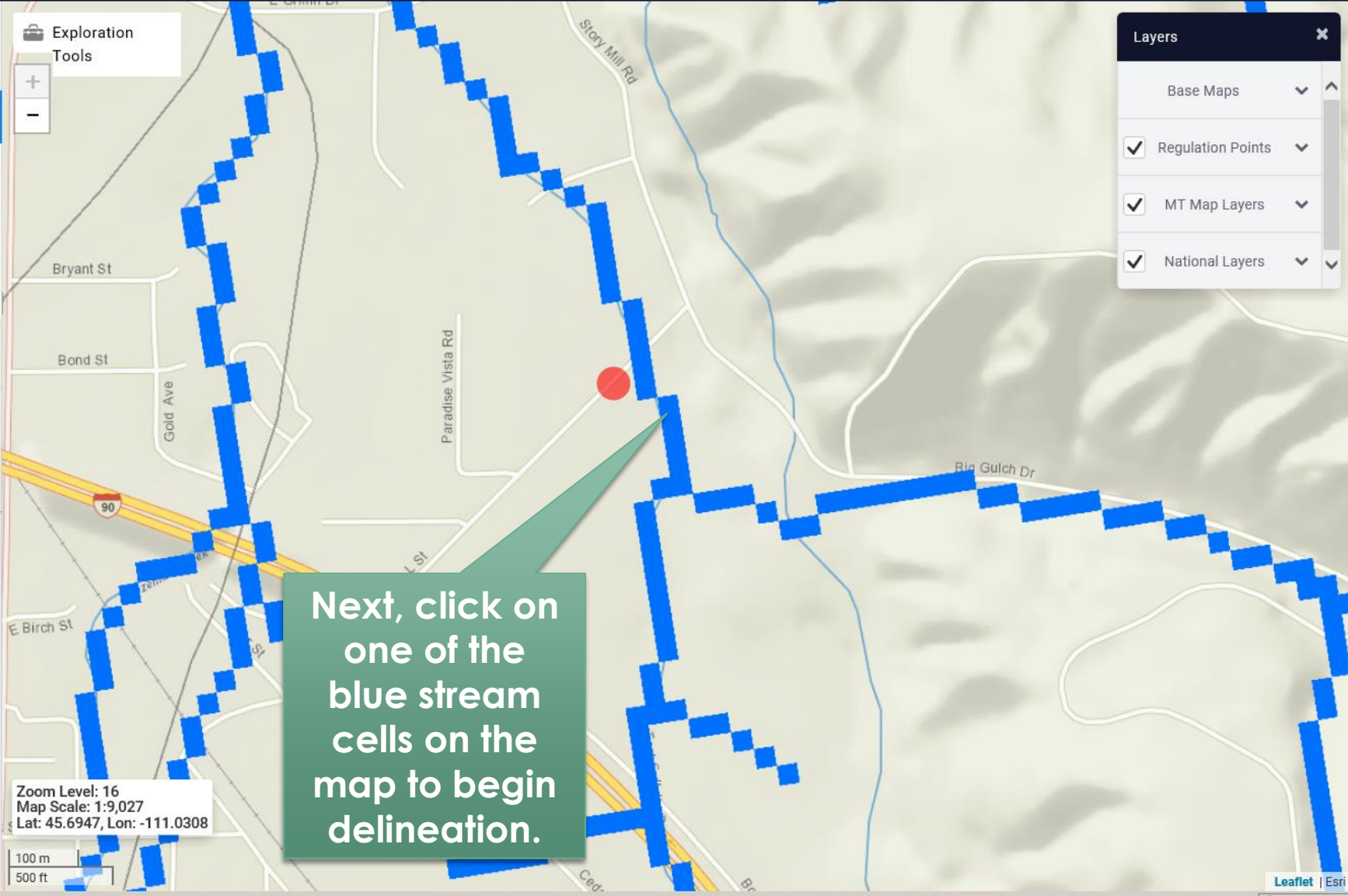
100 m
500 ft

Layers

- Base Maps
- Regulation Points
- MT Map Layers
- National Layers

Click the "Delineate" button to activate delineation.

Next, click on one of the blue stream cells on the map to begin delineation.



SELECT A STATE / REGION
Montana

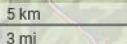
IDENTIFY A STUDY AREA
Basin Delineated

Step 5: Your delineation is complete. You can now clear, edit, or download your basin, or choose a state or regional study specific function (if available). Click **continue** when you are ready.

Exploration Tools



Zoom Level: 11
Map Scale: 1:288,895
Lat: 45.5401, Lon: -111.2901



This is the point of interest.

Layers

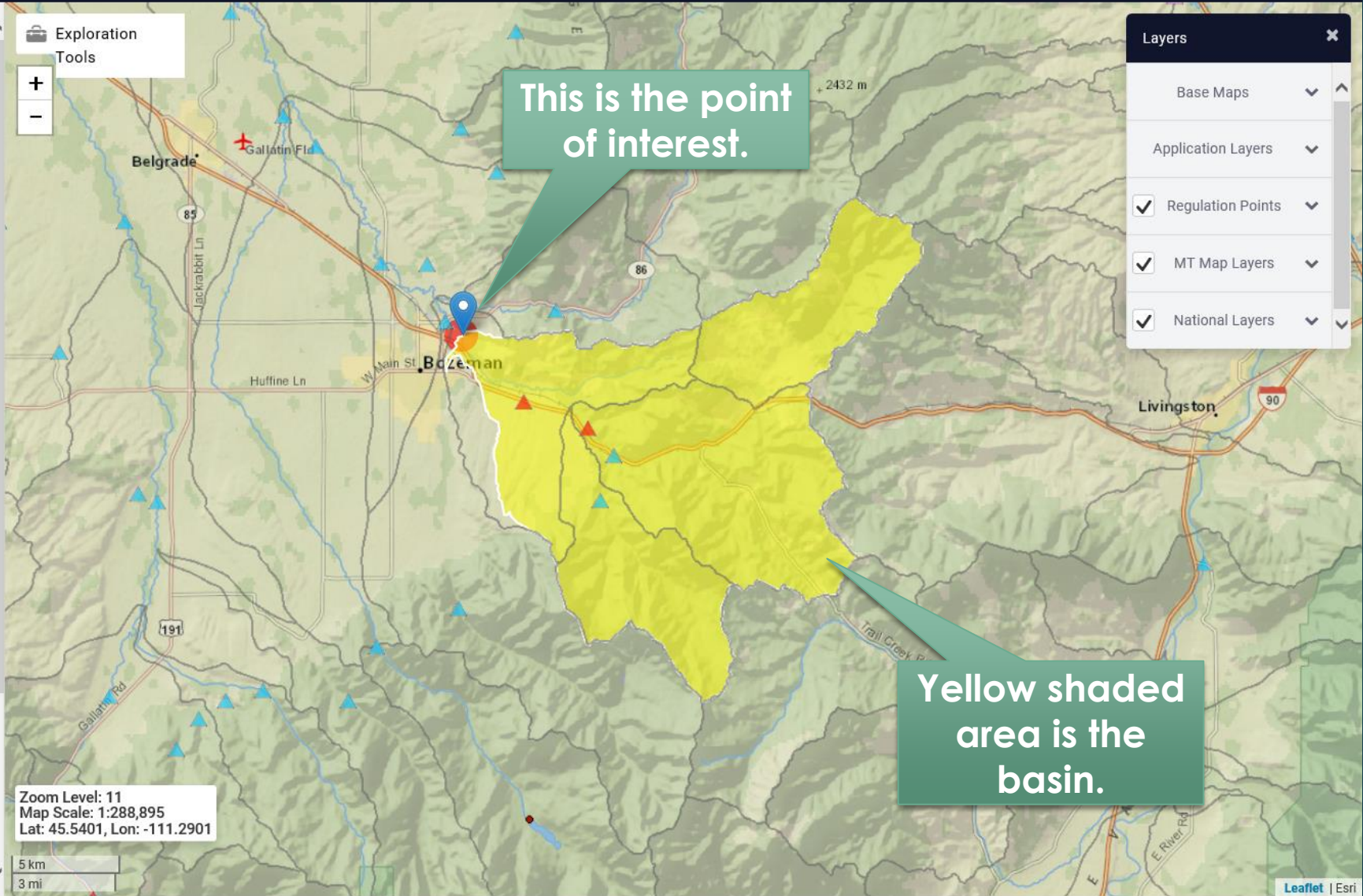
- Base Maps
- Application Layers
- Regulation Points
- MT Map Layers
- National Layers

Click the "Continue" button to activate delineation.

Buttons for Basin Delineation:

- Download Basin
- Download Basin
- Download Basin
- Download Basin
- Download Basin
- Continue

Yellow shaded area is the basin.



SELECT A STATE / REGION

Montana

IDENTIFY A STUDY AREA

Basin Delineated

SELECT SCENARIOS

Step 1: Select a scenario below, or expand the "Basin Characteristics" panel to select specific basin characteristics.

Regression Based Scenarios

Peak-Flow Statistics

Low-Flow Statistics

Seasonal Flow Statistics

Flow-Duration Statistics

Annual Flow Statistics

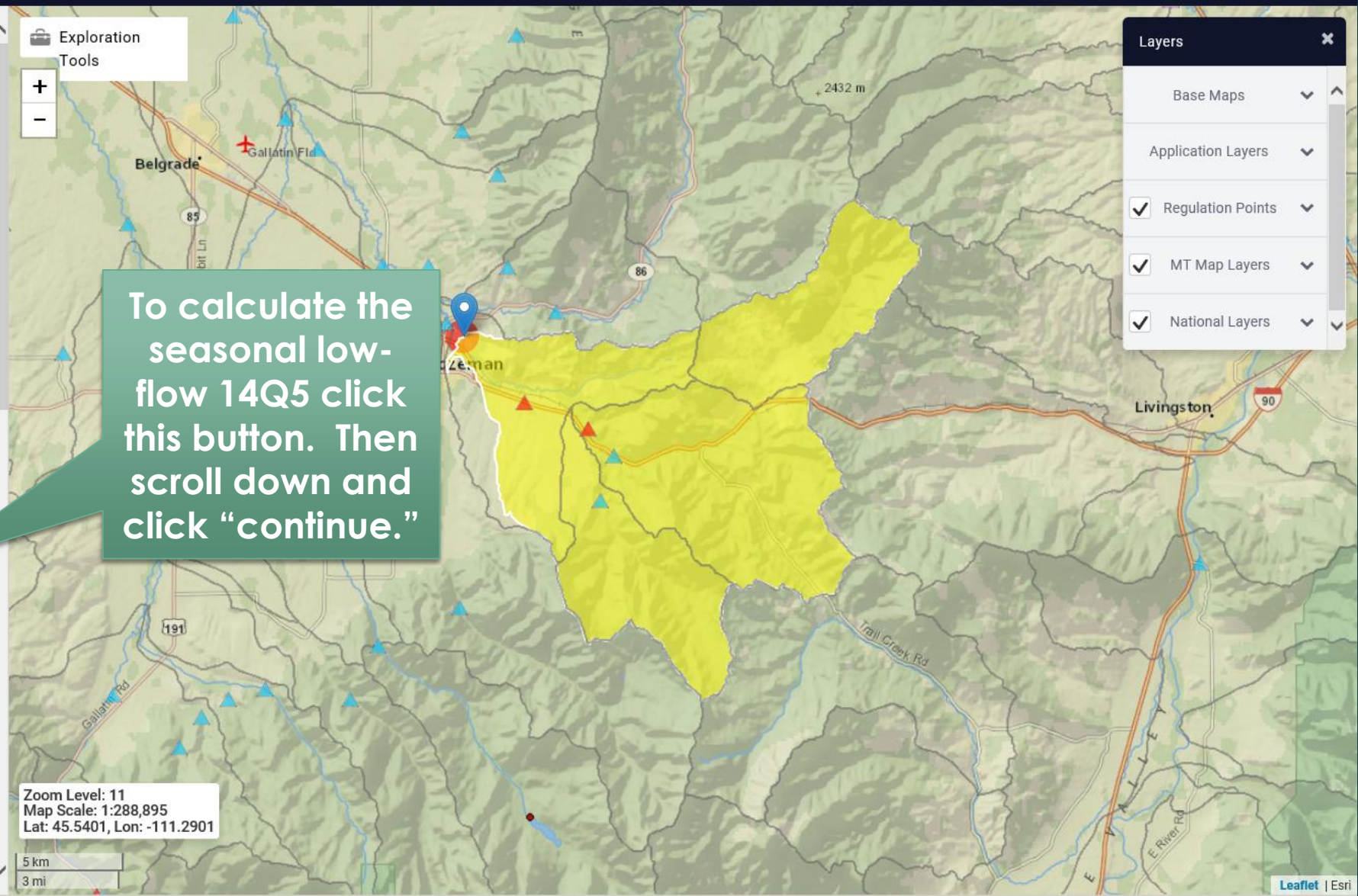
November Flow-Duration Statistics

Monthly Flow Statistics

December Flow-Duration Statistics

January Flow-Duration Statistics

Exploration Tools



To calculate the seasonal low-flow 14Q5 click this button. Then scroll down and click "continue."

Zoom Level: 11
Map Scale: 1:288,895
Lat: 45.5401, Lon: -111.2901

5 km
3 mi

Layers

- Base Maps
- Application Layers
- Regulation Points
- MT Map Layers
- National Layers

Montana

IDENTIFY A STUDY AREA
Basin Delineated

SELECT SCENARIOS

BUILD A REPORT

Step 1: You can modify computed basin characteristics here, then select the types of reports you wish to generate. Then click the "Build Report" button

Show Basin Characteristics

Select available reports to display:

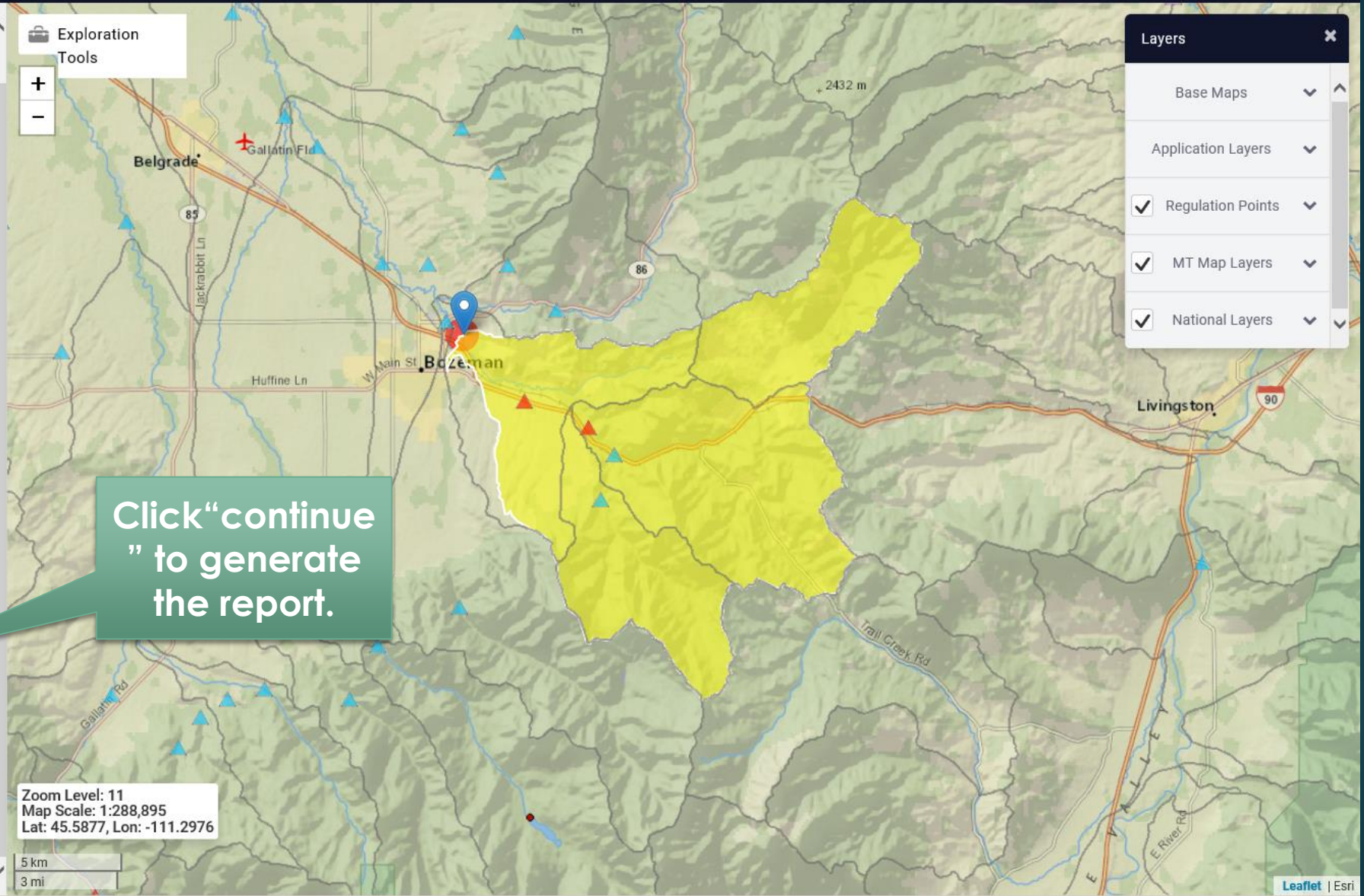
- Basin Characteristics Report
- Scenario Flow Reports

Continue

POWERED BY WIM

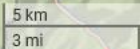
USGS Home Contact USGS Search USGS
Accessibility FOIA Privacy Policy & Notices

Exploration Tools



Click "continue" to generate the report.

Zoom Level: 11
Map Scale: 1:288,895
Lat: 45.5877, Lon: -111.2976



Layers

- Base Maps
- Application Layers
- Regulation Points
- MT Map Layers
- National Layers

5 km
3 mi

Leaflet | Esri

110%

USGS StreamStats

Montana

IDENTIFY A STUDY AREA
Basin Delineated

SELECT SCENARIOS

BUILD A REPORT Report Built

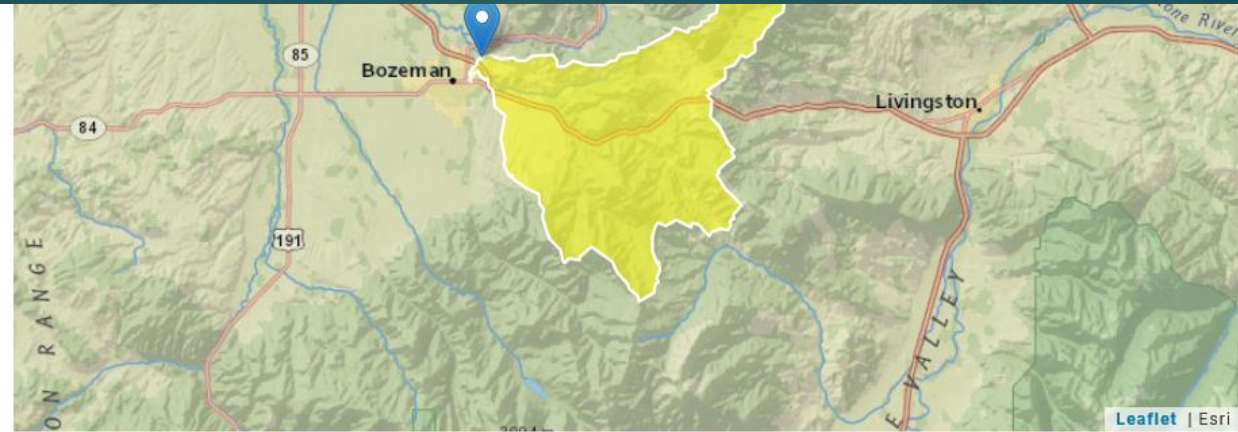
Scroll down through the report to the "Seasonal Flow Statistics."

Select available reports to display:

- Basin Characteristics Report
- Scenario Flow Reports

Continue

Accessibility Policy & Notices



Basin Characteristics

Parameter Code	Parameter Description	Value	Unit
CONTDA	Area that contributes flow to a point on a stream	93.8	square miles
PRECIP	Mean Annual Precipitation	26.12	inches

Seasonal Flow Statistics Parameters [UpYellow CentMt Region LowFlow GLS 2015 5019G]

Parameter Code	Parameter Name	Value	Units	Min Limit	Max Limit
CONTDA	Contributing Drainage Area	93.8	square miles	28.1	200.0
PRECIP	Mean Annual Precipitation	26.12	inches	16.4	30.0

Seasonal Flow Statistics Flow Report [UpYellow CentMt Region LowFlow GLS 2015 5019G]

Pll: Prediction Interval-Lower, Plu: Prediction Interval-Upper, SEp: Standard Error of Prediction, SE: Standard Error (other -- see report)

Statistic	Value	Unit	Pll	Plu	SEp
Jul_to_Oct_14_Day_5_Yr_Low_Flow	11.3	ft ³ /s	2.11	60.1	135

Report About Help

Layers

- Base Maps
- Application Layers
- Regulation Points
- MT Map Layers
- National Layers

An option to print is at the bottom of the report.

This is the Seasonal 14Q5. For this site, it's 11.3 cfs. Plug this value into Appendix Q of the Non-Deg Manual.