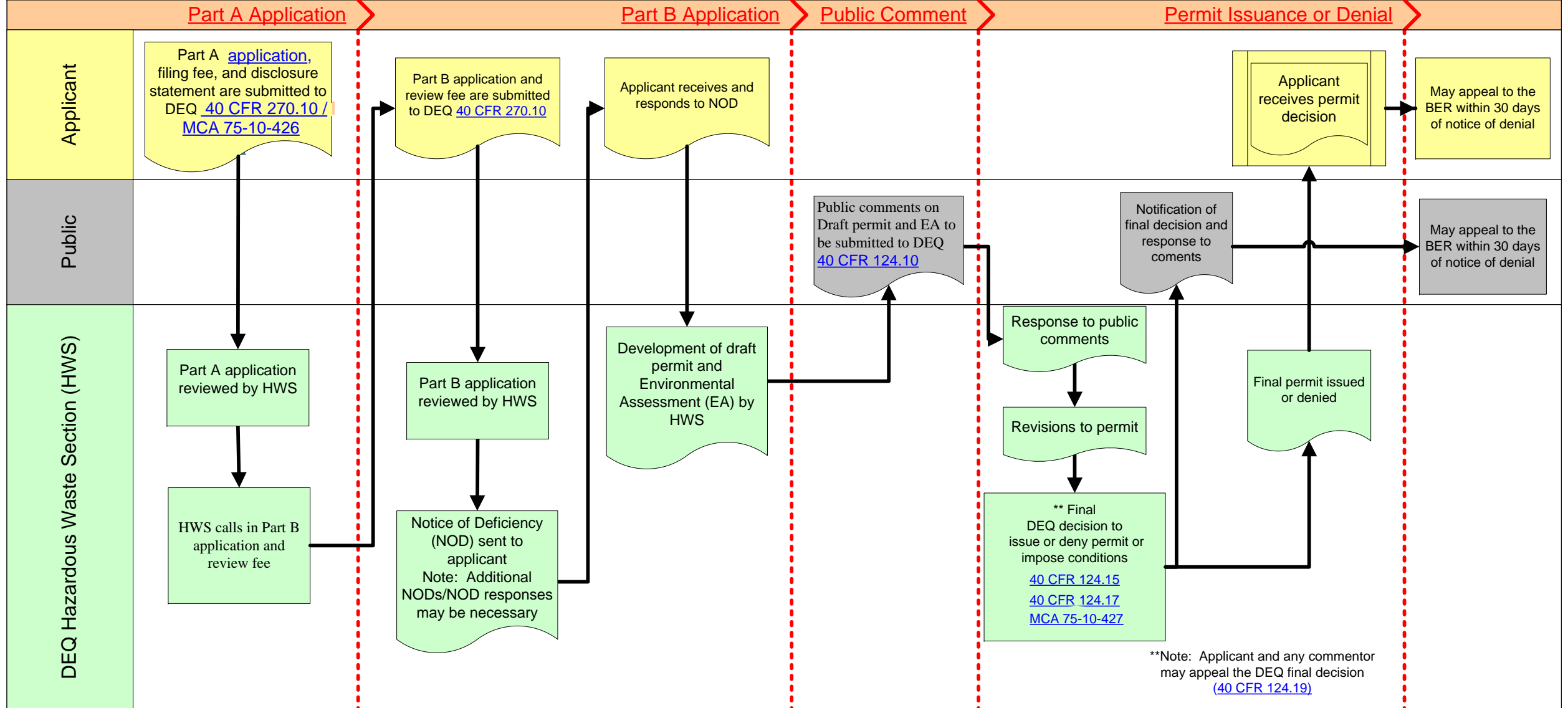


DEQ Hazardous Waste Section New Permitted Facility Permit Process

[40 CFR 270.10](#)



40 CFR Parts 270 and 124 are incorporated by reference at [ARM 17.53.1201 and 17.53.1202](#)

Part A consists of EPA Form 8700-23 (includes both the RCRA Subtitle C Site Identification Form and the Hazardous Waste Permit Information Form), along with maps, drawings, and photographs.

Part B contains a detailed, site-specific information such as geologic, hydrologic, and engineering data in narrative form.