

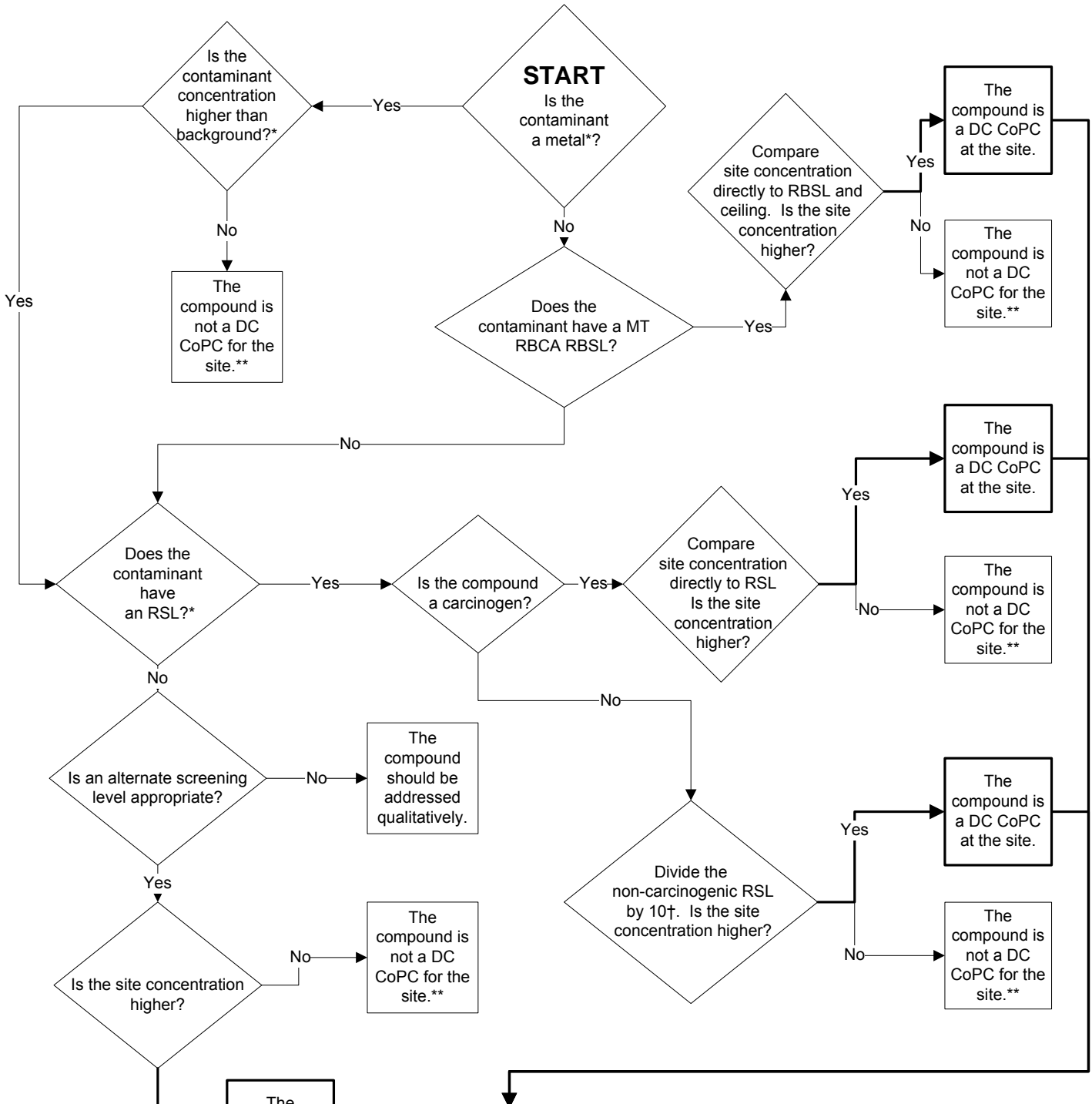
Attachment C - Soil Screening Process – Must Complete Part 1 and Part 2

April 2012

Please check <http://www.deq.mt.gov/StateSuperfund/FrequentlyAskedQuestions.mcp#2> for the most current version

Part 1 - Direct Exposure

Note: For volatile contaminants in soil or groundwater, vapor intrusion must be evaluated separately.



** LEACHING TO GROUNDWATER MUST ALSO BE EVALUATED

* = use 40 mg/kg for arsenic and 400 mg/kg for lead
 † = do not divide the lead RSL by 10, use 400 mg/kg
 RBCA = Risk-based Corrective Action
 RBSL = Most current risk-based screening level
 DC = Direct contact
 CoPC = Contaminant of potential concern
 RSL = Most current EPA Regional screening level
 EPA = Environmental Protection Agency

REFERENCES:

http://www.epa.gov/reg3hwmd/risk/human/rb-concentration_table/index.htm
http://www.deq.mt.gov/statesuperfund/rbca_guide.mcp#2
<http://www.deq.mt.gov/wqinfo/Standards/default.mcp#2>

Attachment C - Soil Screening Process – Must Complete Part 1 and Part 2

April 2012

Please check <http://www.deq.mt.gov/StateSuperfund/FrequentlyAskedQuestions.mcp#2> for the most current version

Part 2 - Leaching to Groundwater

Note: For volatile contaminants in soil or groundwater, vapor intrusion must be evaluated separately.

