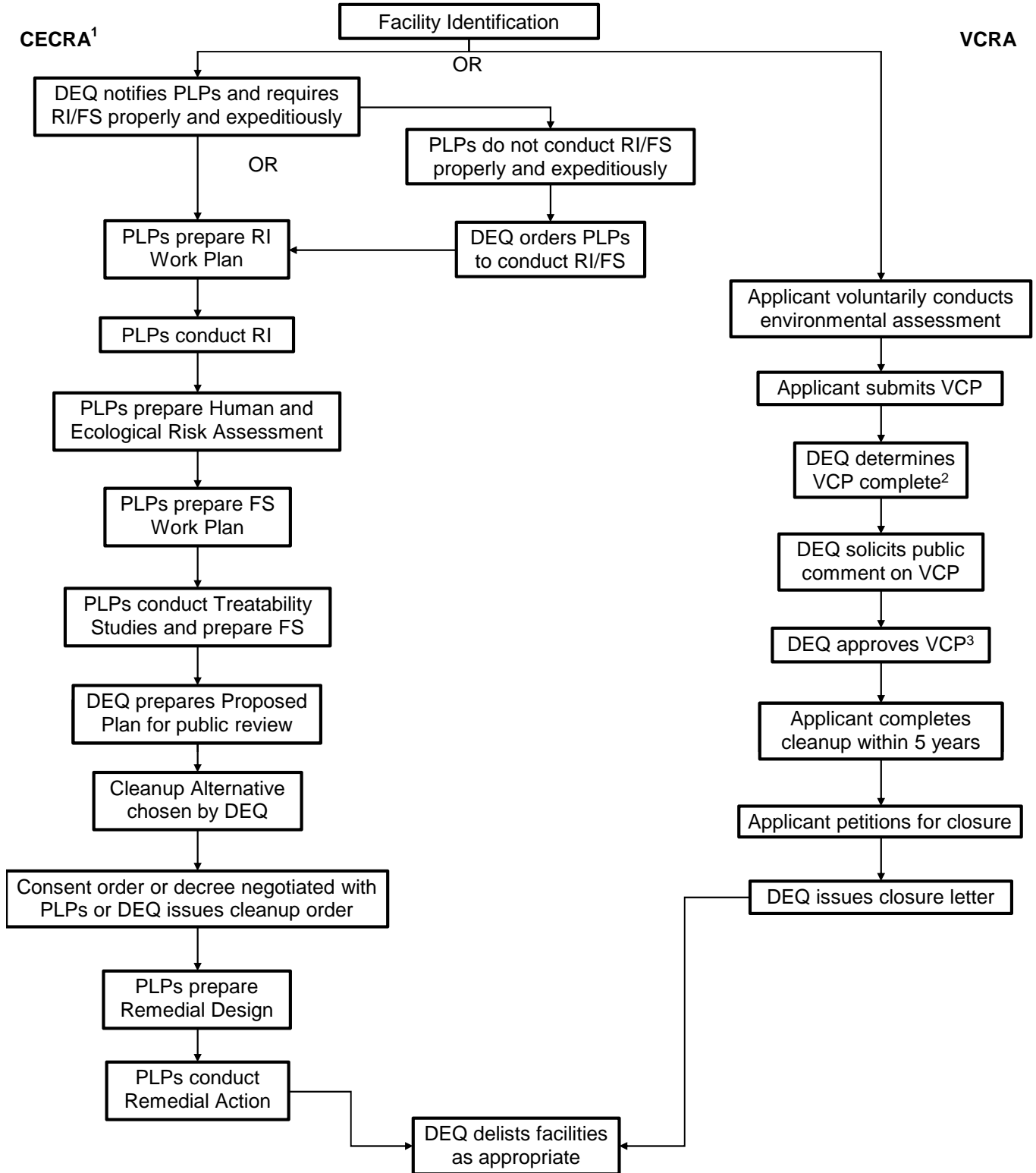


ATTACHMENT 2 THE STATE SUPERFUND PROCESS



¹ Additional public comment may be solicited, interim actions that are consistent with the final remedy may be conducted, and PLPs may petition for allocation under CALA in accordance with § 75-10-745 of the Montana Code Annotated.

² A VCP may require more than one revision to be deemed complete.

³ A PLP with an approved VCP may petition for allocation under CALA.

CECRA = Montana Comprehensive Environmental Cleanup and Responsibility Act

VCRA = Montana Voluntary Cleanup and Redevelopment Act

CALA = Montana Controlled Allocation of Liability Act

DEQ = Montana Department of Environmental Quality

RI = Remedial Investigation

FS = Feasibility Study

VCP = Voluntary Cleanup Plan

PLP = potentially liable person