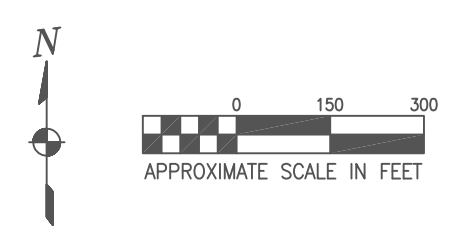


LEGEND

- ESTIMATED AREA WHERE APPARENT LNAPL THICKNESS IS ≥ 1 FOOT
- ESTIMATED AREA WHERE APPARENT LNAPL THICKNESS IS < 1 FOOT
- ESTIMATED EXTENT OF MEASURABLE APPARENT LNAPL THICKNESS
- CW-1-47: NEW CLUSTERED DEEPER SATURATED ZONE MONITORING WELL LOCATION
- HV-75: DEEPER SATURATED ZONE MONITORING WELL LOCATION
- HV-83: NEW SHALLOW MONITORING WELL LOCATION
- HV-25: SHALLOW MONITORING WELL LOCATION
- HV-30: DESTROYED MONITORING WELL LOCATION
- R42: OPERABLE RECOVERY WELL LOCATION
- RECOVERY/INTERCEPTOR TRENCH LOCATION



NOTES:

1) LNAPL DISTRIBUTION BASED ON (a) MONITORING DATA FROM DECEMBER 1999, (b) STRATAPROBE SAMPLING RESULTS FROM APRIL 1995 AND JUNE 1999 AND (c) SOIL BORING OBSERVATIONS FROM AUGUST 1992. 1995 STRATAPROBE AND 1992 SOIL BORING LOCATIONS ARE NOT SHOWN.

BURLINGTON NORTHERN FUELING FACILITY
 HAVRE, MT

LNAPL DISTRIBUTION – DECEMBER 1999
 (EAST)