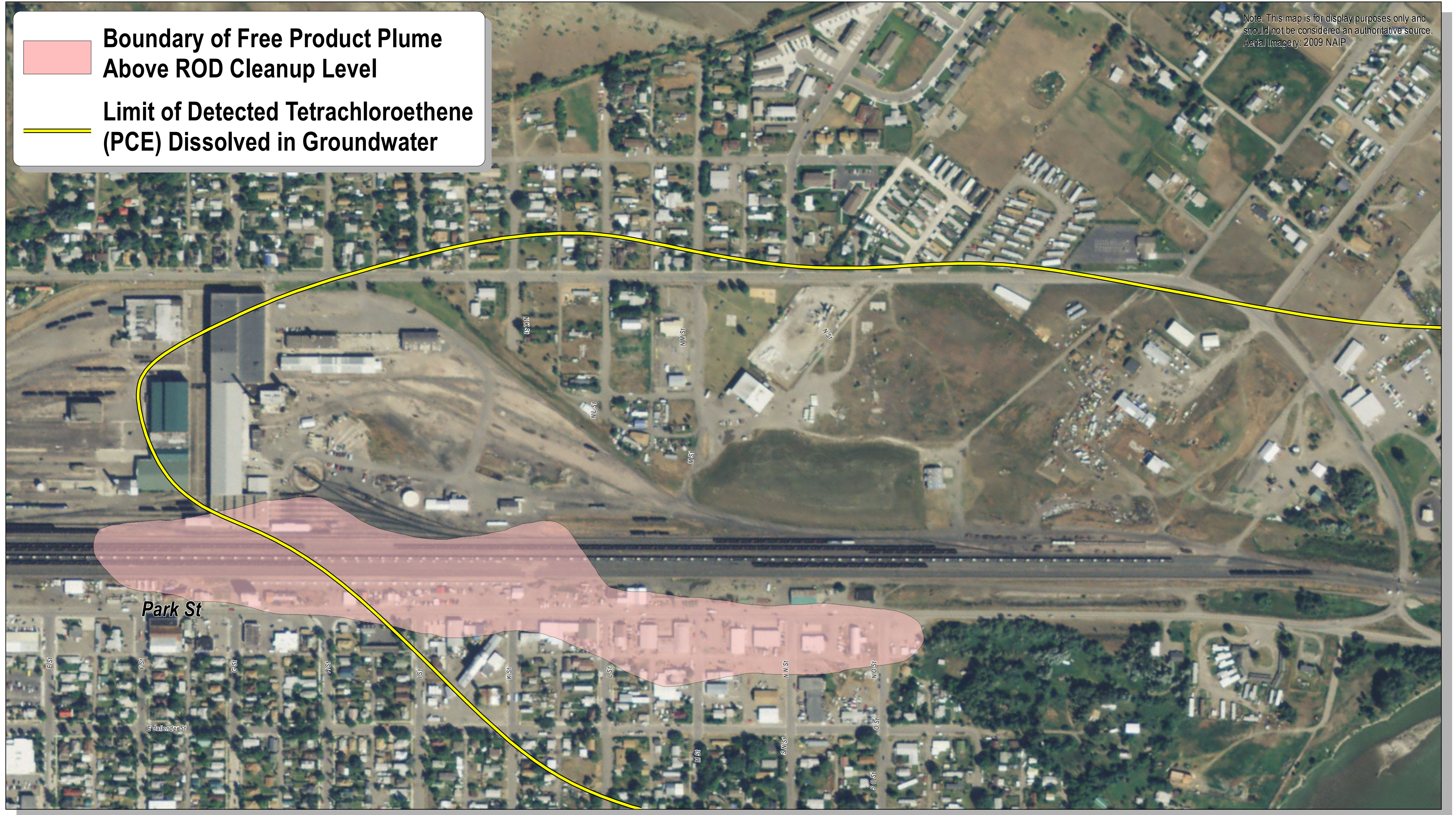


Note: This map is for display purposes only and should not be considered an authoritative source. Aerial Imagery: 2009 NAIP

 **Boundary of Free Product Plume Above ROD Cleanup Level**

 **Limit of Detected Tetrachloroethene (PCE) Dissolved in Groundwater**



Petroleum in Groundwater and Dissolved Tetrachloroethylene (PCE) Plume 2011

Burlington Northern Shop Complex Facility
Livingston, Montana

