

APPENDIX A – FIGURES AND TABLES

LIST OF TABLES

Table A-1. Status of Waterbody Impairments in the Upper Clark Fork Phase 2 TMDL Planning Area based on the 2012 Integrated Report A-3

LIST OF FIGURES

Figure A-1. Location of the Upper Clark Fork Phase 2 TMDL Planning Area A-8

Figure A-2a. Map of Sediment Listed Waterbodies Addressed in this Document A-9

Figure A-2b. Map of Nutrient Listed Waterbodies Addressed in this Document A-10

Figure A-3. Map of the Level IV Ecoregions Found in the Upper Clark Fork Phase 2 TMDL Planning Area ...
..... A-11

Figure A-4. Map Showing Elevations within the Upper Clark Fork Phase 2 TMDL Planning Area A-12

Figure A-5. Map Showing the Geology of the Upper Clark Fork Phase 2 TMDL Planning Area A-13

Figure A-6a. Map Showing the Soil Permeability of the Upper Clark Fork Phase 2 TMDL Planning Area
..... A-14

Figure A-6b. Map Showing the Soil Erodibility (K Factor) of the Upper Clark Fork Phase 2 TMDL Planning
Area A-15

Figure A-7. Map Showing the Surface Slope in the Upper Clark Fork Phase 2 TMDL Planning Area A-16

Figure A-8. Map Showing the Hydrography in the Upper Clark Fork Phase 2 TMDL Planning Area A-17

Figure A-9. Map Showing Locations of Wells in the Upper Clark Fork Phase 2 TMDL Planning Area A-18

Figure A-10. Map Showing the Average Annual Precipitation in the Upper Clark Fork Phase 2 TMDL
Planning Area
..... A-19

Figure A-11. Map Showing the Land Cover in the Upper Clark Fork Phase 2 TMDL Planning Area A-20

Figure A-12. Map Showing Fish Species Distribution in the Upper Clark Fork Phase 2 TMDL Planning Area
..... A-21

Figure A-13. Map Showing the Fire History in the Upper Clark Fork Phase 2 TMDL Planning Area A-22

Figure A-14. Map Showing Population Densities in the Upper Clark Fork Phase 2 TMDL Planning Area
..... A-23

Figure A-15. Map Showing the Land Ownership in the Upper Clark Fork Phase 2 TMDL Planning Area
..... A-24

Figure A-16. Map Showing Cropland in the Upper Clark Fork Phase 2 TMDL Planning Area A-25

Figure A-17. Map Showing the Transportation Network within the Upper Clark Fork Phase 2 TMDL
Planning Area A-26

Figure A-18. Map Showing Permitted Discharges, Abandoned Mines, and Superfund Sites in the Upper
Clark Fork Phase 2 TMDL Planning Area A-27

Table A-1. Status of Waterbody Impairments in the Upper Clark Fork Phase 2 TMDL Planning Area based on the 2012 Integrated Report

Waterbody and Location Description	Waterbody ID	Impairment Cause	TMDL Pollutant Category	Impairment Cause Status
CABLE CREEK , headwaters to mouth (Warm Springs Creek)	MT76G002_030	Chlorophyll- <i>a</i>	Not a Pollutant	Not yet addressed
CLARK FORK , Flint Creek to Little Blackfoot River	MT76G001_010	Alteration in streamside or littoral vegetative covers	Not a Pollutant	Addressed by sediment TMDL in this document
		Arsenic	Metals	Addressed by a metals TMDL in a separate, concurrent document
		Copper	Metals	Addressed by a metals TMDL in a separate, concurrent document
		Lead	Metals	Addressed by a metals TMDL in a separate, concurrent document
		Low flow alterations	Not a Pollutant	No action
		Physical substrate habitat alterations	Not a Pollutant	Addressed by sediment TMDL in this document
		Sedimentation/Siltation	Sediment	Addressed by sediment TMDL in this document
		Zinc	Metals	Not impaired based on updated assessment
CLARK FORK RIVER , the Little Blackfoot River to Cottonwood Creek	MT76G001_030	Alteration in streamside or littoral vegetative covers	Not a Pollutant	Addressed by sediment TMDL in this document
		Copper	Metals	Addressed by a metals TMDL in a separate, concurrent document
		Lead	Metals	Addressed by a metals TMDL in a separate, concurrent document
		Low flow alterations	Not a Pollutant	No action
		Physical substrate habitat alterations	Not a Pollutant	Addressed by sediment TMDL in this document
		Sedimentation/Siltation	Sediment	Addressed by sediment TMDL in this document
		Zinc	Metals	Addressed by a metals TMDL in a separate, concurrent document

Table A-1. Status of Waterbody Impairments in the Upper Clark Fork Phase 2 TMDL Planning Area based on the 2012 Integrated Report

Waterbody and Location Description	Waterbody ID	Impairment Cause	TMDL Pollutant Category	Impairment Cause Status
CLARK FORK RIVER, Cottonwood Creek to Warm Springs Creek	MT76G001_040	Alteration in streamside or littoral vegetative covers	Not a Pollutant	Addressed by sediment TMDL in this document
		Arsenic	Metals	Not impaired based on updated assessment
		Cadmium	Metals	Addressed by a metals TMDL in a separate, concurrent document
		Copper	Metals	Addressed by a metals TMDL in a separate, concurrent document
		Lead	Metals	Addressed by a metals TMDL in a separate, concurrent document
		Low flow alterations	Not a Pollutant	No action
		Sedimentation/Siltation	Sediment	Addressed by sediment TMDL in this document
DEMPSEY CREEK, the national forest boundary to mouth (Clark Fork River)	MT76G002_100	Nitrate/Nitrite	Nutrients	Not impaired based on updated assessment
DUNKLEBERG CREEK, headwaters to T9N R12W S2 SW	MT76G005_071	Alteration in streamside or littoral vegetative covers	Not a Pollutant	Not yet addressed
DUNKLEBERG CREEK, T9N R12W S2 to mouth (Un-named Canal), T10N R11W S30	MT76G005_072	Alteration in streamside or littoral vegetative covers	Not a Pollutant	Not yet addressed
		Nitrogen (Total)	Nutrients	Addressed by a TN TMDL in this document
GOLD CREEK, headwaters to National Forest boundary	MT76G005_091	Alteration in streamside or littoral vegetative covers	Not a Pollutant	Not yet addressed
GOLD CREEK, the forest boundary to mouth (Clark Fork River)	MT76G005_092	Low flow alterations	Not a Pollutant	Not yet addressed
		Nitrogen (Total)	Nutrients	Addressed by a TN TMDL in this document
HOOVER CREEK, Miller Lake to mouth (Clark Fork River)	MT76G005_082	Nitrogen (Total)	Nutrients	Addressed by a TN TMDL in this document

Table A-1. Status of Waterbody Impairments in the Upper Clark Fork Phase 2 TMDL Planning Area based on the 2012 Integrated Report

Waterbody and Location Description	Waterbody ID	Impairment Cause	TMDL Pollutant Category	Impairment Cause Status
LOST CREEK , the south State Park boundary to mouth (Clark Fork River)	MT76G002_072	Alteration in streamside or littoral vegetative covers	Not a Pollutant	Not yet addressed
		Iron	Metals	Not impaired based on updated assessment
		Low flow alterations	Not a Pollutant	Not yet addressed
		Manganese	Metals	Not impaired based on updated assessment
		Nitrate/Nitrite (Nitrite + Nitrate as N)	Nutrients	Addressed by a TN TMDL in this document
		Physical substrate habitat alterations	Not a Pollutant	Not yet addressed
		Sulfates	Metals	Addressed by a metals TMDL in a separate, concurrent document
MILL CREEK , headwaters to section line between Sec 27 and 28, T4N, R11W	MT76G002_051	Chromium (Total)	Metals	Not impaired based on updated assessment
MILL CREEK , to section line between Sec 27 and 28, T4N, R11W to Mill-Willow bypass diversion	MT76G002_052	Alteration in streamside or littoral vegetative covers	Not a Pollutant	Not yet addressed
		Aluminum	Metals	Not impaired based on updated assessment
		Low flow alterations	Not a Pollutant	Not yet addressed
MODESTY CREEK , headwaters to mouth (Clark Fork River)	MT76G002_080	Low flow alterations	Not a pollutant	Not yet addressed
PETERSON CREEK , headwaters to Jack Creek	MT76G002_131	Phosphorus (Total)	Nutrients	Addressed by a TP TMDL in this document
		Nitrogen (Total)	Nutrients	Addressed by a TN TMDL in this document
		Total Kjeldahl Nitrogen (TKN)	Nutrients	Addressed by a TN TMDL in this document
RACETRACK CREEK , the national forest boundary to mouth (Clark Fork River)	MT76G002_090	Alteration in streamside or littoral vegetative covers	Not a Pollutant	Not yet addressed
		Low flow alterations	Not a Pollutant	Not yet addressed

Table A-1. Status of Waterbody Impairments in the Upper Clark Fork Phase 2 TMDL Planning Area based on the 2012 Integrated Report

Waterbody and Location Description	Waterbody ID	Impairment Cause	TMDL Pollutant Category	Impairment Cause Status
SILVER BOW CREEK, headwaters to mouth (Clark Fork River)	MT76G003_020	Aluminum	Metals	Not impaired based on updated assessment
		Arsenic	Metals	Addressed by a metals TMDL in a separate, concurrent document
		Copper	Metals	Addressed by a metals TMDL in a separate, concurrent document
		Iron	Metals	Not impaired based on updated assessment
		Lead	Metals	Addressed by a metals TMDL in a separate, concurrent document
		Manganese	Metals	Addressed by a metals TMDL in a separate, concurrent document
		Nitrates	Nutrients	Addressed by a TN TMDL in this document
		Physical substrate habitat alterations	Not a pollutant	Addressed by a sediment TMDL in this document
		Sedimentation/Siltation	Sediment	Addressed by a sediment TMDL in this document
		Silver	Metals	Not impaired based on updated assessment
		Zinc	Metals	Addressed by a metals TMDL in a separate, concurrent document
STORM LAKE CREEK, headwaters to mouth (Un-Named canal/Ditch)	MT76G002_040	Chlorophyll- <i>a</i>	Not a Pollutant	Not yet addressed
WARM SPRINGS CREEK, headwaters to Meyers Dam, T5N R12W S25	MT76G002_011	Physical substrate habitat alterations	Not a Pollutant	Not yet addressed
WARM SPRINGS CREEK, Meyers Dam T5N R12W S25 to mouth (Clark Fork), T6N R9W S6	MT76G002_012	Alteration in streamside or littoral vegetative covers	Not a Pollutant	Not yet addressed
		Low flow alterations	Not a Pollutant	Not yet addressed
		Physical substrate habitat alterations	Not a Pollutant	Not yet addressed
WARM SPRINGS CREEK, headwaters to line between R9W and R10W	MT76G005_111	Alteration in streamside or littoral vegetative covers	Not a Pollutant	Addressed by a sediment TMDL in a separate, concurrent document
		Sedimentation/Siltation	Sediment	Addressed by a sediment TMDL in a separate, concurrent document

Table A-1. Status of Waterbody Impairments in the Upper Clark Fork Phase 2 TMDL Planning Area based on the 2012 Integrated Report

Waterbody and Location Description	Waterbody ID	Impairment Cause	TMDL Pollutant Category	Impairment Cause Status
WILLOW CREEK, headwaters to T4N R10W S30	MT76G002_061	Phosphorus (Total)	Nutrients	Addressed by a TP TMDL in this document

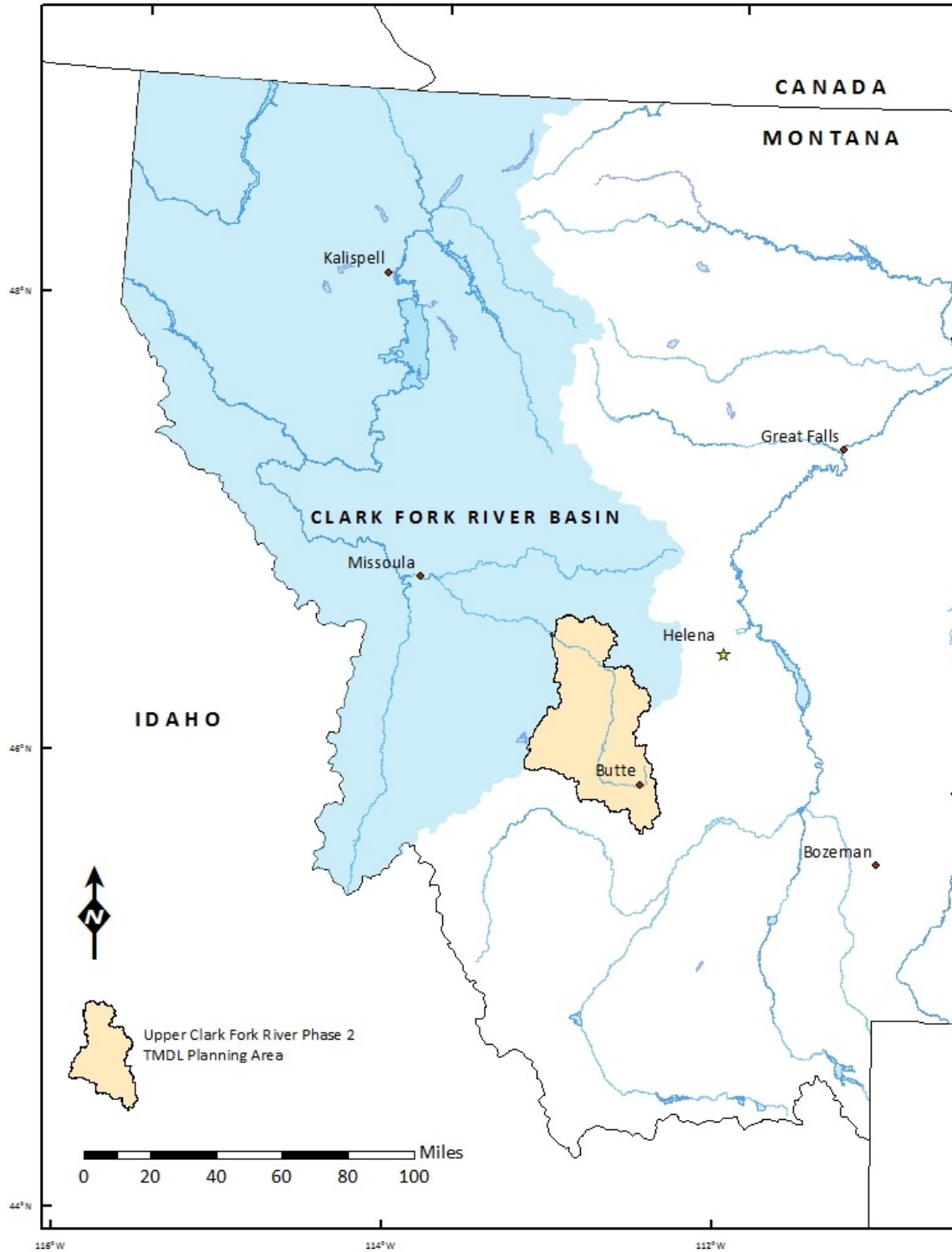


Figure A-1. Location of the Upper Clark Fork Phase 2 TMDL Planning Area

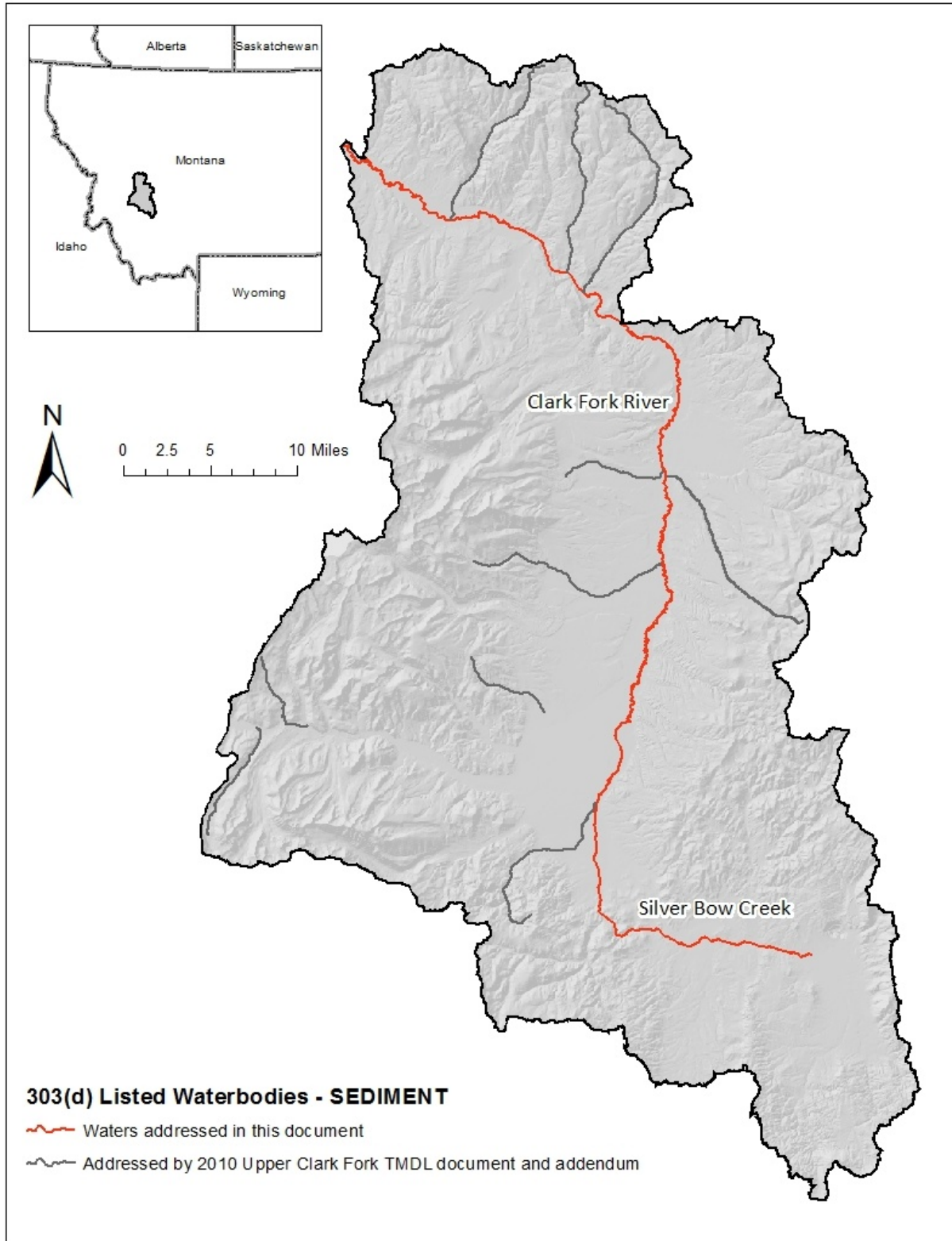


Figure A-2a. Map of Sediment Listed Waterbodies Addressed in this Document

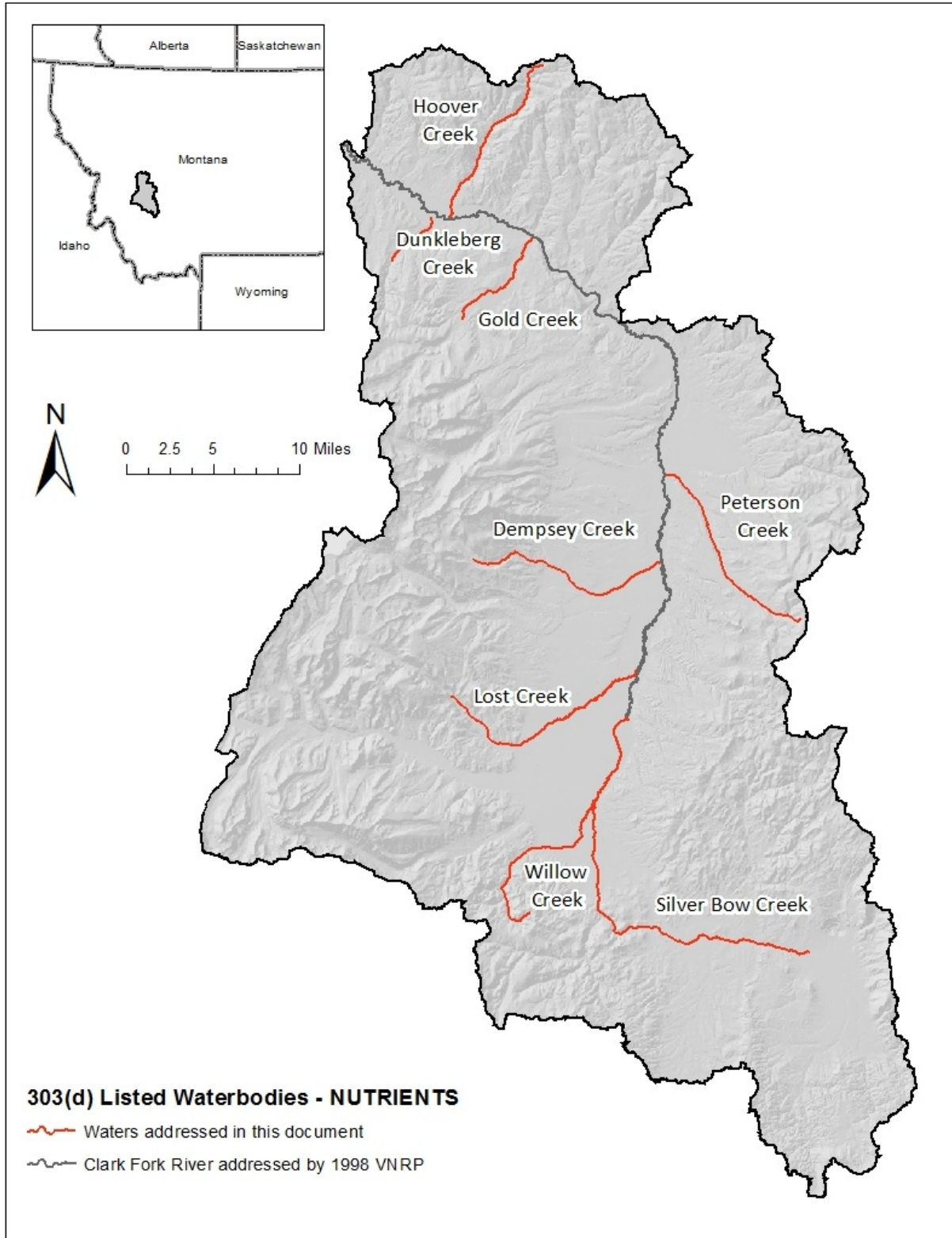


Figure A-2b. Map of Nutrient Listed Waterbodies Addressed in this Document

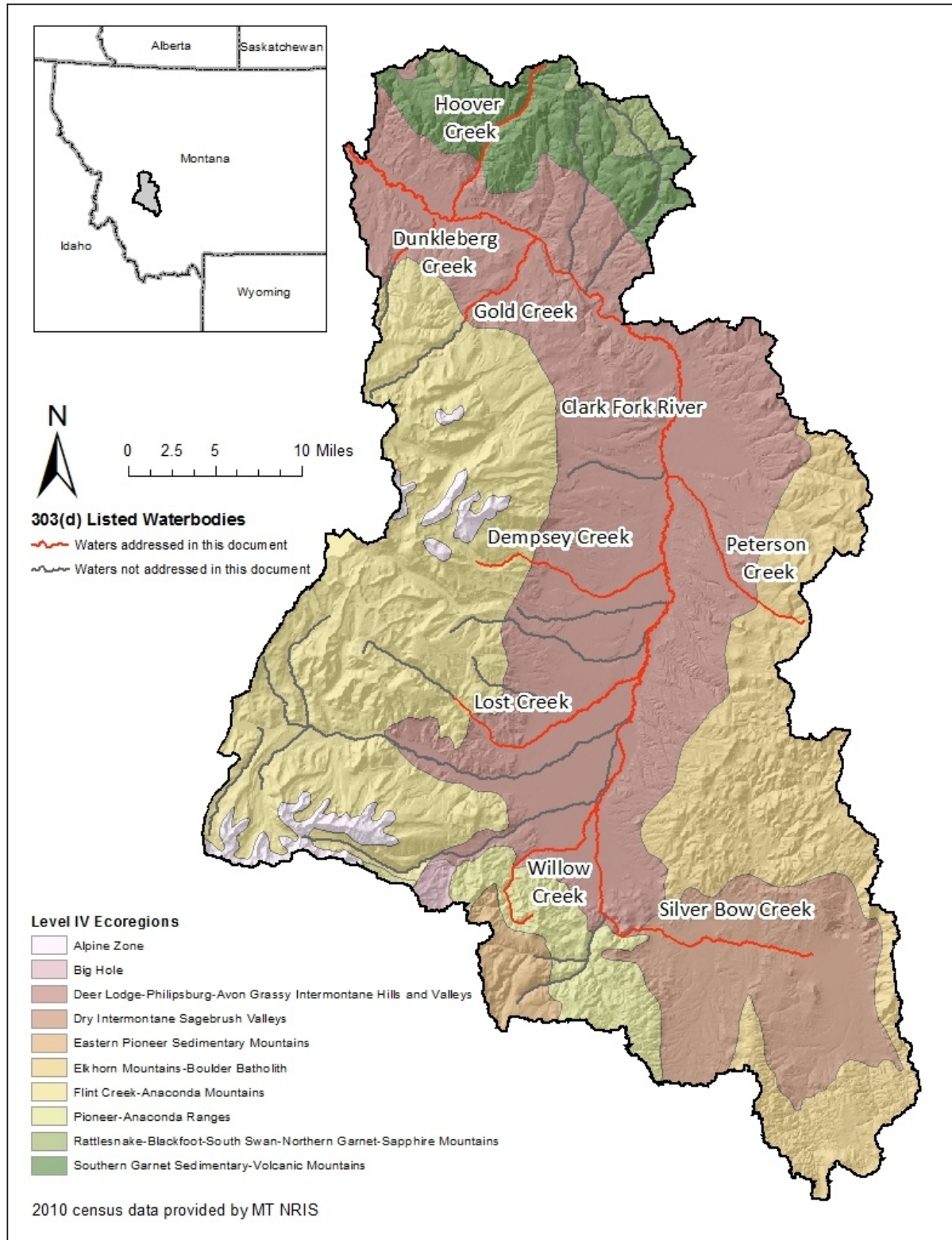


Figure A-3. Map of the Level IV Ecoregions Found in the Upper Clark Fork Phase 2 TMDL Planning Area

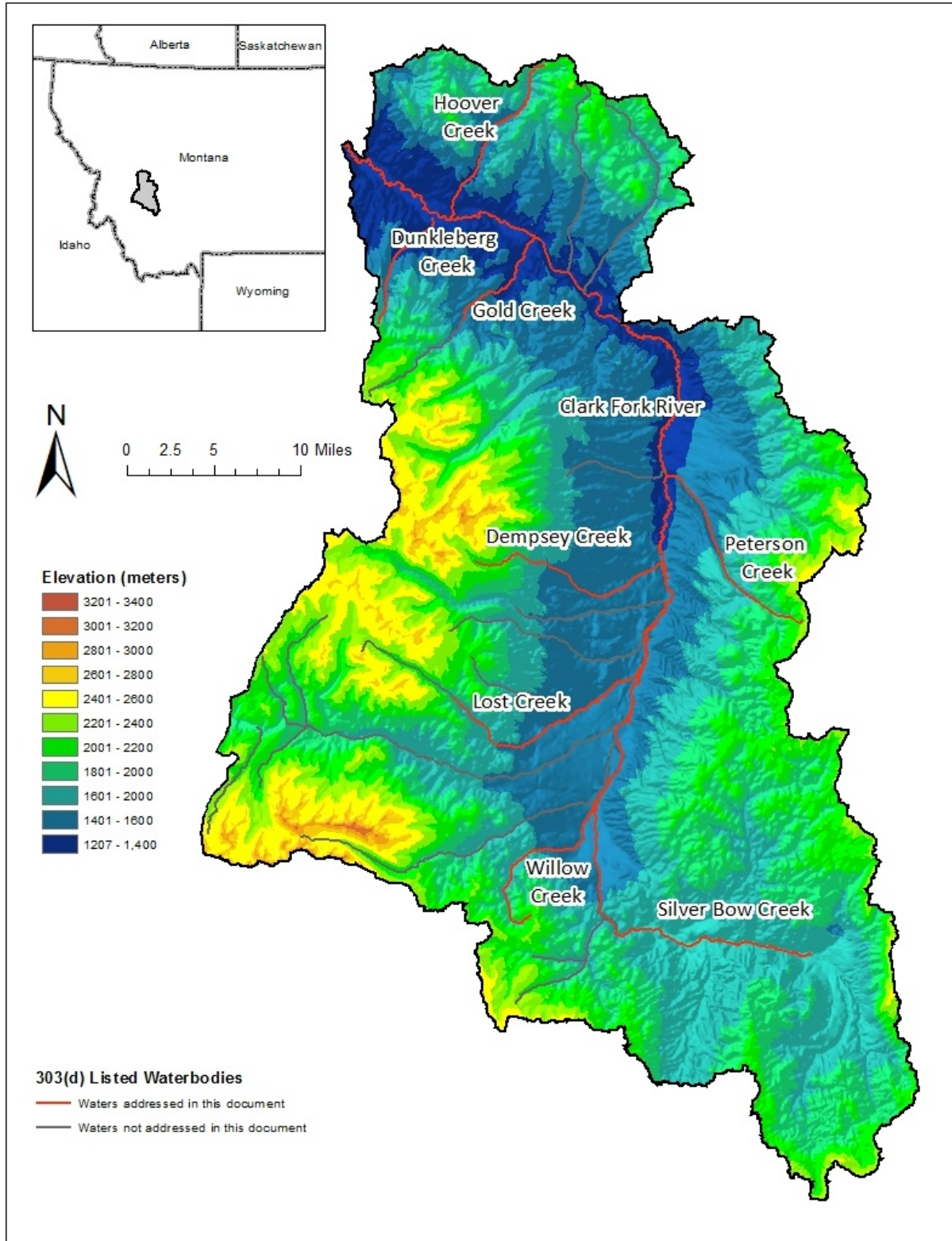


Figure A-4. Map Showing Elevations within the Upper Clark Fork Phase 2 TMDL Planning Area

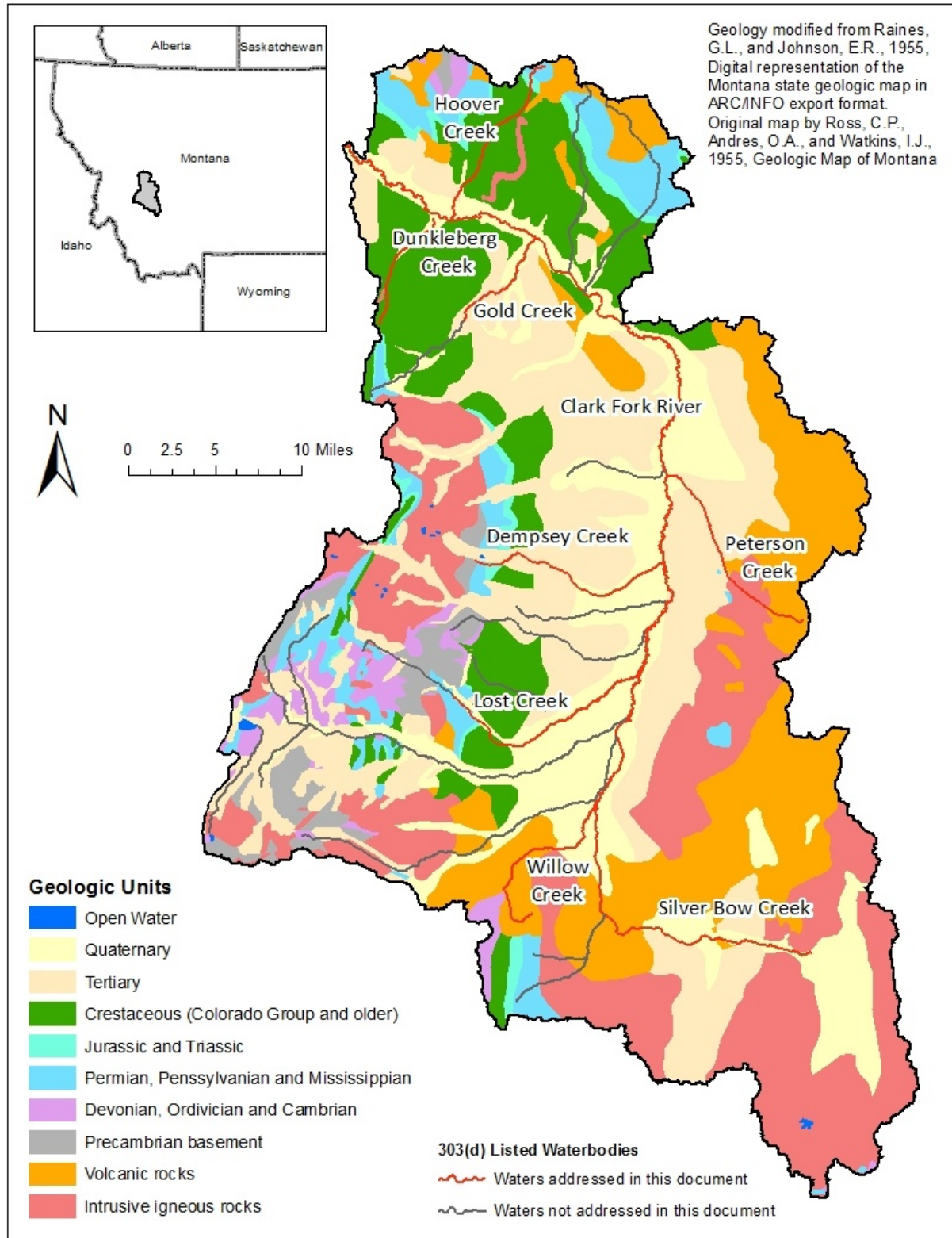


Figure A-5. Map Showing the Geology of the Upper Clark Fork Phase 2 TMDL Planning Area

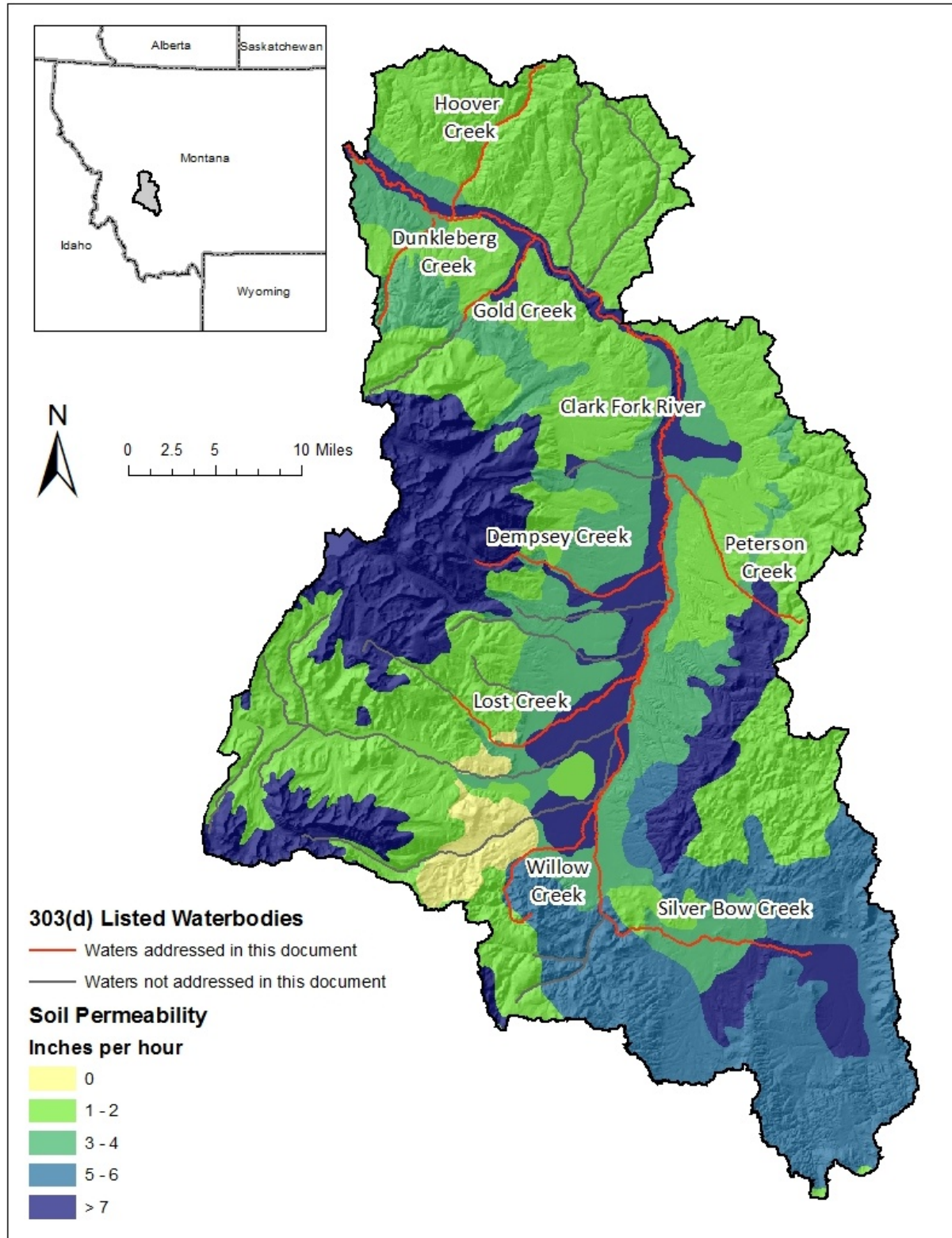


Figure A-6a. Map Showing the Soil Permeability of the Upper Clark Fork Phase 2 TMDL Planning Area

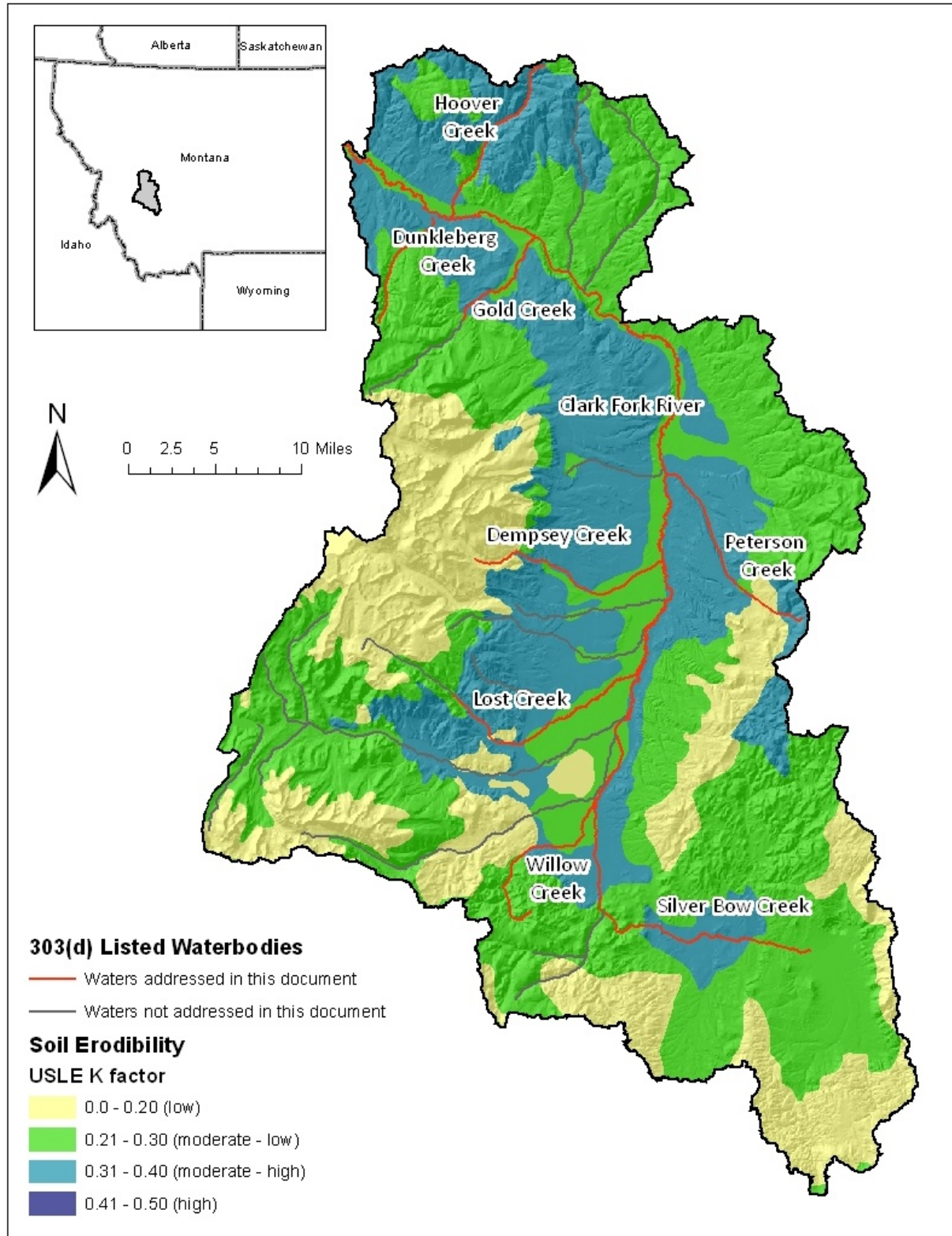


Figure A-6b. Map Showing the Soil Erodibility (K Factor) of the Upper Clark Fork Phase 2 TMDL Planning Area

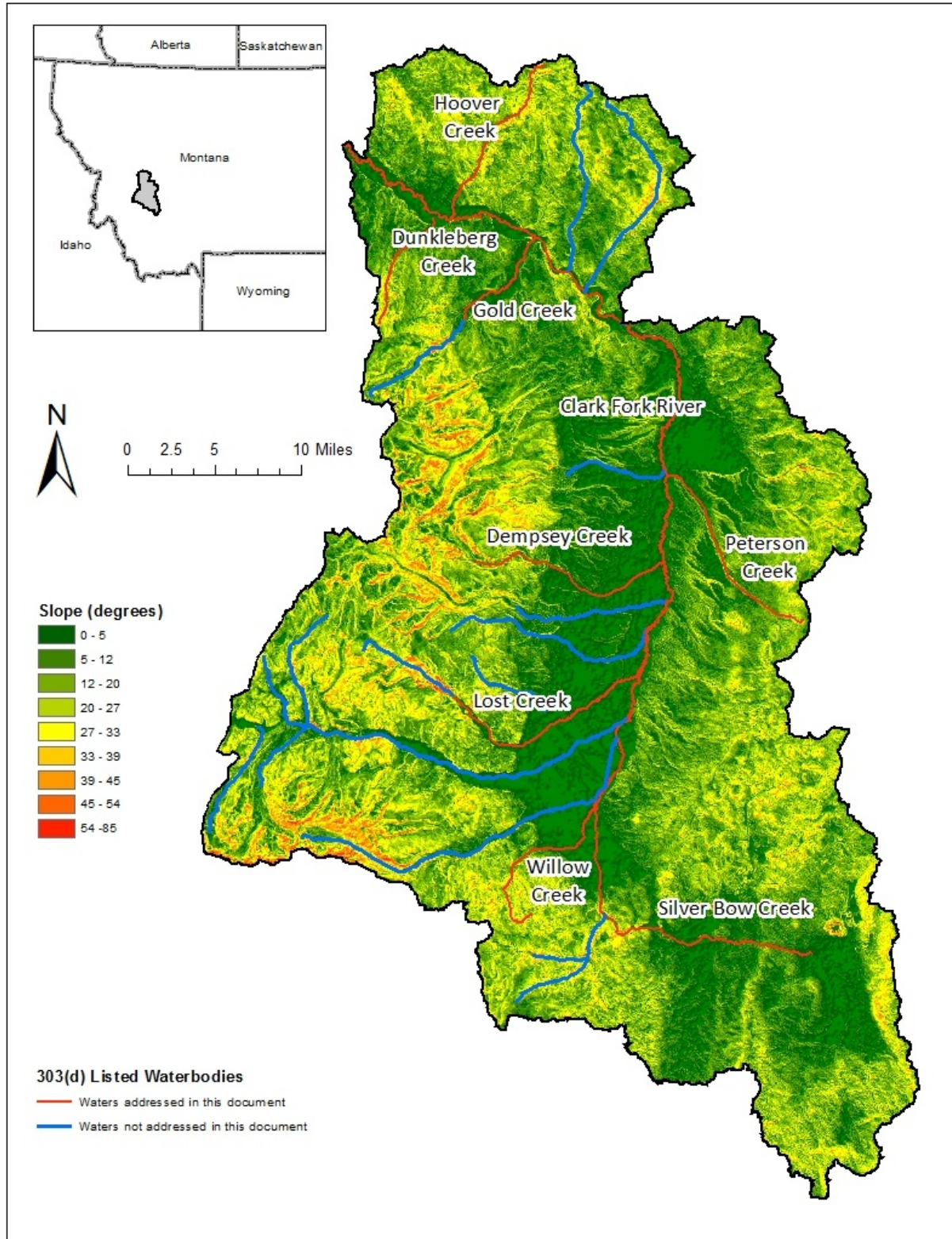


Figure A-7. Map Showing the Surface Slope in the Upper Clark Fork Phase 2 TMDL Planning Area

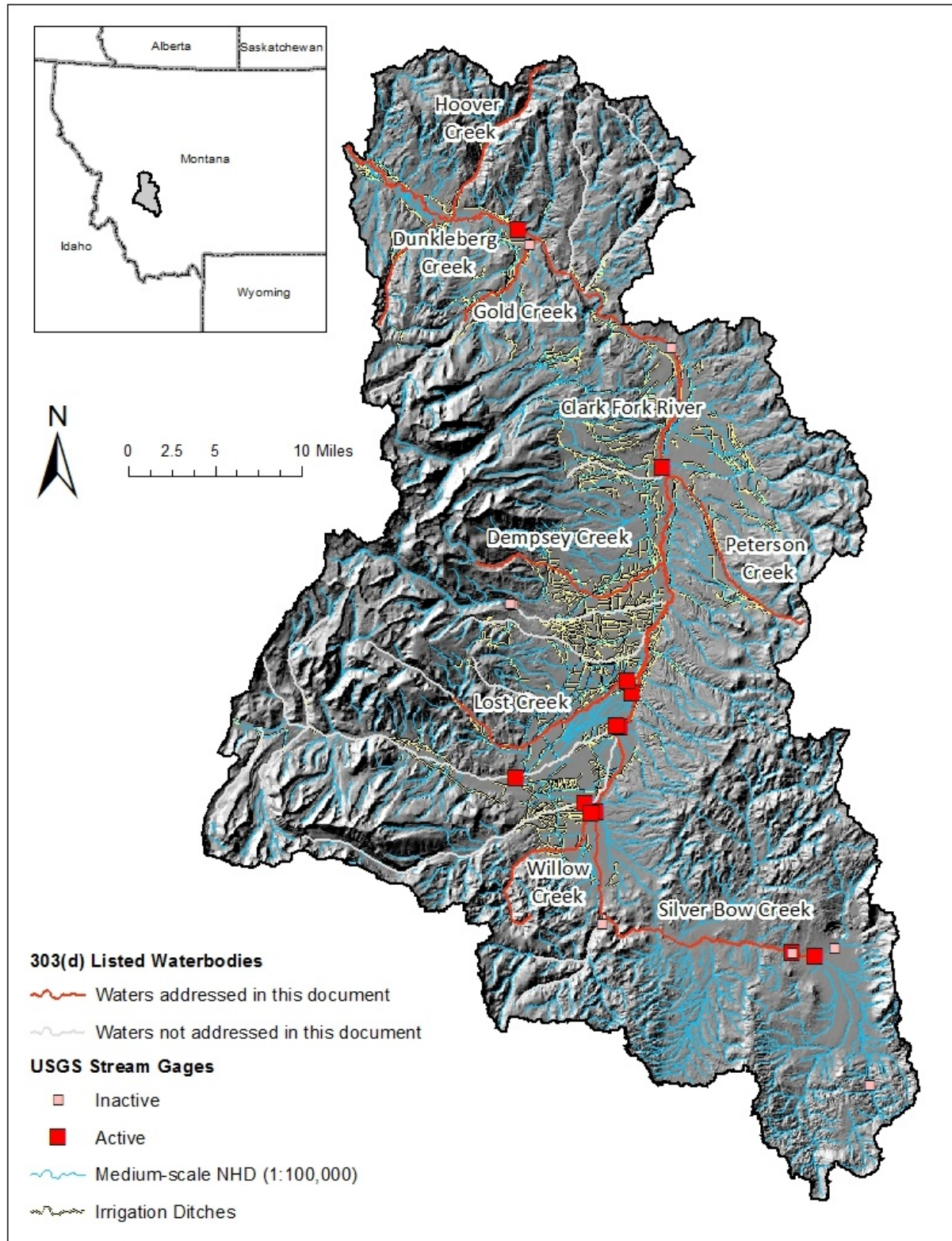


Figure A-8. Map Showing the Hydrography in the Upper Clark Fork Phase 2 TMDL Planning Area

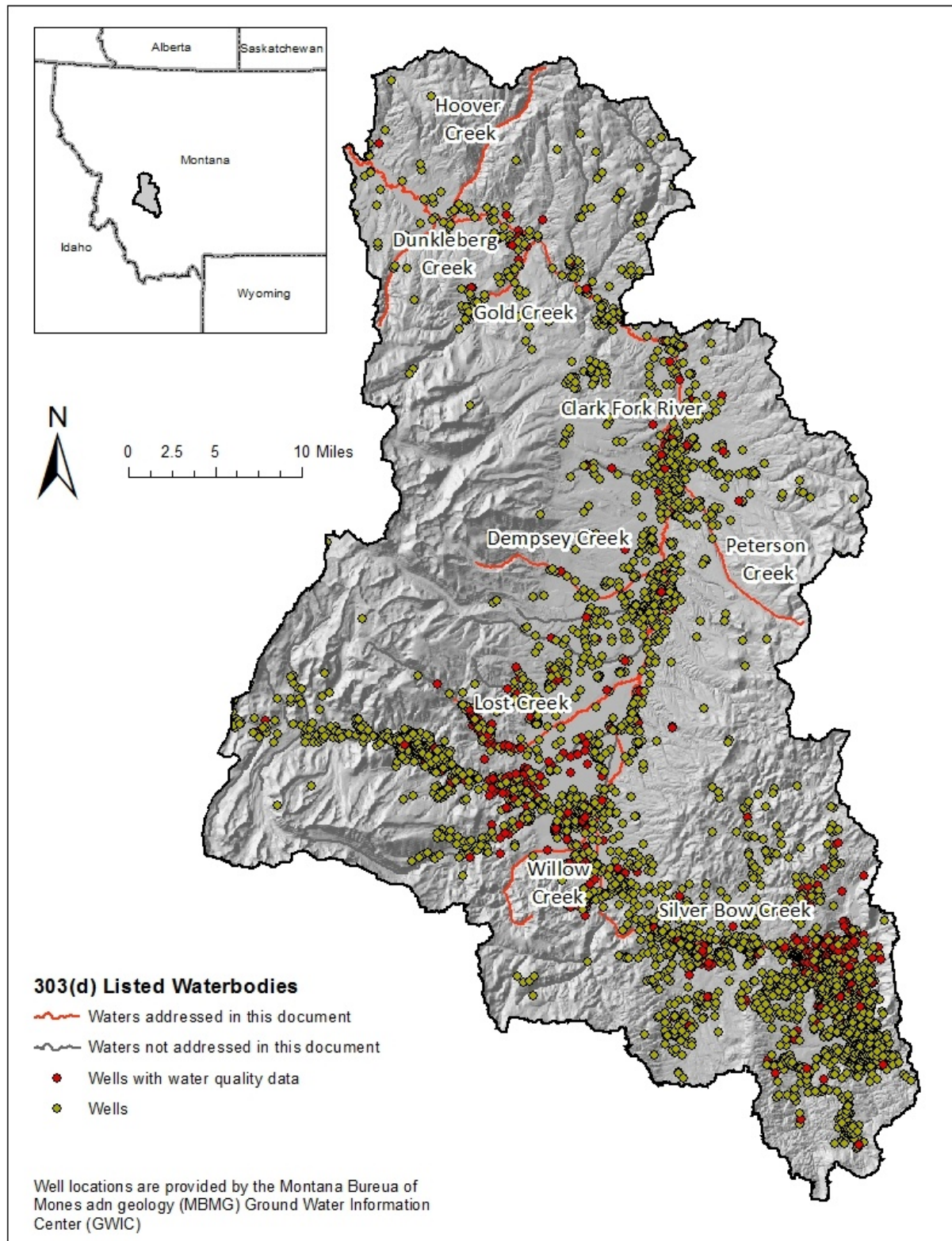


Figure A-9. Map Showing Locations of Wells in the Upper Clark Fork Phase 2 TMDL Planning Area

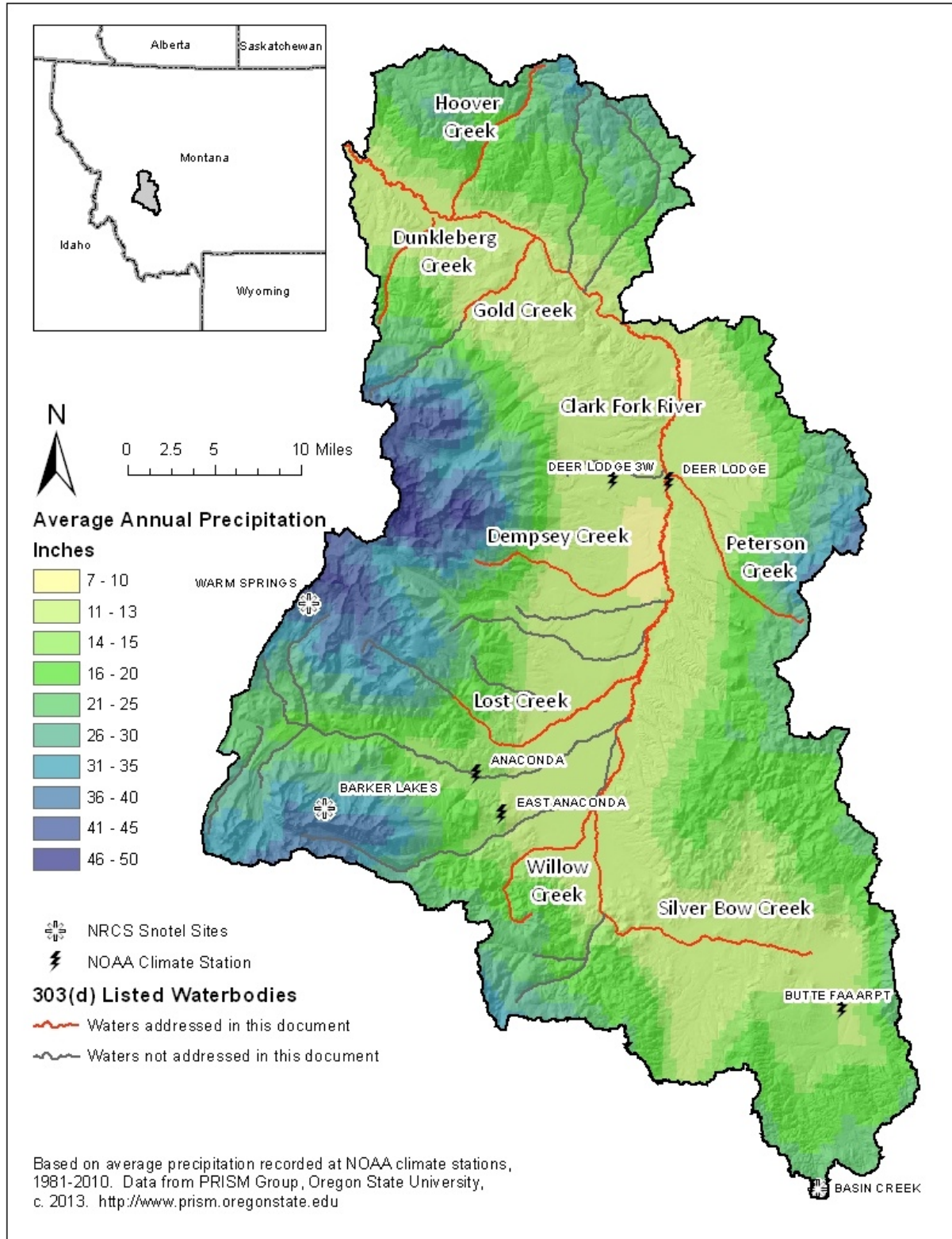


Figure A-10. Map Showing the Average Annual Precipitation in the Upper Clark Fork Phase 2 TMDL Planning Area

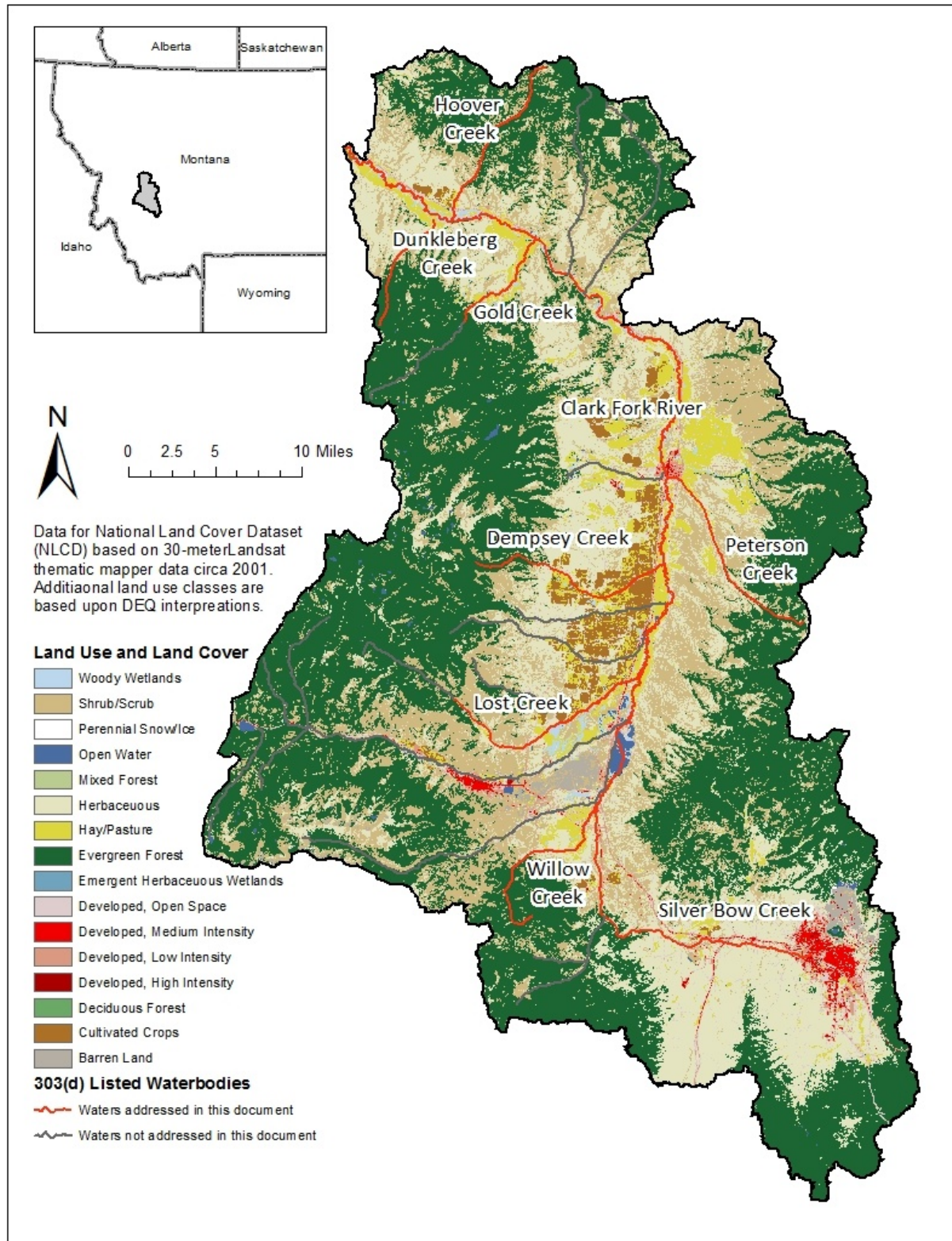


Figure A-11. Map Showing the Land Cover in the Upper Clark Fork Phase 2 TMDL Planning Area

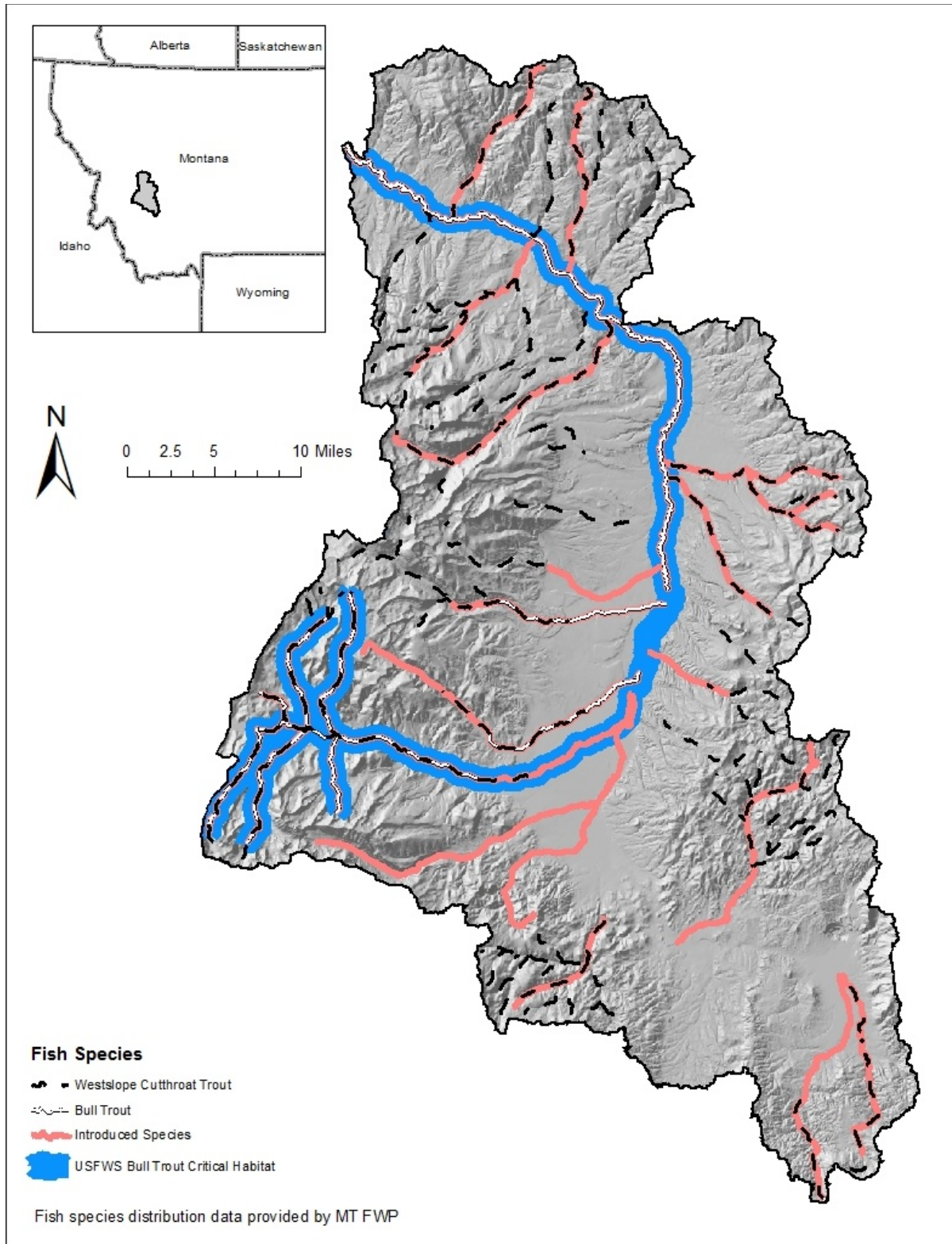


Figure A-12. Map Showing Fish Species Distribution in the Upper Clark Fork Phase 2 TMDL Planning Area

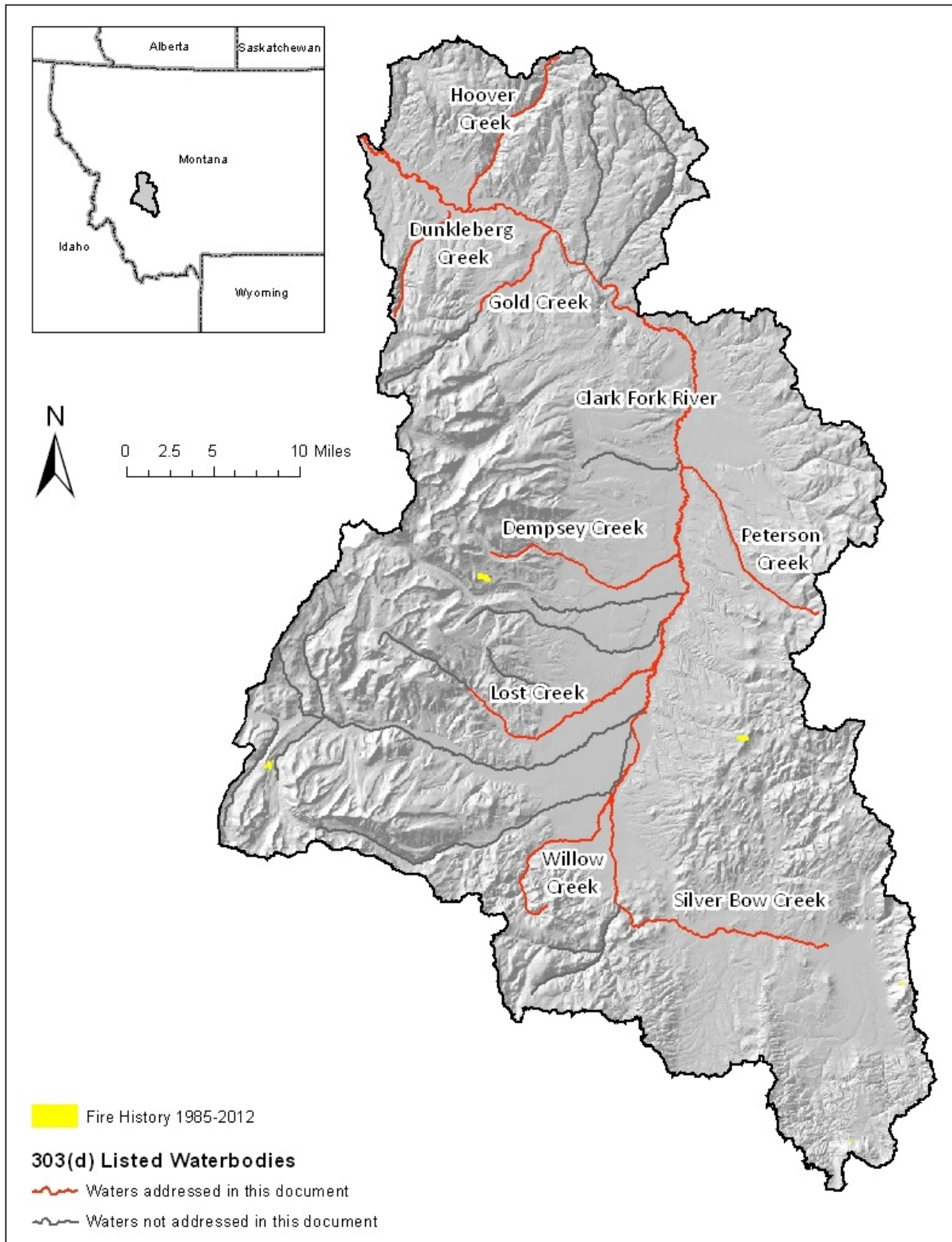


Figure A-13. Map Showing the Fire History in the Upper Clark Fork Phase 2 TMDL Planning Area

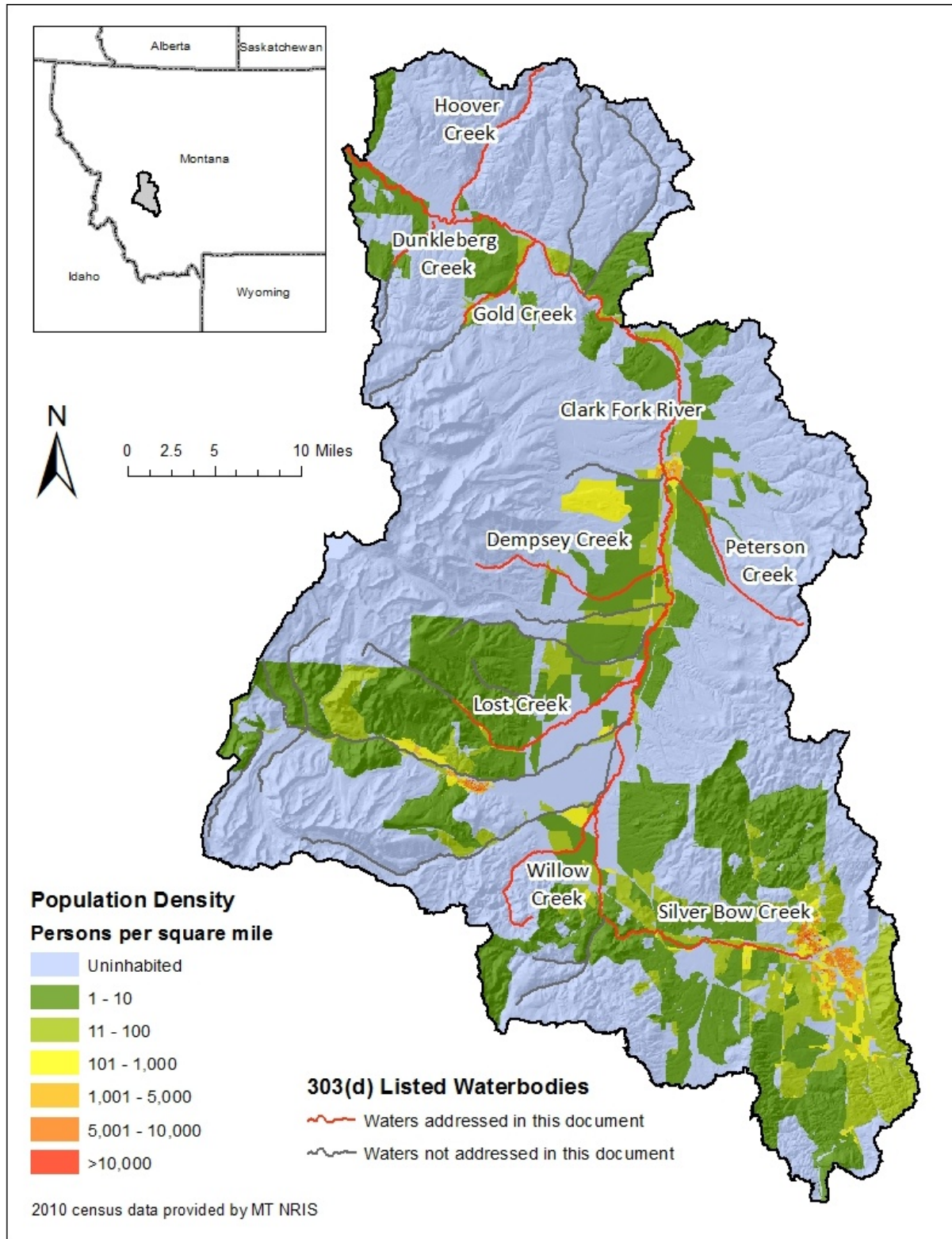


Figure A-14. Map Showing Population Densities in the Upper Clark Fork Phase 2 TMDL Planning Area

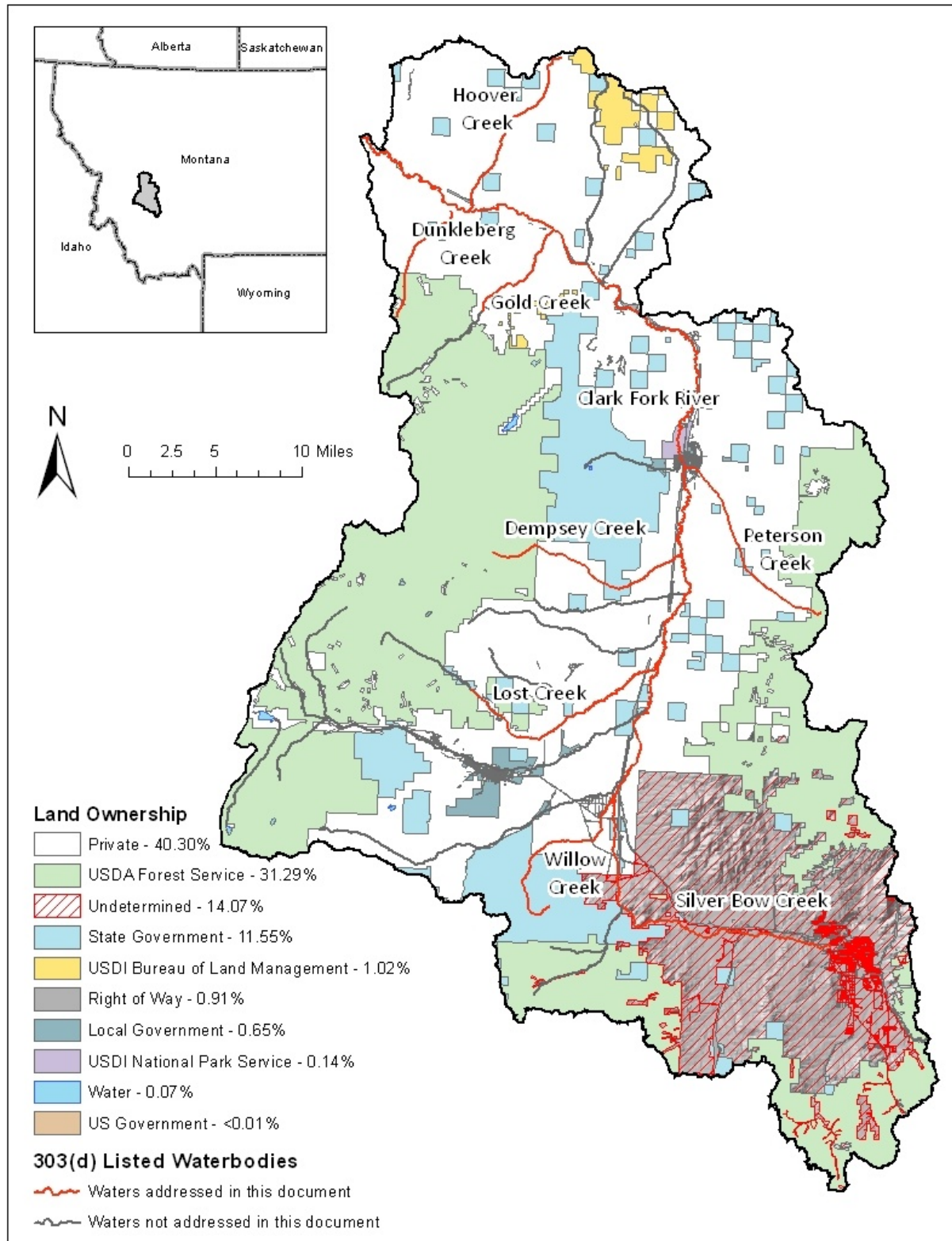


Figure A-15. Map Showing the Land Ownership in the Upper Clark Fork Phase 2 TMDL Planning Area

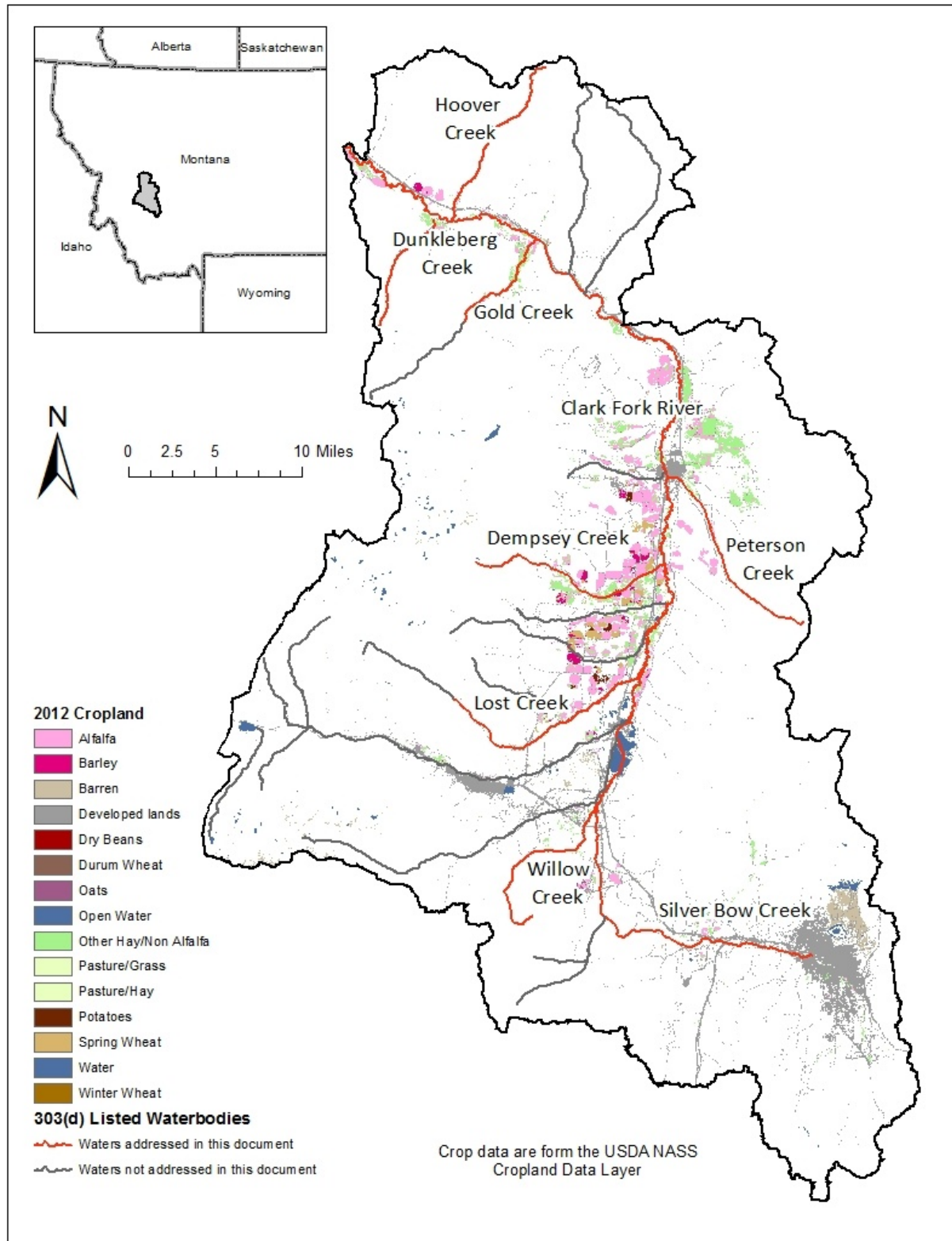


Figure A-16. Map Showing Cropland in the Upper Clark Fork Phase 2 TMDL Planning Area

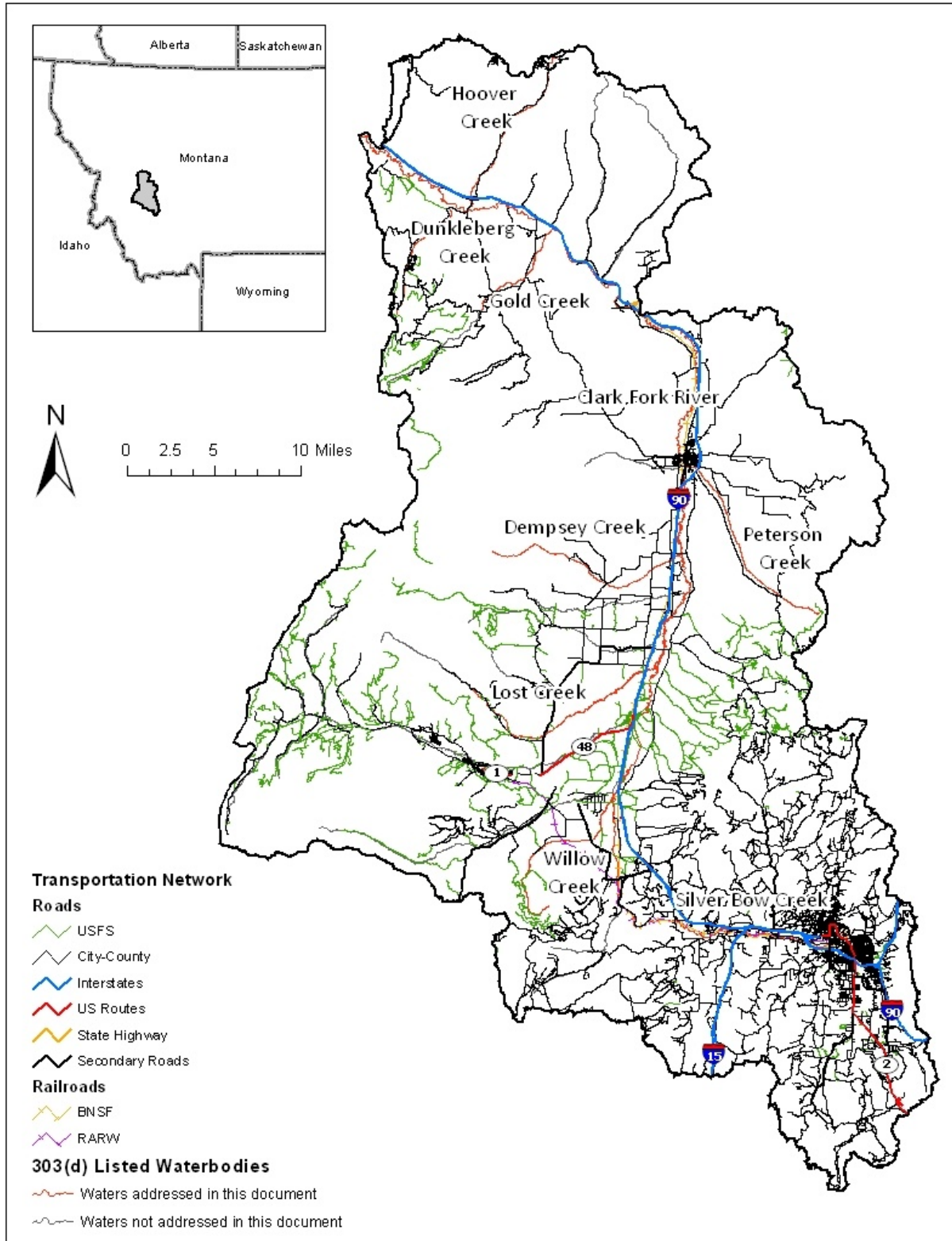


Figure A-17. Map Showing the Transportation Network within the Upper Clark Fork Phase 2 TMDL Planning Area

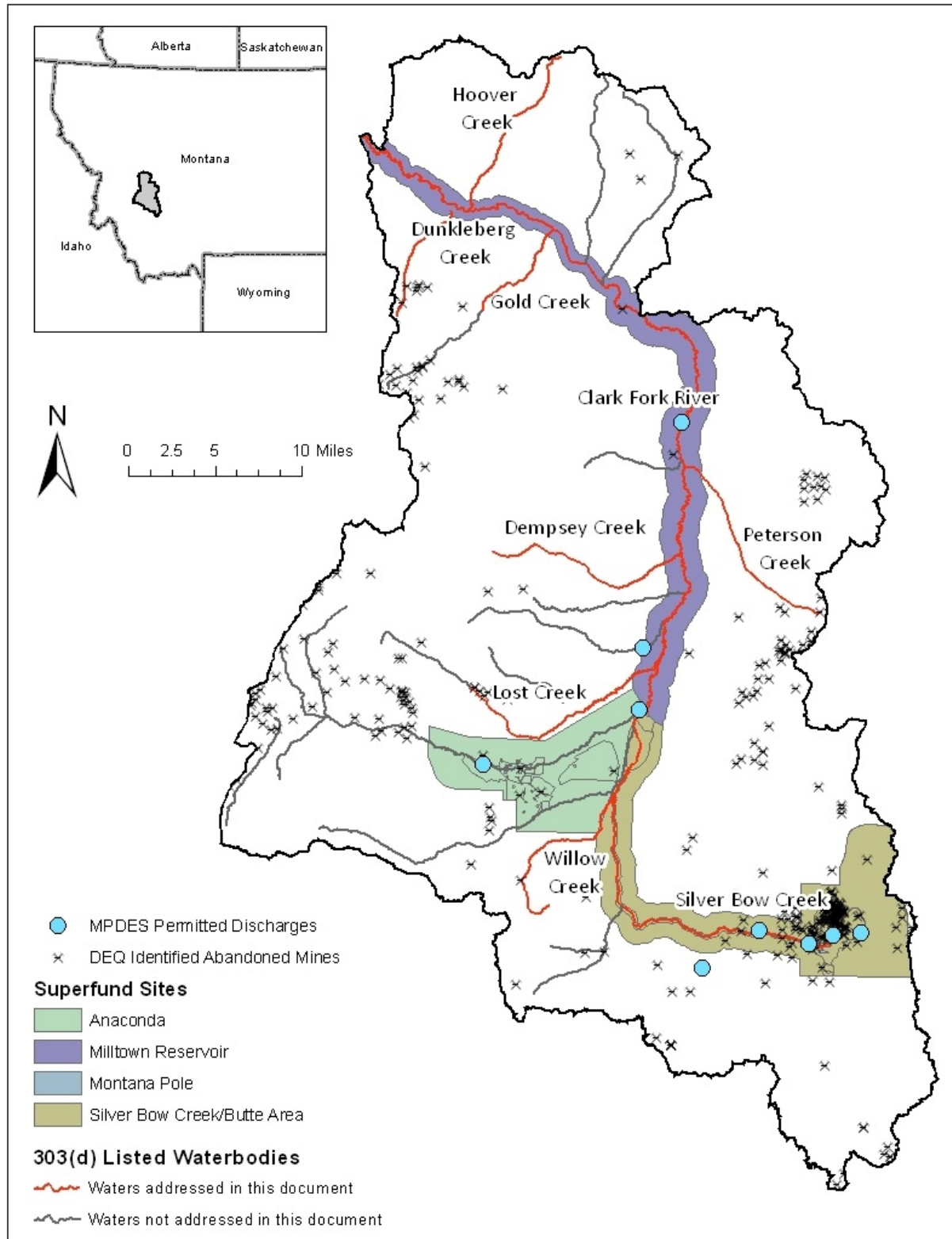


Figure A-18. Map Showing Permitted Discharges, Abandoned Mines, and Superfund Sites in the Upper Clark Fork Phase 2 TMDL Planning Area

