

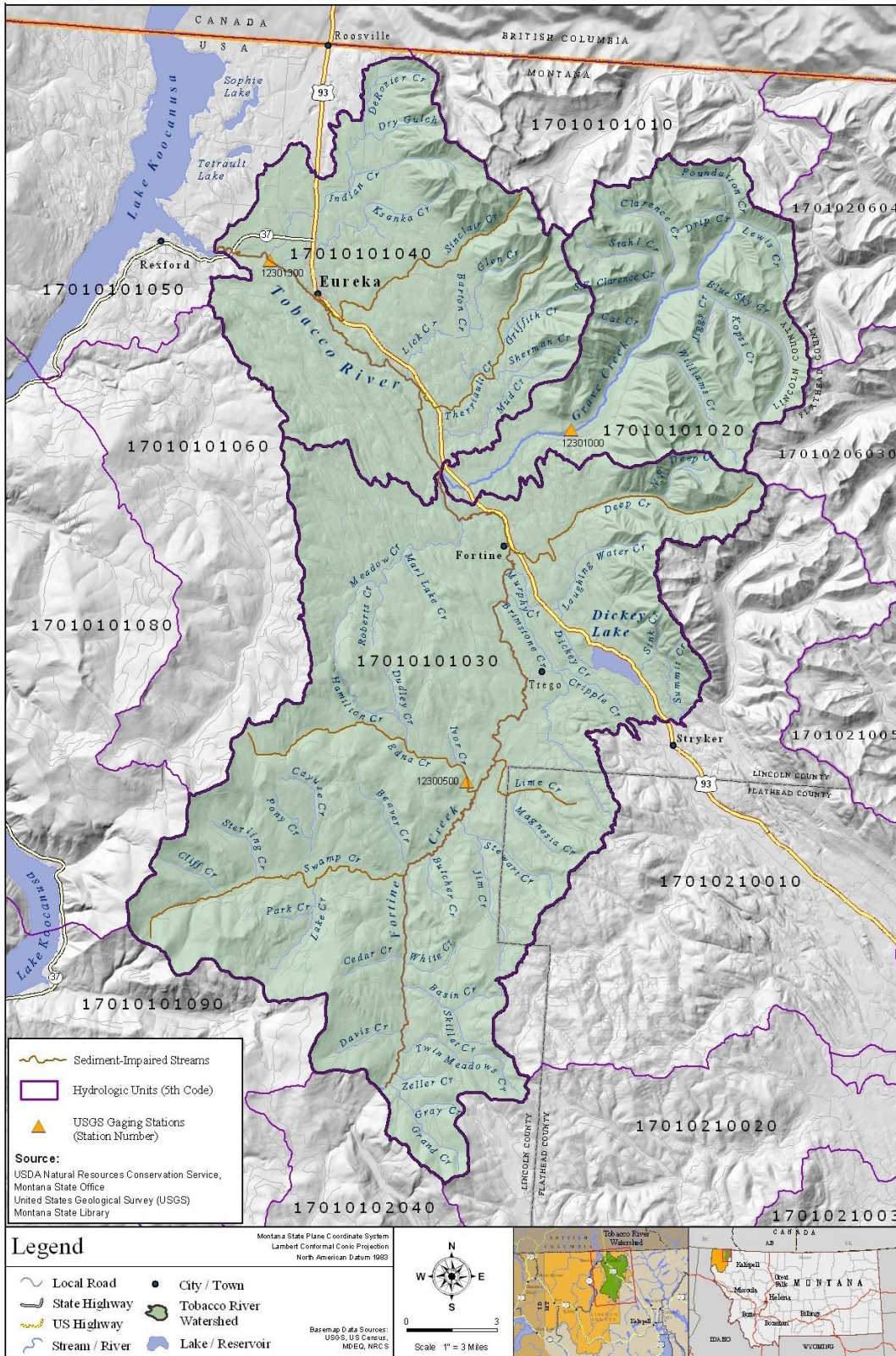
## **APPENDIX A – MAPS AND TABLES**

### **LIST OF MAPS**

Map A-1. Boundary of the Tobacco TMDL Planning Area and waterbodies with completed sediment TMDLs in this document .....	2
Map A-2. Average annual precipitation and location of climate and SNOTEL stations in the Tobacco River watershed .....	5
Map A-3. Geology of the Tobacco River watershed .....	6
Map A-4. Soil Erodibility (K factors) in the Tobacco River watershed .....	7
Map A-5. Types of land cover and land use in the Tobacco River watershed.....	8
Map A-6. Land ownership in the Tobacco River watershed .....	9
Map A-7. Locations of water withdrawals and permitted discharges in the Tobacco River watershed....	10
Map A-8. Locations of active and abandoned mines in the Tobacco River watershed.....	11
Map A-9: Distribution of westslope cutthroat trout in the Tobacco River watershed.....	12
Map A-10: Distribution of bull trout in the Tobacco River watershed .....	13

### **LIST OF TABLES**

Table A-1. 2010 Impaired Waterbodies, Impairment Causes, Impaired Uses, and Impairment Cause Status in the Tobacco TPA.....	A-3
---	-----



Map A-1. Boundary of the Tobacco TMDL Planning Area and waterbodies with completed sediment TMDLs in this document

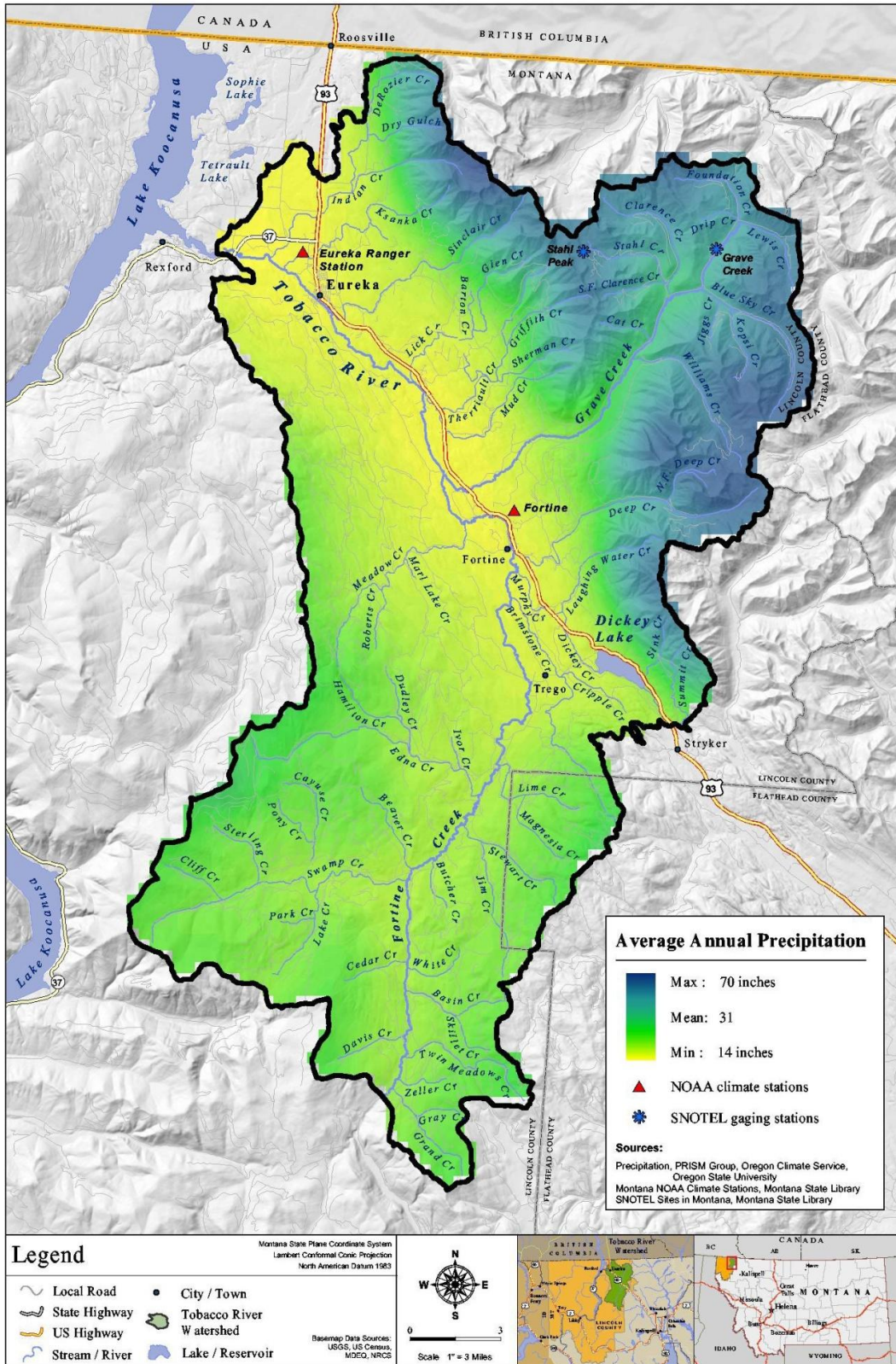
**Table A-1. 2010 Impaired Waterbodies, Impairment Causes, Impaired Uses, and Impairment Cause Status in the Tobacco TPA**

<b>Waterbody &amp; Location Description</b>	<b>Waterbody ID</b>	<b>Impairment Cause</b>	<b>TMDL Pollutant Category</b>	<b>Impaired Use(s)</b>	<b>Impairment Cause Status</b>
<b>Deep Creek,</b> headwaters to mouth (Fortine Creek)	MT76D004_080	Alteration in stream-side or littoral vegetative covers	Not Applicable: Non-Pollutant	Aquatic Life, Cold Water Fishery	Addressed by sediment TMDL in this document
		Excess Algal Growth	Not Applicable: Non-Pollutant	Aquatic Life, Cold Water Fishery, Primary Contact Recreation	Not yet addressed by a TMDL or restoration plan
		Sedimentation / Siltation	Sediment	Aquatic Life, Cold Water Fishery	Sediment TMDL contained in this document
<b>Edna Creek,</b> headwaters to mouth (Fortine Creek)	MT76D004_030	Sedimentation / Siltation	Sediment	Aquatic Life	Sediment TMDL contained in this document
<b>Fortine Creek,</b> headwaters to mouth (Grave Creek)	MT76D004_020	Alteration in stream-side or littoral vegetative covers	Not Applicable: Non-Pollutant	Aquatic Life, Cold Water Fishery	Addressed by sediment TMDL in this document
		Excess Algal Growth	Not Applicable: Non-Pollutant	Aquatic Life, Cold Water Fishery, Primary Contact Recreation	Not yet addressed by a TMDL or restoration plan
		Low flow alterations	Not Applicable: Non-Pollutant	Aquatic Life, Cold Water Fishery, Primary Contact Recreation	Not yet addressed by a TMDL or restoration plan
		Sedimentation / Siltation	Sediment	Aquatic Life, Cold Water Fishery	Sediment TMDL contained in this document
		Temperature, water	Temperature	Aquatic Life, Cold Water Fishery	To be completed in a future project

**Table A-1. 2010 Impaired Waterbodies, Impairment Causes, Impaired Uses, and Impairment Cause Status in the Tobacco TPA**

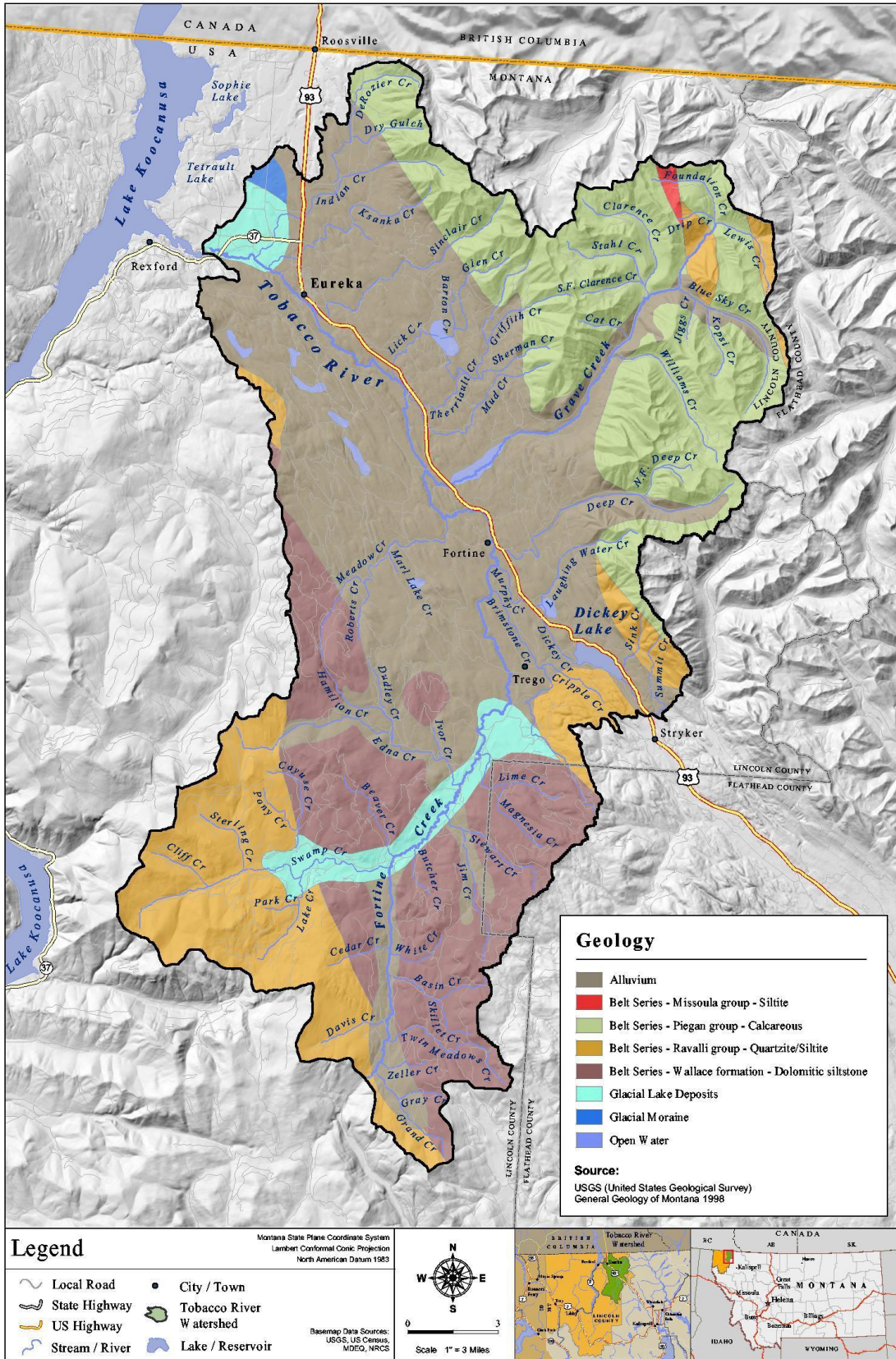
<b>Waterbody &amp; Location Description</b>	<b>Waterbody ID</b>	<b>Impairment Cause</b>	<b>TMDL Pollutant Category</b>	<b>Impaired Use(s)</b>	<b>Impairment Cause Status</b>
<b>Lime Creek</b> , headwaters to mouth (Fortine Creek)	MT76D004_050	Alteration in stream-side or littoral vegetative covers	Not Applicable: Non-Pollutant	Aquatic Life, Cold Water Fishery	Addressed by sediment TMDL in this document
		Arsenic	Metals	Drinking Water	To be completed in a future project
		Chlorophyll- <i>a</i>	Not Applicable: Non-Pollutant	Aquatic Life, Cold Water Fishery, Primary Contact Recreation	Not yet addressed by a TMDL or restoration plan
		Phosphorus (Total)	Nutrients	Aquatic Life, Cold Water Fishery	To be completed in a future project
		Sedimentation / Siltation	Sediment	Aquatic Life, Cold Water Fishery	Sediment TMDL contained in this document
		Total Kjeldahl Nitrogen (TKN)	Nutrients	Aquatic Life, Cold Water Fishery	To be completed in a future project
<b>Swamp Creek</b> , headwaters to mouth (Fortine Creek)	MT76D004_040	Alteration in stream-side or littoral vegetative covers	Not Applicable: Non-Pollutant	Aquatic Life, Cold Water Fishery	Addressed by sediment TMDL in this document
		Low flow alterations	Not Applicable: Non-Pollutant	Aquatic Life, Cold Water Fishery, Primary Contact Recreation	Not yet addressed by a TMDL or restoration plan
		Sedimentation / Siltation	Sediment	Aquatic Life, Cold Water Fishery	Sediment TMDL contained in this document
<b>Therriault Creek</b> , headwaters to mouth (Tobacco River)	MT76D004_070	Sedimentation / Siltation	Sediment	Aquatic Life, Cold Water Fishery	Sediment TMDL contained in this document
<b>Tobacco River</b> , confluence of Grave Creek & Fortine Creek to mouth (Lake Koochanusa)	MT76D004_010	Physical substrate habitat alterations	Not Applicable: Non-Pollutant	Aquatic Life, Cold Water Fishery	Addressed by sediment TMDL in this document
		Sedimentation / Siltation	Sediment	Aquatic Life, Cold Water Fishery	Sediment TMDL contained in this document



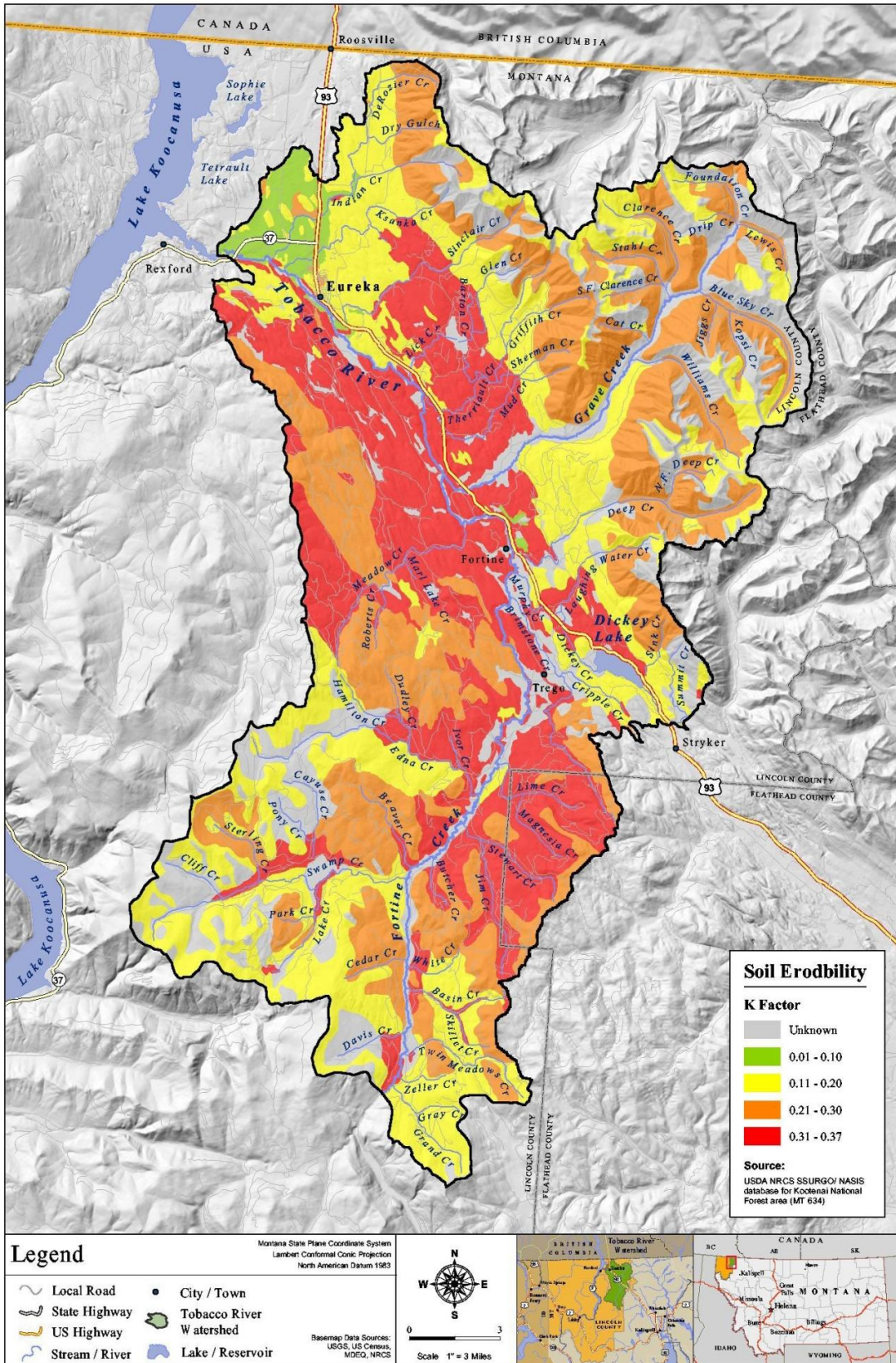


Map A-2. Average annual precipitation and location of climate and SNOTEL stations in the Tobacco River watershed



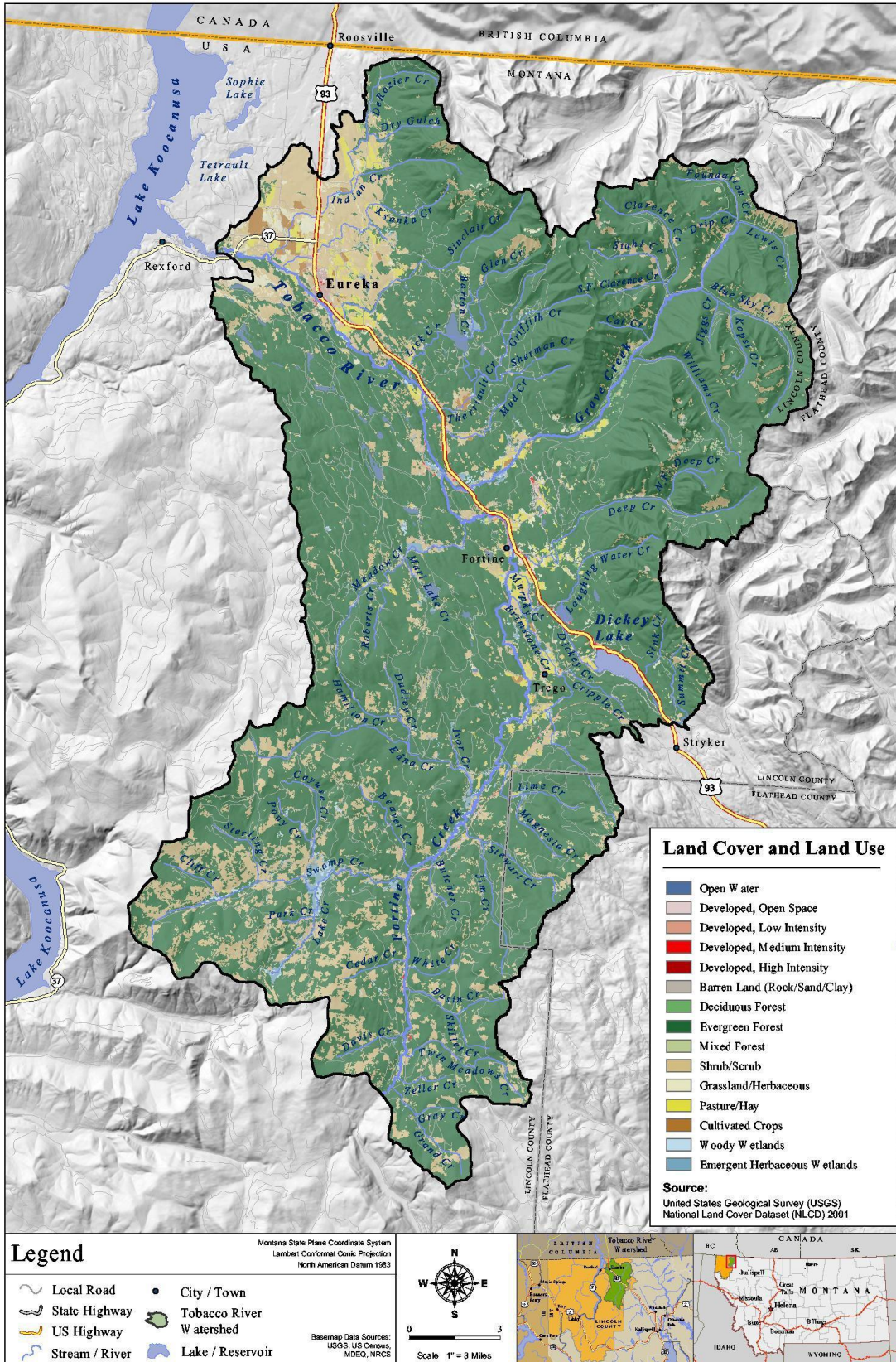






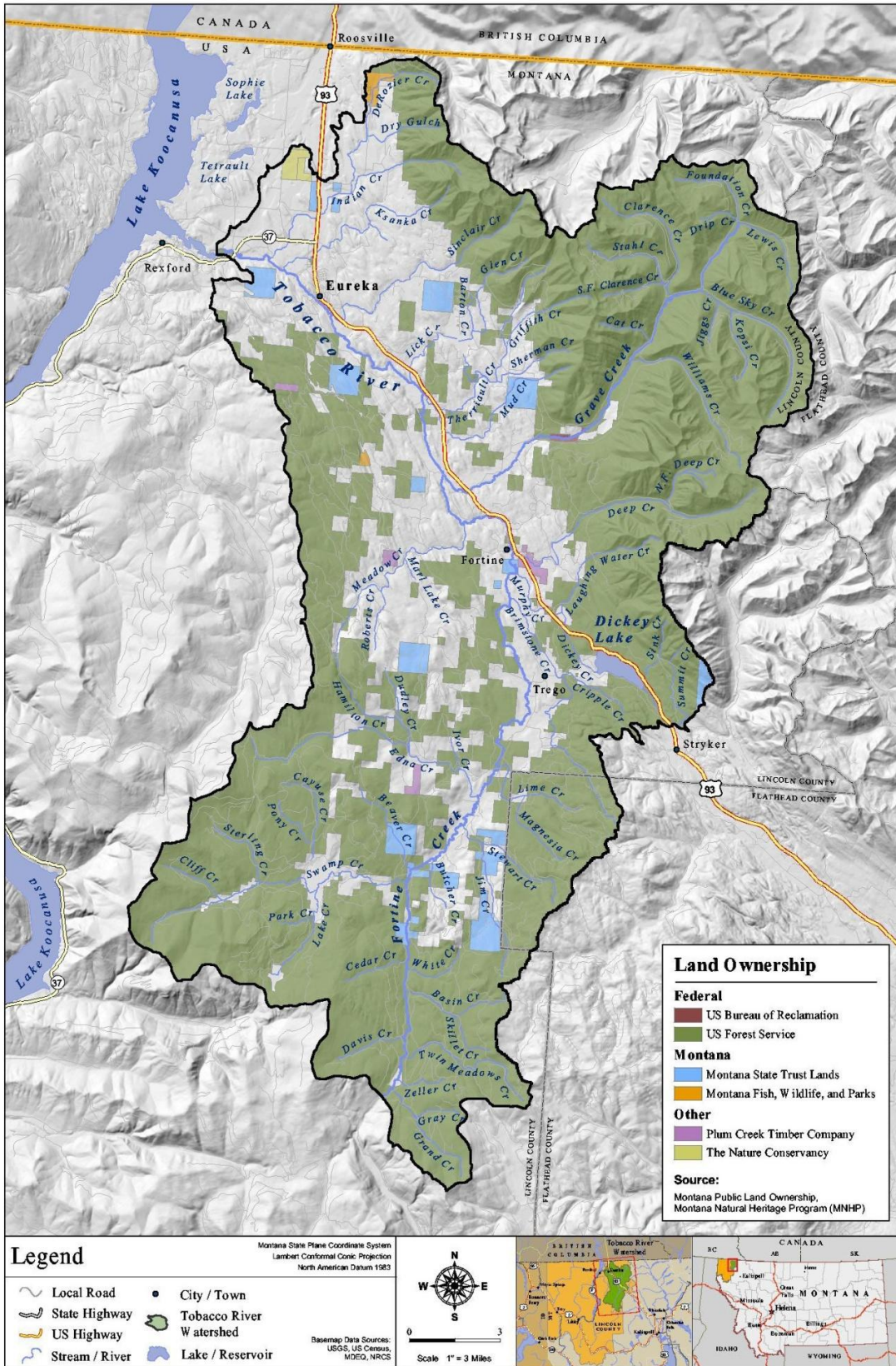
Map A-4. Soil Erodibility (K factors) in the Tobacco River watershed





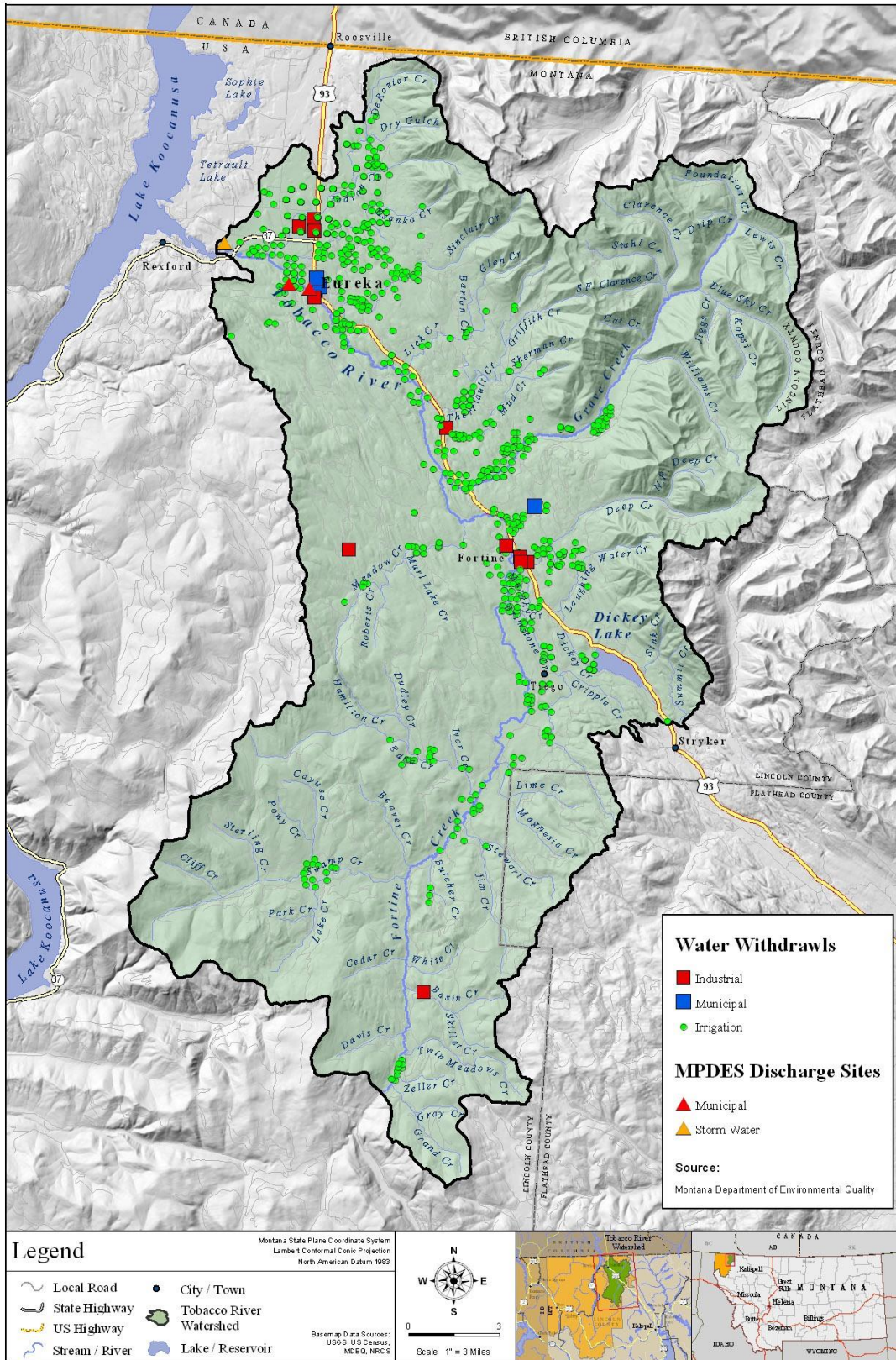
Map A-5. Types of land cover and land use in the Tobacco River watershed





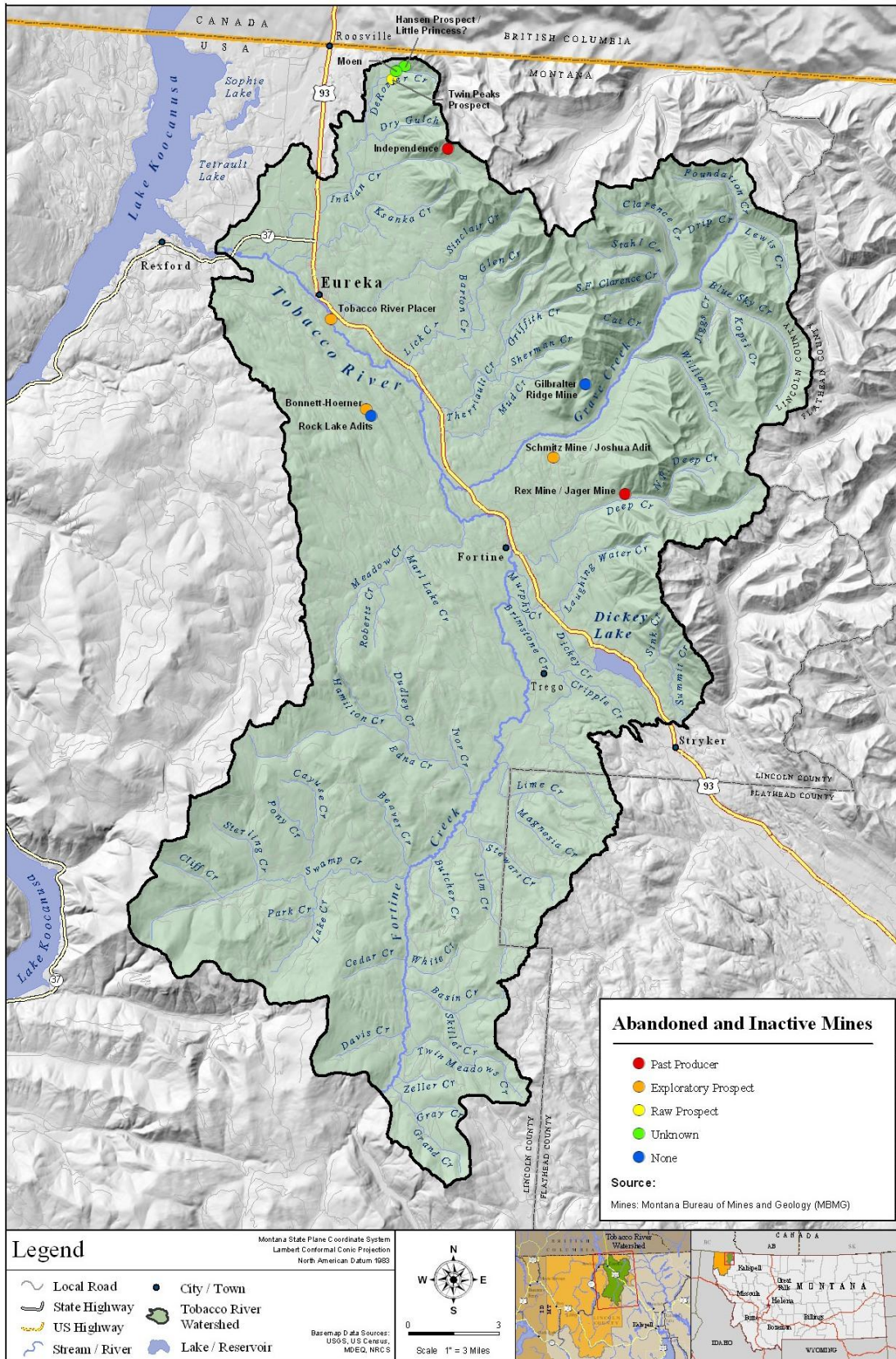
Map A-6. Land ownership in the Tobacco River watershed





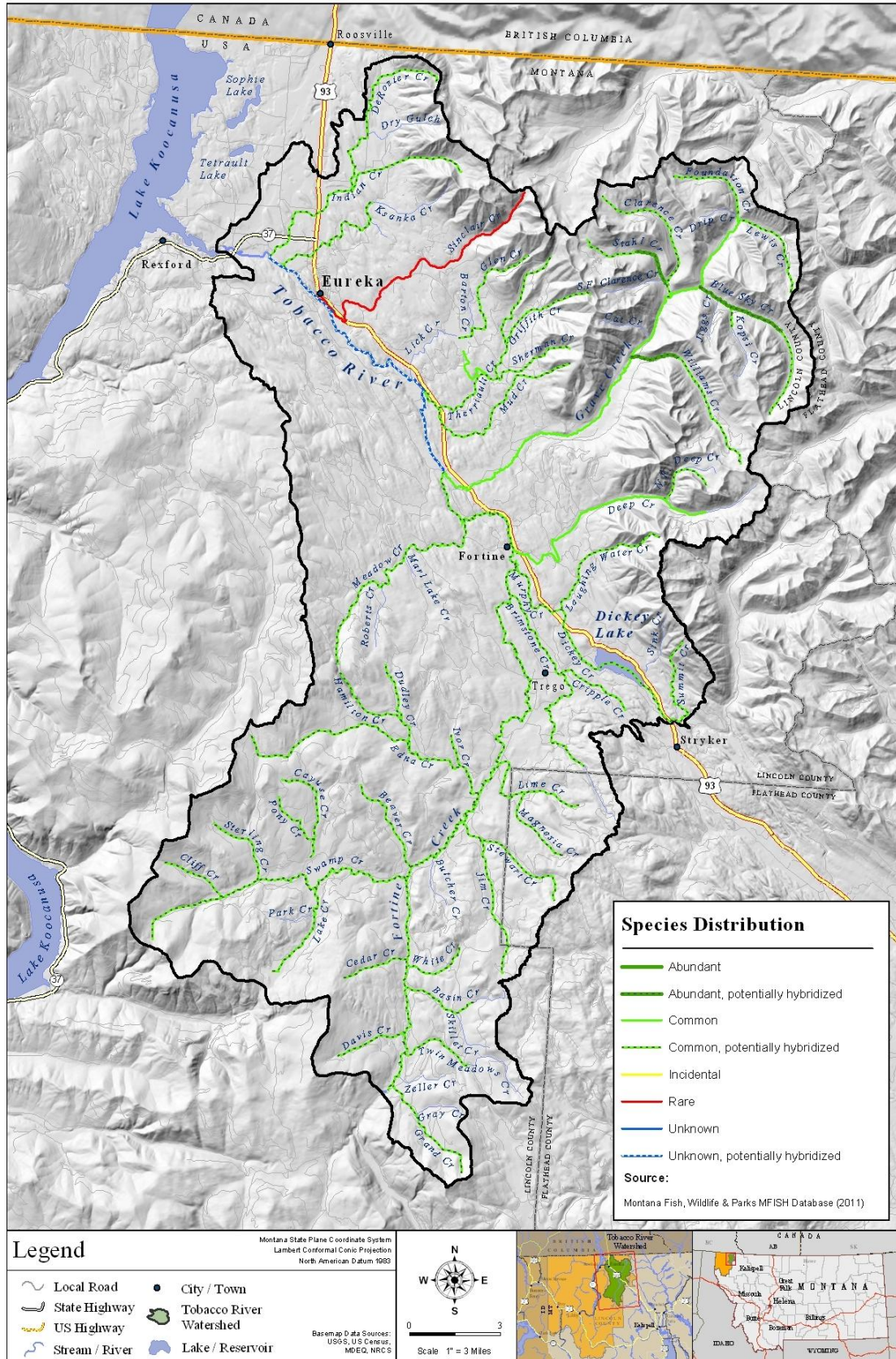
Map A-7. Locations of water withdrawals and permitted discharges in the Tobacco River watershed





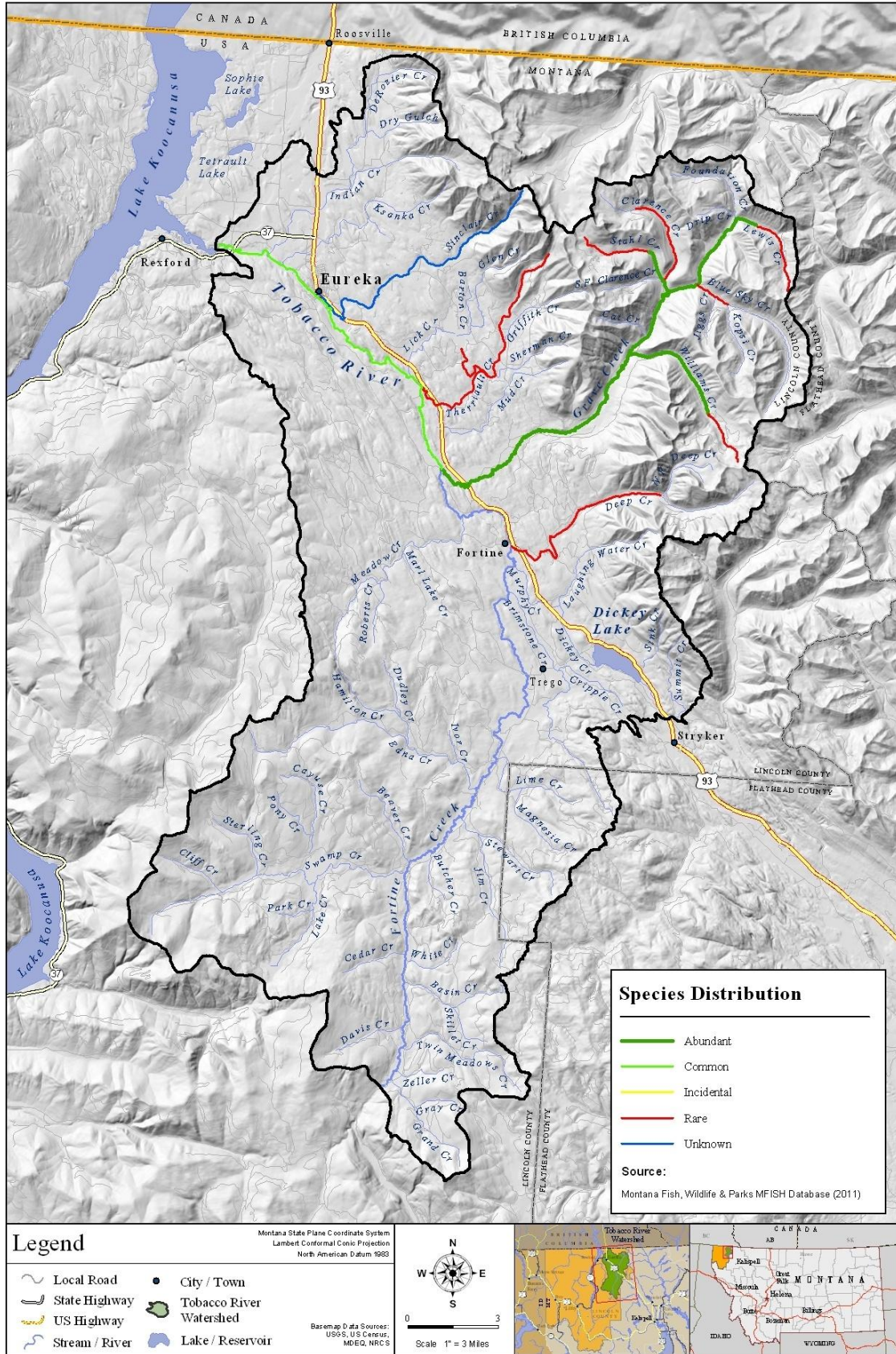
Map A-8. Locations of active and abandoned mines in the Tobacco River watershed





Map A-9: Distribution of westslope cutthroat trout in the Tobacco River watershed





Map A-10: Distribution of bull trout in the Tobacco River watershed