

APPENDIX A – TABLE OF WATERBODY IMPAIRMENTS AND PROJECT AREA DESCRIPTION MAPS

Table A-1. Status of Waterbody Impairments in the Thompson Area based on the 2012 Integrated Report	A-2
Figure A-1. Location of Thompson Project Area	A-4
Figure A-2. TMDL Planning Areas (TPAs) within the Thompson Project Area	A-5
Figure A-3. Elevation of the Thompson Project Area.....	A-6
Figure A-4. Slope of the Thompson Project Area.....	A-7
Figure A-5. Geologic units and abandoned mines of the Thompson Project Area.....	A-8
Figure A-6. Geologic rock types of the Thompson Project Area.....	A-9
Figure A-7. Soil orders of the Thompson Project Area	A-10
Figure A-8. Soil erodibility values of the Thompson Project Area	A-11
Figure A-9. Surface water hydrography of the Thompson Project Area	A-12
Figure A-10. Groundwater wells in the Thompson Project Area	A-13
Figure A-11. Precipitation averages in the Thompson Project Area.....	A-14
Figure A-12. Ecoregions of the Thompson Project Area.....	A-15
Figure A-13. Fire history of the Thompson Project Area	A-16
Figure A-14. Fish species of concern in the Thompson Project Area.....	A-17
Figure A-15. Population density of the Thompson Project Area	A-18
Figure A-16. Individual septic systems of the Thompson Project Area	A-19
Figure A-17. Land ownership of the Thompson Project Area.....	A-20
Figure A-18. Land cover of the Thompson Project Area.....	A-21

Table A-1. Status of Waterbody Impairments in the Thompson Area based on the 2012 Integrated Report

Waterbody & Location Description	Waterbody ID	Impairment Cause	TMDL Pollutant Category	Impairment Cause Status *
HENRY CREEK , headwaters to mouth (Clark Fork River)	MT76N003_170	Alteration in streamside or littoral vegetative covers	Not Applicable; Non-Pollutant	Addressed by a sediment TMDL contained in this document
		Low flow alterations	Not Applicable; Non-Pollutant	Addressed within document (Section 9); not linked to a TMDL
		Nitrogen (Total)	Nutrients	Not impaired based on updated assessment
		Phosphorus (Total)	Nutrients	Not impaired based on updated assessment
		Sedimentation / Siltation	Sediment	Sediment TMDL contained in this document
LAZIER CREEK , headwaters to mouth (Thompson River)	MT76N005_060	Alteration in streamside or littoral vegetative covers	Not Applicable; Non-Pollutant	Addressed by a sediment TMDL contained in this document
		Nitrate/Nitrite (Nitrite + Nitrate as N)	Nutrients	Addressed by TN TMDL contained in this document
		Nitrogen (Total)	Nutrients	TN TMDL contained in this document
		Phosphorus (Total)	Nutrients	TP TMDL contained in this document
		Sedimentation / Siltation	Sediment	Sediment TMDL contained in this document
LITTLE BITTERROOT RIVER , Hubbart Reservoir to Flathead Reservation Boundary	MT76L002_060	Chlorophyll- <i>a</i>	Not Applicable; Non-Pollutant	Addressed by TN and TP TMDL contained in this document
		Nitrate/Nitrite (Nitrite + Nitrate as N)	Nutrients	Addressed by TN TMDL contained in this document
		Nitrogen (Total)	Nutrients	TN TMDL contained in this document
		Phosphorus (Total)	Nutrients	TP TMDL contained in this document
		Other flow regime alterations	Not Applicable; Non-Pollutant	Addressed within document (Section 9); not linked to a TMDL
		Sedimentation / Siltation	Sediment	Sediment TMDL contained in this document
LITTLE THOMPSON RIVER , headwaters to mouth (Thompson River)	MT76N005_040	Alteration in streamside or littoral vegetative covers	Not Applicable; Non-Pollutant	Addressed by a sediment TMDL contained in this document
		Phosphorus (Total)	Nutrients	TP TMDL contained in this document
		Sedimentation / Siltation	Sediment	Sediment TMDL contained in this document
LYNCH CREEK , headwaters to mouth (Clark Fork River)	MT76N003_010	Alteration in streamside or littoral vegetative covers	Not Applicable; Non-Pollutant	Addressed by a sediment TMDL contained in this document
		Low flow alterations	Not Applicable; Non-Pollutant	Addressed within document (Section 9); not linked to a TMDL
		Nitrogen (Total)	Nutrients	TN TMDL contained in this document
		Phosphorus (Total)	Nutrients	TP TMDL contained in this document
		Sedimentation / Siltation	Sediment	Sediment TMDL contained in this document

Table A-1. Status of Waterbody Impairments in the Thompson Area based on the 2012 Integrated Report

Waterbody & Location Description	Waterbody ID	Impairment Cause	TMDL Pollutant Category	Impairment Cause Status *
		Temperature	Temperature	Temperature TMDL contained in this document
MCGINNIS CREEK, headwaters to mouth (Little Thompson River)	MT76N005_070	Fish-Passage Barrier	Not Applicable; Non-Pollutant	Addressed by sediment TMDL contained in this document
		Phosphorus (Total)	Nutrients	Not impaired based on updated assessment
		Sedimentation / Siltation	Sediment	Sediment TMDL contained in this document
McGREGOR CREEK, McGregor Lake to mouth (Thompson River)	MT76N005_030	Other flow regime alterations	Not Applicable; Non-Pollutant	Addressed within document (Section 9); not linked to a TMDL
		Phosphorus (Total)	Nutrients	Not impaired based on updated assessment
		Sedimentation / Siltation	Sediment	Sediment TMDL contained in this document
		Temperature	Temperature	Temperature TMDL contained in this document
SULLIVAN CREEK, headwaters to Flathead Indian Reservation	MT76L002_070	Alteration in streamside or littoral vegetative covers	Not Applicable; Non-Pollutant	Addressed by a sediment TMDL contained in this document
		Aluminum	Metals	Aluminum TMDL contained in this document
		Cadmium	Metals	Cadmium TMDL contained in this document
		Escherichia coli	Pathogens	Not impaired based on updated assessment
		Phosphorus (Total)	Nutrients	TP TMDL contained in this document
		pH	Metals	Addressed by copper TMDL as a surrogate
		Sedimentation / Siltation	Sediment	Sediment TMDL contained in this document
SWAMP CREEK, West Fork Swamp Creek to mouth (Clark Fork River)	MT76N003_160	Alteration in streamside or littoral vegetative covers	Not Applicable; Non-Pollutant	Addressed by a sediment TMDL contained in this document
		Nitrate/Nitrite (Nitrite + Nitrate as N)	Nutrients	Addressed by TN TMDL contained in this document
		Nitrogen (Total)	Nutrients	TN TMDL contained in this document
		Phosphorus (Total)	Nutrients	TP TMDL contained in this document
		Sedimentation / Siltation	Sediment	Sediment TMDL contained in this document

* TN = Total Nitrogen, TP = Total Phosphorus, NO₂ + NO₃ = Nitrite + Nitrate

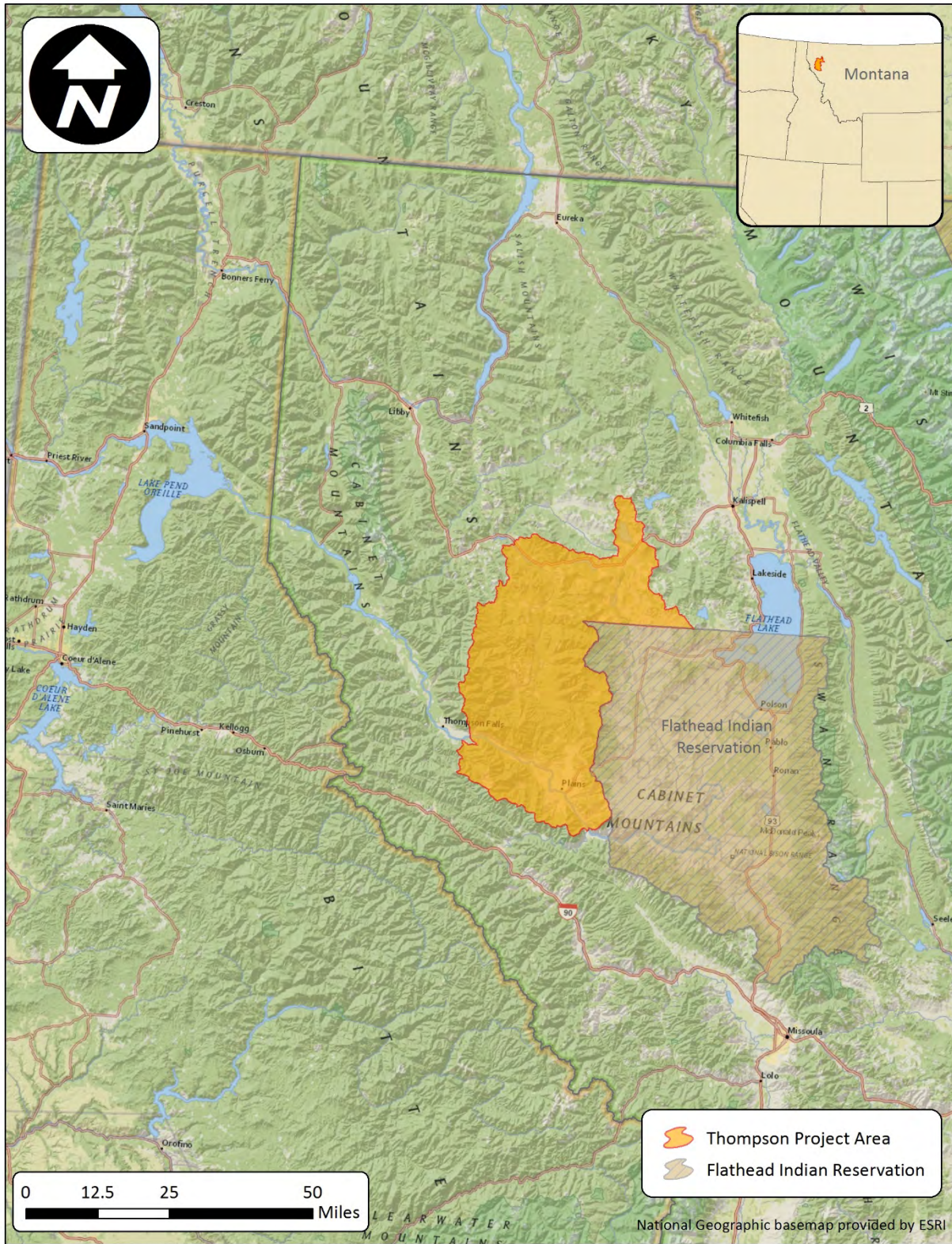


Figure A-1. Location of Thompson Project Area

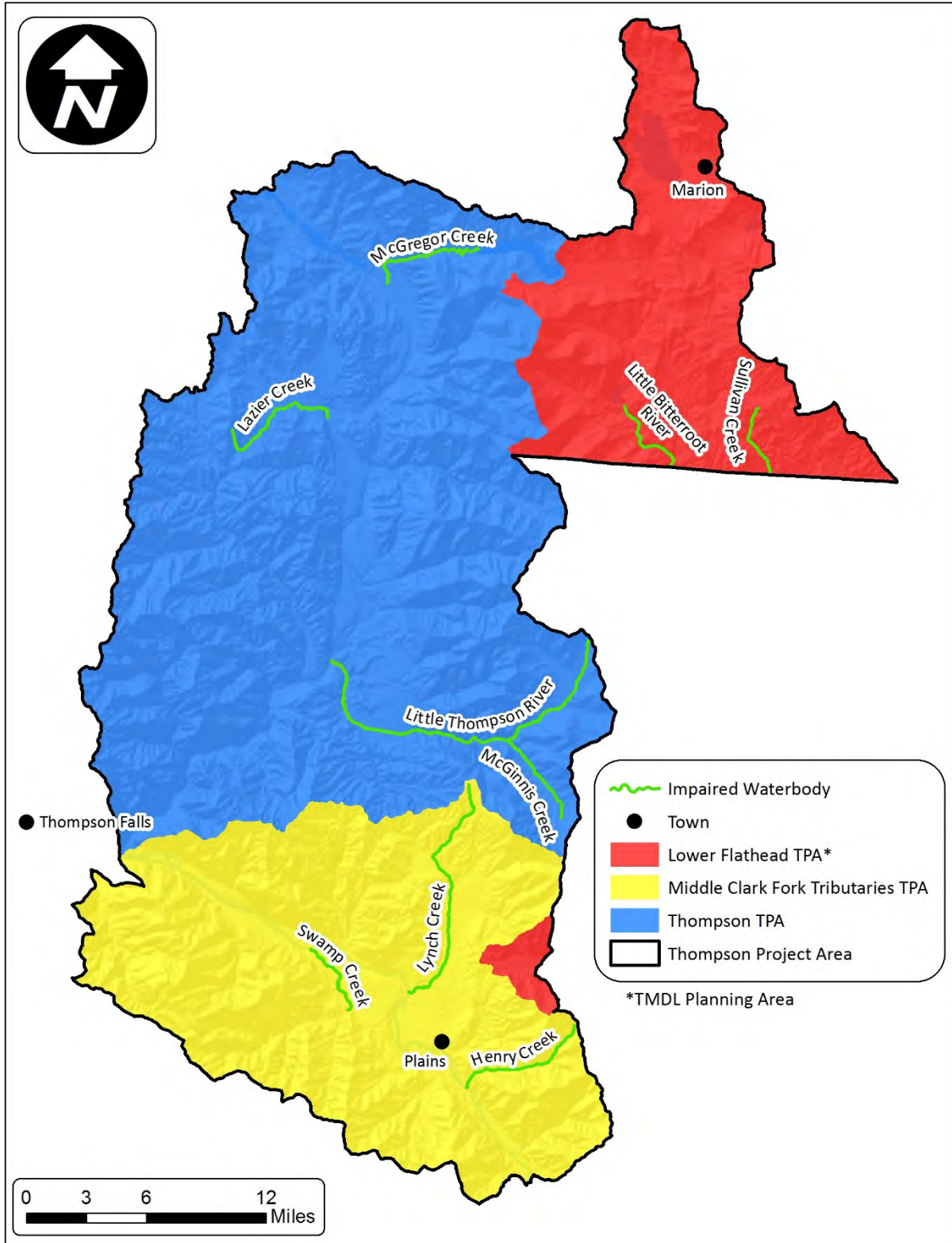


Figure A-2. TMDL Planning Areas (TPAs) within the Thompson Project Area

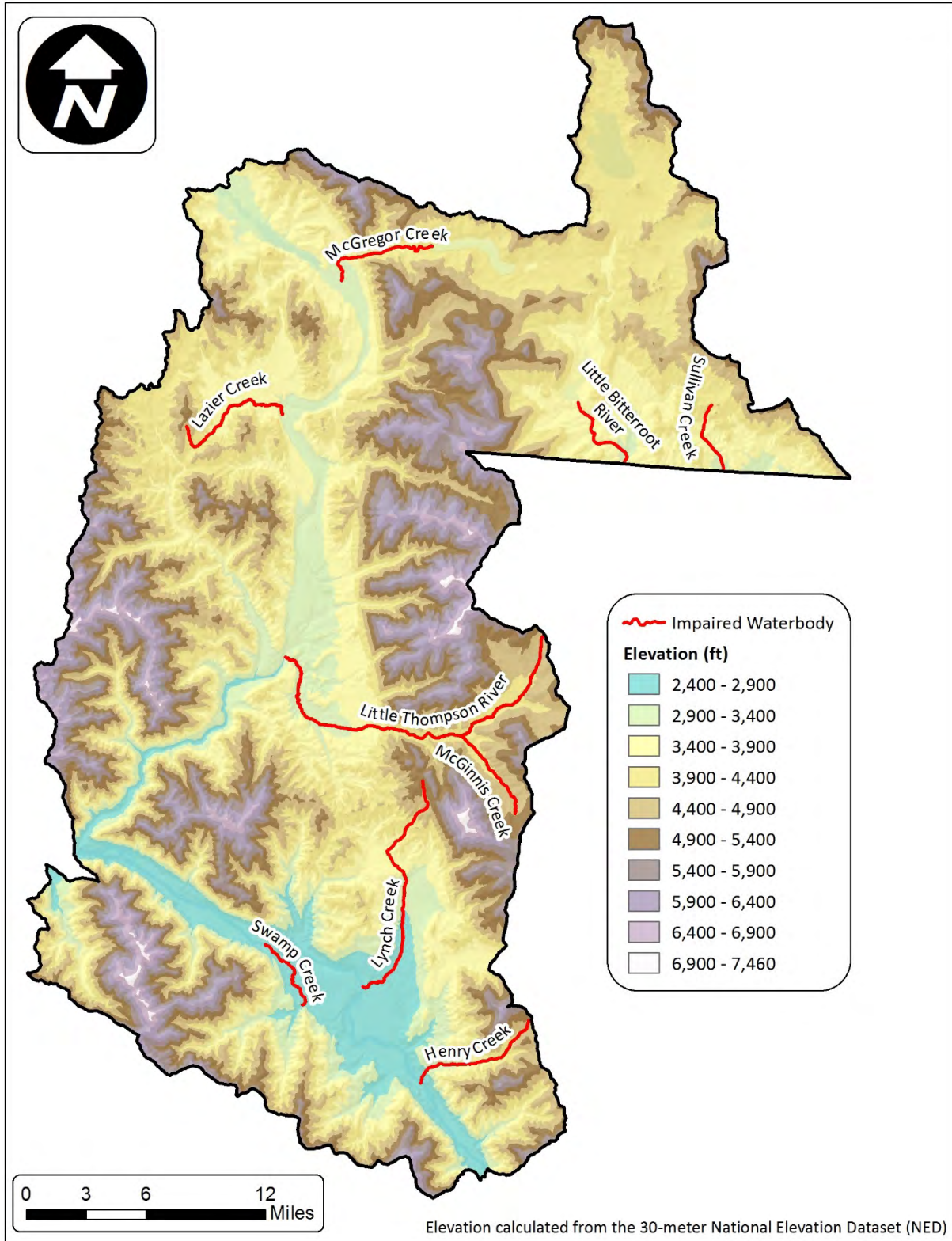


Figure A-3. Elevation of the Thompson Project Area

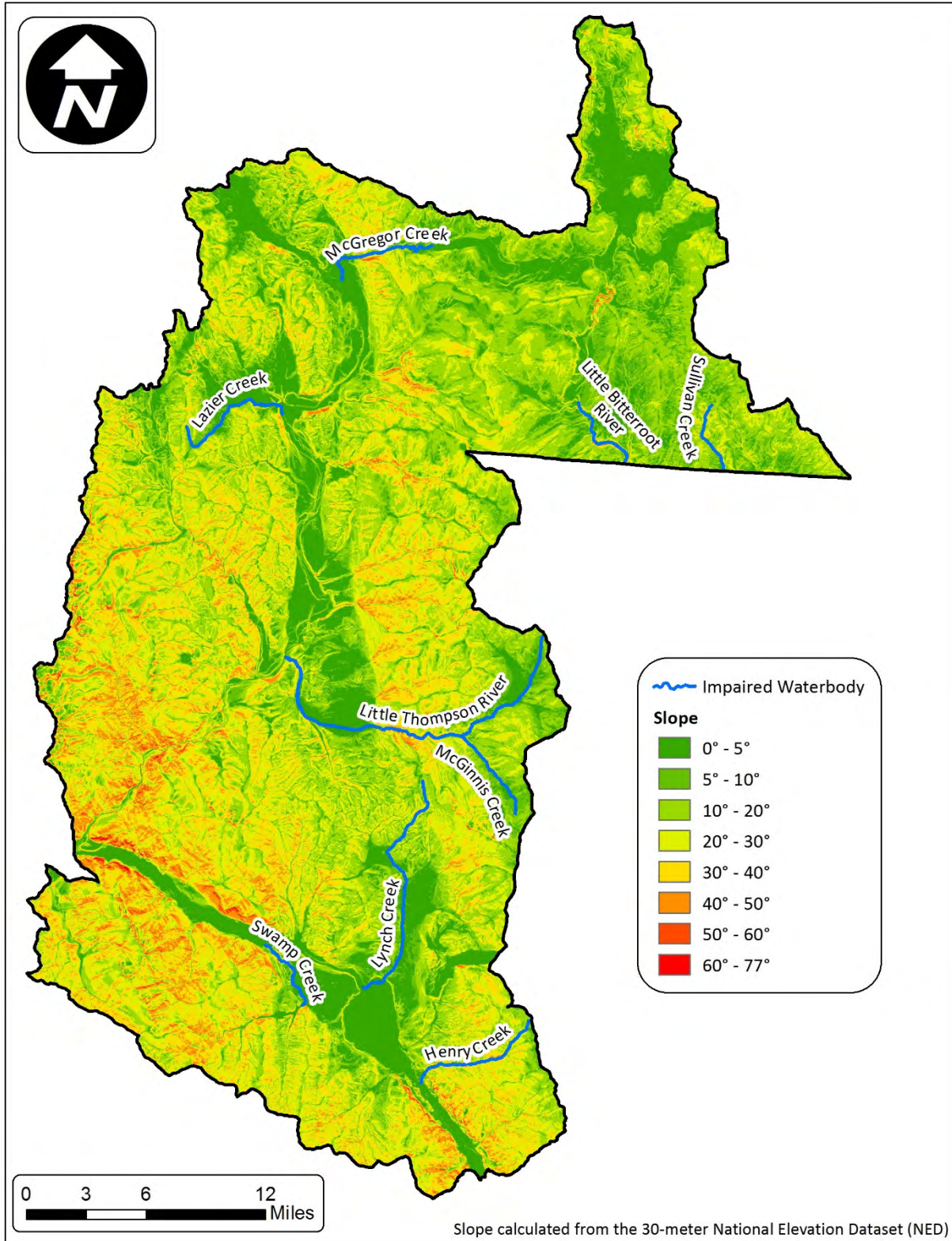


Figure A-4. Slope of the Thompson Project Area

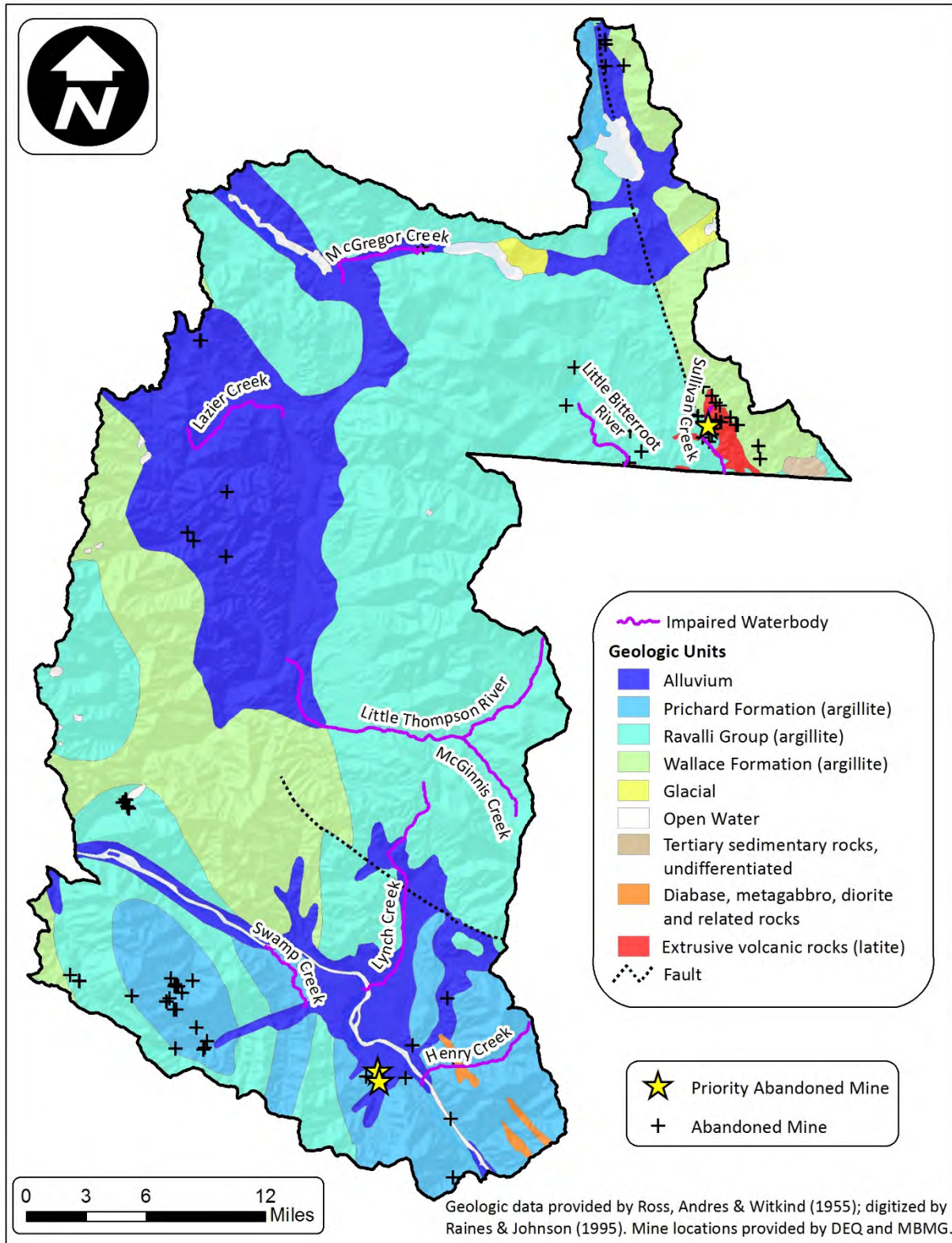


Figure A-5. Geologic units and abandoned mines of the Thompson Project Area

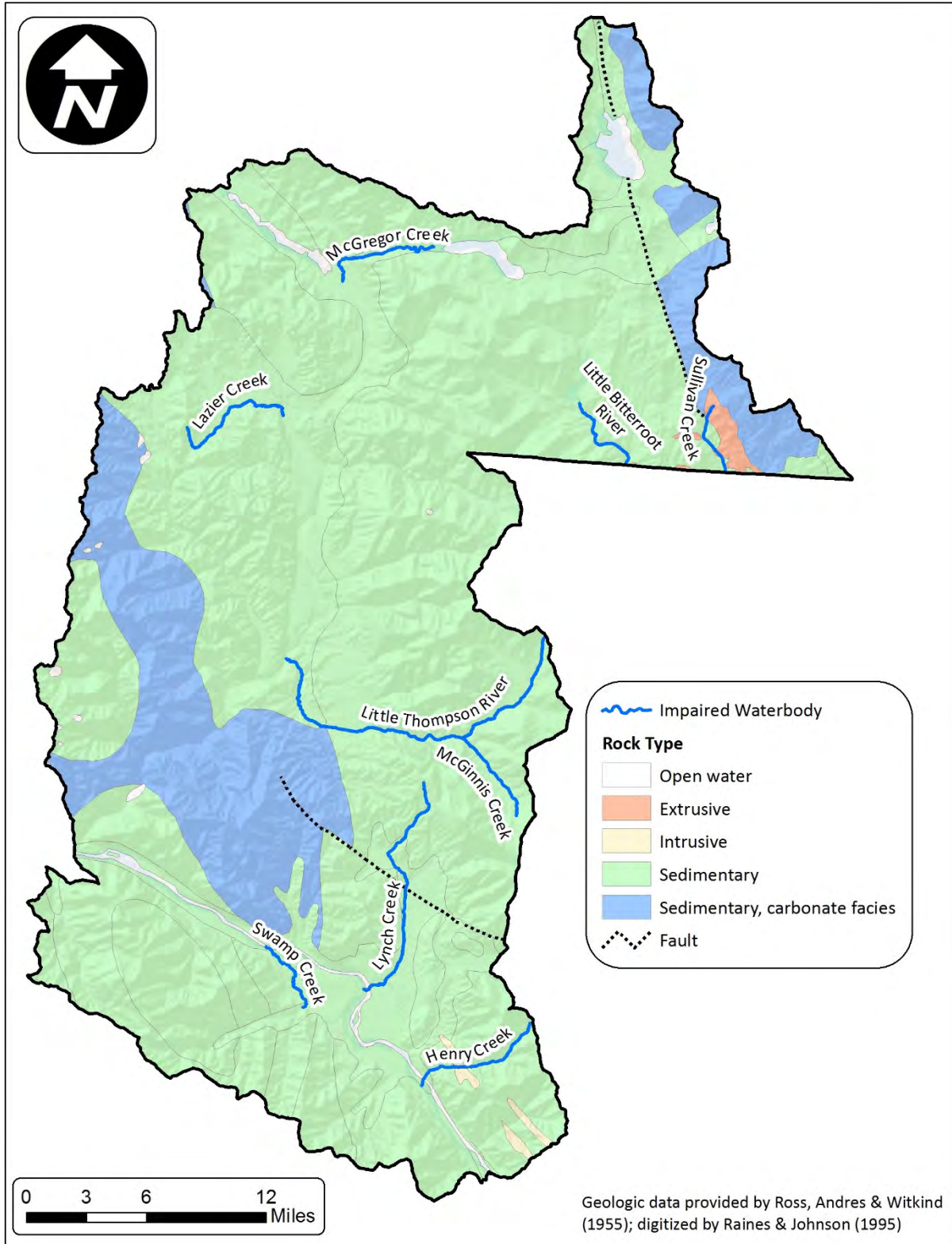


Figure A-6. Geologic rock types of the Thompson Project Area

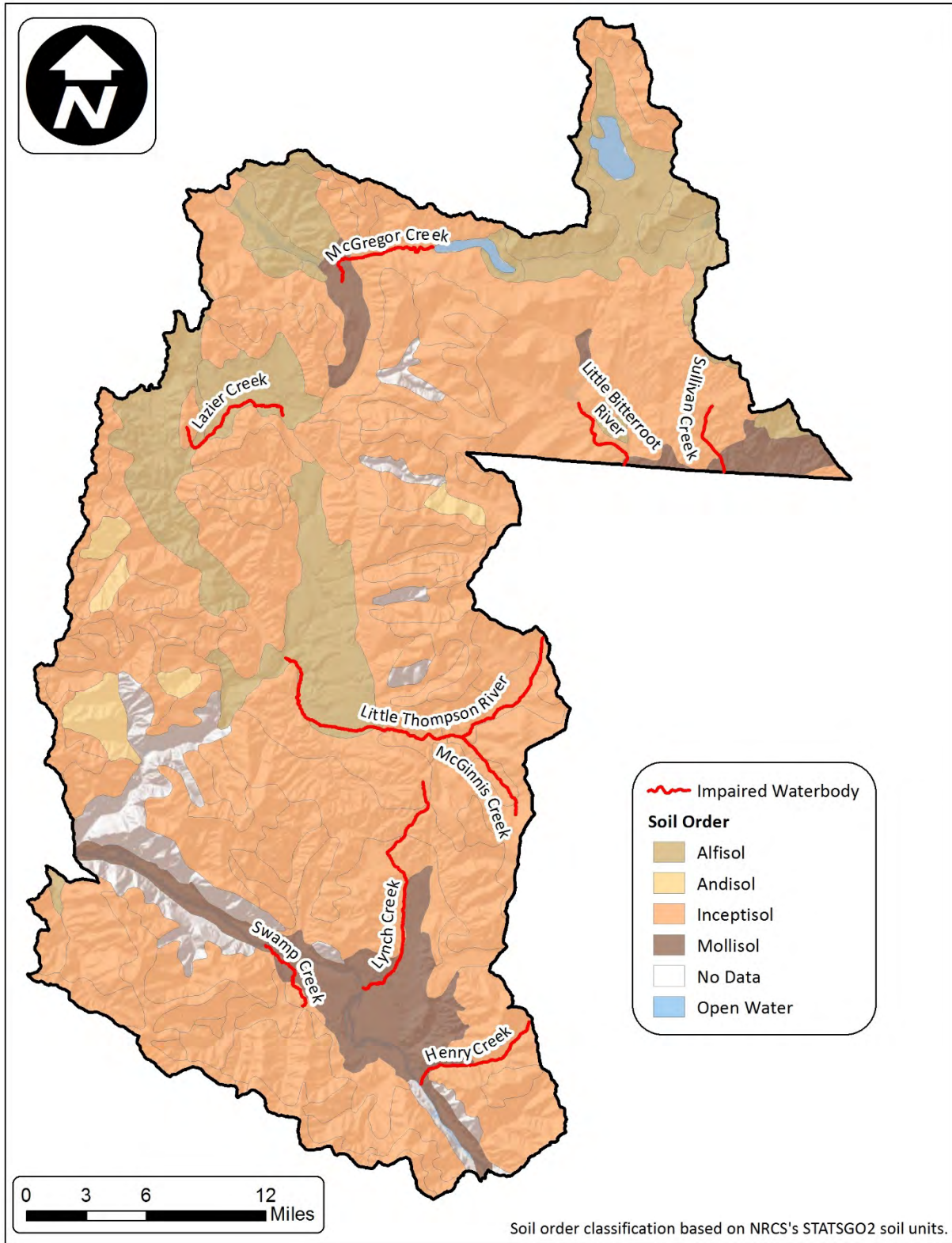


Figure A-7. Soil orders of the Thompson Project Area

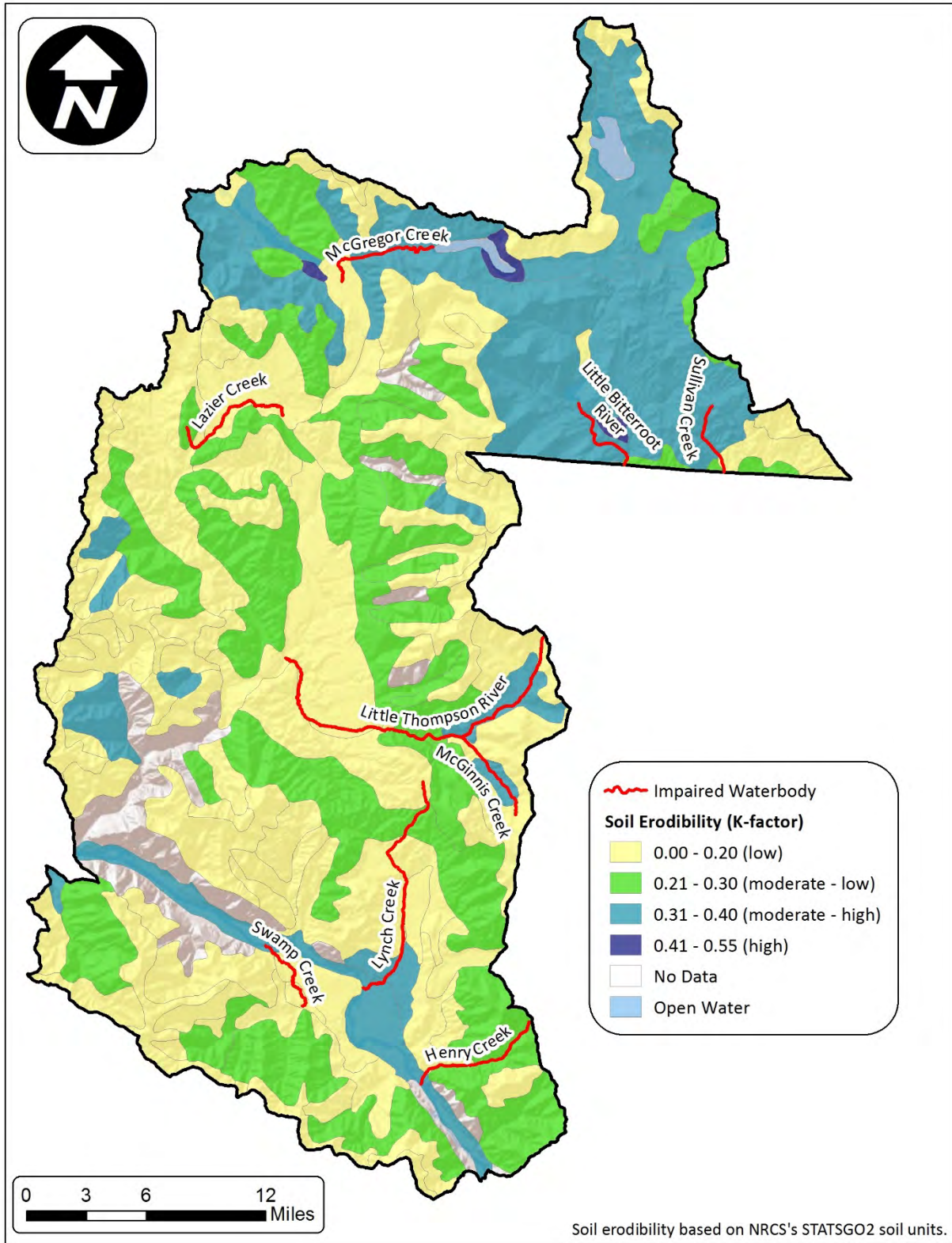


Figure A-8. Soil erodibility values of the Thompson Project Area

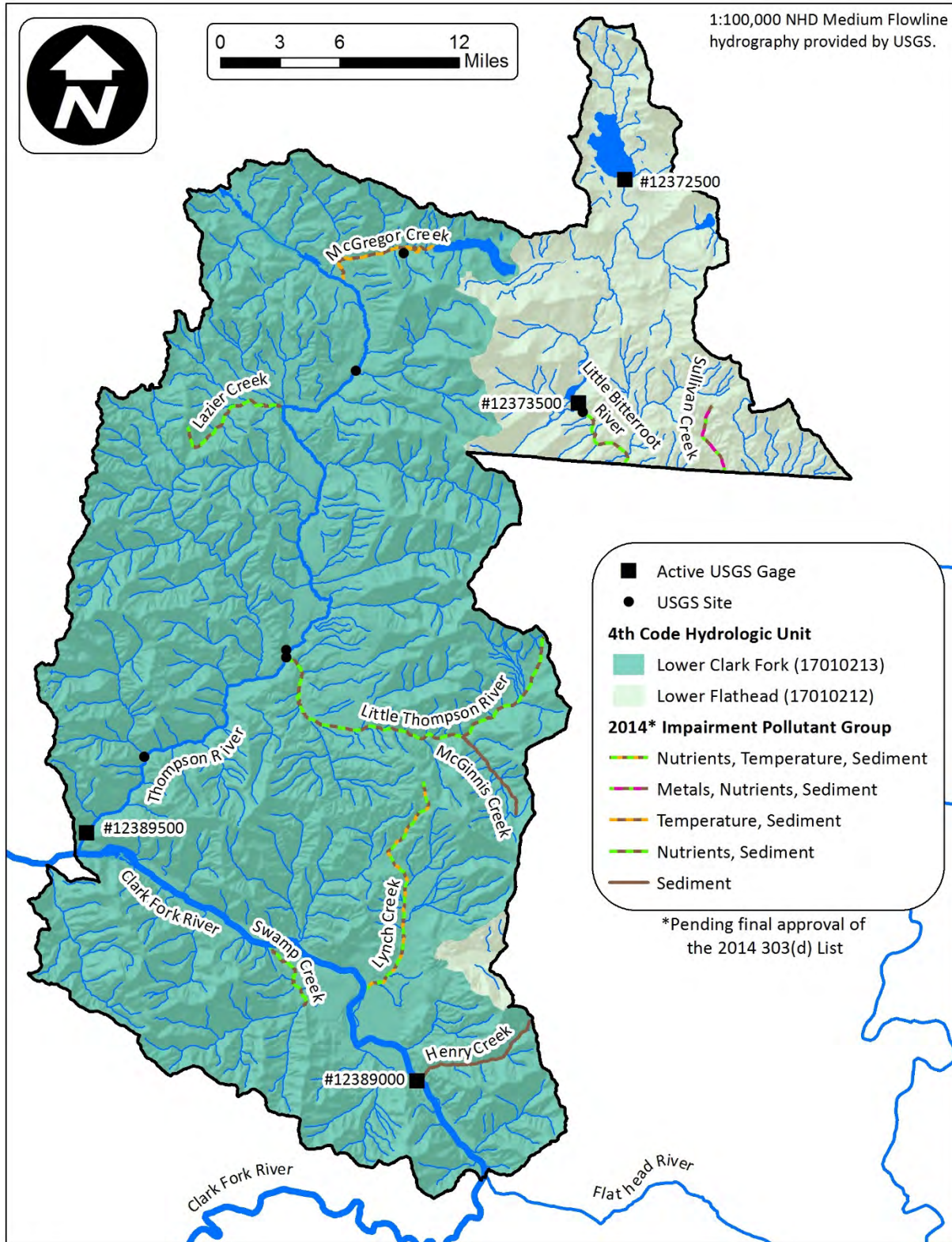


Figure A-9. Surface water hydrography of the Thompson Project Area

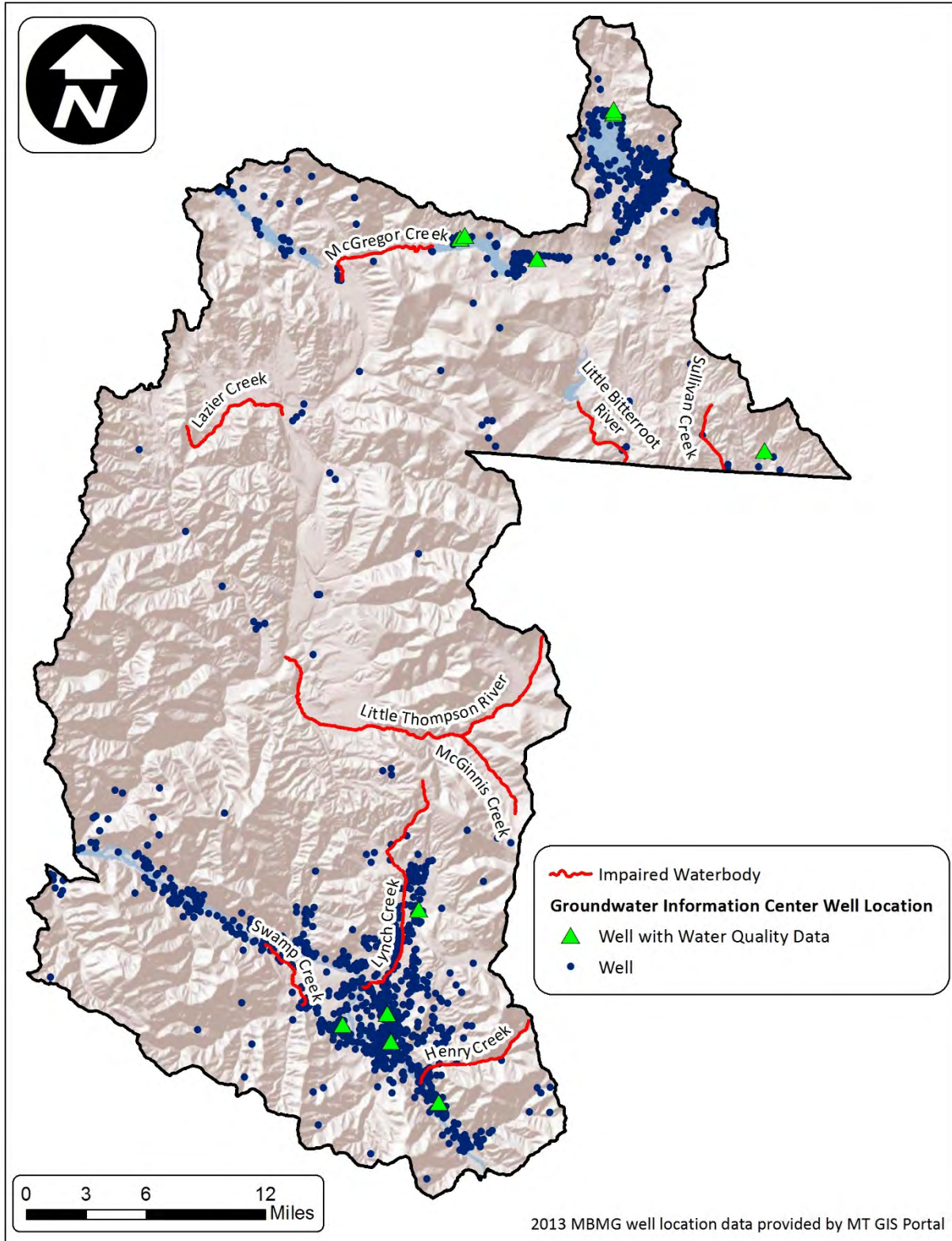


Figure A-10. Groundwater wells in the Thompson Project Area

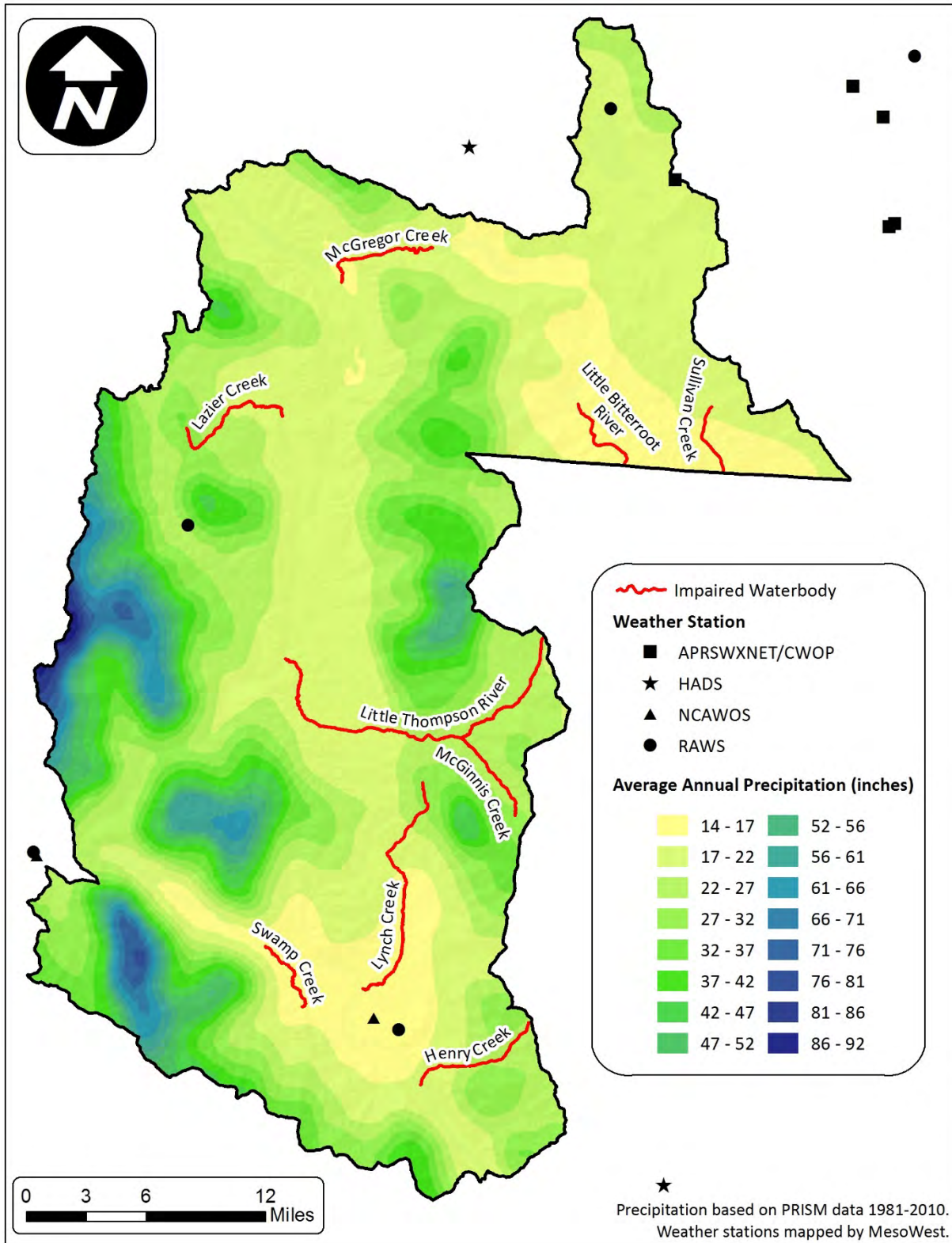


Figure A-11. Precipitation averages in the Thompson Project Area

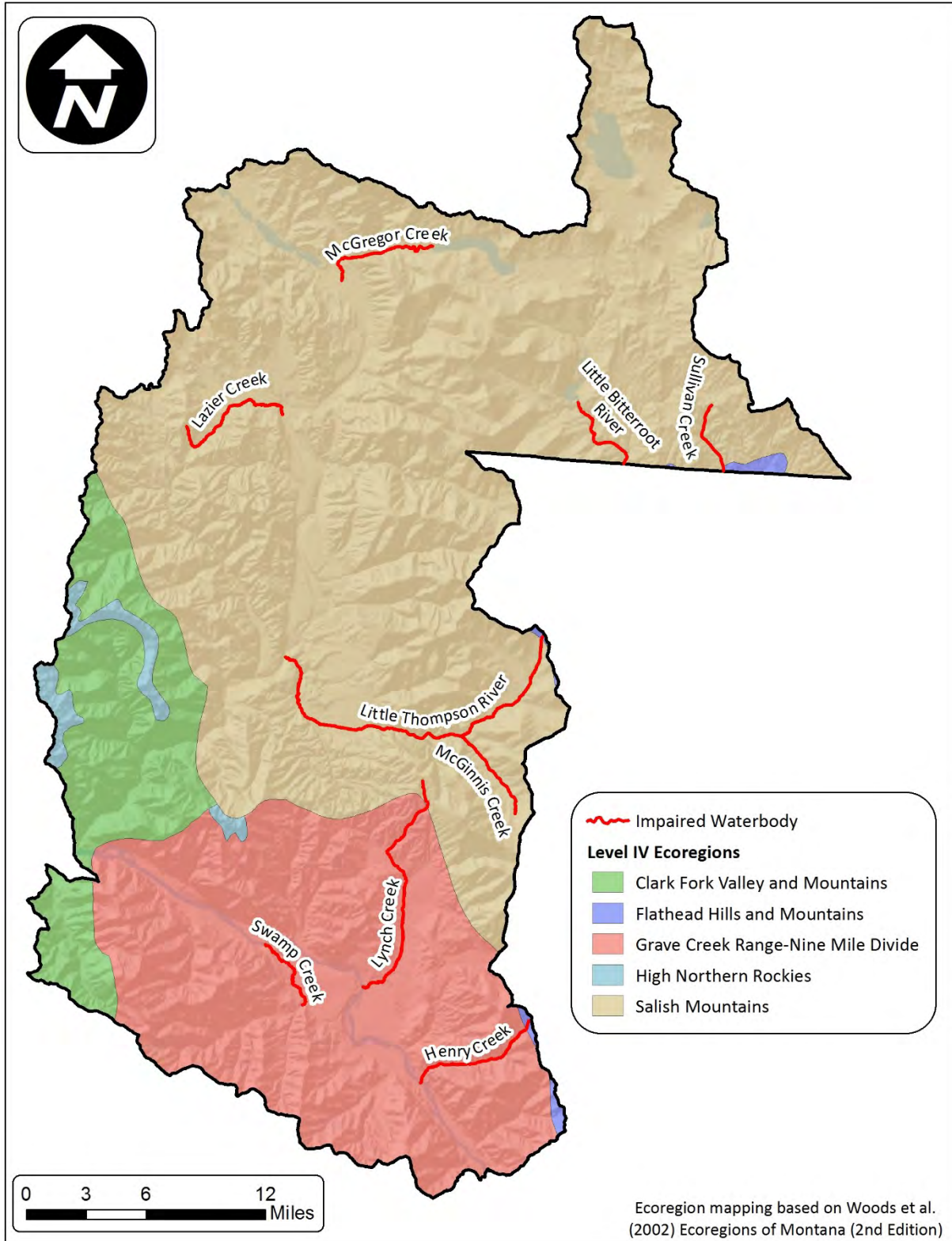


Figure A-12. Ecoregions of the Thompson Project Area

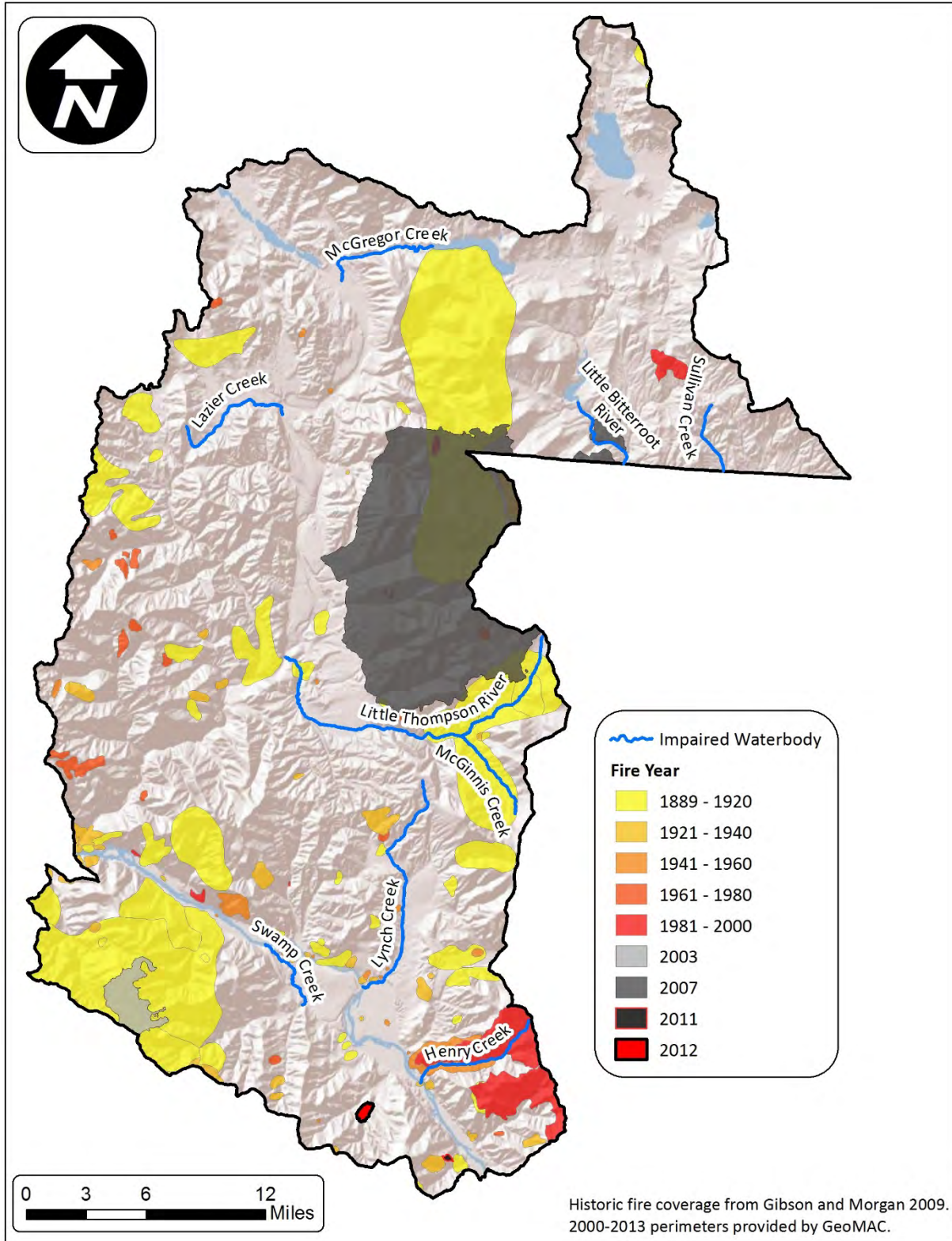


Figure A-13. Fire history of the Thompson Project Area

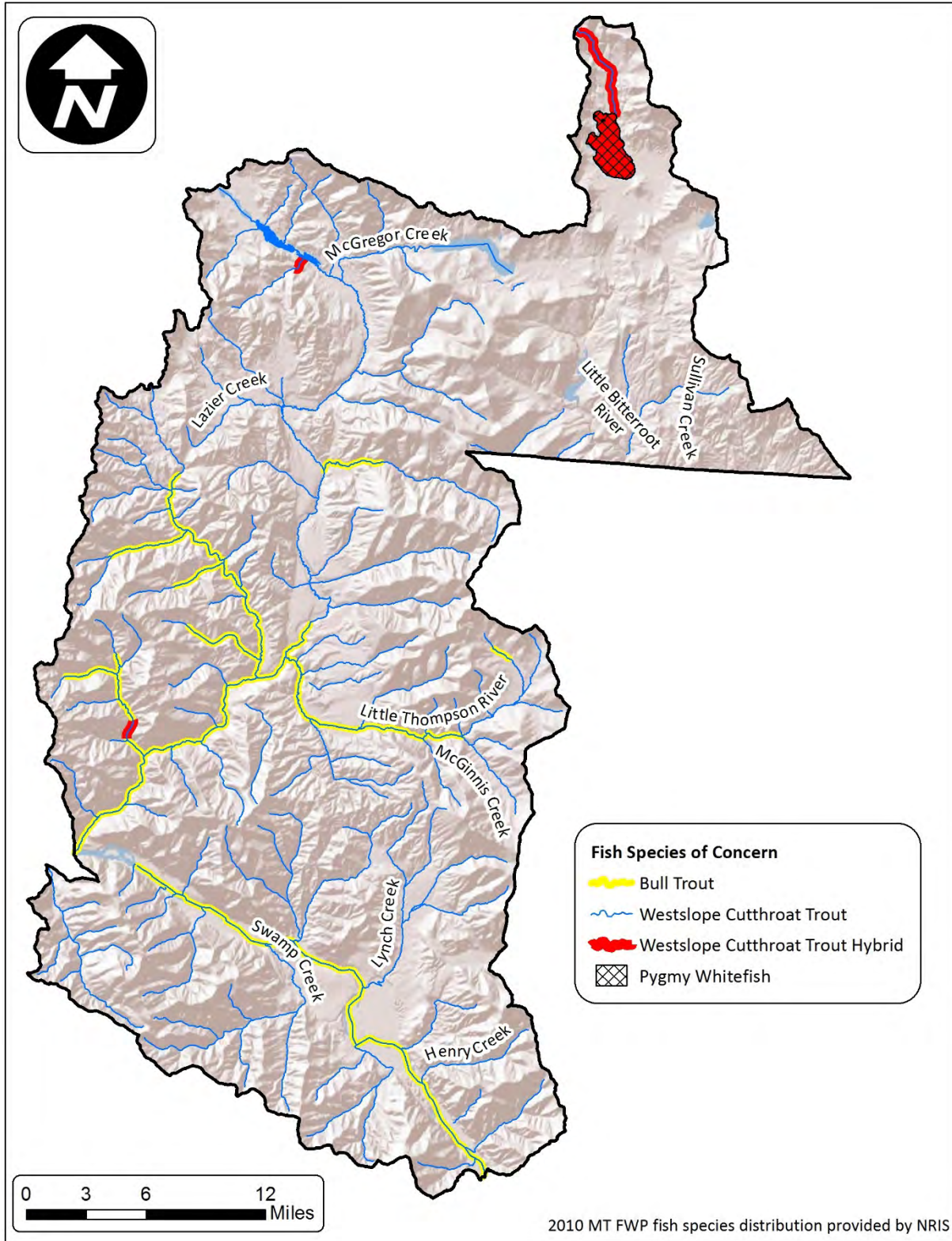


Figure A-14. Fish species of concern in the Thompson Project Area

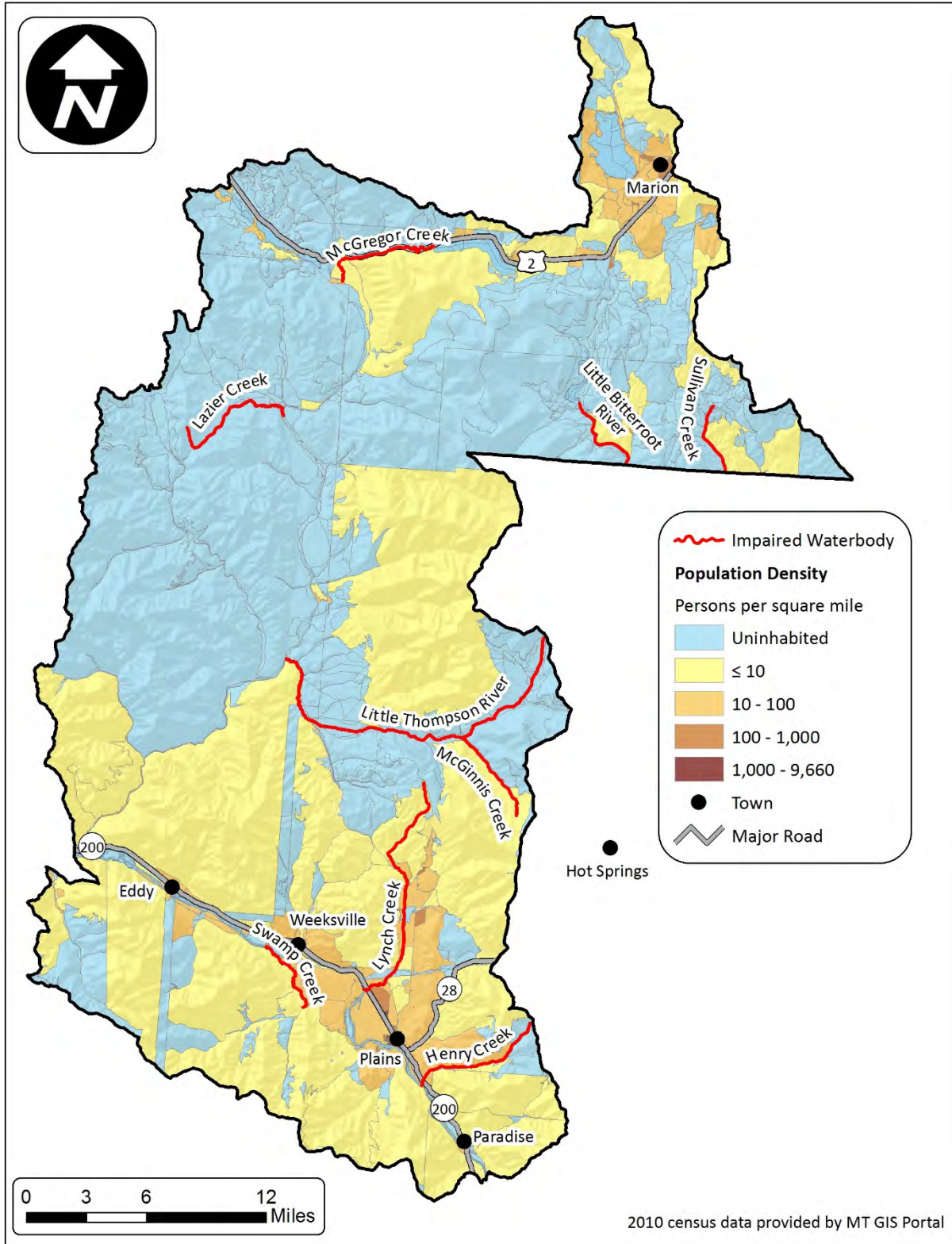


Figure A-15. Population density of the Thompson Project Area

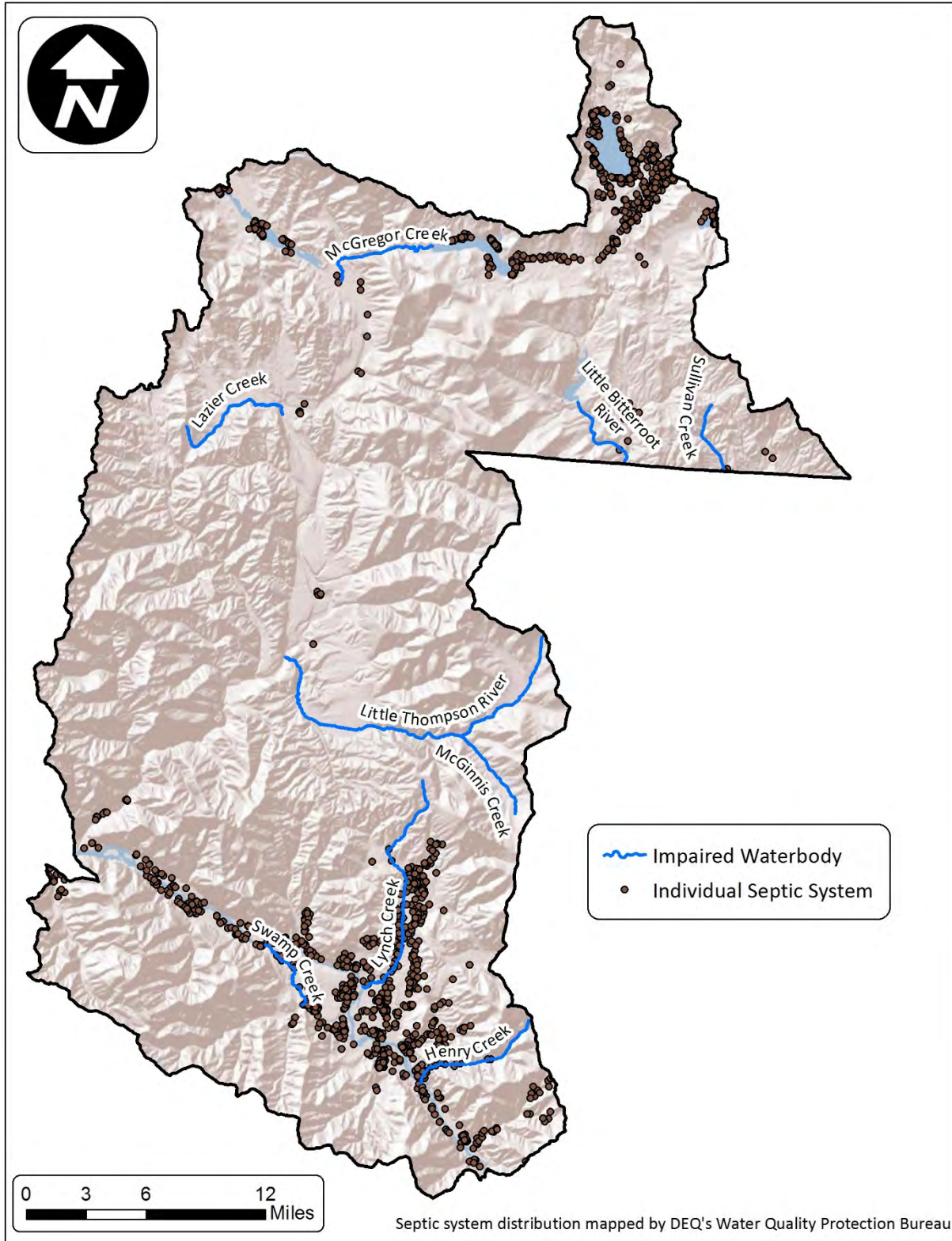


Figure A-16. Individual septic systems of the Thompson Project Area

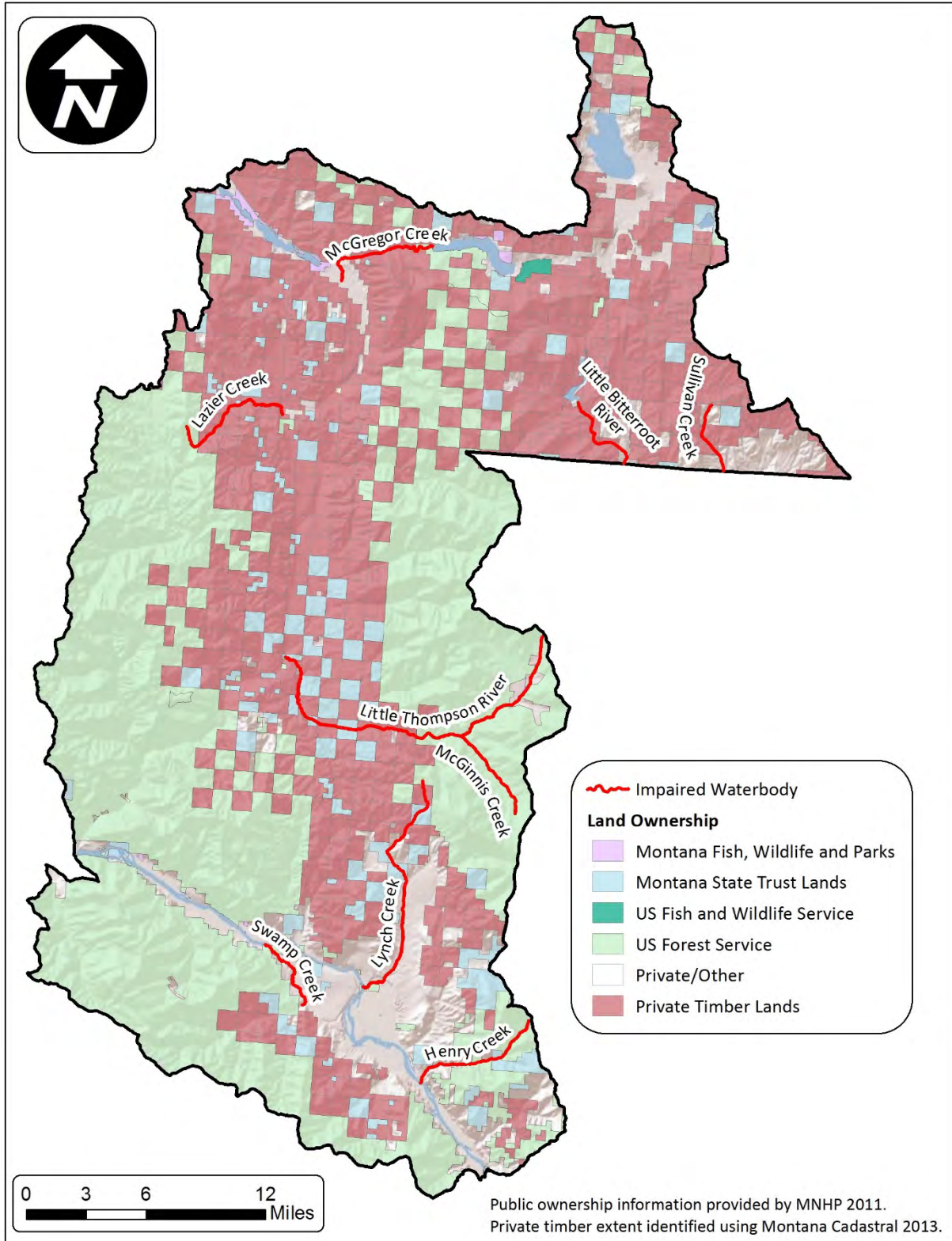


Figure A-17. Land ownership of the Thompson Project Area

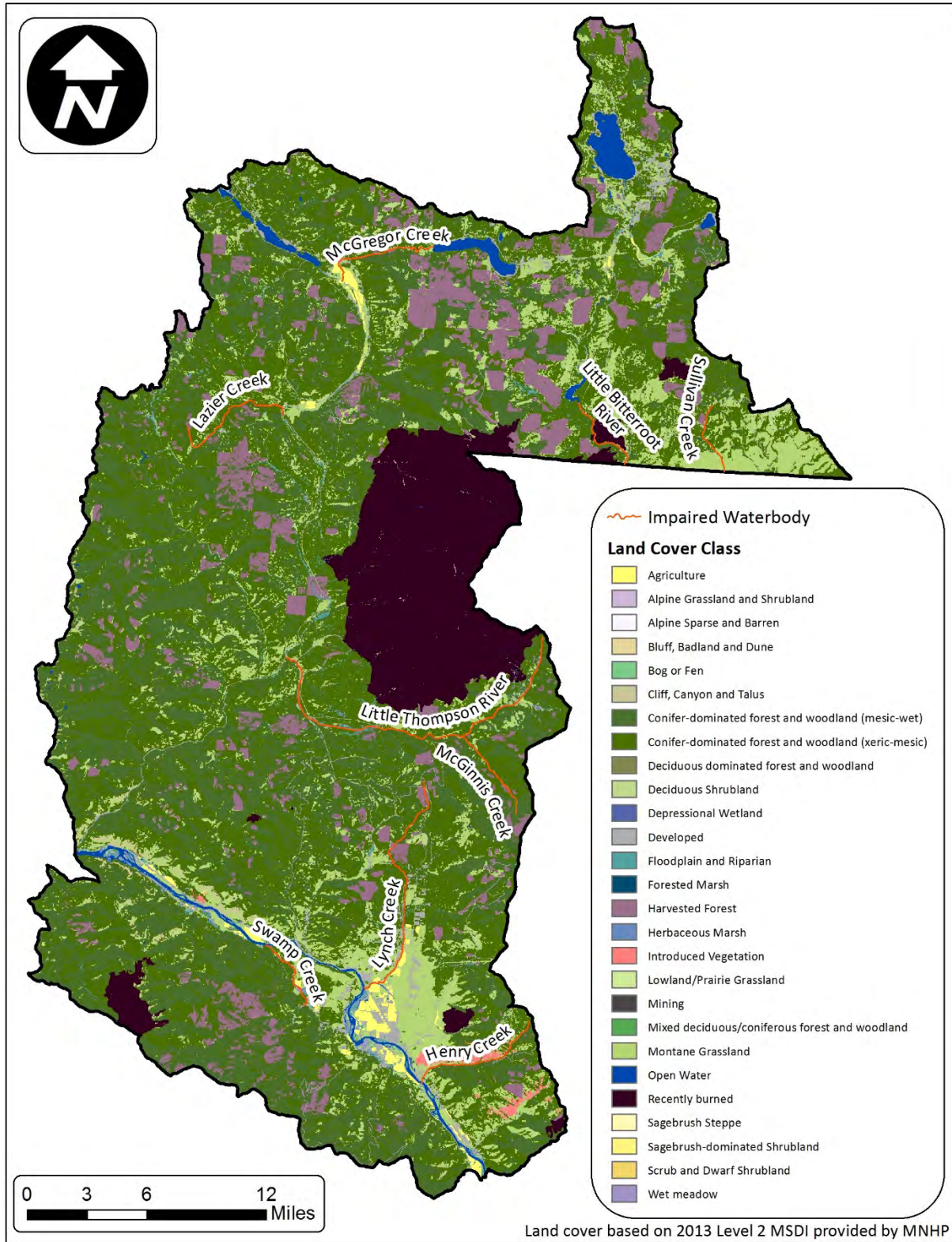


Figure A-18. Land cover of the Thompson Project Area

