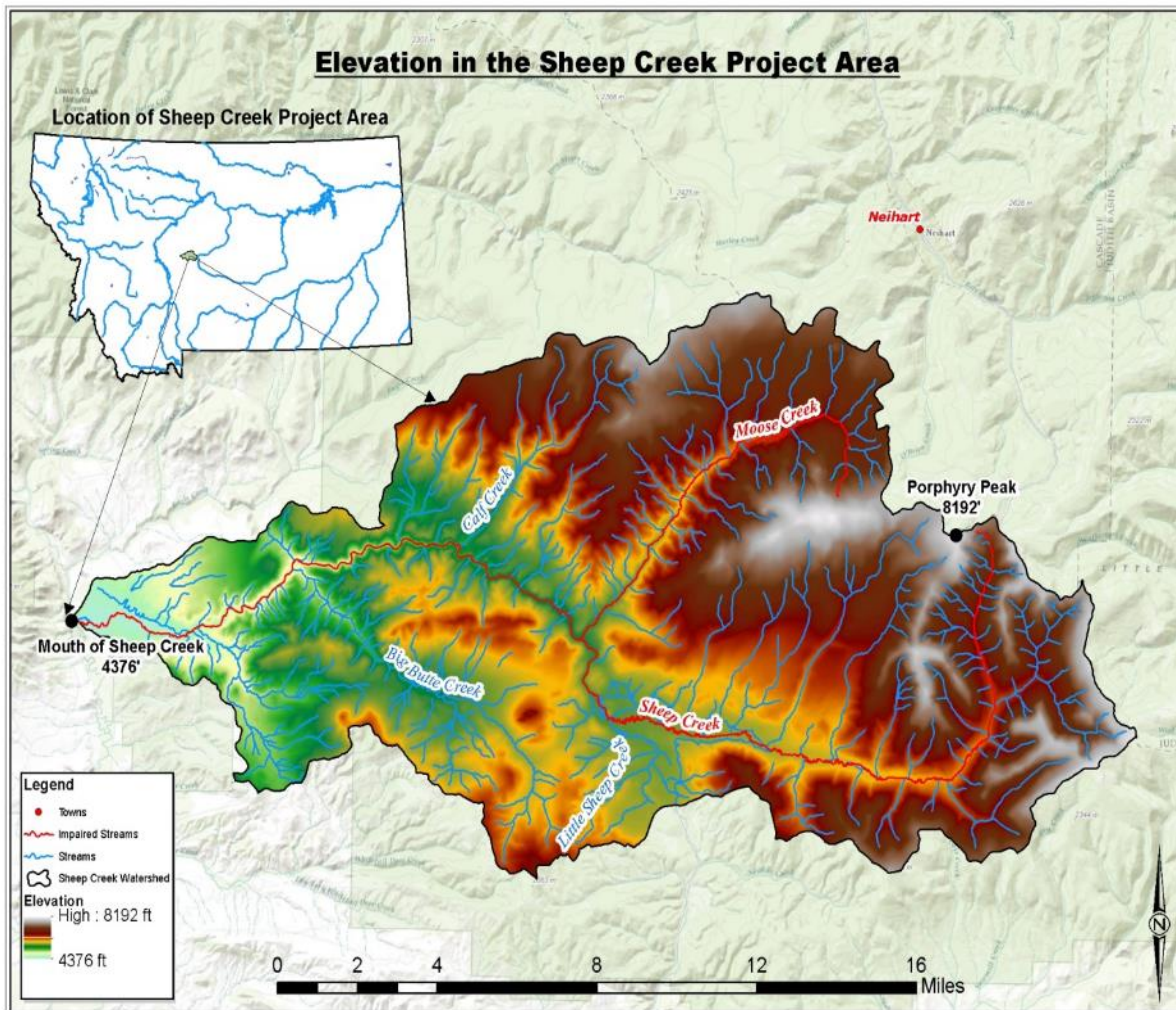


## **APPENDIX A – SHEEP CREEK TMDL PROJECT AREA DESCRIPTION MAPS**

Figure A-1. Topography of the Sheep Creek TMDL Project Area .....A-2  
Figure A-2. Average Annual Precipitation in the Sheep Creek TMDL Project Area.....A-3  
Figure A-3. Hydrography of the Sheep Creek TMDL Project Area .....A-4  
Figure A-4. Generalized Geology of the Sheep Creek TMDL Project Area .....A-5  
Figure A-5. Soil Erodibility of the Sheep Creek TMDL Project Area.....A-6  
Figure A-6. Level IV Ecoregions in the Sheep Creek TMDL Project Area .....A-7  
Figure A-7. Land Cover in the Sheep Creek TMDL Project Area.....A-8  
Figure A-8. Fire History of the Sheep Creek TMDL Project Area.....A-9  
Figure A-9. Species of Concern Distribution in the Sheep Creek TMDL Project Area .....A-10  
Figure A-10. Population Density of the Sheep Creek TMDL Project Area .....A-11  
Figure A-11. Land Management of the Sheep Creek TMDL Project Area .....A-12  
Figure A-12. Agricultural Use and Grazing Allotments in the Sheep Creek TMDL Project Area .....A-13  
Figure A-13. Road Networks in the Sheep Creek TMDL Project Area .....A-14

This appendix contains **Figures A-1** through **A-13**, associated with the Sheep Creek TMDL Project Area Description in Section 2.0 of the main document. These figures were developed to aid the reader in seeing the physical, ecological and social aspects of the Sheep Creek watershed.

It is important to note that the figures referenced in this appendix show Sheep Creek and several of its tributaries. Sheep Creek and Moose Creek are the only waterbodies that have been identified as being impaired for aluminum in the Sheep Creek watershed. The maps created for this appendix show both Sheep Creek and Moose Creek as impaired, however only the Sheep Creek impairment for aluminum is addressed in the TMDL document and all the maps in this appendix pertain solely to the Sheep Creek aluminum impairment.



**Figure A-1. Topography of the Sheep Creek TMDL Project Area**

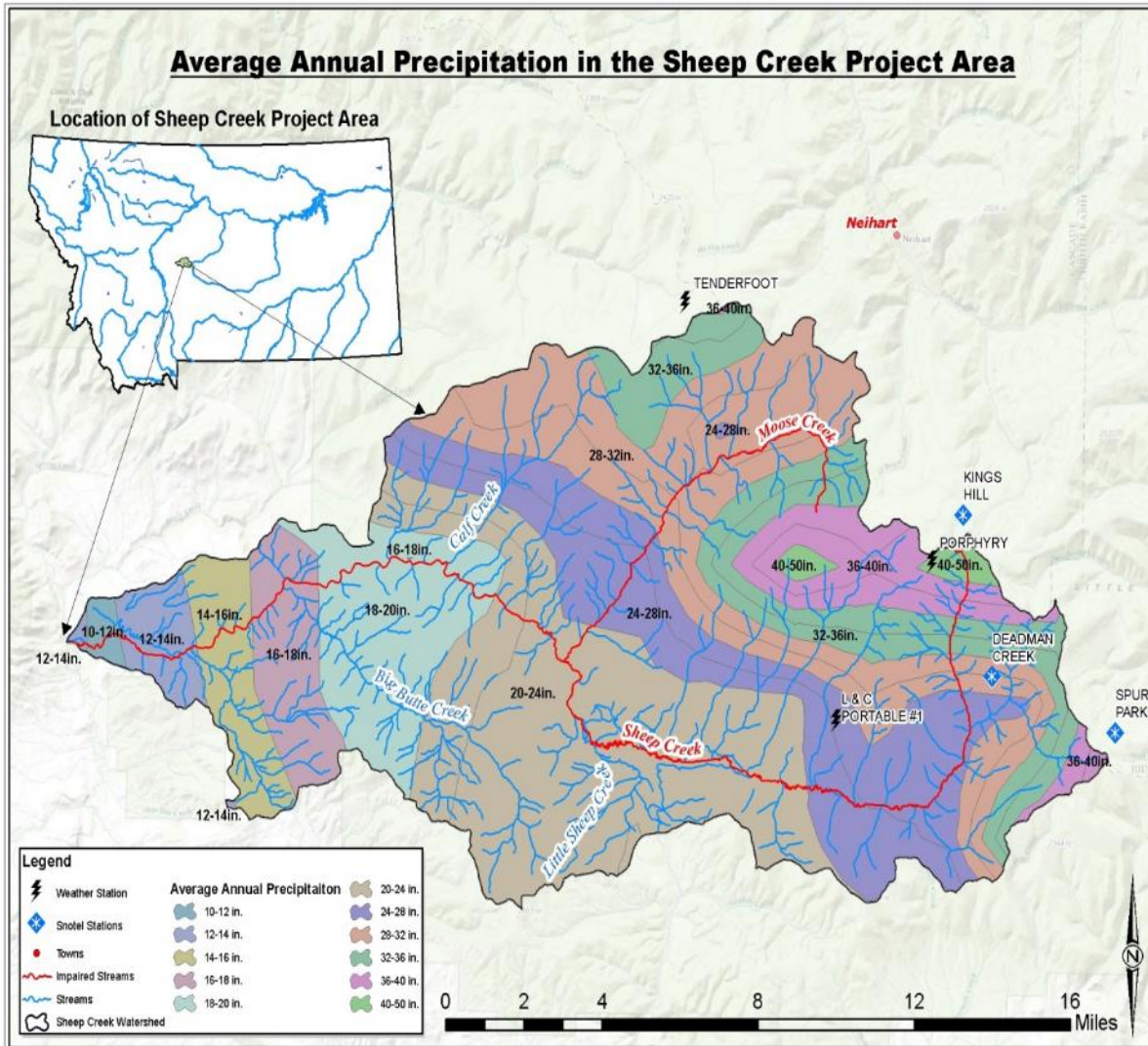


Figure A-2. Average Annual Precipitation in the Sheep Creek TMDL Project Area

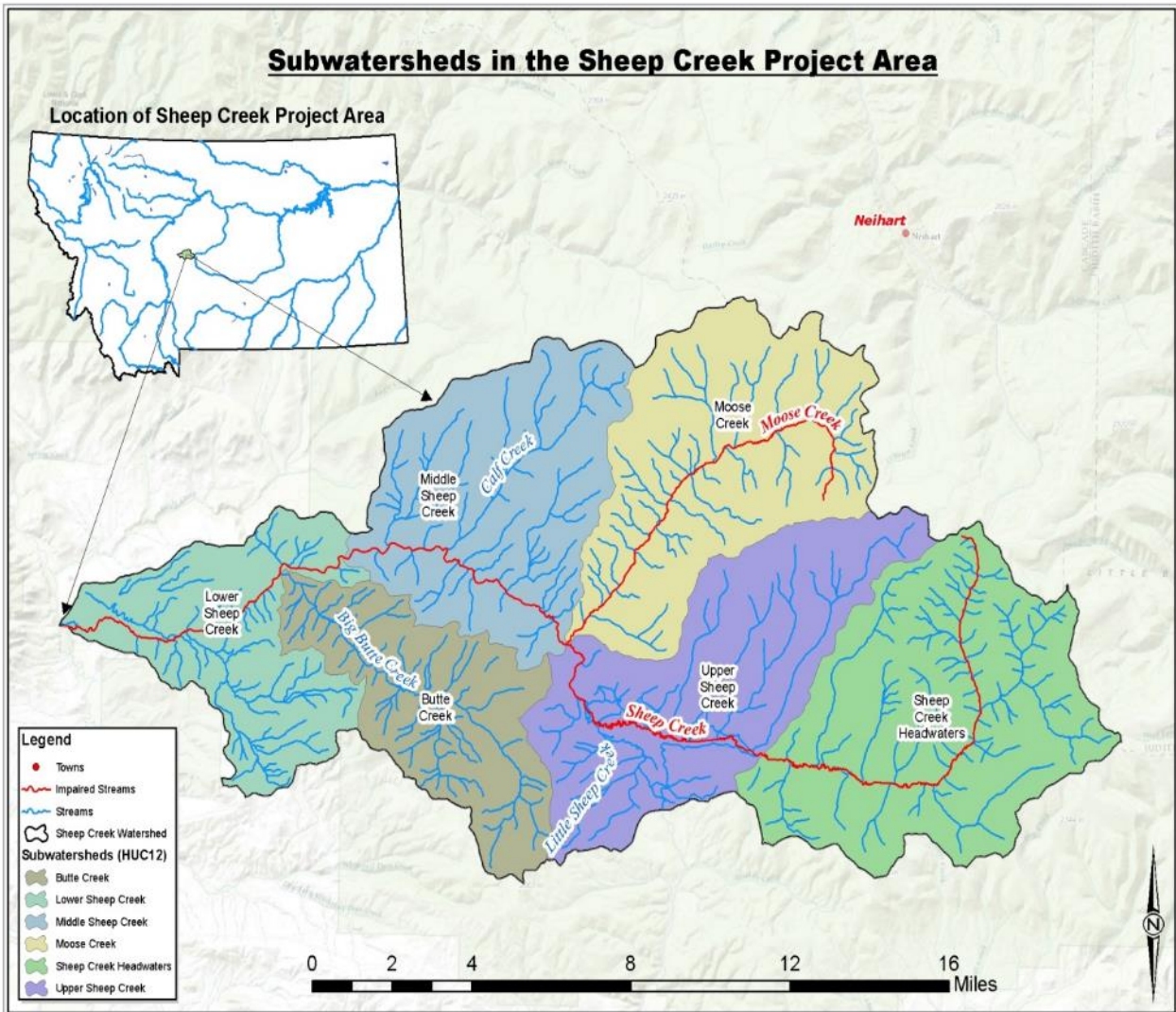


Figure A-3. Hydrography of the Sheep Creek TMDL Project Area

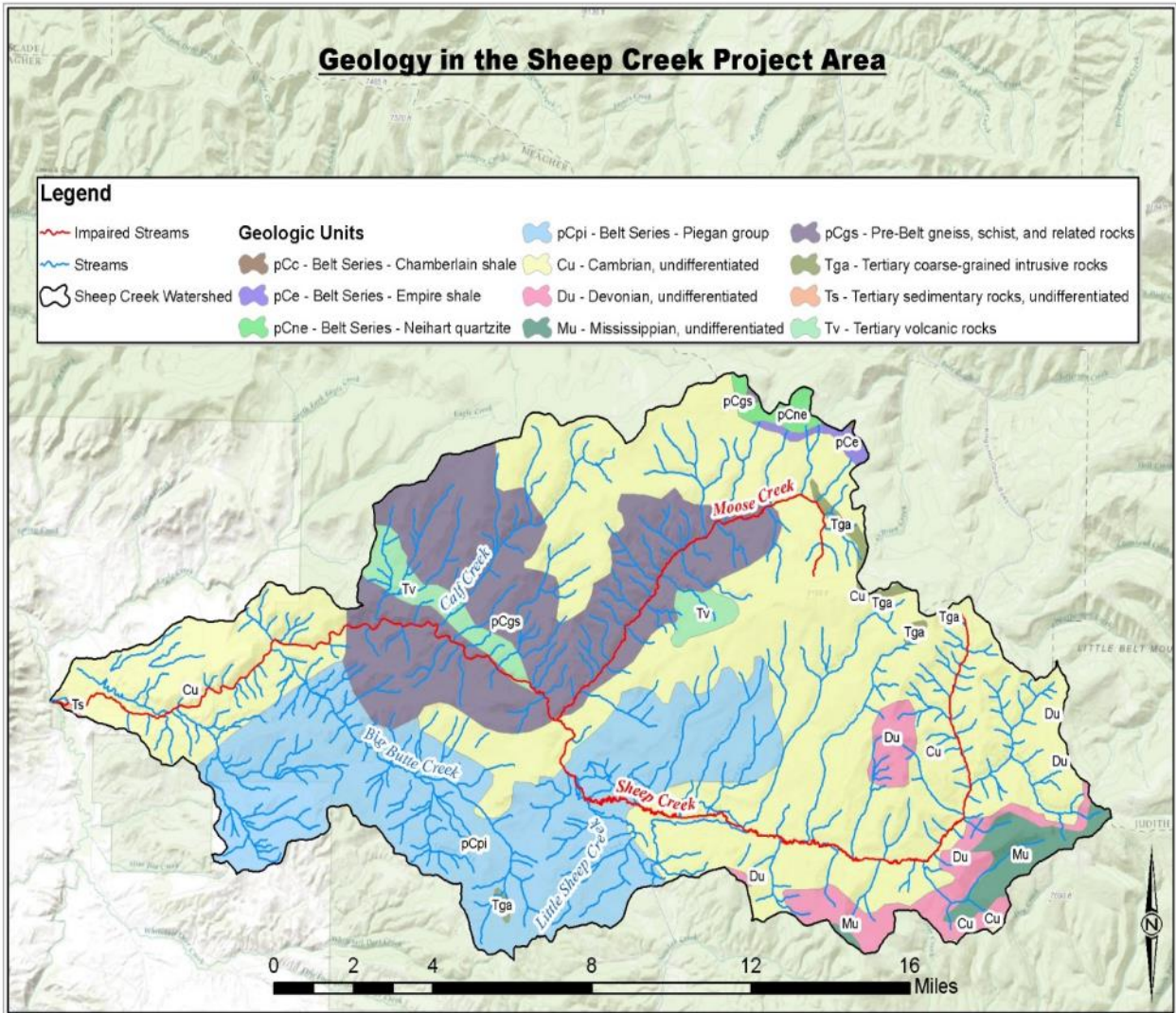


Figure A-4. Generalized Geology of the Sheep Creek TMDL Project Area

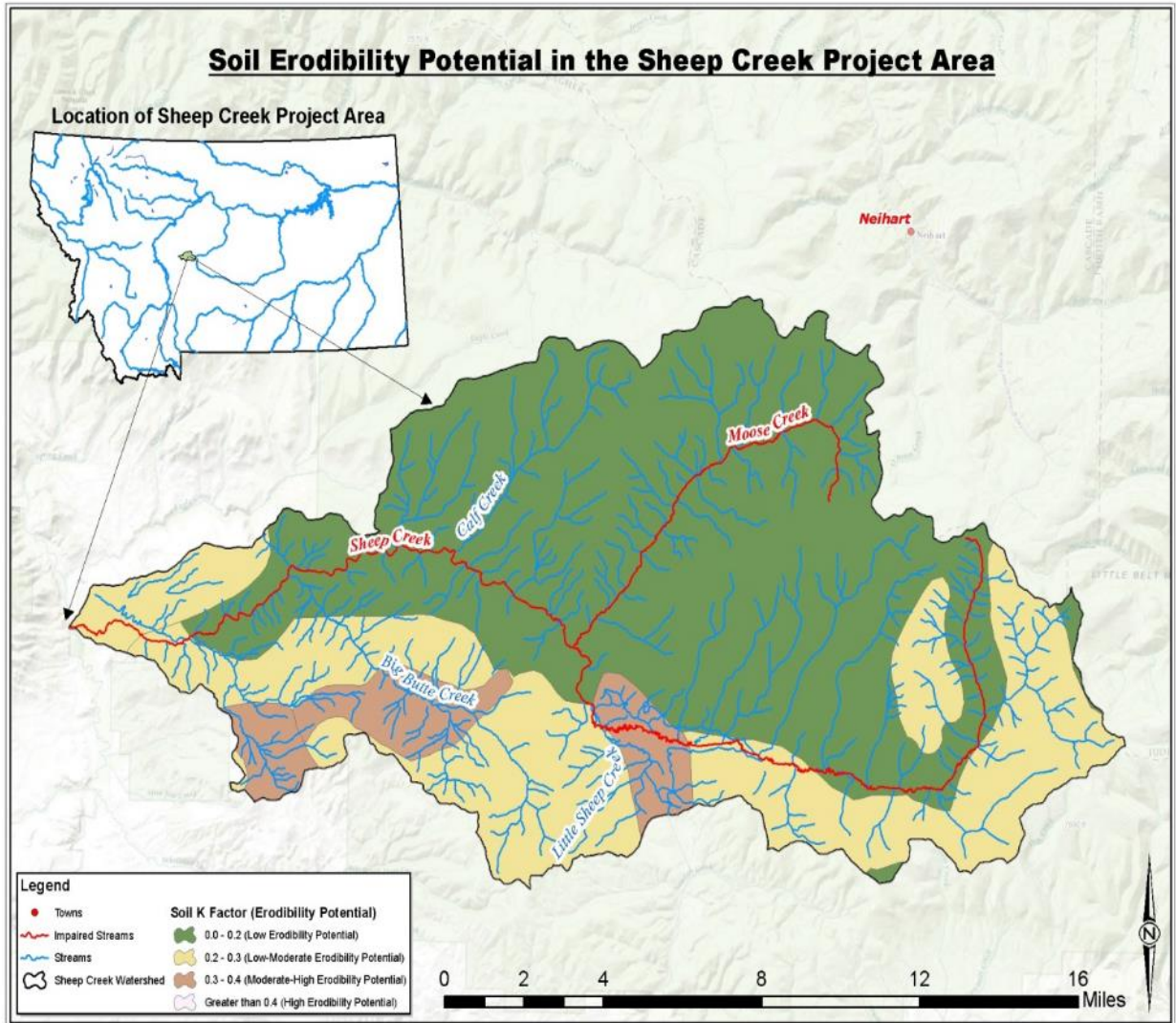


Figure A-5. Soil Erodibility of the Sheep Creek TMDL Project Area

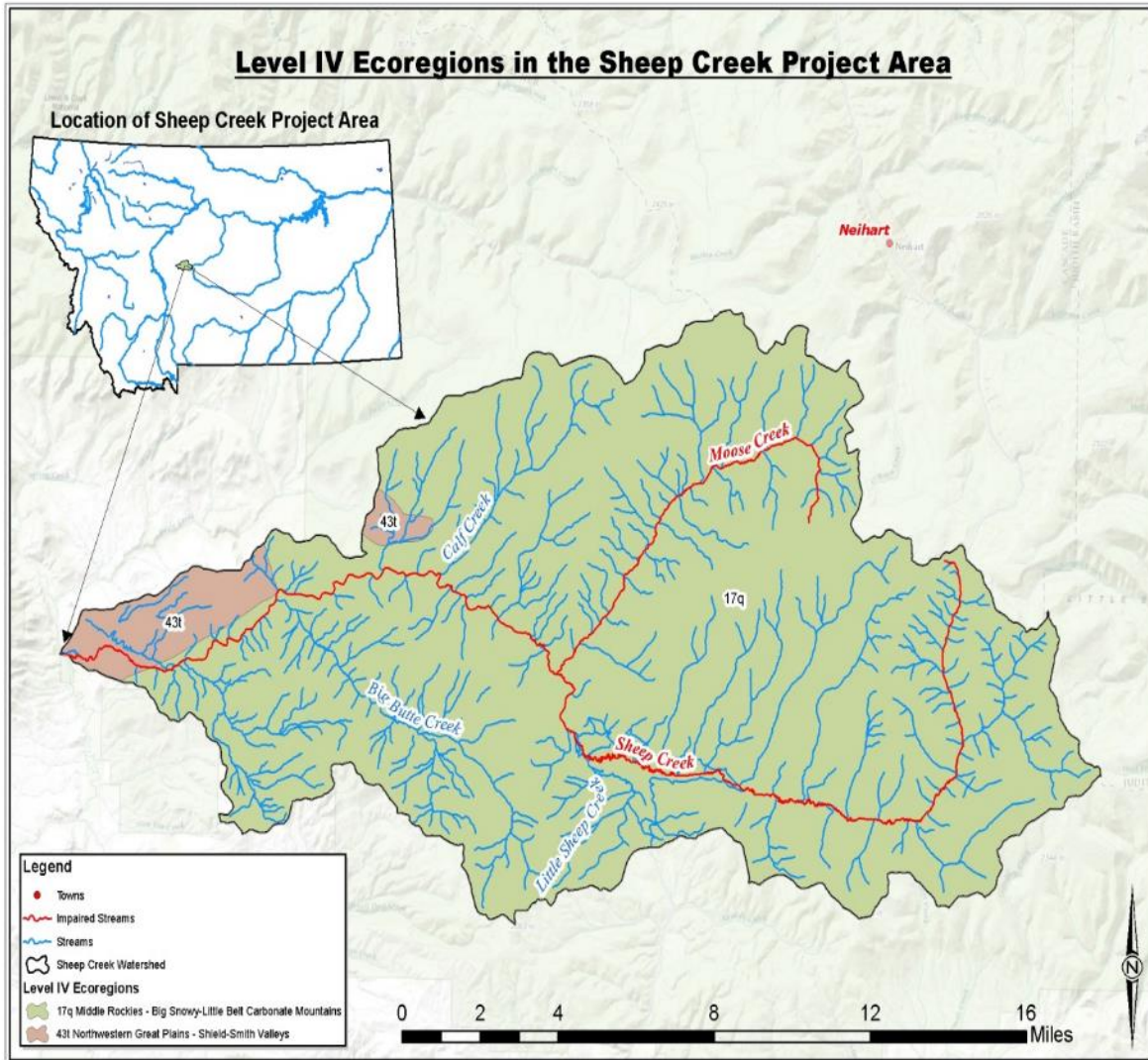


Figure A-6. Level IV Ecoregions in the Sheep Creek TMDL Project Area

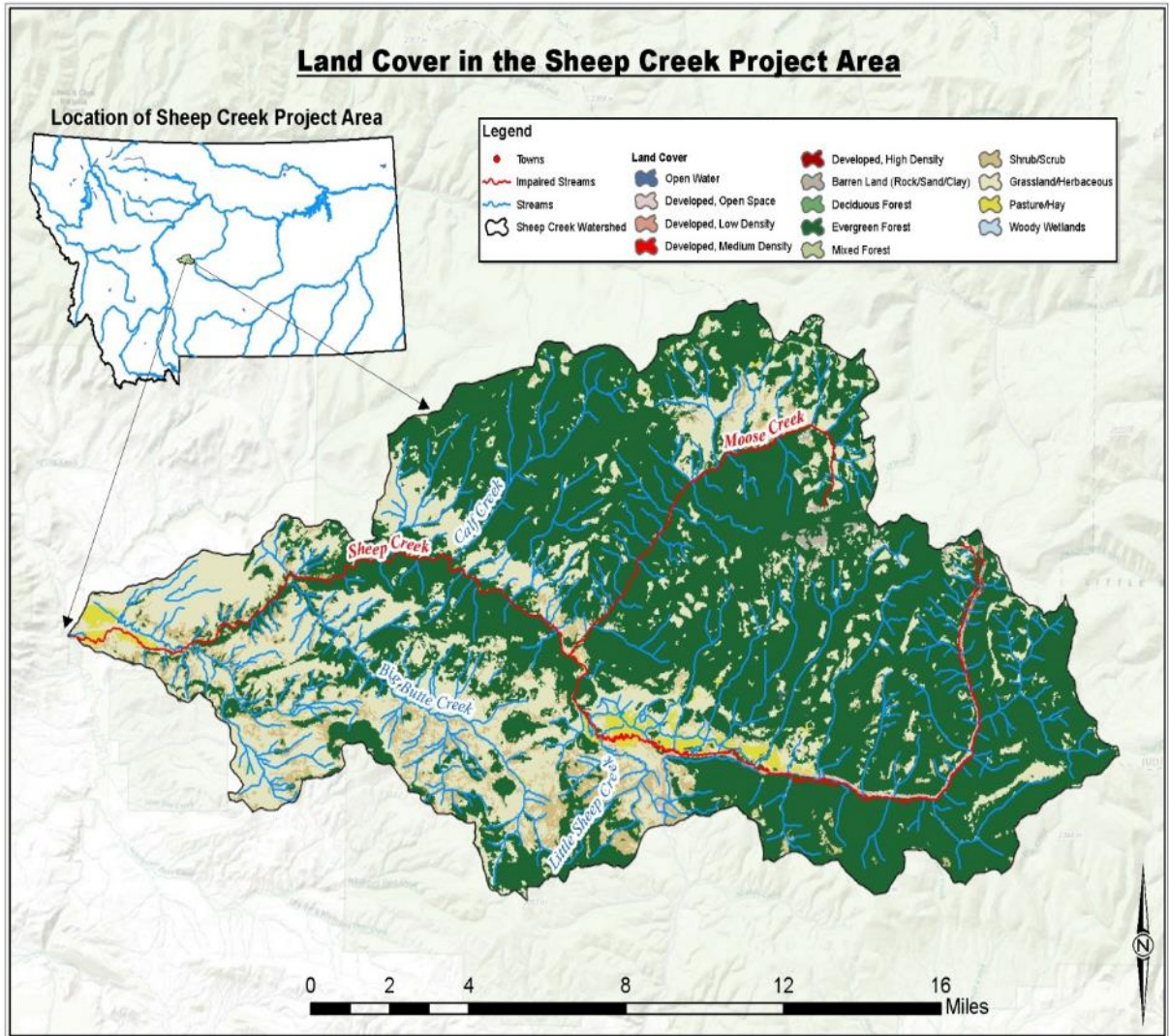


Figure A-7. Land Cover in the Sheep Creek TMDL Project Area



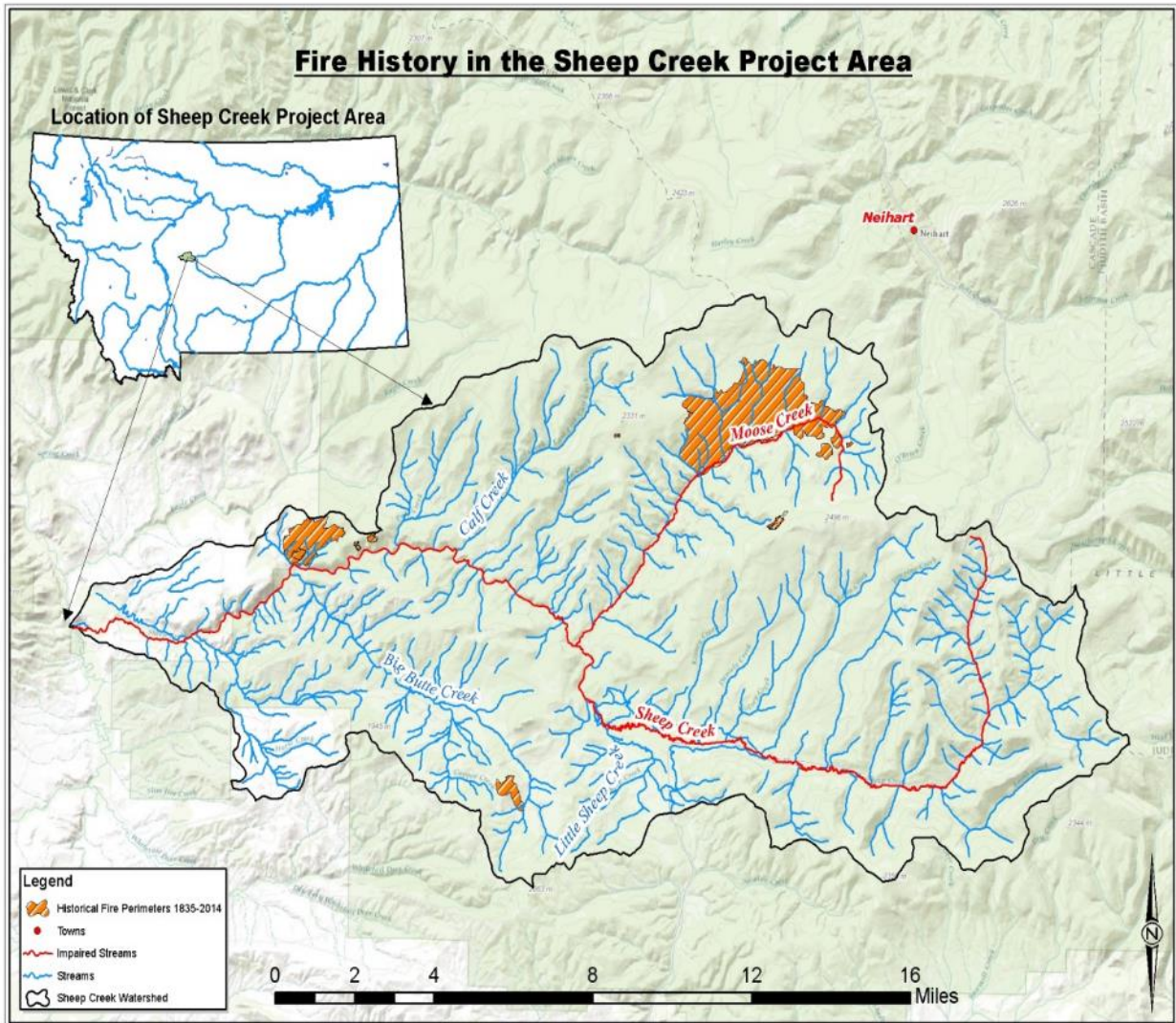


Figure A-8. Fire History of the Sheep Creek TMDL Project Area

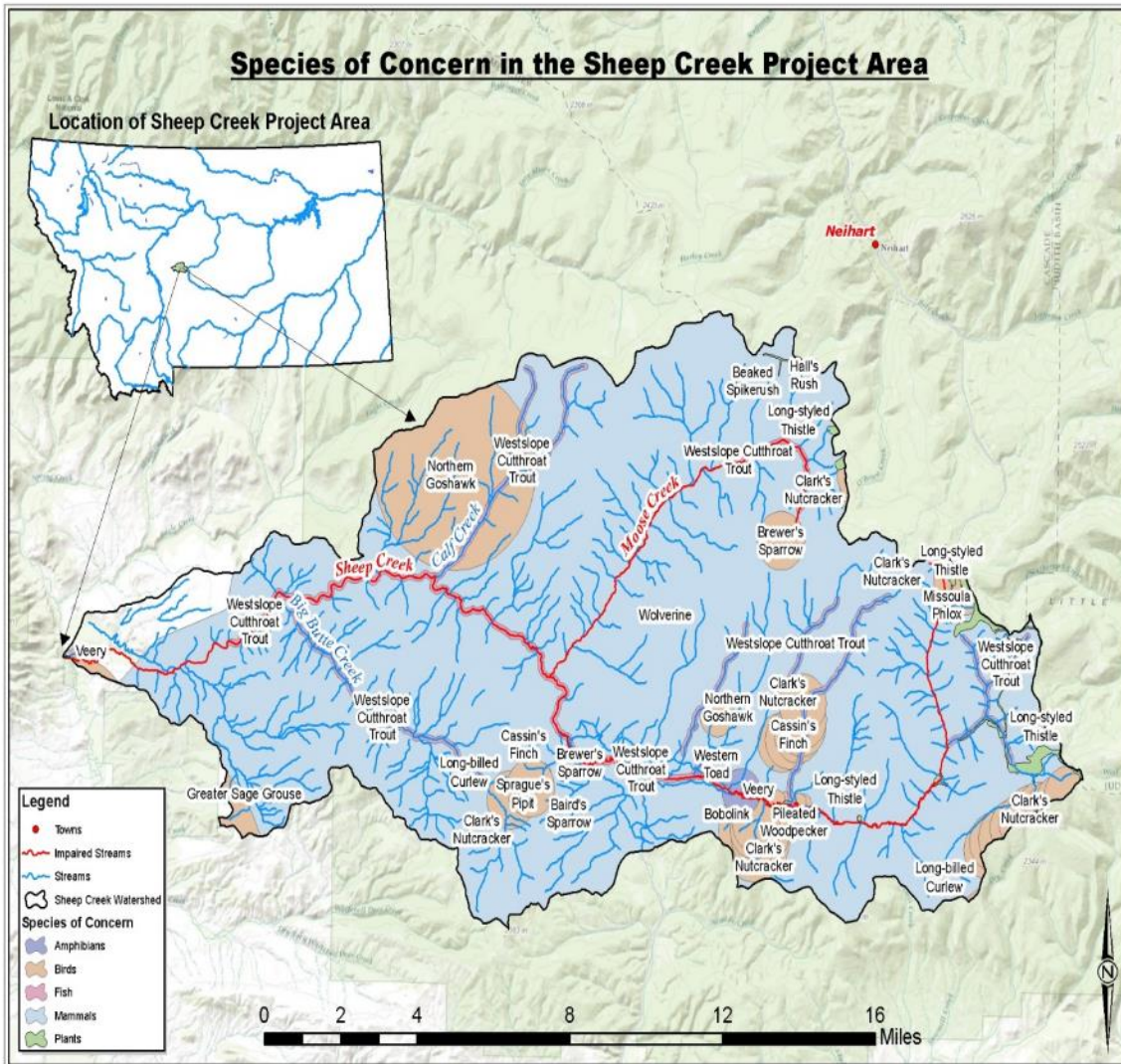


Figure A-9. Species of Concern Distribution in the Sheep Creek TMDL Project Area

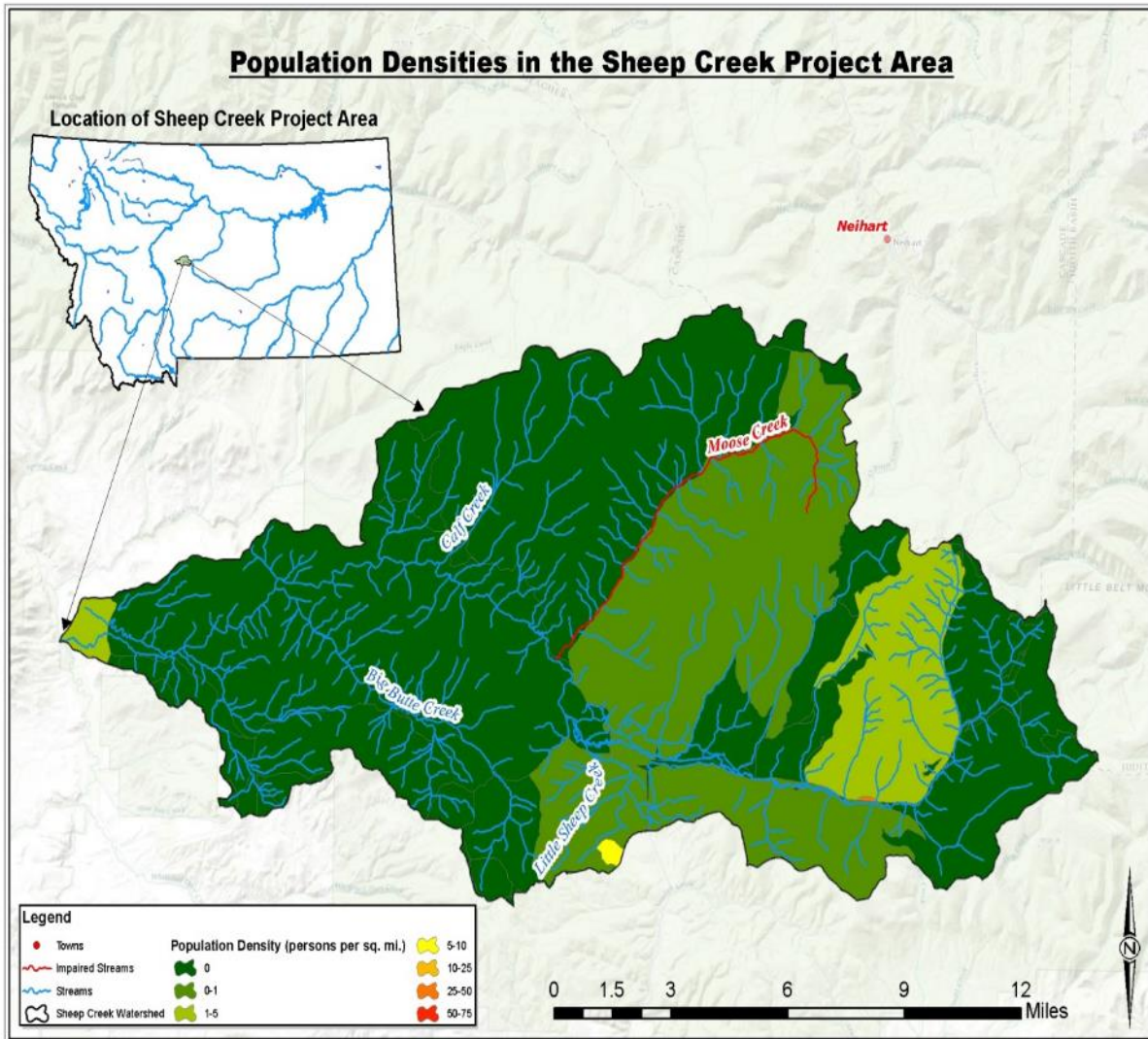


Figure A-10. Population Density of the Sheep Creek TMDL Project Area

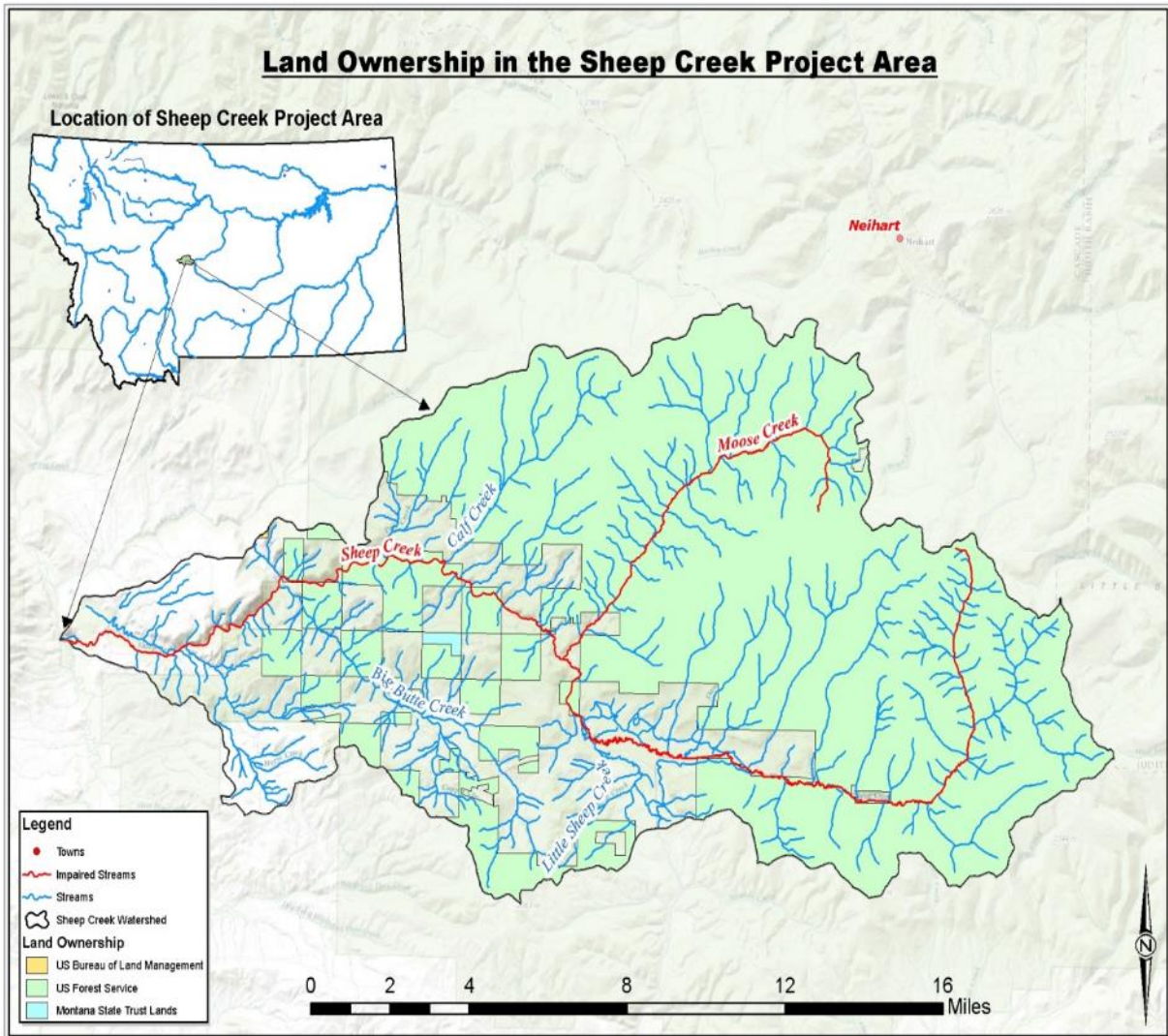


Figure A-11. Land Management of the Sheep Creek TMDL Project Area

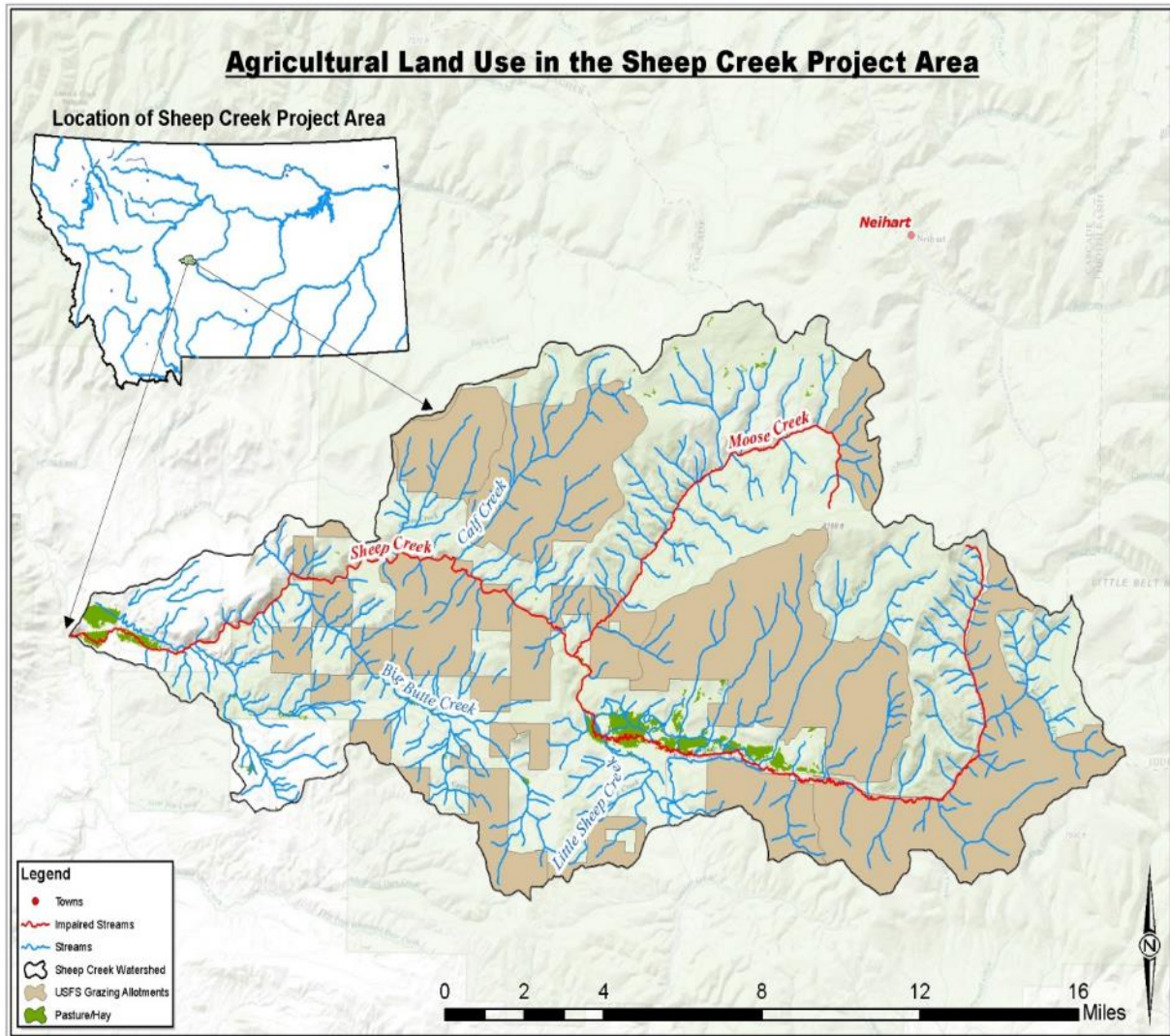


Figure A-12. Agricultural Use and Grazing Allotments in the Sheep Creek TMDL Project Area

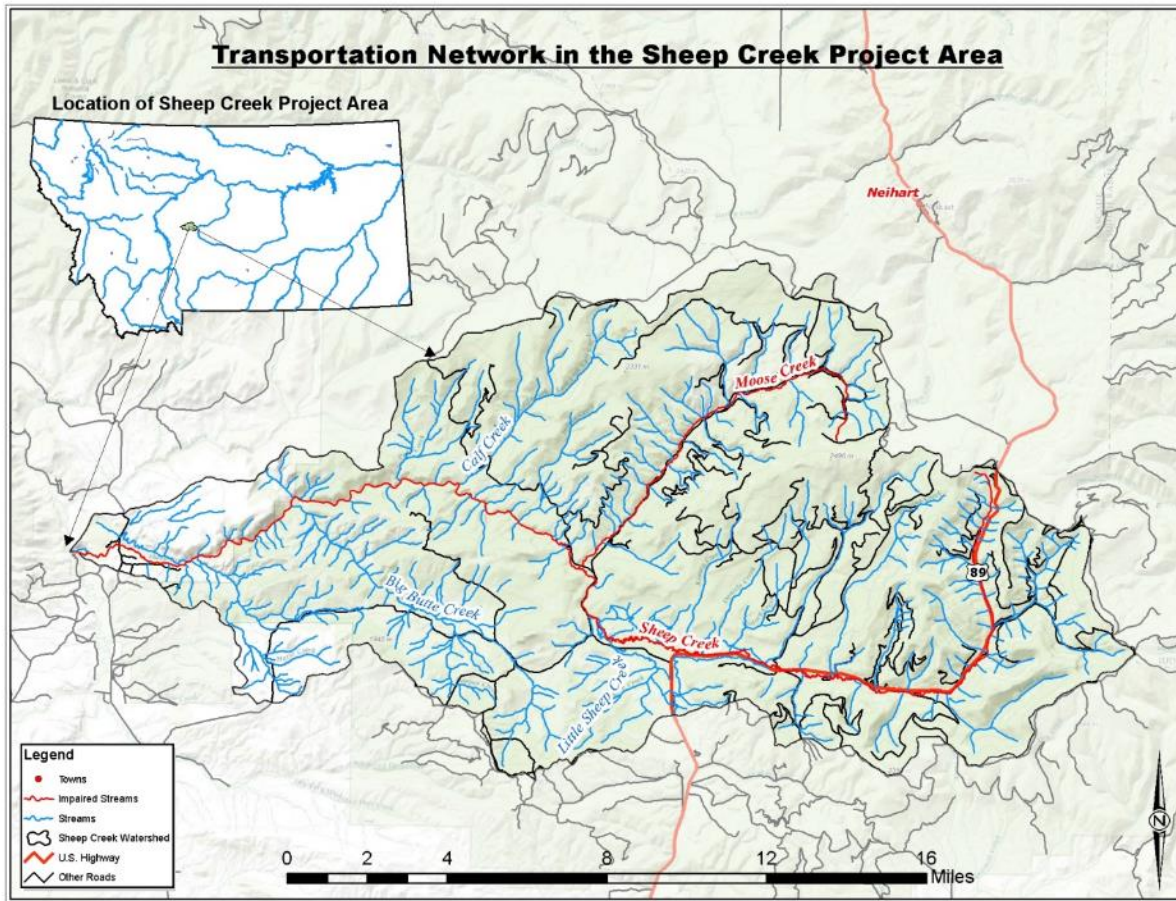


Figure A-13. Road Networks in the Sheep Creek TMDL Project Area