

APPENDIX A – MAPS

Figure A-1. Project Area Overview..... A-3

Figure A-2. Wallace Creek and Cramer Creek Location A-4

Figure A-3. Wallace Creek and Cramer Creek Topography and Elevation..... A-5

Figure A-4. Wallace Creek and Cramer Creek Average Annual Precipitation..... A-6

Figure A-5. Wallace Creek and Cramer Creek Hydrography A-7

Figure A-6. Wallace Creek and Cramer Creek Geology..... A-8

Figure A-7. Wallace Creek and Cramer Creek Soil Erodibility A-9

Figure A-8. Wallace Creek and Cramer Creek Level IV Ecoregions A-10

Figure A-9. Wallace Creek and Cramer Creek Land Use and Land Cover A-11

Figure A-10. Wallace Creek and Cramer Creek Land Cover: Regional GAP A-12

Figure A-11. Wallace Creek and Cramer Creek Fish Distribution A-13

Figure A-12. Wallace Creek and Cramer Creek Fire History A-14

Figure A-13. Wallace Creek and Cramer Creek Population Density: 2010 Census A-15

Figure A-14. Wallace Creek and Cramer Creek Land Ownership..... A-16

Figure A-15. Wallace Creek and Cramer Creek Roads A-17

Figure A-16. Cramer Creek Abandoned Mines A-18

Figure A-17. Wallace Creek Abandoned Mines A-19

Figure A-18. Flat Creek Location A-20

Figure A-19. Flat Creek Topography and Elevation..... A-21

Figure A-20. Flat Creek Average Annual Precipitation..... A-22

Figure A-21. Flat Creek Hydrography A-23

Figure A-22. Flat Creek Geology..... A-24

Figure A-23. Flat Creek Soil Erodibility..... A-25

Figure A-24. Flat Creek Level IV Ecoregions..... A-26

Figure A-25. Flat Creek Land Use and Land Cover A-27

Figure A-26. Flat Creek Land Cover: Regional GAP A-28

Figure A-27. Flat Creek Fish Distribution A-29

Figure A-28. Flat Creek Fire History A-30

Figure A-29. Flat Creek Population Density: 2010 Census..... A-31

Figure A-30. Flat Creek Land Ownership..... A-32

Figure A-31. Flat Creek Roads A-33

Figure A-32. Flat Creek Abandoned Mines A-34

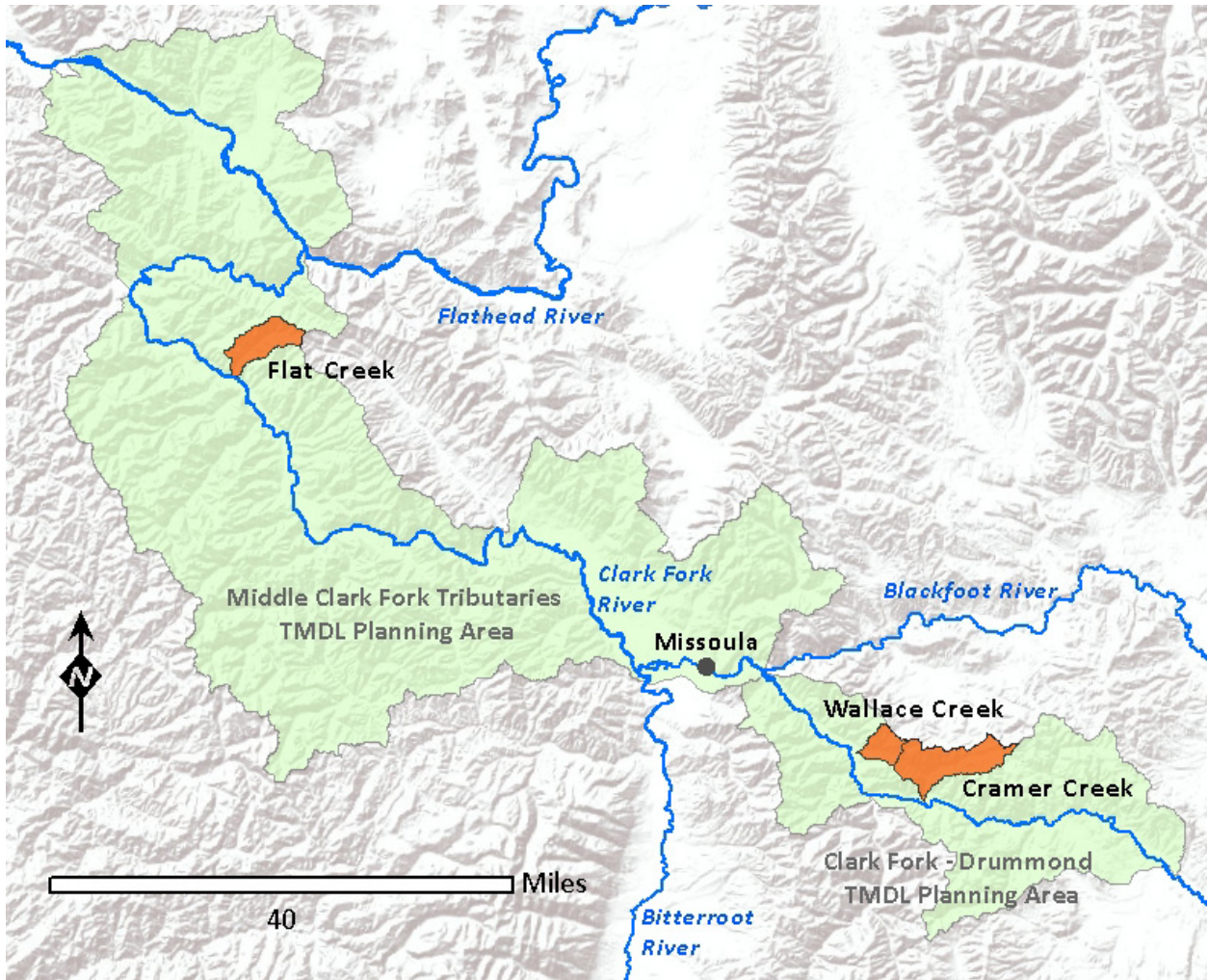


Figure A-1. Project Area Overview

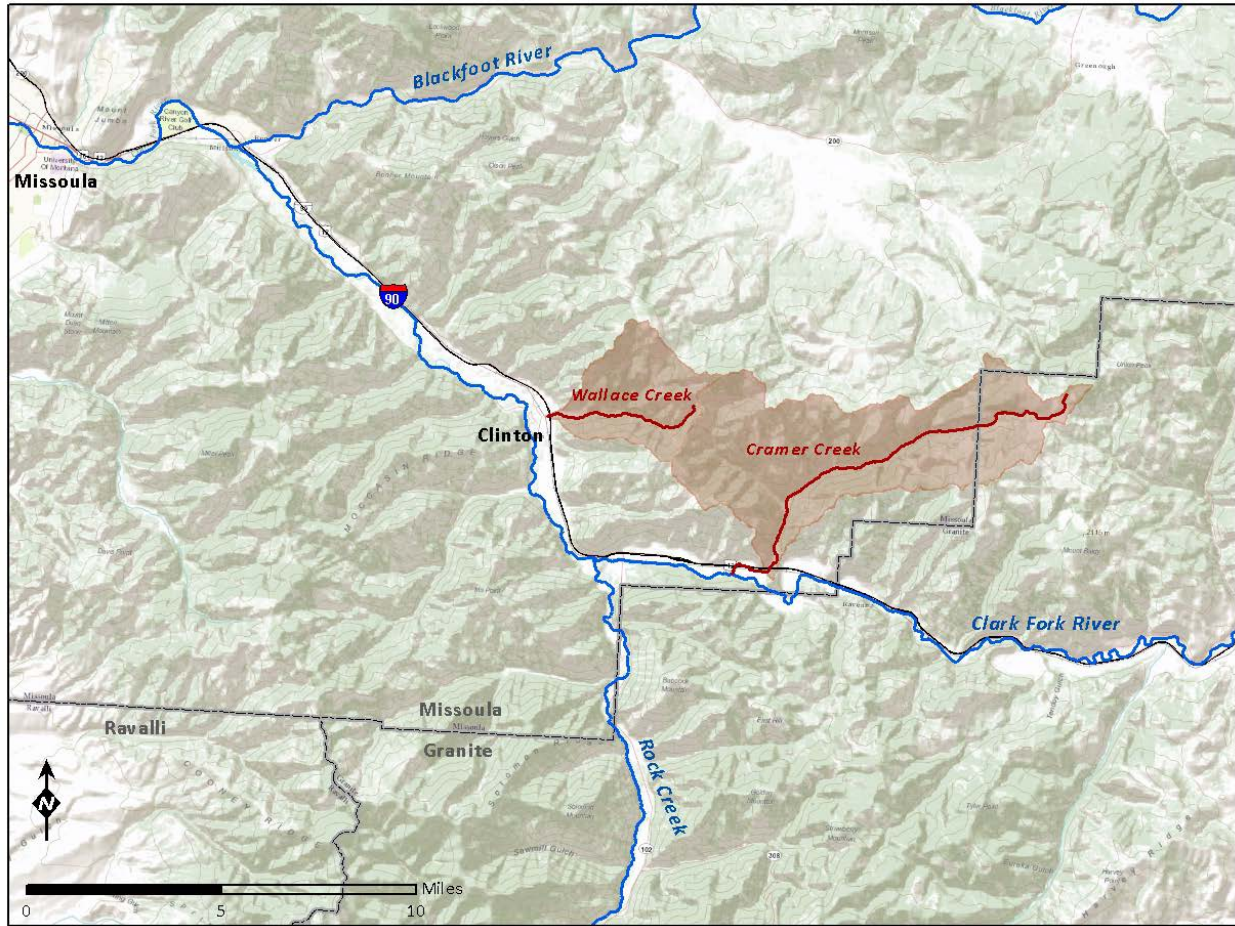


Figure A-2. Wallace Creek and Cramer Creek Location

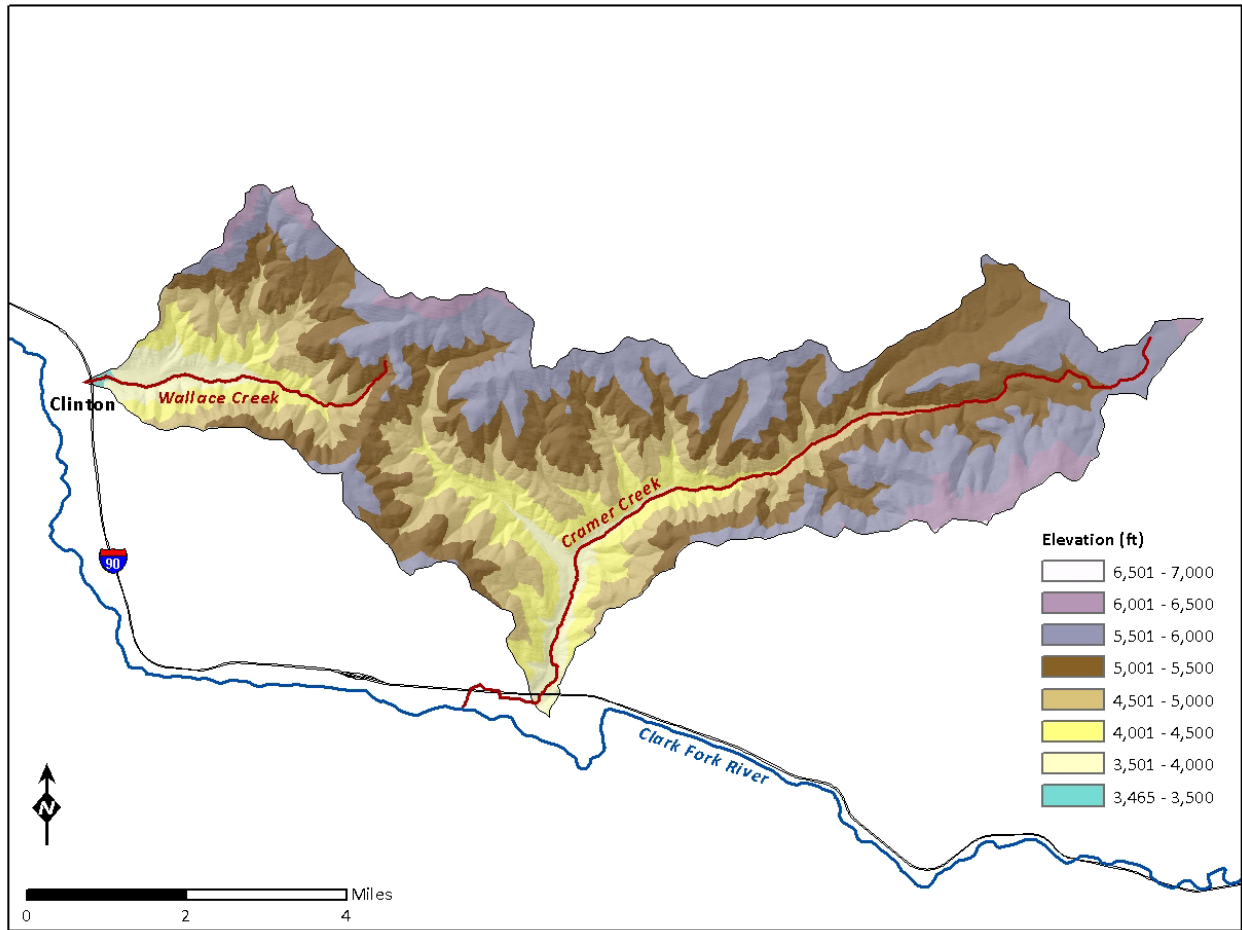


Figure A-3. Wallace Creek and Cramer Creek Topography and Elevation

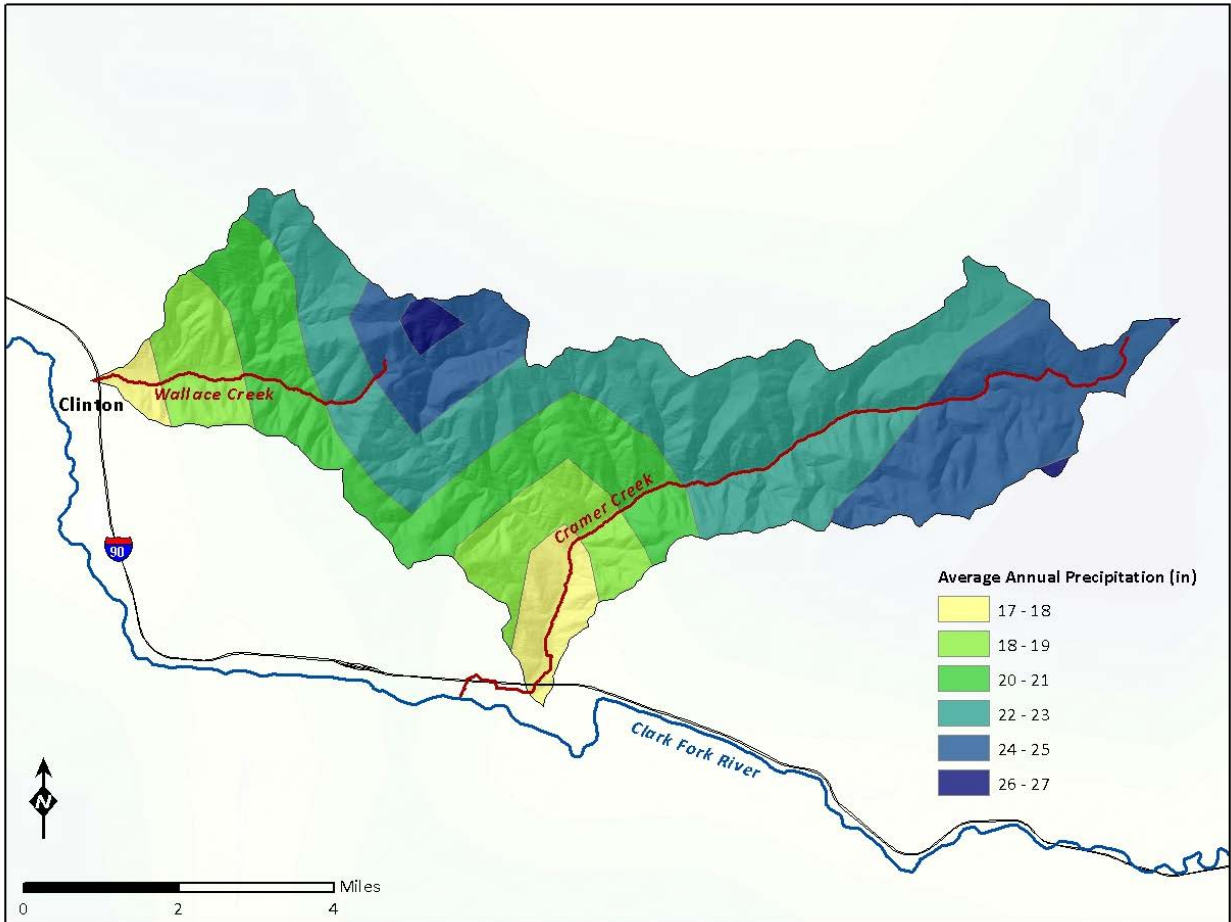


Figure A-4. Wallace Creek and Cramer Creek Average Annual Precipitation

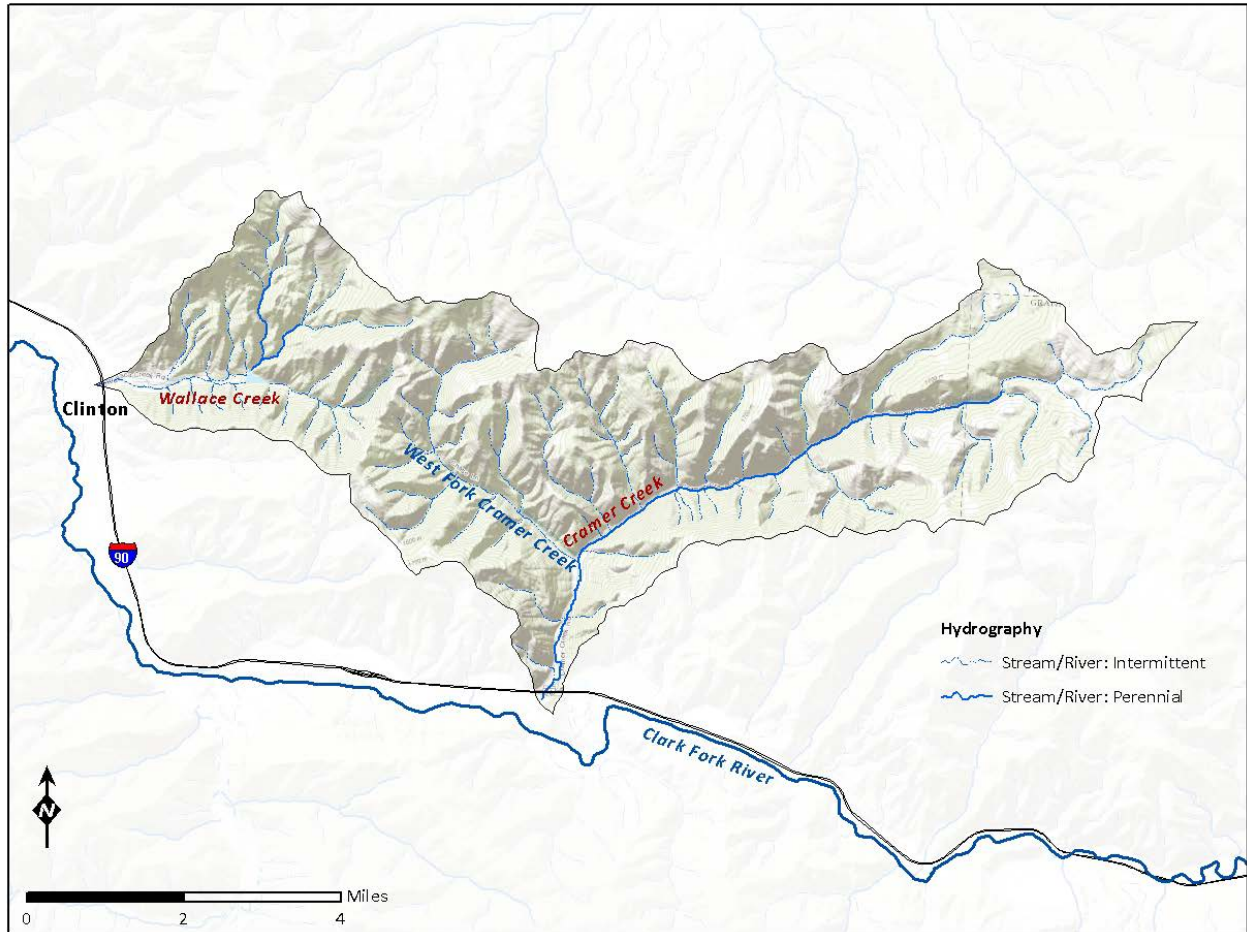


Figure A-5. Wallace Creek and Cramer Creek Hydrography

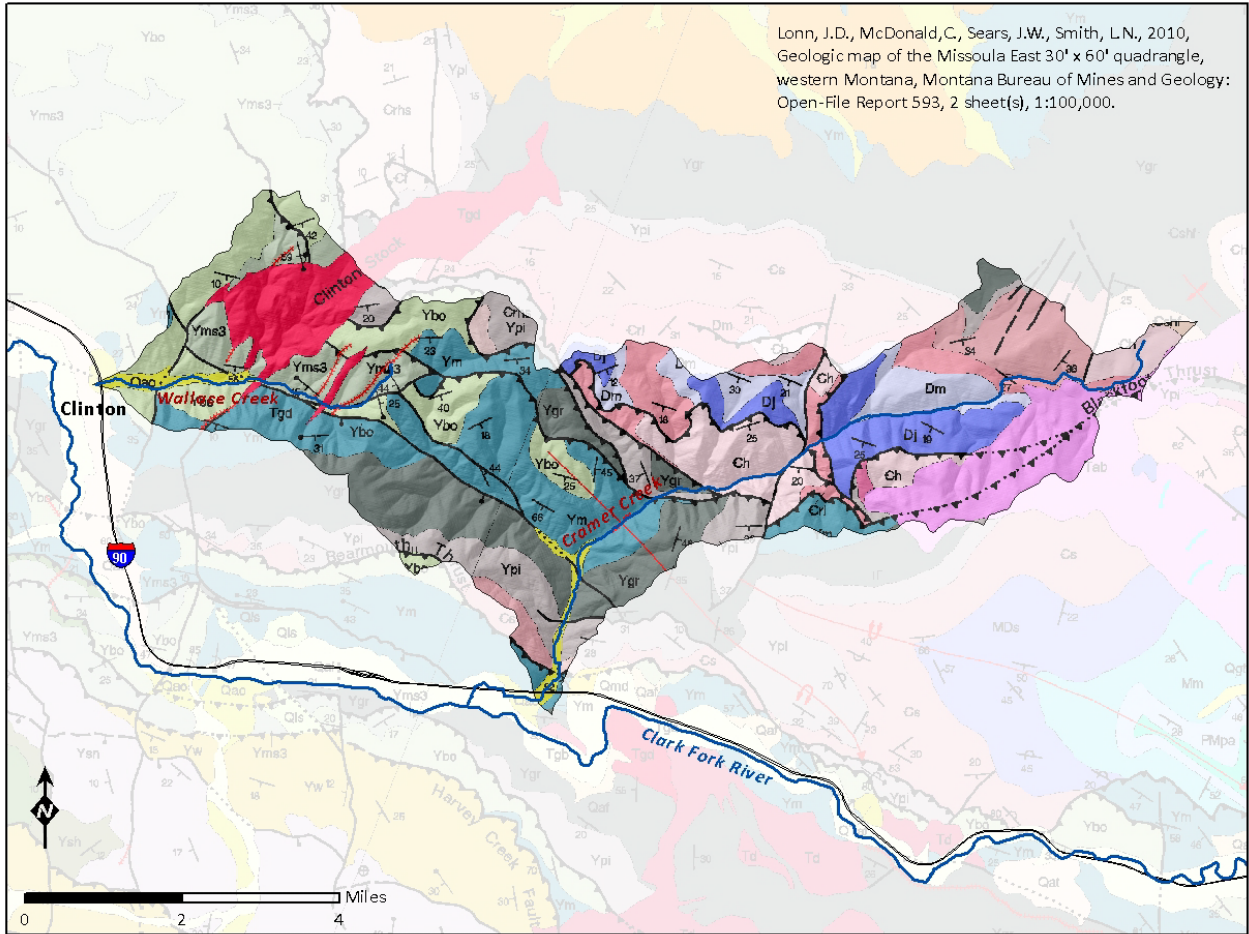


Figure A-6. Wallace Creek and Cramer Creek Geology

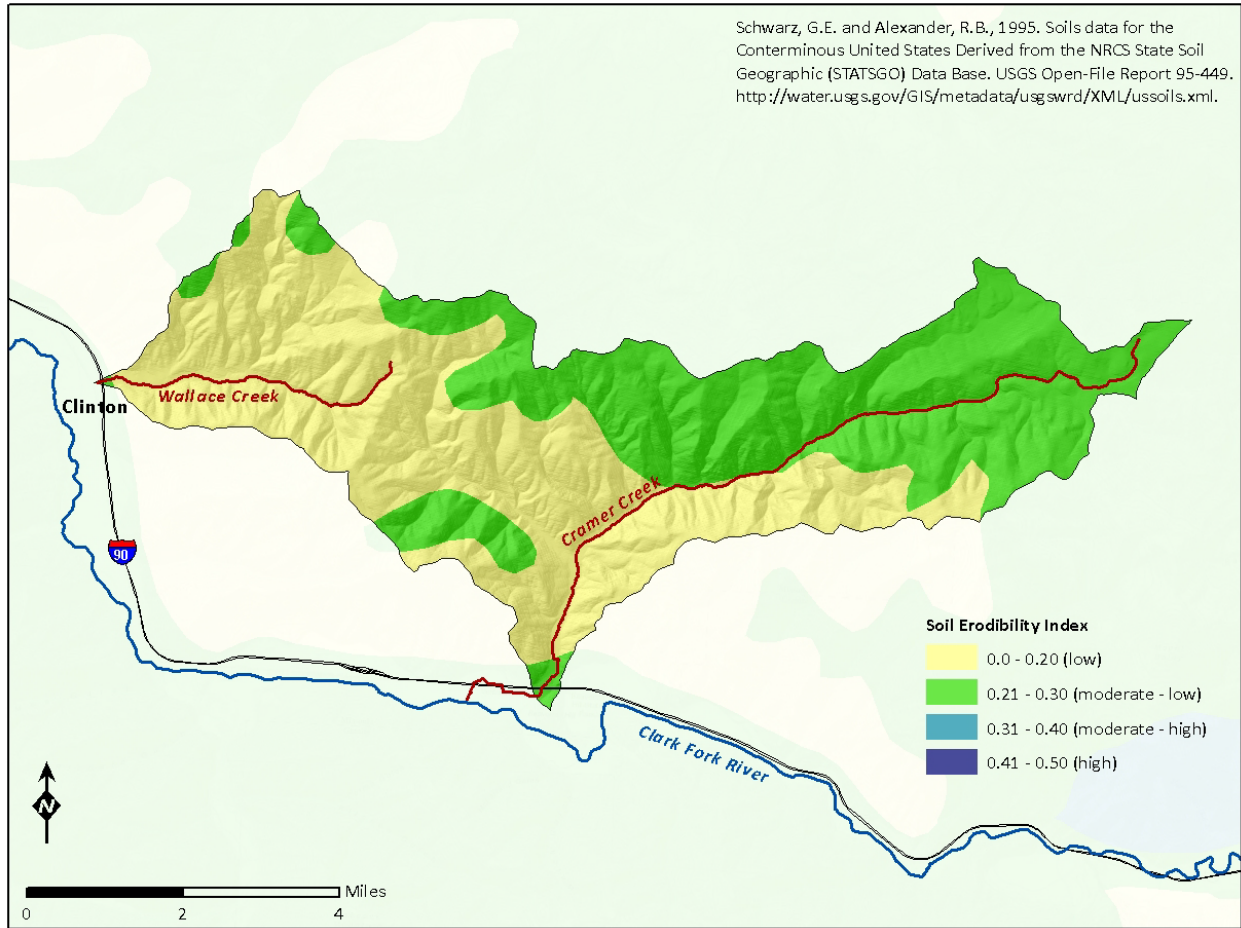


Figure A-7. Wallace Creek and Cramer Creek Soil Erodibility

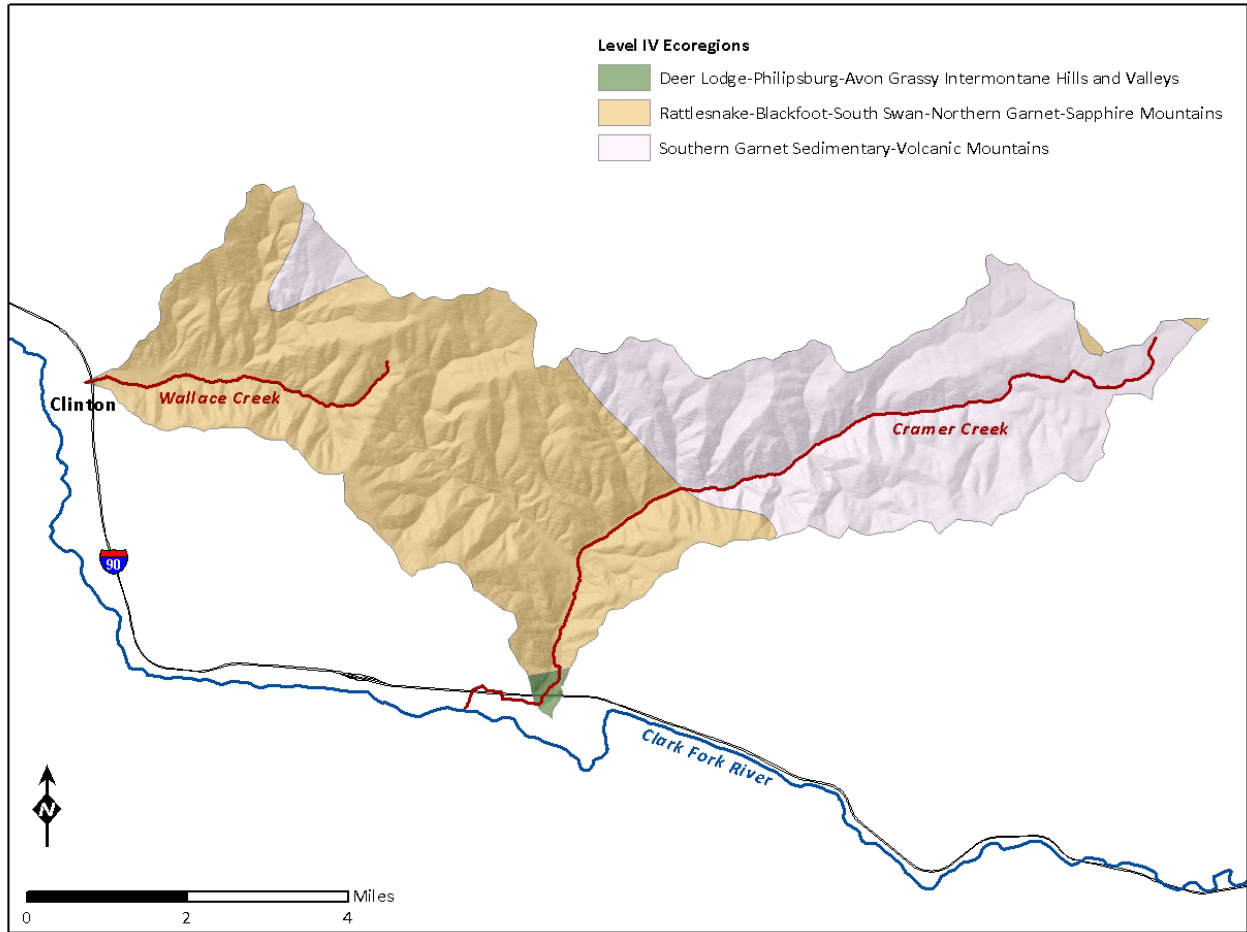


Figure A-8. Wallace Creek and Cramer Creek Level IV Ecoregions

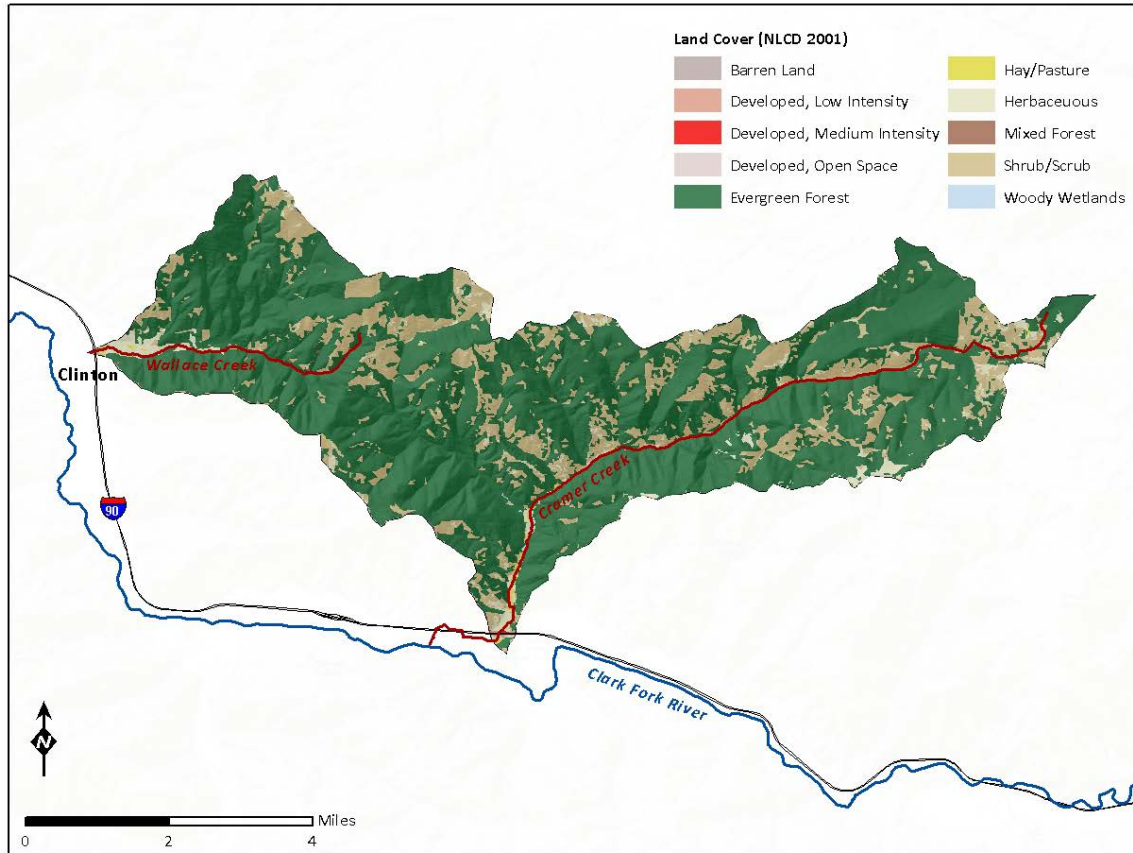


Figure A-9. Wallace Creek and Cramer Creek Land Use and Land Cover

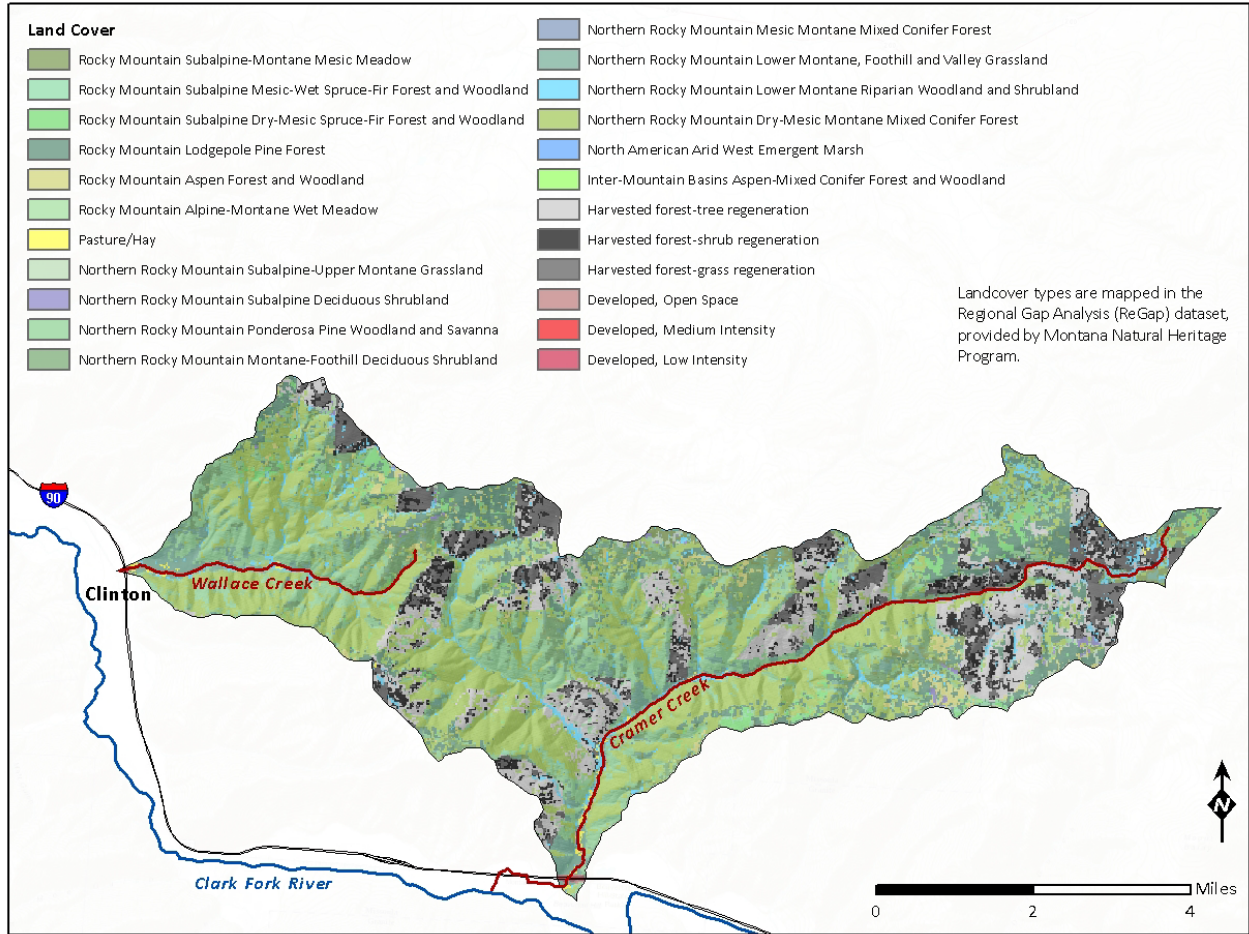


Figure A-10. Wallace Creek and Cramer Creek Land Cover: Regional GAP

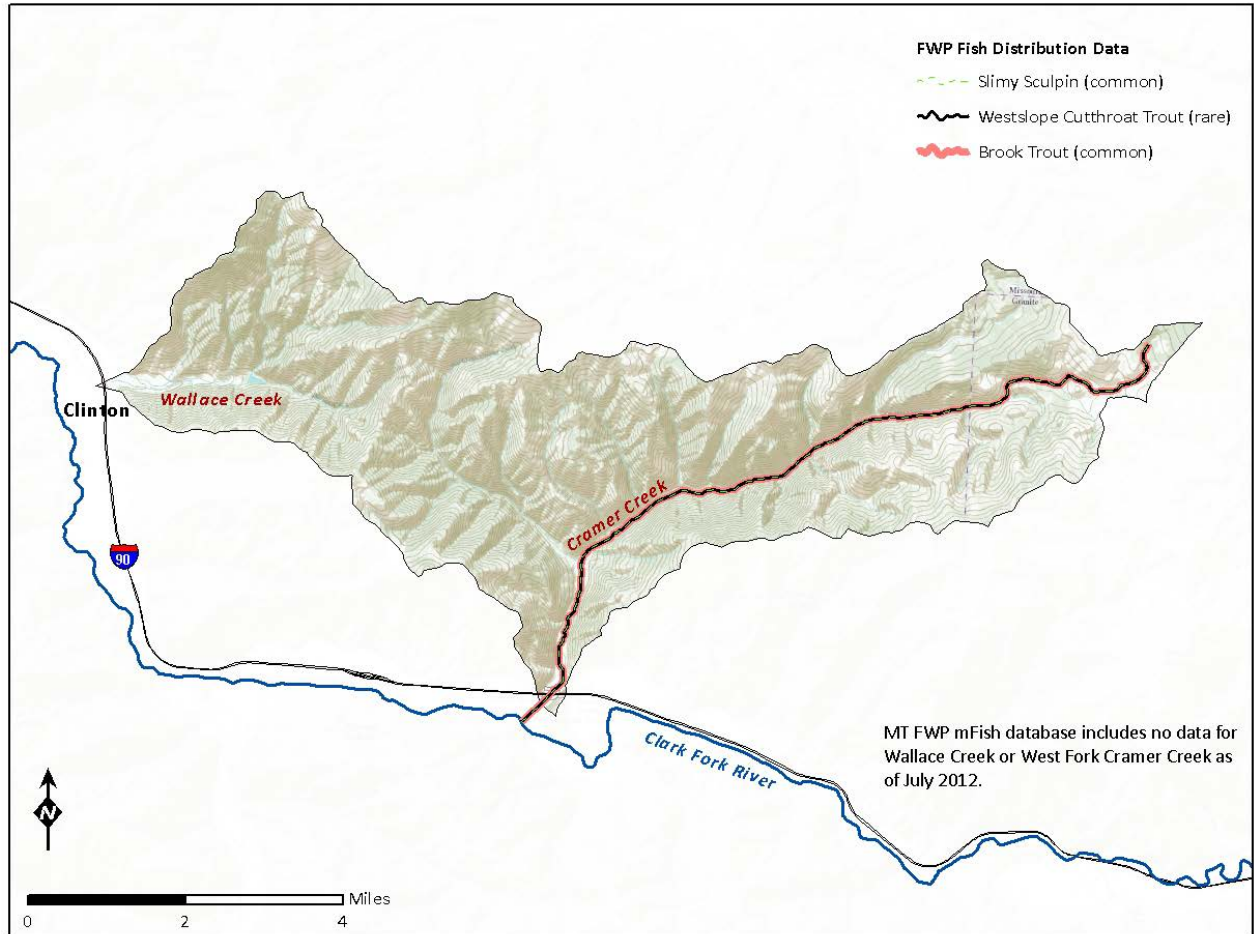


Figure A-11. Wallace Creek and Cramer Creek Fish Distribution

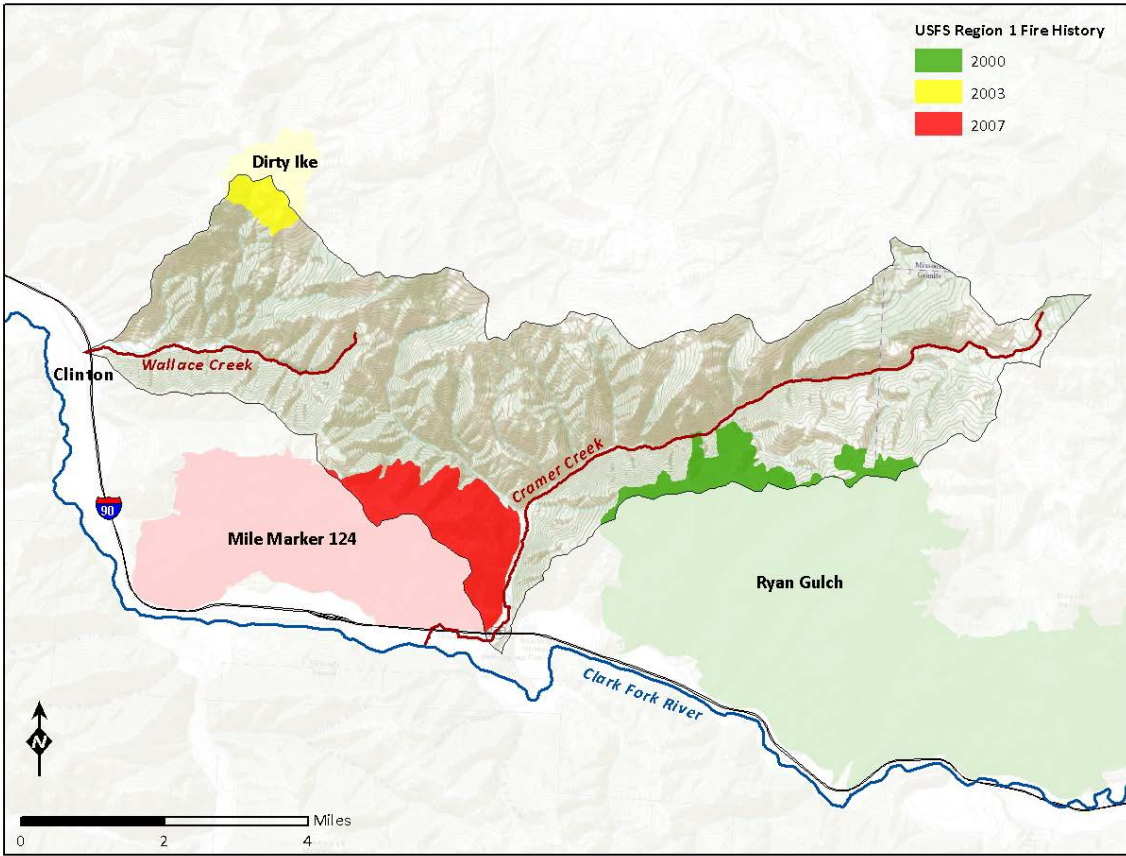


Figure A-12. Wallace Creek and Cramer Creek Fire History

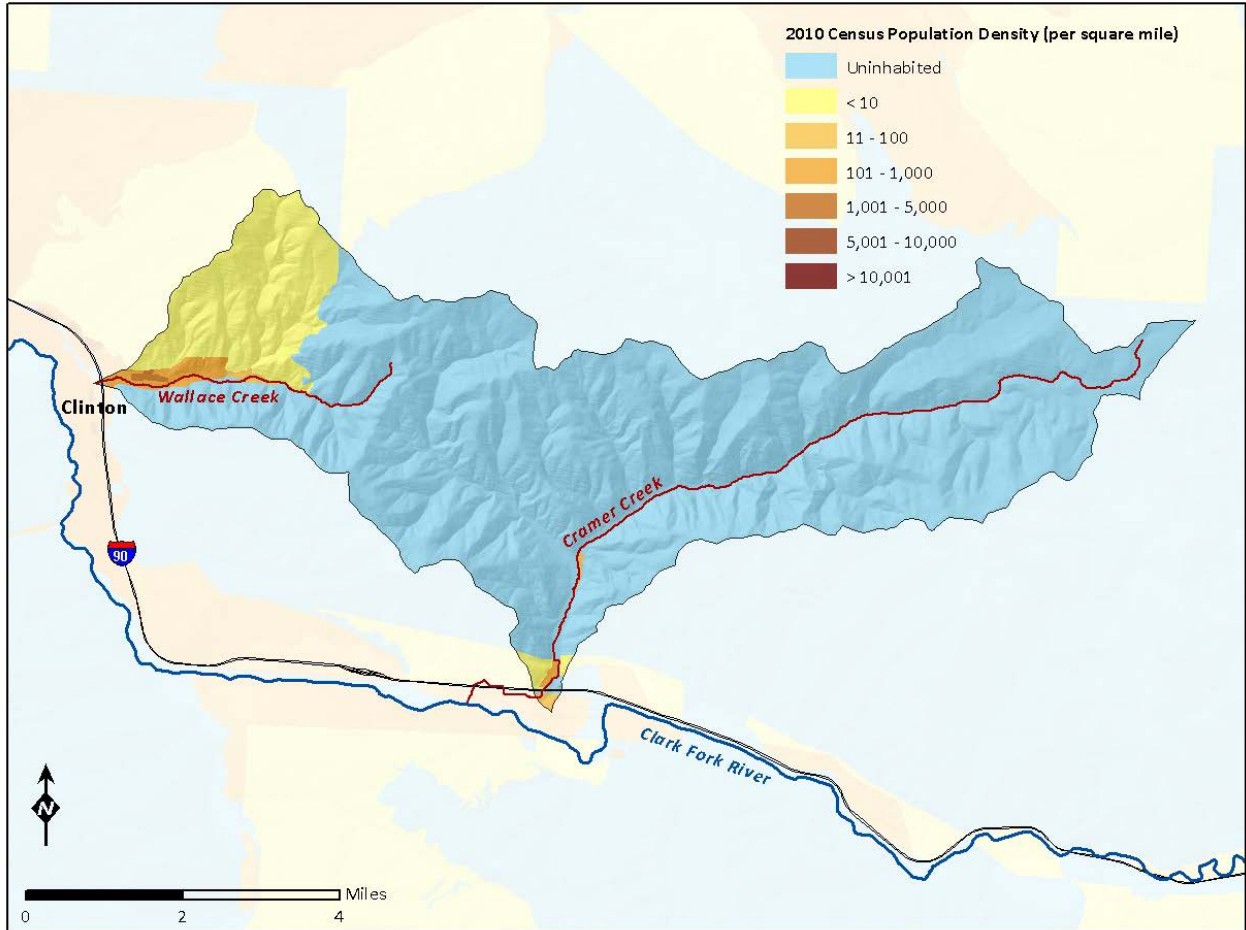


Figure A-13. Wallace Creek and Cramer Creek Population Density: 2010 Census

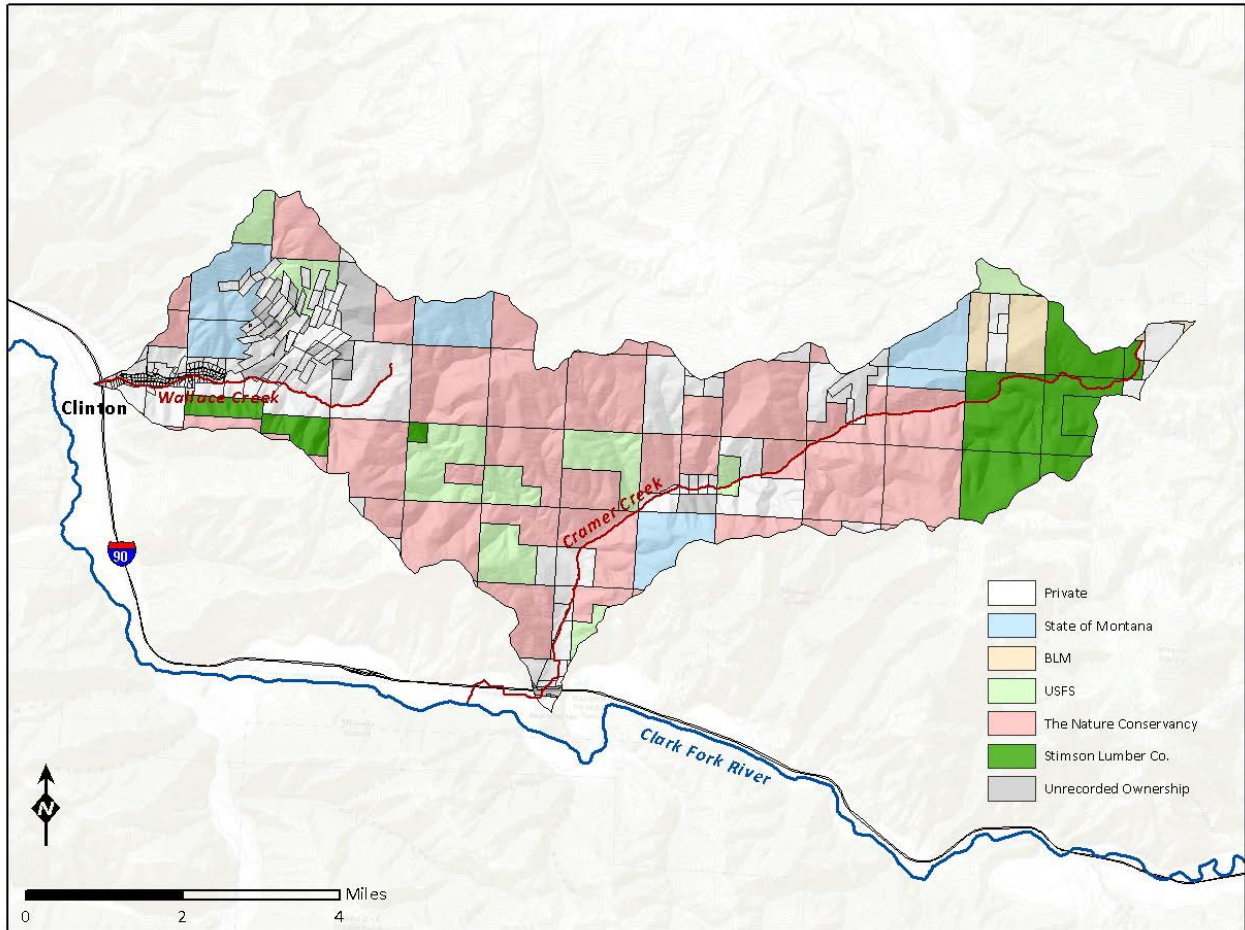


Figure A-14. Wallace Creek and Cramer Creek Land Ownership

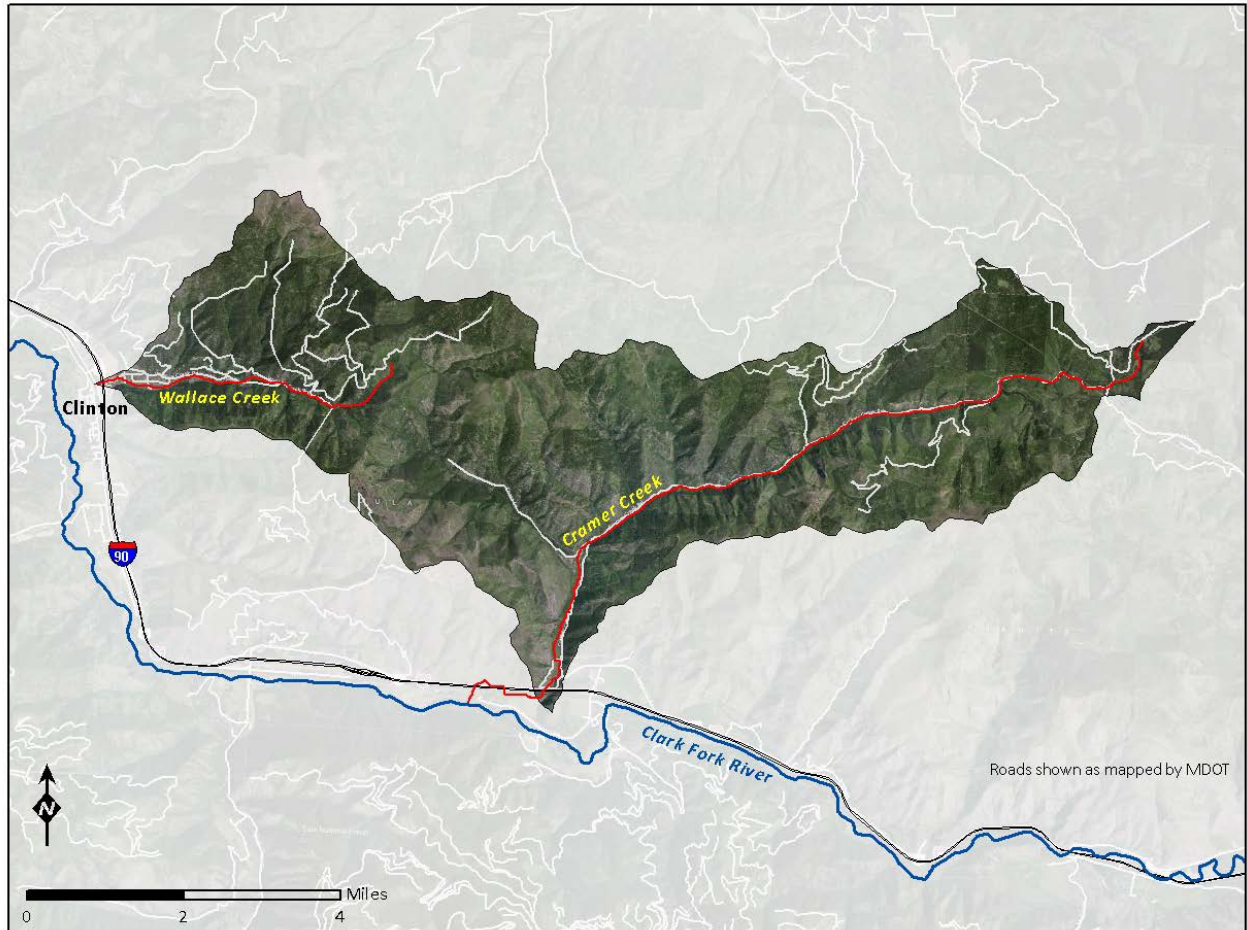


Figure A-15. Wallace Creek and Cramer Creek Roads

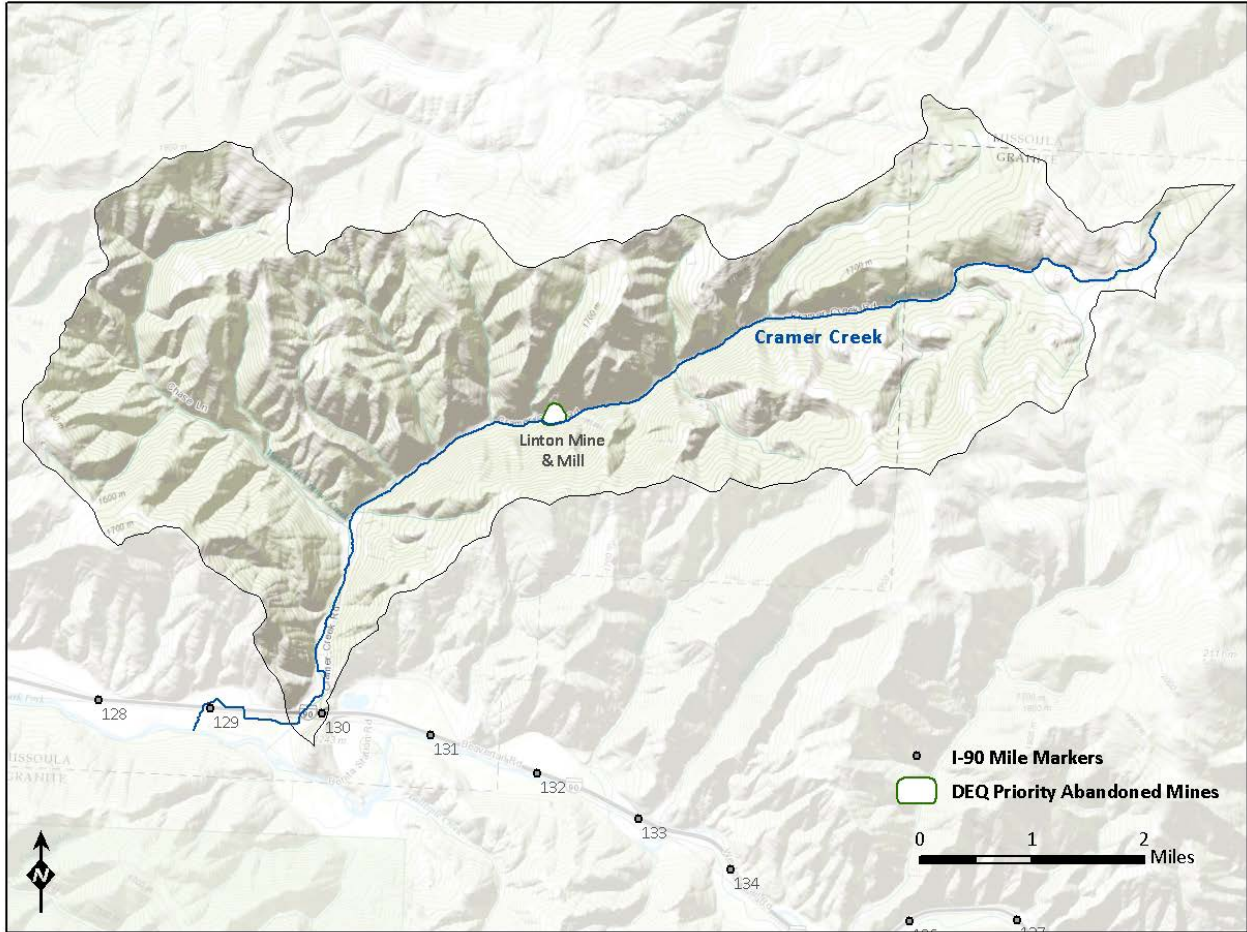


Figure A-16. Cramer Creek Abandoned Mines

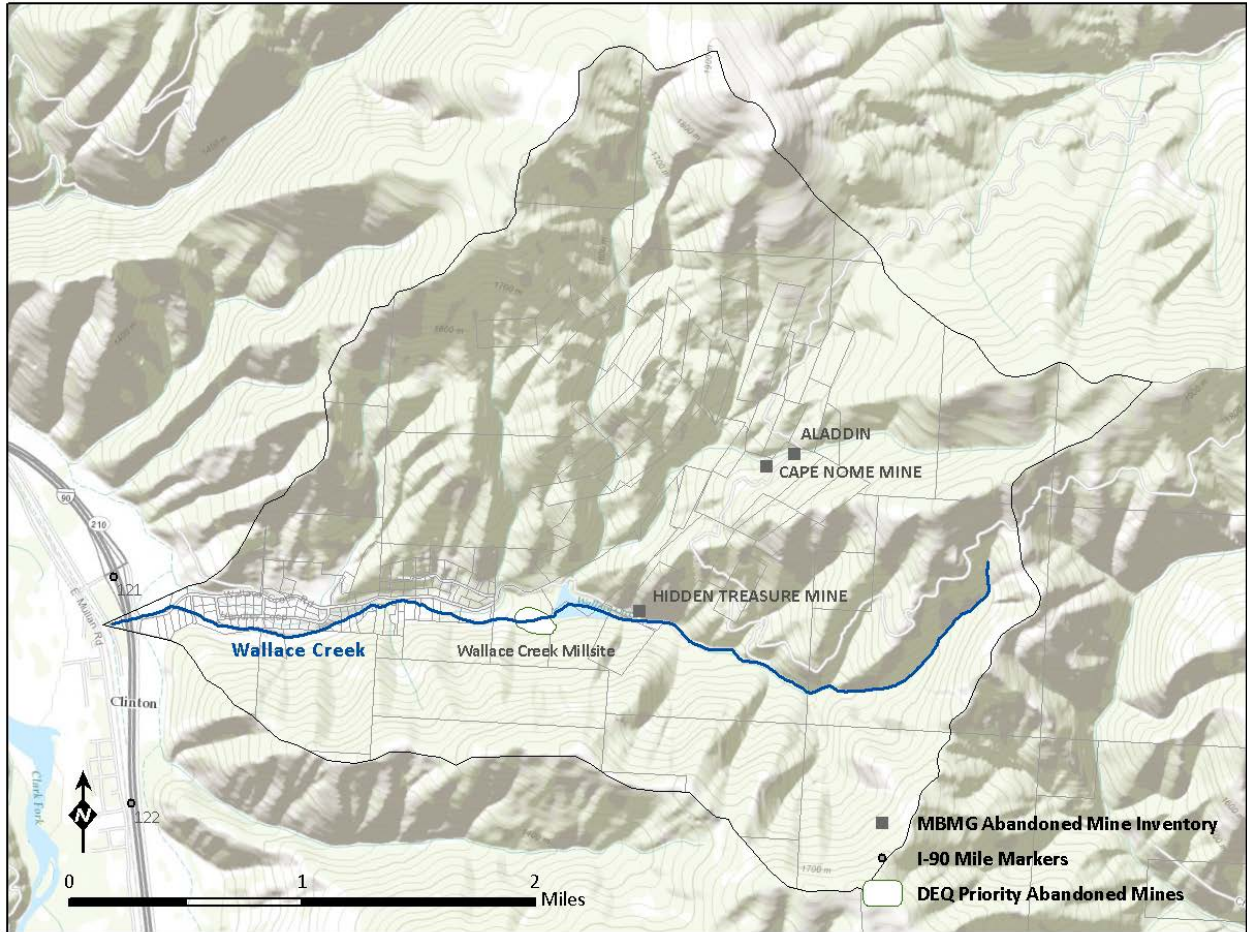


Figure A-17. Wallace Creek Abandoned Mines

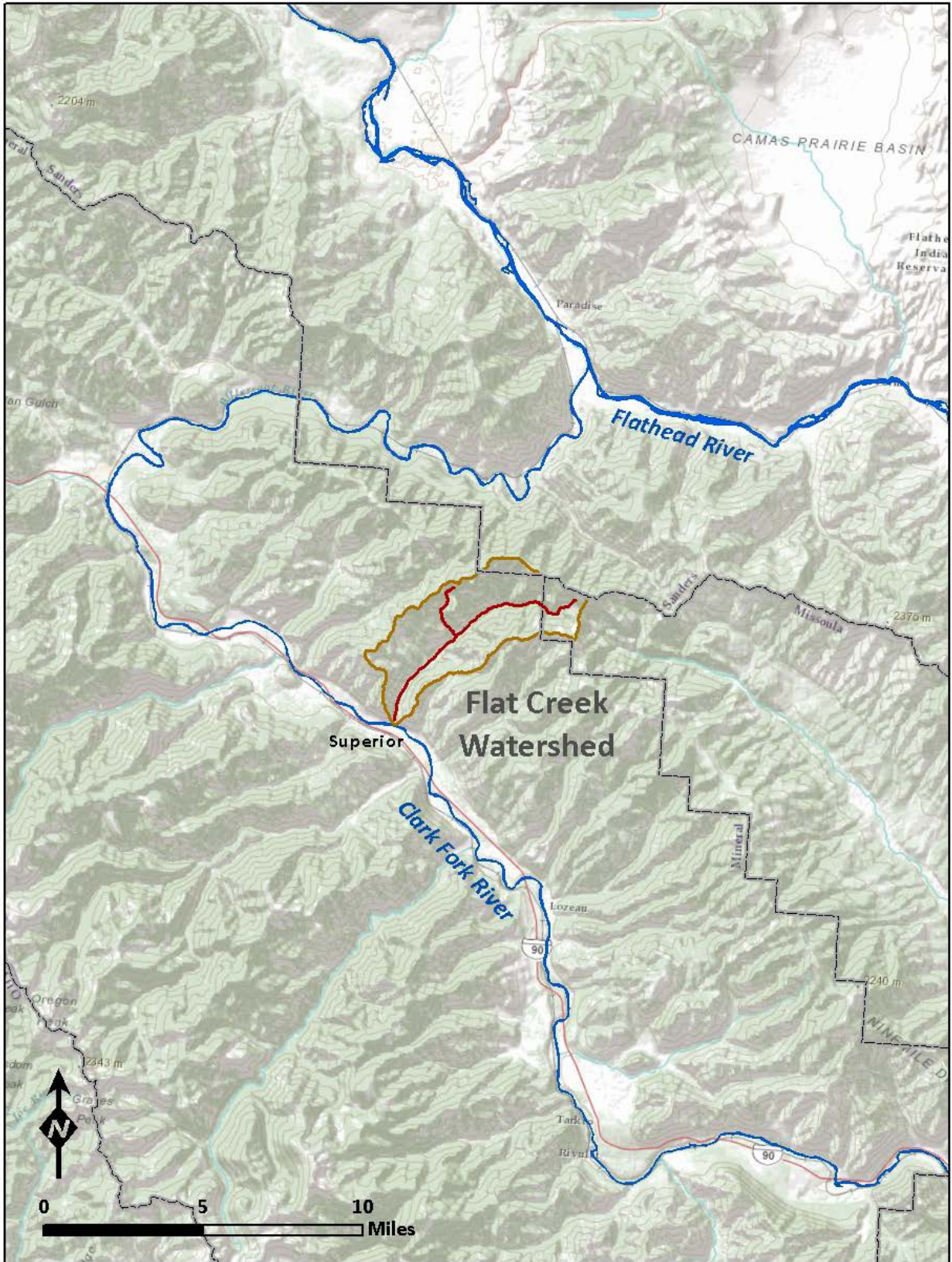


Figure A-18. Flat Creek Location

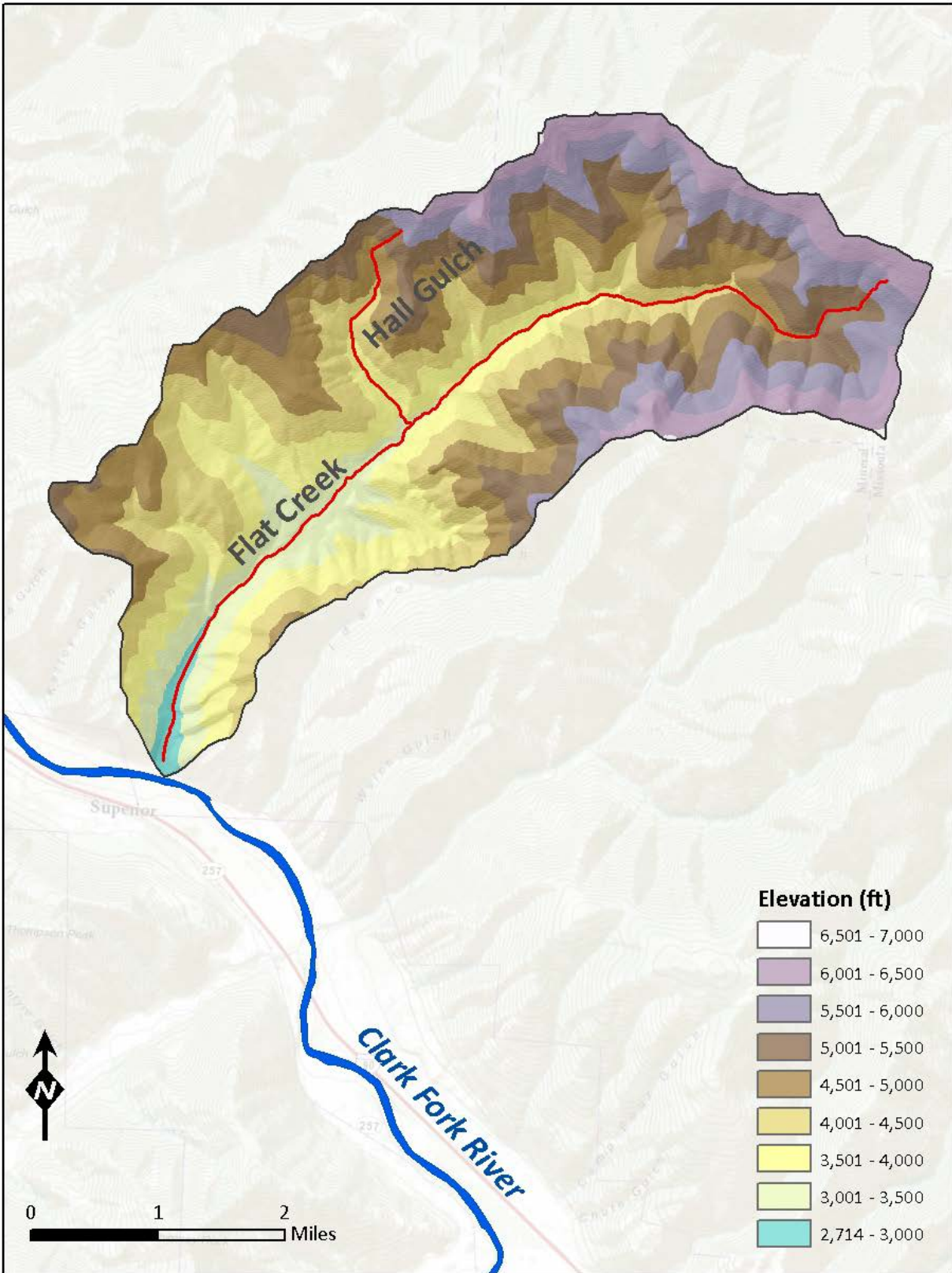


Figure A-19. Flat Creek Topography and Elevation

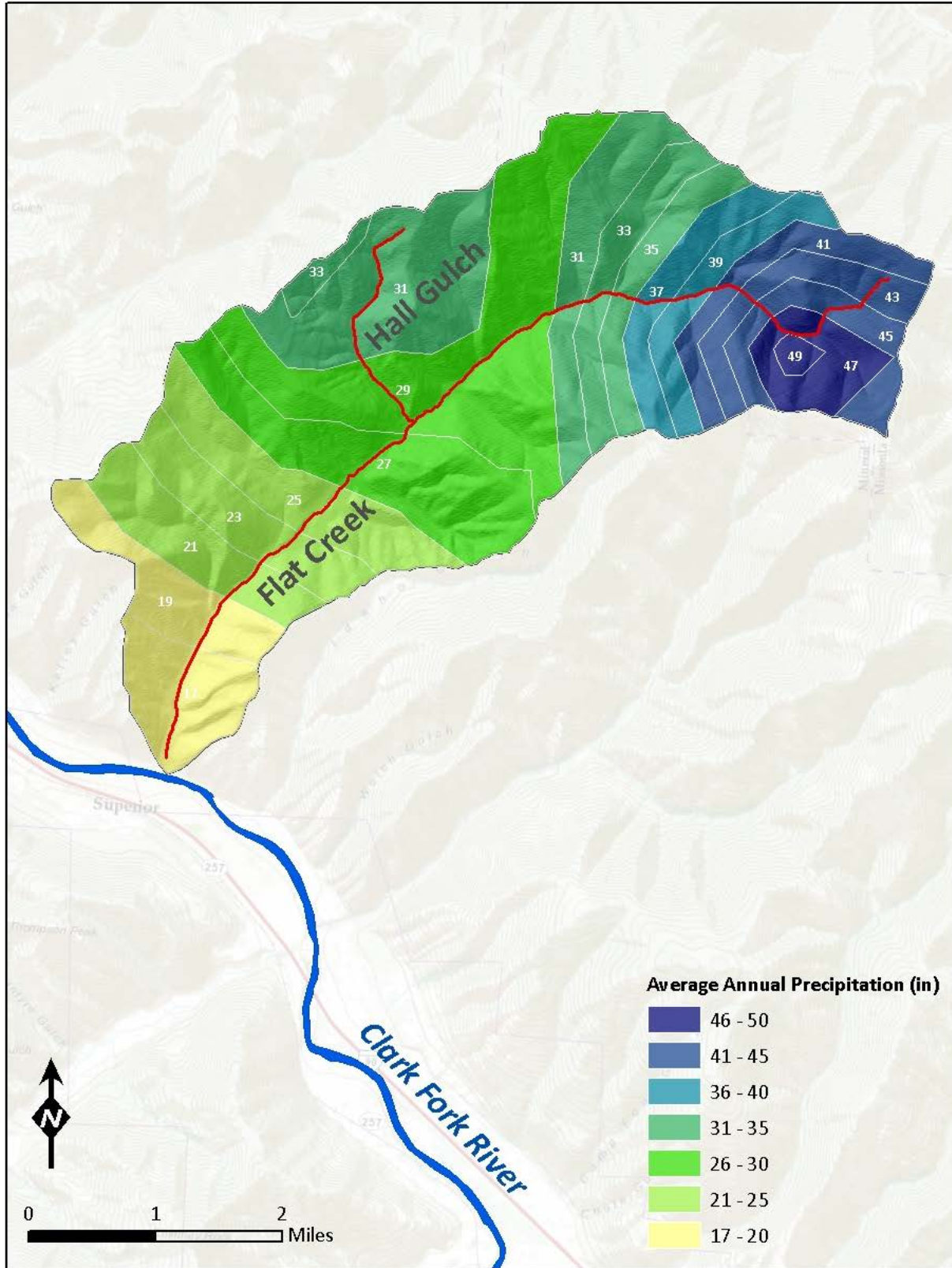


Figure A-20. Flat Creek Average Annual Precipitation

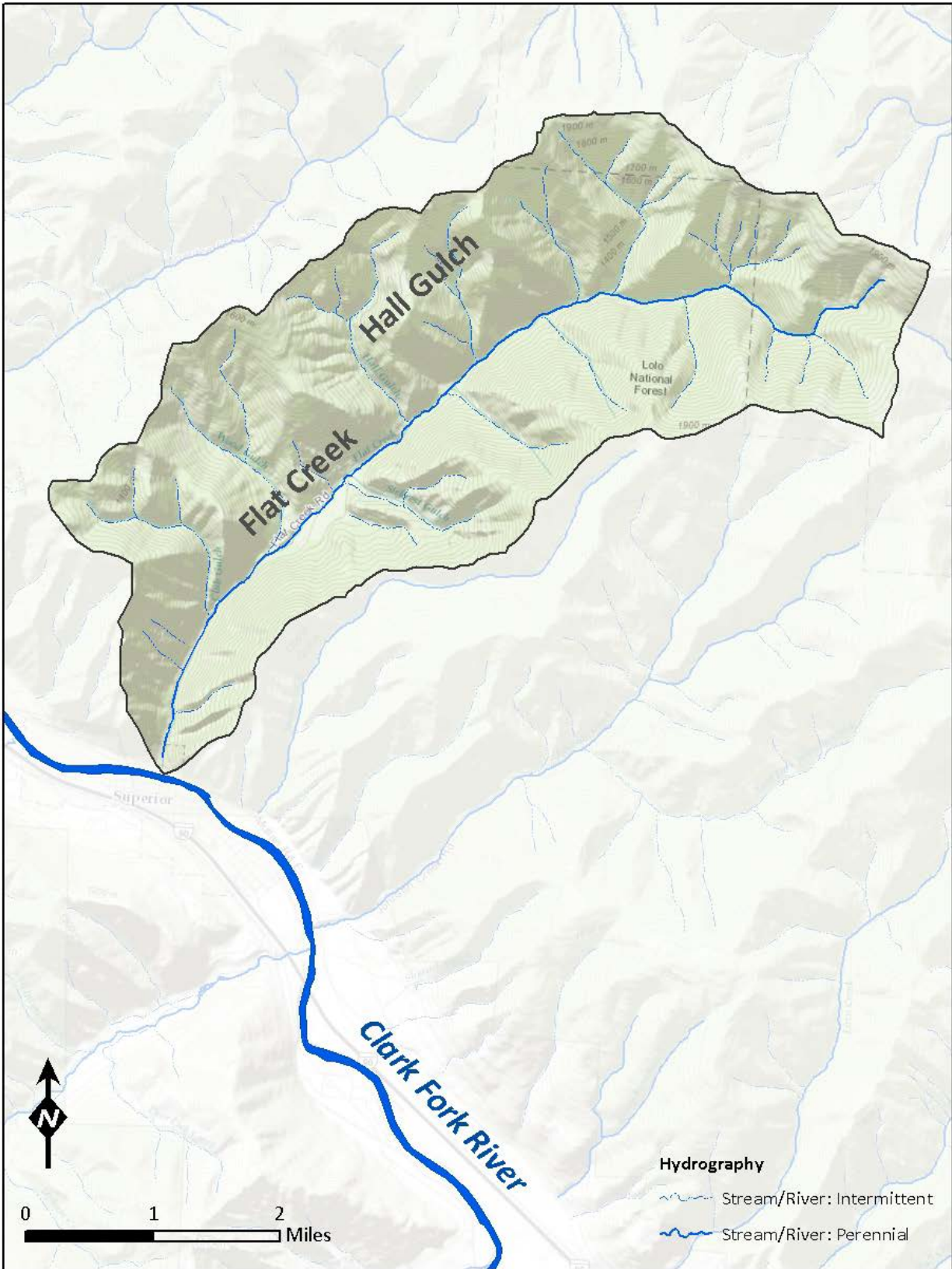


Figure A-21. Flat Creek Hydrography

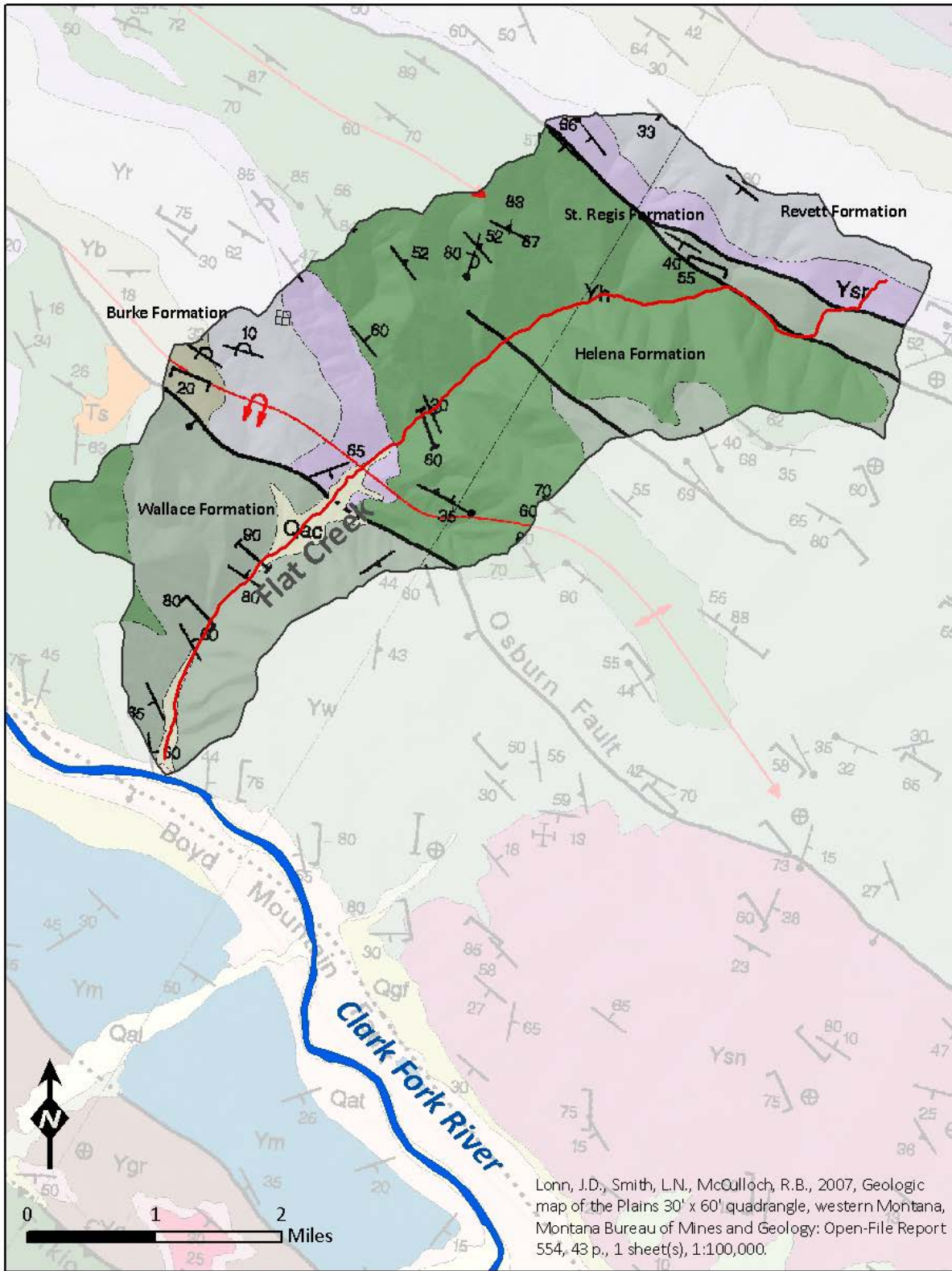


Figure A-22. Flat Creek Geology

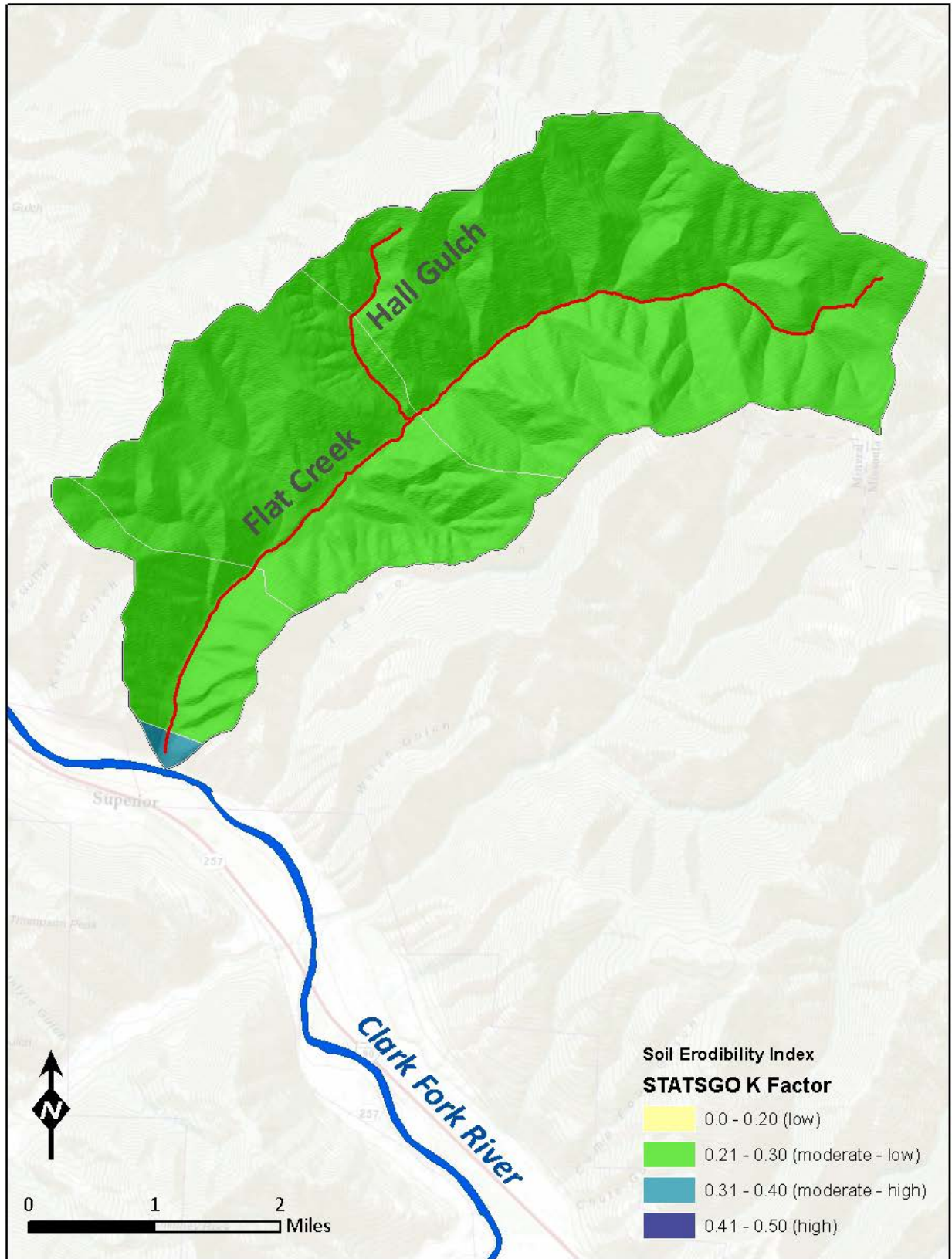


Figure A-23. Flat Creek Soil Erodibility

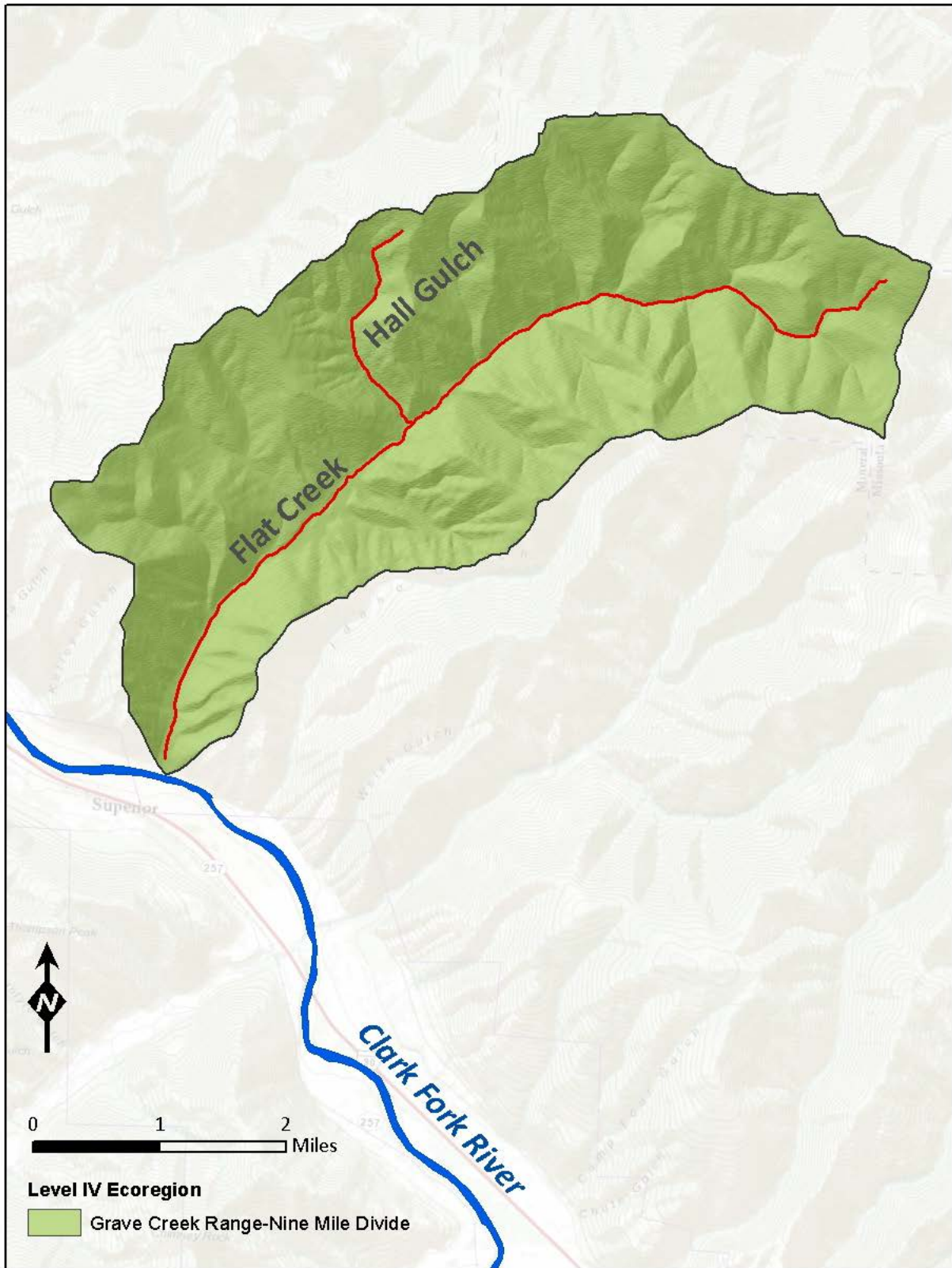


Figure A-24. Flat Creek Level IV Ecoregions

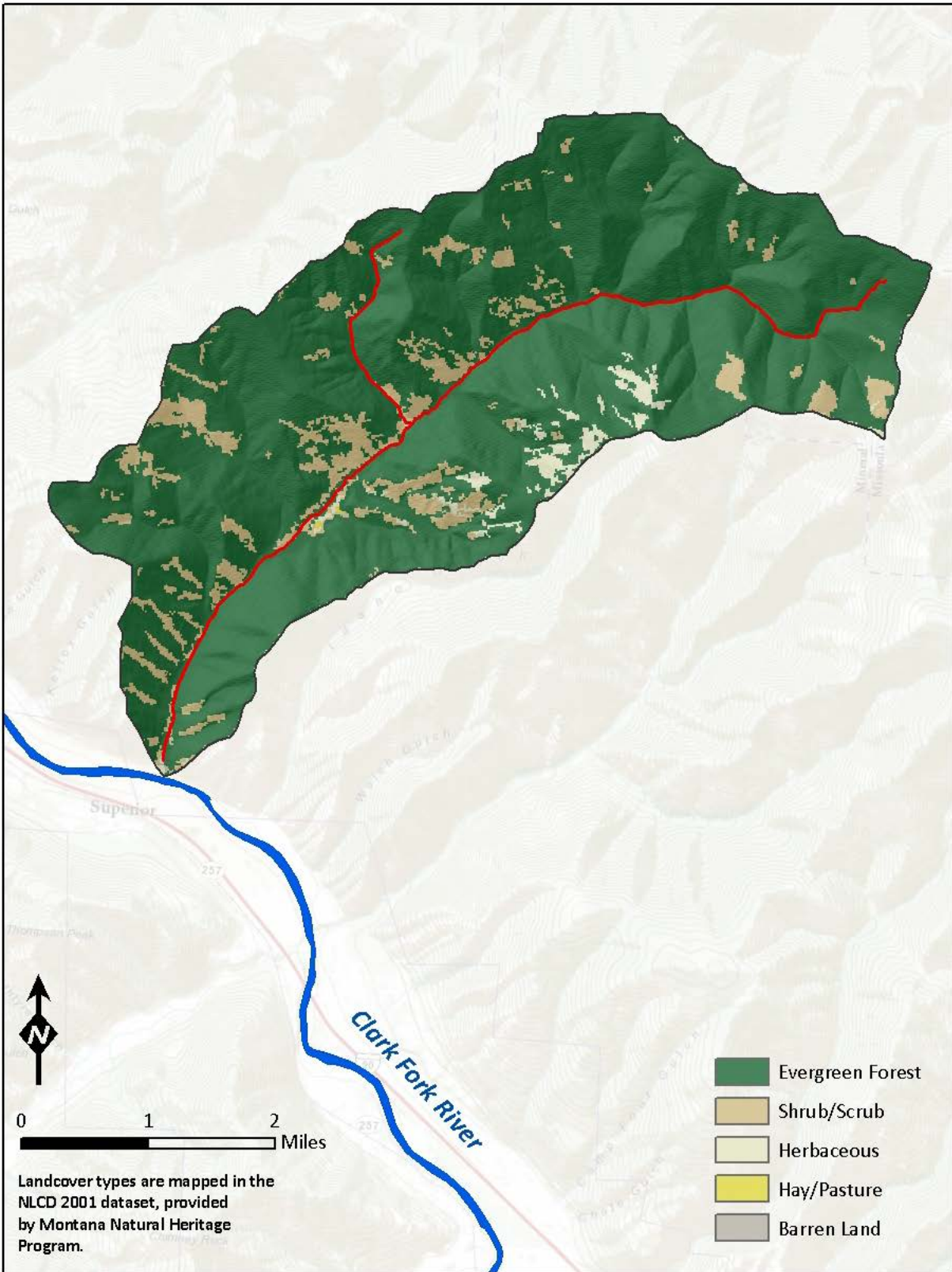


Figure A-25. Flat Creek Land Use and Land Cover

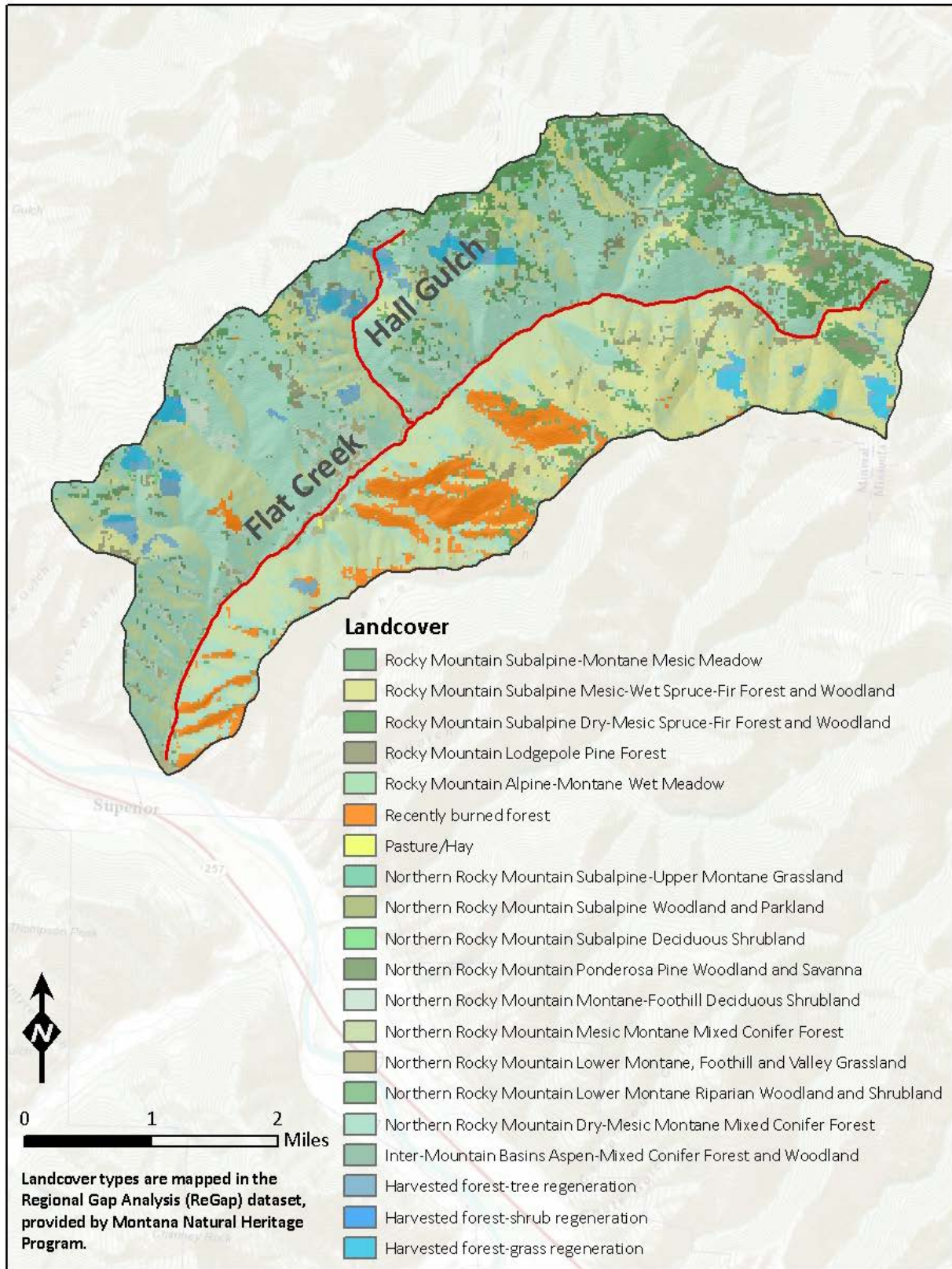


Figure A-26. Flat Creek Land Cover: Regional GAP

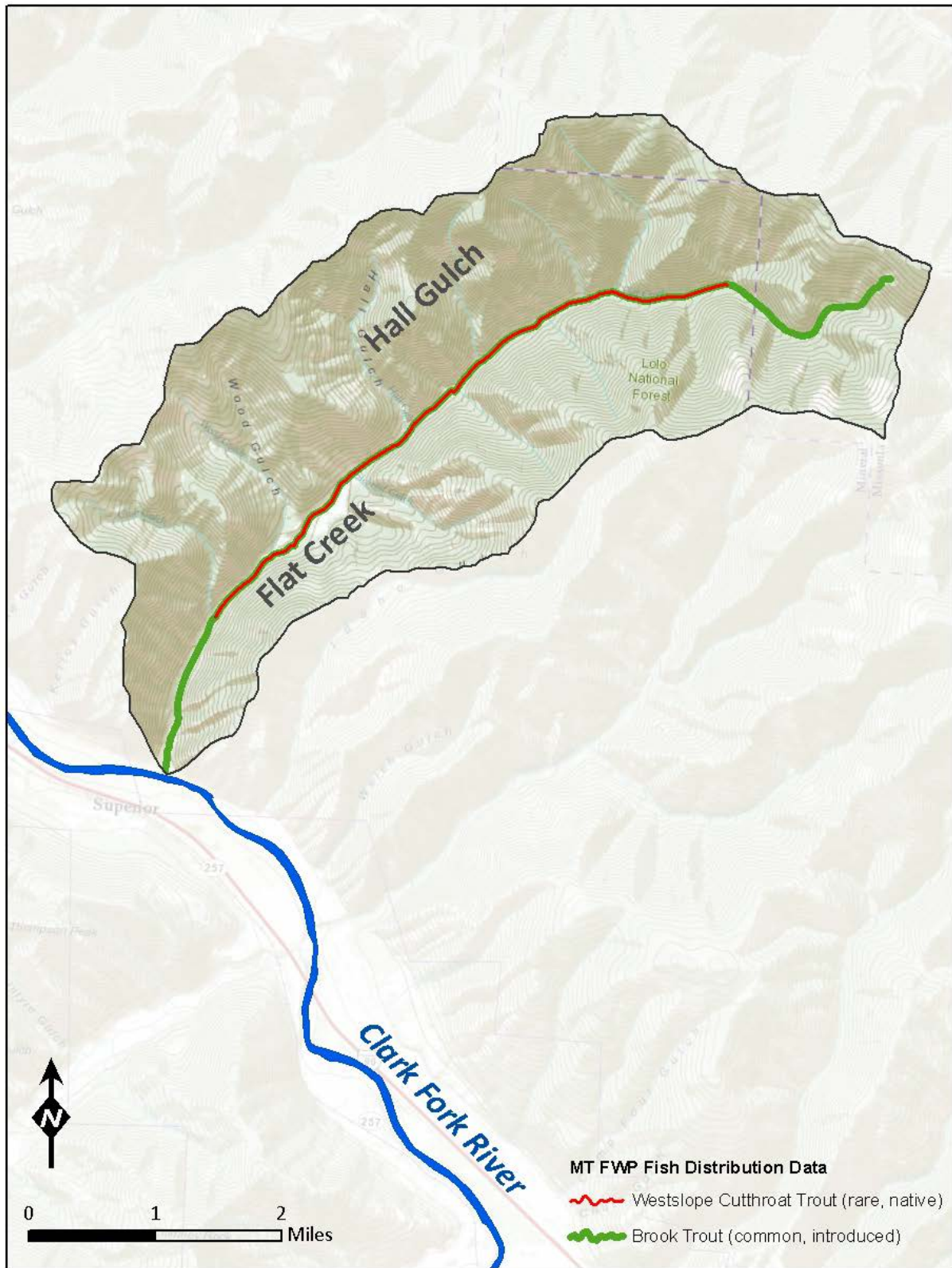


Figure A-27. Flat Creek Fish Distribution

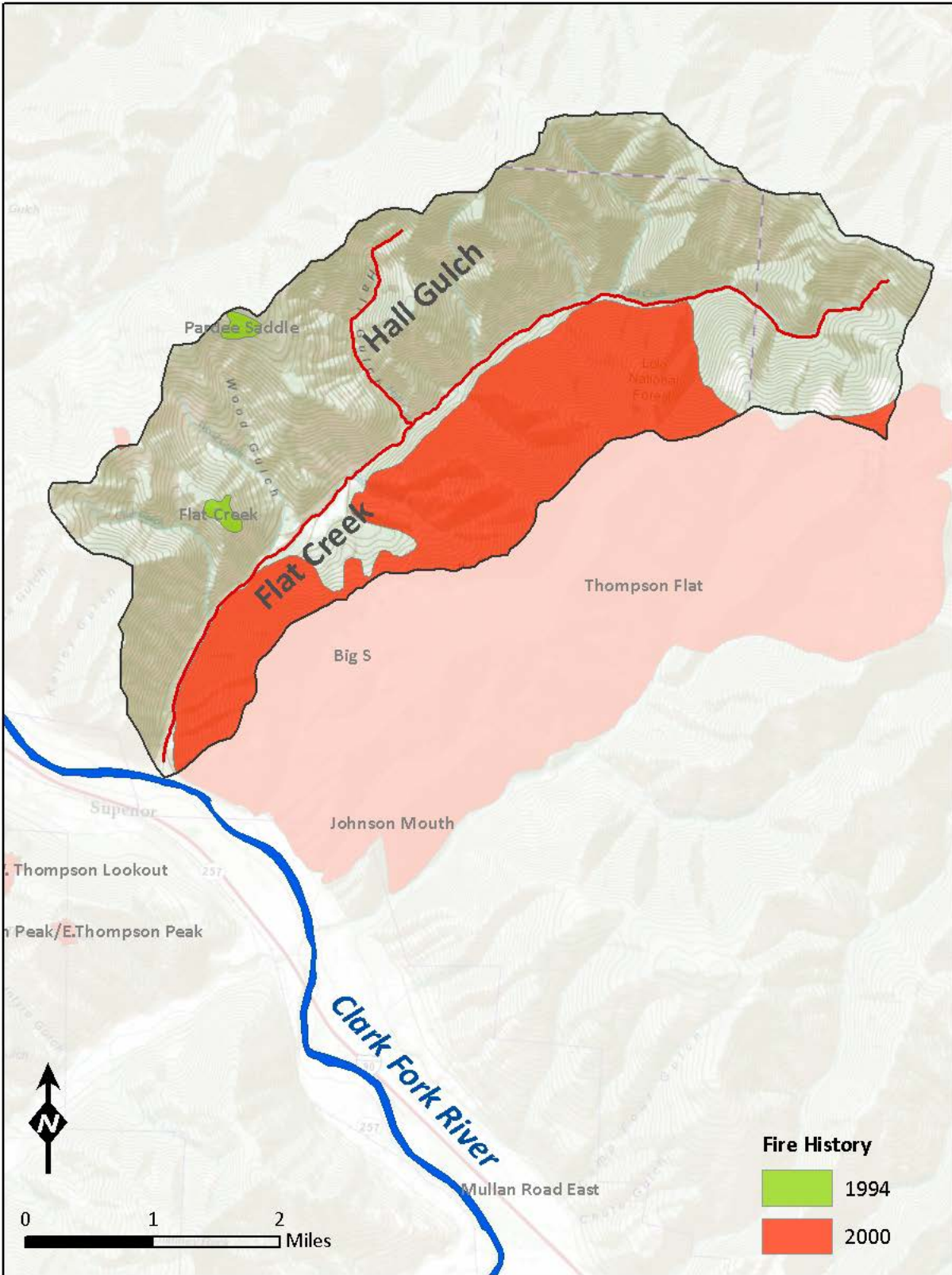


Figure A-28. Flat Creek Fire History

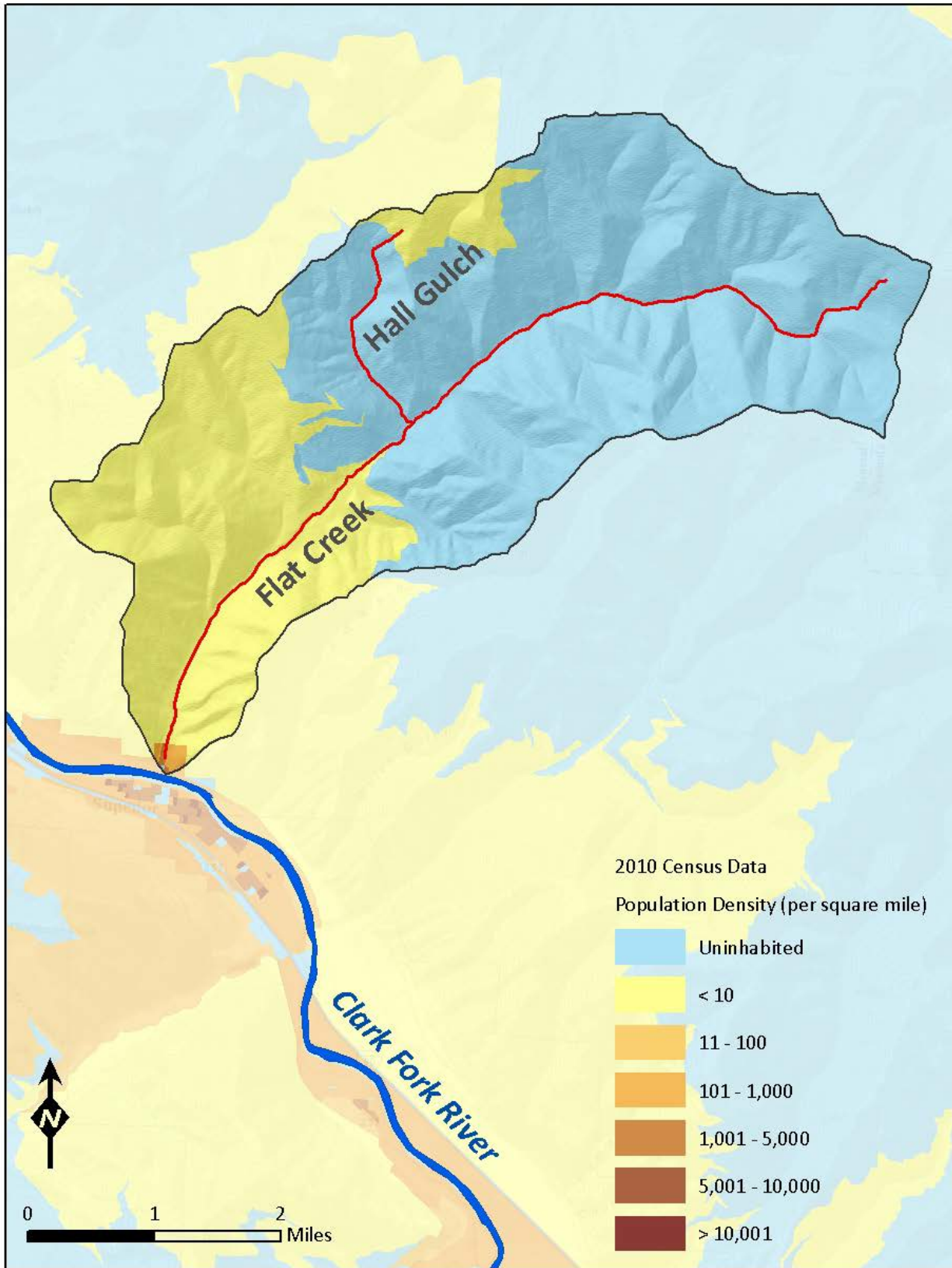


Figure A-29. Flat Creek Population Density: 2010 Census

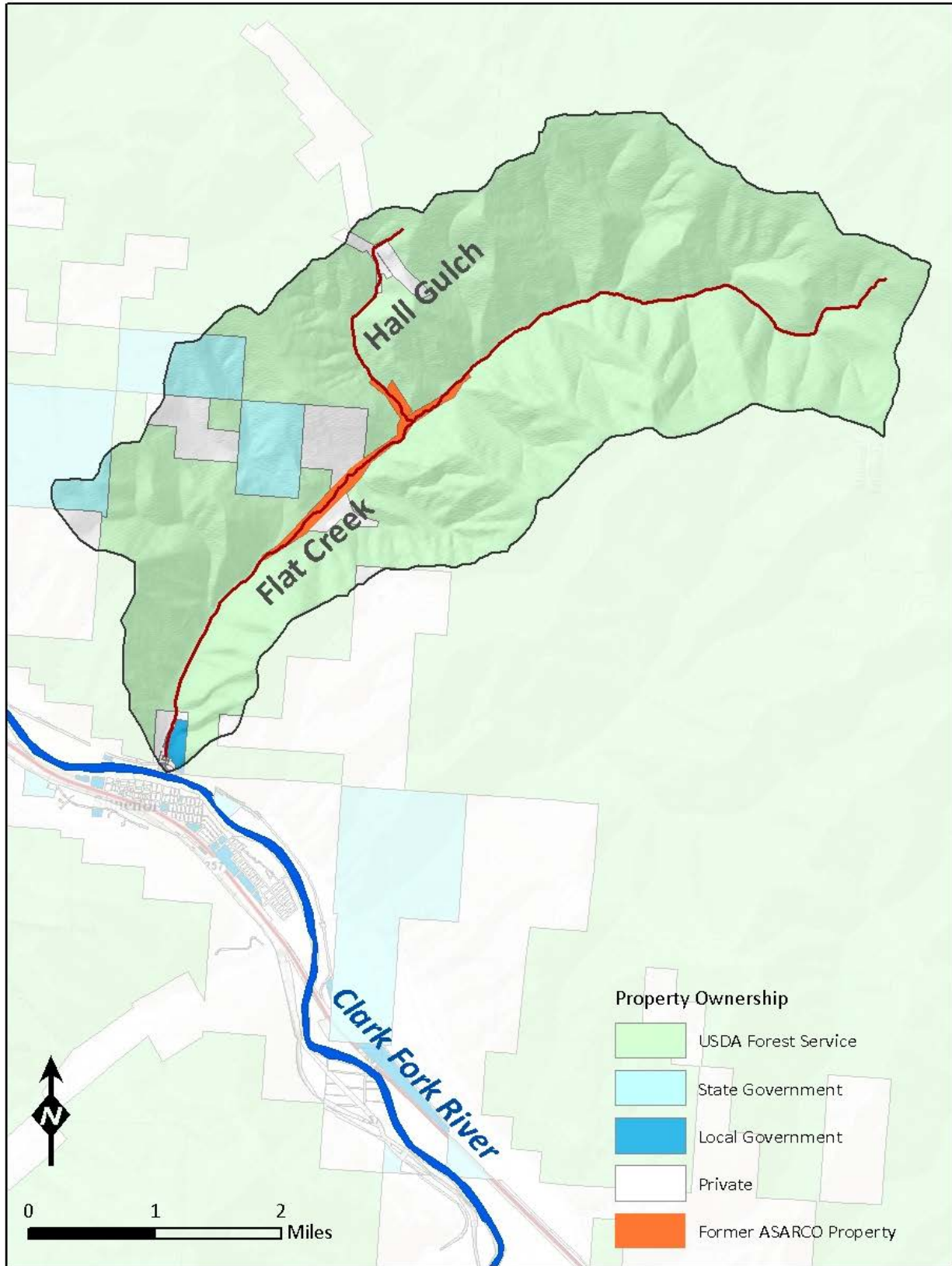


Figure A-30. Flat Creek Land Ownership

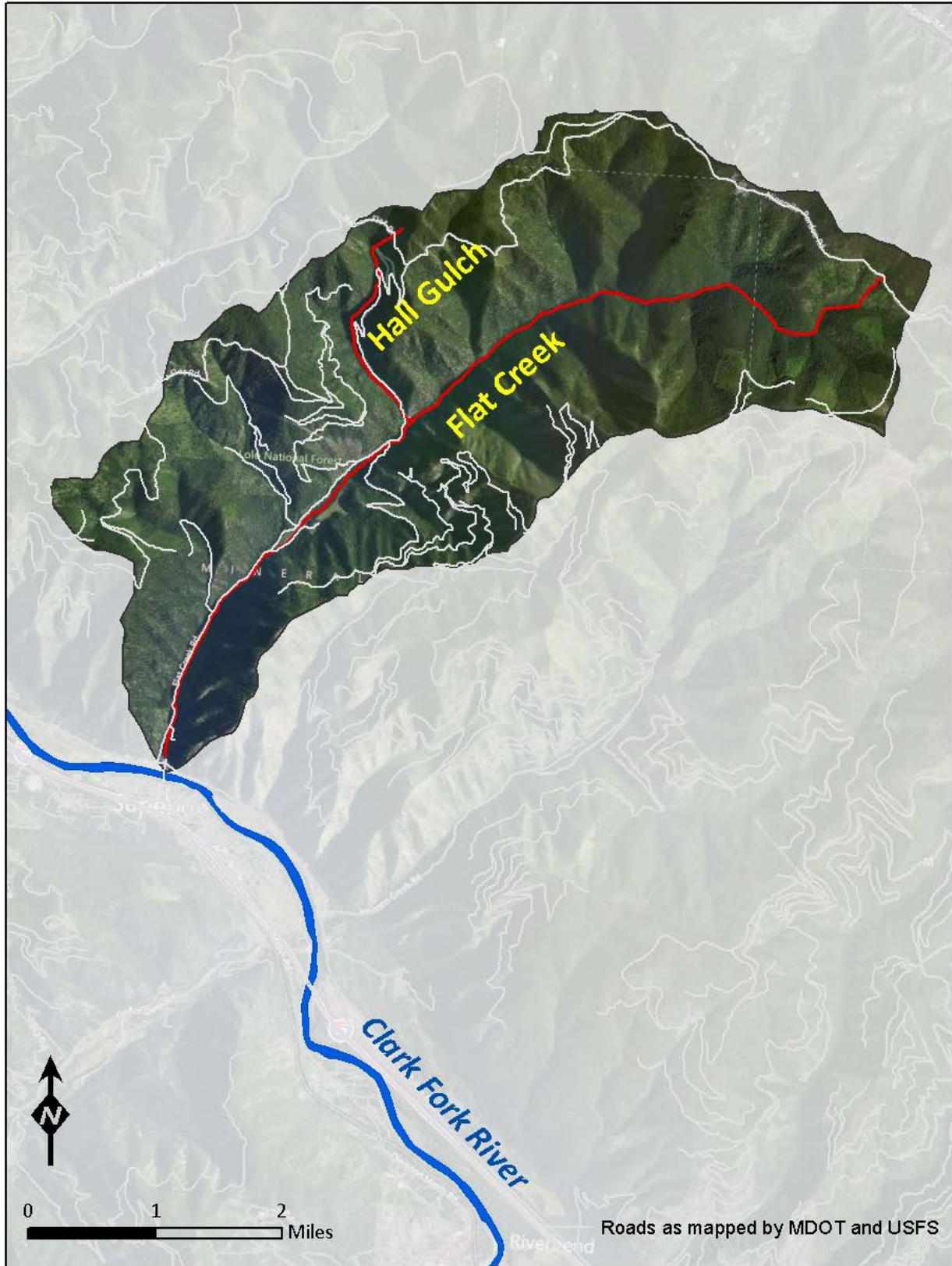


Figure A-31. Flat Creek Roads

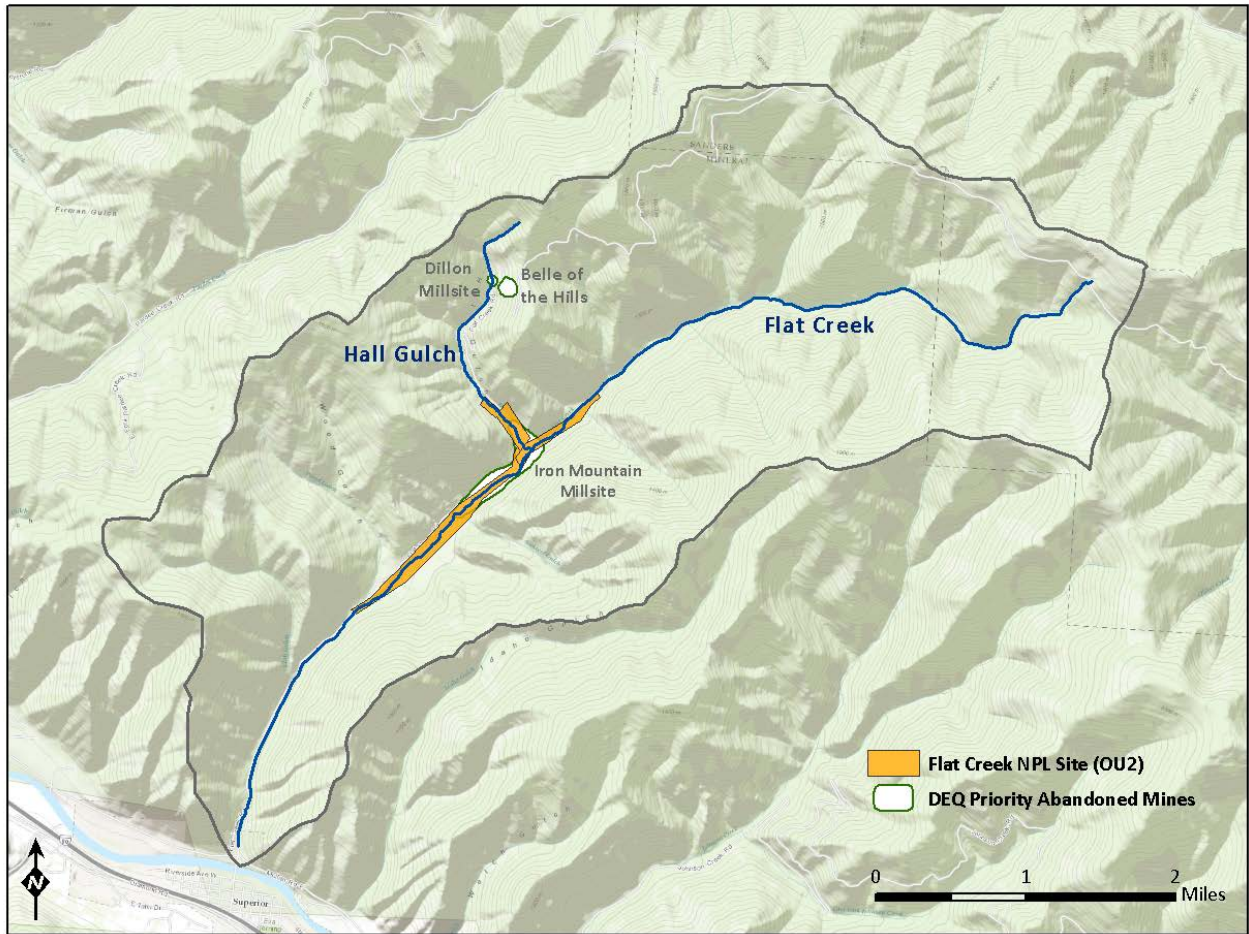


Figure A-32. Flat Creek Abandoned Mines