

APPENDIX A – TABLES AND FIGURES

LIST OF TABLES

Table A-1. Status of waterbody impairments in the TMDL planning areas within the Bitterroot watershed, based on the 2014 Integrated Report	3
--	---

LIST OF FIGURES

Figure A-1. Location of Bitterroot Watershed Project Area	10
Figure A-2. TMDL Planning Areas (TPAs) within the Bitterroot Watershed Project Area	11
Figure A-3. Elevation of the Bitterroot Watershed Project Area	12
Figure A-4. Slope of the Bitterroot Watershed Project Area	13
Figure A-5. Geologic units and abandoned mines of the Bitterroot Watershed Project Area	14
Figure A-6. Geologic rock types of the Bitterroot Watershed Project Area	15
Figure A-7. Soil orders of the Bitterroot Watershed Project Area	16
Figure A-8. Soil erodibility values of the Bitterroot Watershed Project Area	17
Figure A-9. Surface water hydrography of the Bitterroot Watershed Project Area	18
Figure A-10. Groundwater wells in the Bitterroot Watershed Project Area	19
Figure A-11. Precipitation averages in the Bitterroot Watershed Project Area	20
Figure A-12. Ecoregions of the Bitterroot Watershed Project Area	21
Figure A-13. Fire history of the Bitterroot Watershed Project Area	22
Figure A-14. Fish species of concern in the Bitterroot Watershed Project Area	23
Figure A-15. Population density of the Bitterroot Watershed Project Area	24
Figure A-16. Individual septic systems of the Bitterroot Watershed Project Area	25
Figure A-17. Land ownership of the Bitterroot Watershed Project Area	26
Figure A-18. Land cover of the Bitterroot Watershed Project Area	27

Table A-1. Status of waterbody impairments in the TMDL planning areas within the Bitterroot watershed, based on the 2014 Integrated Report

Waterbody & Location Description	Waterbody ID	Impairment Cause	TMDL Pollutant Category	Impairment Cause Status *
¹ Ambrose Creek , headwaters to mouth (Threemile Creek)	MT76H004_120	Nitrogen (Total)	Nutrients	Addressed by a TN TMDL in this document
		Phosphorus (Total)	Nutrients	Addressed by a TP TMDL in this document
		Physical substrate habitat alterations	Not Applicable; Non-Pollutant	Addressed by a sediment TMDL in a previous document (2011)
		Sedimentation/Siltation	Sediment	Addressed by a sediment TMDL in a previous document (2011)
¹ Bass Creek , Selway-Bitterroot Wilderness boundary to mouth (un-named channel of Bitterroot River)	MT76H004_010	Low flow alterations	Not Applicable; Non-Pollutant	Addressed in Section 8 of this document
		Nitrogen (Total)	Nutrients	Addressed by a TN TMDL in this document
		Phosphorus (Total)	Nutrients	Addressed by a TP TMDL in this document
		Sedimentation/Siltation	Sediment	Addressed by a sediment TMDL in a previous document (2011)
¹ Bear Creek , Selway-Bitterroot Wilderness boundary to mouth (Fred Burr Creek)	MT76H004_031	Low flow alterations	Not Applicable; Non-Pollutant	Addressed in Section 8 of this document
¹ Bitterroot River , East and West forks to Skalkaho Creek	MT76H001_010	Alteration in stream-side or littoral vegetative covers	Not Applicable; Non-Pollutant	Addressed in Section 8 of this document
¹ Bitterroot River , Skalkaho Creek to Eightmile Creek	MT76H001_020	Low flow alterations	Not Applicable; Non-Pollutant	Addressed in Section 8 of this document
		Sedimentation/Siltation	Sediment	Not impaired based on updated assessment
		Temperature, water	Temperature	Addressed by a temperature TMDL in a previous document (2011)
¹ Bitterroot River , Eightmile Creek to mouth (Clark Fork River)	MT76H001_030	Alteration in stream-side or littoral vegetative covers	Not Applicable; Non-Pollutant	Addressed by a temperature TMDL in a previous document (2011)
		Lead	Metals	Addressed by a lead TMDL in this document
		Sedimentation/Siltation	Sediment	Not impaired based on updated assessment
		Temperature, water	Temperature	Addressed by a temperature TMDL in a previous document (2011)
¹ Blodgett Creek , Selway-Bitterroot Wilderness boundary to mouth (Bitterroot River)	MT76H004_050	Low flow alterations	Not Applicable; Non-Pollutant	Addressed in Section 8 of this document
² Buck Creek , headwaters to mouth (West Fork Bitterroot)	MT76H003_070	Sedimentation/Siltation	Sediment	Addressed by a sediment TMDL in a previous document (2005)

Table A-1. Status of waterbody impairments in the TMDL planning areas within the Bitterroot watershed, based on the 2014 Integrated Report

Waterbody & Location Description	Waterbody ID	Impairment Cause	TMDL Pollutant Category	Impairment Cause Status *
² Ditch Creek, headwaters to mouth (West Fork Bitterroot River)	MT76H003_060	Sedimentation/Siltation	Sediment	Addressed by a sediment TMDL in a previous document (2005)
² East Fork Bitterroot River, Anaconda-Pintlar Wilderness boundary to mouth (Bitterroot River)	MT76H002_010	Alteration in stream-side or littoral vegetative covers	Not Applicable; Non-Pollutant	Addressed by a sediment TMDL in a previous document (2005)
		Sedimentation/Siltation	Sediment	Addressed by a sediment TMDL in a previous document (2005)
		Temperature, water	Temperature	Addressed by a temperature TMDL in a previous document (2005)
³ East Fork Lolo Creek, headwaters to mouth (Confluence with Lolo Creek)	MT76H005_040	Alteration in stream-side or littoral vegetative covers	Not Applicable; Non-Pollutant	Addressed by a sediment TMDL in a previous document (2003)
		Fish-Passage Barrier	Not Applicable; Non-Pollutant	Addressed by a sediment TMDL in a previous document (2003)
		Sedimentation/Siltation	Sediment	Addressed by a sediment TMDL in a previous document (2003)
² Gilbert Creek, headwaters to mouth (Laird Creek)	MT76H002_080	Alteration in stream-side or littoral vegetative covers	Not Applicable; Non-Pollutant	Addressed by a sediment TMDL in a previous document (2005)
		Sedimentation/Siltation	Sediment	Addressed by a sediment TMDL in a previous document (2005)
³ Granite Creek, headwaters to mouth (Lolo Creek)	MT76H005_030	Alteration in stream-side or littoral vegetative covers	Not Applicable; Non-Pollutant	Addressed by a sediment TMDL in a previous document (2003)
		Fish-Passage Barrier	Not Applicable; Non-Pollutant	Addressed by a sediment TMDL in a previous document (2003)
		Sedimentation/Siltation	Sediment	Addressed by a sediment TMDL in a previous document (2003)
² Hughes Creek, headwaters to the mouth (West Fork Bitterroot River)	MT76H003_040	Alteration in stream-side or littoral vegetative covers	Not Applicable; Non-Pollutant	Addressed by a sediment TMDL in a previous document (2005)
		Physical substrate habitat alterations	Not Applicable; Non-Pollutant	Addressed by a sediment TMDL in a previous document (2005)
		Sedimentation/Siltation	Sediment	Addressed by a sediment TMDL in a previous document (2005)
		Temperature, water	Temperature	Addressed by a temperature TMDL in a previous document (2005)

Table A-1. Status of waterbody impairments in the TMDL planning areas within the Bitterroot watershed, based on the 2014 Integrated Report

Waterbody & Location Description	Waterbody ID	Impairment Cause	TMDL Pollutant Category	Impairment Cause Status *
¹ Kootenai Creek, Selway-Bitterroot Wilderness boundary to mouth (Bitterroot River)	MT76H004_020	Alteration in stream-side or littoral vegetative covers	Not Applicable; Non-Pollutant	Addressed in Section 8 of this document
		Low flow alterations	Not Applicable; Non-Pollutant	Addressed in section 8 of this document
² Laird Creek, headwaters to mouth (East Fork Bitterroot River)	MT76H002_070	Alteration in stream-side or littoral vegetative covers	Not Applicable; Non-Pollutant	Addressed by a sediment TMDL in a previous document (2005)
		Sedimentation/Siltation	Sediment	Addressed by a sediment TMDL in a previous document (2005)
³ Lee Creek, headwaters to mouth (West Fork Lolo Creek)	MT76H005_070	Alteration in stream-side or littoral vegetative covers	Not Applicable; Non-Pollutant	Addressed by a sediment TMDL in a previous document (2003)
		Sedimentation/Siltation	Sediment	Addressed by a sediment TMDL in a previous document (2003)
¹ Lick Creek, headwaters to mouth (Bitterroot River)	MT76H004_170	Alteration in stream-side or littoral vegetative covers	Not Applicable; Non-Pollutant	Addressed by a sediment TMDL in a previous document (2011)
		Aluminum	Metals	Addressed by an aluminum TMDL in this document
		Chlorophyll-a	Not Applicable; Non-Pollutant	Addressed by a TP TMDL in this document
		Phosphorus (Total)	Nutrients	Addressed by a TP TMDL in this document
		Sedimentation/Siltation	Sediment	Addressed by a sediment TMDL in a previous document (2011)
¹ Lolo Creek, Mormon Creek to mouth (Bitterroot River)	MT76H005_011	Low flow alterations	Not Applicable; Non-Pollutant	Addressed in Section 8 of this document
		Physical substrate habitat alterations	Not Applicable; Non-Pollutant	Addressed by a sediment TMDL in a previous document (2011)
		Sedimentation/Siltation	Sediment	Addressed by a sediment TMDL in a previous document (2011)
¹ Lolo Creek, Sheldon Creek to Mormon Creek	MT76H005_012	Physical substrate habitat alterations	Not Applicable; Non-Pollutant	Addressed by a sediment TMDL in a previous document (2011)
		Sedimentation/Siltation	Sediment	Addressed by a sediment TMDL in a previous document (2011)

Table A-1. Status of waterbody impairments in the TMDL planning areas within the Bitterroot watershed, based on the 2014 Integrated Report

Waterbody & Location Description	Waterbody ID	Impairment Cause	TMDL Pollutant Category	Impairment Cause Status *
¹ Lolo Creek, headwaters to Sheldon Creek	MT76H005_013	Physical substrate habitat alterations	Not Applicable; Non-Pollutant	Addressed by a sediment TMDL in a previous document (2011)
		Sedimentation/Siltation	Sediment	Addressed by a sediment TMDL in a previous document (2011)
¹ Lost Horse Creek, headwaters to mouth (Bitterroot River)	MT76H004_070	Low flow alterations	Not Applicable; Non-Pollutant	Addressed in Section 8 of this document
³ Lost Park Creek, headwaters to mouth (Confluence with East Fork Lolo Creek)	MT76H005_060	Alteration in stream-side or littoral vegetative covers	Not Applicable; Non-Pollutant	Addressed by a sediment TMDL in a previous document (2003)
		Fish-Passage Barrier	Not Applicable; Non-Pollutant	Addressed by a sediment TMDL in a previous document (2003)
		Sedimentation/Siltation	Sediment	Addressed by a sediment TMDL in a previous document (2003)
¹ McClain Creek, headwaters to mouth (Sin-tin-tin-em-ska Creek)	MT76H004_150	Sedimentation/Siltation	Sediment	Addressed by a sediment TMDL in a previous document (2011)
¹ Mill Creek, Selway-Bitterroot Wilderness boundary to the mouth (Fred Burr Creek)	MT76H004_040	Alteration in stream-side or littoral vegetative covers	Not Applicable; Non-Pollutant	Addressed by a temperature TMDL in this document
		Low flow alterations	Not Applicable; Non-Pollutant	Addressed in Section 8 of this document
		Temperature, water	Temperature	Addressed by a temperature TMDL in this document
¹ Miller Creek, headwaters to mouth (Bitterroot River)	MT76H004_130	Alteration in stream-side or littoral vegetative covers	Not Applicable; Non-Pollutant	Addressed by a sediment TMDL in a previous document (2011)
		Chlorophyll-a	Not Applicable; Non-Pollutant	Not impaired based on updated assessment
		Nitrate/Nitrite (Nitrite + Nitrate as N)	Nutrients	Not impaired based on updated assessment
		Nitrogen (Total)	Nutrients	Not impaired based on updated assessment
		Phosphorus (Total)	Nutrients	Not impaired based on updated assessment
		Sedimentation/Siltation	Sediment	Addressed by a sediment TMDL in a previous document (2011)
		Temperature, water	Temperature	Addressed by a temperature TMDL in a previous document (2011)

Table A-1. Status of waterbody impairments in the TMDL planning areas within the Bitterroot watershed, based on the 2014 Integrated Report

Waterbody & Location Description	Waterbody ID	Impairment Cause	TMDL Pollutant Category	Impairment Cause Status *
¹ Muddy Spring Creek , headwaters to mouth (Gold Creek)	MT76H004_180	Nitrate/Nitrite (Nitrite + Nitrate as N)	Nutrients	Addressed by a NO ₂ + NO ₃ TMDL in this document
		Sedimentation/Siltation	Sediment	Addressed by a sediment TMDL in a previous document (2011)
² Nez Perce Fork Bitterroot River , headwaters to mouth (West Fork Bitterroot River)	MT76H003_020	Temperature, water	Temperature	Addressed by a temperature TMDL in a previous document (2005)
¹ North Burnt Fork Creek , confluence with South Burnt Fork Creek to Mouth (Bitterroot River)	MT76H004_200	Bottom Deposits	Sediment	Addressed by a sediment TMDL in a previous document (2011)
		Nitrogen (Total)	Nutrients	Addressed by a TN TMDL in this document
		Phosphorus (Total)	Nutrients	Addressed by a TP TMDL in this document
¹ North Channel Bear Creek , headwaters to mouth (Fred Burr Creek)	MT76H004_032	Low flow alterations	Not Applicable; Non-Pollutant	Addressed in Section 8 of this document
¹ North Fork Rye Creek , headwaters to mouth (Rye Creek-Bitterroot River, South of Darby)	MT76H004_160	Alteration in stream-side or littoral vegetative covers	Not Applicable; Non-Pollutant	Addressed by TN and TP TMDLs in this document
		Nitrogen (Total)	Nutrients	Addressed by a TN TMDL in this document
		Phosphorus (Total)	Nutrients	Addressed by a TP TMDL in this document
² Overwhich Creek , headwaters to mouth (West Fork Bitterroot River)	MT76H003_050	Temperature, water	Temperature	Addressed by a temperature TMDL in a previous document (2005)
² Reimel Creek , headwaters to mouth (East Fork Bitterroot River)	MT76H002_020	Alteration in stream-side or littoral vegetative covers	Not Applicable; Non-Pollutant	Addressed by a sediment TMDL in a previous document (2005)
		Sedimentation/Siltation	Sediment	Addressed by a sediment TMDL in a previous document (2005)
¹ Rye Creek , North Fork to mouth (Bitterroot River)	MT76H004_190	Alteration in stream-side or littoral vegetative covers	Not Applicable; Non-Pollutant	Addressed by a sediment TMDL in a previous document (2011)
		Nitrogen (Total)	Nutrients	Addressed by a TN TMDL in this document
		Phosphorus (Total)	Nutrients	Addressed by a TP TMDL in this document
		Sedimentation/Siltation	Sediment	Addressed by a sediment TMDL in a previous document (2011)
¹ Skalkaho Creek , headwaters to mouth (Bitterroot River)	MT76H004_100	Low flow alterations	Not Applicable; Non-Pollutant	Addressed in Section 8 of this document

Table A-1. Status of waterbody impairments in the TMDL planning areas within the Bitterroot watershed, based on the 2014 Integrated Report

Waterbody & Location Description	Waterbody ID	Impairment Cause	TMDL Pollutant Category	Impairment Cause Status *
¹ Sleeping Child Creek , headwaters to mouth (Bitterroot River)	MT76H004_090	Sedimentation/Siltation	Sediment	Addressed by a sediment TMDL in a previous document (2011)
		Temperature, water	Temperature	Addressed by a temperature TMDL in a previous document (2011)
¹ South Fork Lolo Creek , Selway-Bitterroot Wilderness boundary to mouth (Lolo Creek)	MT76H005_020	Low flow alterations	Not Applicable; Non-Pollutant	Addressed in Section 8 of this document
		Physical substrate habitat alterations	Not Applicable; Non-Pollutant	Addressed in Section 8 of this document
¹ Sweathouse Creek , headwaters to mouth (Bitterroot River)	MT76H004_210	Alteration in stream-side or littoral vegetative covers	Not Applicable; Non-Pollutant	Addressed by a sediment TMDL in a previous document (2011)
		Low flow alterations	Not Applicable; Non-Pollutant	Addressed in Section 8 of this document
		Phosphorus (Total)	Nutrients	Addressed by a TP TMDL in this document
		Sedimentation/Siltation	Sediment	Addressed by a sediment TMDL in a previous document (2011)
¹ Threemile Creek , headwaters to mouth (Bitterroot River)	MT76H004_140	Low flow alterations	Not Applicable; Non-Pollutant	Addressed in Section 8 of this document
		Nitrate/Nitrite (Nitrite + Nitrate as N)	Nutrients	Addressed by a TN TMDL in this document
		Nitrogen (Total)	Nutrients	Addressed by a TN TMDL in this document
		Phosphorus (Total)	Nutrients	Addressed by a TP TMDL in this document
		Sedimentation/Siltation	Sediment	Addressed by a sediment TMDL in a previous document (2011)
¹ Tin Cup Creek , Selway-Bitterroot Wilderness boundary to mouth (Bitterroot River)	MT76H004_080	Alteration in stream-side or littoral vegetative covers	Not Applicable; Non-Pollutant	Addressed in Section 8 of this document
² West Fork Bitterroot River , headwaters to mouth	MT76H003_010	Physical substrate habitat alterations	Not Applicable; Non-Pollutant	Addressed by a sediment TMDL in a previous document (2005)
		Sedimentation/Siltation	Sediment	Addressed by a sediment TMDL in a previous document (2005)
		Temperature, water	Temperature	Addressed by a temperature TMDL in a previous document (2005)

Table A-1. Status of waterbody impairments in the TMDL planning areas within the Bitterroot watershed, based on the 2014 Integrated Report

Waterbody & Location Description	Waterbody ID	Impairment Cause	TMDL Pollutant Category	Impairment Cause Status *
³ West Fork Lolo Creek, headwaters to mouth (Lolo Creek)	MT76H005_050	Alteration in stream-side or littoral vegetative covers	Not Applicable; Non-Pollutant	Addressed by a sediment TMDL in a previous document (2003)
		Sedimentation/Siltation	Sediment	Addressed by a sediment TMDL in a previous document (2003)
¹ Willow Creek, headwaters to mouth (Bitterroot River)	MT76H004_110	Alteration in stream-side or littoral vegetative covers	Not Applicable; Non-Pollutant	Addressed by a sediment TMDL in a previous document (2011)
		Sedimentation/Siltation	Sediment	Addressed by a sediment TMDL in a previous document (2011)
		Temperature, water	Temperature	Addressed by a temperature TMDL in a previous document (2011)

* TN = Total Nitrogen, TP = Total Phosphorus, NO₂ + NO₃ = Nitrite + Nitrate

¹Waterbody is part of the Bitterroot TPA, ²Waterbody is part of the Bitterroot Headwaters TPA, ³Waterbody is part of the Upper Lolo TPA

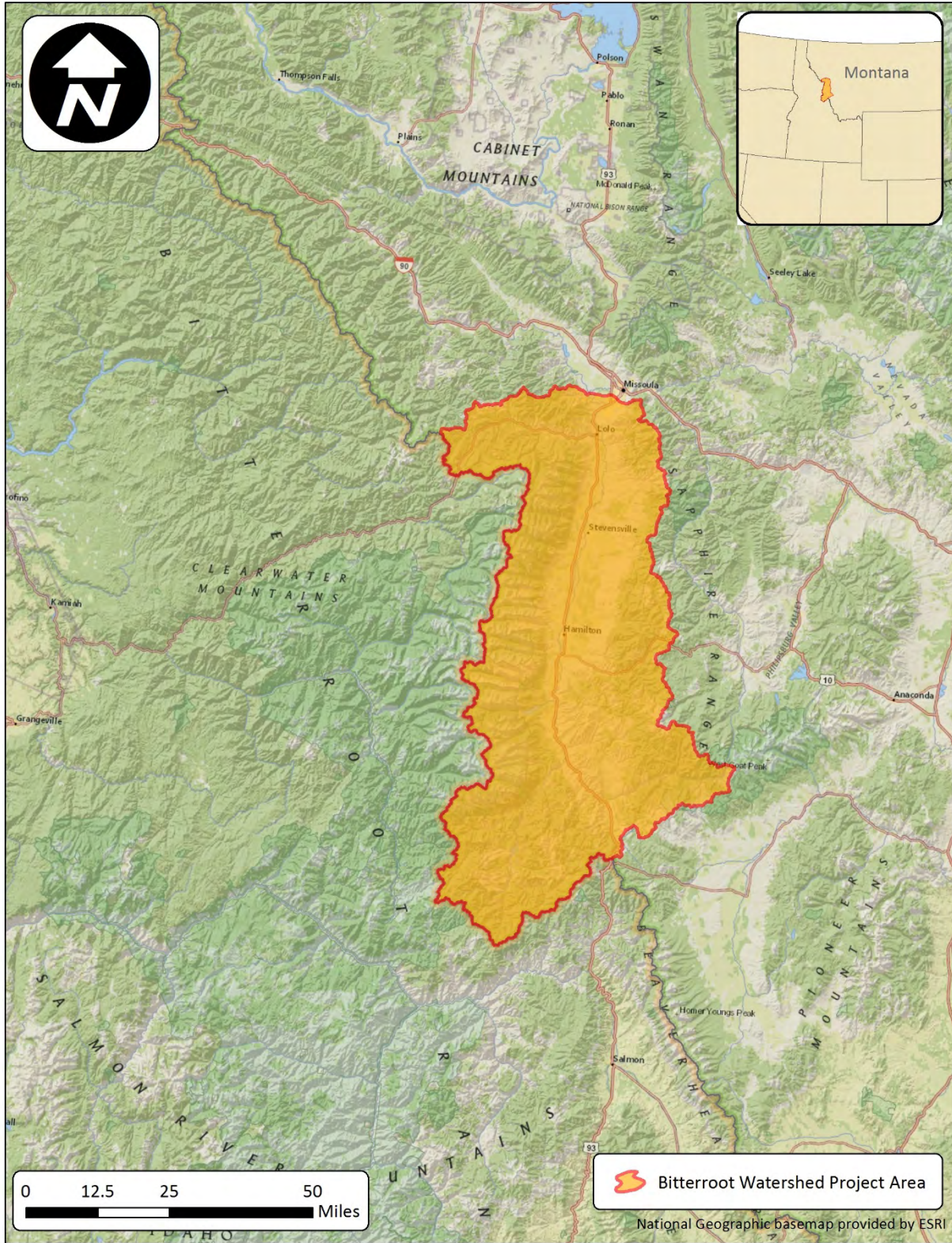


Figure A-1. Location of Bitterroot Watershed Project Area

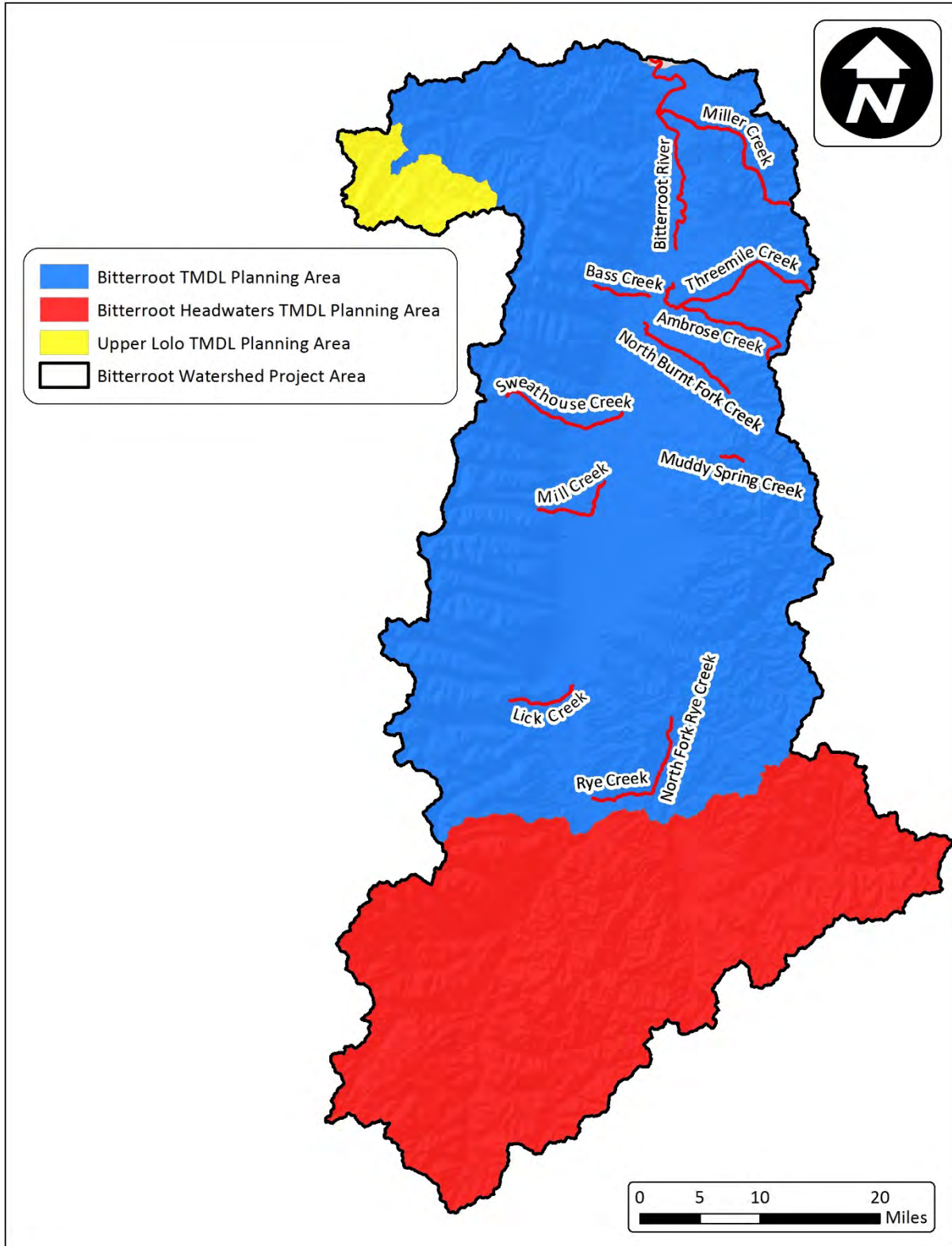


Figure A-2. TMDL Planning Areas (TPAs) within the Bitterroot Watershed Project Area

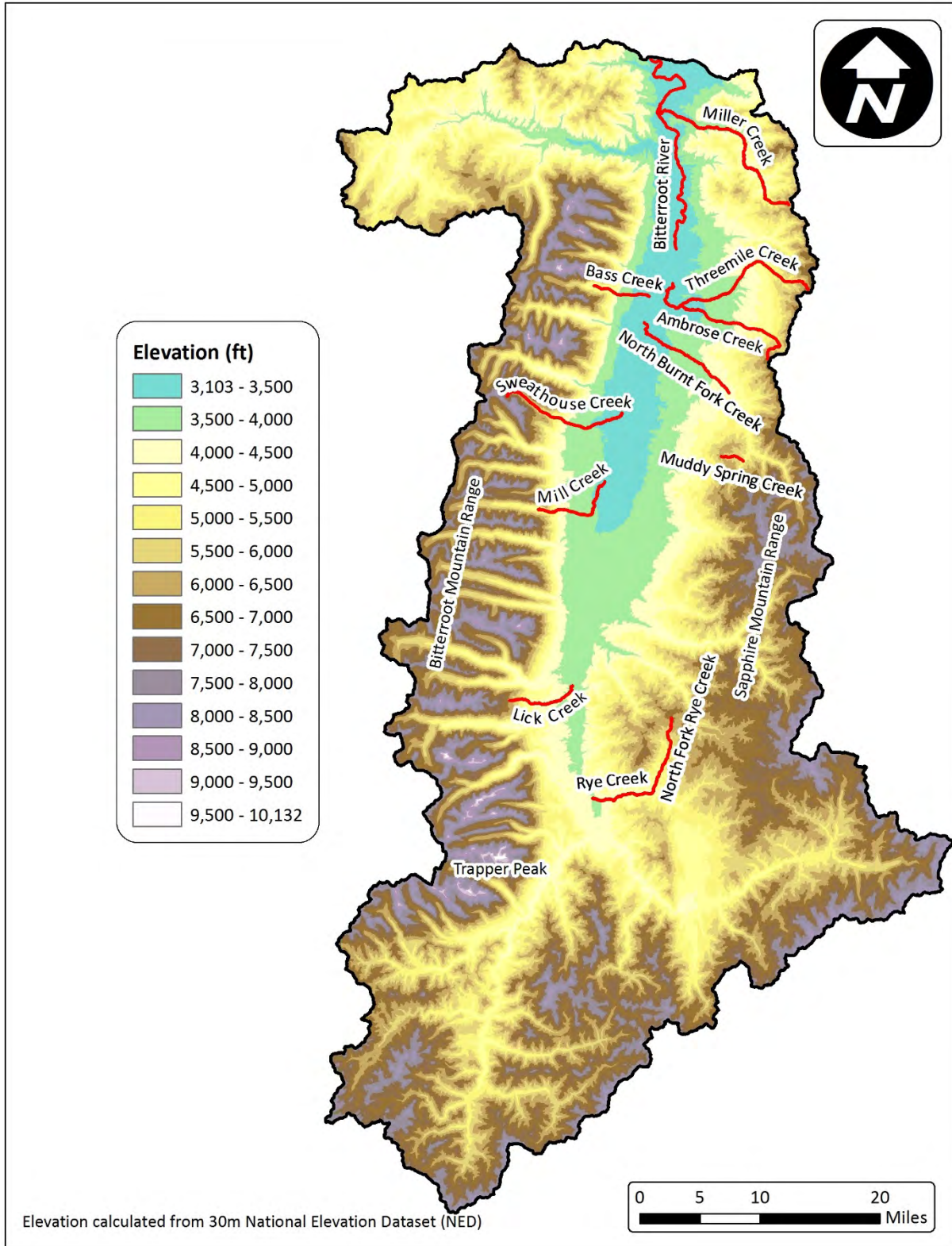


Figure A-3. Elevation of the Bitterroot Watershed Project Area

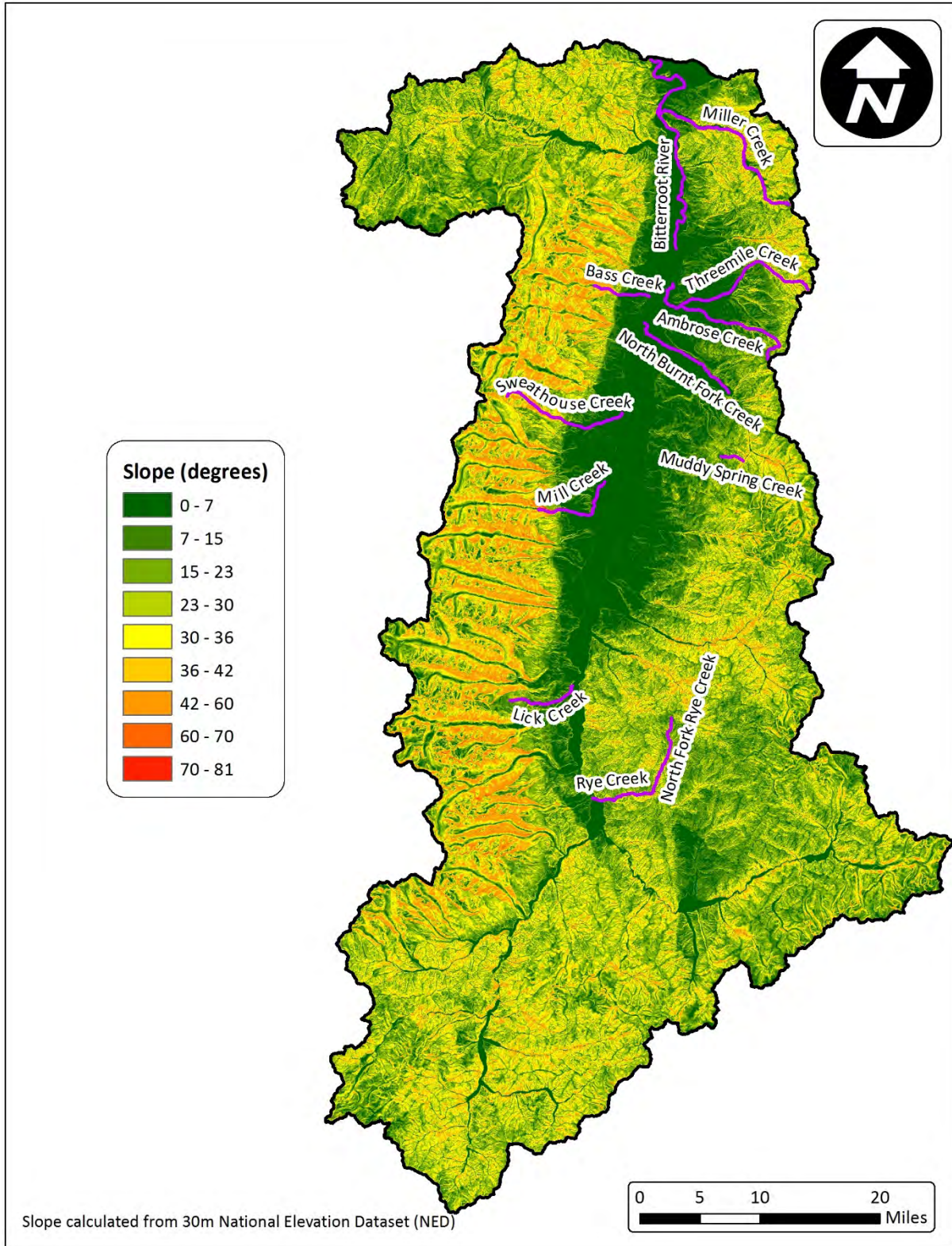


Figure A-4. Slope of the Bitterroot Watershed Project Area

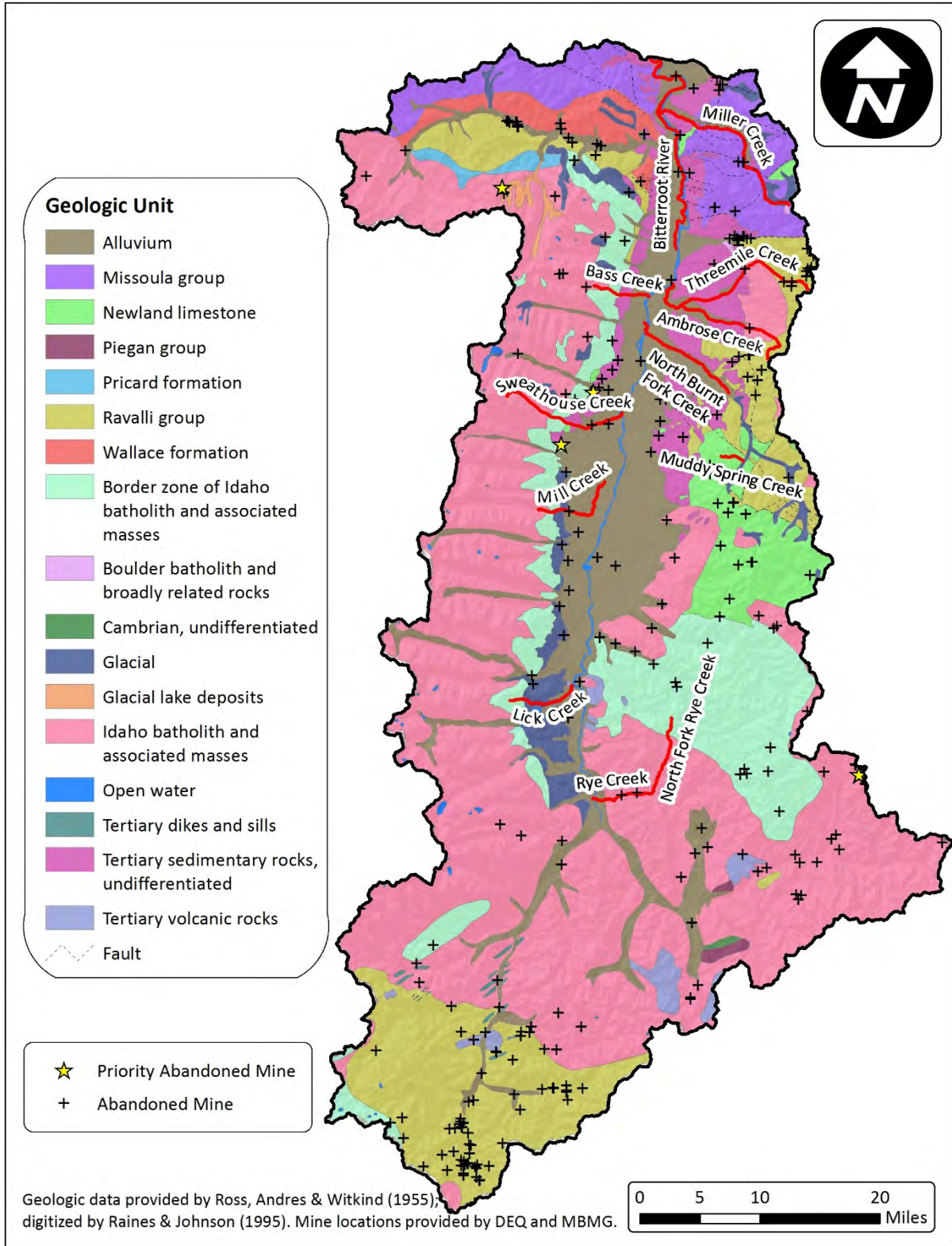


Figure A-5. Geologic units and abandoned mines of the Bitterroot Watershed Project Area

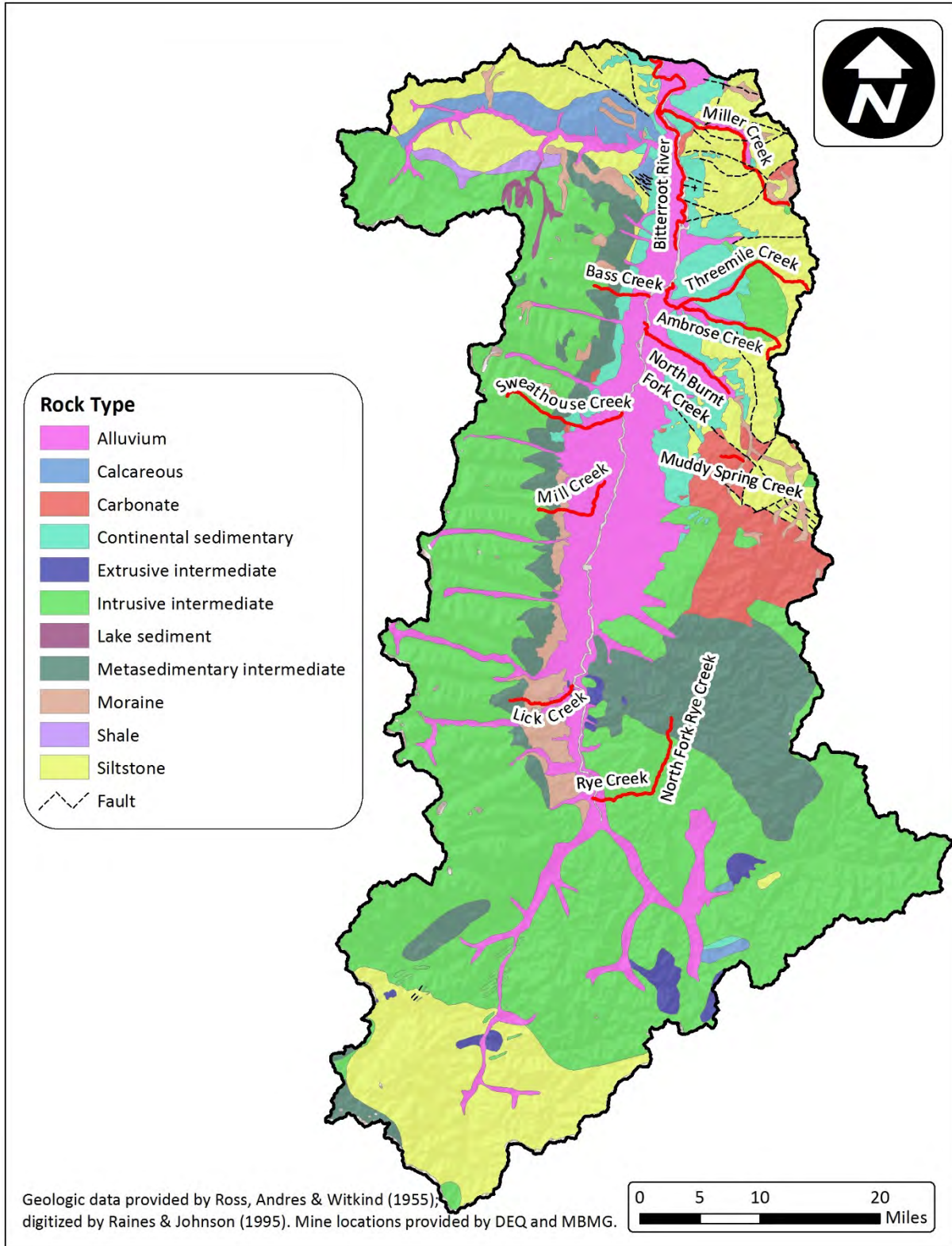


Figure A-6. Geologic rock types of the Bitterroot Watershed Project Area

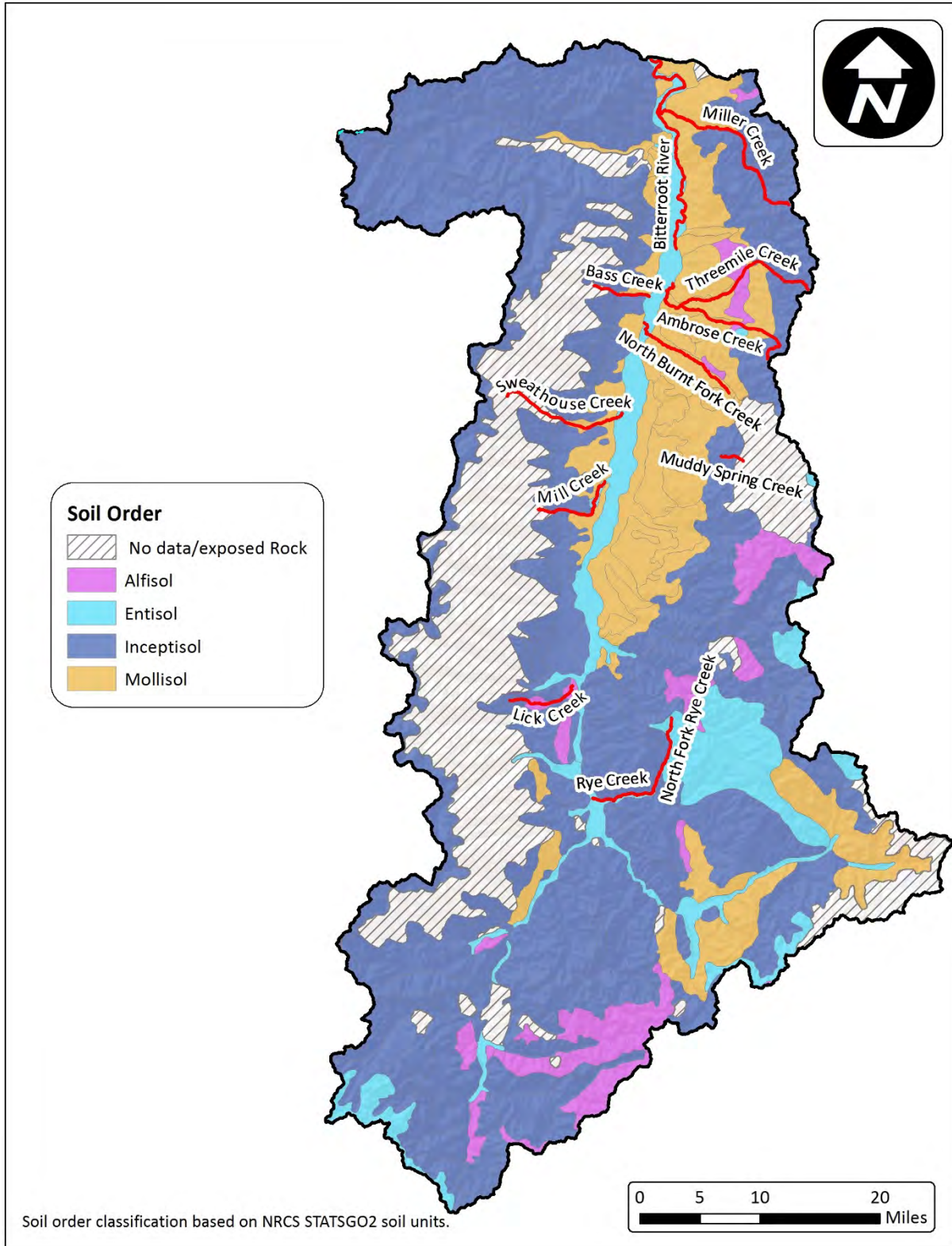


Figure A-7. Soil orders of the Bitterroot Watershed Project Area

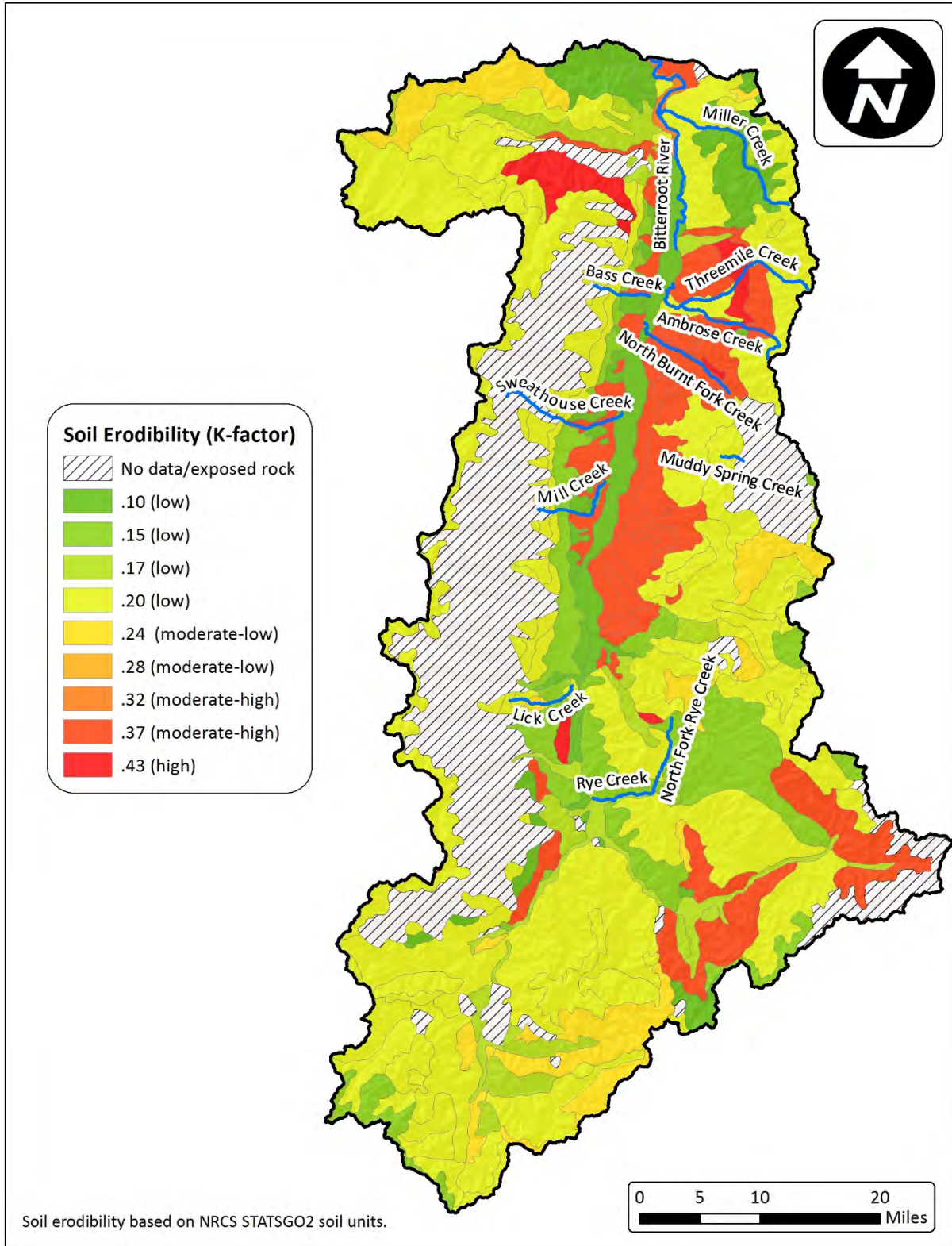


Figure A-8. Soil erodibility values of the Bitterroot Watershed Project Area

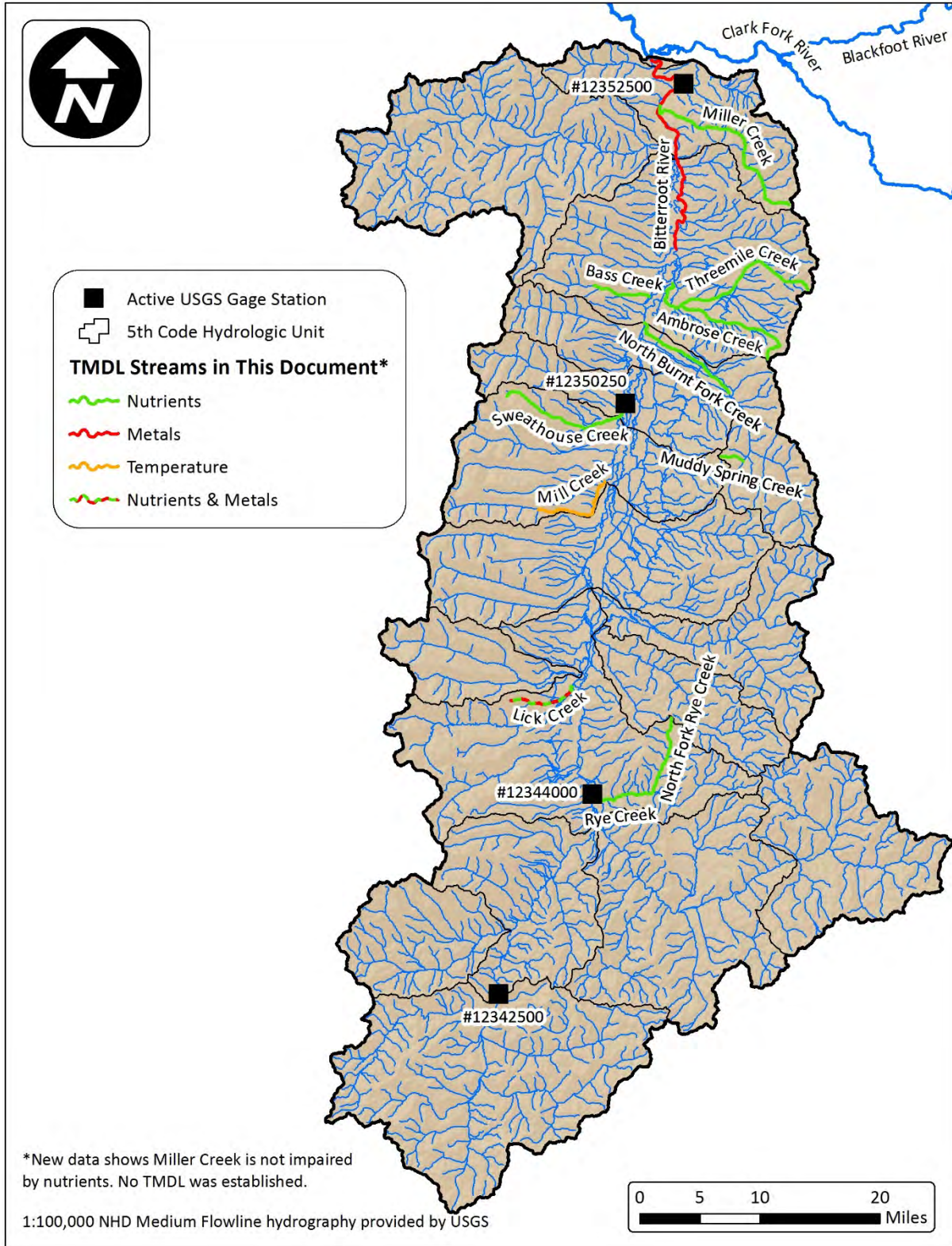


Figure A-9. Surface water hydrography of the Bitterroot Watershed Project Area

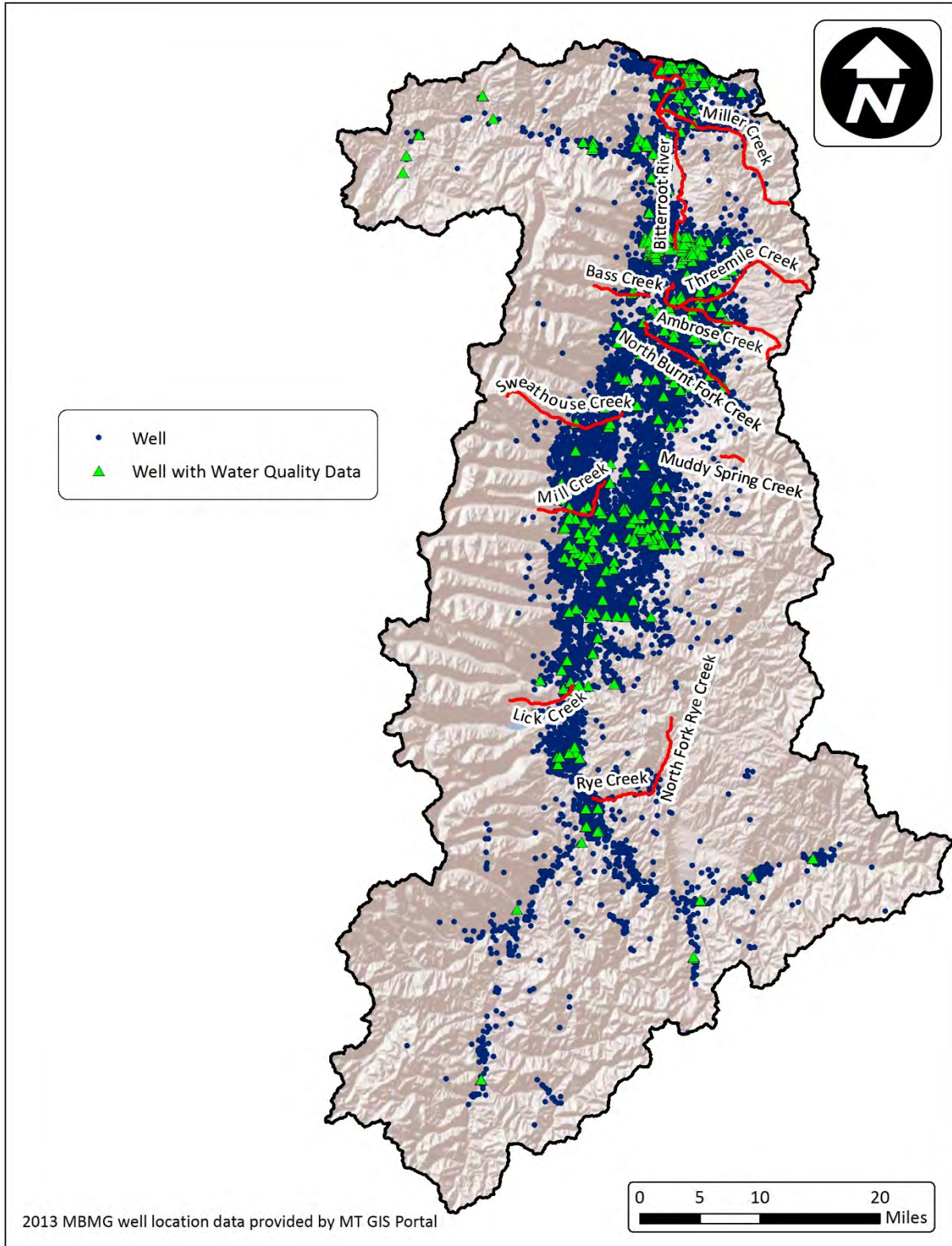


Figure A-10. Groundwater wells in the Bitterroot Watershed Project Area

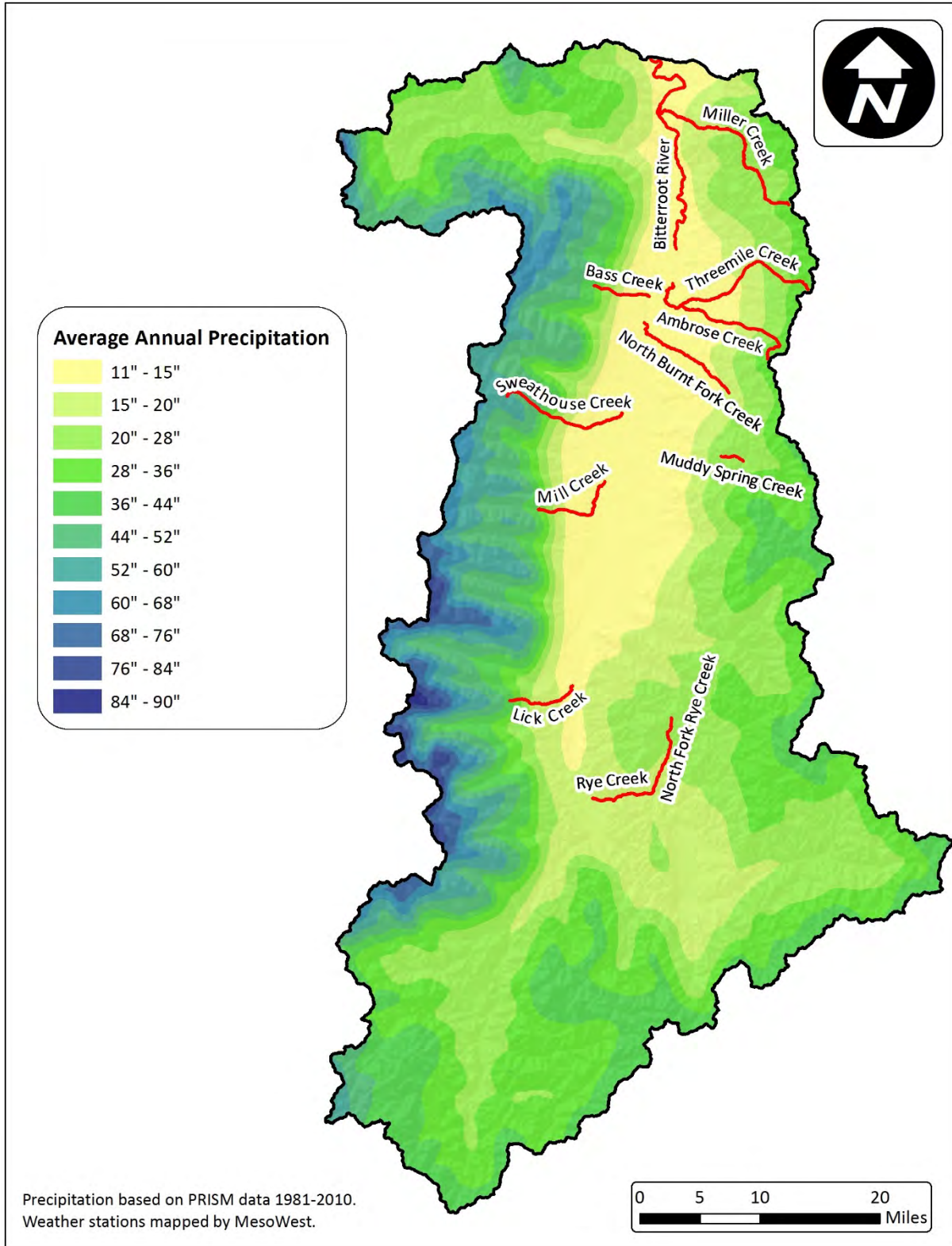


Figure A-11. Precipitation averages in the Bitterroot Watershed Project Area

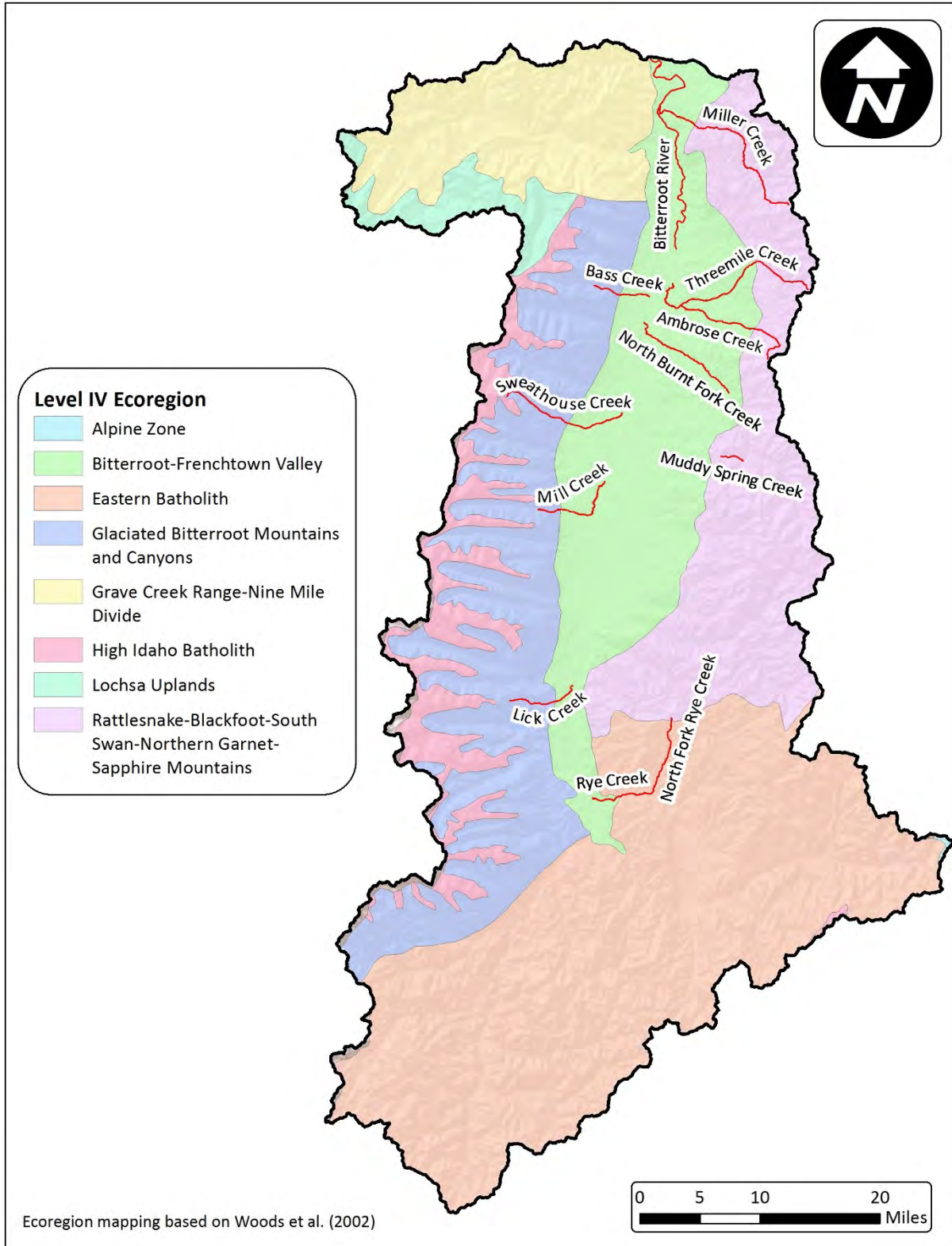


Figure A-12. Ecoregions of the Bitterroot Watershed Project Area

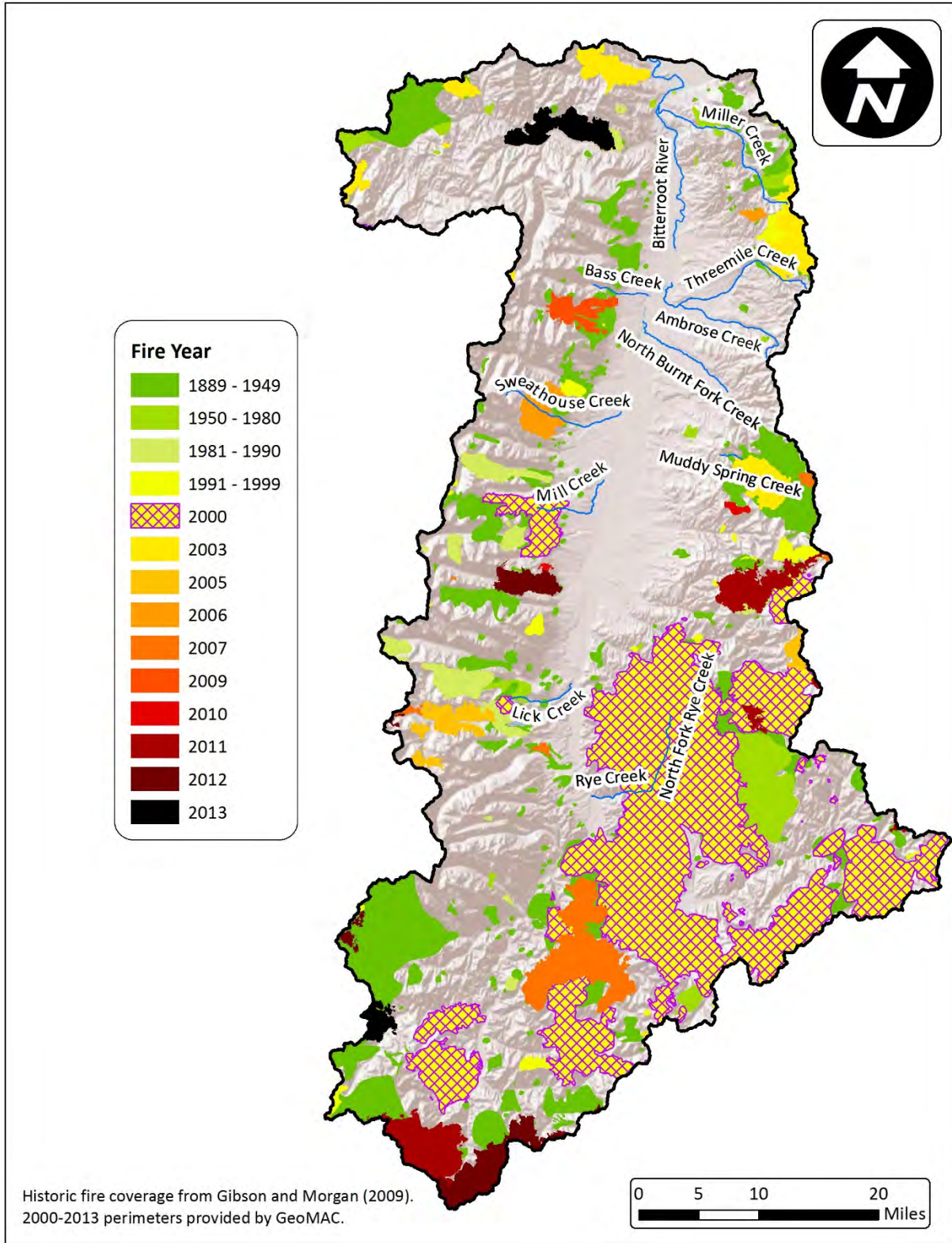


Figure A-13. Fire history of the Bitterroot Watershed Project Area

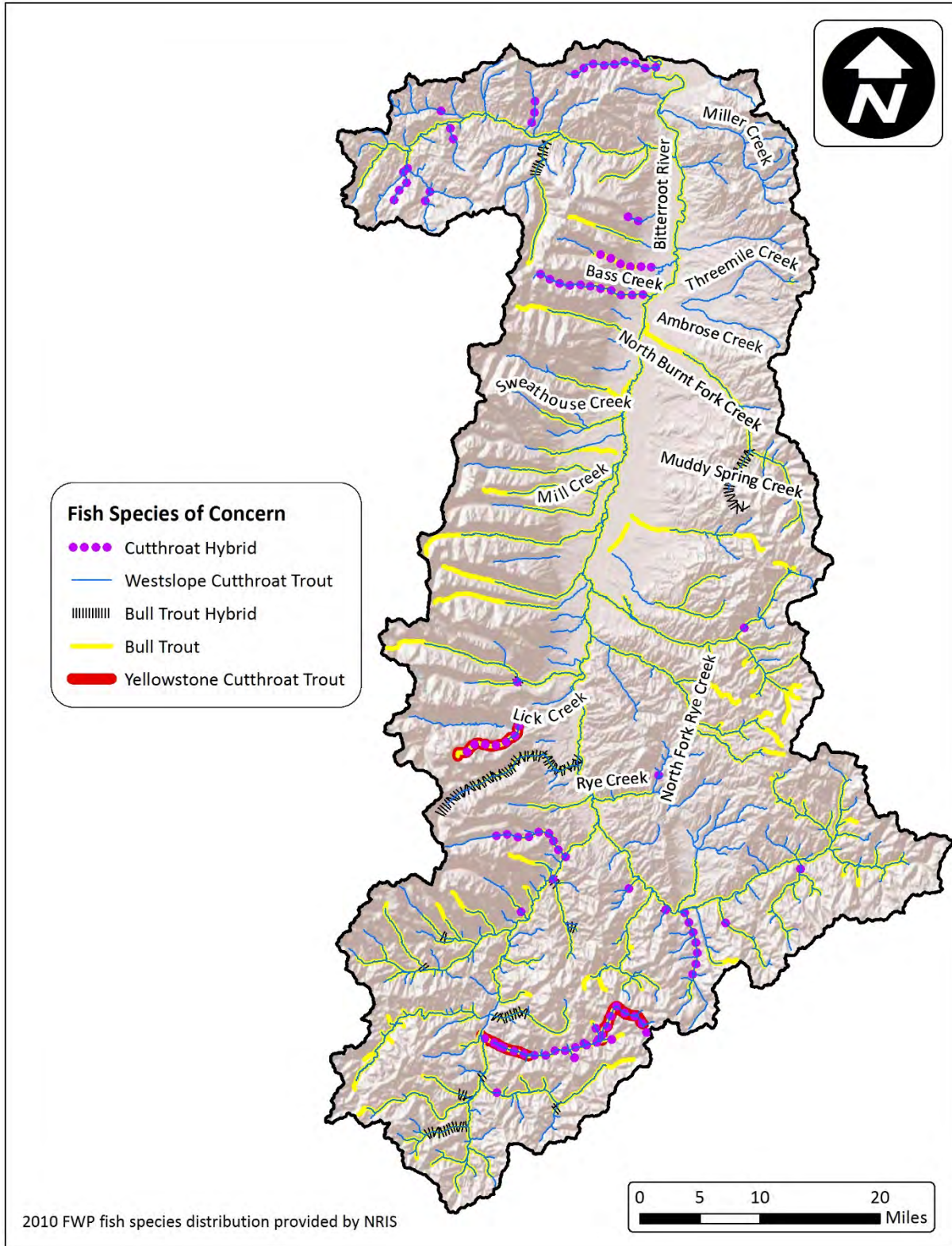


Figure A-14. Fish species of concern in the Bitterroot Watershed Project Area

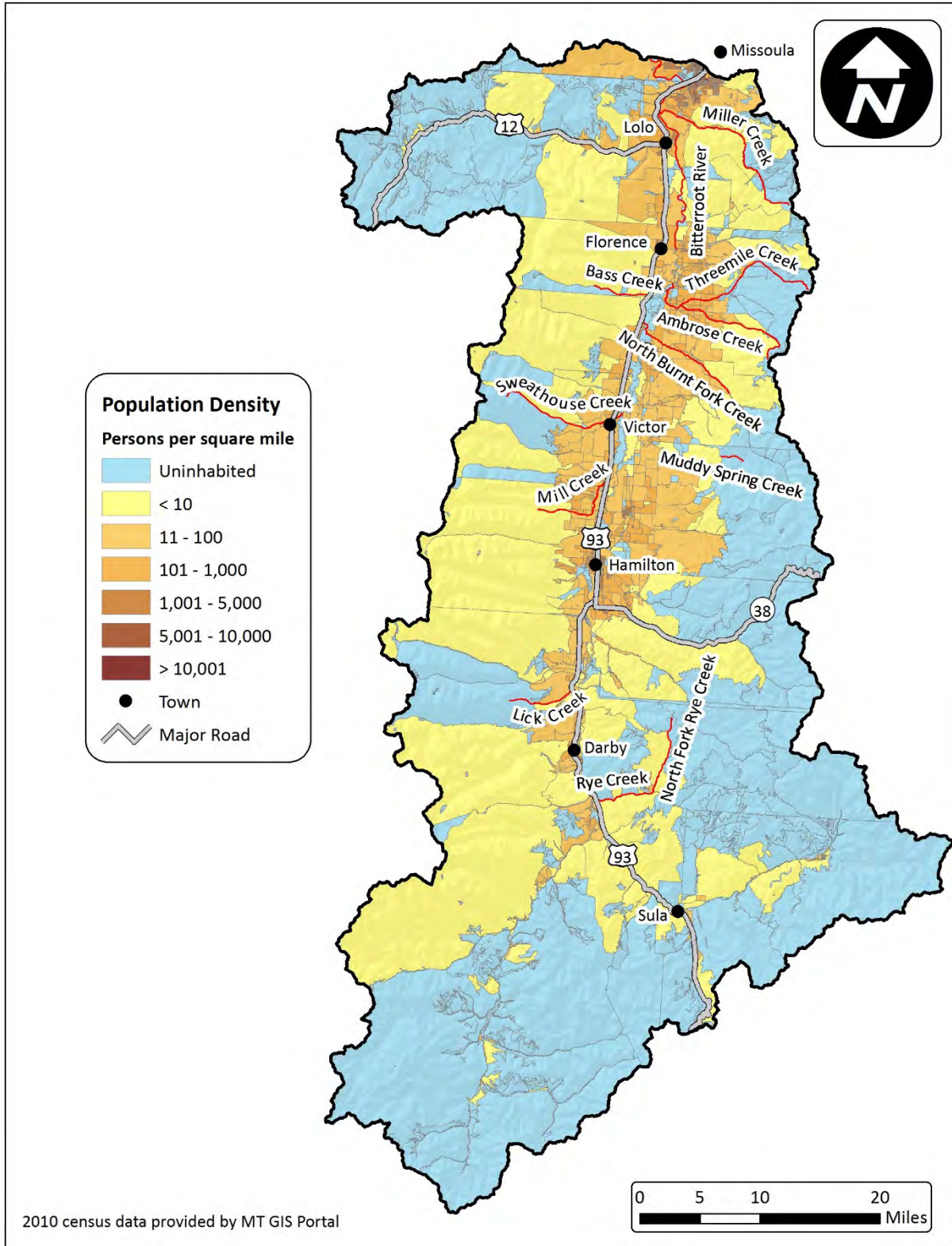


Figure A-15. Population density of the Bitterroot Watershed Project Area

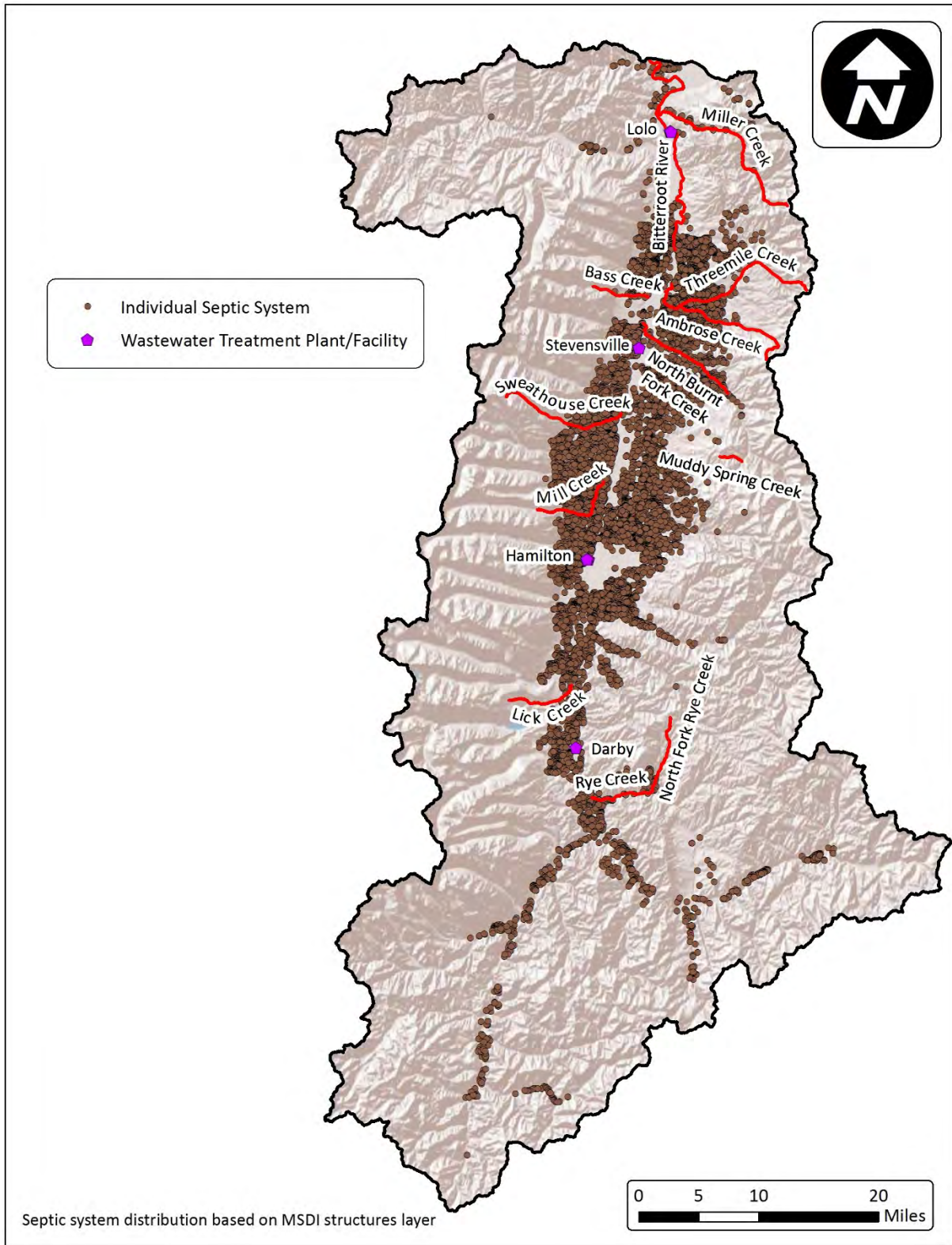


Figure A-16. Individual septic systems of the Bitterroot Watershed Project Area

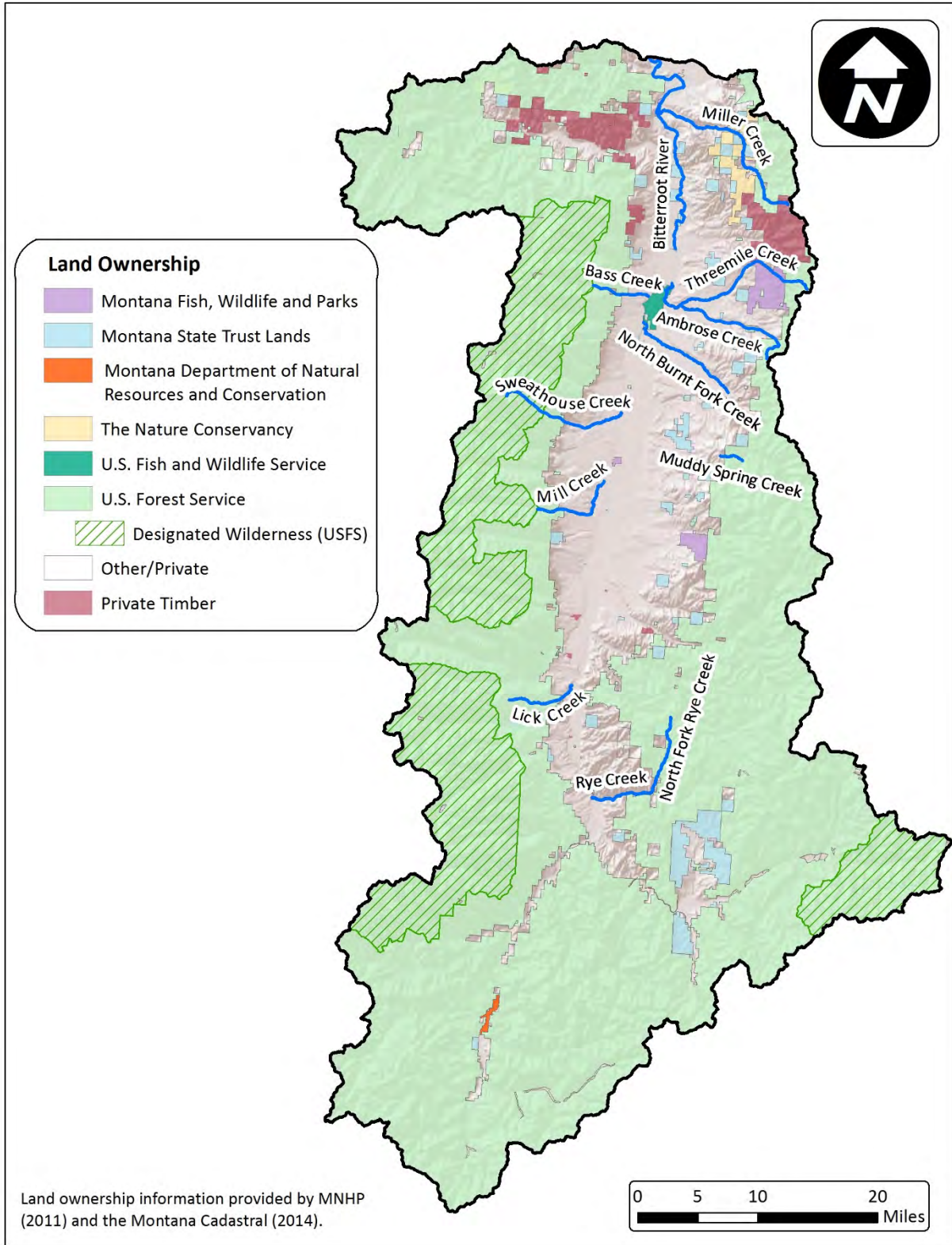


Figure A-17. Land ownership of the Bitterroot Watershed Project Area

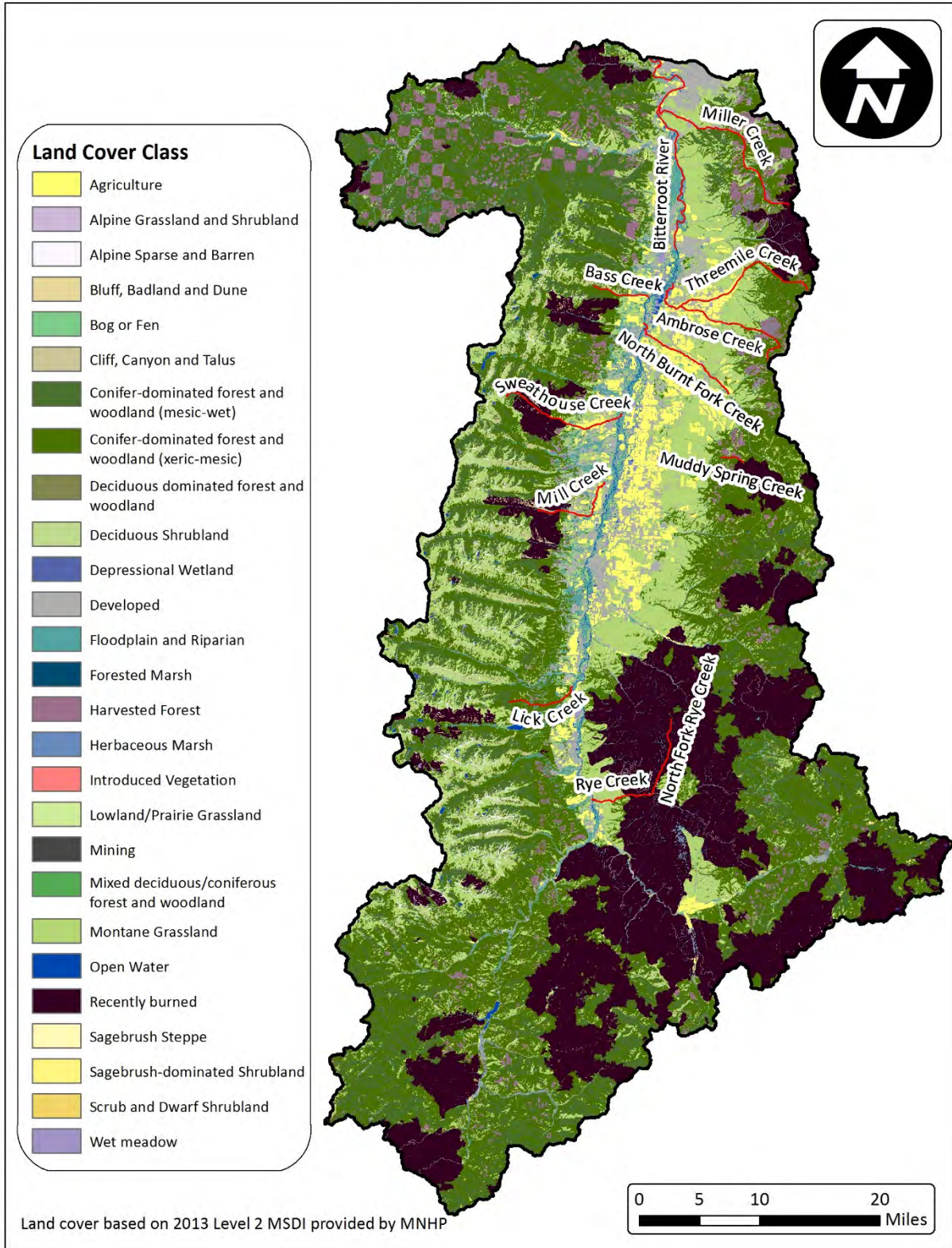


Figure A-18. Land cover of the Bitterroot Watershed Project Area

