



NOTICE OF PUBLICATION OF CATEGORICAL EXCLUSION
CITY OF TOWNSEND, MONTANA
SRF #: C301260
TOWNSEND WASTEWATER SYSTEM IMPROVEMENTS

January 5, 2018

The Montana Department of Environmental Quality has reviewed the above-named project. The project consists of rehabilitating approximately 4,580 lineal feet of vitrified clay pipe sewer mains with cured-in-place pipe (CIPP); replacement of the existing lift station with a new package submersible chopper pump lift station; installation of a new fine-bubble aeration system, control valve replacement, and other lagoon modifications; lagoon sludge removal and temporary placement in existing Cell 1 for drying; and installation of ultraviolet disinfection on the wastewater effluent. If contingency funds remain at the end of the project, the city may replace at least a portion of the force main to the lagoon, concentrating on sections under the railroad tracks and the highway. Sludge will dry naturally in Cell 1 for a period up to 2 years, after which time it will be hauled off-site and land-applied as a separate project. These improvements are designed to improve effluent quality and replace components that have reached the end of their useful lives. Petroleum-contaminated soils and groundwater might be encountered during excavation activities. They will be handled and disposed of according to DEQ-approved specifications and protocol.

Pursuant to ARM 17.40.318, the Department has concluded that the proposed project meets the Categorical Exclusion criteria of the National Environmental Policy Act (NEPA) and the Montana Environmental Policy Act (MEPA). The Categorical Exclusion may be revoked if the project is not initiated within the time period specified in the Preliminary Engineering Report, a new or modified application is submitted, new evidence demonstrates serious local or environmental issues exist, or state, local, tribal, or federal laws are violated.

The documentation for the Categorical Exclusion is available for public review at the following locations:

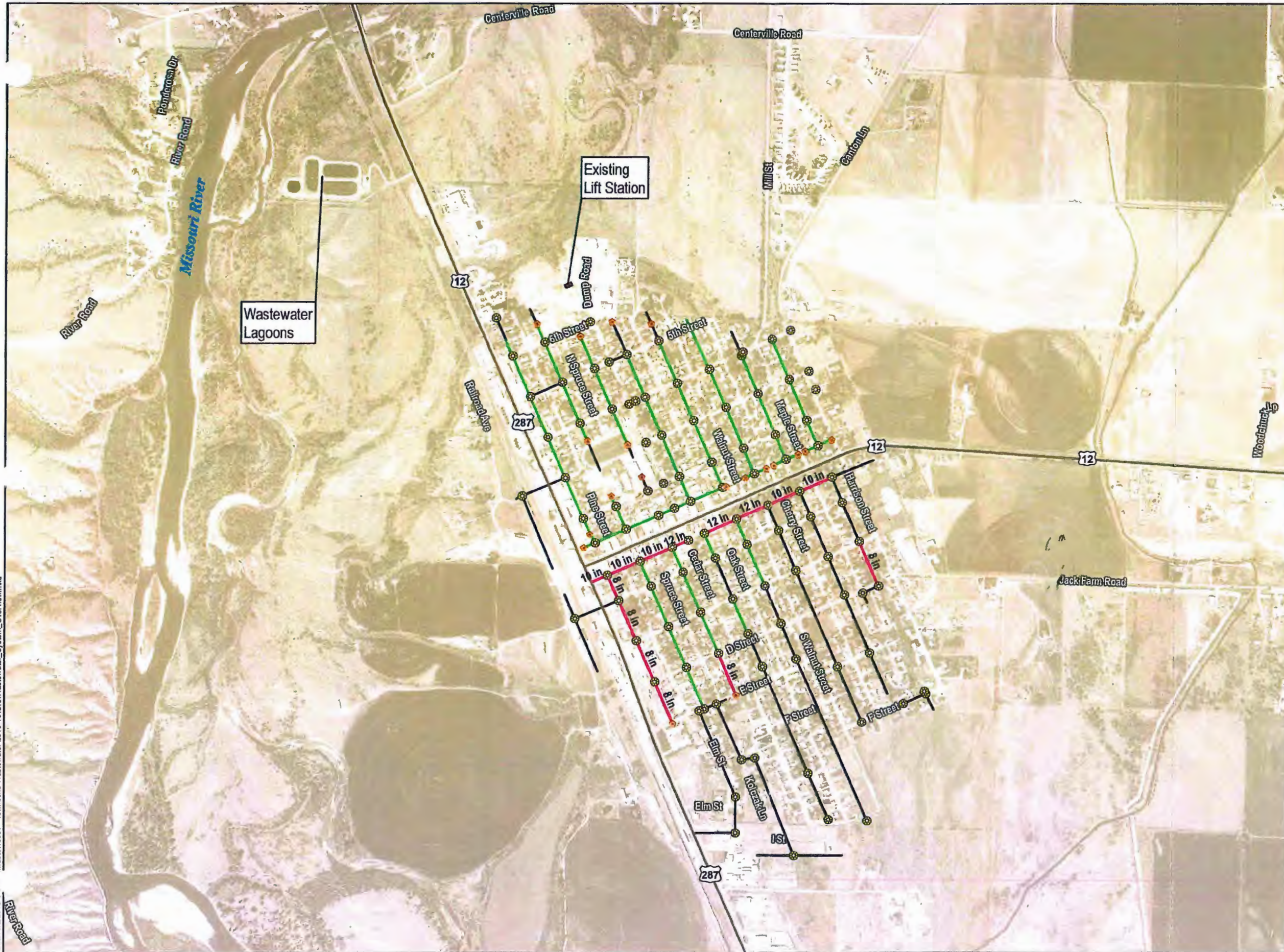
Department of Environmental Quality
State Revolving Fund Loan Program
1520 East Sixth Avenue
Helena, MT 59601

City of Townsend
110 Broadway
Townsend, MT 59644

Sincerely,

Paul LaVigne, Section Supervisor
Water Pollution Control State Revolving Fund Program
Engineering Bureau, Water Quality Division
Montana Department of Environmental Quality

**Townsend Wastewater System
Preliminary Engineering Report – 2016**



Legend

- ◆ Lamphole
- Manhole
- Sewer
 - Sewer Main - To Be Lined 2016
 - Sewer Main - Lined 2010
 - Sewer Main



**Figure 2.C.1
Wastewater System**

Date: 5/2/2016 P:\wast\15907 - Townsend Wastewater 2015-16\GIS\Wastewater_System_Overview.mxd