



NOTICE OF PUBLICATION OF CATEGORICAL EXCLUSION
TOWN OF CIRCLE, MONTANA

WATER SYSTEM IMPROVEMENTS

March 30, 2017

The Montana Department of Environmental Quality has reviewed the above-named project. This environmental review amends the review issued on September 26th, 2016 by adding an additional block of water main replacement in 11th Avenue. The current project now consists of water main replacement in one block of Horse Creek Road (10th Street), two blocks in Avenue G and one block in 11th Street in the Town of Circle, Montana. Upgrades include new 8" diameter PVC pipe with new valves and fire hydrants.

Based on the internal review of the project, an old underground fuel storage tank was identified at the former McCone County Hospital. Petroleum impacts did not migrate off-site toward the northwest based on data from a monitoring well located near the northwest corner of the former hospital. The release is greater than 200 ft. up/cross gradient of the water main project and likely does not constitute a threat to the project. The project specifications will note the potential to encounter petroleum contaminated soil within the project site and include language on the procedures to follow if this were to occur.

Pursuant to ARM 17.40.318, the Department has concluded that the proposed project meets the Categorical Exclusion criteria of the National Environmental Policy Act (NEPA) and the Montana Environmental Policy Act (MEPA).

The documentation for the Categorical Exclusion is available for public review at the following locations:

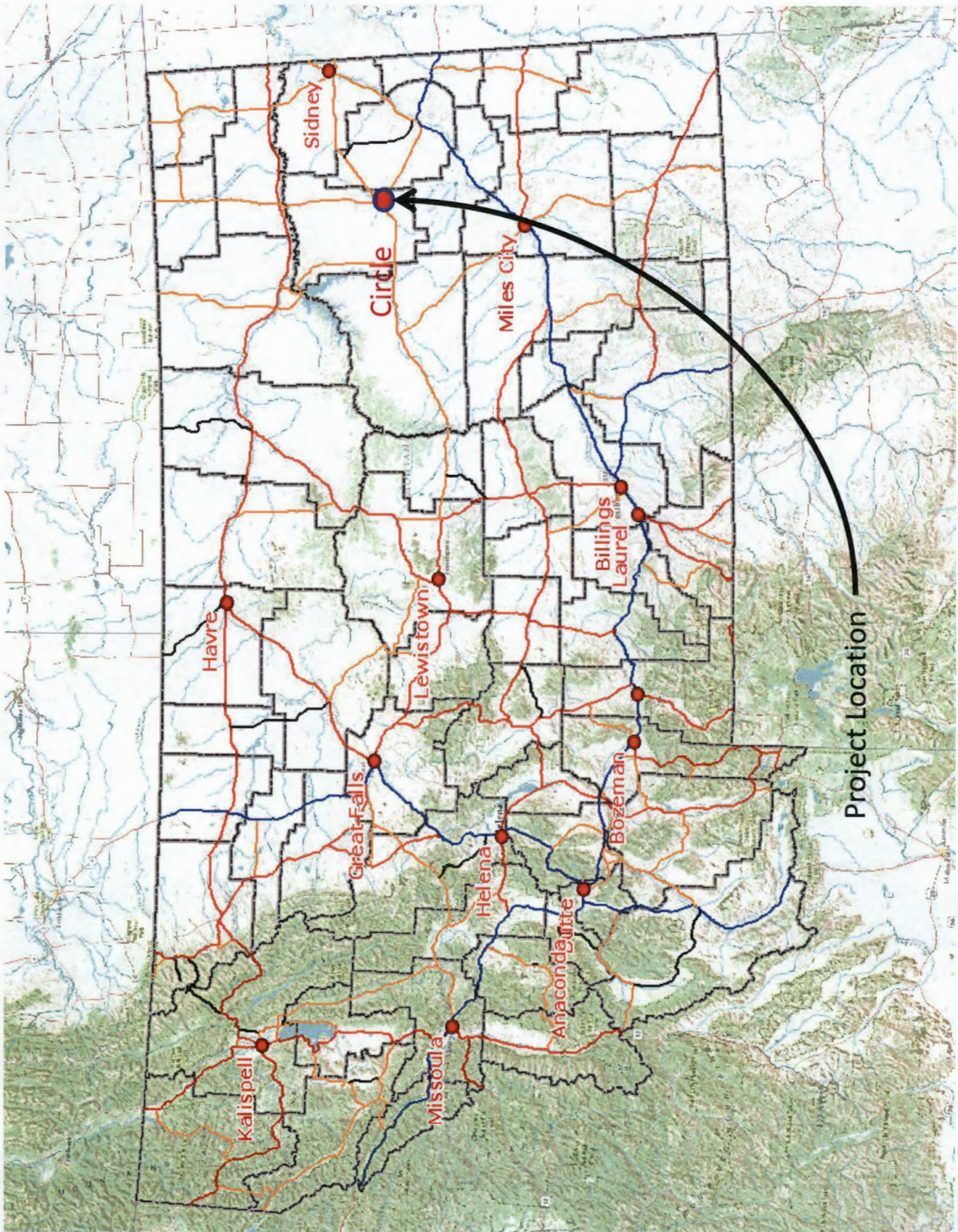
Department of Environmental Quality
State Revolving Fund Loan Program
1520 East Sixth Avenue
Helena, MT 59620-0901

Town of Circle
105 East Main St.
Circle, MT 59215

Sincerely,

A handwritten signature in blue ink that reads "Todd Teegarden". The signature is written in a cursive style with a large, sweeping initial "T".

Todd Teegarden, Bureau Chief
Engineering Bureau
Water Quality Division
Montana Department of Environmental Quality



Sidney

Circle

Miles City

Billings
Laurel

Havre

Lewis and Clark

Great Falls

Helena

Bozeman

Kalispell

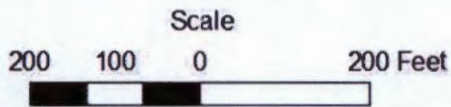
Missoula

Anaconda

Project Location

Figure 2. Annotated by Jay Shearer

Figure 2. Eleventh Street Addition For Circle Water Main Project Potential Contaminant Source Review



Legend

- 2016 Water Main Replacement Project Area
- 2017 Additional Water Main Segment Replacement
- 50-foot Water Main Project Area Buffer

Groundwater flow is northward beneath the former McCone Co. Hospital (Release 2133)

Mapping by C. DeMartino, DEQ Water Quality Division, January 2017