



NOTICE OF PUBLICATION OF CATEGORICAL EXCLUSION  
DRY-REDWATER REGIONAL WATER AUTHORITY

SIDNEY CIRCLE WATER SYSTEM IMPROVEMENTS

February 26, 2018

The Montana Department of Environmental Quality has reviewed the above-named project. The project consists of the construction of a booster station and the installation of 2,541 lineal feet of 18-inch, 567 lineal feet of 12-inch, and 13,902 lineal feet of 6-inch diameter water main, along with valves, flushing hydrants, and water services to 55 homes in the Sidney Circle I and II, Goss Homesites, Schilling Homesites, and Green Acres subdivisions. All construction will take place within highway or street right-of-way or on adjacent property, with the appropriate agreement, lease, permit, or easement from the owning entity. Drinking water will be provided by connection to the Sidney municipal water system.

Pursuant to ARM 17.40.318, the Department of Environmental Quality has concluded that the proposed project meets the Categorical Exclusion criteria of the National Environmental Policy Act (NEPA) and the Montana Environmental Policy Act (MEPA).

The documentation for the categorical exclusion, including a map of the proposed improvements, is available for public review at the following locations:

Department of Environmental Quality  
State Revolving Fund Loan Program  
1520 East Sixth Avenue  
Helena, MT 59601  
e-mail: [gwiens@mt.gov](mailto:gwiens@mt.gov)

Dry-Redwater Regional Water Authority  
106 10<sup>th</sup> Street  
Circle, MT 59215  
e-mail: [DRWA@midrivers.com](mailto:DRWA@midrivers.com)

Sincerely,

A handwritten signature in blue ink, appearing to read "Mark A. Smith", is written over a horizontal line.

Mark A. Smith, Acting Bureau Chief  
Engineering Bureau  
Water Quality Division  
Montana Department of Environmental Quality

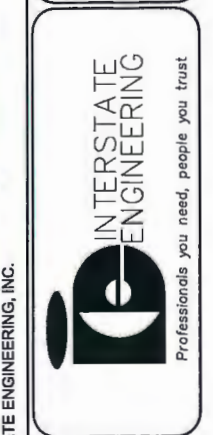


NOT TO SCALE

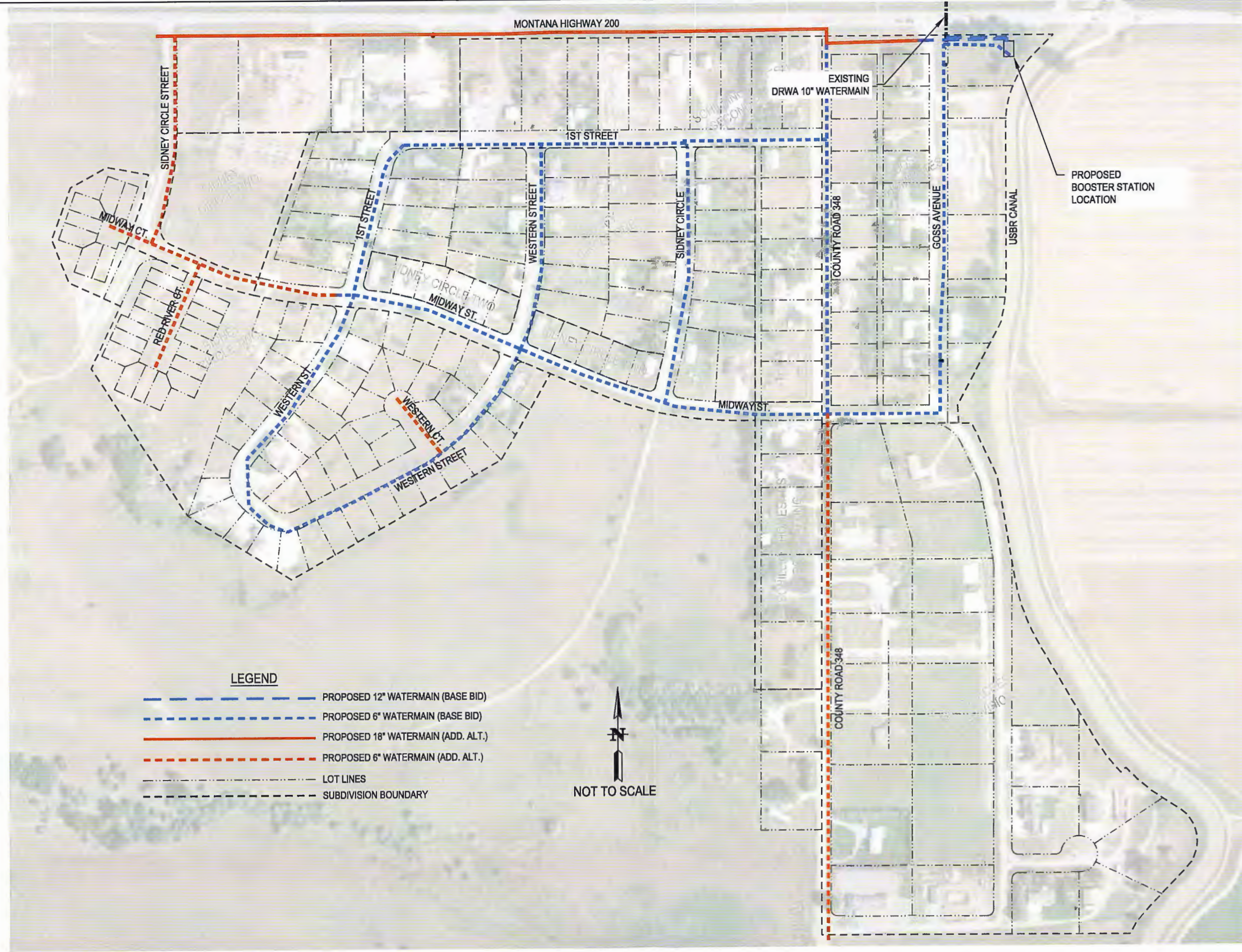
Revision No.	Date	By	Description

DRY-REDWATER REGIONAL WATER AUTHORITY  
 SIDNEY CIRCLE WATER SYSTEM IMPROVEMENTS  
 RICHLAND COUNTY, MONTANA  
 OVERVIEW SHEET  
 Drawn By: J.D.M. Project No.: S15-00-114.02/03  
 Checked By: J.L.M. Date: JAN. 19, 2018

Interstate Engineering, Inc.  
 P.O. Box 648  
 425 East Main Street  
 Sidney, Montana 59270  
 Ph (406) 433-5617  
 Fax (406) 433-5618  
 www.interstateeng.com  
Drawn offsite in Minnesota, North Dakota and South Dakota



© 2018, INTERSTATE ENGINEERING, INC.  
 1/2 SHEET NO.



**LEGEND**

- PROPOSED 12" WATERMAIN (BASE BID)
- PROPOSED 6" WATERMAIN (BASE BID)
- PROPOSED 18" WATERMAIN (ADD. ALT.)
- PROPOSED 6" WATERMAIN (ADD. ALT.)
- LOT LINES
- SUBDIVISION BOUNDARY



Revision No.	Date	By	Description

S:\DRY-REDWATER\PROJECTS\DRWA\DRWA\_002 - New Water Main\Map\Map\_Sidney\DRWA\_002.dwg  
User: J.L.M. Date: 1/19/2018 2:38 PM