

**Clark Fork River
Operable Unit of the
Milltown Reservoir Clark
Fork River
Superfund Site**

For more information:

Brian Bartkowiak, DEQ
Clark Fork River
Project Officer
bbartkowiak@mt.gov
(406) 841-5043

Katie Garcin, DEQ
CFR Project Technician
kgarcin@mt.gov
(406) 846-5042

Jeni Garcin, DEQ
Public Information Officer
jgarcin2@mt.gov
(406) 841-5016

Tom Mostad, NRDP
Restoration Manager
tmostad2@mt.gov
(406) 444-0227

Darryl Barton, CFRTAC
darrylbbarton@yahoo.com
(406) 846-1628

Websites:

www.deq.mt.gov
www.doj.mt.gov
www.cfrtac.org



Mobile Device QR Barcode to CFR
Website

NEW **NEW**

**Please sign up for email
updates...Join our
List Service!**

[http://svc.mt.gov/deq/ListServe/
clarkforkRiverStep1.asp](http://svc.mt.gov/deq/ListServe/clarkforkRiverStep1.asp)

NEW **NEW**

Montana DEQ Remediation Division
P.O. Box 200901
Helena, MT 59620-0901



River Review

May 2013

Phase I Construction Has Begun!

The remediation and restoration of the Upper Clark Fork River has begun! DEQ advertised and awarded a contract to Helena Sand and Gravel (HS&G) for the Reach A, Phase I construction project in early 2013. HS&G is a Montana company with extensive experience working on projects of this size and complexity. Work began on March 4, 2013. Initial site work consisted of developing internal haul roads and developing an on-site clean material source.

Hauling of tailings began on April 4th, and to date, over 25,100 cubic yards of mine waste has been removed from the floodplain of the river and placed in the BP Waste Management Area. Crews have already completed work on several sections of the river, including dewatering activities in order to remove contamination, internal haul road construction, and approximately 3,200 linear feet of stream-bank stabilization. With the weather warming up, the chance for high flows increases every day. Workers are preparing the site for the eventual increase in water levels to prevent additional sediment from entering the river.

Haul trucks will continue to move tailings from on-site to the BP Waste Management Area. Certain streambank treatments will continue during high water but are dependent on river conditions.

DEQ appreciates the public's patience during construction and with the increase in haul traffic and the upgrades to Morel Road. Public safety is the number one concern on this project.



Tailings removal and streambank
stabilization— April 2013



Stabilized streambank - April 2013

Stakeholder Meeting

DEQ will hold the first stakeholders meeting on June 19. The meeting will consist of a site tour of Phase I and will start at 1:00 pm. This meeting is an opportunity for the various agency officials and other stakeholders to get an on-site update and tour of the current construction work. Please meet at the Eagle Entrance to the Warm Spring Ponds wildlife management area, located off Morel Road. If you plan on attending or need more information, please RSVP to Katie Garcin at KGarcin@mt.gov or 841-5042. Meetings will continue on the 3rd Wednesday of every month during construction.

Landowner and Public Meeting

DEQ will hold the first landowner and public tour of the Phase I construction site on Saturday, June 22, at 11:00 am. We encourage any interested members of the public and landowners along the river to attend this tour session. Please meet at the Eagle Entrance to the Warm Spring Ponds wildlife management area, located off Morel Road. If you plan on attending or need more information, please RSVP to Katie Garcin at KGarcin@mt.gov or 841-5042. Meetings will continue the 3rd Saturday of every month during construction.

Remediation Developments—Continued

River Closure Notice

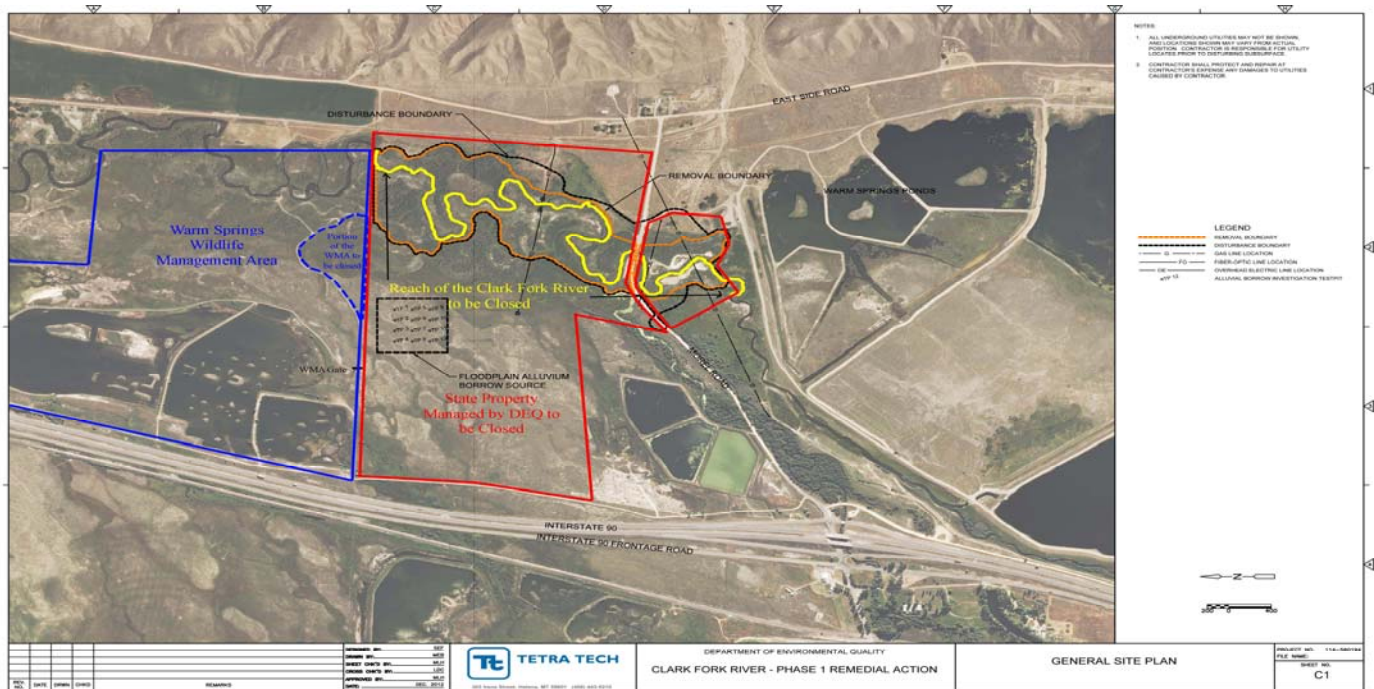
An emergency closure of 1 ¾ miles of the Clark Fork River, ten acres of the Warm Springs Wildlife Management Area (WMA) and a portion of the road within the WMA has been issued due to Superfund construction cleanup activities. The closure will allow construction crews to safely perform the cleanup without risk of potential incidents with recreationists in the river or on the streambanks or adjacent lands. The emergency closure is in effect for 120 days. A formal process asking FWP to extend the closure beyond the 120 days has been initiated as the project will take approximately one year to complete. The remaining portions of the WMA will remain open for bird watching, fishing, and other activities. Closure signs have been posted notifying the public of the prohibited areas.

For more information contact:

Brian Bartkowiak, Upper Clark Fork River DEQ Project Officer
 (406) 841-5043, (406) 461-3070 (cell), or
bbartkowiak@mt.gov.

Attention Contractors

To be considered for a future bid, a contractor must meet several criteria, including but not limited to, being bonded and insured; a registered contractor with the State of Montana; and trained (40 hours) in emergency hazardous waste operation (HAZWOPER). The DEQ will develop designs for various stages of the work. When a design is complete, the construction project will be put out for bid on the DEQ website at www.deq.mt.gov. Typically, the bid is open for 30 to 60 days. The DEQ will respond to questions and hold a pre-bid conference. The sealed bids are opened in public. The DEQ selects the lowest responsive and responsible bid.



Check out the CFR webpage on the DEQ website for updates and information throughout construction!

The Clark Fork River Operable Unit (CFR OU) is part of the Milltown Reservoir/Clark Fork River Superfund Site. The CFR OU includes the Clark Fork River from its headwaters near Warm Springs Creek to Milltown Reservoir just east of Missoula. The heavy metals (Cadmium, Copper, Zinc, and Lead) and arsenic in the Clark Fork River are from historic mining, milling, and smelting processes linked to the Anaconda Company operations in Butte and Anaconda.

The majority of the cleanup will occur along a 43 mile stretch of the river from Warm Springs in Anaconda/Deer Lodge County downstream to Garrison in Powell County. This is known as "Reach A." The primary sources of contamination are tailings mixed with soil in the stream banks and historic floodplain. These sources threaten human health and animal and plant life.