

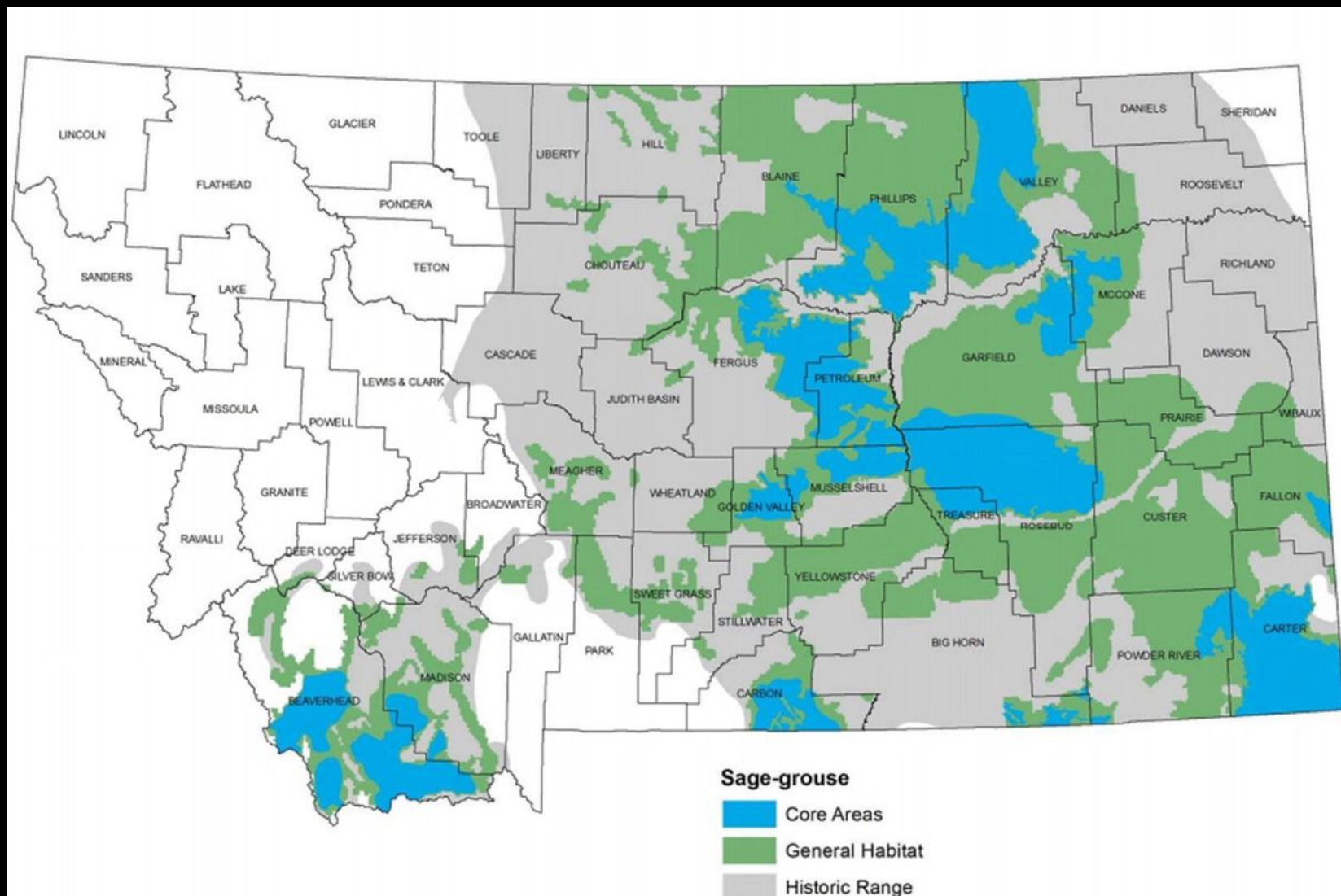
# **MONTANA SAGE GROUSE**

## Habitat Conservation Program



The Montana Department of  
**Natural Resources  
& Conservation**

# HISTORIC SAGE GROUSE DISTRIBUTION



# CONSERVATION CONCERNS


---

Habitat Loss, Fragmentation, Invasive Species



**Lack of Regulatory Mechanisms to Address Threats**





# **MONTANA'S CONSERVATION STRATEGY AND REGULATORY MECHANISMS**

---



- 1. Executive Order 12-2015**
- 2. Sage Grouse Stewardship Act, 2015**
- 3. Private Land Stewardship**

# MONTANA'S CONSERVATION STRATEGY GOAL:

- ✓ **Maintain viable sage grouse populations and conserve habitat; and**
- ✓ **Maintain flexibility to manage our own lands, our wildlife, and our economy.**

**(fulfill commitments so ESA listing never warranted)**



Photos: Joel Maes

Executive Order  
12-2015

Mitigation  
Market  
Place

**GOALS:**

**Maintain viable sage  
grouse populations and  
conserve habitat**

**Maintain flexibility to  
manage our own lands,  
our wildlife, and our  
economy**

Sage Grouse  
Stewardship  
Act:  
Grant Fund  
Mitigation

Private Land  
Stewardship



# MONTANA'S CONSERVATION STRATEGY

## 1. Executive Order 12-2015

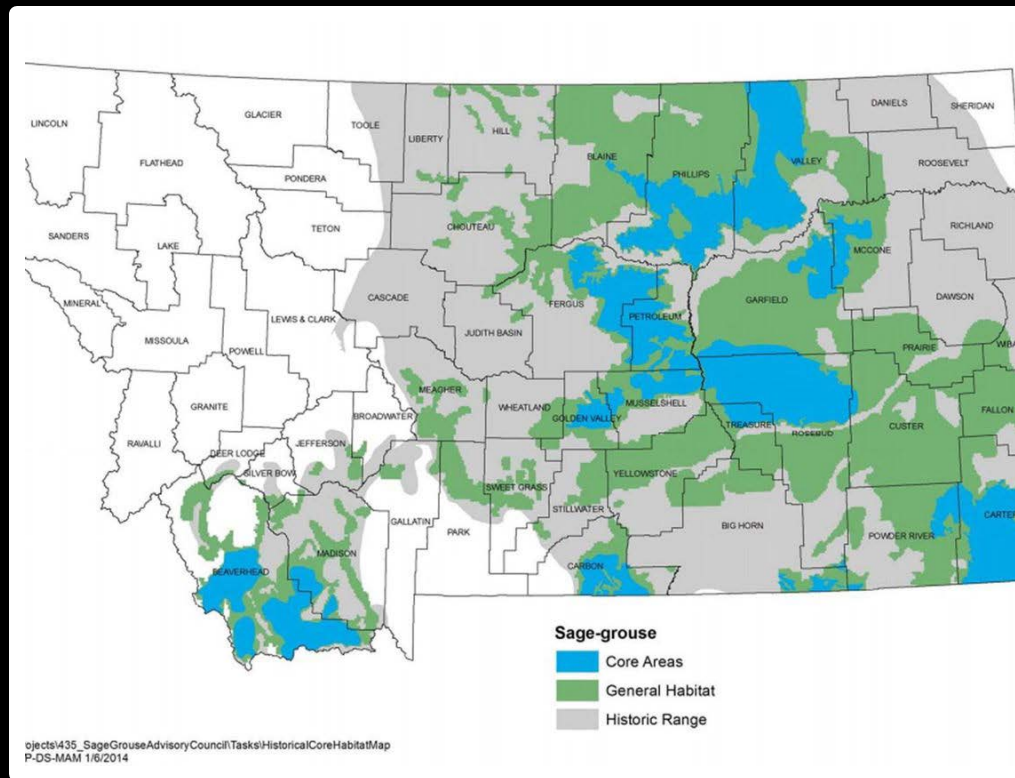
- Mirrors Wyoming
- Establishes State Program
- Establishes Oversight Team (MSGOT)
- Designates key habitat areas
  - “core areas” strategy
- Consultation
  - permitted activities
  - grant programs
  - technical assistance
  - guide activities in designated habitats to achieve goal
    - consult, not regulate
    - mitigate: avoid, minimize, reclaim, replace or compensate



Photo: Joel Maes



# Core Areas Strategy: Focus on Designated Habitats



## Montana Executive Order

- Core Areas
- General Habitats

## BLM and USFS

- habitat designations per plans / amendments



Executive  
Order

Mitigation  
Market  
Place

**Maintain viable sage  
grouse populations and  
conserve habitat**

**Maintain flexibility to  
manage our own lands,  
our wildlife, and our  
economy.**

Private Land  
Stewardship

Sage Grouse  
Stewardship  
Act:  
Grant Fund  
Mitigation

# MONTANA'S CONSERVATION STRATEGY

## 2. Greater Sage Grouse Stewardship Act (2015)

### ○ Stewardship Fund Grant Program

- Fund conservation efforts to benefit sage grouse & habitat
- Create conservation credits to sell (market place - offset impacts)
- Oversight Team decides

### ○ Mitigation Framework

- Address impacts of habitat loss, fragmentation
- Avoid, minimize, restore, replace or compensate
- Market Place
  - conservation bank (or)
  - habitat exchange
- Oversight Team approves



Executive  
Order  
12-2015

Mitigation  
Market  
Place

**GOALS:**

**Maintain viable sage  
grouse populations and  
conserve habitat**

**Maintain flexibility to  
manage our own lands,  
our wildlife, and our  
economy.**

Private Land  
Stewardship

Sage Grouse  
Stewardship  
Act:  
Grant Fund  
Mitigation





# Consultation Process



# Executive Order Consultation



Photo: Richard Producers

- **Does the EO apply?**
  - Where is the project?
    - Activity within EO Habitat
  - Does it require a state permit, involve a state grant, require technical assistance or a state authorization?
- **Is the activity exempted?**
  - Executive Order 12-2015, Att. F
    - e.g. certain agricultural activities (see list)
  - MSGOT
    - All activities within incorporated municipal boundaries
    - Certain DEQ permits
    - Certain DLI permits and licenses



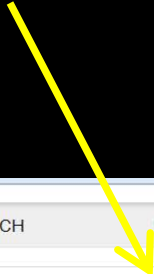


Current Web Site




# https://sagegrouse.mt.gov

Executive Order:  
Projects Review




**MONTANA.GOV**  
OFFICIAL STATE WEBSITE

  
Montana Sage Grouse  
Habitat Conservation Program

**SAGE GROUSE LINKS**

Governor's Executive Order 12-2015 SGHCP

Sage-grouse Core Areas and General Habitat Map



Sage Grouse Habitat Conservation Program Quick Facts

Sage Grouse Habitat Conservation Strategy Quick Facts


Press release: Sage grouse listing not warranted

SERVICES AGENCIES LOGIN

SEARCH

Home Team Grants FAQ **Projects**

## Montana Sage Grouse Habitat Conservation Program



This site may be temporarily unavailable from 6pm to 8pm, February 19 for routine maintenance.

The Montana Sage Grouse Habitat Conservation Program sets forth Montana's Conservation Strategy for the conservation, regulatory protection, and management of sage grouse. The Conservation Strategy is based on the collaborative work of the Montana Greater Sage Grouse Habitat Conservation Advisory Council, Executive Order 10-2014, the Montana Sage Grouse Stewardship Act passed during the 2015 Legislative Session, and Executive Order 12-2015.

### MONTANA SAGE GROUSE OVERSIGHT TEAM

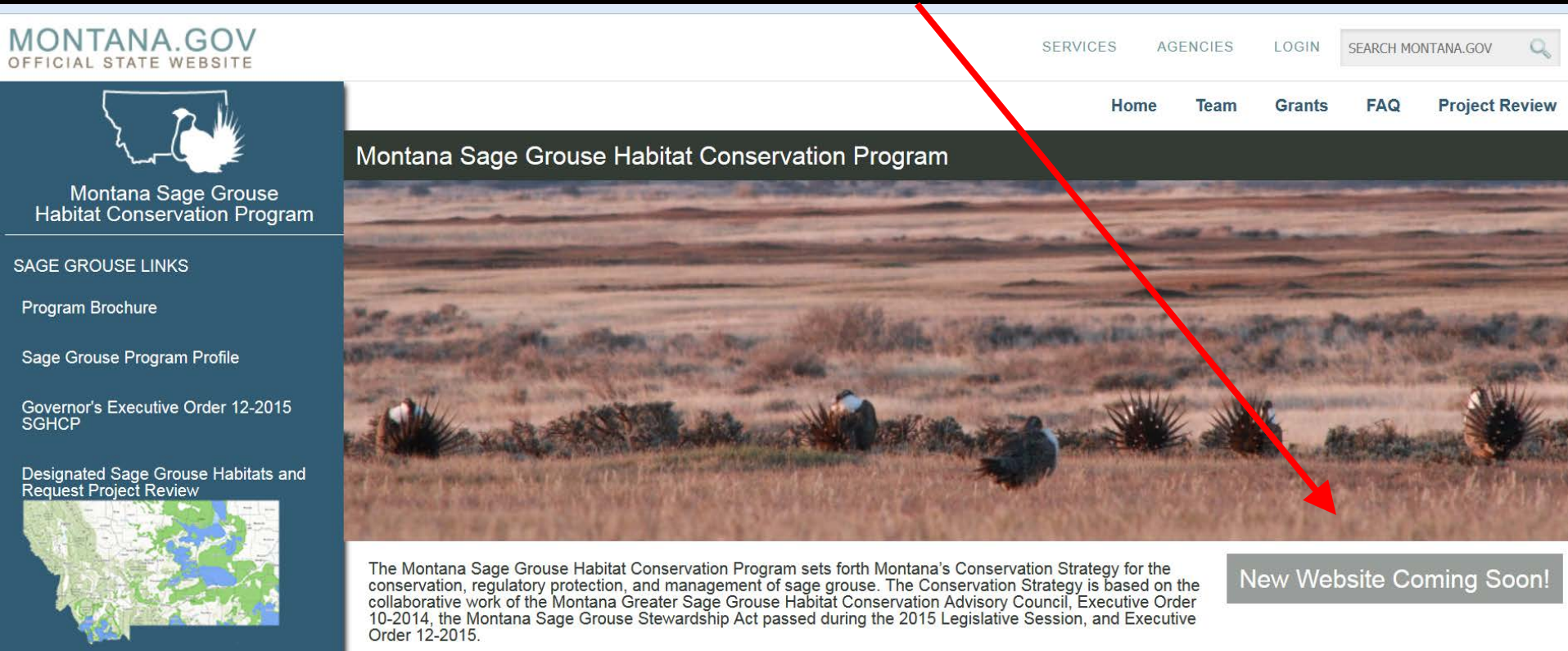
The Montana Sage Grouse Oversight Team (MSGOT) was created by Executive Order 10-2014 and further defined by the 2015 Legislature through Senate Bill 261 the Montana Greater








# New Website Coming April 7<sup>th</sup>!



<https://sagegrouse.mt.gov>

# ePass Account for Secure Log In Need to Create a New Account

 Home » Welcome to ePass Montana

ePass Montana is a convenient and secure way to access Montana government services.

[Instructions](#)[How Do I](#)[Feedback](#)

ePass Montana Login

Hide

Login with ePass Montana

Login with your ePass Montana account. If you do not have an account, you can create one here.

Login

State Employee Login

Hide

Login with State Employee Account

Login with the username and password you use for the state network.

Login

# (Still in Development)

Some Greater Sage Grouse migrate to winter habitat, but most live their lives within relatively short distances of where they hatched.

Photo Credit: Joel Maes



## PROGRAM INFORMATION

[Resources](#)

[Join the Mailing List](#)

[Learn More](#)



## MONTANA SAGE GROUSE OVERSIGHT TEAM

[Members](#)

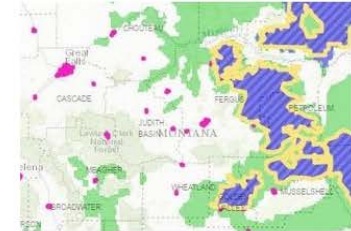
[Meeting Archive](#)



## GRANTS

[Grant Information](#)

[2016 Grants](#)



## PROJECTS

[Start or Follow up on a Project](#)

[Check if you are in habitat](#)

## MONTANA SAGE GROUSE HABITAT CONSERVATION PROGRAM

The Montana Sage Grouse habitat Conservation Program works to sustain viable sage grouse populations and conserve habitat. Montana's Sage Grouse Conservation Strategy is based on the collaborative work of diverse Stakeholders. The Montana Sage Grouse Oversight Team and the Program implement Executive Order 12-2015 and the Greater Sage Grouse Stewardship Act in partnership with, landowners, state and federal agencies, and many private diverse stakeholders so that Montanans maintain control of their lands, wildlife and economy.

- Login, upper right corner
- Projects, map on right



# After Log In: Read Instructions, Work Through Steps 1-6



Photo Credit: Richard Proddgers

## Propose a project in sage grouse habitat

### 1. Instructions

### 2. Basics

### 3. Disturbances

### 4. Questionnaire

### 5. Attachments

### 6. Review & Submit

## Instructions

This project proposal has a few parts:

### Basics Information about Your Project

This wizard lets you submit project information for any permitted activities proposed in sage grouse habitats designated as core (blue), general (green), or connectivity (light-blue) habitats. If you're not sure which habitat zone(s) your project is in, this wizard will help you determine that. For program details please see our [FAQ](#).

### Disturbances: Project Construction and Type of Disturbance

After entering the Basics, you need to draw or upload your project's location and proposed disturbances on a map, and then enter some additional information for each disturbance. Note that a project can have one or more disturbances; for example, you may be proposing a communications project that involves a road, buried cables, and towers, in which case you would have three disturbances.

### Questionnaire: Project and Disturbance Description Details

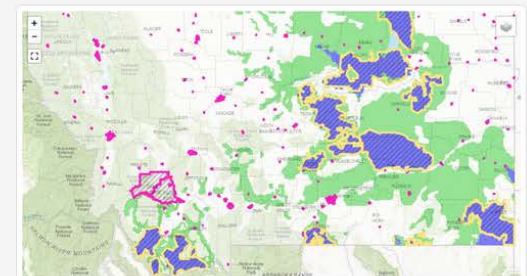
Once your proposed disturbances are mapped and described, you will need to answer some questions based on your disturbance types.

### Save Your Project for Later, Save and Continue, or Submit for Review

You'll have a chance to review a summary of your proposed project before you submit it for consultation. You do not need to complete this wizard in one session – your work will be saved and the next time you log in, you'll be able to resume where you left off.

### Help

If you run into any snags or have questions, please [contact us](#).



Make sure your project is in sage grouse habitat



# Step 2 Basics:

- enter information
- save OR save & continue



Photo Credit: Richard Prodgers

## Propose a project in sage grouse habitat

1. Instructions

2. Basics

3. Disturbances

4. Questionnaire

5. Attachments

6. Review & Submit

### Basics


Name:

Project Type:

Description:

Describe your complete project, not just portions of the project on federal or state land. Be sure to include all associated and foreseeable future development. If the project involves a septic or subdivision permit, include information about any plan to install a septic system, construct a building or other surface disturbing activity in the future associated with the permit.

# Step 3 Disturbances: draw or upload spatial data

 **Project Kevin**

TEAMGRANTSFAQPROGRAM MAPHELLO CAROLYNMANAGE ▾PROJECTSDISTURBANCESNEW PROJECTLOGOUT

2. Basics

3. Disturbances

4. Questionnaire

5. Attachments

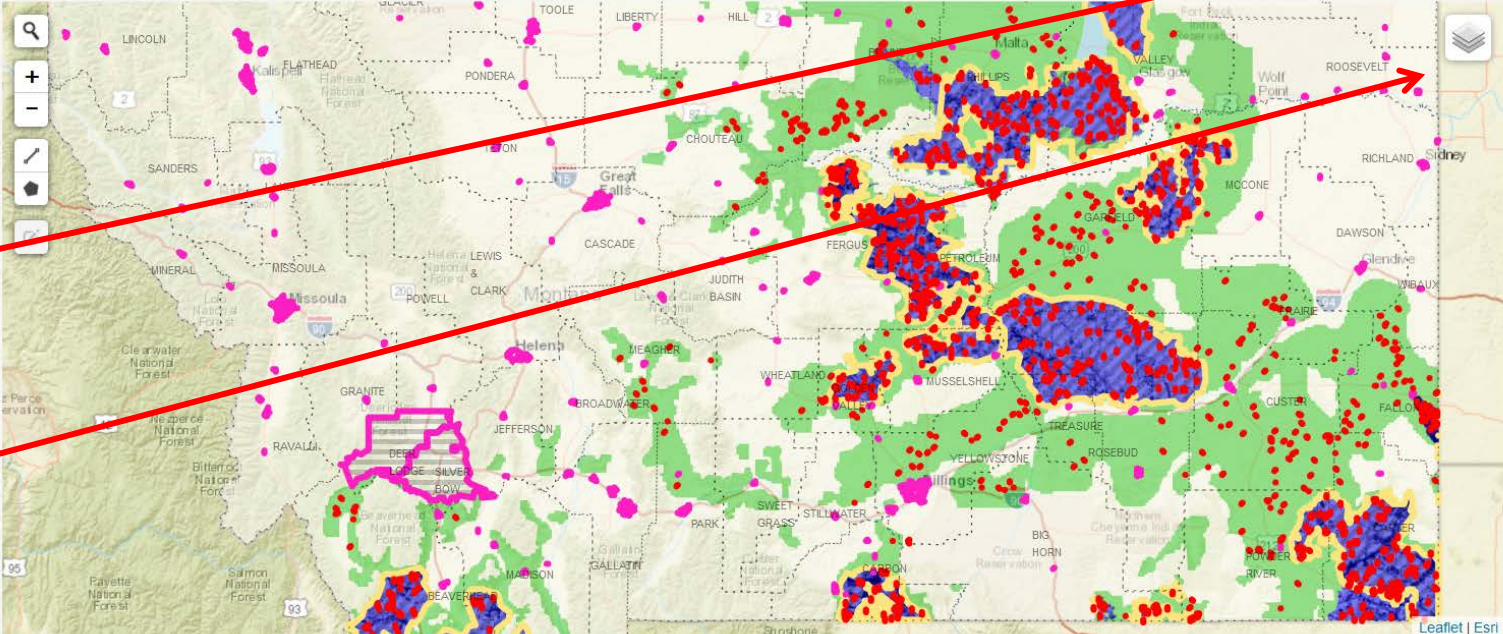
6. Review & Submit

If your project's disturbances are already mapped in GIS, you may upload a File Geodatabase (GDB). Otherwise, you can create a drawing of your project's disturbances here:

- Zoom to your project area by holding down the Shift key and dragging a rectangle.
- Use the line tool for disturbances such as roads, pipelines, fences, trenches, power lines, etc.
- Use the polygon tool for disturbances such as buildings, crops, mines, pits, towers, wells, etc.
- Give each disturbance a name and description in the table below.

Spatial data should include all proposed surface disturbance and activity associated with the project regardless of surface ownership (private, state and/or federal land).

Upload GIS File



Use Tools Here

Upload GIS File Here

Toggle Map Layers Here

# In Development: preliminary results, maps



Disturbance Name	Feature	Type	Width (ft)	Length (ft)	Area (acres)	EO Habitat Classes	Counties	TRS	Ownership	Notes
------------------	---------	------	------------	-------------	--------------	--------------------	----------	-----	-----------	-------

## Preliminary DDCT Results

[Refresh DDCT Preview](#)

The preliminary DDCT Result has not yet been calculated for this project.

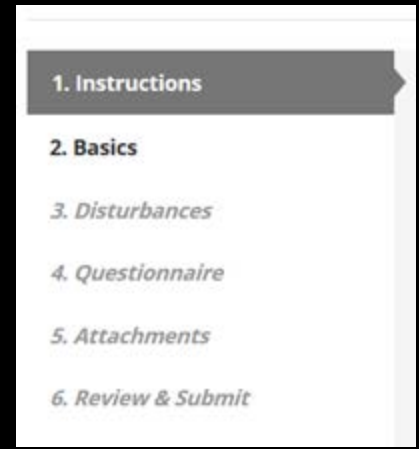
[Save](#) [Save & Continue](#)

Note map features: preliminary disturbance, lek NSO, habitat classifications



# Steps 4-6

- Step 4: Questionnaire
  - answer questions about the project
- Step 5: Attachments
  - Upload documents
  - [spatial data is uploaded in Step 3 Disturbances]
- Step 6: Review & Submit
  - can save and come back later or submit
  - Preliminary results available online (letter later)



# Proponent Receives Confirmation Email

## SAGE GROUSE PROJECT DISTURBANCE CONFIRMATION NUMBER

Thank you for submitting your proposed project. Your project has been sent to the Sage Grouse Habitat Conservation Team for review.

Your Confirmation number:

**1459946796714**

If you have have any questions please contact:

**Montana Sage Grouse Habitat Conservation Program**

1625 Eleventh Ave. Helena, MT 59601

Email: [sagegrouse@mt.gov](mailto:sagegrouse@mt.gov)

Phone: 406-444-0554

Fax: 406-444-6721



# Sage Grouse Program's Consistency Review

- **Review Project Proposal**
  - Does the Executive Order apply?
  - Activity?
  - New surface disturbance or activity?
  - Where?
  - When would it occur?
- **If General or Connectivity Habitat**
  - Executive Order
  - General Guidelines
    - Industry Specific Stipulations
- **If Core Habitat**
  - Executive Order
  - General Guidelines
    - Industry Specific Stipulations
  - Density Disturbance Calculation Tool
- **Is mitigation required?**

## **Coordinate with other Agencies:**

- **BLM**
- **USFS**
- **DNRC State Trust Lands**
- **NRCS**
- **MT Board of Oil & Gas**
- **State agencies**





- **Interagency pre-meetings helpful**
  - exchange information
  - identify issues, concerns early
  - multiple resources involved
  - “one-stop shop”
- **Provide complete information**
  - development footprint
  - other cooperating entities
- **Allow sufficient time, but don’t speculate**

# Consultation Tips and Hints



Photo: Richard Proddgers



# MONTANA'S GUIDING PRINCIPLES

---

- “All Hands, All Lands, All Threats”
  - work collaboratively across all lands
  - develop where least impacts
- Keep working landscapes working
- Respect private property rights, valid rights, existing uses
- Be proactive
  - base decisions and policies in science

***SHARED GOAL: NO NEED TO LIST IN THE FUTURE***



# Questions?



Photo: Joel Maes