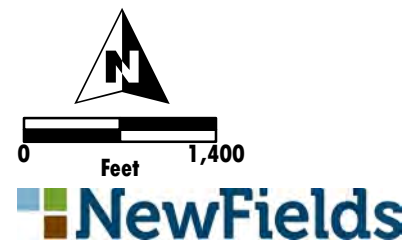


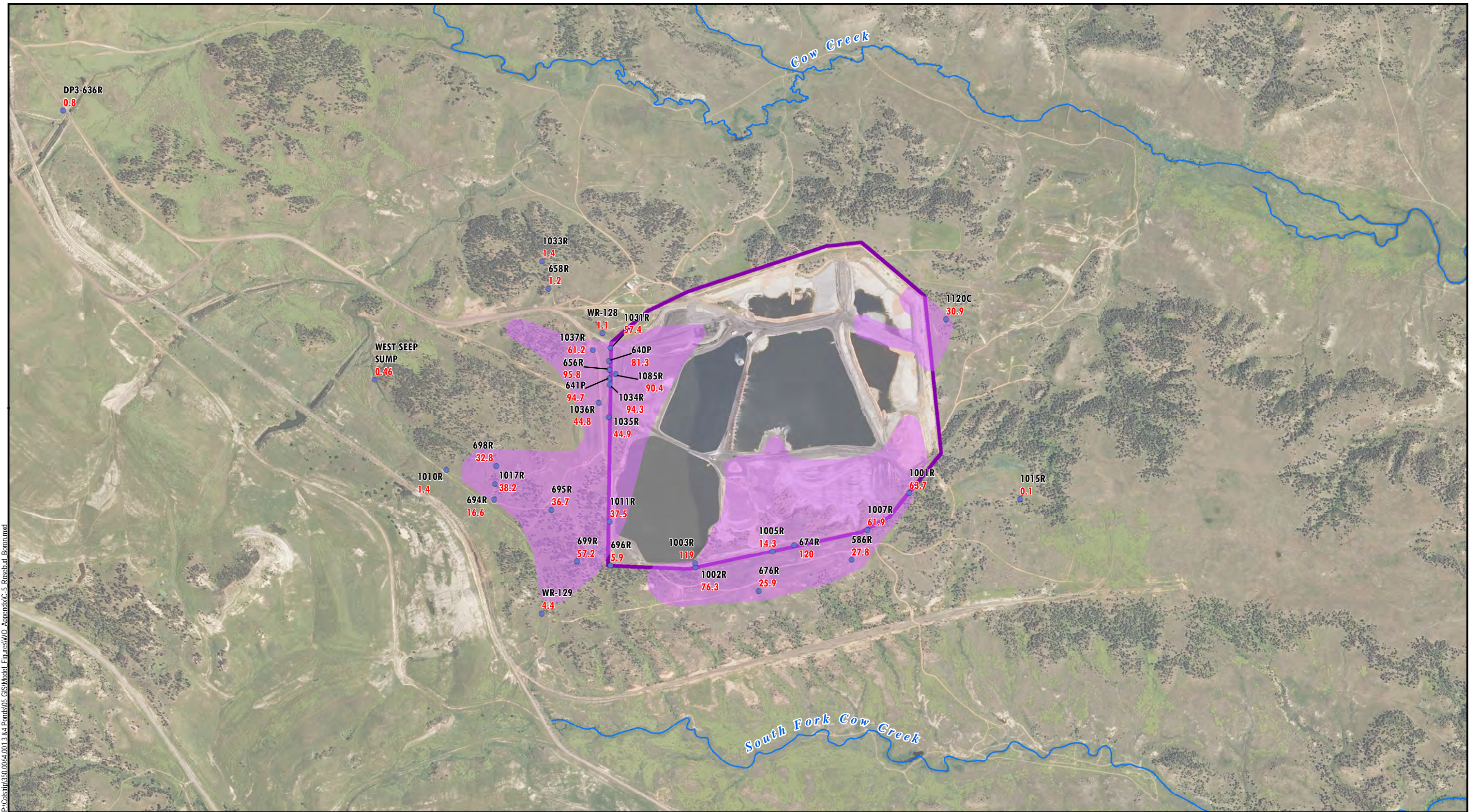
SOURCE: NRIS, Aerial Photo 2011, analytical data 2012



NOTE:
Data used for plumes are in Appendix C, Table C-1

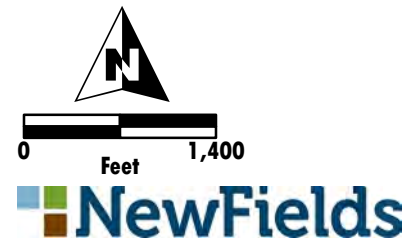
- 574D - Monitoring Well
- 2.1 - Boron Concentration (mg/L)
- Exceeds statistical baseline value of 2.0 (mg/L) (Exponent 2011)

Boron Concentrations in Alluvial Groundwater
Units 3 and 4 EHP Area
Numerical Groundwater Model
CSES-Colstrip, Montana
FIGURE C-1



P:\Colstrip350.00\4.001.3.4.4.Ponds\05 GISModel_Figures\WC_AppendixC-5_Rosebud_Boron.mxd

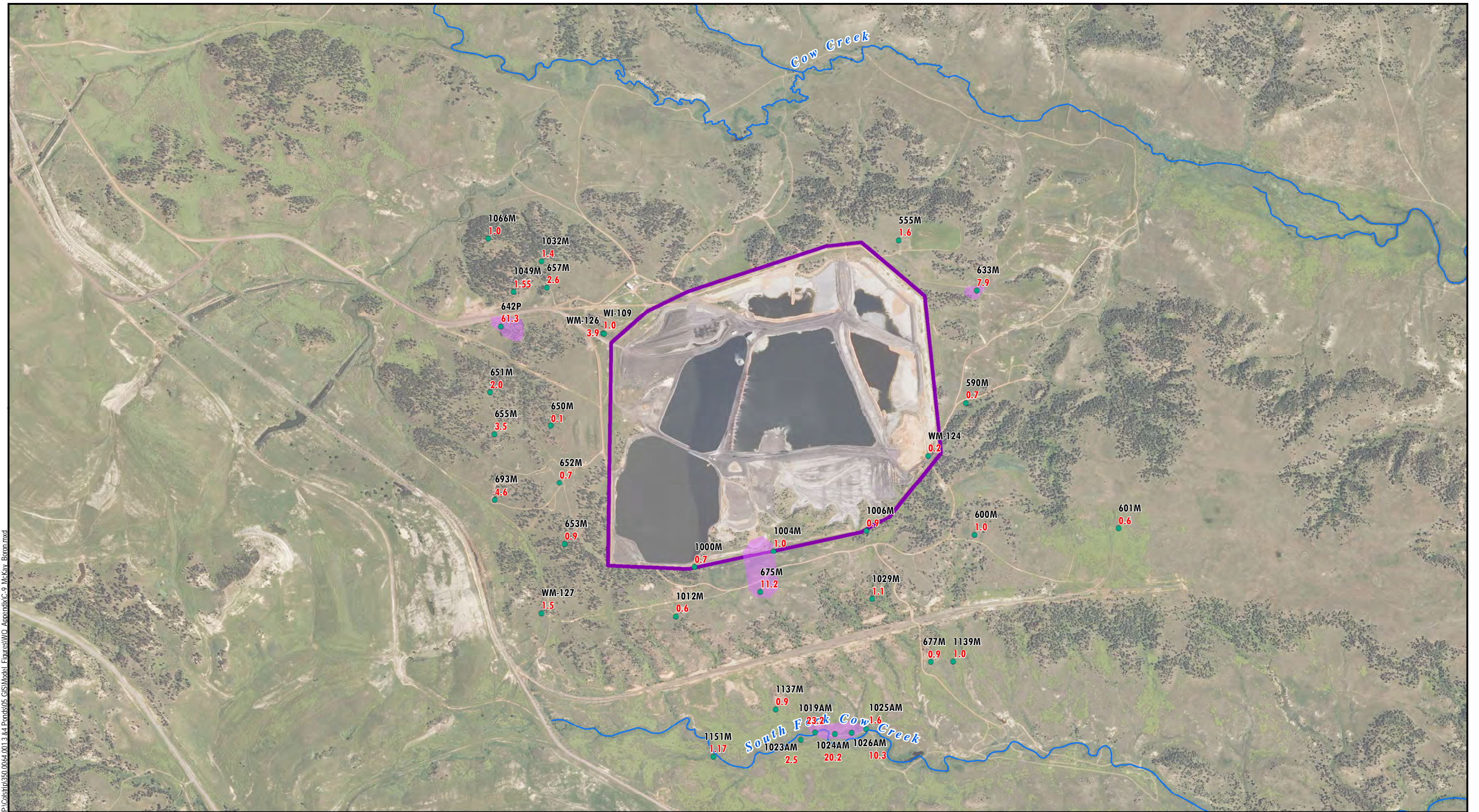
SOURCE: NRIS, Aerial Photo 2011, analytical data 2012



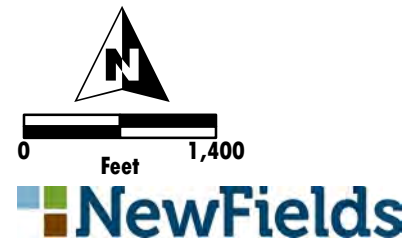
NOTE:
Data used for plumes are in Appendix C, Table C-1

- 574D - Monitoring Well
- 2.1 - Boron Concentration (mg/L)
- Exceeds statistical baseline value of 10.6 (mg/L) (Exponent 2011)
- Slurry Wall

Boron Concentrations in Rosebud/Clinker Groundwater
Units 3 and 4 EHP Area
Numerical Groundwater Model
CSES-Colstrip, Montana
FIGURE C-5



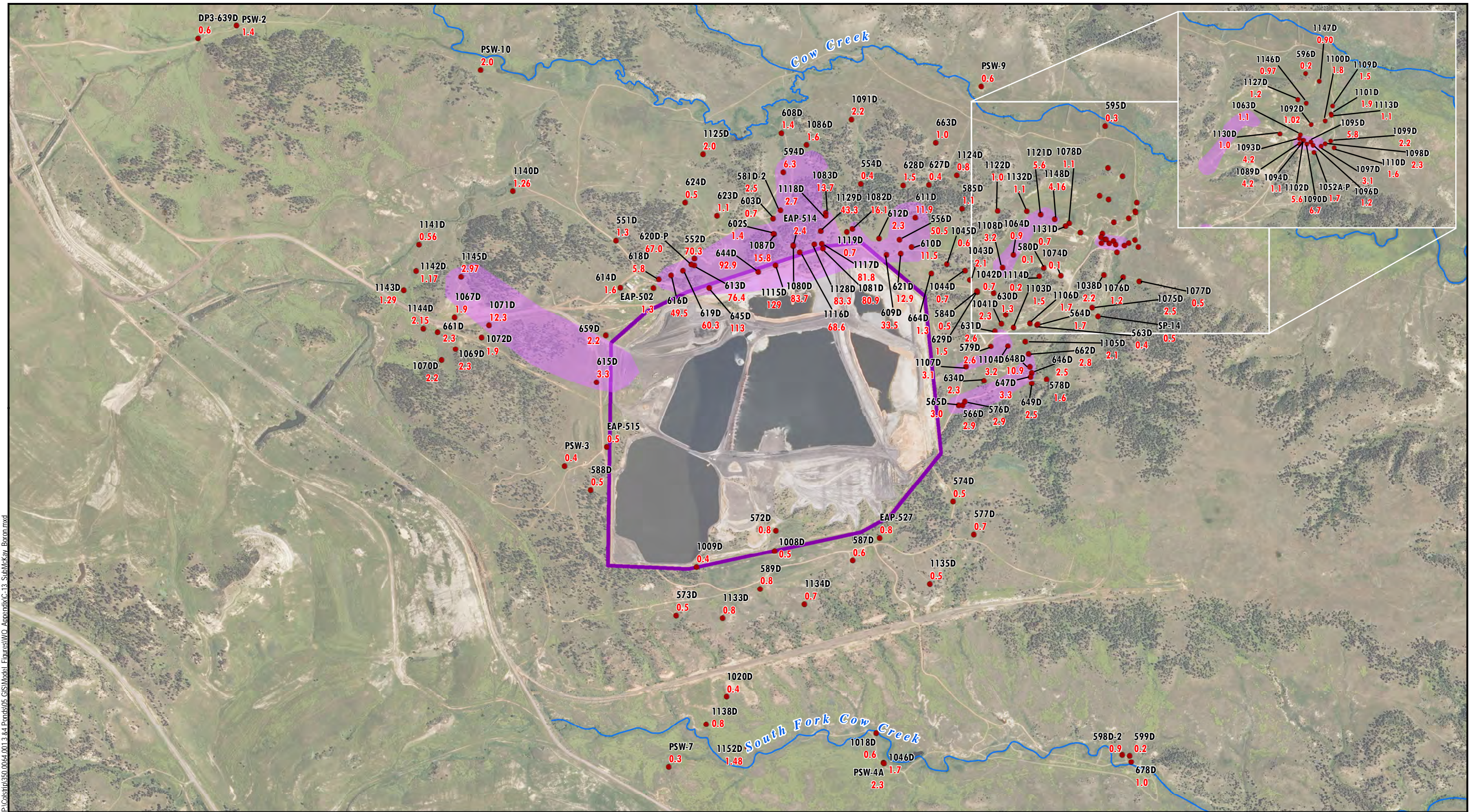
SOURCE: NRIS, Aerial Photo 2011, analytical data 2012



NOTE:
Data used for plumes are in Appendix C, Table C-1

- 574D - Monitoring Well
- 2.1 - Boron Concentration (mg/L)
- Exceeds statistical baseline value of 10.6 (mg/L) (Exponent 2011)
- Slurry Wall

Boron Concentrations in McKay Groundwater
Units 3 and 4 EHP Area
Numerical Groundwater Model
CSES-Colstrip, Montana
FIGURE C-9



P:\Colstrip350.00\4.001.3.4.4.Poncs\05 GISModel_Figures\WO_AppendixC-13_SubMckay_Boron.mxd

SOURCE: NRIS, Aerial Photo 2011, analytical data 2012



NOTE:
Data used for plumes are in Appendix C, Table C-1

- 574D - Monitoring Well
- 2.1 - Boron Concentration (mg/L)
- Exceeds statistical baseline value of 2.6 (mg/L) (Exponent 2011)
- Slurry Wall

Boron Concentrations in Sub-Mckay Groundwater Units 3 and 4 EHP Area
Numerical Groundwater Model
CSES-Colstrip, Montana
FIGURE C-13