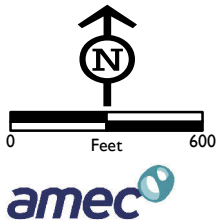




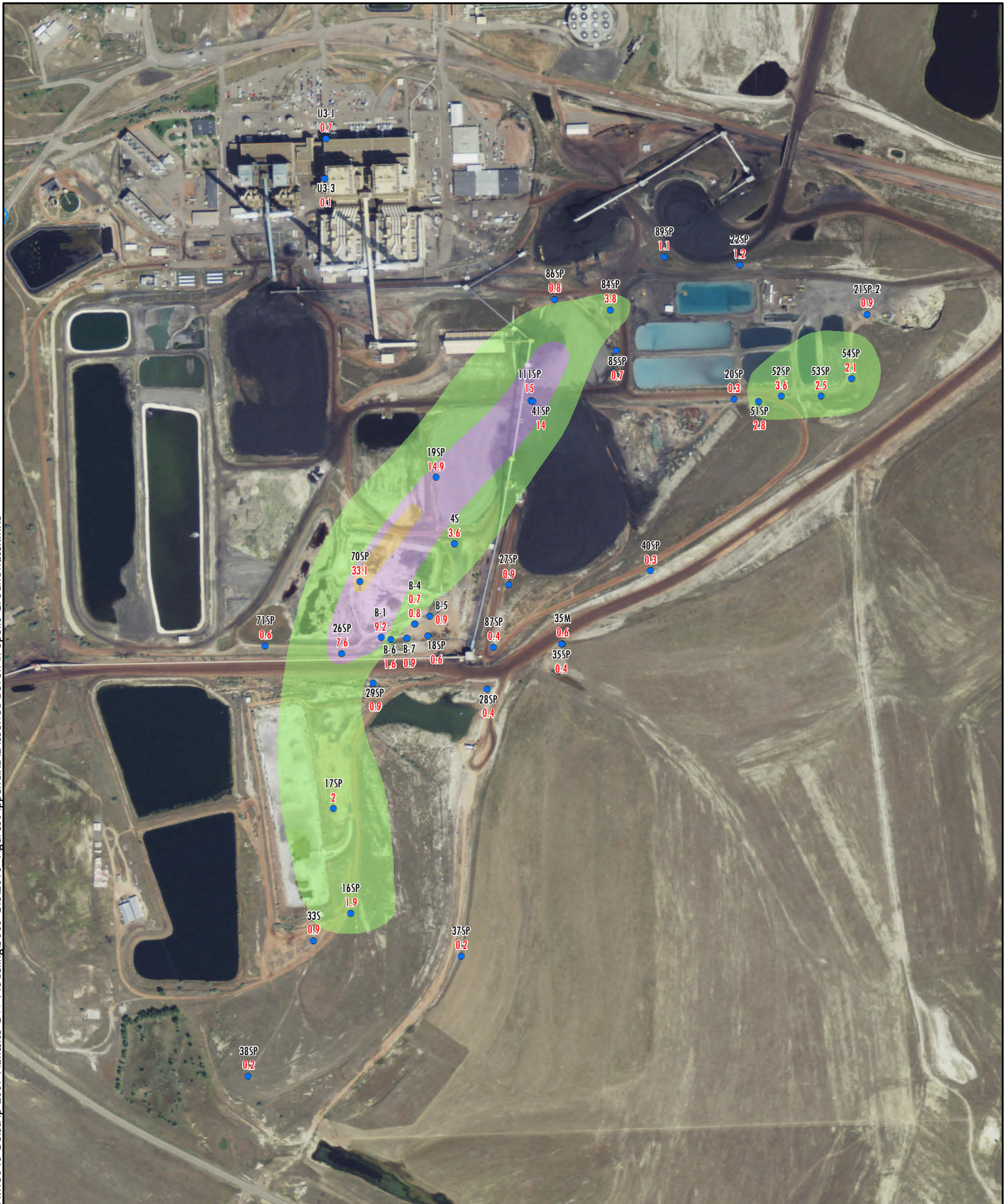
Source: NRIS Imagery, 2009

Winter, Spring 2011 Data



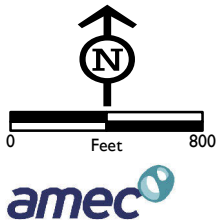
- Dissolved Boron Concentration (mg/L)**
- Monitoring Well
 - 1.5 Baseline Screening Level (mg/L)
 - 3.3 Boron Concentration (mg/L)
 - > 1.5 to 5.0
 - > 5.0 to 20
 - > 20

Dissolved Boron in Alluvial Groundwater Plant Site Area CSES-Colstrip, Montana
FIGURE B-1



Source: NRIS Imagery, 2009

Winter, Spring 2011 Data



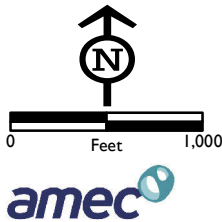
- | | | | |
|-----|---------------------------------|--|--------------------------------------|
| ● | Monitoring Well | | Dissolved Boron Concentration (mg/L) |
| 1.5 | Baseline Screening Level (mg/L) | | > 1.5 to 5.0 |
| 3.3 | Boron Concentration (mg/L) | | > 5.0 to 20 |
| | | | > 20 |

Dissolved Boron in Spoils Groundwater Plant Site Area CSES-Colstrip, Montana
FIGURE B-5



Source: NRIS Imagery, 2009

Winter, Spring 2011 Data



- | Dissolved Boron Concentration (mg/L) | |
|--------------------------------------|--|
| ● Monitoring Well | > 1.2 to 5.0 |
| 1.2 Baseline Screening Level (mg/L) | > 5.0 to 20 |
| 3.3 Boron Concentration (mg/L) | > 20 |

**Dissolved Boron in
Bedrock Groundwater
Plant Site Area
CSES-Colstrip, Montana
FIGURE B-9**