



NOTICE OF PUBLICATION OF CATEGORICAL EXCLUSION
LINCOLN/LEWIS AND CLARK COUNTY SEWER DISTRICT
LINCOLN, MONTANA

WPCSRF PROJECT#: C302247

LINCOLN LIFT STATION IMPROVEMENTS
September 20, 2018

The Montana Department of Environmental Quality has reviewed the above named project. The proposed project will replace the existing submersible pumps, piping, valves, rails, lifts, electrical equipment, and controls within the interior of two existing lifts stations. The new pumps will provide between 10 to 20 percent more pumping capacity to account for the expected growth over the 20-year planning period. The existing concrete wet wells and valve vaults will also be cleaned, repaired and resealed. The new equipment will provide reliable, dependable equipment for the District.

Pursuant to ARM 17.40.318, the Montana Department of Environmental Quality has concluded that the proposed project meets the Categorical Exclusion criteria of the National Environmental Policy Act (NEPA) and the Montana Environmental Policy Act (MEPA). The Categorical Exclusion may be revoked if the project is not initiated within the time period specified in the Preliminary Engineering Report, a new or modified application is submitted, or new evidence demonstrates serious local or environmental issues exist, or state, local, tribal, or federal laws are violated.

The documentation for the Categorical Exclusion is available for public review at the following locations:

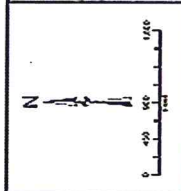
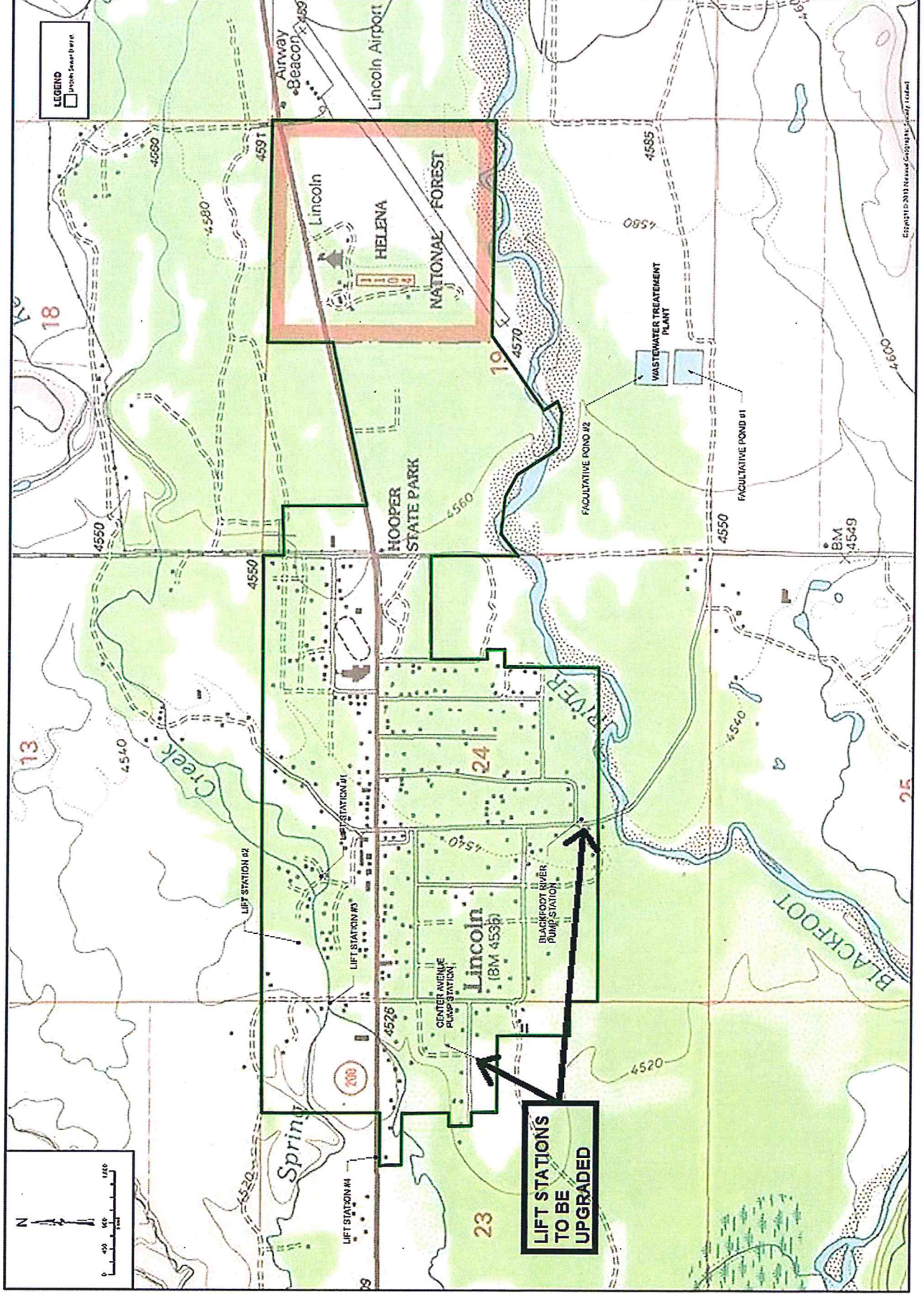
Department of Environmental Quality
State Revolving Fund Loan Program
1520 East Sixth Avenue
Helena, MT 59601

Lyndon Conroy, President
Lincoln/Lewis and Clark
County Sewer District
24 Gehring Ranch Road
Lincoln, MT 59802
Phone (406) 362-4699

Sincerely,

A handwritten signature in blue ink, appearing to read "Paul LaVigne", is written over a horizontal line.

Paul LaVigne, WPCSRF Program Manager
Engineering Bureau
Water Quality Division
Montana Department of Environmental Quality



LEGEND
 Lincoln Sewer District

REV	DATE	REVISION

TD&H Engineering
 1500 N. 10th Street, Helena, MT 59601
 (406) 261-1111
 www.tdandh.com

DATE: 11/11/11
 DRAWN BY: [Name]
 CHECKED BY: [Name]
 DATE: 11/11/11
 TITLE: [Title]