

MDEQ Forest Fire Smoke Advisories

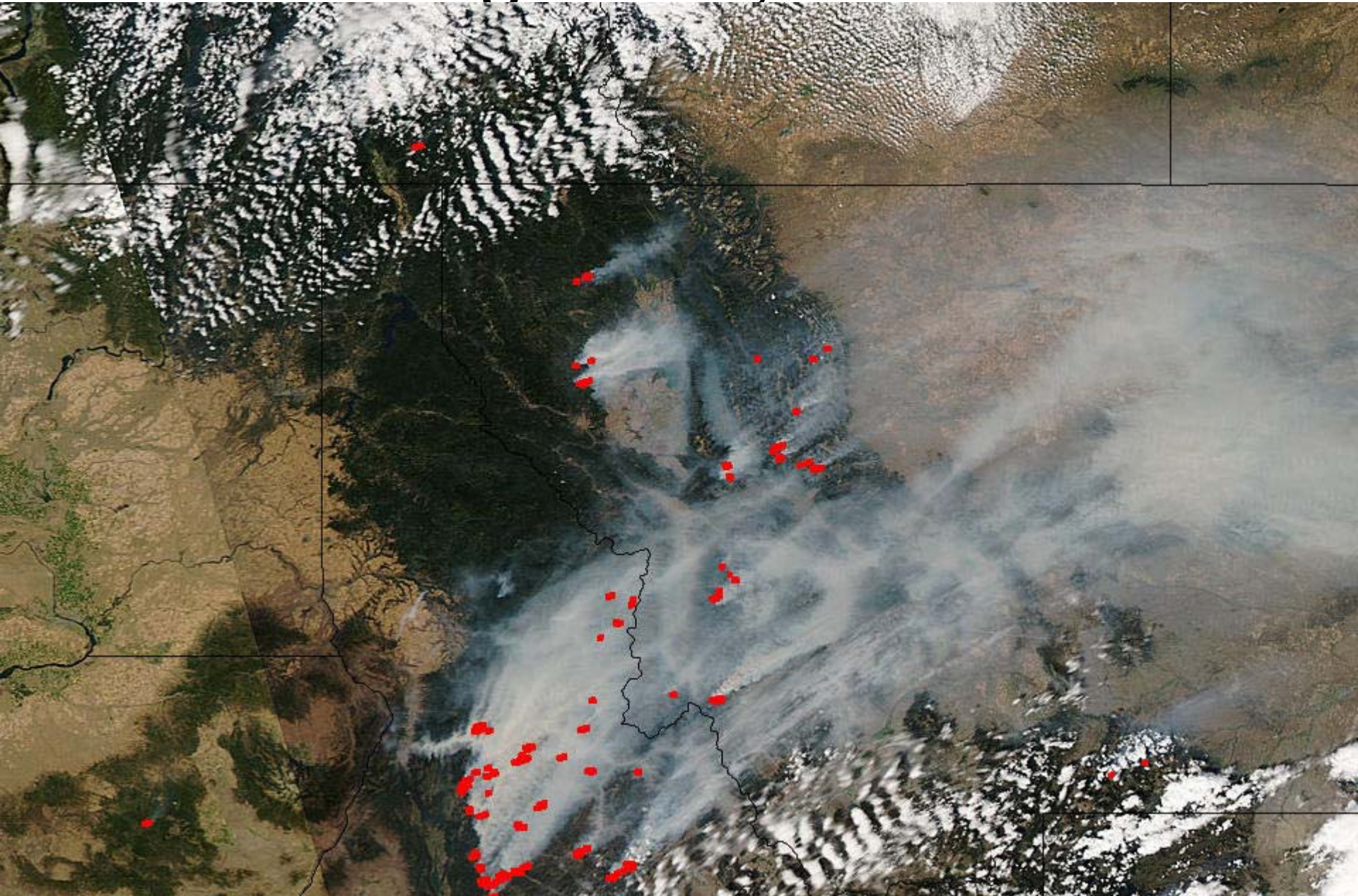
Pre-Season Planning and
Communication

June 22, 2009

Agenda

- Welcome and introductions
Eric Merchant MDEQ Policy and Planning
- MDEQ Forest Fire Smoke Advisories
John Coefield MDEQ Meteorologist
- Questions, Comments and Discussion

August 12, 2007



Respiratory problems on the rise

By MARTIN J. KIDSTON - IR Staff Writer - 08/09/07



Martin J. Kidston IR photo - Smoky skies make for a brilliant sunrise over the Capitol dome Wednesday.

Heavy smoke from summer wildfires has caused an increase in patients seeking care for respiratory problems at St. Peter's Hospital, while causing sore throats and burning eyes in others.

MDEQ Smoke Advisory History

- Started August 8, 2000 **Tenth year!**
- Equipment has changed, PM10 TEOM to PM2.5 BAM.
- Near “real time” data available on Today’s Air.
- Many more “real time” sites available.
- Web form created to allow more efficient updating of web page.

Daily Smoke Update

- Will start when any community is impacted heavily with forest fire smoke.
- June 26 last year Northern California smoke.
- Will end when smoke clears and may be temporarily suspended when conditions improve.
- September 19 last year.
- Updated by 10 AM daily
- Further updates may be posted as needed.

What will be included in update?

- Current Situation Report
- Smoke condition forecast
- Link to health advisories
- List of affected communities
- Link to Visibility guide
- Satellite Photos and analysis
- Link to Today's Air
- Contact information

Permanent Resources on Web Site

- Links to other smoke resources
- Health Advisory Page
- Visibility guide
- Guide for Public Health Officials
- Health Advisories break points
- Link to Today's Air

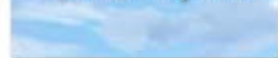
Today's Air

- Near real time pollution data
- Hourly average of previous hours
- Updated hourly by 5-10 minutes after hour
- Map with color code for current health advisory
- Site specific information for listed sites with graph and table of current and past days

Today's Air Improvements 2009

- Missoula and Sidney active now.
- Bozeman site re-located into town.
- Current health category on map is now utilizing all three averaging periods.
- Other improvements may occur.

[Air Quality Info](#)



[Energy Info](#)



[Now Hiring](#)



[Meth Labs Info](#)



[Permits Information](#)



[Recycling](#)



[Report Pollution](#)



[Water Quality Info](#)



Welcome to the Montana Department of Environmental Quality's web site! We invite you to use our site to find environmental information and respond to the many public forums presented in these pages.

What's New at DEQ

- May 14th, [BER meeting cancelled](#)
- Most recent version of the [MUST News](#)
- New [Montana Climate Change](#) Web Site
- **Free!!!** [Recycling for Schools](#)
- [Flood Cleanup Tips](#)
- Westmoreland [Draft EIS for the Absaloka Mine](#)
- [MATL Federal and State Draft EIS](#)
- [Free Asbestos Awareness Seminars - Bozeman](#)
- **Priceless Resources**- [A Strategic Framework for Wetland and Riparian Area Conservation and Restoration](#)
- [List of Biodiesel Retailers in Montana](#)

[DEQ Locations](#) | [DEQ Webcam](#)

Featured Links

[Forest Fire Air Quality Updates](#)



Today's Air
[For Current Conditions](#)

[Forecast Conditions](#)

[Visibility Guidelines](#)

DEQ Webcam





Fire & Smoke Management

DEQ Home

- [Air Monitoring Particulate Data](#)
- [Air Quality Conditions Web Cam](#)
- [Health Effect Categories](#)
- [Breakpoint & Associated Visibility](#)
- [Visibility Ranges](#)
- [State & Federal AQ Standards](#)
- [Open Burning Information](#)
- [Prescribed Burning](#)
- [Other Interesting Fire Links](#)

Today's Air

For Current Conditions

Forest Fire Smoke Report From State Medical Officer

Steven D. Helgerson, MD, MPH
Pertinent information on acute and long-term effects from smoke exposure.

Montana Dept. of Public Health & Human Services News Release on the health impacts of wildfire smoke.

[Wildfire Smoke - A Guide for Public Health Officials](#)

Previous Updates

[2007](#) | [2006](#) | [2005](#)

Open Burning Rules

- 77- 5-103(3)
- 76-13-102(7)
- 76-13-109

These rules (MCA) apply to all activities on all classified forest land within Montana during the legal fire season, included any extension there

Fire & Smoke Management in Montana



Montana DEQ will be issuing daily forest fire smoke updates for the duration of the forest fire emergency. The reports are generally posted before noon. Occasional afternoon updates may be posted if deemed necessary. Residents experiencing smoke impacts should use the [VISIBILITY GUIDELINES](#) to evaluate their situation and guide their actions.

2007 Forest Fire Air Quality Updates Forecast Conditions

- [August 12, 2007](#)
- [August 11, 2007](#)
- [August 10, 2007](#)
- [August 09, 2007](#)
- [August 08, 2007](#)
- [August 07, 2007](#)
- [August 06, 2007](#)
- [August 05, 2007](#)
- [August 04, 2007](#)
- [August 03, 2007](#)
- [August 02, 2007](#)
- [August 01, 2007](#)
- [July 31, 2007](#)
- [July 30, 2007](#)

[July 29th MODIS satellite photos](#)

- [July 29, 2007](#)
- [July 28, 2007](#)
- [July 27, 2007](#)
- [July 26, 2007](#)
- [July 25, 2007](#)
- [July 24, 2007](#)
- [July 23, 2007](#)
- [July 22, 2007](#)
- [July 21, 2007](#)
- [July 20, 2007](#)
- [July 19, 2007](#)

Links to Current Fire Information

- [InciWeb](#) - Incident Information System
- [Montana Fire Conditions](#) - State of Montana agencies provide links to information regarding the impact and current status of fires.
- [National Fire News](#) - This page is updated daily for wildland fires across the nation. Scroll down for the latest Montana information.
- [The NRIS Fire Response Data Page](#) - a GIS data layer access page resource to the wildfire response community.
- Health Alerts [Flathead County Health Department Fire](#)
- Air Quality Program - Current Air Quality [Missoula County Health Department](#)
- [Visit Montana.com Current Fire Conditions](#)
- [more...](#)

DEQ smoke page

Questions?

- John Coefield
- 444-5272
- jcoefield@mt.gov